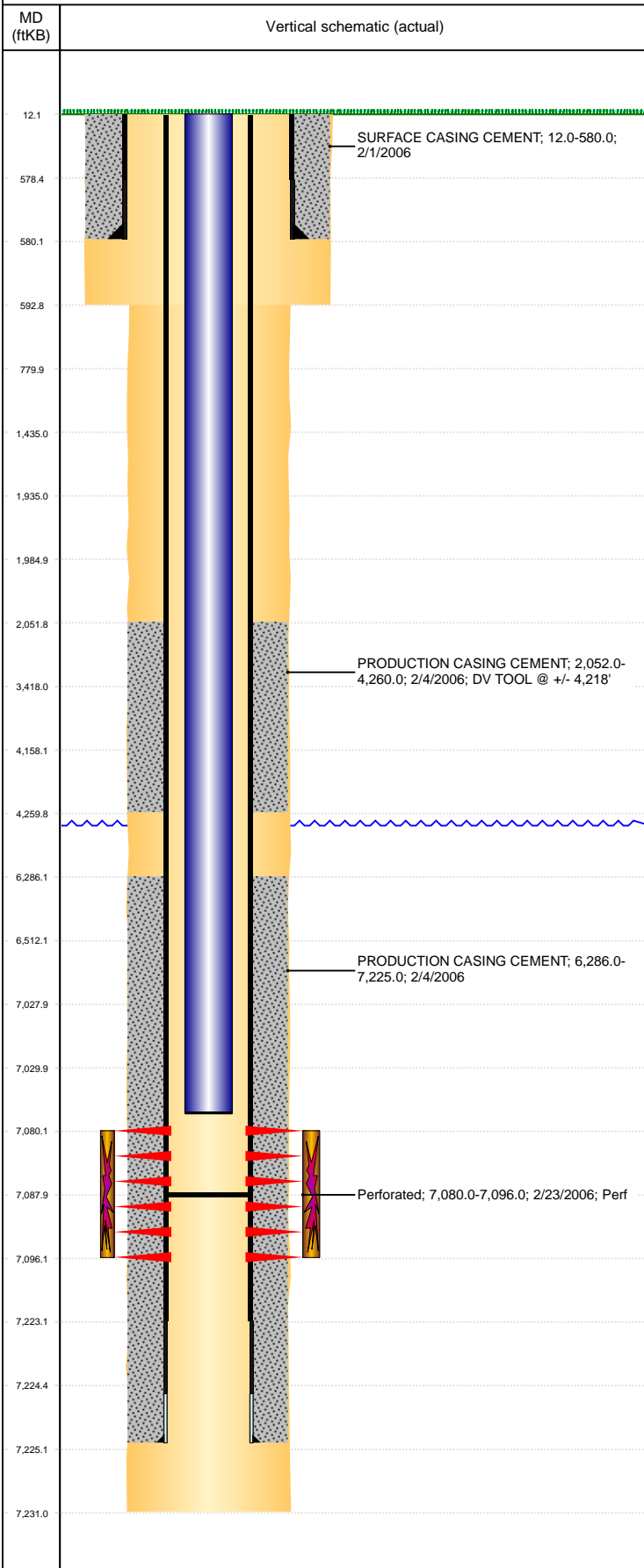


**Well Name: HUNGENBERG E28-12**

VERTICAL, ORIGINAL HOLE, 3/17/2021 5:19:09 PM



Well Header									
API 05-123-23530		Business Unit DJ BASIN			District 15		Well Config VERTICAL		
KB - GL / MSL (ft... 12.00		Spud Date 1/31/2006		P & A Date		Well Production Status TA (AT SURFACE)			SoRT No
Comment DV TOOL @ +/- 4,218'									
Surface Location (Congressional)									
Qtr 3 NW	Qtr 4 SW	Section 28	Twnshp 6	Twنش... N	Range 65	Rng E/... W	Actual Latitude (°) 40.45541216	Actual Longitude (°) -104.67522764	
Wellbore Sections									
Section Des			Size (in)			Act Top, MD (ftKB)		Act Btm, MD (ftKB)	
SURFACE			12 1/4			12		593	
PRODUCTION			7 7/8			593		7,231	
Casing Strings									
Csg Des			Run Date		OD (in)	Wt/Len (lb/ft)	Grade	Top, MD (ftKB)	MD (ftKB)
Surface			2/1/2006		8 5/8	24.00	J-55	12.0	580.0
Production			2/4/2005		4 1/2	11.60	M-80	12.0	7,225.0
Cement									
Des					Start Date		Top (ftKB)		Btm (ftKB)
SURFACE CASING CEMENT					2/1/2006		12.0		580.0
PRODUCTION CASING CEMENT					2/4/2006		2,052.0		4,260.0
PRODUCTION CASING CEMENT					2/4/2006		6,286.0		7,225.0
Zone Statuses									
Zone Name		Status Date	Status	Fluid Type	Job			Prod Method	
CODELL		3/4/2006	PR		DRILLING/COMPLETION - ORIGINAL, 1/31/2006...				
Perforation Data									
Linked Zone			Bnch/Stg	Entered Shot Total	Top (ftKB)		Btm (ftKB)		Date
CODELL, ORIGINAL HOLE				64	7,080.00		7,096.00		2/23/2006
Stimulation Intervals									
Zone					Start Date		Top (ftKB)		Btm (ftKB)
CODELL, ORIGINAL HOLE					3/2/2006		7,080.0		7,096.0
Other In Hole									
Run Date		Des			Make		OD (in)	Top (ftKB)	Btm (ftKB)
Logs									
Date		Type					Top, MD (ftKB)		Btm, MD (ftKB)
2/4/2006		COMPENSATED DENSITY					1,900.0		7,191.0
2/4/2006		INDUCTION					580.0		7,231.0
2/23/2006		CBL/CCL/GR					1,900.0		7,191.0
10/24/2018		GYRO					12.0		7,000.0
Plug Back Total Depths									
Date		Type			Com				Depth (ftKB)
2/23/2006		FILL			DEPTH LOGGER ON CBL				7,192.0
2/23/2012		FILL			RIH W/ 1.25" WT BAR TO TAG				7,088.0