

Foundation Energy Management LLC, Wakefield 22-30
125-07720

Inspection #688309999

3/16/2021

Routine Inspection

FOUNDATION ENERGY

WAKEFIELD No. 12-30

SW NW SEC. 30-1N-45W

1/4 MILE S OF ROADS

V & 32 & E INTO

YUMA COUNTY, CO

24-HOUR EMERGENCY CALL:
1-866-767-3600

FOUNDATION
ENERGY MANAGEMENT, LLC

WAKEFIELD 22-30

SE NW Sec. 30-T1N-R45W
Rd. V & 32, 1/2 Mi S, East into
Yuma County, CO

24-HOUR EMERGENCY CALL:
1-866-767-3600

Colorado Oil and Gas Conservation Commission

40.02707, -102.454, 3799.2ft, 97°

03/16/2021 01:50:43 PM

FOUNDATION
ENERGY MANAGEMENT, LLC

WAKEFIELD 22-30

SENE Sec.30-T1N-R45W
Rd. V & 32, 1/2 Mi S, East into
Yuma County, CO

24-HOUR EMERGENCY CALL:
1-866-767-3600

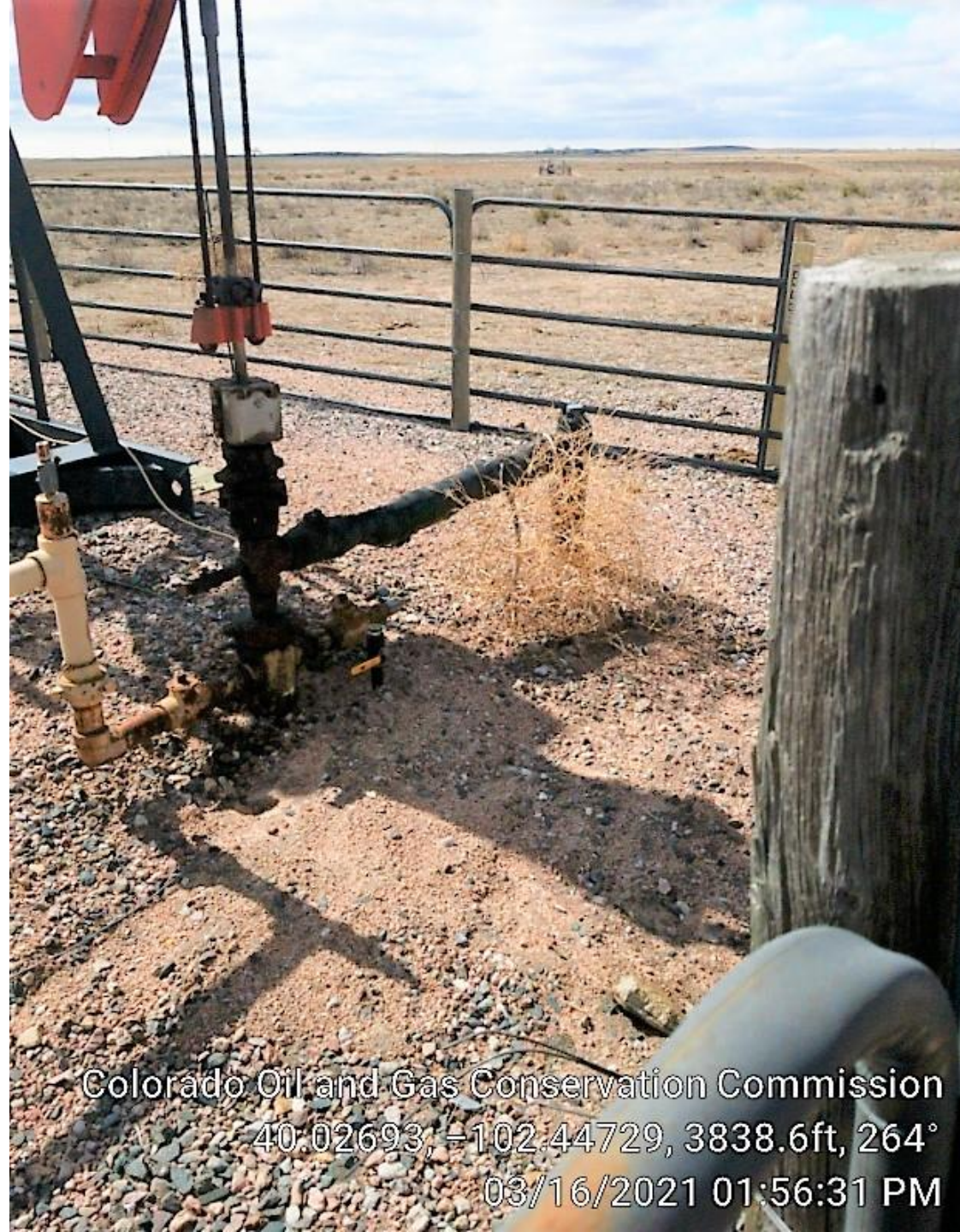
Colorado Oil and Gas Conservation Commission

40.02693, -102.44729, 3835.3ft, 212°

03/16/2021 01:56:26 PM



Colorado Oil and Gas Conservation Commission
40.02693, -102.44728, 3841.9ft, 246°
03/16/2021 01:56:40 PM



Colorado Oil and Gas Conservation Commission
40.02693, -102.44729, 3838.6ft, 264°
03/16/2021 01:56:31 PM



Colorado Oil and Gas Conservation Commission
40.02689, -102.44728, 3841.9ft, 78°
03/16/2021 01:57:14 PM

[illegible]

Colorado Oil and Gas Conservation Commission
40.0269, -102.44728, 3845.1ft, 41°
03/16/2021 01:57:18 PM