

Foundation Energy Management LLC, Wakefield 12-30  
125-09415

Inspection #688309998

3/16/2021

Routine Inspection



**COLORADO**

**Oil & Gas Conservation  
Commission**

Department of Natural Resources

FOUNDATION ENERGY

WAKEFIELD No. 12-30

SW NW SEC. 30-1N-45W

1/4 MILE S OF ROADS

V & 32 & E INTO

YUMA COUNTY, CO

24-HOUR EMERGENCY CALL:  
1-866-767-3600

FOUNDATION  
ENERGY MANAGEMENT, LLC

WAKEFIELD 22-30

SE NW Sec. 30-T1N-R45W  
Rd. V & 32, 1/2 Mi S, East into  
Yuma County, CO

24-HOUR EMERGENCY CALL:  
1-866-767-3600

Colorado Oil and Gas Conservation Commission

40.02707, -102.454, 3799.2ft, 97°

03/16/2021 01:50:43 PM



NO  
SMOKING

FOUNDATION ENERGY  
WAKEFIELD No. 12-30  
SW NW SEC. 30-1N-45W  
1/4 MILE S OF ROADS  
V & 32 & E INTO  
YUMA COUNTY, CO  
IN-HOURLY EMERGENCY CALL  
1-866-767-3600

Colorado Oil and Gas Conservation Commission  
40.0267, -102.44943, 3845.1ft, 227°  
03/16/2021 01:53:22 PM

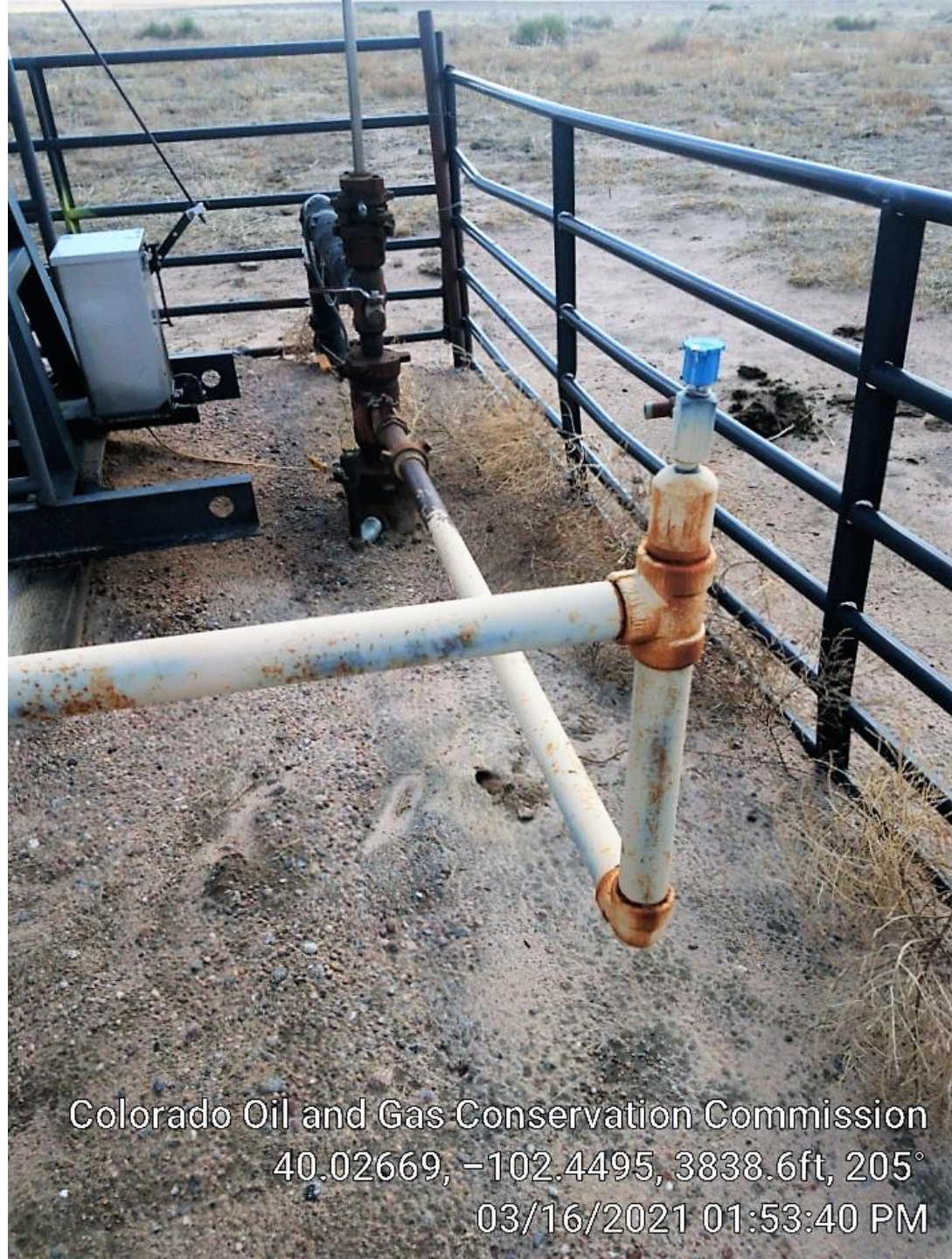


**DANGER**  
THIS EQUIPMENT  
STARTS  
AUTOMATICALLY

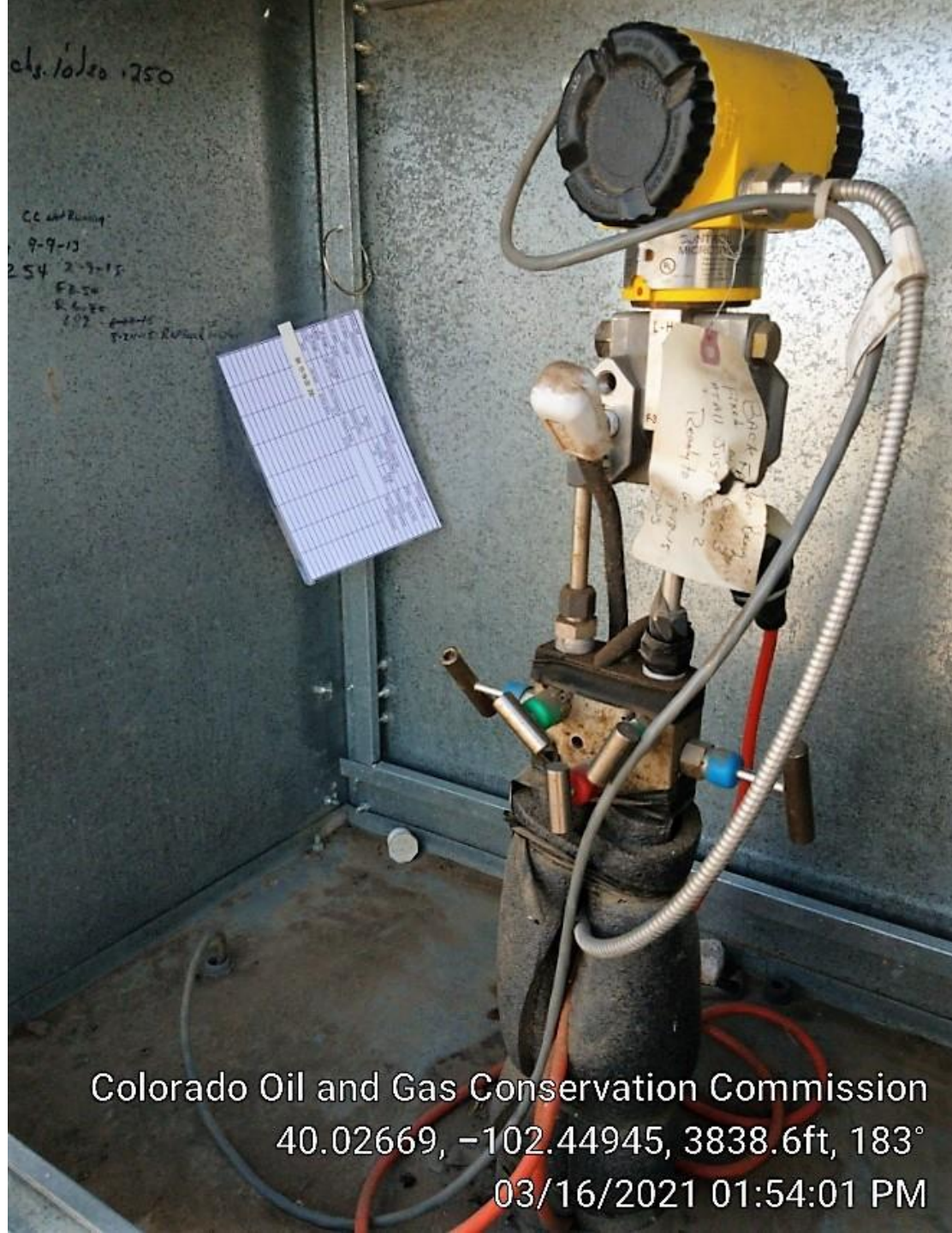
**NO  
SMOKING**

FOUNDATION ENERGY  
MARKETFIELD NO. 10-30  
SW 1/4 SEC. 30-14-47N  
1/4 MILE S OF ROAD  
4 & 20 A R INTO  
YUMA COUNTY, CO  
PHONE: 970-842-1144  
1-800-767-0300

Colorado Oil and Gas Conservation Commission  
40.0267, -102.4494, 3845.1ft, 247°  
03/16/2021 01:53:28 PM



Colorado Oil and Gas Conservation Commission  
40.02669, -102.4495, 3838.6ft, 205°  
03/16/2021 01:53:40 PM



Colorado Oil and Gas Conservation Commission  
40.02669, -102.44945, 3838.6ft, 183°  
03/16/2021 01:54:01 PM