

Cementers Well Information Sheet

Well Name: PHARAOH 2C (Well 3 Of 5)

AFE#: DC003111

API#: 05-123-48833

Surface Casing Set At: 1,668'

Formation: CODELL

Estimated TD: 16825'

Estimated TVD at TD: 6732'

Top Of Lead Cement: 500'

Top Of Tail Cement: 6013'

Production Casing Type: 5 ½" BTC #20

***** Please Note: TD and TVD at TD are based off drilling plan and has the possibility of changing. Any significant changes in depths will be communicated to Cement Company*****



US Treatment Report

Customer: PDC Energy
Rep: Brady Sharp
Supervisor: Travis Tolman
Job Type: US Primary
 Casing-Production

Rig: Ensign 142
Well: PHARAOH 2C
UWI: Pharaoh 2C
Surface:

Job #: JOB00092619
Job Date: Jan 09 @ 00:00
Time Requested: Jan 09 @ 10:30
Time Arrived: Jan 09 @ 10:30
Time Released: Jan 09 @ 19:30

Scavenger

62.82 sk MAG EV 12.9 + 0.30% MCR-3 + 0.20% MCR-1 + 0.70% MCFL-7 + 1.00% MCA-4 + 0.50% MCGC-1 + 0.20% MCDF-P
 Weight: 12.5lb/gal

Yield: 1.7 ft³/sk = 19bbls Mix Water: 8.98 gal/sk = 564.02 gal

857.2 sk MAG EV 12.9 + 0.30% MCR-3 + 0.20% MCR-1 + 0.70% MCFL-7 + 1.00% MCA-4 + 0.50% MCGC-1 + 0.20% MCDF-P

Yield: 1.53 ft³/sk = 233.58bbls Mix Water: 7.72 gal/sk = 6617.43gal

1837.8 sk MAG EV 13.7 + 0.50% MCA-2 + 0.80% MCFL-7 + 0.30% MCFR-2 + 0.35% MCR-H + 0.30% MCI-2 + 0.50% MCFW-1 + 0.50% MCGC-1 + 0.20% MCDF-P

Yield: 1.35ft³/sack = 441.87bbls Mix Water: 6.40gal/sack = 11761.92gal

BHCT (F)	215	BHST (F)	215	Surface Casing Size (in)	9.625
Surface Weight (lb/ft)	36	Production Casing Size (in)	5.5	Production Grade	HCP-110
Production Weight (lb/ft)	20	Collapse Csg Pressure (psi)	6648	Float Depth (ft)	16800
Funnel Vis (sec/qt)	50	Hole Size (in)	8 1/2	Max Csg Pressure (psi)	7584
Max Pressure (psi)	3500	Mud Density (lb/gal)	10.7	Mud Type	OBM
Plug Size (in)	5.5	Plug Type	Rig Supplie	TMD (ft)	16845
TVD (ft)	6746	Unkown UDF	d Product ion	Unkown UDF	Surface

Treatment Info: Sacks Used: 0 Sacks Not Used: 0

Preflush: 5bbls Fresh Water & 38bbls MAG Sweep-H + MAG Clean-1 & 19bbls MAG Sweep Circulation Time: 4
 Displace: 10bbls Sugar Water & 363bbls Fresh Water

Slurry Temp:	64	Bulk Sample:	Yes
Water Temp:	48	Water Sample:	Yes
Bulk Temp:	68	Slurry Sample:	Yes
Air Temp:	31	Air Pressure:	30.3
			4
Slurry Returns:	28	Plug Bumped:	Yes
Cement Class:	Type III	Pump Out Lines:	Yes
		Float Held:	Yes
		Humidity:	92
		Precipitation:	60

Time	Pressure psi	Annular Pressure psi	Volume Per Stage bbls	Total Stage Volume bbls	Rate bbls/mi n	Treatment Detail

10:30	0.00					Arrive on Location - Arrive on location, Pre Rig up JSA, Rig In Equipment, Spoke with Company Rep, Depths,Volumes,Etc
13:00	0.00					Safety Meeting - Held JSA with Crew went to Rig Floor Held JSA with Rig Crew & Company Rep
13:55	0.00					Drop Plug - Drop 1st Bottom Plug
14:02	415.00		5		2	Fill Lines - Fill Pump & Lines With 5 bbls Of Fresh Water
14:05	4,533.00					Start Pressure Test - Pressure Test Pump & Lines 5,000 psi
14:12	793.00		38		5	Pump Preflush - Pump 38 bbls Of MAG Sweep-H + MAG Clean -1 @ 11.5 ppg , Good Returns
14:22	710.00		19		5	Pump Preflush - Pump 19 bbls Of MAG Sweep-H @ 12.0 ppg, Good Returns
14:27	400.00		19		2.5	Pump Scavenger - Pump Scavenger=63.5 sks 1.68 ft3/sk=19 bbls Est Tos =91.68 ft,Good Returns
14:37	0.00					Drop Plug - Drop 2nd Bottom plug
14:40	1,200.00		233		6.5	Pump Slurry - Pump Lead = 857.2 sks 1.53 ft3/sk 7.72 gps=233.4 bbls Est Tol =488.17 ft,Wet & Dry Samples Taken,Good Returns
15:23	785.00		442		6.5	Pump Slurry - Pump Tail=1837.80 sks 1.35 ft3/sk 6.4 gps=441.87 bbls Est Tot = 6002.85 ft,Wet & Dry Samples Taken,Good Returns
16:35	0.00					Stop Pumping - Shut Down Swap Valves
16:37	0.00					Pump Out Treating Lines - Wash Pump & Lines
16:38	0.00					Drop Plug - Drop Top Plug
16:45	3,248.00		130		10.5	Displace - Displacement = 373 bbls 1st 10 bbls With Sugar , 363 bbls With Biocide, Pump Operator Calling Out Every 10 bbls
17:00	3,200.00		120		8	Slow Rate Pumping - Slow Rate Per Company Rep
17:17	2,863.00		100		6	Slow Rate Pumping - Slow Rate Per Company Rep
17:30	2,486.00		23		4	Decrease Rate - Slow Rate to 4 bpm @ 353 bbls
17:36	3,000.00					Bump Plug - Landed Plug Actual Displacement 373 bbls Got Back 28 bbls Of Cement All Spacer
17:40	4,035.00				1	Pressure Up To Shift Tool
17:41	2,485.00		5		4	Displace - Pump Wet Shoe
17:44	0.00					Check Floats - Check Float It Held 3.5 bbls Back
17:55	0.00					Wash Up Truck
18:20	0.00					Rig Out
19:30	0.00					Leave Location



Customer: PDC ENERGY INC

Date: JAN 09 2021

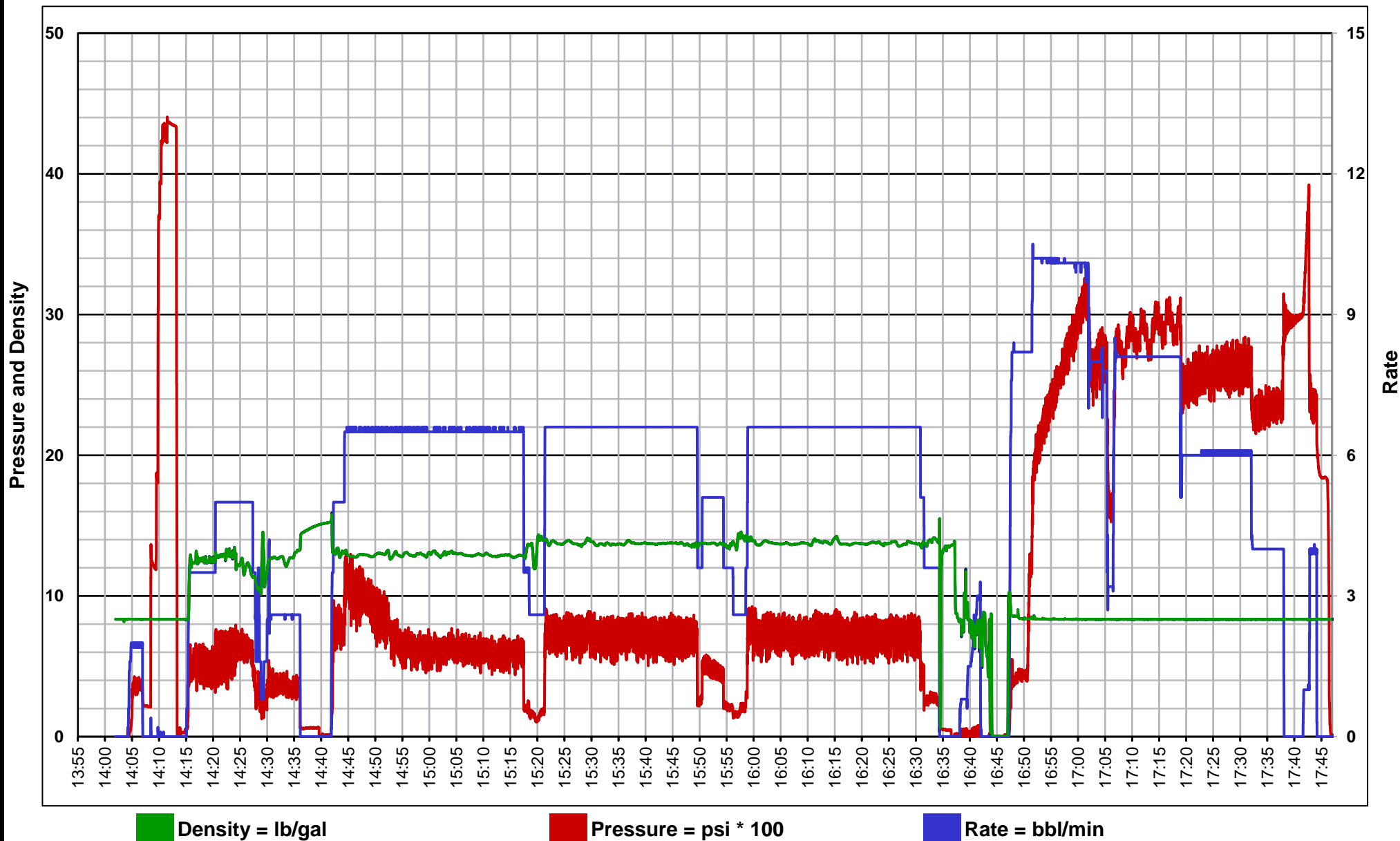
Ticket: 92619

Well Name: PHARAOH 2C

Location: WELD CO

Job Type: PRODUCTION

Unit
1605



5.5" Casing

WELL	PHARAOH 2C	DATE: 1/8/2021							
DEPTH (Ft)	16845.00	K.B. to Wellhead		28.00	Rat Hole	12.00	20.00		
SHOE (Ft)	16833.00	0.0293	Accumulated		0.02220	Mud Wt.	10.6	0.83816794	
Rack#	Description		Closed End Displacement (Bbls)	Capacity (Bbls)	Length (Ft)	Length Accum. (FT)	Top To RT (Ft)	Weight (k#)	Comments
	Float Shoe		0.055084	0.04	1.88	1.88	16831.12	0.03	10K SINGLE VALVE FLOAT SHOE
	Pup Joint		0.406098	0.31	11.98	13.86	16819.14	0.23	5.500" 20# PUP JOINT
	Float Collar #1		0.450048	0.34	1.50	15.36	16817.64	0.26	10K SINGLE VALVE FLOAT COLLAR
	Float Collar #2		0.495756	0.38	1.56	16.92	16816.08	0.28	10K SINGLE VALVE FLOAT COLLAR
	Pup Joint		0.825381	0.63	11.25	28.17	16804.83	0.47	5.500" 20# PUP JOINT
	Wet Shoe Sub		0.951371	0.72	4.30	32.47	16800.53	0.54	WET SHOE PINNED@1660 PSI
	Pup Joint		1.101094	0.83	5.11	37.58	16795.42	0.63	5.500" 20# PUP JOINT
	Ball Seat Sub		1.121311	0.85	0.69	38.27	16794.73	0.64	CASING TEST SUB 4.250" BALL SEAT
1	Casing Joints		2.509838	1.90	47.39	85.66	16747.34	1.44	1 8.25" COMPOSITE
2	Casing Joints		3.889282	2.95	47.08	132.74	16700.26	2.23	
3	Casing Joints		5.272242	3.99	47.20	179.94	16653.06	3.02	2 8.25" COMPOSITE
4	Casing Joints		6.656667	5.04	47.25	227.19	16605.81	3.81	
5	Casing Joints		8.024098	6.08	46.67	273.86	16559.14	4.59	3 8.25" COMPOSITE
6	Casing Joints		9.183792	6.96	39.58	313.44	16519.56	5.25	
7	Casing Joints		10.416736	7.89	42.08	355.52	16477.48	5.96	4 8.25" COMPOSITE
8	Casing Joints		11.539805	8.74	38.33	393.85	16439.15	6.60	
9	Casing Joints		12.862114	9.75	45.13	438.98	16394.02	7.36	5 8.25" COMPOSITE
10	Casing Joints		14.131683	10.71	43.33	482.31	16350.69	8.09	
	Marker A		14.462773	10.96	11.30	493.61	16339.39	8.27	6 8.25" COMPOSITE
11	Casing Joints		15.854816	12.01	47.51	541.12	16291.88	9.07	
12	Casing Joints		17.244515	13.07	47.43	588.55	16244.45	9.87	7 8.25" COMPOSITE
13	Casing Joints		18.632749	14.12	47.38	635.93	16197.07	10.66	
14	Casing Joints		20.023034	15.17	47.45	683.38	16149.62	11.46	8 8.25" COMPOSITE
15	Casing Joints		21.350031	16.18	45.29	728.67	16104.33	12.21	
16	Casing Joints		22.739144	17.23	47.41	776.08	16056.92	13.01	9 8.25" COMPOSITE
17	Casing Joints		24.04358	18.22	44.52	820.60	16012.40	13.76	
18	Casing Joints		25.429763	19.27	47.31	867.91	15965.09	14.55	10 8.25" COMPOSITE
19	Casing Joints		26.781958	20.29	46.15	914.06	15918.94	15.32	
20	Casing Joints		28.164332	21.34	47.18	961.24	15871.76	16.11	11 8.25" COMPOSITE
21	Casing Joints		29.506565	22.36	45.81	1007.05	15825.95	16.88	
22	Casing Joints		30.8236	23.35	44.95	1052.00	15781.00	17.64	12 8.25" COMPOSITE
23	Casing Joints		32.181948	24.38	46.36	1098.36	15734.64	18.41	
24	Casing Joints		33.468804	25.36	43.92	1142.28	15690.72	19.15	13 8.25" COMPOSITE
25	Casing Joints		34.84356	26.40	46.92	1189.20	15643.80	19.93	
26	Casing Joints		36.086759	27.34	42.43	1231.63	15601.37	20.65	14 8.25" COMPOSITE
27	Casing Joints		37.474407	28.39	47.36	1278.99	15554.01	21.44	
28	Casing Joints		38.717606	29.34	42.43	1321.42	15511.58	22.15	15 8.25" COMPOSITE
29	Casing Joints		39.850344	30.19	38.66	1360.08	15472.92	22.80	
30	Casing Joints		41.211329	31.22	46.45	1406.53	15426.47	23.58	16 8.25" COMPOSITE
31	Casing Joints		42.36487	32.10	39.37	1445.90	15387.10	24.24	
32	Casing Joints		43.754862	33.15	47.44	1493.34	15339.66	25.03	17 8.25" COMPOSITE
33	Casing Joints		45.042011	34.13	43.93	1537.27	15295.73	25.77	
34	Casing Joints		46.33209	35.10	44.03	1581.30	15251.70	26.51	18 8.25" COMPOSITE
35	Casing Joints		47.669342	36.12	45.64	1626.94	15206.06	27.27	
36	Casing Joints		48.858336	37.02	40.58	1667.52	15165.48	27.95	19 8.25" COMPOSITE
37	Casing Joints		50.259462	38.08	47.82	1715.34	15117.66	28.75	
38	Casing Joints		51.342976	38.90	36.98	1752.32	15080.68	29.37	20 8.25" COMPOSITE
39	Casing Joints		52.717439	39.94	46.91	1799.23	15033.77	30.16	
40	Casing Joints		53.981441	40.90	43.14	1842.37	14990.63	30.88	21 8.25" COMPOSITE
41	Casing Joints		55.220538	41.84	42.29	1884.66	14948.34	31.59	
42	Casing Joints		56.608479	42.89	47.37	1932.03	14900.97	32.39	22 8.25" COMPOSITE
43	Casing Joints		57.87336	43.85	43.17	1975.20	14857.80	33.11	
44	Casing Joints		59.13912	44.81	43.20	2018.40	14814.60	33.84	23 8.25" COMPOSITE
45	Casing Joints		60.468754	45.82	45.38	2063.78	14769.22	34.60	
46	Casing Joints		61.854937	46.87	47.31	2111.09	14721.91	35.39	24 8.25" COMPOSITE

47	Casing Joints		63.24405	47.92	47.41	2158.50	14674.50	36.18	
48	Casing Joints		64.623494	48.96	47.08	2205.58	14627.42	36.97	25 8.25" COMPOSITE
49	Casing Joints		65.97774	49.99	46.22	2251.80	14581.20	37.75	
50	Casing Joints		67.333744	51.02	46.28	2298.08	14534.92	38.52	26 8.25" COMPOSITE
51	Casing Joints		68.517171	51.91	40.39	2338.47	14494.53	39.20	
52	Casing Joints		69.884602	52.95	46.67	2385.14	14447.86	39.98	27 8.25" COMPOSITE
53	Casing Joints		71.265804	54.00	47.14	2432.28	14400.72	40.77	
54	Casing Joints		72.429893	54.88	39.73	2472.01	14360.99	41.44	28 8.25" COMPOSITE
55	Casing Joints		73.434297	55.64	34.28	2506.29	14326.71	42.01	
56	Casing Joints		74.794696	56.67	46.43	2552.72	14280.28	42.79	29 8.25" COMPOSITE
57	Casing Joints		76.09503	57.66	44.38	2597.10	14235.90	43.54	
58	Casing Joints		77.424371	58.66	45.37	2642.47	14190.53	44.30	30 8.25" COMPOSITE
59	Casing Joints		78.808503	59.71	47.24	2689.71	14143.29	45.09	
60	Casing Joints		80.195858	60.76	47.35	2737.06	14095.94	45.88	31 8.25" COMPOSITE
61	Casing Joints		81.558015	61.79	46.49	2783.55	14049.45	46.66	
62	Casing Joints		82.926325	62.83	46.70	2830.25	14002.75	47.44	32 8.25" COMPOSITE
63	Casing Joints		84.086898	63.71	39.61	2869.86	13963.14	48.11	
64	Casing Joints		85.366429	64.68	43.67	2913.53	13919.47	48.84	33 8.25" COMPOSITE
65	Casing Joints		86.733274	65.72	46.65	2960.18	13872.82	49.62	
66	Casing Joints		88.102756	66.75	46.74	3006.92	13826.08	50.41	34 8.25" COMPOSITE
67	Casing Joints		89.472238	67.79	46.74	3053.66	13779.34	51.19	
68	Casing Joints		90.83	68.82	46.34	3100.00	13733.00	51.97	35 8.25" COMPOSITE
69	Casing Joints		92.164908	69.83	45.56	3145.56	13687.44	52.73	
70	Casing Joints		93.536148	70.87	46.80	3192.36	13640.64	53.51	36 8.25" COMPOSITE
71	Casing Joints		94.92028	71.92	47.24	3239.60	13593.40	54.31	
72	Casing Joints		96.155861	72.86	42.17	3281.77	13551.23	55.01	37 8.25" COMPOSITE
73	Casing Joints		97.511279	73.88	46.26	3328.03	13504.97	55.79	
74	Casing Joints		98.856442	74.90	45.91	3373.94	13459.06	56.56	38 8.25" COMPOSITE
75	Casing Joints		100.13568	75.87	43.66	3417.60	13415.40	57.29	
76	Casing Joints		101.417555	76.84	43.75	3461.35	13371.65	58.02	39 8.25" COMPOSITE
77	Casing Joints		102.753928	77.85	45.61	3506.96	13326.04	58.79	
78	Casing Joints		103.889596	78.71	38.76	3545.72	13287.28	59.44	40 8.25" COMPOSITE
79	Casing Joints		105.285448	79.77	47.64	3593.36	13239.64	60.24	
80	Casing Joints		106.568202	80.74	43.78	3637.14	13195.86	60.97	41 8.25" COMPOSITE
81	Casing Joints		107.919811	81.77	46.13	3683.27	13149.73	61.74	
82	Casing Joints		109.04288	82.62	38.33	3721.60	13111.40	62.39	42 8.25" COMPOSITE
83	Casing Joints		110.205211	83.50	39.67	3761.27	13071.73	63.05	
84	Casing Joints		111.338828	84.36	38.69	3799.96	13033.04	63.70	43 8.25" COMPOSITE
85	Casing Joints		112.726769	85.41	47.37	3847.33	12985.67	64.49	
86	Casing Joints		114.060212	86.42	45.51	3892.84	12940.16	65.26	44 8.25" COMPOSITE
87	Casing Joints		115.370508	87.41	44.72	3937.56	12895.44	66.01	
88	Casing Joints		116.741455	88.45	46.79	3984.35	12848.65	66.79	45 8.25" COMPOSITE
89	Casing Joints		118.132033	89.51	47.46	4031.81	12801.19	67.59	
90	Casing Joints		119.411564	90.48	43.67	4075.48	12757.52	68.32	46 8.25" COMPOSITE
91	Casing Joints		120.601144	91.38	40.60	4116.08	12716.92	69.00	
92	Casing Joints		121.898255	92.36	44.27	4160.35	12672.65	69.74	47 8.25" COMPOSITE
93	Casing Joints		123.113912	93.28	41.49	4201.84	12631.16	70.44	
94	Casing Joints		124.500974	94.33	47.34	4249.18	12583.82	71.23	48 8.25" COMPOSITE
95	Casing Joints		125.894482	95.39	47.56	4296.74	12536.26	72.03	
96	Casing Joints		127.117464	96.31	41.74	4338.48	12494.52	72.73	49 8.25" COMPOSITE
97	Casing Joints		128.344841	97.24	41.89	4380.37	12452.63	73.43	
98	Casing Joints		129.627302	98.22	43.77	4424.14	12408.86	74.16	50 8.25" COMPOSITE
99	Casing Joints		130.930566	99.20	44.48	4468.62	12364.38	74.91	
100	Casing Joints		132.318507	100.25	47.37	4515.99	12317.01	75.70	51 8.25" COMPOSITE
101	Casing Joints		133.709378	101.31	47.47	4563.46	12269.54	76.50	
102	Casing Joints		135.030515	102.31	45.09	4608.55	12224.45	77.25	52 8.25" COMPOSITE
103	Casing Joints		136.310925	103.28	43.70	4652.25	12180.75	77.99	
104	Casing Joints		137.598074	104.26	43.93	4696.18	12136.82	78.72	53 8.25" COMPOSITE
105	Casing Joints		138.761577	105.14	39.71	4735.89	12097.11	79.39	
106	Casing Joints		140.133403	106.18	46.82	4782.71	12050.29	80.17	54 8.25" COMPOSITE
107	Casing Joints		141.414692	107.15	43.73	4826.44	12006.56	80.91	
108	Casing Joints		142.780072	108.18	46.60	4873.04	11959.96	81.69	55 8.25" COMPOSITE
109	Casing Joints		144.054036	109.15	43.48	4916.52	11916.48	82.42	
110	Casing Joints		145.441977	110.20	47.37	4963.89	11869.11	83.21	56 8.25" COMPOSITE

111	Casing Joints		146.817319	111.24	46.94	5010.83	11822.17	84.00	
	Marker B		147.146065	111.49	11.22	5022.05	11810.95	84.19	57 8.25" COMPOSITE
112	Casing Joints		148.508515	112.52	46.50	5068.55	11764.45	84.97	
113	Casing Joints		149.810607	113.51	44.44	5112.99	11720.01	85.71	58 8.25" COMPOSITE
114	Casing Joints		151.12061	114.50	44.71	5157.70	11675.30	86.46	
115	Casing Joints		152.467824	115.52	45.98	5203.68	11629.32	87.23	59 8.25" COMPOSITE
116	Casing Joints		153.747941	116.49	43.69	5247.37	11585.63	87.96	
117	Casing Joints		155.139691	117.55	47.50	5294.87	11538.13	88.76	60 8.25" COMPOSITE
118	Casing Joints		156.522358	118.59	47.19	5342.06	11490.94	89.55	
119	Casing Joints		157.788997	119.55	43.23	5385.29	11447.71	90.28	61 8.25" COMPOSITE
120	Casing Joints		159.176938	120.61	47.37	5432.66	11400.34	91.07	
121	Casing Joints		160.502177	121.61	45.23	5477.89	11355.11	91.83	62 8.25" COMPOSITE
122	Casing Joints		161.872538	122.65	46.77	5524.66	11308.34	92.61	
123	Casing Joints		163.265167	123.70	47.53	5572.19	11260.81	93.41	63 8.25" COMPOSITE
124	Casing Joints		164.657796	124.76	47.53	5619.72	11213.28	94.21	
125	Casing Joints		166.050132	125.81	47.52	5667.24	11165.76	95.00	64 8.25" COMPOSITE
126	Casing Joints		167.438073	126.86	47.37	5714.61	11118.39	95.80	
127	Casing Joints		168.810778	127.90	46.85	5761.46	11071.54	96.58	65 8.25" COMPOSITE
128	Casing Joints		170.136896	128.91	45.26	5806.72	11026.28	97.34	
129	Casing Joints		171.457447	129.91	45.07	5851.79	10981.21	98.10	66 8.25" COMPOSITE
130	Casing Joints		172.848025	130.96	47.46	5899.25	10933.75	98.89	
131	Casing Joints		174.165353	131.96	44.96	5944.21	10888.79	99.64	67 8.25" COMPOSITE
132	Casing Joints		175.556517	133.02	47.48	5991.69	10841.31	100.44	
133	Casing Joints		176.843373	133.99	43.92	6035.61	10797.39	101.18	68 8.25" COMPOSITE
134	Casing Joints		178.235123	135.05	47.50	6083.11	10749.89	101.97	
135	Casing Joints		179.623943	136.10	47.40	6130.51	10702.49	102.77	69 8.25" COMPOSITE
136	Casing Joints		180.960609	137.11	45.62	6176.13	10656.87	103.53	
137	Casing Joints		182.332728	138.15	46.83	6222.96	10610.04	104.32	70 8.25" COMPOSITE
138	Casing Joints		183.720669	139.20	47.37	6270.33	10562.67	105.11	
139	Casing Joints		185.081068	140.23	46.43	6316.76	10516.24	105.89	71 8.25" COMPOSITE
140	Casing Joints		186.377886	141.21	44.26	6361.02	10471.98	106.63	
141	Casing Joints		187.659468	142.19	43.74	6404.76	10428.24	107.37	72 8.25" COMPOSITE
142	Casing Joints		189.041256	143.23	47.16	6451.92	10381.08	108.16	
143	Casing Joints		190.428318	144.28	47.34	6499.26	10333.74	108.95	73 8.25" COMPOSITE
144	Casing Joints		191.820947	145.34	47.53	6546.79	10286.21	109.75	
145	Casing Joints		193.21299	146.39	47.51	6594.30	10238.70	110.54	74 8.25" COMPOSITE
146	Casing Joints		194.342505	147.25	38.55	6632.85	10200.15	111.19	
147	Casing Joints		195.624966	148.22	43.77	6676.62	10156.38	111.92	75 8.25" COMPOSITE
148	Casing Joints		197.003531	149.27	47.05	6723.67	10109.33	112.71	
149	Casing Joints		198.336681	150.28	45.50	6769.17	10063.83	113.47	76 8.25" COMPOSITE
150	Casing Joints		199.672761	151.29	45.60	6814.77	10018.23	114.24	
151	Casing Joints		201.046052	152.33	46.87	6861.64	9971.36	115.02	77 8.25" COMPOSITE
152	Casing Joints		202.416999	153.37	46.79	6908.43	9924.57	115.81	
153	Casing Joints		203.80787	154.42	47.47	6955.90	9877.10	116.60	78 8.25" COMPOSITE
154	Casing Joints		205.00331	155.33	40.80	6996.70	9836.30	117.29	
155	Casing Joints		206.384219	156.37	47.13	7043.83	9789.17	118.08	79 8.25" COMPOSITE
156	Casing Joints		207.724987	157.39	45.76	7089.59	9743.41	118.85	
157	Casing Joints		209.114686	158.44	47.43	7137.02	9695.98	119.64	80 8.25" COMPOSITE
158	Casing Joints		210.475378	159.47	46.44	7183.46	9649.54	120.42	
159	Casing Joints		211.808235	160.48	45.49	7228.95	9604.05	121.18	81 8.25" COMPOSITE
160	Casing Joints		213.165118	161.51	46.31	7275.26	9557.74	121.96	
161	Casing Joints		214.552766	162.56	47.36	7322.62	9510.38	122.75	82 8.25" COMPOSITE
162	Casing Joints		215.933089	163.61	47.11	7369.73	9463.27	123.54	
163	Casing Joints		217.209104	164.57	43.55	7413.28	9419.72	124.27	83 8.25" COMPOSITE
164	Casing Joints		218.574191	165.61	46.59	7459.87	9373.13	125.05	
165	Casing Joints		219.930488	166.64	46.29	7506.16	9326.84	125.83	84 8.25" COMPOSITE
166	Casing Joints		221.272721	167.65	45.81	7551.97	9281.03	126.60	
167	Casing Joints		222.590049	168.65	44.96	7596.93	9236.07	127.35	85 8.25" COMPOSITE
168	Casing Joints		223.906205	169.65	44.92	7641.85	9191.15	128.10	
169	Casing Joints		225.254005	170.67	46.00	7687.85	9145.15	128.87	86 8.25" COMPOSITE
170	Casing Joints		226.634621	171.72	47.12	7734.97	9098.03	129.66	
171	Casing Joints		227.9833	172.74	46.03	7781.00	9052.00	130.44	87 8.25" COMPOSITE
172	Casing Joints		229.343699	173.77	46.43	7827.43	9005.57	131.21	
173	Casing Joints		230.579573	174.71	42.18	7869.61	8963.39	131.92	88 8.25" COMPOSITE

174	Casing Joints		231.972202	175.76	47.53	7917.14	8915.86	132.72	
175	Casing Joints		233.266383	176.74	44.17	7961.31	8871.69	133.46	89 8.25" COMPOSITE
176	Casing Joints		234.58166	177.74	44.89	8006.20	8826.80	134.21	
177	Casing Joints		235.97341	178.79	47.50	8053.70	8779.30	135.01	90 8.25" COMPOSITE
178	Casing Joints		237.361937	179.84	47.39	8101.09	8731.91	135.80	
179	Casing Joints		238.752222	180.90	47.45	8148.54	8684.46	136.60	91 8.25" COMPOSITE
180	Casing Joints		240.121411	181.93	46.73	8195.27	8637.73	137.38	
181	Casing Joints		241.450752	182.94	45.37	8240.64	8592.36	138.14	92 8.25" COMPOSITE
182	Casing Joints		242.822578	183.98	46.82	8287.46	8545.54	138.93	
183	Casing Joints		244.204952	185.03	47.18	8334.64	8498.36	139.72	93 8.25" COMPOSITE
184	Casing Joints		245.593479	186.08	47.39	8382.03	8450.97	140.51	
185	Casing Joints		246.985522	187.14	47.51	8429.54	8403.46	141.31	94 8.25" COMPOSITE
186	Casing Joints		248.356762	188.17	46.80	8476.34	8356.66	142.09	
187	Casing Joints		249.69167	189.19	45.56	8521.90	8311.10	142.86	95 8.25" COMPOSITE
188	Casing Joints		250.998157	190.18	44.59	8566.49	8266.51	143.60	
189	Casing Joints		252.290287	191.16	44.10	8610.59	8222.41	144.34	96 8.25" COMPOSITE
190	Casing Joints		253.636915	192.18	45.96	8656.55	8176.45	145.11	
191	Casing Joints		255.0272	193.23	47.45	8704.00	8129.00	145.91	97 8.25" COMPOSITE
192	Casing Joints		256.332808	194.22	44.56	8748.56	8084.44	146.66	
193	Casing Joints		257.719284	195.27	47.32	8795.88	8037.12	147.45	98 8.25" COMPOSITE
194	Casing Joints		259.104588	196.32	47.28	8843.16	7989.84	148.24	
195	Casing Joints		260.492822	197.37	47.38	8890.54	7942.46	149.04	99 8.25" COMPOSITE
196	Casing Joints		261.79843	198.36	44.56	8935.10	7897.90	149.78	
197	Casing Joints		263.147988	199.38	46.06	8981.16	7851.84	150.55	100 8.25" COMPOSITE
198	Casing Joints		264.531534	200.43	47.22	9028.38	7804.62	151.35	
199	Casing Joints		265.852378	201.43	45.08	9073.46	7759.54	152.10	101 8.25" COMPOSITE
200	Casing Joints		267.181426	202.44	45.36	9118.82	7714.18	152.86	
201	Casing Joints		268.483225	203.42	44.43	9163.25	7669.75	153.61	102 8.25" COMPOSITE
202	Casing Joints		269.868529	204.47	47.28	9210.53	7622.47	154.40	
203	Casing Joints		271.223068	205.50	46.23	9256.76	7576.24	155.17	103 8.25" COMPOSITE
204	Casing Joints		272.610716	206.55	47.36	9304.12	7528.88	155.97	
205	Casing Joints		273.998657	207.60	47.37	9351.49	7481.51	156.76	104 8.25" COMPOSITE
206	Casing Joints		275.363451	208.64	46.58	9398.07	7434.93	157.54	
207	Casing Joints		276.744653	209.68	47.14	9445.21	7387.79	158.33	105 8.25" COMPOSITE
208	Casing Joints		278.073115	210.69	45.34	9490.55	7342.45	159.09	
209	Casing Joints		279.459298	211.74	47.31	9537.86	7295.14	159.89	106 8.25" COMPOSITE
210	Casing Joints		280.760511	212.73	44.41	9582.27	7250.73	160.63	
211	Casing Joints		281.895886	213.59	38.75	9621.02	7211.98	161.28	107 8.25" COMPOSITE
212	Casing Joints		283.175124	214.56	43.66	9664.68	7168.32	162.01	
213	Casing Joints		284.431215	215.51	42.87	9707.55	7125.45	162.73	108 8.25" COMPOSITE
	Marker C		285.121816	216.03	23.57	9731.12	7101.88	163.13	EOB 7105' 109 8.25" COMPOSITE
214	Casing Joints		286.247522	216.88	38.42	9769.54	7063.46	163.77	110 8.25" COMPOSITE
215	Casing Joints		287.49453	217.83	42.56	9812.10	7020.90	164.48	111 8.25" COMPOSITE
216	Casing Joints		288.762927	218.79	43.29	9855.39	6977.61	165.21	112 8.25" COMPOSITE
217	Casing Joints		290.043923	219.76	43.72	9899.11	6933.89	165.94	113 8.25" COMPOSITE
218	Casing Joints		291.206254	220.64	39.67	9938.78	6894.22	166.61	114 8.25" COMPOSITE
219	Casing Joints		292.485199	221.61	43.65	9982.43	6850.57	167.34	115 8.25" COMPOSITE
220	Casing Joints		293.87314	222.66	47.37	10029.80	6803.20	168.13	116 8.25" COMPOSITE
221	Casing Joints		295.050414	223.55	40.18	10069.98	6763.02	168.81	117 8.25" COMPOSITE
222	Casing Joints		296.332582	224.53	43.76	10113.74	6719.26	169.54	118 8.25" COMPOSITE
223	Casing Joints		297.613578	225.50	43.72	10157.46	6675.54	170.27	119 8.25" COMPOSITE
224	Casing Joints		299.004742	226.55	47.48	10204.94	6628.06	171.07	120 8.25" COMPOSITE
225	Casing Joints		300.18143	227.44	40.16	10245.10	6587.90	171.74	121 8.25" COMPOSITE
226	Casing Joints		301.455101	228.41	43.47	10288.57	6544.43	172.47	122 8.25" COMPOSITE
227	Casing Joints		302.727014	229.37	43.41	10331.98	6501.02	173.20	123 8.25" COMPOSITE
228	Casing Joints		303.976073	230.32	42.63	10374.61	6458.39	173.91	124 8.25" COMPOSITE
229	Casing Joints		305.256483	231.29	43.70	10418.31	6414.69	174.65	125 8.25" COMPOSITE
230	Casing Joints		306.536014	232.26	43.67	10461.98	6371.02	175.38	126 8.25" COMPOSITE
231	Casing Joints		307.783608	233.20	42.58	10504.56	6328.44	176.09	127 8.25" COMPOSITE
232	Casing Joints		308.947697	234.08	39.73	10544.29	6288.71	176.76	128 8.25" COMPOSITE
233	Casing Joints		310.224884	235.05	43.59	10587.88	6245.12	177.49	129 8.25" COMPOSITE
234	Casing Joints		311.414464	235.95	40.60	10628.48	6204.52	178.17	130 8.25" COMPOSITE
235	Casing Joints		312.696339	236.92	43.75	10672.23	6160.77	178.90	131 8.25" COMPOSITE
236	Casing Joints		313.939831	237.87	42.44	10714.67	6118.33	179.61	132 8.25" COMPOSITE

237	Casing Joints		315.065244	238.72	38.41	10753.08	6079.92	180.26	133 8.25" COMPOSITE
238	Casing Joints		316.343896	239.69	43.64	10796.72	6036.28	180.99	134 8.25" COMPOSITE
	Marker D		317.048561	247.68	24.05	10820.77	6012.23	181.39	KOP 6013' 135 8.25" COMPOSITE
239	Casing Joints		318.238434	240.59	40.61	10861.38	5971.62	182.07	1 8.50" BOWSPRING
240	Casing Joints		319.520602	241.56	43.76	10905.14	5927.86	182.81	2 8.50" BOWSPRING
241	Casing Joints		320.797203	242.53	43.57	10948.71	5884.29	183.54	3 8.50" BOWSPRING
242	Casing Joints		322.038644	243.47	42.37	10991.08	5841.92	184.25	4 8.50" BOWSPRING
243	Casing Joints		323.247855	244.38	41.27	11032.35	5800.65	184.94	5 8.50" BOWSPRING
244	Casing Joints		324.480799	245.32	42.08	11074.43	5758.57	185.64	6 8.50" BOWSPRING
245	Casing Joints		325.670086	246.22	40.59	11115.02	5717.98	186.33	7 8.50" BOWSPRING
246	Casing Joints		326.895119	247.15	41.81	11156.83	5676.17	187.03	8 8.50" BOWSPRING
247	Casing Joints		328.287455	248.74	47.52	11204.35	5628.65	187.82	9 8.50" BOWSPRING
248	Casing Joints		329.417849	249.59	38.58	11242.93	5590.07	188.47	10 8.50" BOWSPRING
249	Casing Joints		330.699431	250.56	43.74	11286.67	5546.33	189.20	11 8.50" BOWSPRING
250	Casing Joints		331.919776	251.49	41.65	11328.32	5504.68	189.90	12 8.50" BOWSPRING
251	Casing Joints		333.1996	252.46	43.68	11372.00	5461.00	190.63	13 8.50" BOWSPRING
252	Casing Joints		334.590178	253.51	47.46	11419.46	5413.54	191.43	14 8.50" BOWSPRING
253	Casing Joints		335.726139	254.37	38.77	11458.23	5374.77	192.08	15 8.50" BOWSPRING
254	Casing Joints		336.928025	255.28	41.02	11499.25	5333.75	192.77	16 8.50" BOWSPRING
255	Casing Joints		338.211072	256.26	43.79	11543.04	5289.96	193.50	17 8.50" BOWSPRING
256	Casing Joints		339.589637	257.30	47.05	11590.09	5242.91	194.29	18 8.50" BOWSPRING
257	Casing Joints		340.942711	258.33	46.18	11636.27	5196.73	195.06	19 8.50" BOWSPRING
258	Casing Joints		342.277033	259.34	45.54	11681.81	5151.19	195.83	20 8.50" BOWSPRING
259	Casing Joints		343.474817	260.24	40.88	11722.69	5110.31	196.51	21 8.50" BOWSPRING
260	Casing Joints		344.626893	261.12	39.32	11762.01	5070.99	197.17	22 8.50" BOWSPRING
261	Casing Joints		345.905838	262.09	43.65	11805.66	5027.34	197.90	23 8.50" BOWSPRING
262	Casing Joints		346.960638	262.88	36.00	11841.66	4991.34	198.51	24 8.50" BOWSPRING
263	Casing Joints		348.107733	263.75	39.15	11880.81	4952.19	199.16	25 8.50" BOWSPRING
264	Casing Joints		349.386678	264.72	43.65	11924.46	4908.54	199.89	26 8.50" BOWSPRING
265	Casing Joints		350.739752	265.75	46.18	11970.64	4862.36	200.67	27 8.50" BOWSPRING
266	Casing Joints		352.022213	266.72	43.77	12014.41	4818.59	201.40	28 8.50" BOWSPRING
267	Casing Joints		353.304674	267.69	43.77	12058.18	4774.82	202.14	29 8.50" BOWSPRING
268	Casing Joints		354.692029	268.74	47.35	12105.53	4727.47	202.93	30 8.50" BOWSPRING
269	Casing Joints		356.0829	269.80	47.47	12153.00	4680.00	203.73	31 8.50" BOWSPRING
270	Casing Joints		357.246696	270.68	39.72	12192.72	4640.28	204.39	32 8.50" BOWSPRING
271	Casing Joints		358.400823	271.55	39.39	12232.11	4600.89	205.05	33 8.50" BOWSPRING
272	Casing Joints		359.613257	272.47	41.38	12273.49	4559.51	205.74	34 8.50" BOWSPRING
273	Casing Joints		360.751269	273.33	38.84	12312.33	4520.67	206.40	35 8.50" BOWSPRING
274	Casing Joints		362.031972	274.30	43.71	12356.04	4476.96	207.13	36 8.50" BOWSPRING
275	Casing Joints		363.435442	275.37	47.90	12403.94	4429.06	207.93	37 8.50" BOWSPRING
276	Casing Joints		364.685087	276.31	42.65	12446.59	4386.41	208.65	38 8.50" BOWSPRING
277	Casing Joints		365.966083	277.28	43.72	12490.31	4342.69	209.38	39 8.50" BOWSPRING
278	Casing Joints		367.128414	278.17	39.67	12529.98	4303.02	210.04	40 8.50" BOWSPRING
279	Casing Joints		368.25412	279.02	38.42	12568.40	4264.60	210.69	41 8.50" BOWSPRING
280	Casing Joints		369.536288	279.99	43.76	12612.16	4220.84	211.42	42 8.50" BOWSPRING
281	Casing Joints		370.901668	281.02	46.60	12658.76	4174.24	212.20	43 8.50" BOWSPRING
282	Casing Joints		372.255328	282.05	46.20	12704.96	4128.04	212.98	44 8.50" BOWSPRING
283	Casing Joints		373.556834	283.04	44.42	12749.38	4083.62	213.72	45 8.50" BOWSPRING
284	Casing Joints		374.827282	284.00	43.36	12792.74	4040.26	214.45	46 8.50" BOWSPRING
285	Casing Joints		375.997817	284.89	39.95	12832.69	4000.31	215.12	47 8.50" BOWSPRING
286	Casing Joints		377.314266	285.88	44.93	12877.62	3955.38	215.87	48 8.50" BOWSPRING
287	Casing Joints		378.63804	286.89	45.18	12922.80	3910.20	216.63	49 8.50" BOWSPRING
288	Casing Joints		380.01514	287.93	47.00	12969.80	3863.20	217.42	50 8.50" BOWSPRING
289	Casing Joints		381.318404	288.92	44.48	13014.28	3818.72	218.16	51 8.50" BOWSPRING
290	Casing Joints		382.693746	289.96	46.94	13061.22	3771.78	218.95	52 8.50" BOWSPRING
291	Casing Joints		384.031877	290.97	45.67	13106.89	3726.11	219.72	53 8.50" BOWSPRING
292	Casing Joints		385.349791	291.97	44.98	13151.87	3681.13	220.47	54 8.50" BOWSPRING
293	Casing Joints		386.641628	292.95	44.09	13195.96	3637.04	221.21	55 8.50" BOWSPRING
294	Casing Joints		387.971848	293.96	45.40	13241.36	3591.64	221.97	56 8.50" BOWSPRING
295	Casing Joints		389.335763	294.99	46.55	13287.91	3545.09	222.75	57 8.50" BOWSPRING
296	Casing Joints		390.664225	296.00	45.34	13333.25	3499.75	223.51	58 8.50" BOWSPRING
297	Casing Joints		391.766198	296.83	37.61	13370.86	3462.14	224.14	59 8.50" BOWSPRING
298	Casing Joints		393.154139	297.88	47.37	13418.23	3414.77	224.93	60 8.50" BOWSPRING
299	Casing Joints		394.535048	298.93	47.13	13465.36	3367.64	225.72	61 8.50" BOWSPRING

300	Casing Joints		395.840363	299.92	44.55	13509.91	3323.09	226.47	62 8.50" BOWSPRING
301	Casing Joints		397.134544	300.90	44.17	13554.08	3278.92	227.21	63 8.50" BOWSPRING
302	Casing Joints		398.295996	301.78	39.64	13593.72	3239.28	227.88	64 8.50" BOWSPRING
303	Casing Joints		399.432836	302.64	38.80	13632.52	3200.48	228.53	65 8.50" BOWSPRING
304	Casing Joints		400.81228	303.69	47.08	13679.60	3153.40	229.32	66 8.50" BOWSPRING
305	Casing Joints		401.947069	304.55	38.73	13718.33	3114.67	229.97	67 8.50" BOWSPRING
306	Casing Joints		403.108521	305.43	39.64	13757.97	3075.03	230.63	68 8.50" BOWSPRING
307	Casing Joints		404.233055	306.28	38.38	13796.35	3036.65	231.27	69 8.50" BOWSPRING
308	Casing Joints		405.39187	307.16	39.55	13835.90	2997.10	231.94	70 8.50" BOWSPRING
309	Casing Joints		406.487104	307.99	37.38	13873.28	2959.72	232.56	71 8.50" BOWSPRING
310	Casing Joints		407.60402	308.83	38.12	13911.40	2921.60	233.20	72 8.50" BOWSPRING
311	Casing Joints		408.65882	309.63	36.00	13947.40	2885.60	233.81	73 8.50" BOWSPRING
312	Casing Joints		409.826718	310.52	39.86	13987.26	2845.74	234.47	74 8.50" BOWSPRING
313	Casing Joints		411.193856	311.55	46.66	14033.92	2799.08	235.26	75 8.50" BOWSPRING
314	Casing Joints		412.570077	312.60	46.97	14080.89	2752.11	236.04	76 8.50" BOWSPRING
315	Casing Joints		413.737096	313.48	39.83	14120.72	2712.28	236.71	77 8.50" BOWSPRING
316	Casing Joints		414.898255	314.36	39.63	14160.35	2672.65	237.38	78 8.50" BOWSPRING
317	Casing Joints		416.040955	315.23	39.00	14199.35	2633.65	238.03	79 8.50" BOWSPRING
318	Casing Joints		417.174572	316.08	38.69	14238.04	2594.96	238.68	80 8.50" BOWSPRING
319	Casing Joints		418.482524	317.08	44.64	14282.68	2550.32	239.43	81 8.50" BOWSPRING
320	Casing Joints		419.837649	318.10	46.25	14328.93	2504.07	240.20	82 8.50" BOWSPRING
321	Casing Joints		421.23731	319.16	47.77	14376.70	2456.30	241.00	83 8.50" BOWSPRING
322	Casing Joints		422.568995	320.17	45.45	14422.15	2410.85	241.76	84 8.50" BOWSPRING
323	Casing Joints		423.951955	321.22	47.20	14469.35	2363.65	242.55	85 8.50" BOWSPRING
324	Casing Joints		425.268697	322.22	44.94	14514.29	2318.71	243.31	86 8.50" BOWSPRING
325	Casing Joints		426.655466	323.27	47.33	14561.62	2271.38	244.10	87 8.50" BOWSPRING
326	Casing Joints		427.97045	324.26	44.88	14606.50	2226.50	244.85	88 8.50" BOWSPRING
327	Casing Joints		429.351359	325.31	47.13	14653.63	2179.37	245.64	89 8.50" BOWSPRING
328	Casing Joints		430.644954	326.29	44.15	14697.78	2135.22	246.38	90 8.50" BOWSPRING
329	Casing Joints		432.047545	327.35	47.87	14745.65	2087.35	247.19	91 8.50" BOWSPRING
330	Casing Joints		433.363701	328.35	44.92	14790.57	2042.43	247.94	92 8.50" BOWSPRING
331	Casing Joints		434.749005	329.40	47.28	14837.85	1995.15	248.73	93 8.50" BOWSPRING
332	Casing Joints		436.123468	330.44	46.91	14884.76	1948.24	249.52	94 8.50" BOWSPRING
333	Casing Joints		437.449	331.45	45.24	14930.00	1903.00	250.28	95 8.50" BOWSPRING
334	Casing Joints		438.821412	332.49	46.84	14976.84	1856.16	251.06	96 8.50" BOWSPRING
335	Casing Joints		440.149581	333.49	45.33	15022.17	1810.83	251.82	97 8.50" BOWSPRING
336	Casing Joints		441.475406	334.50	45.25	15067.42	1765.58	252.58	98 8.50" BOWSPRING
337	Casing Joints		442.867449	335.55	47.51	15114.93	1718.07	253.38	99 8.50" BOWSPRING
338	Casing Joints		444.259492	336.61	47.51	15162.44	1670.56	254.17	100 8.50" BOWSPRING
339	Casing Joints		445.610515	337.63	46.11	15208.55	1624.45	254.95	101 8.50" BOWSPRING
340	Casing Joints		446.987615	338.67	47.00	15255.55	1577.45	255.73	102 8.50" BOWSPRING
341	Casing Joints		448.379658	339.73	47.51	15303.06	1529.94	256.53	103 8.50" BOWSPRING
342	Casing Joints		449.656259	340.70	43.57	15346.63	1486.37	257.26	104 8.50" BOWSPRING
343	Casing Joints		451.035117	341.74	47.06	15393.69	1439.31	258.05	105 8.50" BOWSPRING
344	Casing Joints		452.40079	342.77	46.61	15440.30	1392.70	258.83	106 8.50" BOWSPRING
345	Casing Joints		453.770272	343.81	46.74	15487.04	1345.96	259.61	107 8.50" BOWSPRING
346	Casing Joints		455.148251	344.86	47.03	15534.07	1298.93	260.40	108 8.50" BOWSPRING
347	Casing Joints		456.521835	345.90	46.88	15580.95	1252.05	261.19	109 8.50" BOWSPRING
348	Casing Joints		457.896005	346.94	46.90	15627.85	1205.15	261.98	110 8.50" BOWSPRING
349	Casing Joints		459.287169	347.99	47.48	15675.33	1157.67	262.77	111 8.50" BOWSPRING
350	Casing Joints		460.608013	348.99	45.08	15720.41	1112.59	263.53	112 8.50" BOWSPRING
351	Casing Joints		461.99947	350.05	47.49	15767.90	1065.10	264.32	113 8.50" BOWSPRING
352	Casing Joints		463.279001	351.02	43.67	15811.57	1021.43	265.06	114 8.50" BOWSPRING
353	Casing Joints		464.418185	351.88	38.88	15850.45	982.55	265.71	115 8.50" BOWSPRING
354	Casing Joints		465.695665	352.85	43.60	15894.05	938.95	266.44	116 8.50" BOWSPRING
355	Casing Joints		466.935641	353.79	42.32	15936.37	896.63	267.15	117 8.50" BOWSPRING
356	Casing Joints		468.083615	354.66	39.18	15975.55	857.45	267.80	118 8.50" BOWSPRING
357	Casing Joints		469.475951	355.71	47.52	16023.07	809.93	268.60	119 8.50" BOWSPRING
358	Casing Joints		470.645021	356.60	39.90	16062.97	770.03	269.27	120 8.50" BOWSPRING
359	Casing Joints		471.805594	357.48	39.61	16102.58	730.42	269.93	121 8.50" BOWSPRING
360	Casing Joints		472.956791	358.35	39.29	16141.87	691.13	270.59	122 8.50" BOWSPRING
361	Casing Joints		474.11502	359.23	39.53	16181.40	651.60	271.25	123 8.50" BOWSPRING
362	Casing Joints		475.400118	360.20	43.86	16225.26	607.74	271.99	124 8.50" BOWSPRING
363	Casing Joints		476.676719	361.17	43.57	16268.83	564.17	272.72	125 8.50" BOWSPRING

364	Casing Joints		478.023933	362.19	45.98	16314.81	518.19	273.49	126 8.50" BOWSPRING
365	Casing Joints		479.277973	363.14	42.80	16357.61	475.39	274.21	
366	Casing Joints		480.445285	364.02	39.84	16397.45	435.55	274.88	
367	Casing Joints		481.620801	364.91	40.12	16437.57	395.43	275.55	
368	Casing Joints		482.901797	365.88	43.72	16481.29	351.71	276.28	
369	Casing Joints		484.212972	366.88	44.75	16526.04	306.96	277.03	
370	Casing Joints		485.491917	367.85	43.65	16569.69	263.31	277.76	
371	Casing Joints		486.774085	368.82	43.76	16613.45	219.55	278.50	
372	Casing Joints		488.163198	369.87	47.41	16660.86	172.14	279.29	
373	Casing Joints		489.357466	370.78	40.76	16701.62	131.38	279.98	
374	Casing Joints		490.519797	371.66	39.67	16741.29	91.71	280.64	
375	Casing Joints		491.907738	372.71	47.37	16788.66	44.34	281.43	
376	Casing Joints		493.294214	373.76	47.32	16835.98	-2.98	282.23	
377	Casing Joints				47.32				1 OUT JOINT
378	Casing Joints				43.41				2 OUT JOINT
379	Casing Joints				47.16				3 OUT JOINT
380	Casing Joints				39.46				4 OUT JOINT
381	Casing Joints				47.45				5 OUT JOINT
382	Casing Joints				47.73				6 OUT JOINT
383	Casing Joints				43.43				7 OUT JOINT
1	MARKER E				23.06				1 OUT MARKER
2	MARKER F				22.78				2 OUT MARKER
3	MARKER G				11.40				3 OUT MARKER
4	MARKER H				11.23				4 OUT MARKER