

OWN Resources Operating LLC, State 36-10
125-11256

Inspection #688309791

2/23/2021

Routine Inspection



OWN RESOURCES OPERATING

STATE 36-07

SWNE/4 SEC. 36-T1N-R46W

API #05-125-11257-00

YUMA COUNTY, CO

PH: 970-332-3585 or 911

OWN RESOURCES OPERATING

STATE 36-10

NWSE/4 SEC. 36-T1N-R46W

API #05-125-11256-00

YUMA COUNTY, CO

PH: 970-332-3585 or 911

OWN RESOURCES OPERATING

STATE 36-15

SWSE/4 SEC. 36-T1N-R46W

API #05-125-11288-00

YUMA COUNTY, CO

PH: 970-332-3585 or 911

OWN RESOURCES OPERATING

STATE 36-16

SESE/4 SEC. 36-T1N-R46W

API #05-125-11287-00

YUMA COUNTY, CO

PH: 970-332-3585 or 911

Colorado Oil and Gas Conservation Commission

40.00302, -102.45925, 3799.2ft, 332°

02/23/2021 01:59:46 PM

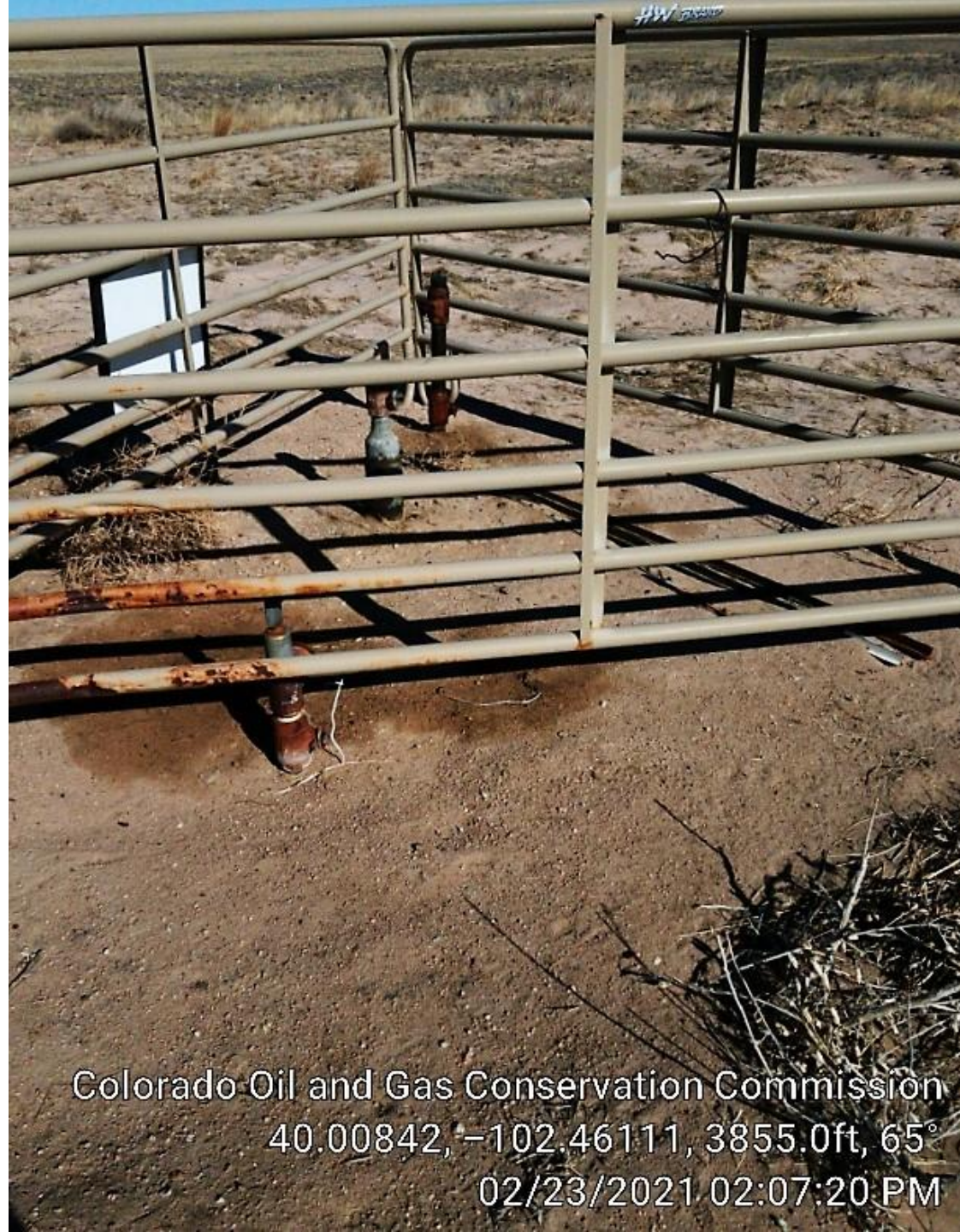
OWN RESOURCES OPERATING

STATE 36-10
SWNE SEC.36-T1N-R46W
RD 30 & RD V, W 1/2, N 1/2 INTO
YUMA COUNTY, CO
IN CASE OF EMERGENCY CALL: 970-332-3585 OR 911

Colorado Oil and Gas Conservation Commission
40.00845, -102.46109, 3858.3ft, 154°
02/23/2021 02:07:08 PM



Colorado Oil and Gas Conservation Commission
40.00844, -102.46111, 3855.0ft, 45°
02/23/2021 02:07:15 PM



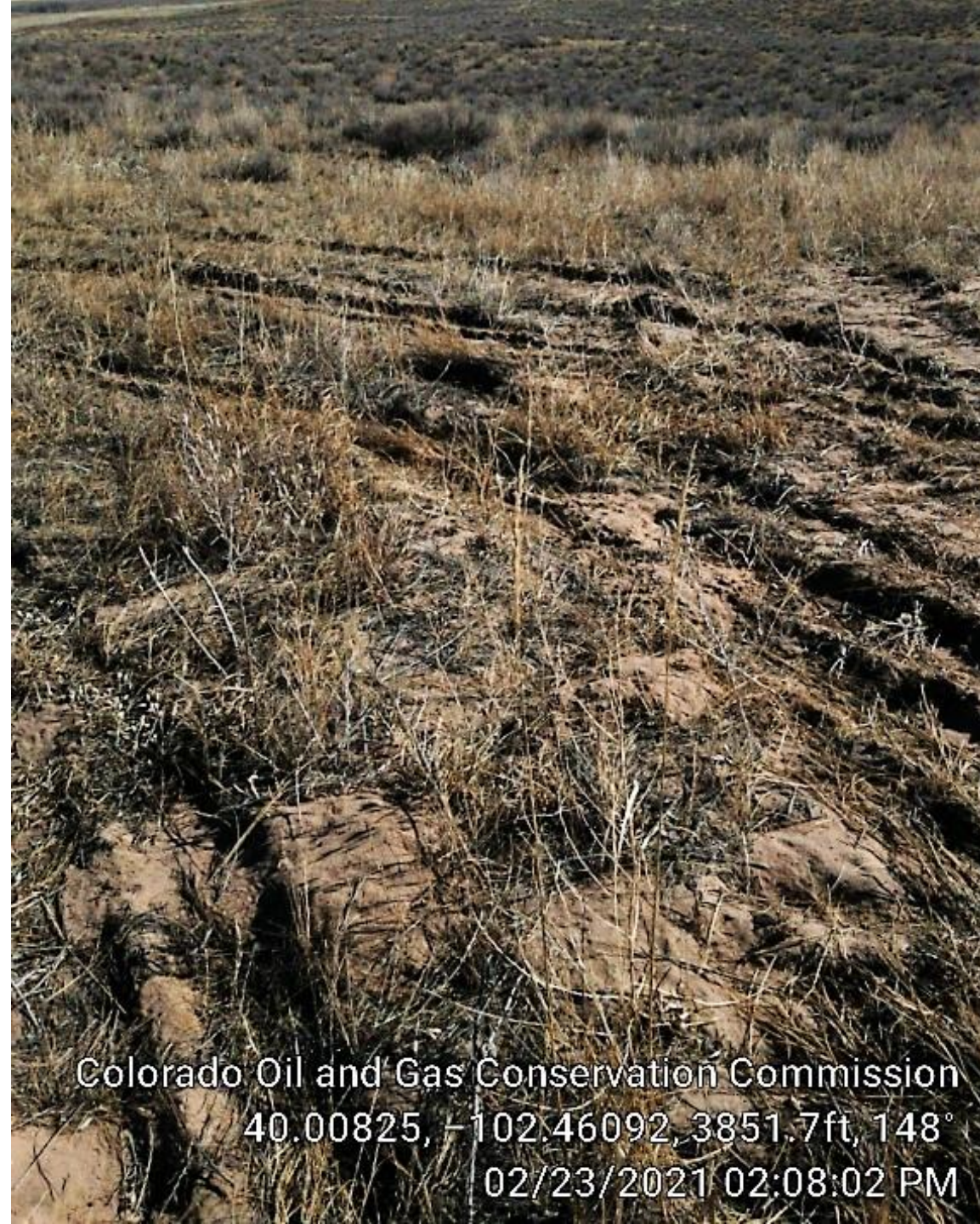
Colorado Oil and Gas Conservation Commission
40.00842, -102.46111, 3855.0ft, 65°
02/23/2021 02:07:20 PM



Colorado Oil and Gas Conservation Commission
40.00822, -102.46097, 3855.0ft, 328
02/23/2021 02:08:13 PM



Colorado Oil and Gas Conservation Commission
40.00834, -102.46094, 3851.7ft, 101°
02/23/2021 02:07:47 PM



Colorado Oil and Gas Conservation Commission
40.00825, -102.46092, 3851.7ft, 148°
02/23/2021 02:08:02 PM



Colorado Oil and Gas Conservation Commission
40.00843, -102.46111, 3855.0ft, 181°
02/23/2021 02:07:27 PM