

OWN Resources Operating LLC, State 36-14
125-11291

Inspection #688309789

2/23/2021

PA Inspection

OWN RESOURCES OPERATING

STATE 36-11
NESW/4 SEC. 36-T1N-R46W
API #05-125-11290-00
YUMA COUNTY, CO
PH. 970-332-3585 or 911

OWN RESOURCES OPERATING

STATE 36-12
NWSW/4 SEC. 36-T1N-R46W
API #05-125-11292-00
YUMA COUNTY, CO
PH. 970-332-3585 or 911

OWN RESOURCES OPERATING

STATE 36-13
SWSW/4 SEC. 36-T1N-R46W
API #05-125-11289-00
YUMA COUNTY, CO
PH. 970-332-3585 or 911

OWN RESOURCES OPERATING

STATE 36-14
SESW/4 SEC. 36-T1N-R46W
API #05-125-11291-00
YUMA COUNTY, CO
PH. 970-332-3585 or 911

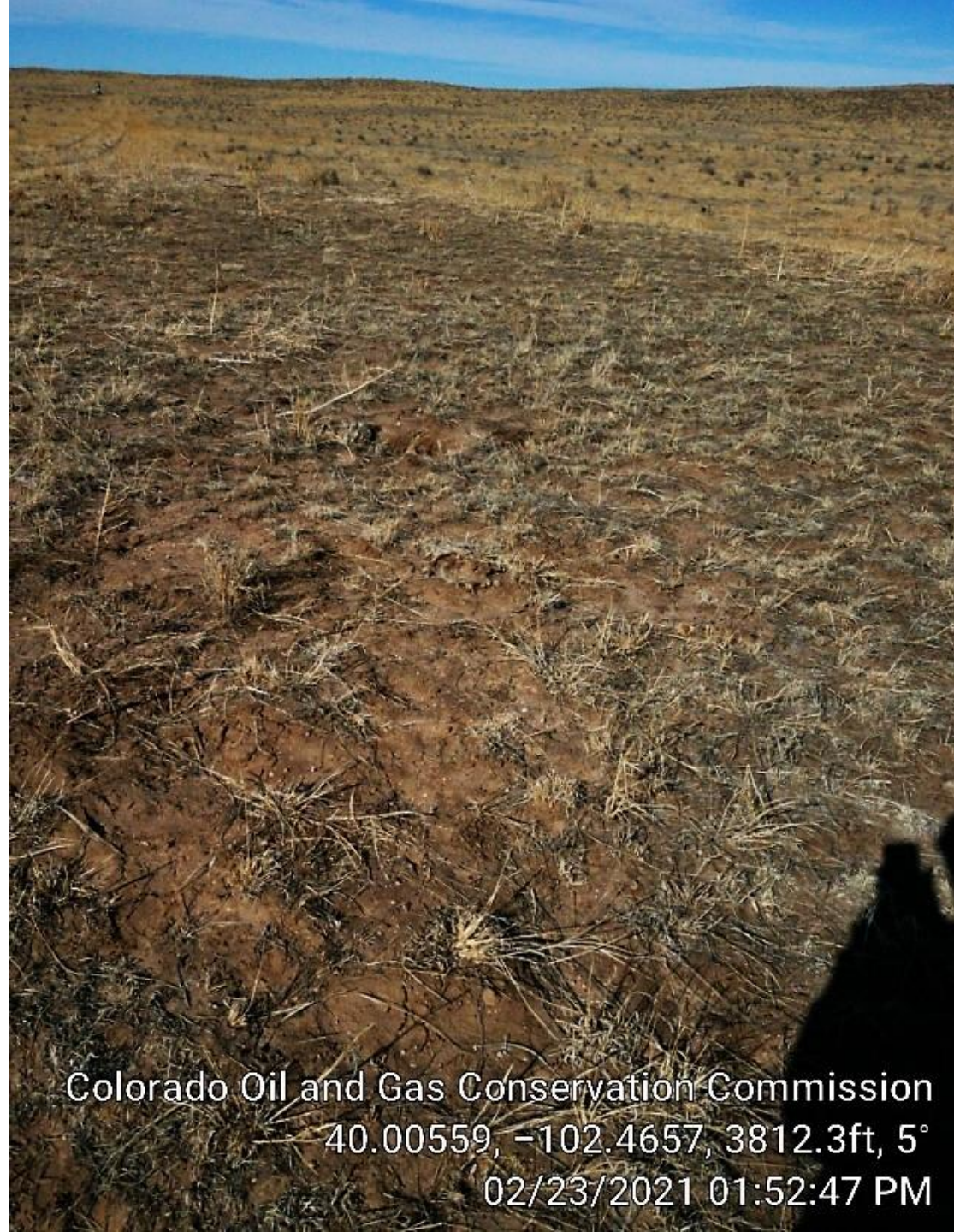
Colorado Oil and Gas Conservation Commission
40.00299, -102.46763, 3812.3ft, 318°
02/23/2021 01:36:25 PM



Colorado Oil and Gas Conservation Commission

40.07968, -102.22418, 24°

02/23/2021 01:52:42 PM




Colorado Oil and Gas Conservation Commission
40.00559, -102.4657, 3812.3ft, 5°
02/23/2021 01:52:47 PM



Colorado Oil and Gas Conservation Commission
40:00563, -102.46571, 3809.1ft, 184°
02/23/2021 01:52:55 PM



Colorado Oil and Gas Conservation Commission
40.00562, -102.46571, 3805.8ft, 127°
02/23/2021 01:52:57 PM



Colorado Oil and Gas Conservation Commission
40.00557, -102.46569, 3812/3ft, 195
02/23/2021 01:53:04 PM