



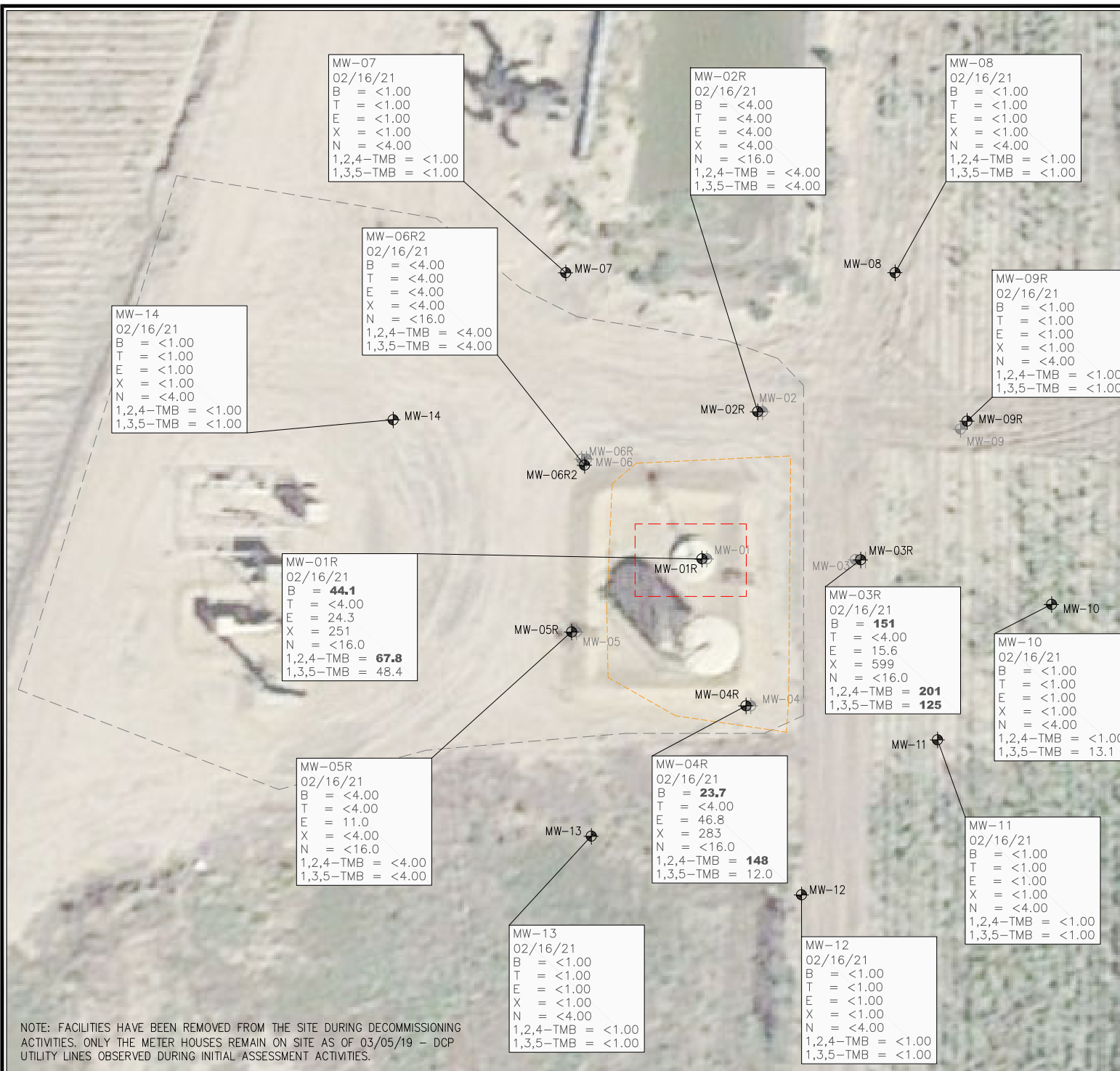
FIGURES

Figure 1: Groundwater Analytical Map (02/16/21)

Figure 2: Inorganic Groundwater Parameters Map

Figure 3: Groundwater Elevation Map (02/16/21)

Figure 4: Remedial Well Location Map



LEGEND

- APPROXIMATE TANK BATTERY BOUNDARY
- - - INITIAL EXCAVATION BOUNDARIES
- - - APPROXIMATE EXCAVATION BOUNDARIES
- ⊕ APPROXIMATE MONITORING WELL LOCATIONS
- ⊕ DESTROYED (DES) MONITORING WELL LOCATIONS

PARAMETERS

GROUNDWATER SAMPLE LOCATION

DATE

B = BENZENE (µg/L)
T = TOLUENE (µg/L)
E = ETHYLBENZENE (µg/L)
X = TOTAL XYLENES (µg/L)
N = NAPHTHALENE (µg/L)
1,2,4-TMB = 1,2,4-TRIMETHYLBENZENE (µg/L)
1,3,5-TMB = 1,3,5-TRIMETHYLBENZENE (µg/L)

µg/L = MILLIGRAMS PER LITER

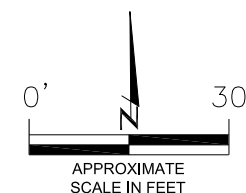
NOTES:

VALUES PRESENTED WITH A LESS THAN SYMBOL (<) DID NOT CONTAIN CONCENTRATIONS AT OR ABOVE THE LABORATORY REPORTING LIMIT

VALUES PRESENTED IN **BOLD** EXCEED THE COGCC TABLE 915-1 REGULATORY LIMITS FOR THAT COMPOUND

COGCC = COLORADO OIL AND GAS CONSERVATION COMMISSION

(NOP) - NOT ON MONITORING PLAN



GROUNDWATER ANALYTICAL MAP

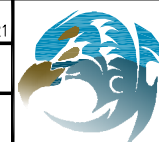
(02/16/21)

AGRICULTURAL PRODUCTS FEDERAL #32-17
HISTORICAL RELEASE
40.2695761 / -104.797120
SW1/4 NE1/4 SEC.32 T4N R66W 6PM
WELD COUNTY, COLORADO
REMEDIATION # 12471

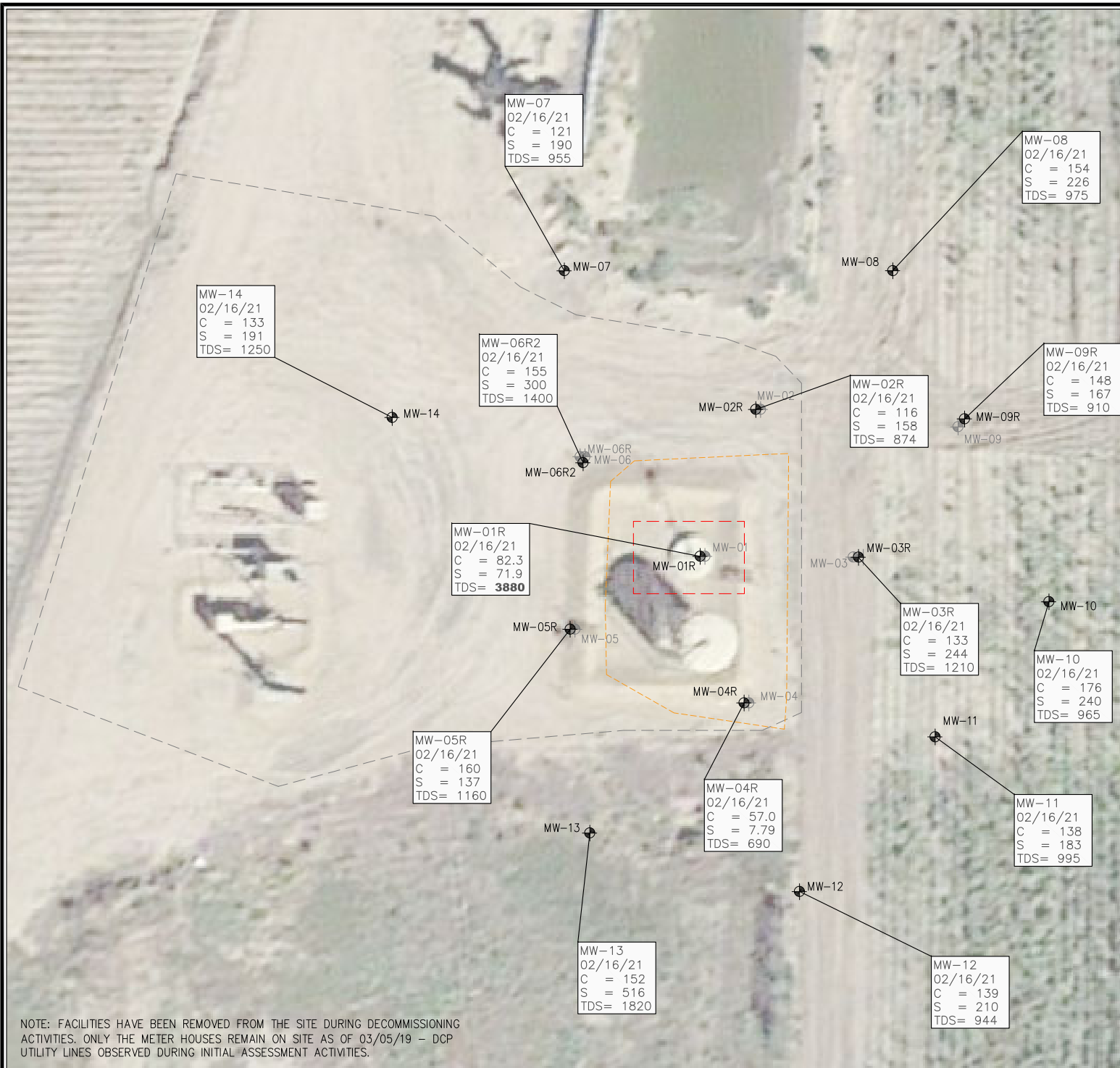
DATE:
03/08/21

DRAWN BY:
AMN

FIG.
NO. 1



EAGLE
ENVIRONMENTAL
CONSULTING, INC.
8000 W 44th Ave, Wheat Ridge, CO 80033
Ph: 303-433-0479 • F: 303-325-5449



NOTE: FACILITIES HAVE BEEN REMOVED FROM THE SITE DURING DECOMMISSIONING ACTIVITIES. ONLY THE METER HOUSES REMAIN ON SITE AS OF 03/05/19 – DCP UTILITY LINES OBSERVED DURING INITIAL ASSESSMENT ACTIVITIES.

LEGEND

- APPROXIMATE TANK BATTERY BOUNDARY
- - - INITIAL EXCAVATION BOUNDARIES
- - - APPROXIMATE EXCAVATION BOUNDARIES
- ⊕ APPROXIMATE MONITORING WELL LOCATIONS
- ⊕ DESTROYED (DES) MONITORING WELL LOCATIONS

PARAMETERS

SAMPLE LOCATION

DATE

C = CHLORIDE (mg/L)

S = SULFATE (mg/L)

TDS = TOTAL DISSOLVED SOLIDS (mg/L)

mg/L = MICROGRAMS PER LITER

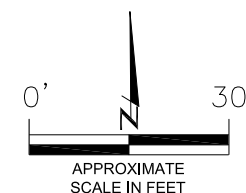
NOTE:

INORGANIC GROUNDWATER SAMPLES WERE COLLECTED 02/16/21.

THE GROUNDWATER INORGANIC PARAMETERS IN MW-10 AND MW-13 WERE USED IN THE DETERMINATION OF LOCAL BACKGROUND LEVELS AT THE SITE.

VALUES PRESENTED IN **BOLD** EXCEED THE COGCC TABLE 915-1 REGULATORY LIMITS FOR THAT COMPOUND

(NOP) – NOT ON MONITORING PLAN

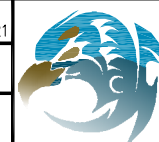


INORGANIC GROUNDWATER PARAMETERS MAP
AGRICULTURAL PRODUCTS FEDERAL #32-17
HISTORICAL RELEASE
40.2695761 / -104.797120
SW1/4 NE1/4 SEC.32 T4N R66W 6PM
WELD COUNTY, COLORADO
REMEDATION # 12471

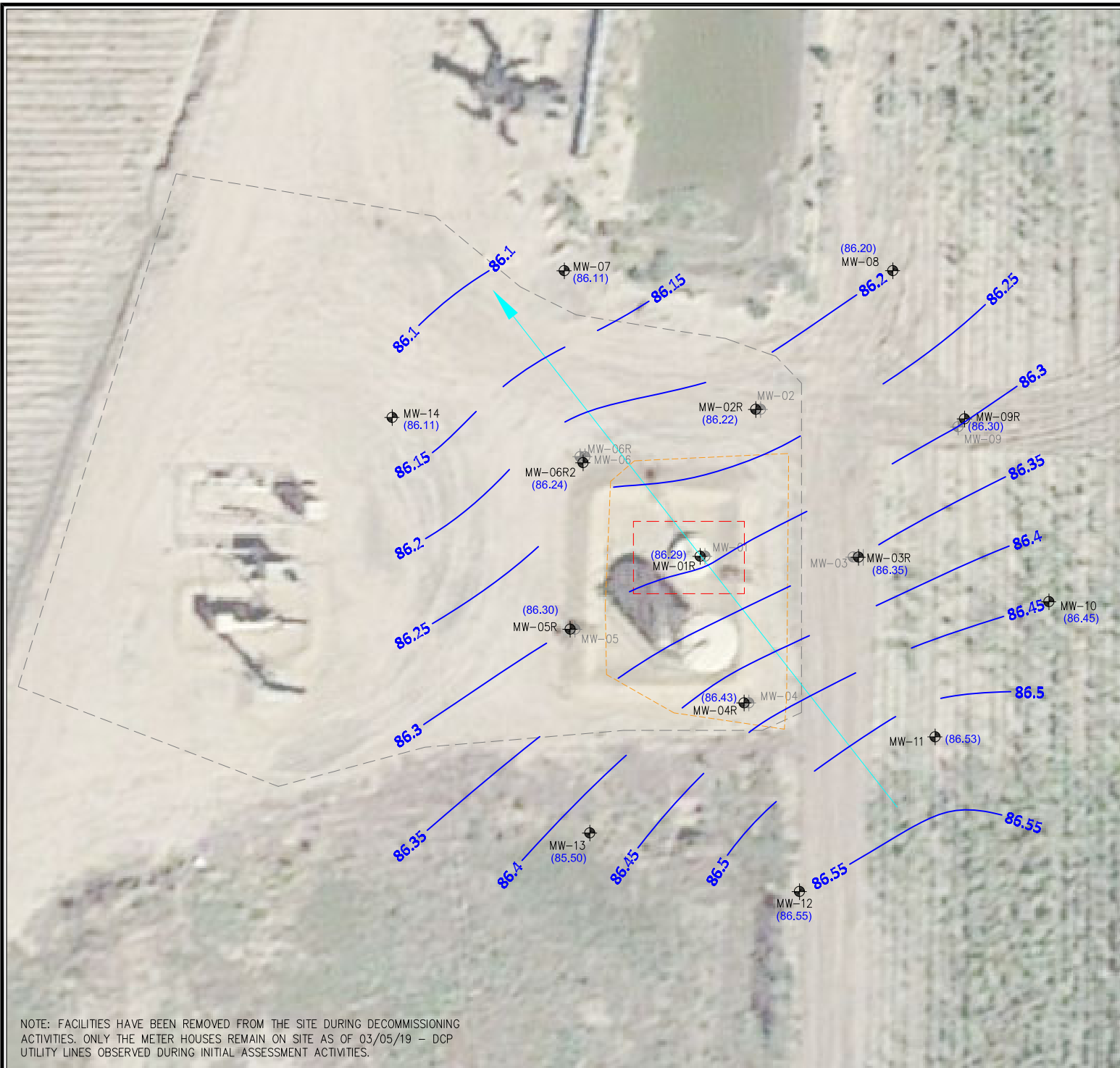
DATE:
03/08/21

DRAWN BY:
AMN

FIG.
NO. 2



EAGLE
ENVIRONMENTAL
CONSULTING, INC.
8000 W 44th Ave, Wheat Ridge, CO 80033
Ph: 303-433-0479 • F: 303-325-5449



LEGEND

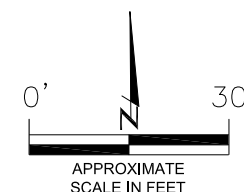
- APPROXIMATE TANK BATTERY BOUNDARY
- INITIAL EXCAVATION BOUNDARIES
- APPROXIMATE EXCAVATION BOUNDARIES
- ⊕ APPROXIMATE MONITORING WELL LOCATIONS
- ⊕ DESTROYED (DES) MONITORING WELL LOCATIONS
- (87.31) RELATIVE GROUNDWATER ELEVATION (FT.)
- INFERRED GROUNDWATER ELEVATION CONTOUR (FT.)
- APPROXIMATE GROUNDWATER FLOW DIRECTION

FT. = FEET

NOTE:

GROUNDWATER ELEVATION DATA WAS COLLECTED FROM ALL MONITORING WELLS ON 02/16/21.

GROUNDWATER ELEVATION DATA COLLECTED FROM MONITORING WELLS MW-13 WAS NOT USED IN THE CONSTRUCTION OF INFERRED GROUNDWATER ELEVATION CONTOURS.



GROUNDWATER ELEVATION MAP

(02/16/21)

AGRICULTURAL PRODUCTS FEDERAL #32-17
HISTORICAL RELEASE
40.269576 / -104.797120
SW1/4 NE1/4 SEC.32 T4N R66W 6PM
WELD COUNTY, COLORADO
REMEDATION # 12471

DATE:
03/08/21

DRAWN BY:
AMN

FIG.
NO. 3



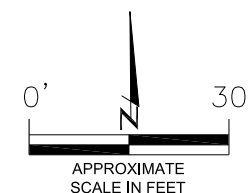
EAGLE
ENVIRONMENTAL
CONSULTING, INC.
8000 W 44th Ave, Wheat Ridge, CO 80033
Ph: 303-433-0479 • F: 303-325-5449

NOTE: FACILITIES HAVE BEEN REMOVED FROM THE SITE DURING DECOMMISSIONING ACTIVITIES. ONLY THE METER HOUSES REMAIN ON SITE AS OF 03/05/19 - DCP UTILITY LINES OBSERVED DURING INITIAL ASSESSMENT ACTIVITIES.



LEGEND

- APPROXIMATE TANK BATTERY BOUNDARY
- INITIAL EXCAVATION BOUNDARIES
- APPROXIMATE EXCAVATION BOUNDARIES
- ⊕ APPROXIMATE MONITORING WELL LOCATIONS
- ⊕ DESTROYED (DES) MONITORING WELL LOCATIONS
- APPROXIMATE AIR SPARGE WELL LOCATIONS
- APPROXIMATE SOIL VAPOR EXTRACTION WELL LOCATIONS

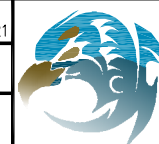


REMEDIAL WELL LOCATION MAP
 AGRICULTURAL PRODUCTS FEDERAL #32-17
 HISTORICAL RELEASE
 40.2695761 / -104.797120
 SW1/4 NE1/4 SEC.32 T4N R66W 6PM
 WELD COUNTY, COLORADO
 REMEDIATION # 12471

DATE:
03/08/21

DRAWN BY:
AMN

FIG.
NO. 4



EAGLE
 ENVIRONMENTAL
 CONSULTING, INC.
 8000 W 44th Ave, Wheat Ridge, CO 80033
 Ph: 303-433-0479 • F: 303-325-5449

NOTE: FACILITIES HAVE BEEN REMOVED FROM THE SITE DURING DECOMMISSIONING ACTIVITIES. ONLY THE METER HOUSES REMAIN ON SITE AS OF 03/05/19 – DCP UTILITY LINES OBSERVED DURING INITIAL ASSESSMENT ACTIVITIES.



TABLES

Table 1: Groundwater Analytical Results Summary

Table 2: Inorganic Groundwater Parameters Summary

Table 3: Groundwater Elevation Summary

Table 4: Air Sparge / Soil Vapor Extraction Mobile Event Summary

TABLE 1
GROUNDWATER ANALYTICAL RESULTS SUMMARY
AGRICULTURAL PRODUCTS FEDERAL #32-17
HISTORICAL RELEASE
40.269576 / -104.797120
SW¼ NE¼ SEC.32 T4N R66W 6PM
WELD COUNTY, COLORADO
REMEDIATION # 12471

Sample Location (Latitude/Longitude)	Date	Benzene (µg/L)	Toluene (µg/L)	Ethylbenzene (µg/L)	Total Xylenes (µg/L)	Napthalene (µg/L)	1,2,4-TMB (µg/L)	1,3,5-TMB (µg/L)
COGCC Table 910-1 Regulatory Limits (µg/L)		5	560	700	1,400	140	67	67
GW-01 (40.269576 / -104.797125)	02/21/19	8250	<4.00	898	8890	NA	NA	NA
MW-01 (40.269582 / -104.797111)	04/09/19	255	<1.00	99.3	1390	NA	NA	NA
	06/24/19	DES						
MW-01R (40.269582 / -104.797111)	11/13/19	1340	<4.00	564	319	NA	NA	NA
	02/12/20	504	<50.0	114	2650	NA	NA	NA
	05/06/20	132	<1.00	44.8	572	NA	NA	NA
	11/25/20	740	<1.00	278	5920	NA	NA	NA
	02/16/21	44.1	<4.00	24.3	251	<16.0	67.8	48.4
MW-02 (40.269667 / -104.797065)	04/09/19	475	<1.00	116	482	NA	NA	NA
	06/24/19	DES						
MW-02R (40.269667 / -104.797065)	11/13/19	46.8	<4.00	4.60	24.8	NA	NA	NA
	02/12/20	19.6	<4.00	<4.00	<4.00	NA	NA	NA
	05/06/20	1.59	<1.00	<1.00	<1.00	NA	NA	NA
	11/25/20	<1.00	<1.00	<1.00	<1.00	NA	NA	NA
	02/16/21	<4.00	<4.00	<4.00	<4.00	<16.0	<4.00	<4.00
MW-03 (40.269580 / -104.796995)	04/09/19	438	<1.00	175	2740	NA	NA	NA
	06/24/19	DES						
MW-03R (40.269580 / -104.796995)	11/13/19	19.0	<4.00	<4.00	627	NA	NA	NA
	02/12/20	254	<4.00	197	1080	NA	NA	NA
	05/06/20	73.8	<1.00	21.8	267	NA	NA	NA
	11/25/20	581	<4.00	38.0	524	NA	NA	NA
	02/16/21	151	<4.00	15.6	599	<16.0	201	125
MW-04 (40.269496 / -104.797073)	04/09/19	1990	<1.00	480	2720	NA	NA	NA
	06/24/19	DES						
MW-04R (40.269496 / -104.797073)	11/13/19	22.2	<4.00	<4.00	961	NA	NA	NA
	02/12/20	31.6	<4.00	286	1210	NA	NA	NA
	05/06/20	34.0	<1.00	246	1340	NA	NA	NA
	11/25/20	24.0	<4.00	49.4	308	NA	NA	NA
	02/16/21	23.7	<4.00	46.8	283	<16.0	148	12.0
MW-05 (40.269534 / -104.797222)	04/09/19	<4.00	<4.00	76.6	583	NA	NA	NA
	06/24/19	DES						
MW-05R (40.269534 / -104.797222)	11/13/19	<4.00	<4.00	<4.00	381	NA	NA	NA
	02/12/20	<4.00	<4.00	<4.00	14.5	NA	NA	NA
	05/06/20	<1.00	<1.00	17.8	114	NA	NA	NA
	11/25/20	<1.00	<1.00	10.1	4.62	NA	NA	NA
	02/16/21	<4.00	<4.00	11.0	<4.00	<16.0	<4.00	<4.00
MW-06 (40.269640 / -104.797210)	04/09/19	<1.00	<1.00	69.9	1650	NA	NA	NA
	06/24/19	DES						
MW-06R (40.269640 / -104.797210)	11/13/19	DES						

TABLE 1
GROUNDWATER ANALYTICAL RESULTS SUMMARY
AGRICULTURAL PRODUCTS FEDERAL #32-17
HISTORICAL RELEASE
40.269576 / -104.797120
SW¼ NE¼ SEC.32 T4N R66W 6PM
WELD COUNTY, COLORADO
REMEDIATION # 12471

Sample Location (Latitude/Longitude)	Date	Benzene (µg/L)	Toluene (µg/L)	Ethylbenzene (µg/L)	Total Xylenes (µg/L)	Napthalene (µg/L)	1,2,4-TMB (µg/L)	1,3,5-TMB (µg/L)
COGCC Table 910-1 Regulatory Limits (µg/L)		5	560	700	1,400	140	67	67
MW-06R2 (40.269640 / -104.797210)	02/12/20	2.05	<1.00	116	1950	NA	NA	NA
	05/06/20	<1.00	<1.00	<1.00	<1.00	NA	NA	NA
	11/25/20	<1.00	<1.00	<1.00	<1.00	NA	NA	NA
	02/16/21	<4.00	<4.00	<4.00	<4.00	<16.0	<4.00	<4.00
MW-07 (40.267725 / -104.797232)	02/12/20	<1.00	<1.00	<1.00	<1.00	NA	NA	NA
	05/06/20	<1.00	<1.00	<1.00	<1.00	NA	NA	NA
	11/25/20	<1.00	<1.00	<1.00	<1.00	NA	NA	NA
	02/16/21	<1.00	<1.00	<1.00	<1.00	<4.00	<1.00	<1.00
MW-08 (40.269726 / -104.796981)	02/12/20	<1.00	<1.00	<1.00	<1.00	NA	NA	NA
	05/06/20	<1.00	<1.00	<1.00	<1.00	NA	NA	NA
	11/25/20	<1.00	<1.00	<1.00	<1.00	NA	NA	NA
	02/16/21	<1.00	<1.00	<1.00	<1.00	<4.00	<1.00	<1.00
MW-09 (40.269643 / -104.796927)	02/12/20	<1.00	<1.00	16.4	119	NA	NA	NA
	05/06/20	<1.00	<1.00	2.84	32.5	NA	NA	NA
DES								
MW-09R (40.269643 / -104.796927)	11/25/20	<1.00	<1.00	<1.00	<1.00	NA	NA	NA
	02/16/21	<1.00	<1.00	<1.00	<1.00	<4.00	<1.00	<1.00
MW-10 (40.269535 / -104.796859)	02/12/20	<1.00	<1.00	<1.00	3.53	NA	NA	NA
	05/06/20	<1.00	<1.00	<1.00	3.53	NA	NA	NA
	11/25/20	<1.00	<1.00	<1.00	<1.00	NA	NA	NA
	02/16/21	<1.00	<1.00	<1.00	<1.00	<4.00	<1.00	13.1
MW-11 (40.269466 / -104.796932)	02/12/20	<1.00	<1.00	<1.00	<1.00	NA	NA	NA
	05/06/20	<1.00	<1.00	<1.00	<1.00	NA	NA	NA
	11/25/20	<1.00	<1.00	<1.00	<1.00	NA	NA	NA
	02/16/21	<1.00	<1.00	<1.00	<1.00	<4.00	<1.00	<1.00
MW-12 (40.269383 / -104.797047)	02/12/20	<1.00	<1.00	<1.00	<1.00	NA	NA	NA
	05/06/20	<1.00	<1.00	<1.00	<1.00	NA	NA	NA
	11/25/20	<1.00	<1.00	<1.00	<1.00	NA	NA	NA
	02/16/21	<1.00	<1.00	<1.00	<1.00	<4.00	<1.00	<1.00
MW-13 (40.269415 / -104.797204)	02/12/20	<1.00	<1.00	<1.00	<1.00	NA	NA	NA
	05/06/20	<1.00	<1.00	<1.00	<1.00	NA	NA	NA
	11/25/20	<1.00	<1.00	<1.00	<1.00	NA	NA	NA
	02/16/21	<1.00	<1.00	<1.00	<1.00	<4.00	<1.00	<1.00
MW-14 (40.269640 / -104.797361)	03/04/20	<1.00	<1.00	6.99	13.6	NA	NA	NA
	05/06/20	<1.00	<1.00	<1.00	<1.00	NA	NA	NA
	11/25/20	<1.00	<1.00	<1.00	<1.00	NA	NA	NA
	02/16/21	<1.00	<1.00	<1.00	<1.00	<4.00	<1.00	<1.00
COGCC = Colorado Oil and Gas Conservation Commission µg/L - micrograms per liter DES - Destroyed INA - Inaccessible NA - Not Analyzed 1,2,4-TMB = 1,2,4 - Trimethylbenzene 1,3,5-TMB = 1,3,5 - Trimethylbenzene Note: Values presented with a less than symbol (<) indicate concentrations were not observed at or above the laboratory reporting limit. Values presented in bold typeface exceed their respective COGCC - Regulatory Limits (Table 915-1).								

TABLE 2
INORGANIC GROUNDWATER PARAMETERS SUMMARY
AGRICULTURAL PRODUCTS FEDERAL #32-17
HISTORICAL RELEASE
40.269576 / -104.797120
SW¼ NE¼ SEC.32 T4N R66W 6PM
WELD COUNTY, COLORADO
REMEDATION # 12471

Sample Location (Latitude/Longitude)	Date	Chloride (mg/L)	Sulfate (mg/L)	Total Dissolved Solids (mg/L)
COGCC Table 91-1 Regulatory Limits (mg/L)		<1.25xLocal Background (190 to 220)	<1.25xLocal Background (300 to 645)	<1.25xLocal Background (1206.3 to 2275)
MW-01R (40.269582 / -104.797111)	02/16/21	82.3	71.9	3880
MW-02R (40.269667 / -104.797065)	02/16/21	116	158	874
MW-03R (40.269580 / -104.796995)	02/16/21	133	244	1210
MW-04R (40.269496 / -104.797073)	02/16/21	57.0	7.79	690
MW-05R (40.269534 / -104.797222)	02/16/21	160	137	1160
MW-06R2 (40.269640 / -104.797210)	02/16/21	155	300	1400
MW-07 (40.267725 / -104.797232)	02/16/21	121	190	955
MW-08 (40.269726 / -104.796981)	02/16/21	154	226	975
MW-09R (40.269643 / -104.796927)	02/16/21	148	167	910
MW-10 (40.269535 / -104.796859)	02/16/21	176	240	965

TABLE 2
 INORGANIC GROUNDWATER PARAMETERS SUMMARY
 AGRICULTURAL PRODUCTS FEDERAL #32-17
 HISTORICAL RELEASE
 40.269576 / -104.797120
 SW¼ NE¼ SEC.32 T4N R66W 6PM
 WELD COUNTY, COLORADO
 REMEDIATION # 12471

Sample Location (Latitude/Longitude)	Date	Chloride (mg/L)	Sulfate (mg/L)	Total Dissolved Solids (mg/L)
COGCC Table 91-1 Regulatory Limits (mg/L)		<1.25xLocal Background (190 to 220)	<1.25xLocal Background (300 to 645)	<1.25xLocal Background (1206.3 to 2275)
MW-11 (40.269466 / -104.796932)	02/16/21	138	183	995
MW-12 (40.269383 / -104.797047)	02/16/21	139	210	944
MW-13 (40.269415 / -104.797204)	02/16/21	152	516	1820
MW-14 (40.269640 / -104.797361)	02/16/21	133	191	1250
COGCC - Colorado Oil and Gas Conservation Commission mg/L - milligrams per liter Note: The Groundwater Inorganic Parameters in monitoring wells MW-10 and MW-13 were used in the determination of "local background" levels at the site. Local "regulatory limit" (1.25*local background) Values presented in bold typeface exceed their respective COGCC - Regulatory Limits (Table 915-1).				

TABLE 3
GROUNDWATER ELEVATION SUMMARY
AGRICULTURAL PRODUCTS FEDERAL #32-17
HISTORICAL RELEASE
40.269576 / -104.797120
SW¼ NE¼ SEC.32 T4N R66W 6PM
WELD COUNTY, COLORADO
REMEDATION # 12471

Sample Location (Latitude/Longitude)	Date	Top of Casing Elevation (feet)	Depth to Groundwater from TOC (feet)	Relative Groundwater Elevation (feet) (TOC)	Depth to Groundwater (feet)(bgs)	Stick Up Height (feet)
MW-01 (40.269582 / -104.797111)	04/09/19	99.54	11.28	88.26	8.79	2.49
	06/24/19	DES				
MW-01R (40.269582 / -104.797111)	11/13/19	99.88	10.73	89.15	7.52	3.21
	02/12/20		12.45	87.43	9.24	
	05/06/20		11.86	88.02	8.65	
	11/25/20		11.60	88.28	8.39	
	02/16/21		13.59	86.29	10.38	
MW-02 (40.269667 / -104.797065)	04/09/19	99.72	11.60	88.12	8.90	2.70
	06/24/19	DES				
MW-02R (40.269667 / -104.797065)	11/13/19	99.71	10.64	89.07	7.39	3.25
	02/12/20		12.30	87.41	9.05	
	05/06/20		11.64	88.07	8.39	
	11/25/20		11.50	88.21	8.25	
	02/16/21		13.49	86.22	10.24	
MW-03 (40.269580 / -104.796995)	04/09/19	98.90	10.61	88.29	8.55	2.06
	06/24/19	DES				
MW-03R (40.269580 / -104.796995)	11/13/19	99.42	10.24	89.18	7.01	3.23
	02/12/20		11.89	87.53	8.66	
	05/06/20		11.20	88.22	7.97	
	11/25/20		11.10	88.32	7.87	
	02/16/21		13.07	86.35	9.84	
MW-04 (40.269496 / -104.797073)	04/09/19	100.00	11.53	88.47	8.90	2.63
	06/24/19	DES				
MW-04R (40.269496 / -104.797073)	11/13/19	99.58	10.29	89.29	7.18	3.11
	02/12/20		11.96	87.62	8.85	
	05/06/20		11.30	88.28	8.19	
	11/25/20		11.18	88.40	8.07	
	02/16/21		13.15	86.43	10.04	
MW-05 (40.269534 / -104.797222)	04/09/19	99.67	11.41	88.26	8.89	2.52
	06/24/19	DES				
MW-05R (40.269534 / -104.797222)	11/13/19	100.00	10.82	89.18	7.57	3.25
	02/12/20		12.52	87.48	9.27	
	05/06/20		11.90	88.10	8.65	
	11/25/20		11.73	88.27	8.48	
	02/16/21		13.70	86.30	10.45	
MW-06 (40.269640 / -104.797210)	04/09/19	99.57	11.44	88.13	8.95	2.49
	06/24/19	DES				
MW-06R (40.269640 / -104.797210)	11/13/19	99.95	DES			
MW-06R2 (40.269640 / -104.797210)	02/12/20	96.60	9.15	87.45	9.15	NA
	05/06/20		8.52	88.08	8.52	
	11/25/20		8.36	88.24	8.36	
	02/16/21		10.36	86.24	10.36	

TABLE 3
GROUNDWATER ELEVATION SUMMARY
AGRICULTURAL PRODUCTS FEDERAL #32-17
HISTORICAL RELEASE
40.269576 / -104.797120
SW¼ NE¼ SEC.32 T4N R66W 6PM
WELD COUNTY, COLORADO
REMEDATION # 12471

Sample Location (Latitude/Longitude)	Date	Top of Casing Elevation (feet)	Depth to Groundwater from TOC (feet)	Relative Groundwater Elevation (feet) (TOC)	Depth to Groundwater (feet)(bgs)	Stick Up Height (feet)
MW-07 (40.267725 / -104.797232)	02/12/20	95.84	9.56	86.28	9.56	NA
	05/06/20		7.89	87.95	7.89	
	11/25/20		7.72	88.12	7.72	
	02/16/21		9.73	86.11	9.73	
MW-08 (40.269726 / -104.796981)	02/12/20	95.61	8.19	87.42	8.19	NA
	05/06/20		7.51	88.10	7.51	
	11/25/20		7.41	88.20	7.41	
	02/16/21		9.41	86.20	9.41	
MW-09 (40.269643 / -104.796927)	02/12/20	95.82	8.32	87.50	8.32	NA
	05/06/20		7.59	88.23	7.59	
			DES			
MW-09R (40.269643 / -104.796927)	11/25/20	95.90	7.62	88.28	7.62	NA
	02/16/21		9.60	86.30	9.60	
MW-10 (40.269535 / -104.796859)	02/12/20	95.64	7.98	87.66	7.98	NA
	05/06/20		7.24	88.40	7.24	
	11/25/20		7.23	88.41	7.23	
	02/16/21		9.19	86.45	9.19	
MW-11 (40.269466 / -104.796932)	02/12/20	95.54	7.81	87.73	7.81	NA
	05/06/20		7.12	88.42	7.12	
	11/25/20		7.03	88.51	7.03	
	02/16/21		9.01	86.53	9.01	
MW-12 (40.269383 / -104.797047)	02/12/20	96.09	8.32	87.77	8.32	NA
	05/06/20		7.65	88.44	7.65	
	11/25/20		7.57	88.52	7.57	
	02/16/21		9.54	86.55	9.54	
MW-13 (40.269415 / -104.797204)	02/12/20	95.07	8.35	86.72	8.35	NA
	05/06/20		7.74	87.33	7.74	
	11/25/20		7.59	87.48	7.59	
	02/16/21		9.57	85.50	9.57	
MW-14 (40.269640 / -104.797361)	03/04/20	96.60	9.79	86.81	9.79	NA
	05/06/20		8.69	87.91	10.79	
	11/25/20		8.49	88.11	8.49	
	02/16/21		10.49	86.11	10.49	
COGCC = Colorado Oil and Gas Conservation Commission bgs- below ground surface NA - not applicable TOC - Top of Casing DES - Destroyed						

TABLE 4
AIR SPARGE/SOIL VAPOR EXTRACTION MOBILE EVENT SUMMARY
AGRICULTURAL PRODUCTS FEDERAL #32-17
HISTORICAL RELEASE
40.269576 / -104.797120
SW¼ NE¼ SEC.32 T4N R66W 6PM
WELD COUNTY, COLORADO
REMEDIATION # 12471

Date	Operation Time (Hours)
01/06/21	8
01/11/21	7.5
01/26/21	7.5
03/01/21	7.5
Notes: Mobile Air Sparge (AS) and Soil Vapor Extraction (SVE) events began at the site in January 2021.	

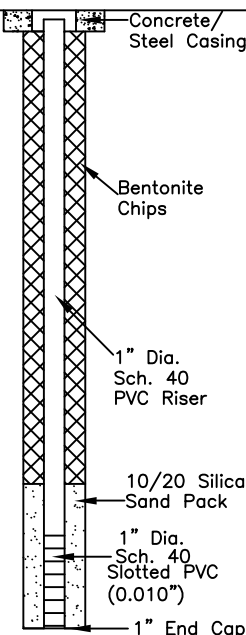


ATTACHMENT A

Boring Log/Well Construction Diagrams AS-01 through AS-03 and SVE-01 through SVE-03

Boring Log/Well Completion Diagram: AS-01

PAGE 1 OF 1

DEPTH (FT)	LITHOLOGY	SAMPLE				OVM/OVA (PPM)	BLOW COUNT (per 0.5 FT)	DEPTH (FT)	WELL CONSTRUCTION DETAIL	COMMENTS
	DESCRIPTION	GRAPHIC LOG	TYPE	NUMBER	RECOVERY %					
0	(0-8') Excavation Backfill - sandy CLAY - N/O, N/S	FL	DP	1	60	8.7	N/A			
						8.8				
5	@7.5' - wet	CL	DP	2	80	11.9	N/A			
	(8-12') sandy CLAY - brown, wet, soft to medium stiff, medium plasticity, poorly graded with ~20-30% fine grained sand					328.1				
10	@8-11' - weathered gray staining, moderately strong HC odor	SC	DP	3	100	129.9	N/A			
	(12-15') clayey SAND - light brown, wet, medium dense, fine to medium grained, moderately graded with ~30% clay, N/O, N/S					17.0				
15	BoB @ 15'									
20									<p>DP - Direct push HC - Hydrocarbon BoB - Bottom of Boring N/O - no odor N/S - no staining TOC - top of casing bgs - below ground surface</p>	
25										
30										

START/COMPLETION DATE: 12/23/21

SAND PACK INTERVAL (FEET): 11.5-15

PROJECT: AGRICULTURAL PRODUCTS FEDERAL #32-17

BENTONITE/GROUT INTERVAL (FEET): 0.5-11.5

LOGGED BY: G. CONGDON

WELL SCREEN INTERVAL (FEET): 12.5-15

DRILLING COMPANY/EQUIPMENT: EAGLE/GEOPROBE

WELL DIAMETER (INCHES): 1

BORING DEPTH (FEET): 15

WELL DEPTH (FEET): 15

PID INSTRUMENT: MINIRAE 3000 - #13

TIME STARTED/COMPLETED: 1054/1111

SAMPLE COLLECTION DEPTH (FEET)/TIME: N/A

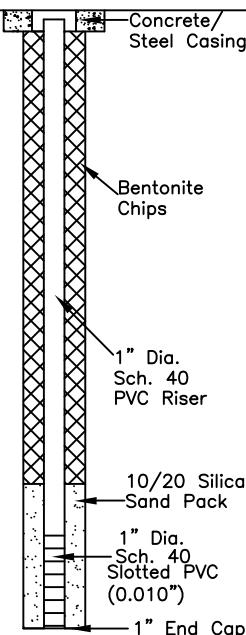


EAGLE
ENVIRONMENTAL
CONSULTING, INC.

8000 West 44th Ave., Wheat Ridge, CO 80033
Ph: 303-433-0479 • F: 303-325-5449

Boring Log/Well Completion Diagram: AS-02

PAGE 1 OF 1

DEPTH (FT)	LITHOLOGY	SAMPLE				OVM/OVA (PPM)	BLOW COUNT (per 0.5 FT)	DEPTH (FT)	WELL CONSTRUCTION DETAIL	COMMENTS
	DESCRIPTION	GRAPHIC LOG	TYPE	NUMBER	RECOVERY %					
0	(0-8') Excavation Backfill - sandy CLAY - N/O, N/S	FL	DP	1	60	5.7	N/A			
						3.9				
5	@7.5' - wet (8-9') sandy CLAY - brown, wet, soft to medium stiff, medium plasticity, poorly graded with ~20-30% fine grained sand	CL	DP	2	90	10.9	N/A	5		
	@8-12' - weathered gray staining, slight HC odor					270.4				
10	(9-12') clayey SAND - light brown, wet, medium dense, fine to medium grained, moderately graded with ~30% clay, N/O, N/S	SC	DP	3	100	69.0	N/A	10		
	(12-15') sandy CLAY - brown, moist to wet, soft to medium stiff, medium plasticity, poorly graded with ~20% fine grained sand, N/O, N/S	CL				16.2				
15	BoB @ 15'							15		
20								20		DP - Direct push HC - Hydrocarbon BoB - Bottom of Boring N/O - no odor N/S - no staining TOC - top of casing bgs - below ground surface
25								25		
30								30		

START/COMPLETION DATE: 12/23/21

SAND PACK INTERVAL (FEET): 11.5-15

PROJECT: AGRICULTURAL PRODUCTS FEDERAL #32-17

BENTONITE/GROUT INTERVAL (FEET): 0.5-11.5

LOGGED BY: G. CONGDON

WELL SCREEN INTERVAL (FEET): 12.5-15

DRILLING COMPANY/EQUIPMENT: EAGLE/GEOPROBE

WELL DIAMETER (INCHES): 1

BORING DEPTH (FEET): 15

WELL DEPTH (FEET): 15

PID INSTRUMENT: MINIRAE 3000 - #13

TIME STARTED/COMPLETED: 1115/1129

SAMPLE COLLECTION DEPTH (FEET)/TIME: N/A

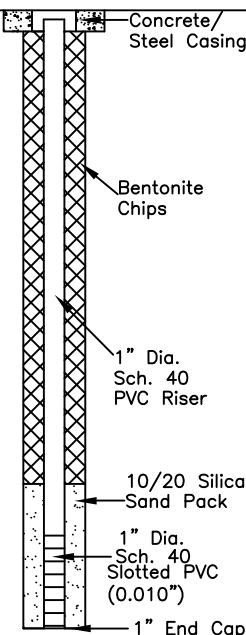


EAGLE
ENVIRONMENTAL
CONSULTING, INC.

8000 West 44th Ave., Wheat Ridge, CO 80033
Ph: 303-433-0479 • F: 303-325-5449

Boring Log/Well Completion Diagram: AS-03

PAGE 1 OF 1

DEPTH (FT)	LITHOLOGY	SAMPLE				OVM/OVA (PPM)	BLOW COUNT (per 0.5 FT)	DEPTH (FT)	WELL CONSTRUCTION DETAIL	COMMENTS
	DESCRIPTION	GRAPHIC LOG	TYPE	NUMBER	RECOVERY %					
0	(0-7') clayey SAND - light brown to brown, dry to moist, medium dense, fine to medium grained, moderately graded with ~20% clay, N/O, N/S	SC	DP	1	70	2.9	N/A			
						4.0				
5	(7-12') sandy CLAY - light brown, moist to wet, soft to medium stiff, medium plasticity, poorly graded with ~20-30% fine grained sand	CL	DP	2	80	4.9	N/A	5		
						491.1				
10	@7-12' - weathered gray staining, slight HC odor @7.5' - wet	SC	DP	3	100	292.8	N/A	10		
						34.2				
15	(12-15') clayey SAND - light brown, wet, medium dense, fine to medium grained, moderately graded with ~40% clay, N/O, N/S							15		
	BoB @ 15'									
20								20		
25								25		
30										

DP - Direct push
HC - Hydrocarbon
BoB - Bottom of Boring
N/O - no odor
N/S - no staining
TOC - top of casing
bgs - below ground surface

START/COMPLETION DATE: 12/23/21

SAND PACK INTERVAL (FEET): 11.5-15

PROJECT: AGRICULTURAL PRODUCTS FEDERAL #32-17

BENTONITE/GROUT INTERVAL (FEET): 0.5-11.5

LOGGED BY: G. CONGDON

WELL SCREEN INTERVAL (FEET): 12.5-15

DRILLING COMPANY/EQUIPMENT: EAGLE/GEOPROBE

WELL DIAMETER (INCHES): 1

BORING DEPTH (FEET): 15

WELL DEPTH (FEET): 15

PID INSTRUMENT: MINIRAE 3000 - #13

TIME STARTED/COMPLETED: 1138/1146

SAMPLE COLLECTION DEPTH (FEET)/TIME: N/A

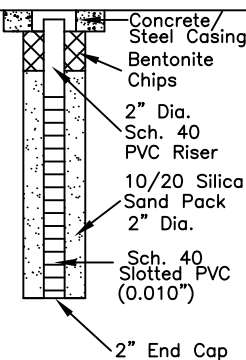


EAGLE
ENVIRONMENTAL
CONSULTING, INC.

8000 West 44th Ave., Wheat Ridge, CO 80033
Ph: 303-433-0479 • F: 303-325-5449

Boring Log/Well Completion Diagram: SVE-01

PAGE 1 OF 1

DEPTH (FT)	LITHOLOGY	SAMPLE				OVM/OVA (PPM)	BLOW COUNT (per 0.5 FT)	DEPTH (FT)	WELL CONSTRUCTION DETAIL	COMMENTS
	DESCRIPTION	GRAPHIC LOG	TYPE	NUMBER	RECOVERY %					
0	(0-7') Excavation Backfill - sandy CLAY - N/O, N/S	FL	DP	1	50	5.2	N/A		 <p>Concrete/Steel Casing Bentonite Chips 2" Dia. Sch. 40 PVC Riser 10/20 Silica Sand Pack 2" Dia. Sch. 40 Slotted PVC (0.010") 2" End Cap</p>	
						6.2				
5			DP	2	80	8.9	N/A			
	BoB @ 7'									
10										
15										
20										
25										
30										

DP - Direct push
HC - Hydrocarbon
BoB - Bottom of Boring
N/O - no odor
N/S - no staining
TOC - top of casing
bgs - below ground surface

START/COMPLETION DATE: 12/23/21

SAND PACK INTERVAL (FEET): 1.5-7

PROJECT: AGRICULTURAL PRODUCTS FEDERAL #32-17

BENTONITE/GROUT INTERVAL (FEET): 0.5-1.5

LOGGED BY: G. CONGDON

WELL SCREEN INTERVAL (FEET): 2-7

DRILLING COMPANY/EQUIPMENT: EAGLE/GEOPROBE

WELL DIAMETER (INCHES): 2

BORING DEPTH (FEET): 7

WELL DEPTH (FEET): 7

PID INSTRUMENT: MINIRAE 3000 - #13

TIME STARTED/COMPLETED: 1036/1050

SAMPLE COLLECTION DEPTH (FEET)/TIME: N/A

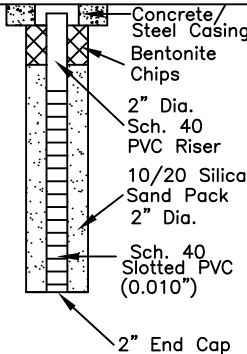


EAGLE
ENVIRONMENTAL
CONSULTING, INC.

8000 West 44th Ave., Wheat Ridge, CO 80033
Ph: 303-433-0479 • F: 303-325-5449

Boring Log/Well Completion Diagram: SVE-02

PAGE 1 OF 1

DEPTH (FT)	LITHOLOGY	SAMPLE				OVM/OVA (PPM)	BLOW COUNT (per 0.5 FT)	DEPTH (FT)	WELL CONSTRUCTION DETAIL	COMMENTS
	DESCRIPTION	GRAPHIC LOG	TYPE	NUMBER	RECOVERY %					
0	(0-7') Excavation Backfill - sandy CLAY - N/O, N/S	FL	DP	1	50	4.9	N/A		 <p>Concrete/Steel Casing Bentonite Chips 2" Dia. Sch. 40 PVC Riser 10/20 Silica Sand Pack 2" Dia. Sch. 40 Slotted PVC (0.010") 2" End Cap</p>	
						5.3				
5			DP	2	80	6.6	N/A	5		
	BoB @ 7'									
10								10		
15								15		
20								20		
25								25		
30										

DP - Direct push
HC - Hydrocarbon
BoB - Bottom of Boring
N/O - no odor
N/S - no staining
TOC - top of casing
bgs - below ground surface

START/COMPLETION DATE: 12/23/21

SAND PACK INTERVAL (FEET): 1.5-7

PROJECT: AGRICULTURAL PRODUCTS FEDERAL #32-17

BENTONITE/GROUT INTERVAL (FEET): 0.5-1.5

LOGGED BY: G. CONGDON

WELL SCREEN INTERVAL (FEET): 2-7

DRILLING COMPANY/EQUIPMENT: EAGLE/GEOPROBE

WELL DIAMETER (INCHES): 2

BORING DEPTH (FEET): 7

WELL DEPTH (FEET): 7

PID INSTRUMENT: MINIRAE 3000 - #13

TIME STARTED/COMPLETED: 1129/1138

SAMPLE COLLECTION DEPTH (FEET)/TIME: N/A

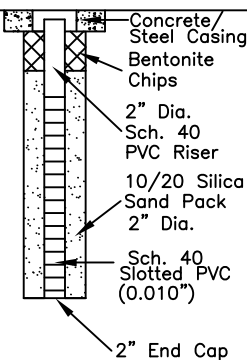


EAGLE
ENVIRONMENTAL
CONSULTING, INC.

8000 West 44th Ave., Wheat Ridge, CO 80033
Ph: 303-433-0479 • F: 303-325-5449

Boring Log/Well Completion Diagram: SVE-03

PAGE 1 OF 1

DEPTH (FT)	LITHOLOGY	SAMPLE				OVM/OVA (PPM)	BLOW COUNT (per 0.5 FT)	DEPTH (FT)	WELL CONSTRUCTION DETAIL	COMMENTS
	DESCRIPTION	GRAPHIC LOG	TYPE	NUMBER	RECOVERY %					
0	(0-7') clayey SAND - light brown to brown, dry to moist, medium dense, fine to medium grained, moderately graded with ~20% clay, N/O, N/S	SC	DP	1	60	2.3	N/A		 <p>Concrete/Steel Casing Bentonite Chips 2" Dia. Sch. 40 PVC Riser 10/20 Silica Sand Pack 2" Dia. Sch. 40 Slotted PVC (0.010") 2" End Cap</p>	
						4.9				
5			DP	2	80	7.3	N/A	5		
	BoB @ 7'									
10								10		
15								15		
20								20		
25								25		
30										

DP - Direct push
HC - Hydrocarbon
BoB - Bottom of Boring
N/O - no odor
N/S - no staining
TOC - top of casing
bgs - below ground surface

START/COMPLETION DATE: 12/23/21

SAND PACK INTERVAL (FEET): 1.5-7

PROJECT: AGRICULTURAL PRODUCTS FEDERAL #32-17

BENTONITE/GROUT INTERVAL (FEET): 0.5-1.5

LOGGED BY: G. CONGDON

WELL SCREEN INTERVAL (FEET): 2-7

DRILLING COMPANY/EQUIPMENT: EAGLE/GEOPROBE

WELL DIAMETER (INCHES): 2

BORING DEPTH (FEET): 7

WELL DEPTH (FEET): 7

PID INSTRUMENT: MINIRAE 3000 - #13

TIME STARTED/COMPLETED: 1148/1158

SAMPLE COLLECTION DEPTH (FEET)/TIME: N/A



EAGLE
ENVIRONMENTAL
CONSULTING, INC.

8000 West 44th Ave., Wheat Ridge, CO 80033
Ph: 303-433-0479 • F: 303-325-5449



ATTACHMENT B

Laboratory Analytical Reports



February 23, 2021

Eagle Environmental Consulting, Inc.

Martin C Eckert III

8000 W 44th Ave

Wheat Ridge CO 80033

**Project Name - Noble - Agricultural Products
Federal #32-17**

Project Number - [none]

Attached are your analytical results for Noble - Agricultural Products Federal #32-17 received by Origins Laboratory, Inc. February 16, 2021. This project is associated with Origins project number Y102293-01.

The analytical results in the following report were analyzed under the guidelines of EPA Methods. These methods are identified as follows; "SW" are defined in SW-846, "EPA" are defined in 40CFR part 136 and "SM" are defined in the most current revision of Standard Methods For the Examination of Water and Wastewater.

The analytical results apply specifically to the samples and analyses specified per the attached Chain of Custody. As such, this report shall not be reproduced except in full, without the written approval of Origin's laboratory.

Unless otherwise noted, the analytical results for all soil samples are reported on a wet weight basis. All analytical analyses were performed under NELAP guidelines unless noted by a data qualifier.

Any holding time exceedances, deviations from the method specifications or deviations from Origins Laboratory's Standard Operating Procedures are outlined in the case narrative.

Thank you for selecting Origins for your analytical needs. Please contact us with any questions concerning this report, or if we can help with anything at all.

Origins Laboratory, Inc.
303.433.1322
o-squad@oelabinc.com



1725 Elk Place, Denver, CO 80211 | Phone: 303.433.1322 | Fax: 303.265.9645

Eagle Environmental Consulting, Inc.

8000 W 44th Ave

Wheat Ridge CO 80033

Martin C Eckert III

Project Number: [none]

Project: Noble - Agricultural Products Federal
#32-17

CROSS REFERENCE REPORT

Sample ID	Laboratory ID	Matrix	Date Sampled	Date Received
MW-01R	Y102293-01	Water	February 16, 2021 14:42	02/16/2021 16:00
MW-02R	Y102293-02	Water	February 16, 2021 14:08	02/16/2021 16:00
MW-03R	Y102293-03	Water	February 16, 2021 14:37	02/16/2021 16:00
MW-04R	Y102293-04	Water	February 16, 2021 14:30	02/16/2021 16:00
MW-05R	Y102293-05	Water	February 16, 2021 14:20	02/16/2021 16:00
MW-06R2	Y102293-06	Water	February 16, 2021 14:52	02/16/2021 16:00
MW-07	Y102293-07	Water	February 16, 2021 12:57	02/16/2021 16:00
MW-08	Y102293-08	Water	February 16, 2021 13:00	02/16/2021 16:00
MW-09R	Y102293-09	Water	February 16, 2021 13:20	02/16/2021 16:00
MW-10	Y102293-10	Water	February 16, 2021 13:33	02/16/2021 16:00
MW-11	Y102293-11	Water	February 16, 2021 13:38	02/16/2021 16:00
MW-12	Y102293-12	Water	February 16, 2021 13:46	02/16/2021 16:00
MW-13	Y102293-13	Water	February 16, 2021 14:05	02/16/2021 16:00
MW-14	Y102293-14	Water	February 16, 2021 12:40	02/16/2021 16:00

Origins Laboratory, Inc.



*The results in this report apply to the samples analyzed in
accordance with the chain of custody document. This
analytical report must be reproduced in its entirety.*

Eagle Environmental Consulting, Inc.

8000 W 44th Ave

Wheat Ridge CO 80033

Martin C Eckert III

Project Number: [none]

Project: Noble - Agricultural Products Federal
#32-17

Origins Laboratory, Inc.



*The results in this report apply to the samples analyzed in
accordance with the chain of custody document. This
analytical report must be reproduced in its entirety.*

Eagle Environmental Consulting, Inc.
8000 W 44th Ave
Wheat Ridge CO 80033

Martin C Eckert III
Project Number: [none]
Project: Noble - Agricultural Products Federal #32-17

www.originslaboratory.com

page 1 of 2

ORIGINS
LABORATORY, INC

Client: Eagle Env. Cons.
Address: 8000 W. 44th Ave
Telephone Number: 303-433-0479
Email Address: mce3@eagle-enviro.com

Project Manager: Martin Eckert III
Project Name: Agricultural Products Federal #32-17
Project Number: -
Samples Collected By: MM/AB

Fax: 303.265.9645

Sample ID Description	Date Sampled	Time Sampled	# of Containers	Preservative				Matrix			Analysis				Sample Instructions		
				Unpreserved	HCl	HNO ₃	Other	Groundwater	Soil	Air Sampling	Other	BTX	THB	PAHs		8240D	
MW-01R	2/16/21	1442	3		X				X								
MW-02R		1408															
MW-03R		1437															
MW-04R		1430															
MW-05R		1420															
MW-06R		1452															
MW-07		1257															
MW-08		1300															
MW-09R		1320															
MW-10		1333															
Relinquished by: <u>Amber</u>	Date: <u>2/16/21</u>	Time: <u>1600</u>	Time: <u>1600</u>	Received by: <u>[Signature]</u>	Date: <u>2/16/21</u>	Time: <u>1600</u>	Time: <u>1600</u>	Received by: <u>[Signature]</u>	Date: <u>2/16/21</u>	Time: <u>1600</u>	Time: <u>1600</u>	Turnaround Time: <input type="checkbox"/> 24 Hr <input type="checkbox"/> 48 Hr <input checked="" type="checkbox"/> 72 Hr	Standard <input checked="" type="checkbox"/>				

★ Noble

Date Results Needed

Temp Received: 2.3

★ Bill to Jan 6

Origins Laboratory, Inc.

Jordan A. Merrill

The results in this report apply to the samples analyzed in accordance with the chain of custody document. This analytical report must be reproduced in its entirety.

Eagle Environmental Consulting, Inc.

8000 W 44th Ave

Wheat Ridge CO 80033

Martin C Eckert III

Project Number: [none]

Project: Noble - Agricultural Products Federal #32-17

Origins Laboratory

Sample Receipt Checklist

F-012207-01-R1
Effective Date: 01/09/12

Origins Work Order: Y102293

Client: Eagle

Client Project ID: Agricultural Products

Checklist Completed by: JG KDK

Shipped Via: HD

(UPS, FedEx, Hand Delivered, Pick-up, etc.)

Date/time completed: 02/17/21

Airbill #: N/A

Matrix(s) Received: (Check all that apply):

Soil/Solid ☒

Water ☐

Other: ☐

Cooler Number/Temperature: 1 / 2.3 °C

/ °C

/ °C

/ °C

/ °C

/ °C

/ °C

(Describe)

Thermometer ID: T003

Requirement Description	Yes	No	N/A	Comments (if any)
If samples require cooling, was the temperature between 0°C to ≤ 6°C ⁽¹⁾ ?	<input checked="" type="checkbox"/>	<input type="checkbox"/>	<input type="checkbox"/>	
Is there ice present (document if blue ice is used)	<input checked="" type="checkbox"/>	<input type="checkbox"/>	<input type="checkbox"/>	
Are custody seals present on cooler? (if so, document in comments if they are signed and dated, broken or intact)	<input type="checkbox"/>	<input type="checkbox"/>	<input checked="" type="checkbox"/>	
Are custody seals present on each sample container? (if so, document in comments if they are signed and dated, broken or intact)	<input type="checkbox"/>	<input type="checkbox"/>	<input checked="" type="checkbox"/>	
Were all samples received intact ⁽¹⁾ ?	<input checked="" type="checkbox"/>	<input type="checkbox"/>	<input type="checkbox"/>	
Was adequate sample volume provided ⁽¹⁾ ?	<input checked="" type="checkbox"/>	<input type="checkbox"/>	<input type="checkbox"/>	
Are short holding time analytes or samples with HTs due within 48 hours present ⁽¹⁾ ?	<input type="checkbox"/>	<input type="checkbox"/>	<input checked="" type="checkbox"/>	
Is a chain-of-custody (COC) present and filled out completely ⁽¹⁾ ?	<input checked="" type="checkbox"/>	<input type="checkbox"/>	<input type="checkbox"/>	
Does the COC agree with the number and type of sample bottles received ⁽¹⁾ ?	<input checked="" type="checkbox"/>	<input type="checkbox"/>	<input type="checkbox"/>	
Do the sample IDs on the bottle labels match the COC ⁽¹⁾ ?	<input checked="" type="checkbox"/>	<input type="checkbox"/>	<input type="checkbox"/>	
Is the COC properly relinquished by the client with date and time recorded ⁽¹⁾ ?	<input checked="" type="checkbox"/>	<input type="checkbox"/>	<input type="checkbox"/>	
For volatiles in water – is there headspace (> ¼ inch bubble) present? If yes, contact client and note in narrative.	<input type="checkbox"/>	<input checked="" type="checkbox"/>	<input type="checkbox"/>	
Are samples preserved that require preservation and was it checked ⁽¹⁾ ? (note ID of confirmation instrument used in comments) / (preservation is not confirmed for subcontracted analyses in order to insure sample integrity) (pH < 2 for samples preserved with HNO ₃ , HCL, H ₂ SO ₄) / (pH > 10 for samples preserved with NaAsO ₂ +NaOH, ZnAc+NaOH)	<input type="checkbox"/>	<input type="checkbox"/>	<input checked="" type="checkbox"/>	
Additional Comments (if any):				

⁽¹⁾if NO, then contact the client before proceeding with analysis and note date/time and person contacted as well as the corrective action to in the additional comments (above) and the case narrative.

Reviewed by (Project Manager) Jm

Date/Time Reviewed 2-18-21

Origins Laboratory, Inc.

Jordan A. Merrill

The results in this report apply to the samples analyzed in accordance with the chain of custody document. This analytical report must be reproduced in its entirety.

Eagle Environmental Consulting, Inc.
8000 W 44th Ave
Wheat Ridge CO 80033

Martin C Eckert III
Project Number: [none]
Project: Noble - Agricultural Products Federal #32-17

MW-01R

2/16/2021 2:42:00PM

Analyte	Result	Reporting Limit	Units	Dilution	Batch	Analyst	Prepared	Analyzed	Notes
---------	--------	-----------------	-------	----------	-------	---------	----------	----------	-------

Origins Laboratory, Inc. Y102293-01 (Water)

BTE N TMBs by 8260D

1,2,4-Trimethylbenzene	67.8	4.00	ug/L	4	B1B1705	D	02/17/2021	02/18/2021	
1,3,5-Trimethylbenzene	48.4	4.00	"	"	"	D	"	"	
Benzene	44.1	4.00	"	"	"	D	"	"	
Ethylbenzene	24.3	4.00	"	"	"	D	"	"	
Naphthalene	ND	16.0	"	"	"	D	"	"	U
Toluene	ND	4.00	"	"	"	D	"	"	U
ylenes, total	251	4.00	"	"	"	D	"	"	

urro ate ichloroethane d
urro ate Toluene d
urro ate romofluorobenzene

" " "
" " "
" " "

Origins Laboratory, Inc.

The results in this report apply to the samples analyzed in accordance with the chain of custody document. This analytical report must be reproduced in its entirety.

Eagle Environmental Consulting, Inc.
8000 W 44th Ave
Wheat Ridge CO 80033

Martin C Eckert III
Project Number: [none]
Project: Noble - Agricultural Products Federal #32-17

MW-02R

2/16/2021 2:08:00PM

Analyte	Result	Reporting Limit	Units	Dilution	Batch	Analyst	Prepared	Analyzed	Notes
---------	--------	-----------------	-------	----------	-------	---------	----------	----------	-------

Origins Laboratory, Inc. Y102293-02 (Water)

BTE N TMBs by 8260D

1,2,4-Trimethylbenzene	ND	4.00	ug/L	4	B1B1705	D	02/17/2021	02/17/2021	U
1,3,5-Trimethylbenzene	ND	4.00	"	"	"	D	"	"	U
Benzene	ND	4.00	"	"	"	D	"	"	U
Ethylbenzene	ND	4.00	"	"	"	D	"	"	U
Naphthalene	ND	16.0	"	"	"	D	"	"	U
Toluene	ND	4.00	"	"	"	D	"	"	U
ylenes, total	ND	4.00	"	"	"	D	"	"	U

urro ate ichloroethane d
urro ate Toluene d
urro ate romofluorobenzene

" " "
" " "
" " "

Origins Laboratory, Inc.



The results in this report apply to the samples analyzed in accordance with the chain of custody document. This analytical report must be reproduced in its entirety.

Eagle Environmental Consulting, Inc.
8000 W 44th Ave
Wheat Ridge CO 80033

Martin C Eckert III
Project Number: [none]
Project: Noble - Agricultural Products Federal #32-17

MW-03R

2/16/2021 2:37:00PM

Analyte	Result	Reporting Limit	Units	Dilution	Batch	Analyst	Prepared	Analyzed	Notes
---------	--------	-----------------	-------	----------	-------	---------	----------	----------	-------

Origins Laboratory, Inc. Y102293-03 (Water)

BTE N TMBs by 8260D

1,2,4-Trimethylbenzene	201	4.00	ug/L	4	B1B1705	D	02/17/2021	02/17/2021	
1,3,5-Trimethylbenzene	125	4.00	"	"	"	D	"	"	
Benzene	151	4.00	"	"	"	D	"	"	
Ethylbenzene	15.6	4.00	"	"	"	D	"	"	
Naphthalene	ND	16.0	"	"	"	D	"	"	U
Toluene	ND	4.00	"	"	"	D	"	"	U
ylenes, total	599	4.00	"	"	"	D	"	"	

urro ate ichloroethane d
urro ate Toluene d
urro ate romofluorobenzene

" " "
" " "
" " "

Origins Laboratory, Inc.



The results in this report apply to the samples analyzed in accordance with the chain of custody document. This analytical report must be reproduced in its entirety.

Eagle Environmental Consulting, Inc.
8000 W 44th Ave
Wheat Ridge CO 80033

Martin C Eckert III
Project Number: [none]
Project: Noble - Agricultural Products Federal #32-17

MW-04R

2/16/2021 2:30:00PM

Analyte	Result	Reporting Limit	Units	Dilution	Batch	Analyst	Prepared	Analyzed	Notes
---------	--------	-----------------	-------	----------	-------	---------	----------	----------	-------

Origins Laboratory, Inc. Y102293-04 (Water)

BTE N TMBs by 8260D

1,2,4-Trimethylbenzene	148	4.00	ug/L	4	B1B1705	D	02/17/2021	02/17/2021	
1,3,5-Trimethylbenzene	12.0	4.00	"	"	"	D	"	"	
Benzene	23.7	4.00	"	"	"	D	"	"	
Ethylbenzene	46.8	4.00	"	"	"	D	"	"	
Naphthalene	ND	16.0	"	"	"	D	"	"	U
Toluene	ND	4.00	"	"	"	D	"	"	U
ylenes, total	283	4.00	"	"	"	D	"	"	

urro ate ichloroethane d
urro ate Toluene d
urro ate romofluorobenzene

" " "
" " "
" " "

Origins Laboratory, Inc.



The results in this report apply to the samples analyzed in accordance with the chain of custody document. This analytical report must be reproduced in its entirety.

Eagle Environmental Consulting, Inc.
8000 W 44th Ave
Wheat Ridge CO 80033

Martin C Eckert III
Project Number: [none]
Project: Noble - Agricultural Products Federal #32-17

MW-05R

2/16/2021 2:20:00PM

Analyte	Result	Reporting Limit	Units	Dilution	Batch	Analyst	Prepared	Analyzed	Notes
---------	--------	-----------------	-------	----------	-------	---------	----------	----------	-------

Origins Laboratory, Inc. Y102293-05 (Water)

BTE N TMBs by 8260D

1,2,4-Trimethylbenzene	ND	4.00	ug/L	4	B1B1705	D	02/17/2021	02/17/2021	U
1,3,5-Trimethylbenzene	ND	4.00	"	"	"	D	"	"	U
Benzene	ND	4.00	"	"	"	D	"	"	U
Ethylbenzene	11.0	4.00	"	"	"	D	"	"	
Naphthalene	ND	16.0	"	"	"	D	"	"	U
Toluene	ND	4.00	"	"	"	D	"	"	U
ylenes, total	ND	4.00	"	"	"	D	"	"	U

urro ate ichloroethane d
urro ate Toluene d
urro ate romofluorobenzene

" " "
" " "
" " "

Origins Laboratory, Inc.



The results in this report apply to the samples analyzed in accordance with the chain of custody document. This analytical report must be reproduced in its entirety.

Eagle Environmental Consulting, Inc.
8000 W 44th Ave
Wheat Ridge CO 80033

Martin C Eckert III
Project Number: [none]
Project: Noble - Agricultural Products Federal #32-17

MW-06R2

2/16/2021 2:52:00PM

Analyte	Result	Reporting Limit	Units	Dilution	Batch	Analyst	Prepared	Analyzed	Notes
---------	--------	-----------------	-------	----------	-------	---------	----------	----------	-------

Origins Laboratory, Inc. Y102293-06 (Water)

BTE N TMBs by 8260D

1,2,4-Trimethylbenzene	ND	4.00	ug/L	4	B1B1705	D	02/17/2021	02/18/2021	U
1,3,5-Trimethylbenzene	ND	4.00	"	"	"	D	"	"	U
Benzene	ND	4.00	"	"	"	D	"	"	U
Ethylbenzene	ND	4.00	"	"	"	D	"	"	U
Naphthalene	ND	16.0	"	"	"	D	"	"	U
Toluene	ND	4.00	"	"	"	D	"	"	U
ylenes, total	ND	4.00	"	"	"	D	"	"	U

urro ate ichloroethane d
urro ate Toluene d
urro ate romofluorobenzene

" " "
" " "
" " "

Origins Laboratory, Inc.



The results in this report apply to the samples analyzed in accordance with the chain of custody document. This analytical report must be reproduced in its entirety.

Eagle Environmental Consulting, Inc.
8000 W 44th Ave
Wheat Ridge CO 80033

Martin C Eckert III
Project Number: [none]
Project: Noble - Agricultural Products Federal #32-17

MW-07

2/16/2021 12:57:00PM

Analyte	Result	Reporting Limit	Units	Dilution	Batch	Analyst	Prepared	Analyzed	Notes
---------	--------	-----------------	-------	----------	-------	---------	----------	----------	-------

Origins Laboratory, Inc. Y102293-07 (Water)

BTE N TMBs by 8260D

1,2,4-Trimethylbenzene	ND	1.00	ug/L	1	B1B1705	D	02/17/2021	02/18/2021	U
1,3,5-Trimethylbenzene	ND	1.00	"	"	"	D	"	"	U
Benzene	ND	1.00	"	"	"	D	"	"	U
Ethylbenzene	ND	1.00	"	"	"	D	"	"	U
Naphthalene	ND	4.00	"	"	"	D	"	"	U
Toluene	ND	1.00	"	"	"	D	"	"	U
ylenes, total	ND	1.00	"	"	"	D	"	"	U

urro ate ichloroethane d
urro ate Toluene d
urro ate romofluorobenzene

" " "
" " "
" " "

Origins Laboratory, Inc.



The results in this report apply to the samples analyzed in accordance with the chain of custody document. This analytical report must be reproduced in its entirety.

Eagle Environmental Consulting, Inc.
8000 W 44th Ave
Wheat Ridge CO 80033

Martin C Eckert III
Project Number: [none]
Project: Noble - Agricultural Products Federal #32-17

MW-08

2/16/2021 1:00:00PM

Analyte	Result	Reporting Limit	Units	Dilution	Batch	Analyst	Prepared	Analyzed	Notes
---------	--------	-----------------	-------	----------	-------	---------	----------	----------	-------

Origins Laboratory, Inc. Y102293-08 (Water)

BTE N TMBs by 8260D

1,2,4-Trimethylbenzene	ND	1.00	ug/L	1	B1B1705	D	02/17/2021	02/18/2021	U
1,3,5-Trimethylbenzene	ND	1.00	"	"	"	D	"	"	U
Benzene	ND	1.00	"	"	"	D	"	"	U
Ethylbenzene	ND	1.00	"	"	"	D	"	"	U
Naphthalene	ND	4.00	"	"	"	D	"	"	U
Toluene	ND	1.00	"	"	"	D	"	"	U
ylenes, total	ND	1.00	"	"	"	D	"	"	U

urro ate ichloroethane d
urro ate Toluene d
urro ate romofluorobenzene

" " "
" " "
" " "

Origins Laboratory, Inc.



The results in this report apply to the samples analyzed in accordance with the chain of custody document. This analytical report must be reproduced in its entirety.

Eagle Environmental Consulting, Inc.
8000 W 44th Ave
Wheat Ridge CO 80033

Martin C Eckert III
Project Number: [none]
Project: Noble - Agricultural Products Federal #32-17

MW-09R

2/16/2021 1:20:00PM

Analyte	Result	Reporting Limit	Units	Dilution	Batch	Analyst	Prepared	Analyzed	Notes
---------	--------	-----------------	-------	----------	-------	---------	----------	----------	-------

Origins Laboratory, Inc. Y102293-09 (Water)

BTE N TMBs by 8260D

1,2,4-Trimethylbenzene	ND	1.00	ug/L	1	B1B1705	D	02/17/2021	02/18/2021	U
1,3,5-Trimethylbenzene	ND	1.00	"	"	"	D	"	"	U
Benzene	ND	1.00	"	"	"	D	"	"	U
Ethylbenzene	ND	1.00	"	"	"	D	"	"	U
Naphthalene	ND	4.00	"	"	"	D	"	"	U
Toluene	ND	1.00	"	"	"	D	"	"	U
ylenes, total	ND	1.00	"	"	"	D	"	"	U

urro ate ichloroethane d
urro ate Toluene d
urro ate romofluorobenzene

" " "
" " "
" " "

Origins Laboratory, Inc.



The results in this report apply to the samples analyzed in accordance with the chain of custody document. This analytical report must be reproduced in its entirety.

Eagle Environmental Consulting, Inc.
8000 W 44th Ave
Wheat Ridge CO 80033

Martin C Eckert III
Project Number: [none]
Project: Noble - Agricultural Products Federal #32-17

MW-10

2/16/2021 1:33:00PM

Analyte	Result	Reporting Limit	Units	Dilution	Batch	Analyst	Prepared	Analyzed	Notes
---------	--------	-----------------	-------	----------	-------	---------	----------	----------	-------

Origins Laboratory, Inc. Y102293-10 (Water)

BTE N TMBs by 8260D

1,2,4-Trimethylbenzene	ND	1.00	ug/L	1	B1B1705	D	02/17/2021	02/18/2021	U
1,3,5-Trimethylbenzene	13.1	1.00	"	"	"	D	"	"	
Benzene	ND	1.00	"	"	"	D	"	"	U
Ethylbenzene	ND	1.00	"	"	"	D	"	"	U
Naphthalene	ND	4.00	"	"	"	D	"	"	U
Toluene	ND	1.00	"	"	"	D	"	"	U
ylenes, total	ND	1.00	"	"	"	D	"	"	U

urro ate ichloroethane d
urro ate Toluene d
urro ate romofluorobenzene

" " "
" " "
" " "

Origins Laboratory, Inc.



The results in this report apply to the samples analyzed in accordance with the chain of custody document. This analytical report must be reproduced in its entirety.

Eagle Environmental Consulting, Inc.
8000 W 44th Ave
Wheat Ridge CO 80033

Martin C Eckert III
Project Number: [none]
Project: Noble - Agricultural Products Federal #32-17

MW-11

2/16/2021 1:38:00PM

Analyte	Result	Reporting Limit	Units	Dilution	Batch	Analyst	Prepared	Analyzed	Notes
---------	--------	-----------------	-------	----------	-------	---------	----------	----------	-------

Origins Laboratory, Inc. Y102293-11 (Water)

BTE N TMBs by 8260D

1,2,4-Trimethylbenzene	ND	1.00	ug/L	1	B1B1705	D	02/17/2021	02/18/2021	U
1,3,5-Trimethylbenzene	ND	1.00	"	"	"	D	"	"	U
Benzene	ND	1.00	"	"	"	D	"	"	U
Ethylbenzene	ND	1.00	"	"	"	D	"	"	U
Naphthalene	ND	4.00	"	"	"	D	"	"	U
Toluene	ND	1.00	"	"	"	D	"	"	U
ylenes, total	ND	1.00	"	"	"	D	"	"	U

urro ate ichloroethane d
urro ate Toluene d
urro ate romofluorobenzene

" " "
" " "
" " "

Origins Laboratory, Inc.



The results in this report apply to the samples analyzed in accordance with the chain of custody document. This analytical report must be reproduced in its entirety.

Eagle Environmental Consulting, Inc.
8000 W 44th Ave
Wheat Ridge CO 80033

Martin C Eckert III
Project Number: [none]
Project: Noble - Agricultural Products Federal #32-17

MW-12

2/16/2021 1:46:00PM

Analyte	Result	Reporting Limit	Units	Dilution	Batch	Analyst	Prepared	Analyzed	Notes
---------	--------	-----------------	-------	----------	-------	---------	----------	----------	-------

Origins Laboratory, Inc. Y102293-12 (Water)

BTE N TMBs by 8260D

1,2,4-Trimethylbenzene	ND	1.00	ug/L	1	B1B1705	D	02/17/2021	02/18/2021	U
1,3,5-Trimethylbenzene	ND	1.00	"	"	"	D	"	"	U
Benzene	ND	1.00	"	"	"	D	"	"	U
Ethylbenzene	ND	1.00	"	"	"	D	"	"	U
Naphthalene	ND	4.00	"	"	"	D	"	"	U
Toluene	ND	1.00	"	"	"	D	"	"	U
ylenes, total	ND	1.00	"	"	"	D	"	"	U

urro ate ichloroethane d
urro ate Toluene d
urro ate romofluorobenzene

" " "
" " "
" " "

Origins Laboratory, Inc.



The results in this report apply to the samples analyzed in accordance with the chain of custody document. This analytical report must be reproduced in its entirety.

Eagle Environmental Consulting, Inc.
8000 W 44th Ave
Wheat Ridge CO 80033

Martin C Eckert III
Project Number: [none]
Project: Noble - Agricultural Products Federal #32-17

MW-13

2/16/2021 2:05:00PM

Analyte	Result	Reporting Limit	Units	Dilution	Batch	Analyst	Prepared	Analyzed	Notes
---------	--------	-----------------	-------	----------	-------	---------	----------	----------	-------

Origins Laboratory, Inc. Y102293-13 (Water)

BTE N TMBs by 8260D

1,2,4-Trimethylbenzene	ND	1.00	ug/L	1	B1B1705	D	02/17/2021	02/18/2021	U
1,3,5-Trimethylbenzene	ND	1.00	"	"	"	D	"	"	U
Benzene	ND	1.00	"	"	"	D	"	"	U
Ethylbenzene	ND	1.00	"	"	"	D	"	"	U
Naphthalene	ND	4.00	"	"	"	D	"	"	U
Toluene	ND	1.00	"	"	"	D	"	"	U
ylenes, total	ND	1.00	"	"	"	D	"	"	U

urro ate ichloroethane d
urro ate Toluene d
urro ate romofluorobenzene

" " "
" " "
" " "

Origins Laboratory, Inc.



The results in this report apply to the samples analyzed in accordance with the chain of custody document. This analytical report must be reproduced in its entirety.

Eagle Environmental Consulting, Inc.
8000 W 44th Ave
Wheat Ridge CO 80033

Martin C Eckert III
Project Number: [none]
Project: Noble - Agricultural Products Federal #32-17

MW-14

2/16/2021 12:40:00PM

Analyte	Result	Reporting Limit	Units	Dilution	Batch	Analyst	Prepared	Analyzed	Notes
---------	--------	-----------------	-------	----------	-------	---------	----------	----------	-------

Origins Laboratory, Inc. Y102293-14 (Water)

BTE N TMBs by 8260D

1,2,4-Trimethylbenzene	ND	1.00	ug/L	1	B1B1705	D	02/17/2021	02/18/2021	U
1,3,5-Trimethylbenzene	ND	1.00	"	"	"	D	"	"	U
Benzene	ND	1.00	"	"	"	D	"	"	U
Ethylbenzene	ND	1.00	"	"	"	D	"	"	U
Naphthalene	ND	4.00	"	"	"	D	"	"	U
Toluene	ND	1.00	"	"	"	D	"	"	U
ylenes, total	ND	1.00	"	"	"	D	"	"	U

urro ate ichloroethane d
urro ate Toluene d
urro ate romofluorobenzene

" " "
" " "
" " "

Origins Laboratory, Inc.



The results in this report apply to the samples analyzed in accordance with the chain of custody document. This analytical report must be reproduced in its entirety.

Eagle Environmental Consulting, Inc.

8000 W 44th Ave

Wheat Ridge CO 80033

Martin C Eckert III

Project Number: [none]

Project: Noble - Agricultural Products Federal #32-17

olatile Organic Compounds by GC/MS SW846 8260D - Quality Control
Origins Laboratory, Inc.

Analyte	Result	Reporting Limit	Units	Spike Level	Source Result	%REC	%REC Limits	RPD	RPD Limit	Notes
---------	--------	-----------------	-------	-------------	---------------	------	-------------	-----	-----------	-------

Batch B1B1705 - EPA 5030B (Water)

Blank (B1B1705-BLK1)

Prepared: 02/17/2021 Analyzed: 02/17/2021

1,2,4-Trimethylbenzene	ND	1.00	ug/L							U
1,3,5-Trimethylbenzene	ND	1.00	"							U
Benzene	ND	1.00	"							U
Ethylbenzene	ND	1.00	"							U
Naphthalene	ND	4.00	"							U
Toluene	ND	1.00	"							U
ylenes, total	ND	1.00	"							U

urro ate ichloroethane d

urro ate Toluene d

urro ate romofluorobenzene

The results in this report apply to the samples analyzed in accordance with the chain of custody document. This analytical report must be reproduced in its entirety.

Origins Laboratory, Inc.

Jordan A. Merrill For Noelle Doyle Mathis, President

Eagle Environmental Consulting, Inc.
8000 W 44th Ave
Wheat Ridge CO 80033

Martin C Eckert III
Project Number: [none]
Project: Noble - Agricultural Products Federal #32-17

olatile Organic Compounds by GC/MS SW846 8260D - Quality Control
Origins Laboratory, Inc.

Analyte	Result	Reporting Limit	Units	Spike Level	Source Result	%REC	%REC Limits	RPD	RPD Limit	Notes
---------	--------	-----------------	-------	-------------	---------------	------	-------------	-----	-----------	-------

Batch B1B1705 - EPA 5030B (Water)

LCS (B1B1705-BS1)

Prepared: 02/17/2021 Analyzed: 02/17/2021

1,2,4-Trimethylbenzene	50.2	1.00	ug/L	50.0		100	70-130			
1,3,5-Trimethylbenzene	51.7	1.00	"	50.0		103	70-130			
Benzene	51.1	1.00	"	50.0		102	70-130			
Ethylbenzene	51.6	1.00	"	50.0		103	70-130			
m,p-ylene	98.7	2.00	"	100		98.7	70-130			
Naphthalene	56.0	4.00	"	50.0		112	70-130			
o-ylene	49.8	1.00	"	50.0		99.7	70-130			
Toluene	45.7	1.00	"	50.0		91.5	70-130			

urro ate ichloroethane d
urro ate Toluene d
urro ate romofluorobenzene

Origins Laboratory, Inc.



The results in this report apply to the samples analyzed in accordance with the chain of custody document. This analytical report must be reproduced in its entirety.

Eagle Environmental Consulting, Inc.
8000 W 44th Ave
Wheat Ridge CO 80033

Martin C Eckert III
Project Number: [none]
Project: Noble - Agricultural Products Federal #32-17

olatile Organic Compounds by GC/MS SW846 8260D - Quality Control
Origins Laboratory, Inc.

Analyte	Result	Reporting Limit	Units	Spike Level	Source Result	%REC	%REC Limits	RPD	RPD Limit	Notes
---------	--------	-----------------	-------	-------------	---------------	------	-------------	-----	-----------	-------

Batch B1B1705 - EPA 5030B (Water)

Matri	Spike (B1B1705-MS1)	Source: Y102296-01			Prepared: 02/17/2021 Analyzed: 02/17/2021					
1,2,4-Trimethylbenzene	55.0	1.00	ug/L	50.0	ND	110	70-130			
1,3,5-Trimethylbenzene	55.1	1.00	"	50.0	ND	110	70-130			
Benzene	55.6	1.00	"	50.0	ND	111	70-130			
Ethylbenzene	53.1	1.00	"	50.0	ND	106	70-130			
m,p- ylene	103	2.00	"	100	ND	103	70-130			
Naphthalene	67.0	4.00	"	50.0	ND	134	70-130			M-07
o- ylene	54.9	1.00	"	50.0	ND	110	70-130			
Toluene	48.2	1.00	"	50.0	ND	96.5	70-130			
urro ate	ichloroethane d		"	.						
urro ate	Toluene d		"	.						
urro ate	romofluorobenzene		"	.						

Origins Laboratory, Inc.



The results in this report apply to the samples analyzed in accordance with the chain of custody document. This analytical report must be reproduced in its entirety.

Eagle Environmental Consulting, Inc.
8000 W 44th Ave
Wheat Ridge CO 80033

Martin C Eckert III
Project Number: [none]
Project: Noble - Agricultural Products Federal #32-17

olatile Organic Compounds by GC/MS SW846 8260D - Quality Control
Origins Laboratory, Inc.

Analyte	Result	Reporting Limit	Units	Spike Level	Source Result	%REC	%REC Limits	RPD	RPD Limit	Notes
Batch B1B1705 - EPA 5030B (Water)										
Matri	Spike Dup (B1B1705-MSD1)	Source: Y102296-01			Prepared: 02/17/2021 Analyzed: 02/17/2021					
1,2,4-Trimethylbenzene	61.6	1.00	ug/L	50.0	ND	123	70-130	11.5	20	
1,3,5-Trimethylbenzene	62.7	1.00	"	50.0	ND	125	70-130	12.8	20	
Benzene	63.2	1.00	"	50.0	ND	126	70-130	12.9	20	
Ethylbenzene	60.0	1.00	"	50.0	ND	120	70-130	12.1	20	
m,p- ylene	116	2.00	"	100	ND	116	70-130	11.9	20	
Naphthalene	74.8	4.00	"	50.0	ND	150	70-130	11.0	20	M-07
o- ylene	61.4	1.00	"	50.0	ND	123	70-130	11.2	20	
Toluene	55.3	1.00	"	50.0	ND	111	70-130	13.6	20	
urro ate	ichloroethane d		"	.	.	.				
urro ate	Toluene d		"	.	.	.				
urro ate	romofluorobenzene		"	.	.	.				

Origins Laboratory, Inc.



The results in this report apply to the samples analyzed in accordance with the chain of custody document. This analytical report must be reproduced in its entirety.

Eagle Environmental Consulting, Inc.

8000 W 44th Ave

Wheat Ridge CO 80033

Martin C Eckert III

Project Number: [none]

Project: Noble - Agricultural Products Federal
#32-17

Notes and Definitions

U Sample is Non-Detect.

M-07 The spike recovery was outside acceptance limits for the MS and/or MSD. The batch was accepted based on acceptable LCS recovery.

ND Analyte NOT DETECTED at or above the reporting limit

RPD Relative Percent Difference

All soil results are reported at a wet weight basis.

Origins Laboratory, Inc.



The results in this report apply to the samples analyzed in accordance with the chain of custody document. This analytical report must be reproduced in its entirety.



February 24, 2021

Eagle Environmental Consulting, Inc.

Martin C Eckert III

8000 W 44th Ave

Wheat Ridge CO 80033

**Project Name - Noble - Agricultural Products
Federal #32-17**

Project Number - [none]

Attached are your analytical results for Noble - Agricultural Products Federal #32-17 received by Origins Laboratory, Inc. February 16, 2021. This project is associated with Origins project number Y102294-01.

The analytical results in the following report were analyzed under the guidelines of EPA Methods. These methods are identified as follows; "SW" are defined in SW-846, "EPA" are defined in 40CFR part 136 and "SM" are defined in the most current revision of Standard Methods For the Examination of Water and Wastewater.

The analytical results apply specifically to the samples and analyses specified per the attached Chain of Custody. As such, this report shall not be reproduced except in full, without the written approval of Origin's laboratory.

Unless otherwise noted, the analytical results for all soil samples are reported on a wet weight basis. All analytical analyses were performed under NELAP guidelines unless noted by a data qualifier.

Any holding time exceedances, deviations from the method specifications or deviations from Origins Laboratory's Standard Operating Procedures are outlined in the case narrative.

Thank you for selecting Origins for your analytical needs. Please contact us with any questions concerning this report, or if we can help with anything at all.

Origins Laboratory, Inc.
303.433.1322
o-squad@oelabinc.com



1725 Elk Place, Denver, CO 80211 | Phone: 303.433.1322 | Fax: 303.265.9645

Eagle Environmental Consulting, Inc.

8000 W 44th Ave

Wheat Ridge CO 80033

Martin C Eckert III

Project Number: [none]

Project: Noble - Agricultural Products Federal
#32-17

CROSS REFERENCE REPORT

Sample ID	Laboratory ID	Matrix	Date Sampled	Date Received
MW-01R	Y102294-01	Water	February 16, 2021 14:42	02/16/2021 16:00
MW-02R	Y102294-02	Water	February 16, 2021 14:08	02/16/2021 16:00
MW-03R	Y102294-03	Water	February 16, 2021 14:37	02/16/2021 16:00
MW-04R	Y102294-04	Water	February 16, 2021 14:30	02/16/2021 16:00
MW-05R	Y102294-05	Water	February 16, 2021 14:20	02/16/2021 16:00
MW-06R2	Y102294-06	Water	February 16, 2021 14:52	02/16/2021 16:00
MW-07	Y102294-07	Water	February 16, 2021 12:51	02/16/2021 16:00
MW-08	Y102294-08	Water	February 16, 2021 13:00	02/16/2021 16:00
MW-09R	Y102294-09	Water	February 16, 2021 13:20	02/16/2021 16:00
MW-10	Y102294-10	Water	February 16, 2021 13:33	02/16/2021 16:00
MW-11	Y102294-11	Water	February 16, 2021 13:38	02/16/2021 16:00
MW-12	Y102294-12	Water	February 16, 2021 13:46	02/16/2021 16:00
MW-13	Y102294-13	Water	February 16, 2021 14:05	02/16/2021 16:00
MW-14	Y102294-14	Water	February 16, 2021 12:40	02/16/2021 16:00

Origins Laboratory, Inc.



*The results in this report apply to the samples analyzed in
accordance with the chain of custody document. This
analytical report must be reproduced in its entirety.*

Eagle Environmental Consulting, Inc.

8000 W 44th Ave

Wheat Ridge CO 80033

Martin C Eckert III

Project Number: [none]

Project: Noble - Agricultural Products Federal
#32-17

Origins Laboratory, Inc.



*The results in this report apply to the samples analyzed in
accordance with the chain of custody document. This
analytical report must be reproduced in its entirety.*

Eagle Environmental Consulting, Inc.
8000 W 44th Ave
Wheat Ridge CO 80033

Martin C Eckert III
Project Number: [none]
Project: Noble - Agricultural Products Federal #32-17

www.originslaboratory.com
page 1 of 2
102294
ORIGINS LABORATORY, INC
Client: Eagle Environmental Consulting
Address: 8000 W. 44th Ave
Wheat Ridge, CO 80033
Telephone Number: (303) 433-0474
Email Address: mace@eagle-enviro.com
Project Manager: Martin Eckert III
Project Name: AGRICULTURAL PRODUCTS FEDERAL #32-17
Project Number: [none]
Samples Collected By: MM LAB

1725 Elk Place | Denver, CO 80211 | Phone: 303.433.1322 | Fax: 303.265.9645

Sample ID Description	Date Sampled	Time Sampled	# of Containers	Preservative				Matrix			Analysis				Sample Instructions
				Unpreserved	HCl	HNO ₃	Other	Groundwater	Soil	Air Summary	Other	THS	CHLORIDE	CPA 2000-0	CPA 2000-0
MW-01A	2/10/21	1442	2	X				X				X	X		
MW-02A		1418													
MW-03A		1437													
MW-04A		1430													
MW-05A		1420													
MW-06A		1452													
MW-07		1251													
MW-08		1340													
MW-09A		1320													
MW-10		1333													
Relinquished By:	Date:	Time:	Time:	Received By:	Date:	Time:	Time:	Received By:	Date:	Time:	Time:	Turnaround Time:			
	2/10/21	1600			2/10/21	1600			2/10/21	1600		24 Hr			
												48 Hr			
												72 Hr			
												Standard			

Date Results Needed: Notice

Temp Received: 2.3

Bill to VACS

Origins Laboratory, Inc.

Jordan A. Merrill

The results in this report apply to the samples analyzed in accordance with the chain of custody document. This analytical report must be reproduced in its entirety.

Eagle Environmental Consulting, Inc.
8000 W 44th Ave
Wheat Ridge CO 80033

Martin C Eckert III
Project Number: [none]
Project: Noble - Agricultural Products Federal #32-17

ORIGINS
LABORATORY, INC

www.originslaboratory.com

page 2 of 2
1102294

Client: Eagle Environmental Consulting
Address: 8000 W. 44th Ave
Wheat Ridge, CO 80033
Telephone Number: (303) 433-0177
Email Address: MCE@Eagle-Enviro.com

Project Manager: MARTIN ECKERT III
Project Name: AGRICULTURAL PRODUCTS FEDERAL #32-17
Project Number: ---
Samples Collected By: MCE/ADP

1725 Elk Place | Denver, CO 80211 | Phone: 303.433.1322 | Fax: 303.265.9645

Sample ID Description	Date Sampled	Time Sampled	# of Containers	Preservative				Matrix			Analysis	Sample Instructions
				Unpreserved	HCl	HNO ₃	Other	Groundwater	Soil	Air Summa Canister #		
MW-11	2/16/21	1358	2	X				X			TDS 2540C CHLORIDE SULFATE EPD 500-0	1
MW-12		1346	1									2
MW-13		1405	1									3
MW-14		1240	1									4
												5
												6
												7
												8
												9
												10

Relinquished By:	Date:	Time:	Received By:	Date:	Time:	Turnaround Time:
[Signature]	2/16/21	1100	[Signature]	2/16/21	1600	Same Day <input type="checkbox"/> 24 Hr <input type="checkbox"/> 48 Hr <input type="checkbox"/> 72 Hr <input type="checkbox"/> Standard <input checked="" type="checkbox"/>

Temp Received: 73 Date Results Needed: NOBLE

Origins Laboratory, Inc.

Jordan A. Merrill

The results in this report apply to the samples analyzed in accordance with the chain of custody document. This analytical report must be reproduced in its entirety.

Eagle Environmental Consulting, Inc.

8000 W 44th Ave

Wheat Ridge CO 80033

Martin C Eckert III

Project Number: [none]

Project: Noble - Agricultural Products Federal #32-17

Origins Laboratory

Sample Receipt Checklist

F-012207-01-R1
Effective Date: 01/09/12

Origins Work Order: Y102294

Client: Eagle

Client Project ID: Agricultural Products

Checklist Completed by: JGKDK

Date/time completed: 02/17/21

Shipped Via: HD
(UPS, FedEx, Hand Delivered, Pick-up, etc.)

Airbill #: N/A

Matrix(s) Received: (Check all that apply): Soil/Solid ☒ Water ☐ Other: ☐

Cooler Number/Temperature: 1 2.3 °C 1 °C 1 °C (Describe)

Thermometer ID: T003

Requirement Description	Yes	No	N/A	Comments (if any)
If samples require cooling, was the temperature between 0°C to ≤ 6°C ⁽¹⁾ ?	<input checked="" type="checkbox"/>	<input type="checkbox"/>	<input type="checkbox"/>	
Is there ice present (document if blue ice is used)	<input checked="" type="checkbox"/>	<input type="checkbox"/>	<input type="checkbox"/>	
Are custody seals present on cooler? (if so, document in comments if they are signed and dated, broken or intact)	<input type="checkbox"/>	<input type="checkbox"/>	<input checked="" type="checkbox"/>	
Are custody seals present on each sample container? (if so, document in comments if they are signed and dated, broken or intact)	<input type="checkbox"/>	<input type="checkbox"/>	<input checked="" type="checkbox"/>	
Were all samples received intact ⁽¹⁾ ?	<input checked="" type="checkbox"/>	<input type="checkbox"/>	<input type="checkbox"/>	
Was adequate sample volume provided ⁽¹⁾ ?	<input checked="" type="checkbox"/>	<input type="checkbox"/>	<input type="checkbox"/>	
Are short holding time analytes or samples with HTs due within 48 hours present ⁽¹⁾ ?	<input type="checkbox"/>	<input type="checkbox"/>	<input checked="" type="checkbox"/>	
Is a chain-of-custody (COC) present and filled out completely ⁽¹⁾ ?	<input checked="" type="checkbox"/>	<input type="checkbox"/>	<input type="checkbox"/>	
Does the COC agree with the number and type of sample bottles received ⁽¹⁾ ?	<input checked="" type="checkbox"/>	<input type="checkbox"/>	<input type="checkbox"/>	
Do the sample IDs on the bottle labels match the COC ⁽¹⁾ ?	<input checked="" type="checkbox"/>	<input type="checkbox"/>	<input type="checkbox"/>	
Is the COC properly relinquished by the client with date and time recorded ⁽¹⁾ ?	<input checked="" type="checkbox"/>	<input type="checkbox"/>	<input type="checkbox"/>	
For volatiles in water – is there headspace (> ¼ inch bubble) present? If yes, contact client and note in narrative.	<input type="checkbox"/>	<input checked="" type="checkbox"/>	<input type="checkbox"/>	
Are samples preserved that require preservation and was it checked ⁽¹⁾ ? (note ID of confirmation instrument used in comments) / (preservation is not confirmed for subcontracted analyses in order to insure sample integrity)/(pH < 2 for samples preserved with HNO ₃ , HCl, H ₂ SO ₄) / (pH > 10 for samples preserved with NaAsO ₂ +NaOH, ZnAc+NaOH)	<input type="checkbox"/>	<input type="checkbox"/>	<input checked="" type="checkbox"/>	
Additional Comments (if any):				

⁽¹⁾If NO, then contact the client before proceeding with analysis and note date/time and person contacted as well as the corrective action to in the additional comments (above) and the case narrative.

Reviewed by (Project Manager) Jm

Date/Time Reviewed 2-18-21

Origins Laboratory, Inc.

Jordan A. Merrill

The results in this report apply to the samples analyzed in accordance with the chain of custody document. This analytical report must be reproduced in its entirety.

Eagle Environmental Consulting, Inc.

8000 W 44th Ave

Wheat Ridge CO 80033

Martin C Eckert III

Project Number: [none]

Project: Noble - Agricultural Products Federal
#32-17

MW-01R

2/16/2021 2:42:00PM

Analyte	Result	Reporting		Units	Dilution	Batch	Analyst	Prepared	Analyzed	Notes
		Limit								

GEL Laboratories, LLC

Y102294-01 (Water)

Anions by EPA 300.0

Chloride	82.3	20.0	mg/L	100	2094510	LXA2	02/16/2021	02/21/2021
Sulfate	71.9	40.0	"	"	"	LXA2	"	"

Total Dissolved Solids by 2540C

Total Dissolved Solids	3880	5.00	mg/L	1	B1B1807	DJL	02/18/2021	02/22/2021
------------------------	------	------	------	---	---------	-----	------------	------------

Origins Laboratory, Inc.

The results in this report apply to the samples analyzed in accordance with the chain of custody document. This analytical report must be reproduced in its entirety.

Eagle Environmental Consulting, Inc.

8000 W 44th Ave

Wheat Ridge CO 80033

Martin C Eckert III

Project Number: [none]

Project: Noble - Agricultural Products Federal
#32-17

MW-02R

2/16/2021 2:08:00PM

Analyte	Result	Reporting Limit	Units	Dilution	Batch	Analyst	Prepared	Analyzed	Notes
---------	--------	--------------------	-------	----------	-------	---------	----------	----------	-------

GEL Laboratories, LLC

Y102294-02 (Water)

Anions by EPA 300.0

Chloride	116	20.0	mg/L	100	2094510	LXA2	02/16/2021	02/21/2021	
Sulfate	158	40.0	"	"	"	LXA2	"	"	

Total Dissolved Solids by 2540C

Total Dissolved Solids	874	5.00	mg/L	1	B1B1807	DJL	02/18/2021	02/22/2021	
------------------------	-----	------	------	---	---------	-----	------------	------------	--

Origins Laboratory, Inc.



*The results in this report apply to the samples analyzed in
accordance with the chain of custody document. This
analytical report must be reproduced in its entirety.*

Eagle Environmental Consulting, Inc.

8000 W 44th Ave

Wheat Ridge CO 80033

Martin C Eckert III

Project Number: [none]

Project: Noble - Agricultural Products Federal
#32-17

MW-03R

2/16/2021 2:37:00PM

Analyte	Result	Reporting		Units	Dilution	Batch	Analyst	Prepared	Analyzed	Notes
		Limit								

GEL Laboratories, LLC

Y102294-03 (Water)

Anions by EPA 300.0

Chloride	133	20.0	mg/L	100	2094473	LXA2	02/16/2021	02/19/2021
Sulfate	244	40.0	"	"	"	LXA2	"	"

Total Dissolved Solids by 2540C

Total Dissolved Solids	1210	5.00	mg/L	1	B1B1807	DJL	02/18/2021	02/22/2021
------------------------	------	------	------	---	---------	-----	------------	------------

Origins Laboratory, Inc.



The results in this report apply to the samples analyzed in accordance with the chain of custody document. This analytical report must be reproduced in its entirety.

Eagle Environmental Consulting, Inc.

8000 W 44th Ave

Wheat Ridge CO 80033

Martin C Eckert III

Project Number: [none]

Project: Noble - Agricultural Products Federal
#32-17

MW-04R

2/16/2021 2:30:00PM

Analyte	Result	Reporting		Units	Dilution	Batch	Analyst	Prepared	Analyzed	Notes
		Limit								

GEL Laboratories, LLC

Y102294-04 (Water)

Anions by EPA 300.0

Chloride	57.0	2.00	mg/L	10	2094510	LXA2	02/16/2021	02/22/2021
Sulfate	7.79	4.00	"	"	"	LXA2	"	"

Total Dissolved Solids by 2540C

Total Dissolved Solids	690	5.00	mg/L	1	B1B1807	DJL	02/18/2021	02/22/2021
------------------------	-----	------	------	---	---------	-----	------------	------------

Origins Laboratory, Inc.



The results in this report apply to the samples analyzed in accordance with the chain of custody document. This analytical report must be reproduced in its entirety.

Eagle Environmental Consulting, Inc.

8000 W 44th Ave

Wheat Ridge CO 80033

Martin C Eckert III

Project Number: [none]

Project: Noble - Agricultural Products Federal
#32-17

MW-05R

2/16/2021 2:20:00PM

Analyte	Result	Reporting		Units	Dilution	Batch	Analyst	Prepared	Analyzed	Notes
		Limit								

GEL Laboratories, LLC

Y102294-05 (Water)

Anions by EPA 300.0

Chloride	160	20.0	mg/L	100	2094510	LXA2	02/16/2021	02/22/2021
Sulfate	137	40.0	"	"	"	LXA2	"	"

Total Dissolved Solids by 2540C

Total Dissolved Solids	1160	5.00	mg/L	1	B1B1807	DJL	02/18/2021	02/22/2021
------------------------	------	------	------	---	---------	-----	------------	------------

Origins Laboratory, Inc.



The results in this report apply to the samples analyzed in accordance with the chain of custody document. This analytical report must be reproduced in its entirety.

Eagle Environmental Consulting, Inc.

8000 W 44th Ave

Wheat Ridge CO 80033

Martin C Eckert III

Project Number: [none]

Project: Noble - Agricultural Products Federal
#32-17

MW-06R2

2/16/2021 2:52:00PM

Analyte	Result	Reporting		Units	Dilution	Batch	Analyst	Prepared	Analyzed	Notes
		Limit								

GEL Laboratories, LLC

Y102294-06 (Water)

Anions by EPA 300.0

Chloride	155	20.0	mg/L	100	2094510	LXA2	02/16/2021	02/22/2021
Sulfate	300	40.0	"	"	"	LXA2	"	"

Total Dissolved Solids by 2540C

Total Dissolved Solids	1400	5.00	mg/L	1	B1B1810	DJL	02/18/2021	02/23/2021
------------------------	------	------	------	---	---------	-----	------------	------------

Origins Laboratory, Inc.



The results in this report apply to the samples analyzed in accordance with the chain of custody document. This analytical report must be reproduced in its entirety.

Eagle Environmental Consulting, Inc.

8000 W 44th Ave

Wheat Ridge CO 80033

Martin C Eckert III

Project Number: [none]

Project: Noble - Agricultural Products Federal
#32-17

MW-07

2/16/2021 12:51:00PM

Analyte	Result	Reporting Limit	Units	Dilution	Batch	Analyst	Prepared	Analyzed	Notes
---------	--------	--------------------	-------	----------	-------	---------	----------	----------	-------

GEL Laboratories, LLC

Y102294-07 (Water)

Anions by EPA 300.0

Chloride	121	20.0	mg/L	100	2094510	LXA2	02/16/2021	02/22/2021	
Sulfate	190	40.0	"	"	"	LXA2	"	"	

Total Dissolved Solids by 2540C

Total Dissolved Solids	955	5.00	mg/L	1	B1B1810	DJL	02/18/2021	02/23/2021	
------------------------	-----	------	------	---	---------	-----	------------	------------	--

Origins Laboratory, Inc.



*The results in this report apply to the samples analyzed in
accordance with the chain of custody document. This
analytical report must be reproduced in its entirety.*

Eagle Environmental Consulting, Inc.

8000 W 44th Ave

Wheat Ridge CO 80033

Martin C Eckert III

Project Number: [none]

Project: Noble - Agricultural Products Federal
#32-17

MW-08

2/16/2021 1:00:00PM

Analyte	Result	Reporting Limit	Units	Dilution	Batch	Analyst	Prepared	Analyzed	Notes
---------	--------	--------------------	-------	----------	-------	---------	----------	----------	-------

GEL Laboratories, LLC

Y102294-08 (Water)

Anions by EPA 300.0

Chloride	154	20.0	mg/L	100	2094510	LXA2	02/16/2021	02/22/2021	
Sulfate	226	40.0	"	"	"	LXA2	"	"	

Total Dissolved Solids by 2540C

Total Dissolved Solids	975	5.00	mg/L	1	B1B1810	DJL	02/18/2021	02/23/2021	
------------------------	-----	------	------	---	---------	-----	------------	------------	--

Origins Laboratory, Inc.



*The results in this report apply to the samples analyzed in
accordance with the chain of custody document. This
analytical report must be reproduced in its entirety.*

Eagle Environmental Consulting, Inc.

8000 W 44th Ave

Wheat Ridge CO 80033

Martin C Eckert III

Project Number: [none]

Project: Noble - Agricultural Products Federal
#32-17

MW-09R

2/16/2021 1:20:00PM

Analyte	Result	Reporting		Units	Dilution	Batch	Analyst	Prepared	Analyzed	Notes
		Limit								

GEL Laboratories, LLC

Y102294-09 (Water)

Anions by EPA 300.0

Chloride	148	20.0	mg/L	100	2094511	LXA2	02/16/2021	02/21/2021
Sulfate	167	40.0	"	"	"	LXA2	"	"

Total Dissolved Solids by 2540C

Total Dissolved Solids	910	5.00	mg/L	1	B1B1810	DJL	02/18/2021	02/23/2021
------------------------	-----	------	------	---	---------	-----	------------	------------

Origins Laboratory, Inc.



The results in this report apply to the samples analyzed in accordance with the chain of custody document. This analytical report must be reproduced in its entirety.

Eagle Environmental Consulting, Inc.

8000 W 44th Ave

Wheat Ridge CO 80033

Martin C Eckert III

Project Number: [none]

Project: Noble - Agricultural Products Federal
#32-17

MW-10

2/16/2021 1:33:00PM

Analyte	Result	Reporting Limit	Units	Dilution	Batch	Analyst	Prepared	Analyzed	Notes
---------	--------	--------------------	-------	----------	-------	---------	----------	----------	-------

GEL Laboratories, LLC

Y102294-10 (Water)

Anions by EPA 300.0

Chloride	176	20.0	mg/L	100	2094511	LXA2	02/16/2021	02/21/2021	
Sulfate	240	40.0	"	"	"	LXA2	"	"	

Total Dissolved Solids by 2540C

Total Dissolved Solids	965	5.00	mg/L	1	B1B1810	DJL	02/18/2021	02/23/2021	
------------------------	-----	------	------	---	---------	-----	------------	------------	--

Origins Laboratory, Inc.



*The results in this report apply to the samples analyzed in
accordance with the chain of custody document. This
analytical report must be reproduced in its entirety.*

Eagle Environmental Consulting, Inc.

8000 W 44th Ave

Wheat Ridge CO 80033

Martin C Eckert III

Project Number: [none]

Project: Noble - Agricultural Products Federal
#32-17

MW-11

2/16/2021 1:38:00PM

Analyte	Result	Reporting		Units	Dilution	Batch	Analyst	Prepared	Analyzed	Notes
		Limit								

GEL Laboratories, LLC

Y102294-11 (Water)

Anions by EPA 300.0

Chloride	138	20.0	mg/L	100	2094511	LXA2	02/16/2021	02/21/2021
Sulfate	183	40.0	"	"	"	LXA2	"	"

Total Dissolved Solids by 2540C

Total Dissolved Solids	995	5.00	mg/L	1	B1B1810	DJL	02/18/2021	02/23/2021
------------------------	-----	------	------	---	---------	-----	------------	------------

Origins Laboratory, Inc.



The results in this report apply to the samples analyzed in accordance with the chain of custody document. This analytical report must be reproduced in its entirety.

Eagle Environmental Consulting, Inc.

8000 W 44th Ave

Wheat Ridge CO 80033

Martin C Eckert III

Project Number: [none]

Project: Noble - Agricultural Products Federal #32-17

MW-12

2/16/2021 1:46:00PM

Analyte	Result	Reporting Limit	Units	Dilution	Batch	Analyst	Prepared	Analyzed	Notes
---------	--------	-----------------	-------	----------	-------	---------	----------	----------	-------

GEL Laboratories, LLC

Y102294-12 (Water)

Anions by EPA 300.0

Chloride	139	20.0	mg/L	100	2094511	LXA2	02/16/2021	02/21/2021	
Sulfate	210	40.0	"	"	"	LXA2	"	"	

Total Dissolved Solids by 2540C

Total Dissolved Solids	944	5.00	mg/L	1	B1B1810	DJL	02/18/2021	02/23/2021	
------------------------	-----	------	------	---	---------	-----	------------	------------	--

Origins Laboratory, Inc.

The results in this report apply to the samples analyzed in accordance with the chain of custody document. This analytical report must be reproduced in its entirety.

Eagle Environmental Consulting, Inc.

8000 W 44th Ave

Wheat Ridge CO 80033

Martin C Eckert III

Project Number: [none]

Project: Noble - Agricultural Products Federal
#32-17

MW-13

2/16/2021 2:05:00PM

Analyte	Result	Reporting Limit	Units	Dilution	Batch	Analyst	Prepared	Analyzed	Notes
---------	--------	--------------------	-------	----------	-------	---------	----------	----------	-------

GEL Laboratories, LLC

Y102294-13 (Water)

Anions by EPA 300.0

Chloride	152	20.0	mg/L	100	2094511	LXA2	02/16/2021	02/21/2021	
Sulfate	516	40.0	"	"	"	LXA2	"	"	

Total Dissolved Solids by 2540C

Total Dissolved Solids	1820	5.00	mg/L	1	B1B1810	DJL	02/18/2021	02/23/2021	
------------------------	------	------	------	---	---------	-----	------------	------------	--

Origins Laboratory, Inc.



The results in this report apply to the samples analyzed in accordance with the chain of custody document. This analytical report must be reproduced in its entirety.

Eagle Environmental Consulting, Inc.

8000 W 44th Ave

Wheat Ridge CO 80033

Martin C Eckert III

Project Number: [none]

Project: Noble - Agricultural Products Federal #32-17

MW-14

2/16/2021 12:40:00PM

Analyte	Result	Reporting Limit	Units	Dilution	Batch	Analyst	Prepared	Analyzed	Notes
---------	--------	-----------------	-------	----------	-------	---------	----------	----------	-------

GEL Laboratories, LLC

Y102294-14 (Water)

Anions by EPA 300.0

Chloride	133	20.0	mg/L	100	2094511	LXA2	02/16/2021	02/21/2021	
Sulfate	191	40.0	"	"	"	LXA2	"	"	

Total Dissolved Solids by 2540C

Total Dissolved Solids	1250	5.00	mg/L	1	B1B1810	DJL	02/18/2021	02/23/2021	
------------------------	------	------	------	---	---------	-----	------------	------------	--

Origins Laboratory, Inc.



The results in this report apply to the samples analyzed in accordance with the chain of custody document. This analytical report must be reproduced in its entirety.

Eagle Environmental Consulting, Inc.
8000 W 44th Ave
Wheat Ridge CO 80033

Martin C Eckert III
Project Number: [none]
Project: Noble - Agricultural Products Federal #32-17

Classical Chemistry Parameters - Quality Control Origins Laboratory, Inc.

Analyte	Result	Reporting Limit	Units	Spike Level	Source Result	%REC	%REC Limits	RPD	RPD Limit	Notes
Batch B1B1807 - NO PREP										
Blank (B1B1807-BLK1)					Prepared: 02/18/2021 Analyzed: 02/22/2021					
Total Dissolved Solids	ND	5.00	mg/L							
LCS (B1B1807-BS1)					Prepared: 02/18/2021 Analyzed: 02/22/2021					
Total Dissolved Solids	680	5.00	mg/L	716		95.0	85-115			
Duplicate (B1B1807-DUP1)					Source: Y102274-12 Prepared: 02/18/2021 Analyzed: 02/22/2021					
Total Dissolved Solids	8580	5.00	mg/L		9000			4.75	20	
Batch B1B1810 - NO PREP										
Blank (B1B1810-BLK1)					Prepared: 02/18/2021 Analyzed: 02/23/2021					
Total Dissolved Solids	ND	5.00	mg/L							
LCS (B1B1810-BS1)					Prepared: 02/18/2021 Analyzed: 02/23/2021					
Total Dissolved Solids	498	5.00	mg/L	500		99.6	85-115			
Duplicate (B1B1810-DUP1)					Source: Y102294-06 Prepared: 02/18/2021 Analyzed: 02/23/2021					
Total Dissolved Solids	1410	5.00	mg/L		1400			0.428	20	

Origins Laboratory, Inc.

The results in this report apply to the samples analyzed in accordance with the chain of custody document. This analytical report must be reproduced in its entirety.

Eagle Environmental Consulting, Inc.
8000 W 44th Ave
Wheat Ridge CO 80033

Martin C Eckert III
Project Number: [none]
Project: Noble - Agricultural Products Federal #32-17

Anions by EPA 300.0 - Quality Control GEL Laboratories, LLC

Analyte	Result	Reporting Limit	Units	Spike Level	Source Result	%REC	%REC Limits	RPD	RPD Limit	Notes
Batch 2094511 -										
BLANK (1204757281-BLK)					Prepared: Analyzed: 02/21/2021					
Sulfate	ND	0.400	mg/L				-			U
Chloride	ND	0.200	"				-			U
LCS (1204757282-BKS)					Prepared: Analyzed: 02/21/2021					
Sulfate	9.80	0.400	mg/L	10.0		98	90-110			
Chloride	4.77	0.200	"	5.00		95.3	90-110			
DUP (1204757283 D)					Source: Y102294-09 Prepared: Analyzed: 02/21/2021					
Chloride	148	20.0	mg/L		148		0-20	0.0608	20	
Sulfate	169	40.0	"		167		0-20	1.34	20	
DUP (1204757284 D)					Source: 535302001 Prepared: Analyzed: 02/21/2021					
Chloride	156	20.0	mg/L		157		0-20	0.87	20	
Sulfate	208	40.0	"		208		0-20	0.0289	20	
PS (1204757285 S)					Source: Y102294-09 Prepared: Analyzed: 02/21/2021					
Chloride	627	20.0	mg/L	5.00		95.7	90-110			
Sulfate	1120	40.0	"	10.0		95.3	90-110			
PS (1204757286 S)					Source: 535302001 Prepared: Analyzed: 02/21/2021					
Sulfate	1170	40.0	mg/L	10.0		96.5	90-110			
Chloride	637	20.0	"	5.00		96.1	90-110			

Origins Laboratory, Inc.

The results in this report apply to the samples analyzed in accordance with the chain of custody document. This analytical report must be reproduced in its entirety.

Eagle Environmental Consulting, Inc.
8000 W 44th Ave
Wheat Ridge CO 80033

Martin C Eckert III
Project Number: [none]
Project: Noble - Agricultural Products Federal #32-17

Anions by EPA 300.0 - Quality Control GEL Laboratories, LLC

Analyte	Result	Reporting Limit	Units	Spike Level	Source Result	%REC	%REC Limits	RPD	RPD Limit	Notes
Batch 2094510 -										
BLANK (1204757275-BLK)					Prepared: Analyzed: 02/21/2021					
Sulfate	ND	0.400	mg/L				-			U
Chloride	ND	0.200	"				-			U
LCS (1204757276-BKS)					Prepared: Analyzed: 02/21/2021					
Sulfate	9.87	0.400	mg/L	10.0		98.7	90-110			
Chloride	4.76	0.200	"	5.00		95.2	90-110			
DUP (1204757277 D)					Source: 535291001 Prepared: Analyzed: 02/21/2021					
Sulfate	316	40.0	mg/L		316		0-20	0.0443	20	
Chloride	131	20.0	"		131		0-20	0.0995	20	
DUP (1204757278 D)					Source: Y102294-08 Prepared: Analyzed: 02/22/2021					
Chloride	154	20.0	mg/L		154		0-20	0.0455	20	
Sulfate	226	40.0	"		226		0-20	0.0222	20	
PS (1204757279 S)					Source: 535291001 Prepared: Analyzed: 02/21/2021					
Sulfate	1740	40.0	mg/L	10.0		142	90-110			
Chloride	780	20.0	"	5.00		130	90-110			
PS (1204757280 S)					Source: Y102294-08 Prepared: Analyzed: 02/22/2021					
Sulfate	1230	40.0	mg/L	10.0		99.9	90-110			
Chloride	645	20.0	"	5.00		98.2	90-110			

Origins Laboratory, Inc.



The results in this report apply to the samples analyzed in accordance with the chain of custody document. This analytical report must be reproduced in its entirety.

Eagle Environmental Consulting, Inc.
8000 W 44th Ave
Wheat Ridge CO 80033

Martin C Eckert III
Project Number: [none]
Project: Noble - Agricultural Products Federal #32-17

Anions by EPA 300.0 - Quality Control GEL Laboratories, LLC

Analyte	Result	Reporting Limit	Units	Spike Level	Source Result	%REC	%REC Limits	RPD	RPD Limit	Notes
Batch 2094473 -										
BLANK (1204757144-BLK)					Prepared: Analyzed: 02/19/2021					
Chloride	ND	0.200	mg/L				-			U
Sulfate	ND	0.400	"				-			U
LCS (1204757145-BKS)					Prepared: Analyzed: 02/19/2021					
Sulfate	9.42	0.400	mg/L	10.0		94.2	90-110			
Chloride	4.85	0.200	"	5.00		97.1	90-110			
DUP (1204757146 D)					Source: 535300005 Prepared: Analyzed: 02/20/2021					
Sulfate	8110	400	mg/L		8090		0-20	0.24	20	
Chloride	1830	200	"		1830		0-20	0.284	20	
PS (1204757147 S)					Source: 535300005 Prepared: Analyzed: 02/20/2021					
Chloride	6650	200	mg/L	5.00		96.4	90-110			
Sulfate	18200	400	"	10.0		101	90-110			
DUP (1204757148 D)					Source: 535308011 Prepared: Analyzed: 02/20/2021					
Chloride	380	20.0	mg/L		382		0-20	0.283	20	
Sulfate	496	40.0	"		495		0-20	0.285	20	
PS (1204757149 S)					Source: 535308011 Prepared: Analyzed: 02/20/2021					
Chloride	881	20.0	mg/L	5.00		99.8	90-110			
Sulfate	1460	40.0	"	10.0		96.9	90-110			

Origins Laboratory, Inc.

The results in this report apply to the samples analyzed in accordance with the chain of custody document. This analytical report must be reproduced in its entirety.

Eagle Environmental Consulting, Inc.

8000 W 44th Ave

Wheat Ridge CO 80033

Martin C Eckert III

Project Number: [none]

Project: Noble - Agricultural Products Federal
#32-17

Notes and Definitions

U Result not detected above the detection limit

ND Analyte NOT DETECTED at or above the reporting limit

RPD Relative Percent Difference

All soil results are reported at a wet weight basis.

Origins Laboratory, Inc.



The results in this report apply to the samples analyzed in accordance with the chain of custody document. This analytical report must be reproduced in its entirety.