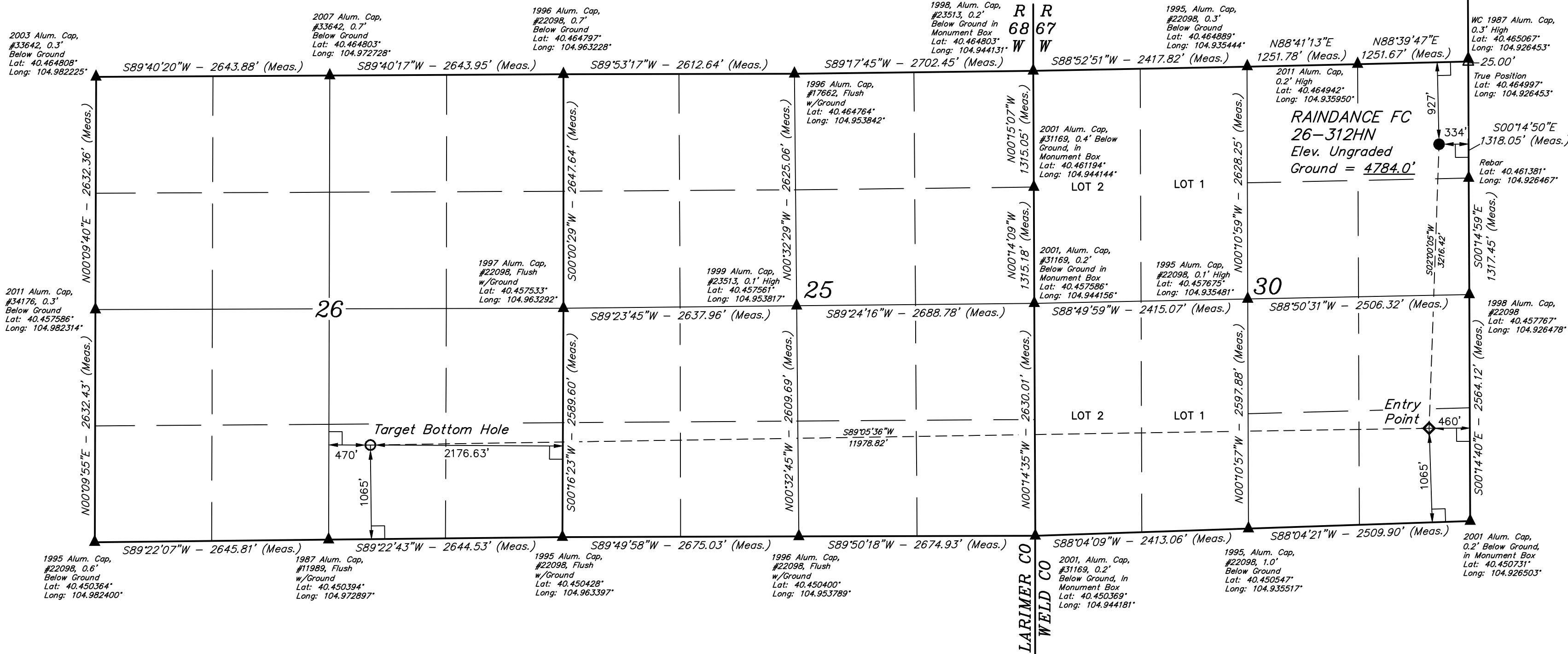
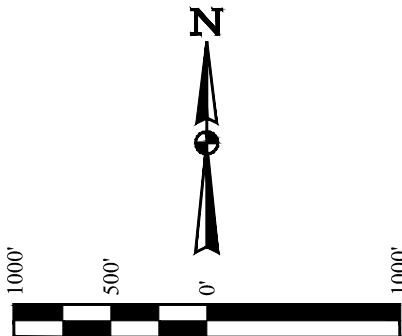


T6N, R67W, 6th P.M.

GREAT WESTERN OPERATING COMPANY

RAINDANCE FC 26-312HN  
NE 1/4 NE 1/4, SECTION 30, T6N, R67W, 6th P.M.  
WELD COUNTY, COLORADO

BASIS OF BEARINGS  
BASIS OF ELEVATION  
USGS COOPERATIVE BASE NETWORK CONTROL STATION,  
DESIGNATION "VERMILYEA". NGS DATA SHEET LISTS THE  
NAVD 88 ELEVATION AS BEING 5026 FEET.



LEGEND:  
— = 90° SYMBOL  
● = PROPOSED WELLHEAD.  
○ = TARGET BOTTOM HOLE.  
◇ = ENTRY POINT.  
▲ = SECTION CORNERS LOCATED. (NAD 83)  
△ = SECTION CORNERS RE-ESTABLISHED.  
(Not Set on Ground.) (NAD 83)

NAD 83 (SURFACE LOCATION)	NAD 83 (ENTRY POINT)	NAD 83 (TARGET BOTTOM HOLE)
LATITUDE = 40°27'44.78" (40.462439)	LATITUDE = 40°27'13.03" (40.453619)	LATITUDE = 40°27'11.97" (40.453325)
LONGITUDE = 104°55'39.58" (104.927661)	LONGITUDE = 104°55'41.32" (104.928144)	LONGITUDE = 104°58'16.23" (104.971175)
NAD 27 (SURFACE LOCATION)	NAD 27 (ENTRY POINT)	NAD 27 (TARGET BOTTOM HOLE)
LATITUDE = 40°27'44.84" (40.462457)	LATITUDE = 40°27'13.10" (40.453639)	LATITUDE = 40°27'12.03" (40.453342)
LONGITUDE = 104°55'37.67" (104.927131)	LONGITUDE = 104°55'39.42" (104.927617)	LONGITUDE = 104°58'14.31" (104.970642)

PDOP = 1.4

UINTEAH  
ENGINEERING & LAND SURVEYING

UELS, LLC  
Corporate Office \* 85 South 200 East  
Vernal, UT 84078 \* (435) 789-1017

SURVEYED BY CHAD MEIERS, J.C.  
DRAWN BY K.B.

10-14-16  
02-25-16

SCALE  
1" = 1000'

WELL LOCATION PLAT

CERTIFICATION  
THIS IS TO CERTIFY THAT THE ABOVE PLAT HAS BEEN PREPARED  
NOTES OF ACTUAL SURVEYS MADE BY ME OR UNDER MY SUPERVISION  
AND THAT THE SAME ARE TRUE AND CORRECT TO THE BEST OF MY  
KNOWLEDGE AND BELIEF.

REGISTERED LAND SURVEYOR  
REGISTRATION NO. 28285  
STATE OF COLORADO  
JANUARY 1, 2018

REV: 4 11-13-18 A.P. (SHL MOVE)