

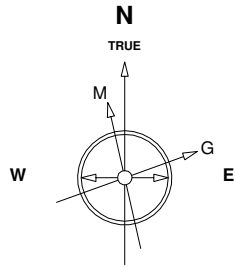
Great Western Operating Company, LLC

Location Colorado
Field Wattenburg
Installation Raindance

Slot Slot E-24 - Raindance FC 26-112HNX
Well Raindance FC 26-112HNX
Wellbore Raindance FC 26-112HNX (PWB)

Created by admin
Date plotted 18-Nov-2016

Plot reference is Raindance FC 26-112HNX (PWB).
Ref wellpath is Raindance FC 26-112HNX (PWP#1).
Coordinates are in Feet reference Slot E-24 - Raindance FC 26-112HNX.
True Vertical Depths are reference Rig Datum.
Measured Depths are reference Rig Datum.
Rig Datum: Planned Datum #1
Rig Datum to Mean Sea Level: 4809.00 ft.
Plot North is aligned to TRUE North.



Scale 1 cm = 500 ft

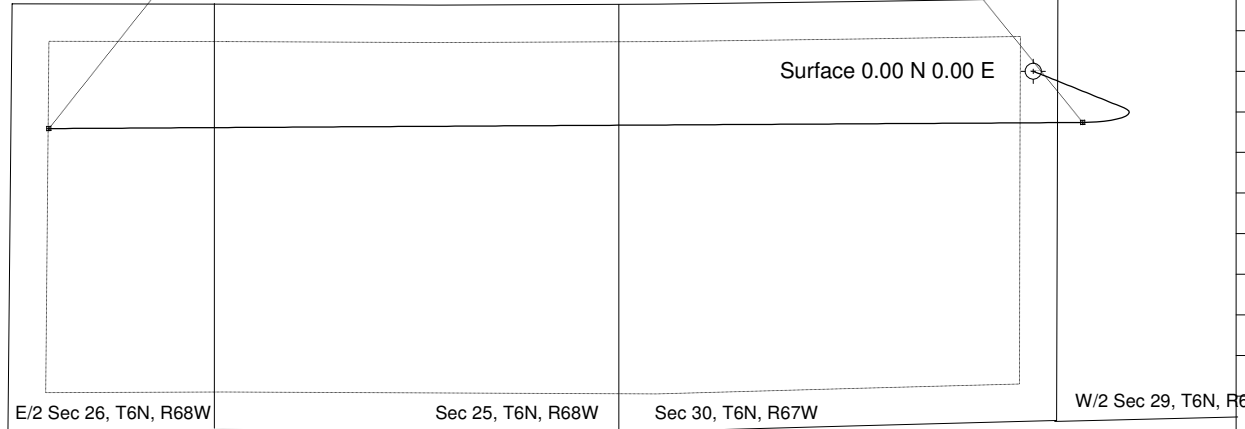
East (Feet) ->

-15000 -14000 -13000 -12000 -11000 -10000 -9000 -8000 -7000 -6000 -5000 -4000 -3000 -2000 -1000 0 1000 2000

BHL - 20,200 / 6817 MD/TVD, 1536 FNL, 2177.54 FEL Sec 26

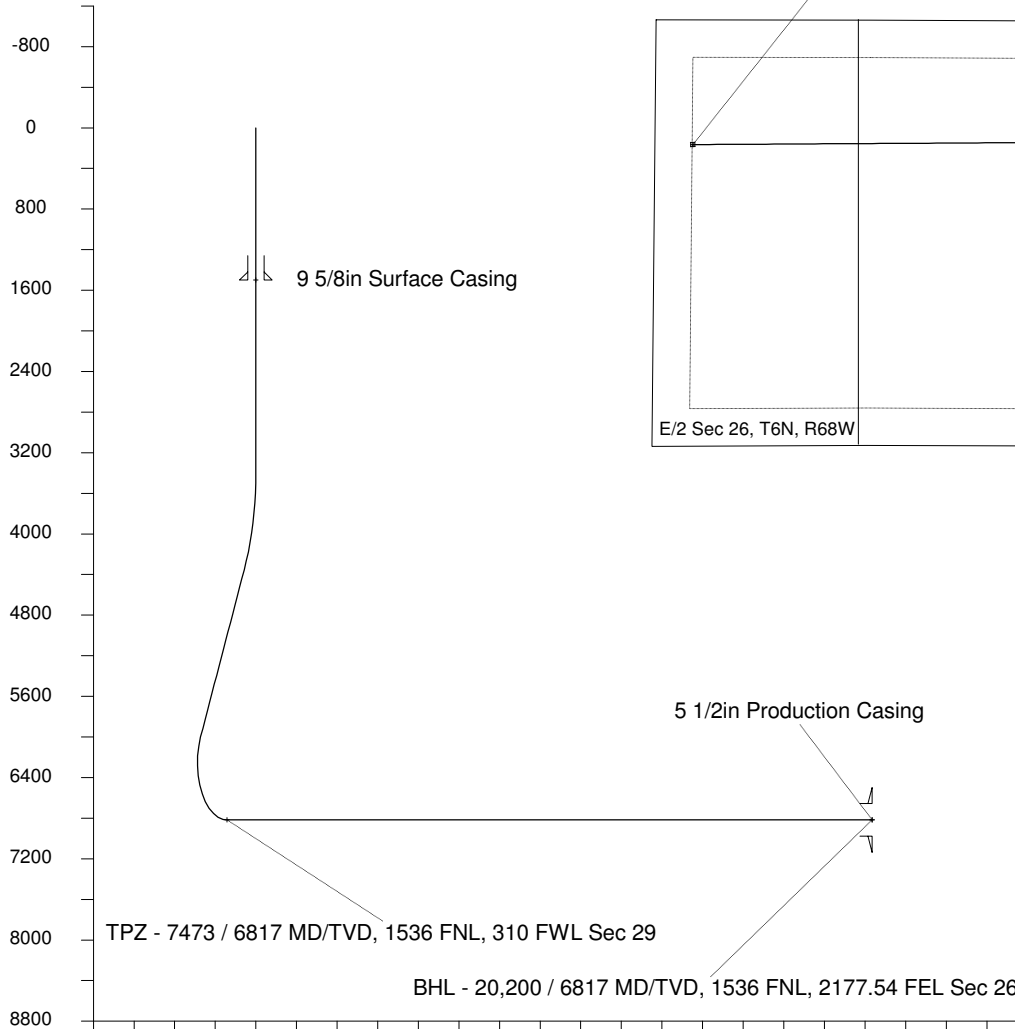
TPZ - 7473 / 6817 MD/TVD, 1536 FNL, 310 FWL Sec 29

Surface 0.00 N 0.00 E



Scale 1 cm = 400 ft

<- True Vertical Depth (Feet)



Scale 1 cm = 800 ft

Vertical Section (Feet) ->

Azimuth 266.66 with reference 0.00 N, 0.00 E from Slot E-24 - Raindance FC 26-112HNX

WELL PROFILE DATA

Point	MD	Inc	Azi	TVD	North	East	deg/100ft	V. Sect
Tie on	0.00	0.00	0.00	0.00	S 0.00	W 0.00		-0.00
KOP	3402.00	0.00	111.92	3402.00	S 0.00	W 0.00	0.00	-0.00
End of Build	4402.06	30.00	111.92	4356.98	S 95.53	E 237.40	9.84	-231.44
End of Hold	6297.26	30.00	111.92	5998.25	S 449.30	E 1116.54	0.00	-1088.50
Target TPZ - ...Sec 29	7472.92	90.00	269.66	6817.00	S 631.35	E 609.69	32.81	-571.92
T.D. & Target BHL... 26	20200.19	90.00	269.66	6817.00	S 706.35	W 12117.36	0.00	12137.93

Header Information	measured depth (ft)	inclination (°)	azimuth (°)	true vertical depth (ft)	northing +N/-S (ft)	easting +E/-W (ft)
Operator Name	0	0.00	0.00	0	0.00	0.00
Great Western Oil & Gas Company LLC	100	0.00	0.00	100	0.00	0.00
Operator Number	200	0.00	0.00	200	0.00	0.00
10110	300	0.00	0.00	300	0.00	0.00
Well Name and Number	400	0.00	0.00	400	0.00	0.00
Raindance FC 26-112HNX	500	0.00	0.00	500	0.00	0.00
API Number (if available)	600	0.00	0.00	600	0.00	0.00
	700	0.00	0.00	700	0.00	0.00
Location: QQ SEC TWP RGE	800	0.00	0.00	800	0.00	0.00
NENE 30 6N 67W	900	0.00	0.00	900	0.00	0.00
Citing Type: Planned or Actual	1000	0.00	0.00	1000	0.00	0.00
Planned	1100	0.00	0.00	1100	0.00	0.00
Deviation Indicator	1200	0.00	0.00	1200	0.00	0.00
Horizontal ▼	1300	0.00	0.00	1300	0.00	0.00
North Reference	1400	0.00	0.00	1400	0.00	0.00
True ▼	1500	0.00	0.00	1500	0.00	0.00
Grid Type	1600	0.00	0.00	1600	0.00	0.00
▼	1700	0.00	0.00	1700	0.00	0.00
	1800	0.00	0.00	1800	0.00	0.00
	1900	0.00	0.00	1900	0.00	0.00
	2000	0.00	0.00	2000	0.00	0.00
	2100	0.00	0.00	2100	0.00	0.00
	2200	0.00	0.00	2200	0.00	0.00
	2300	0.00	0.00	2300	0.00	0.00
	2400	0.00	0.00	2400	0.00	0.00
	2500	0.00	0.00	2500	0.00	0.00
	2600	0.00	0.00	2600	0.00	0.00
	2700	0.00	0.00	2700	0.00	0.00
	2800	0.00	0.00	2800	0.00	0.00

2900	0.00	0.00	2900	0.00	0.00
3000	0.00	0.00	3000	0.00	0.00
3100	0.00	0.00	3100	0.00	0.00
3200	0.00	0.00	3200	0.00	0.00
3300	0.00	0.00	3300	0.00	0.00
3400	0.00	0.00	3400	0.00	0.00
3500	2.94	111.92	3499.96	-0.94	2.33
3600	5.94	111.92	3599.65	-3.83	9.51
3700	8.94	111.92	3698.79	-8.66	21.52
3800	11.94	111.92	3797.13	-15.43	38.33
3900	14.94	111.92	3894.38	-24.10	59.89
4000	17.94	111.92	3990.28	-34.67	86.15
4100	20.94	111.92	4084.56	-47.09	117.02
4200	23.94	111.92	4176.98	-61.34	152.43
4300	26.94	111.92	4267.28	-77.37	192.27
4400	29.94	111.92	4355.2	-95.15	236.45
4500	30.00	111.92	4441.8	-113.81	282.83
4600	30.00	111.92	4528.4	-132.48	329.22
4700	30.00	111.92	4615	-151.15	375.61
4800	30.00	111.92	4701.6	-169.81	422.00
4900	30.00	111.92	4788.2	-188.48	468.39
5000	30.00	111.92	4874.8	-207.15	514.77
5100	30.00	111.92	4961.4	-225.81	561.16
5200	30.00	111.92	5048.01	-244.48	607.55
5300	30.00	111.92	5134.61	-263.15	653.94
5400	30.00	111.92	5221.21	-281.81	700.32
5500	30.00	111.92	5307.81	-300.48	746.71
5600	30.00	111.92	5394.41	-319.15	793.10
5700	30.00	111.92	5481.01	-337.81	839.49
5800	30.00	111.92	5567.61	-356.48	885.87
5900	30.00	111.92	5654.21	-375.15	932.26
6000	30.00	111.92	5740.81	-393.81	978.65
6100	30.00	111.92	5827.42	-412.48	1025.04
6200	30.00	111.92	5914.02	-431.15	1071.43

6300	29.75	112.16	6000.62	-449.81	1117.81
6400	21.13	124.12	6090.9	-469.33	1155.81
6500	14.30	148.74	6186.23	-490.06	1177.19
6600	12.63	192.14	6283.71	-511.35	1181.31
6700	17.64	226.21	6380.4	-532.58	1168.04
6800	25.69	242.62	6473.34	-553.08	1137.79
6900	34.71	251.26	6559.72	-572.25	1091.46
7000	44.12	256.63	6636.91	-589.49	1030.47
7100	53.71	260.42	6702.57	-604.28	956.68
7200	63.39	263.37	6754.69	-616.18	872.32
7300	73.12	265.86	6791.7	-624.82	779.97
7400	82.88	268.10	6812.47	-629.93	682.41
7472.92	90.00	269.66	6817	-631.35	609.69
7500	90.00	269.66	6817	-631.51	582.61
7600	90.00	269.66	6817	-632.10	482.62
7700	90.00	269.66	6817	-632.69	382.62
7800	90.00	269.66	6817	-633.28	282.62
7900	90.00	269.66	6817	-633.87	182.62
8000	90.00	269.66	6817	-634.46	82.62
8100	90.00	269.66	6817	-635.05	-17.37
8200	90.00	269.66	6817	-635.64	-117.37
8300	90.00	269.66	6817	-636.23	-217.37
8400	90.00	269.66	6817	-636.81	-317.37
8500	90.00	269.66	6817	-637.40	-417.37
8600	90.00	269.66	6817	-637.99	-517.37
8700	90.00	269.66	6817	-638.58	-617.36
8800	90.00	269.66	6817	-639.17	-717.36
8900	90.00	269.66	6817	-639.76	-817.36
9000	90.00	269.66	6817	-640.35	-917.36
9100	90.00	269.66	6817	-640.94	-1017.36
9200	90.00	269.66	6817	-641.53	-1117.36
9300	90.00	269.66	6817	-642.12	-1217.35
9400	90.00	269.66	6817	-642.71	-1317.35
9500	90.00	269.66	6817	-643.30	-1417.35

9600	90.00	269.66	6817	-643.89	-1517.35
9700	90.00	269.66	6817	-644.48	-1617.35
9800	90.00	269.66	6817	-645.06	-1717.35
9900	90.00	269.66	6817	-645.65	-1817.34
10000	90.00	269.66	6817	-646.24	-1917.34
10100	90.00	269.66	6817	-646.83	-2017.34
10200	90.00	269.66	6817	-647.42	-2117.34
10300	90.00	269.66	6817	-648.01	-2217.34
10400	90.00	269.66	6817	-648.60	-2317.34
10500	90.00	269.66	6817	-649.19	-2417.33
10600	90.00	269.66	6817	-649.78	-2517.33
10700	90.00	269.66	6817	-650.37	-2617.33
10800	90.00	269.66	6817	-650.96	-2717.33
10900	90.00	269.66	6817	-651.55	-2817.33
11000	90.00	269.66	6817	-652.14	-2917.32
11100	90.00	269.66	6817	-652.72	-3017.32
11200	90.00	269.66	6817	-653.31	-3117.32
11300	90.00	269.66	6817	-653.90	-3217.32
11400	90.00	269.66	6817	-654.49	-3317.32
11500	90.00	269.66	6817	-655.08	-3417.32
11600	90.00	269.66	6817	-655.67	-3517.31
11700	90.00	269.66	6817	-656.26	-3617.31
11800	90.00	269.66	6817	-656.85	-3717.31
11900	90.00	269.66	6817	-657.44	-3817.31
12000	90.00	269.66	6817	-658.03	-3917.31
12100	90.00	269.66	6817	-658.62	-4017.31
12200	90.00	269.66	6817	-659.21	-4117.30
12300	90.00	269.66	6817	-659.80	-4217.30
12400	90.00	269.66	6817	-660.39	-4317.30
12500	90.00	269.66	6817	-660.97	-4417.30
12600	90.00	269.66	6817	-661.56	-4517.30
12700	90.00	269.66	6817	-662.15	-4617.30
12800	90.00	269.66	6817	-662.74	-4717.29
12900	90.00	269.66	6817	-663.33	-4817.29

13000	90.00	269.66	6817	-663.92	-4917.29
13100	90.00	269.66	6817	-664.51	-5017.29
13200	90.00	269.66	6817	-665.10	-5117.29
13300	90.00	269.66	6817	-665.69	-5217.28
13400	90.00	269.66	6817	-666.28	-5317.28
13500	90.00	269.66	6817	-666.87	-5417.28
13600	90.00	269.66	6817	-667.46	-5517.28
13700	90.00	269.66	6817	-668.05	-5617.28
13800	90.00	269.66	6817	-668.63	-5717.28
13900	90.00	269.66	6817	-669.22	-5817.27
14000	90.00	269.66	6817	-669.81	-5917.27
14100	90.00	269.66	6817	-670.40	-6017.27
14200	90.00	269.66	6817	-670.99	-6117.27
14300	90.00	269.66	6817	-671.58	-6217.27
14400	90.00	269.66	6817	-672.17	-6317.27
14500	90.00	269.66	6817	-672.76	-6417.26
14600	90.00	269.66	6817	-673.35	-6517.26
14700	90.00	269.66	6817	-673.94	-6617.26
14800	90.00	269.66	6817	-674.53	-6717.26
14900	90.00	269.66	6817	-675.12	-6817.26
15000	90.00	269.66	6817	-675.71	-6917.26
15100	90.00	269.66	6817	-676.29	-7017.25
15200	90.00	269.66	6817	-676.88	-7117.25
15300	90.00	269.66	6817	-677.47	-7217.25
15400	90.00	269.66	6817	-678.06	-7317.25
15500	90.00	269.66	6817	-678.65	-7417.25
15600	90.00	269.66	6817	-679.24	-7517.24
15700	90.00	269.66	6817	-679.83	-7617.24
15800	90.00	269.66	6817	-680.42	-7717.24
15900	90.00	269.66	6817	-681.01	-7817.24
16000	90.00	269.66	6817	-681.60	-7917.24
16100	90.00	269.66	6817	-682.19	-8017.24
16200	90.00	269.66	6817	-682.78	-8117.23
16300	90.00	269.66	6817	-683.37	-8217.23

16400	90.00	269.66	6817	-683.96	-8317.23
16500	90.00	269.66	6817	-684.54	-8417.23
16600	90.00	269.66	6817	-685.13	-8517.23
16700	90.00	269.66	6817	-685.72	-8617.23
16800	90.00	269.66	6817	-686.31	-8717.22
16900	90.00	269.66	6817	-686.90	-8817.22
17000	90.00	269.66	6817	-687.49	-8917.22
17100	90.00	269.66	6817	-688.08	-9017.22
17200	90.00	269.66	6817	-688.67	-9117.22
17300	90.00	269.66	6817	-689.26	-9217.22
17400	90.00	269.66	6817	-689.85	-9317.21
17500	90.00	269.66	6817	-690.44	-9417.21
17600	90.00	269.66	6817	-691.03	-9517.21
17700	90.00	269.66	6817	-691.62	-9617.21
17800	90.00	269.66	6817	-692.20	-9717.21
17900	90.00	269.66	6817	-692.79	-9817.20
18000	90.00	269.66	6817	-693.38	-9917.20
18100	90.00	269.66	6817	-693.97	-10017.20
18200	90.00	269.66	6817	-694.56	-10117.20
18300	90.00	269.66	6817	-695.15	-10217.20
18400	90.00	269.66	6817	-695.74	-10317.20
18500	90.00	269.66	6817	-696.33	-10417.19
18600	90.00	269.66	6817	-696.92	-10517.19
18700	90.00	269.66	6817	-697.51	-10617.19
18800	90.00	269.66	6817	-698.10	-10717.19
18900	90.00	269.66	6817	-698.69	-10817.19
19000	90.00	269.66	6817	-699.28	-10917.19
19100	90.00	269.66	6817	-699.87	-11017.18
19200	90.00	269.66	6817	-700.45	-11117.18
19300	90.00	269.66	6817	-701.04	-11217.18
19400	90.00	269.66	6817	-701.63	-11317.18
19500	90.00	269.66	6817	-702.22	-11417.18
19600	90.00	269.66	6817	-702.81	-11517.18
19700	90.00	269.66	6817	-703.40	-11617.17

19800	90.00	269.66	6817	-703.99	-11717.17
19900	90.00	269.66	6817	-704.58	-11817.17
20000	90.00	269.66	6817	-705.17	-11917.17
20100	90.00	269.66	6817	-705.76	-12017.17
20200	90.00	269.66	6817	-706.35	-12117.16
20200.19	90.00	269.66	6817	-706.35	-12117.36