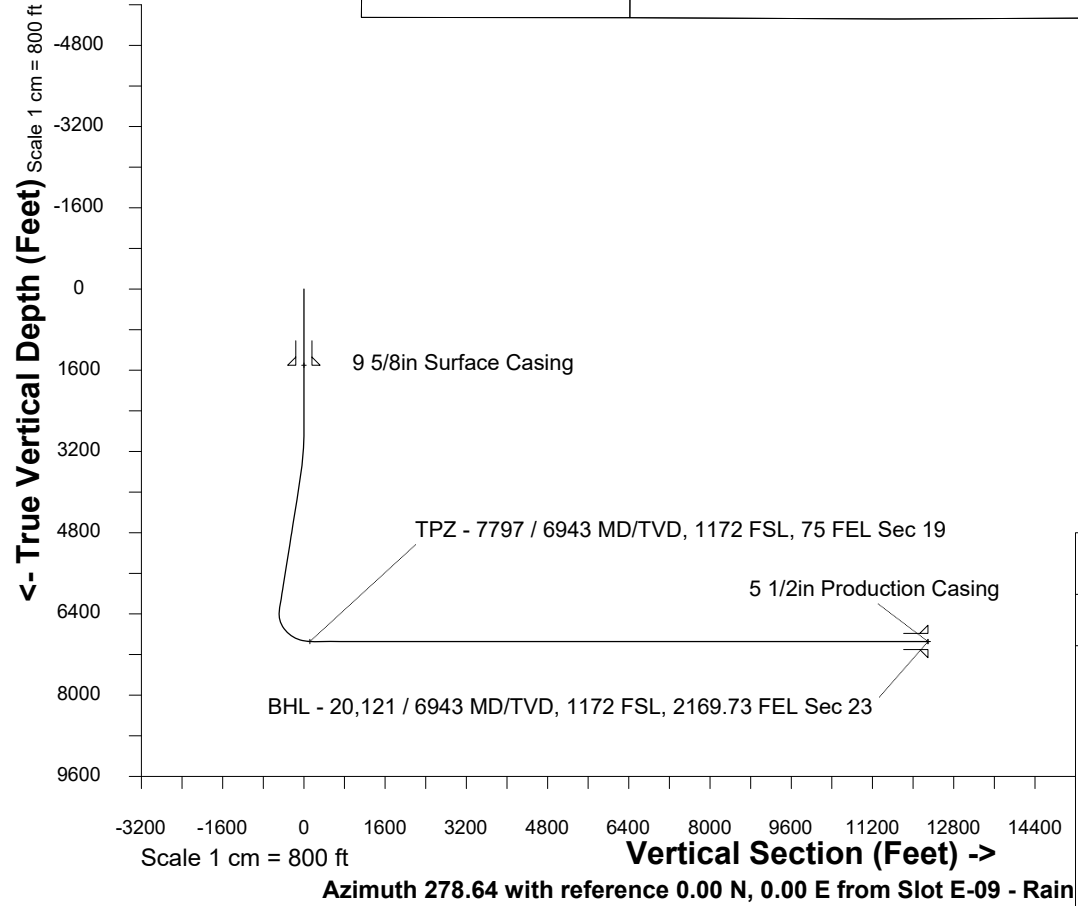
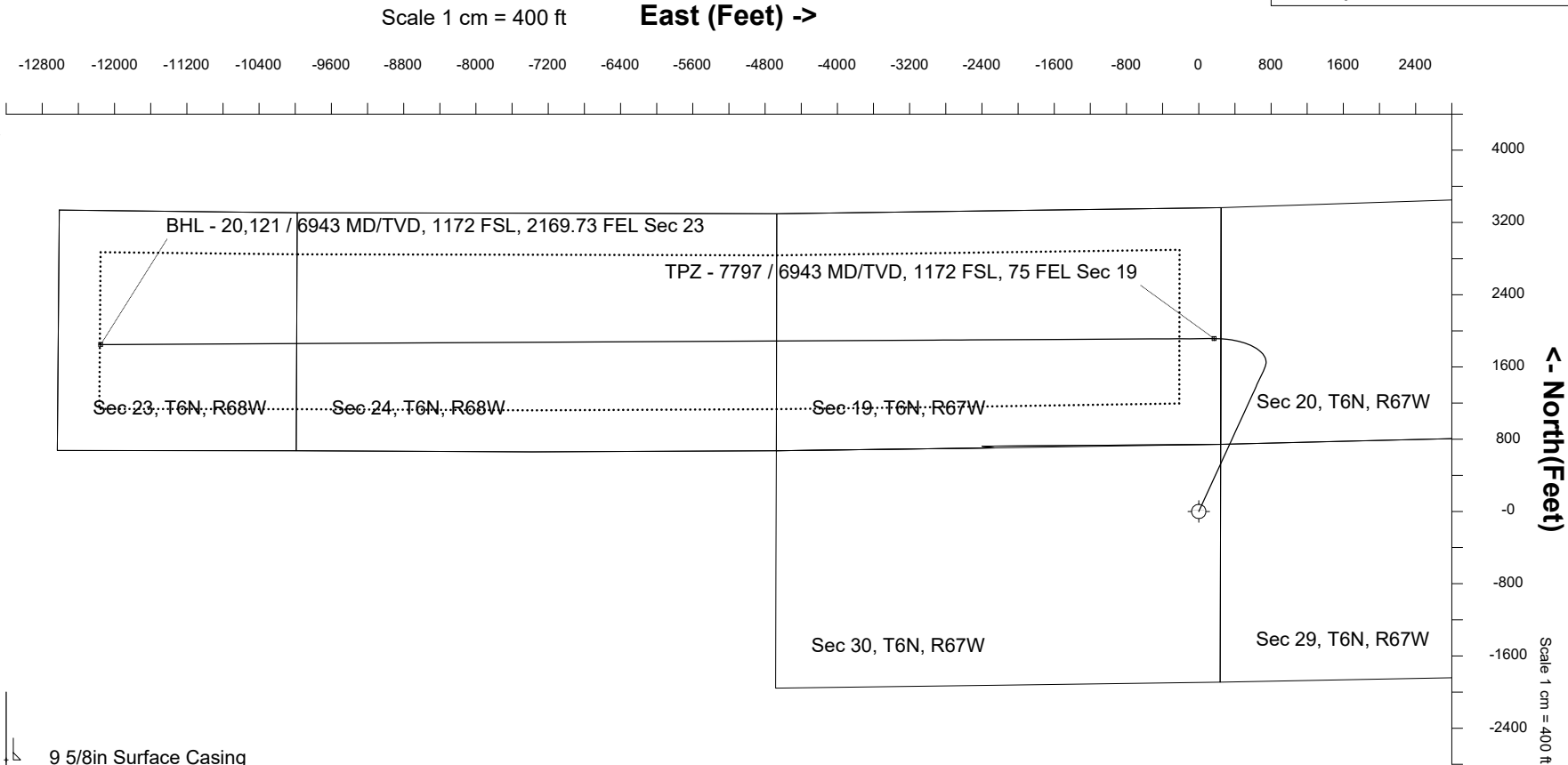
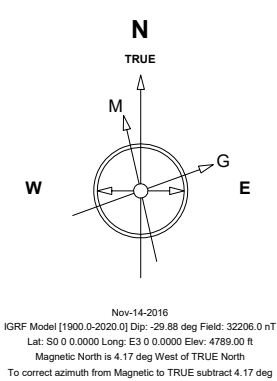


Great Western Operating Company, LLC							
Location	Colorado			Slot	Slot E-09 - Raindance FC 23-312HN		
Field	Wattenburg			Well	Raindance FC 23-312HN		
Installation	Raindance			Wellbore	Raindance FC 23-312HN (PWB)		

Created by	admin
Date plotted	12-Dec-2018
Plot reference is Raindance FC 23-312HN (PWB).	
Ref wellpath is Raindance FC 23-312HN (PWP#1).	
Coordinates are in Feet reference Slot E-09 - Raindance FC 23-312HN.	
True Vertical Depths are reference Rig Datum.	
Measured Depths are reference Rig Datum.	
Rig Datum: Planned Datum #1	
Rig Datum to Mean Sea Level: 4809.00 ft.	
Plot North is aligned to TRUE North.	



WELL PROFILE DATA								
Point	MD	Inc	Azi	TVD	North	East	deg/100ft	V. Sect
Tie on	0.00	0.00	0.00	0.00	S 0.00	W 0.00		0.00
KOP	2776.00	0.00	24.66	2776.00	S 0.00	W 0.00	0.00	0.00
End of Build	3776.02	30.00	24.66	3730.94	N 232.55	E 106.75	3.00	-70.59
End of Hold	6775.12	30.00	24.66	6328.23	N 1595.39	E 732.35	0.00	-484.31
Target TPZ - ...Sec 19	7796.96	90.00	269.69	6943.00	N 1914.12	E 170.56	10.00	119.00
T.D. & Target BHL... 23	20121.02	90.00	269.69	6943.00	N 1847.16	W 12153.31	0.00	12292.89

Header Information	measured depth (ft)	inclination (°)	azimuth (°)	true vertical depth (ft)	northing +N/-S (ft)	easting +E/-W (ft)
Operator Name	0	0.00	0.00	0	0.00	0.00
Great Western Oil & Gas Company LLC	100	0.00	0.00	100	0.00	0.00
Operator Number	200	0.00	0.00	200	0.00	0.00
10110	300	0.00	0.00	300	0.00	0.00
Well Name and Number	400	0.00	0.00	400	0.00	0.00
Raindance FC 23-312HN	500	0.00	0.00	500	0.00	0.00
API Number (if available)	600	0.00	0.00	600	0.00	0.00
	700	0.00	0.00	700	0.00	0.00
Location: QQ SEC TWP RGE	800	0.00	0.00	800	0.00	0.00
NENE 30 6N 67W	900	0.00	0.00	900	0.00	0.00
Citing Type: Planned or Actual	1000	0.00	0.00	1000	0.00	0.00
Planned	1100	0.00	0.00	1100	0.00	0.00
Deviation Indicator	1200	0.00	0.00	1200	0.00	0.00
Horizontal ▼	1300	0.00	0.00	1300	0.00	0.00
North Reference	1400	0.00	0.00	1400	0.00	0.00
True ▼	1500	0.00	0.00	1500	0.00	0.00
Grid Type	1600	0.00	0.00	1600	0.00	0.00
▼	1700	0.00	0.00	1700	0.00	0.00
	1800	0.00	0.00	1800	0.00	0.00
	1900	0.00	0.00	1900	0.00	0.00
	2000	0.00	0.00	2000	0.00	0.00
	2100	0.00	0.00	2100	0.00	0.00
	2200	0.00	0.00	2200	0.00	0.00
	2300	0.00	0.00	2300	0.00	0.00
	2400	0.00	0.00	2400	0.00	0.00
	2500	0.00	0.00	2500	0.00	0.00
	2600	0.00	0.00	2600	0.00	0.00
	2700	0.00	0.00	2700	0.00	0.00
	2800	0.72	24.66	2800	0.14	0.06

2900	3.72	24.66	2900	3.66	1.68
3000	6.72	24.66	2999	11.92	5.47
3100	9.72	24.66	3098	24.92	11.44
3200	12.72	24.66	3197	42.60	19.55
3300	15.72	24.66	3293	64.92	29.80
3400	18.72	24.66	3389	91.82	42.15
3500	21.72	24.66	3483	123.23	56.57
3600	24.72	24.66	3575	159.06	73.01
3700	27.72	24.66	3664	199.21	91.44
3800	30.00	24.66	3752	243.45	111.75
3900	30.00	24.66	3838	288.89	132.61
4000	30.00	24.66	3925	334.33	153.47
4100	30.00	24.66	4012	379.77	174.33
4200	30.00	24.66	4098	425.22	195.19
4300	30.00	24.66	4185	470.66	216.05
4400	30.00	24.66	4271	516.10	236.91
4500	30.00	24.66	4358	561.54	257.77
4600	30.00	24.66	4445	606.98	278.63
4700	30.00	24.66	4531	652.42	299.49
4800	30.00	24.66	4618	697.87	320.35
4900	30.00	24.66	4704	743.31	341.21
5000	30.00	24.66	4791	788.75	362.07
5100	30.00	24.66	4878	834.19	382.93
5200	30.00	24.66	4964	879.63	403.79
5300	30.00	24.66	5051	925.07	424.65
5400	30.00	24.66	5137	970.52	445.51
5500	30.00	24.66	5224	1015.96	466.37
5600	30.00	24.66	5311	1061.40	487.23
5700	30.00	24.66	5397	1106.84	508.09
5800	30.00	24.66	5484	1152.28	528.95
5900	30.00	24.66	5570	1197.72	549.81
6000	30.00	24.66	5657	1243.17	570.67
6100	30.00	24.66	5744	1288.61	591.52
6200	30.00	24.66	5830	1334.05	612.38

6300	30.00	24.66	5917	1379.49	633.24
6400	30.00	24.66	6003	1424.93	654.10
6500	30.00	24.66	6090	1470.38	674.96
6600	30.00	24.66	6177	1515.82	695.82
6700	30.00	24.66	6263	1561.26	716.68
6800	29.15	19.92	6350	1606.75	737.01
6900	27.63	359.03	6438	1652.95	744.94
7000	29.34	338.28	6526	1699.01	735.46
7100	33.81	321.10	6612	1743.54	708.85
7200	40.10	308.12	6692	1785.18	665.94
7300	47.49	298.36	6764	1822.66	608.02
7400	55.54	290.74	6826	1854.85	536.85
7500	63.97	284.50	6876	1880.77	454.59
7600	72.63	279.11	6913	1899.62	363.75
7700	81.42	274.22	6936	1910.85	267.08
7800	90.00	269.69	6943	1914.10	167.53
7900	90.00	269.69	6943	1913.56	67.53
8000	90.00	269.69	6943	1913.02	-32.47
8100	90.00	269.69	6943	1912.47	-132.47
8200	90.00	269.69	6943	1911.93	-232.47
8300	90.00	269.69	6943	1911.39	-332.47
8400	90.00	269.69	6943	1910.84	-432.46
8500	90.00	269.69	6943	1910.30	-532.46
8600	90.00	269.69	6943	1909.76	-632.46
8700	90.00	269.69	6943	1909.21	-732.46
8800	90.00	269.69	6943	1908.67	-832.46
8900	90.00	269.69	6943	1908.13	-932.46
9000	90.00	269.69	6943	1907.58	-1032.46
9100	90.00	269.69	6943	1907.04	-1132.45
9200	90.00	269.69	6943	1906.50	-1232.45
9300	90.00	269.69	6943	1905.95	-1332.45
9400	90.00	269.69	6943	1905.41	-1432.45
9500	90.00	269.69	6943	1904.87	-1532.45
9600	90.00	269.69	6943	1904.32	-1632.45

9700	90.00	269.69	6943	1903.78	-1732.45
9800	90.00	269.69	6943	1903.24	-1832.44
9900	90.00	269.69	6943	1902.69	-1932.44
10000	90.00	269.69	6943	1902.15	-2032.44
10100	90.00	269.69	6943	1901.61	-2132.44
10200	90.00	269.69	6943	1901.06	-2232.44
10300	90.00	269.69	6943	1900.52	-2332.44
10400	90.00	269.69	6943	1899.98	-2432.44
10500	90.00	269.69	6943	1899.43	-2532.43
10600	90.00	269.69	6943	1898.89	-2632.43
10700	90.00	269.69	6943	1898.35	-2732.43
10800	90.00	269.69	6943	1897.80	-2832.43
10900	90.00	269.69	6943	1897.26	-2932.43
11000	90.00	269.69	6943	1896.72	-3032.43
11100	90.00	269.69	6943	1896.17	-3132.42
11200	90.00	269.69	6943	1895.63	-3232.42
11300	90.00	269.69	6943	1895.09	-3332.42
11400	90.00	269.69	6943	1894.54	-3432.42
11500	90.00	269.69	6943	1894.00	-3532.42
11600	90.00	269.69	6943	1893.46	-3632.42
11700	90.00	269.69	6943	1892.91	-3732.42
11800	90.00	269.69	6943	1892.37	-3832.41
11900	90.00	269.69	6943	1891.83	-3932.41
12000	90.00	269.69	6943	1891.28	-4032.41
12100	90.00	269.69	6943	1890.74	-4132.41
12200	90.00	269.69	6943	1890.20	-4232.41
12300	90.00	269.69	6943	1889.65	-4332.41
12400	90.00	269.69	6943	1889.11	-4432.41
12500	90.00	269.69	6943	1888.57	-4532.40
12600	90.00	269.69	6943	1888.02	-4632.40
12700	90.00	269.69	6943	1887.48	-4732.40
12800	90.00	269.69	6943	1886.94	-4832.40
12900	90.00	269.69	6943	1886.39	-4932.40
13000	90.00	269.69	6943	1885.85	-5032.40

13100	90.00	269.69	6943	1885.31	-5132.40
13200	90.00	269.69	6943	1884.76	-5232.39
13300	90.00	269.69	6943	1884.22	-5332.39
13400	90.00	269.69	6943	1883.68	-5432.39
13500	90.00	269.69	6943	1883.13	-5532.39
13600	90.00	269.69	6943	1882.59	-5632.39
13700	90.00	269.69	6943	1882.05	-5732.39
13800	90.00	269.69	6943	1881.50	-5832.38
13900	90.00	269.69	6943	1880.96	-5932.38
14000	90.00	269.69	6943	1880.42	-6032.38
14100	90.00	269.69	6943	1879.87	-6132.38
14200	90.00	269.69	6943	1879.33	-6232.38
14300	90.00	269.69	6943	1878.79	-6332.38
14400	90.00	269.69	6943	1878.24	-6432.38
14500	90.00	269.69	6943	1877.70	-6532.37
14600	90.00	269.69	6943	1877.16	-6632.37
14700	90.00	269.69	6943	1876.61	-6732.37
14800	90.00	269.69	6943	1876.07	-6832.37
14900	90.00	269.69	6943	1875.53	-6932.37
15000	90.00	269.69	6943	1874.98	-7032.37
15100	90.00	269.69	6943	1874.44	-7132.37
15200	90.00	269.69	6943	1873.90	-7232.36
15300	90.00	269.69	6943	1873.35	-7332.36
15400	90.00	269.69	6943	1872.81	-7432.36
15500	90.00	269.69	6943	1872.27	-7532.36
15600	90.00	269.69	6943	1871.72	-7632.36
15700	90.00	269.69	6943	1871.18	-7732.36
15800	90.00	269.69	6943	1870.64	-7832.36
15900	90.00	269.69	6943	1870.09	-7932.35
16000	90.00	269.69	6943	1869.55	-8032.35
16100	90.00	269.69	6943	1869.01	-8132.35
16200	90.00	269.69	6943	1868.47	-8232.35
16300	90.00	269.69	6943	1867.92	-8332.35
16400	90.00	269.69	6943	1867.38	-8432.35

16500	90.00	269.69	6943	1866.84	-8532.35
16600	90.00	269.69	6943	1866.29	-8632.34
16700	90.00	269.69	6943	1865.75	-8732.34
16800	90.00	269.69	6943	1865.21	-8832.34
16900	90.00	269.69	6943	1864.66	-8932.34
17000	90.00	269.69	6943	1864.12	-9032.34
17100	90.00	269.69	6943	1863.58	-9132.34
17200	90.00	269.69	6943	1863.03	-9232.33
17300	90.00	269.69	6943	1862.49	-9332.33
17400	90.00	269.69	6943	1861.95	-9432.33
17500	90.00	269.69	6943	1861.40	-9532.33
17600	90.00	269.69	6943	1860.86	-9632.33
17700	90.00	269.69	6943	1860.32	-9732.33
17800	90.00	269.69	6943	1859.77	-9832.33
17900	90.00	269.69	6943	1859.23	-9932.32
18000	90.00	269.69	6943	1858.69	-10032.32
18100	90.00	269.69	6943	1858.14	-10132.32
18200	90.00	269.69	6943	1857.60	-10232.32
18300	90.00	269.69	6943	1857.06	-10332.32
18400	90.00	269.69	6943	1856.51	-10432.32
18500	90.00	269.69	6943	1855.97	-10532.32
18600	90.00	269.69	6943	1855.43	-10632.31
18700	90.00	269.69	6943	1854.88	-10732.31
18800	90.00	269.69	6943	1854.34	-10832.31
18900	90.00	269.69	6943	1853.80	-10932.31
19000	90.00	269.69	6943	1853.25	-11032.31
19100	90.00	269.69	6943	1852.71	-11132.31
19200	90.00	269.69	6943	1852.17	-11232.31
19300	90.00	269.69	6943	1851.62	-11332.30
19400	90.00	269.69	6943	1851.08	-11432.30
19500	90.00	269.69	6943	1850.54	-11532.30
19600	90.00	269.69	6943	1849.99	-11632.30
19700	90.00	269.69	6943	1849.45	-11732.30
19800	90.00	269.69	6943	1848.91	-11832.30

19900	90.00	269.69	6943	1848.36	-11932.29
20000	90.00	269.69	6943	1847.82	-12032.29
20100	90.00	269.69	6943	1847.28	-12132.29
20121	90.00	269.69	6943	1847.16	-12153.31