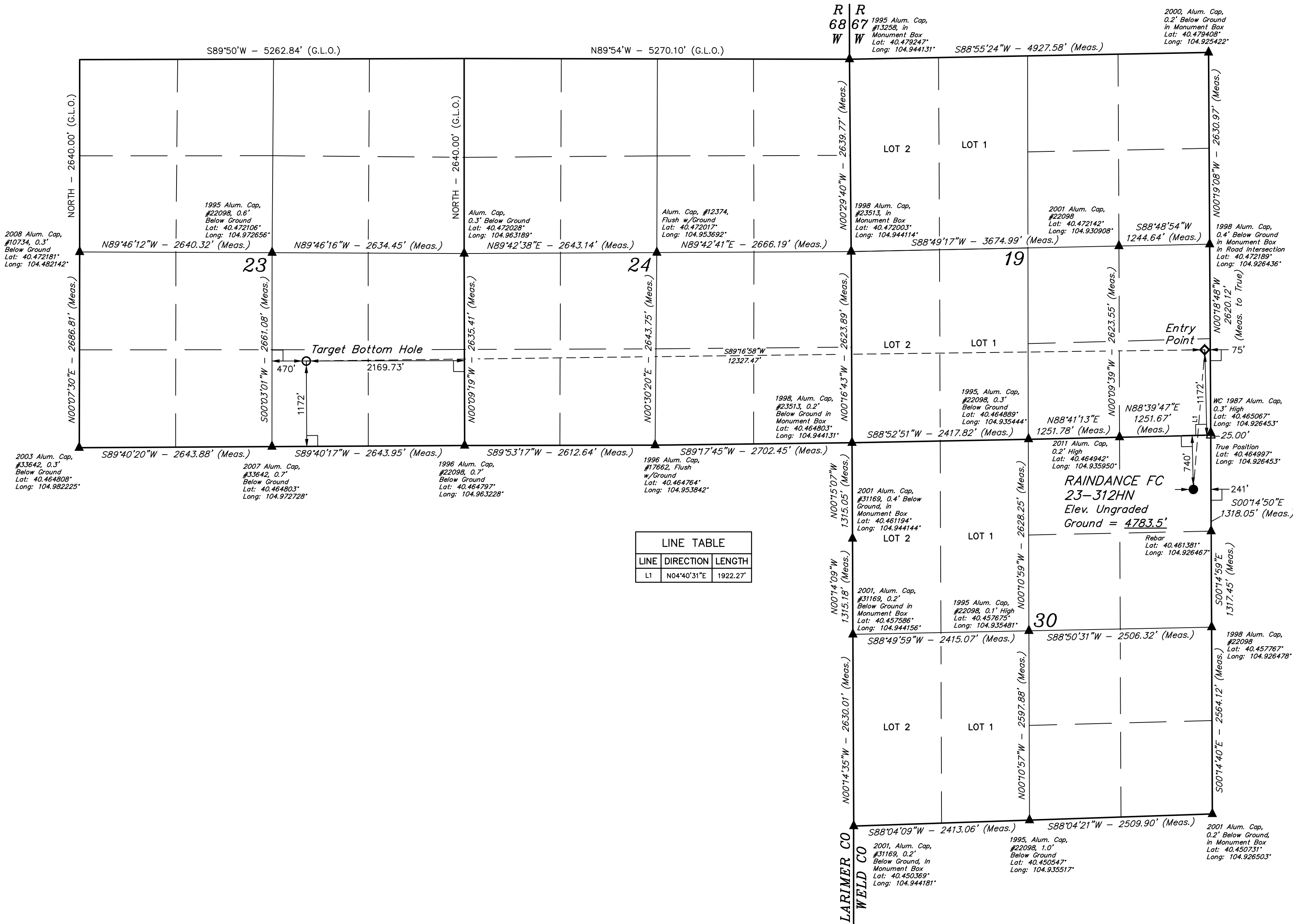
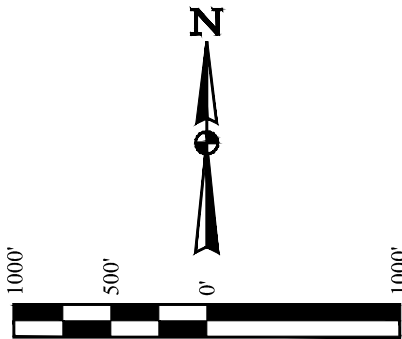


T6N, R67W, 6th P.M.

GREAT WESTERN OPERATING COMPANY

RAINDANCE FC 23-312HN  
NE 1/4 NE 1/4, SECTION 30, T6N, R67W, 6th P.M.  
WELD COUNTY, COLORADO

BASIS OF BEARINGS  
BASIS OF ELEVATION  
USGS COOPERATIVE BASE NETWORK CONTROL STATION,  
DESIGNATION "VERMILYEA". NGS DATA SHEET LISTS THE  
NAVD 88 ELEVATION AS BEING 5026 FEET.



LINE TABLE		
LINE	DIRECTION	LENGTH
L1	N04°40'31"E	1922.27'

LEGEND:  
— = 90° SYMBOL  
● = PROPOSED WELLHEAD.  
○ = TARGET BOTTOM HOLE.  
◆ = ENTRY POINT.  
▲ = SECTION CORNERS LOCATED. (NAD 83)  
△ = SECTION CORNERS RE-ESTABLISHED.  
(Not Set on Ground.) (NAD 83)

CERTIFICATE OF RECORD  
THIS IS TO CERTIFY THAT THE ABOVE DESCRIBED SURVEY AND NOTES OF ACTUAL SURVEYS MADE BY ME UNDER MY SUPERVISION AND THAT THE SAME ARE TRUE AND CORRECT TO THE BEST OF MY KNOWLEDGE AND BELIEF.

REGISTERED LAND SURVEYOR  
REGISTRATION NO. 28285  
STATE OF COLORADO  
JANUARY 18, 2018

REV: 4 11-13-18 A.P. (SHL MOVE)

PDOP = 1.3

NAD 83 (SURFACE LOCATION)	NAD 83 (ENTRY POINT)	NAD 83 (TARGET BOTTOM HOLE)
LATITUDE = 40°27'46.65" (40.462957)	LATITUDE = 40°28'05.56" (40.468211)	LATITUDE = 40°28'04.87" (40.468019)
LONGITUDE = 104°55'38.38" (104.927327)	LONGITUDE = 104°55'36.17" (104.926714)	LONGITUDE = 104°58'15.62" (104.971006)
NAD 27 (SURFACE LOCATION)	NAD 27 (ENTRY POINT)	NAD 27 (TARGET BOTTOM HOLE)
LATITUDE = 40°27'46.71" (40.462975)	LATITUDE = 40°28'05.63" (40.468231)	LATITUDE = 40°28'04.93" (40.468036)
LONGITUDE = 104°55'36.47" (104.926797)	LONGITUDE = 104°55'34.27" (104.926186)	LONGITUDE = 104°58'13.71" (104.970475)



UINTEAH  
ENGINEERING & LAND SURVEYING

CHAD MEIERS, J.C.  
K.B.

10-14-16  
02-25-16

SCALE  
1" = 1000'

WELL LOCATION PLAT

UELS, LLC  
Corporate Office \* 85 South 200 East  
Vernal, UT 84078 \* (435) 789-1017