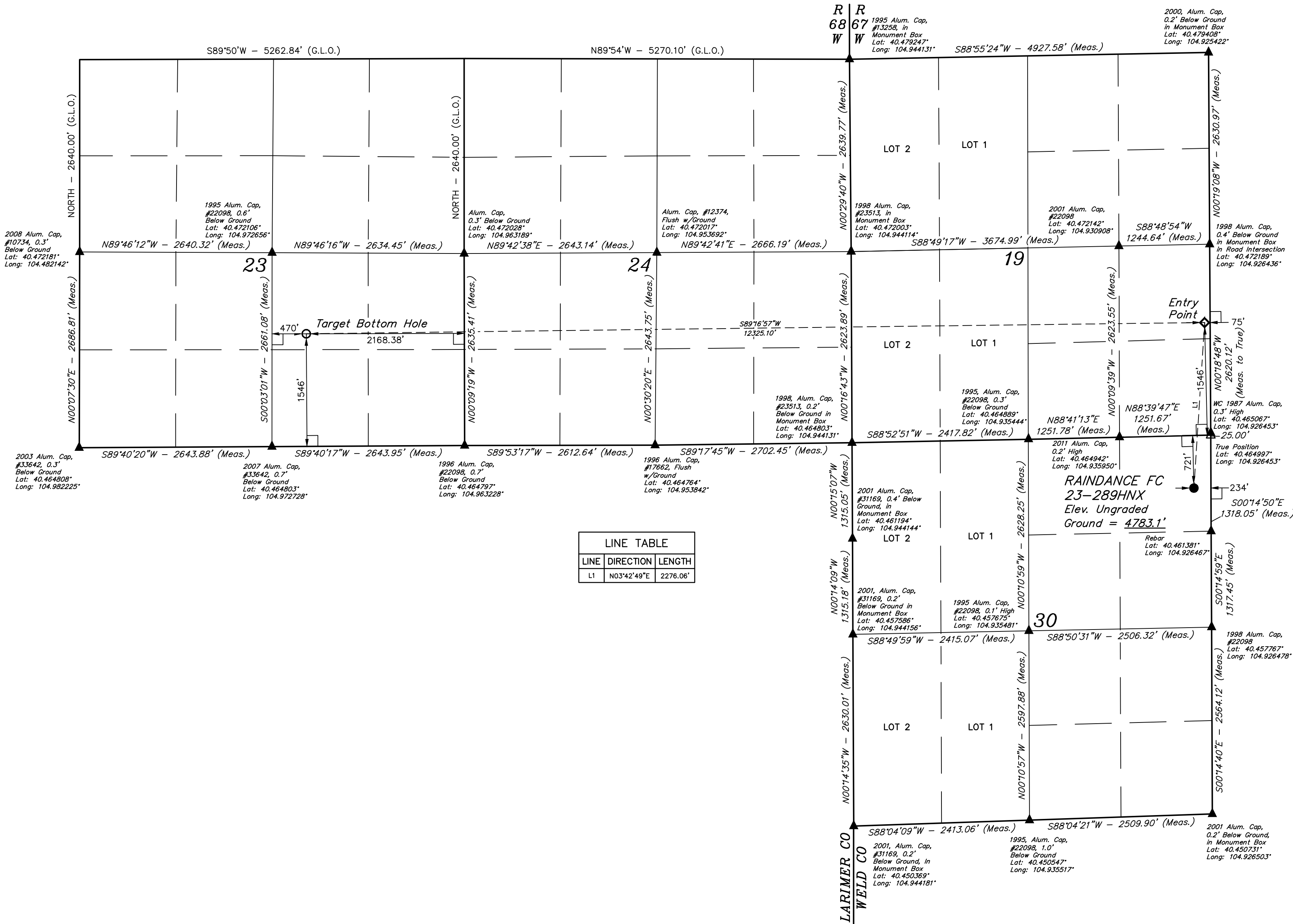
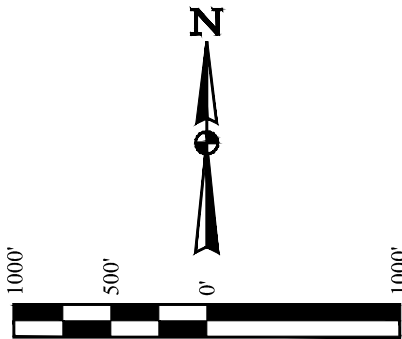


T6N, R67W, 6th P.M.

GREAT WESTERN OPERATING COMPANY

RAINANCE FC 23-289HNX
NE 1/4 NE 1/4, SECTION 30, T6N, R67W, 6th P.M.
WELD COUNTY, COLORADO

BASIS OF BEARINGS
BASIS OF ELEVATION
USGS COOPERATIVE BASE NETWORK CONTROL STATION,
DESIGNATION "VERMILYEA". NGS DATA SHEET LISTS THE
NAVD 88 ELEVATION AS BEING 5026 FEET.



LINE TABLE		
LINE	DIRECTION	LENGTH
L1	N03°42'49"E	2276.06'

LEGEND:
— = 90° SYMBOL
● = PROPOSED WELLHEAD.
○ = TARGET BOTTOM HOLE.
◆ = ENTRY POINT.
▲ = SECTION CORNERS LOCATED. (NAD 83)
△ = SECTION CORNERS RE-ESTABLISHED.
(Not Set on Ground.) (NAD 83)

CERTIFICATE OF RECORD
THIS IS TO CERTIFY THAT THE ABOVE DESCRIBED SURVEY AND NOTES OF ACTUAL SURVEYS MADE BY ME OR UNDER MY SUPERVISION AND THAT THE SAME ARE TRUE AND CORRECT TO THE BEST OF MY KNOWLEDGE AND BELIEF.
REGISTERED LAND SURVEYOR
REGISTRATION NO. 28285
STATE OF COLORADO
JUL 18 2018

REV: 4 11-13-18 A.P. (SHL MOVE)

PDOP = 1.3

NAD 83 (SURFACE LOCATION)	NAD 83 (ENTRY POINT)	NAD 83 (TARGET BOTTOM HOLE)
LATITUDE = 40°27'46.83" (40.463008)	LATITUDE = 40°28'09.26" (40.469239)	LATITUDE = 40°28'08.56" (40.469044)
LONGITUDE = 104°55'38.28" (104.927300)	LONGITUDE = 104°55'36.17" (104.926714)	LONGITUDE = 104°58'15.59" (104.970997)
NAD 27 (SURFACE LOCATION)	NAD 27 (ENTRY POINT)	NAD 27 (TARGET BOTTOM HOLE)
LATITUDE = 40°27'46.89" (40.463026)	LATITUDE = 40°28'09.32" (40.469256)	LATITUDE = 40°28'08.62" (40.469061)
LONGITUDE = 104°55'36.37" (104.926771)	LONGITUDE = 104°55'34.26" (104.926183)	LONGITUDE = 104°58'13.68" (104.970467)

UWELLS, LLC
Corporate Office * 85 South 200 East
Vernal, UT 84078 * (435) 789-1017

SURVEYED BY CHAD MEIERS, J.C.
DRAWN BY K.B.
10-14-16
02-25-16
SCALE
1" = 1000'

WELL LOCATION PLAT