

Great Western Operating Company, LLC

Location	Colorado	Slot	Slot E-05 - Raindance FC 23-249HN
Field	Wattenburg	Well	Raindance FC 23-249HN
Installation	Raindance	Wellbore	Raindance FC 23-249HN (PWB)

Created by admin

Date plotted 12-Dec-2018

Plot reference is Raindance FC 23-249HN (PWB).

Ref wellpath is Raindance FC 23-249HN (PWP#1).

Coordinates are in Feet reference Slot E-05 - Raindance FC 23-249HN.

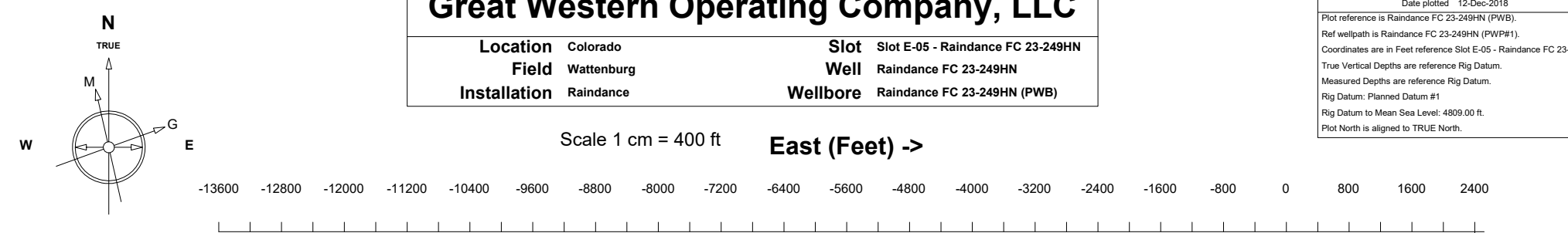
True Vertical Depths are reference Rig Datum.

Measured Depths are reference Rig Datum.

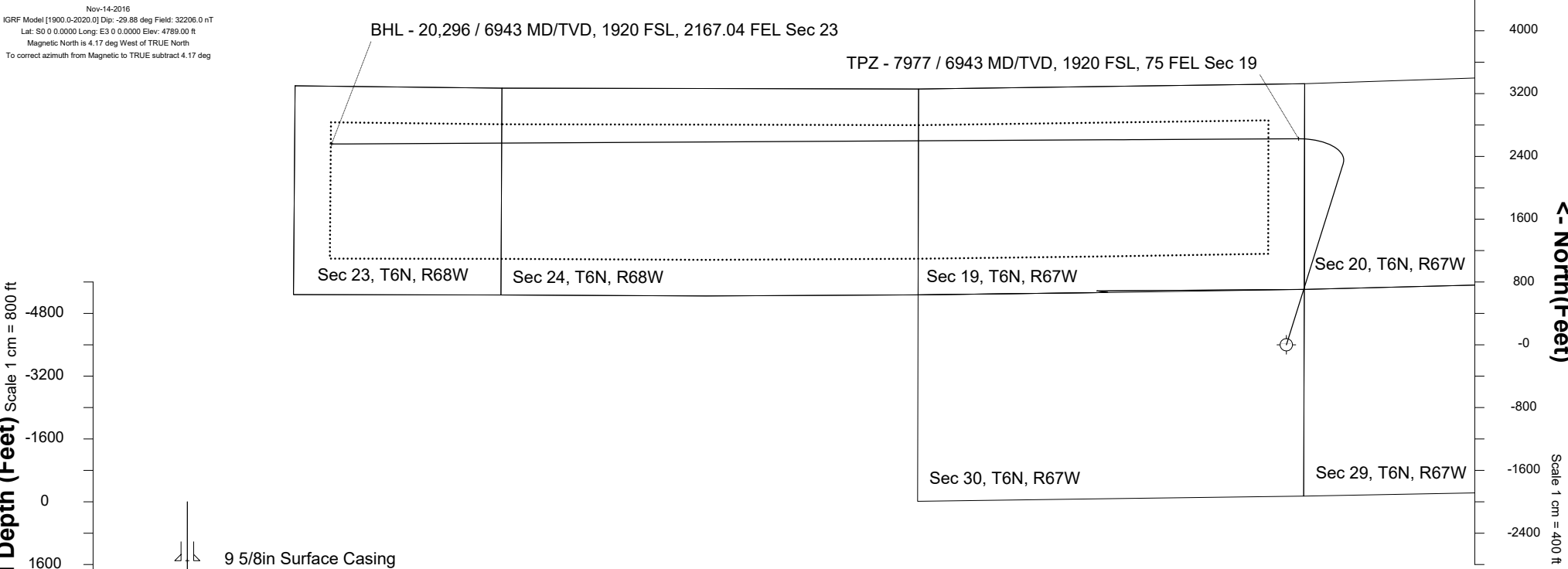
Rig Datum: Planned Datum #1

Rig Datum to Mean Sea Level: 4809.00 ft.

Plot North is aligned to TRUE North.



Nov-14-2016
IGRF Model [1900.0-2020.0] Dip: -29.88 deg Field: 32206.0 nT
Lat: S0 0 0.0000 Long: E3 0 0.0000 Elev: 4789.00 ft
Magnetic North is 4.17 deg West of TRUE North
To correct azimuth from Magnetic to TRUE subtract 4.17 deg



Header Information	measured depth (ft)	inclination (°)	azimuth (°)	true vertical depth (ft)	northing +N/-S (ft)	easting +E/-W (ft)
Operator Name	0	0.00	0.00	0	0.00	0.00
Great Western Oil & Gas Company LLC	100	0.00	0.00	100	0.00	0.00
Operator Number	200	0.00	0.00	200	0.00	0.00
10110	300	0.00	0.00	300	0.00	0.00
Well Name and Number	400	0.00	0.00	400	0.00	0.00
Raindance FC 23-249HN	500	0.00	0.00	500	0.00	0.00
API Number (if available)	600	0.00	0.00	600	0.00	0.00
	700	0.00	0.00	700	0.00	0.00
Location: QQ SEC TWP RGE	800	0.00	0.00	800	0.00	0.00
NENE 30 6N 67W	900	0.00	0.00	900	0.00	0.00
Citing Type: Planned or Actual	1000	0.00	0.00	1000	0.00	0.00
Planned	1100	0.00	0.00	1100	0.00	0.00
Deviation Indicator	1200	0.00	0.00	1200	0.00	0.00
Horizontal ▼	1300	0.00	0.00	1300	0.00	0.00
North Reference	1400	0.00	0.00	1400	0.00	0.00
True ▼	1500	0.00	0.00	1500	0.00	0.00
Grid Type	1600	0.00	0.00	1600	0.00	0.00
▼	1700	1.20	17.42	1700	0.40	0.13
	1800	4.20	17.42	1800	4.89	1.54
	1900	7.20	17.42	1899	14.37	4.51
	2000	10.20	17.42	1998	28.80	9.04
	2100	13.20	17.42	2096	48.15	15.10
	2200	16.20	17.42	2193	72.36	22.70
	2300	19.20	17.42	2288	101.36	31.80
	2400	22.20	17.42	2382	135.09	42.38
	2500	25.20	17.42	2473	173.43	54.41
	2600	28.20	17.42	2563	216.30	67.86
	2700	30.00	17.42	2650	263.22	82.58
	2800	30.00	17.42	2736	310.93	97.55

2900	30.00	17.42	2823	358.64	112.51
3000	30.00	17.42	2909	406.35	127.48
3100	30.00	17.42	2996	454.06	142.45
3200	30.00	17.42	3083	501.77	157.42
3300	30.00	17.42	3169	549.48	172.38
3400	30.00	17.42	3256	597.19	187.35
3500	30.00	17.42	3342	644.90	202.32
3600	30.00	17.42	3429	692.61	217.29
3700	30.00	17.42	3516	740.32	232.25
3800	30.00	17.42	3602	788.03	247.22
3900	30.00	17.42	3689	835.74	262.19
4000	30.00	17.42	3775	883.45	277.16
4100	30.00	17.42	3862	931.16	292.12
4200	30.00	17.42	3949	978.87	307.09
4300	30.00	17.42	4035	1026.58	322.06
4400	30.00	17.42	4122	1074.29	337.03
4500	30.00	17.42	4208	1122.00	351.99
4600	30.00	17.42	4295	1169.71	366.96
4700	30.00	17.42	4382	1217.42	381.93
4800	30.00	17.42	4468	1265.13	396.90
4900	30.00	17.42	4555	1312.84	411.86
5000	30.00	17.42	4641	1360.55	426.83
5100	30.00	17.42	4728	1408.26	441.80
5200	30.00	17.42	4815	1455.97	456.77
5300	30.00	17.42	4901	1503.68	471.73
5400	30.00	17.42	4988	1551.39	486.70
5500	30.00	17.42	5074	1599.10	501.67
5600	30.00	17.42	5161	1646.81	516.64
5700	30.00	17.42	5248	1694.52	531.60
5800	30.00	17.42	5334	1742.22	546.57
5900	30.00	17.42	5421	1789.93	561.54
6000	30.00	17.42	5507	1837.64	576.51
6100	30.00	17.42	5594	1885.35	591.47
6200	30.00	17.42	5681	1933.06	606.44

6300	30.00	17.42	5767	1980.77	621.41
6400	30.00	17.42	5854	2028.48	636.38
6500	30.00	17.42	5940	2076.19	651.34
6600	30.00	17.42	6027	2123.90	666.31
6700	30.00	17.42	6114	2171.61	681.28
6800	30.00	17.42	6200	2219.32	696.25
6900	30.00	17.42	6287	2267.03	711.21
7000	29.74	15.42	6373	2314.75	726.09
7100	28.89	354.99	6461	2362.85	730.59
7200	31.11	335.40	6548	2410.52	717.69
7300	35.82	319.33	6631	2456.32	687.79
7400	42.19	307.04	6709	2498.85	641.80
7500	49.58	297.62	6779	2536.82	581.11
7600	57.57	290.14	6838	2569.07	507.57
7700	65.94	283.90	6885	2594.64	423.41
7800	74.52	278.45	6919	2612.73	331.20
7900	83.23	273.43	6938	2622.81	233.72
8000	90.00	269.69	6943	2624.78	133.94
8100	90.00	269.69	6943	2624.23	33.95
8200	90.00	269.69	6943	2623.69	-66.05
8300	90.00	269.69	6943	2623.15	-166.05
8400	90.00	269.69	6943	2622.60	-266.05
8500	90.00	269.69	6943	2622.06	-366.05
8600	90.00	269.69	6943	2621.52	-466.05
8700	90.00	269.69	6943	2620.97	-566.05
8800	90.00	269.69	6943	2620.43	-666.04
8900	90.00	269.69	6943	2619.89	-766.04
9000	90.00	269.69	6943	2619.34	-866.04
9100	90.00	269.69	6943	2618.80	-966.04
9200	90.00	269.69	6943	2618.25	-1066.04
9300	90.00	269.69	6943	2617.71	-1166.04
9400	90.00	269.69	6943	2617.17	-1266.03
9500	90.00	269.69	6943	2616.62	-1366.03
9600	90.00	269.69	6943	2616.08	-1466.03

9700	90.00	269.69	6943	2615.54	-1566.03
9800	90.00	269.69	6943	2614.99	-1666.03
9900	90.00	269.69	6943	2614.45	-1766.03
10000	90.00	269.69	6943	2613.91	-1866.03
10100	90.00	269.69	6943	2613.36	-1966.02
10200	90.00	269.69	6943	2612.82	-2066.02
10300	90.00	269.69	6943	2612.28	-2166.02
10400	90.00	269.69	6943	2611.73	-2266.02
10500	90.00	269.69	6943	2611.19	-2366.02
10600	90.00	269.69	6943	2610.65	-2466.02
10700	90.00	269.69	6943	2610.10	-2566.02
10800	90.00	269.69	6943	2609.56	-2666.01
10900	90.00	269.69	6943	2609.02	-2766.01
11000	90.00	269.69	6943	2608.47	-2866.01
11100	90.00	269.69	6943	2607.93	-2966.01
11200	90.00	269.69	6943	2607.39	-3066.01
11300	90.00	269.69	6943	2606.84	-3166.01
11400	90.00	269.69	6943	2606.30	-3266.01
11500	90.00	269.69	6943	2605.75	-3366.00
11600	90.00	269.69	6943	2605.21	-3466.00
11700	90.00	269.69	6943	2604.67	-3566.00
11800	90.00	269.69	6943	2604.12	-3666.00
11900	90.00	269.69	6943	2603.58	-3766.00
12000	90.00	269.69	6943	2603.04	-3866.00
12100	90.00	269.69	6943	2602.49	-3965.99
12200	90.00	269.69	6943	2601.95	-4065.99
12300	90.00	269.69	6943	2601.41	-4165.99
12400	90.00	269.69	6943	2600.86	-4265.99
12500	90.00	269.69	6943	2600.32	-4365.99
12600	90.00	269.69	6943	2599.78	-4465.99
12700	90.00	269.69	6943	2599.23	-4565.99
12800	90.00	269.69	6943	2598.69	-4665.98
12900	90.00	269.69	6943	2598.15	-4765.98
13000	90.00	269.69	6943	2597.60	-4865.98

13100	90.00	269.69	6943	2597.06	-4965.98
13200	90.00	269.69	6943	2596.52	-5065.98
13300	90.00	269.69	6943	2595.97	-5165.98
13400	90.00	269.69	6943	2595.43	-5265.98
13500	90.00	269.69	6943	2594.89	-5365.97
13600	90.00	269.69	6943	2594.34	-5465.97
13700	90.00	269.69	6943	2593.80	-5565.97
13800	90.00	269.69	6943	2593.25	-5665.97
13900	90.00	269.69	6943	2592.71	-5765.97
14000	90.00	269.69	6943	2592.17	-5865.97
14100	90.00	269.69	6943	2591.62	-5965.97
14200	90.00	269.69	6943	2591.08	-6065.96
14300	90.00	269.69	6943	2590.54	-6165.96
14400	90.00	269.69	6943	2589.99	-6265.96
14500	90.00	269.69	6943	2589.45	-6365.96
14600	90.00	269.69	6943	2588.91	-6465.96
14700	90.00	269.69	6943	2588.36	-6565.96
14800	90.00	269.69	6943	2587.82	-6665.95
14900	90.00	269.69	6943	2587.28	-6765.95
15000	90.00	269.69	6943	2586.73	-6865.95
15100	90.00	269.69	6943	2586.19	-6965.95
15200	90.00	269.69	6943	2585.65	-7065.95
15300	90.00	269.69	6943	2585.10	-7165.95
15400	90.00	269.69	6943	2584.56	-7265.95
15500	90.00	269.69	6943	2584.02	-7365.94
15600	90.00	269.69	6943	2583.47	-7465.94
15700	90.00	269.69	6943	2582.93	-7565.94
15800	90.00	269.69	6943	2582.38	-7665.94
15900	90.00	269.69	6943	2581.84	-7765.94
16000	90.00	269.69	6943	2581.30	-7865.94
16100	90.00	269.69	6943	2580.75	-7965.94
16200	90.00	269.69	6943	2580.21	-8065.93
16300	90.00	269.69	6943	2579.67	-8165.93
16400	90.00	269.69	6943	2579.12	-8265.93

16500	90.00	269.69	6943	2578.58	-8365.93
16600	90.00	269.69	6943	2578.04	-8465.93
16700	90.00	269.69	6943	2577.49	-8565.93
16800	90.00	269.69	6943	2576.95	-8665.93
16900	90.00	269.69	6943	2576.41	-8765.92
17000	90.00	269.69	6943	2575.86	-8865.92
17100	90.00	269.69	6943	2575.32	-8965.92
17200	90.00	269.69	6943	2574.78	-9065.92
17300	90.00	269.69	6943	2574.23	-9165.92
17400	90.00	269.69	6943	2573.69	-9265.92
17500	90.00	269.69	6943	2573.15	-9365.92
17600	90.00	269.69	6943	2572.60	-9465.91
17700	90.00	269.69	6943	2572.06	-9565.91
17800	90.00	269.69	6943	2571.52	-9665.91
17900	90.00	269.69	6943	2570.97	-9765.91
18000	90.00	269.69	6943	2570.43	-9865.91
18100	90.00	269.69	6943	2569.88	-9965.91
18200	90.00	269.69	6943	2569.34	-10065.90
18300	90.00	269.69	6943	2568.80	-10165.90
18400	90.00	269.69	6943	2568.25	-10265.90
18500	90.00	269.69	6943	2567.71	-10365.90
18600	90.00	269.69	6943	2567.17	-10465.90
18700	90.00	269.69	6943	2566.62	-10565.90
18800	90.00	269.69	6943	2566.08	-10665.90
18900	90.00	269.69	6943	2565.54	-10765.89
19000	90.00	269.69	6943	2564.99	-10865.89
19100	90.00	269.69	6943	2564.45	-10965.89
19200	90.00	269.69	6943	2563.91	-11065.89
19300	90.00	269.69	6943	2563.36	-11165.89
19400	90.00	269.69	6943	2562.82	-11265.89
19500	90.00	269.69	6943	2562.28	-11365.89
19600	90.00	269.69	6943	2561.73	-11465.88
19700	90.00	269.69	6943	2561.19	-11565.88
19800	90.00	269.69	6943	2560.65	-11665.88

19900	90.00	269.69	6943	2560.10	-11765.88
20000	90.00	269.69	6943	2559.56	-11865.88
20100	90.00	269.69	6943	2559.02	-11965.88
20200	90.00	269.69	6943	2558.47	-12065.88
20296	90.00	269.69	6943	2557.95	-12162.13