

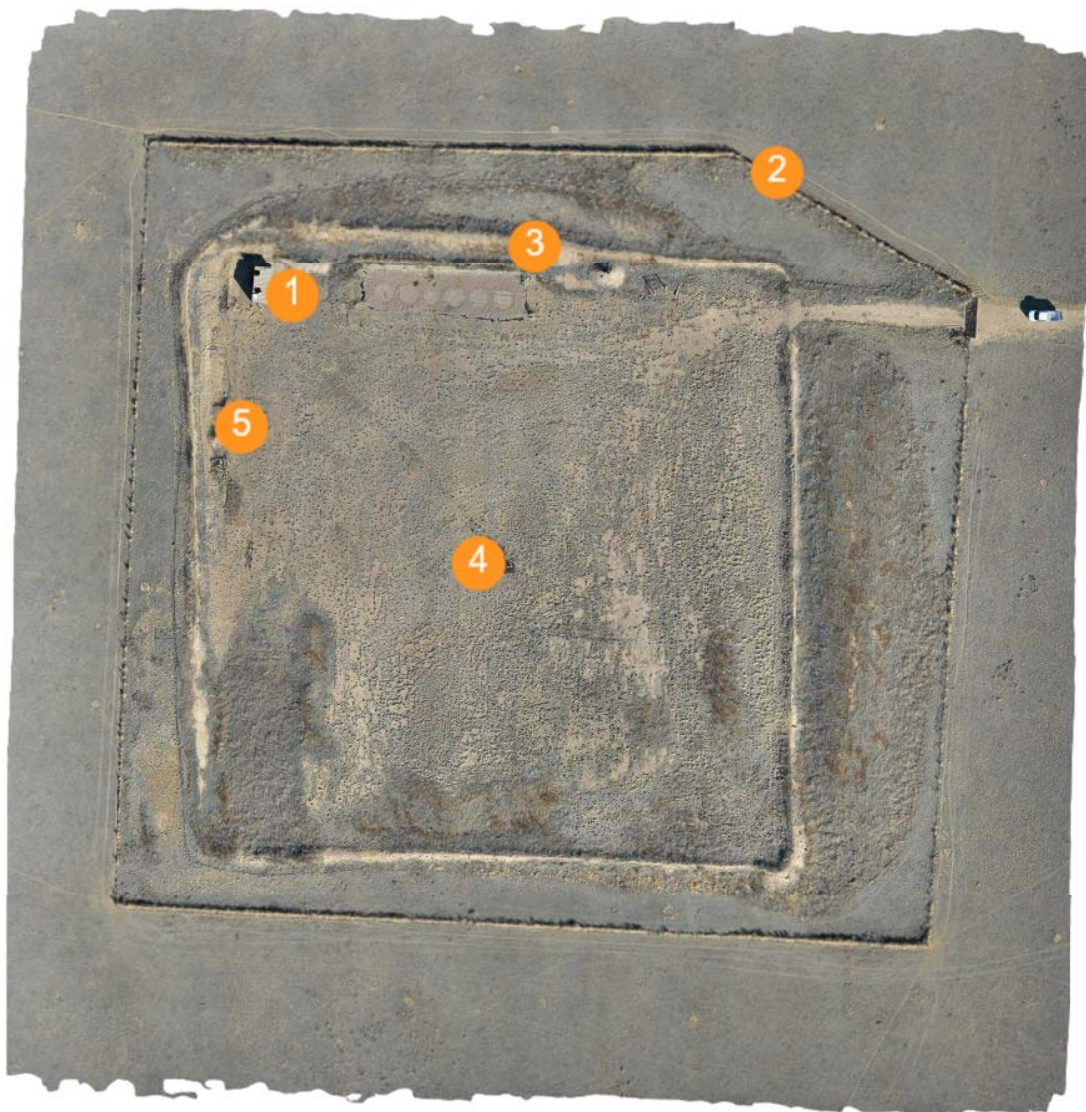
Issue Report

Kern State 36-16-46 #1H, 017-07729



Report created on February 9, 2021

Captured: February 5, 2021



Type	Count
Debris	4
Other	1

No.	Summary	Type	Created	Status
5	Risers, Pipe, Fittings and misc debris.	Debris	Feb 9, 2021 at 3:05pm	Open
4	Wellhead area with risers and debris.	Debris	Feb 9, 2021 at 3:03pm	Open
3	Area where tank battery was, steel panels and berms.	Debris	Feb 9, 2021 at 3:01pm	Open
2	Weeds in most of fencing	Other	Feb 9, 2021 at 2:58pm	Open
1	Control shack, misc pipe and fittings	Debris	Feb 9, 2021 at 2:57pm	Open

Debris

No. 1 OPEN

Captured: Feb 5, 2021 at 9:37am



Type

Debris

Lat/Long

38.62702, -102.51306

Summary

Control shack, misc pipe and fittings

Created

Feb 9, 2021 at 2:57pm by Craig Quint

No. 3 OPEN

Captured: Feb 5, 2021 at 9:37am

**Type**

Debris

Lat/Long

38.62710, -102.51254

Summary

Area where tank battery was, steel panels and berms.

Created

Feb 9, 2021 at 3:01pm by Craig Quint

No. 4 OPEN

Captured: Feb 5, 2021 at 9:37am



Type
Debris

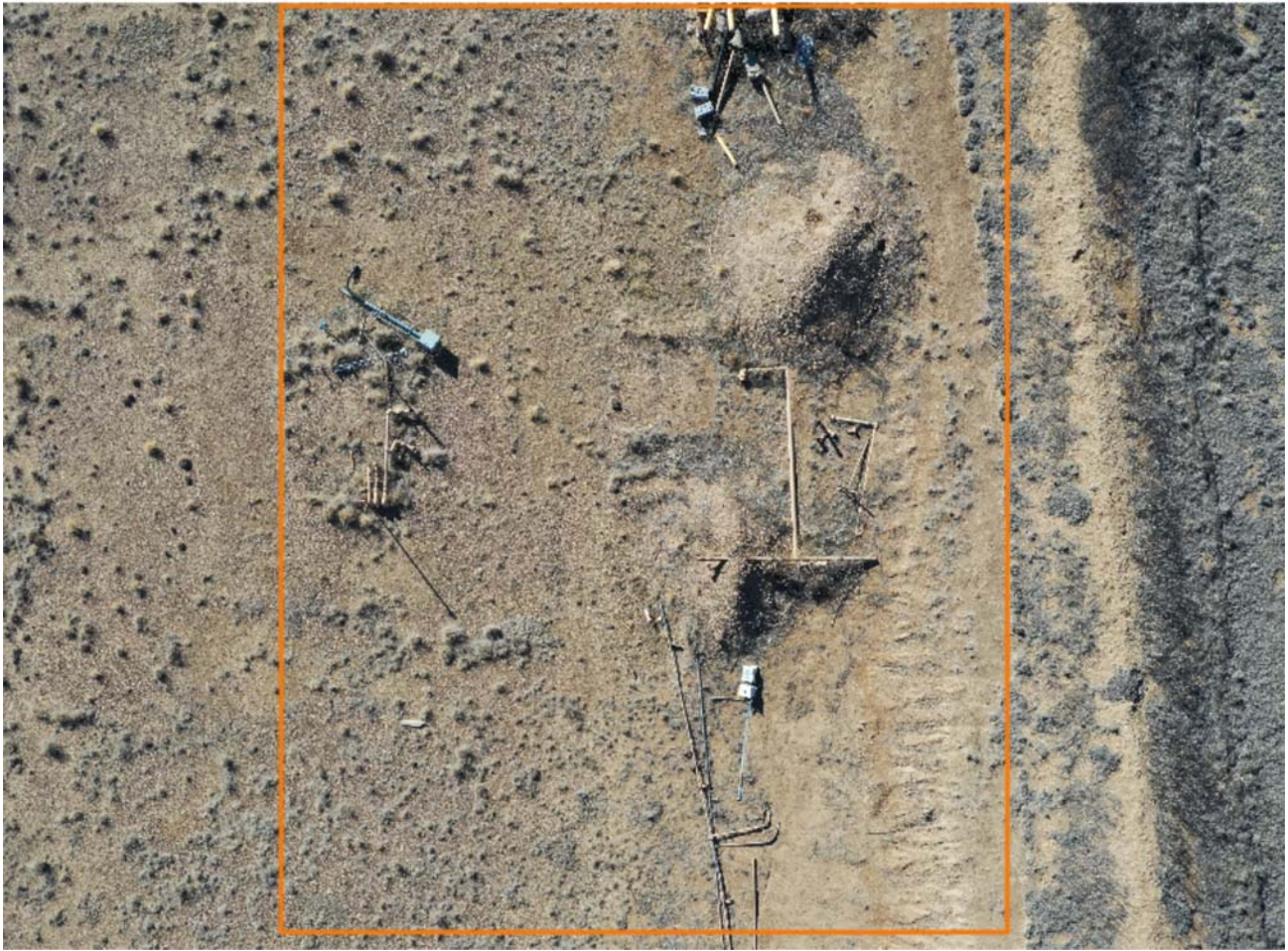
Lat/Long
38.62656, -102.51266

Summary
Wellhead area with risers and debris.

Created
Feb 9, 2021 at 3:03pm by Craig Quint

No. 5 OPEN

Captured: Feb 5, 2021 at 9:37am



Type
Debris

Lat/Long
38.62680, -102.51317

Summary
Risers, Pipe, Fittings and misc debris.

Created
Feb 9, 2021 at 3:05pm by Craig Quint

Other

No.2 OPEN

Captured: Feb 5, 2021 at 9:37am



Type
Other

Lat/Long
38.62723, -102.51201

Summary
Weeds in most of fencing

Created
Feb 9, 2021 at 2:58pm by Craig Quint

