

Caerus Piceance LLC

I3

Location # 334940

Mar 2, 2021 at 1:19:45 PM
39.473449,-107.756128 ±84.27m
COGCC



location

Mar 2, 2021 at 1:21:10 PM
39.473105,-107.756015 ±4.71m
COGCC



location



COLORADO
Oil & Gas Conservation
Commission
Department of Natural Resources

Caerus Piceance LLC
I3
Location # 334940



location



location



Caerus Piceance LLC

I3

Location # 334940

Mar 2, 2021 at 1:20:09 PM
39.473352,-107.756193 ±4.45m
COGCC



Mar 2, 2021 at 1:20:28 PM
39.473260,-107.756137 ±5.05m
COGCC



Soil, equipment and possibly impacted material is not segregated or identified within the interior of perimeter BMP.



COLORADO
Oil & Gas Conservation
Commission
Department of Natural Resources

Caerus Piceance LLC

I3

Location # 334940

Mar 2, 2021 at 1:20:43 PM
39.473179,-107.756083 ±4.77m
COGCC



Mar 2, 2021 at 1:21:20 PM
39.473105,-107.756015 ±4.71m
COGCC



Soil, equipment and possibly impacted material is not segregated or identified within the interior of perimeter BMP.



COLORADO
Oil & Gas Conservation
Commission
Department of Natural Resources

Caerus Piceance LLC
I3
Location # 334940

Mar 2, 2021 at 1:22:27 PM
39.472824,-107.756178 ±4.74m
COGCC



Mar 2, 2021 at 1:28:34 PM
39.472807,-107.755973 ±4.69m
COGCC

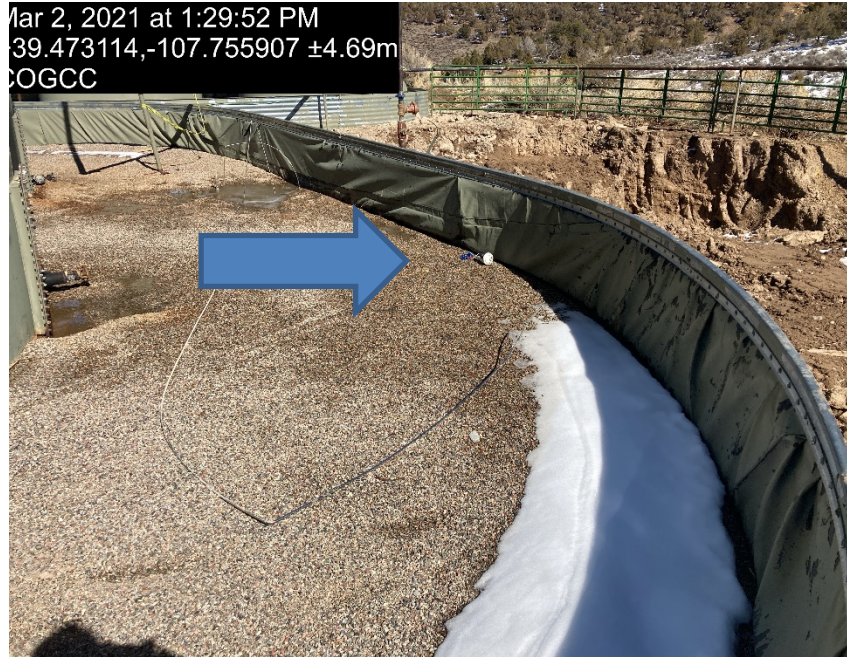


Equipment to be replaced



COLORADO
Oil & Gas Conservation
Commission
Department of Natural Resources

Caerus Piceance LLC
I3
Location # 334940



Debris



COLORADO
Oil & Gas Conservation
Commission
Department of Natural Resources

Caerus Piceance LLC
I3
Location # 334940



location



location



COLORADO
Oil & Gas Conservation
Commission
Department of Natural Resources

Caerus Piceance LLC
I3
Location # 334940



Soil, equipment and possibly impacted material is not segregated or identified within the interior of perimeter BMP.



COLORADO
Oil & Gas Conservation
Commission
Department of Natural Resources