



August 12, 2020

Mr. Mike Gardner
TEP Environmental Specialist
TEP Rocky Mountain LLC
1058 County Road 215
Parachute, Colorado 81635

RE: RWF 43-9 Drill Pad Baseline Water Quality Evaluation

Dear Mr. Gardner,

Western Water & Land, Inc. (WWL) has completed a hydrologic Water Source evaluation for the TEP Rocky Mountain LLC (TEP) RWF 43-9 Drill Pad in accordance with Colorado Oil and Gas Conservation Commission (COGCC) Rule 609. Drill Pad RWF 43-9 is located in NE $\frac{1}{4}$, SE $\frac{1}{4}$, Section 9, Township 6 S, Range 94 W, 6 PM (see Figure 1).

Water Sources

The evaluation considered all Water Sources as defined in Rule 609 within a 0.5-mile radius of the referenced drill pad. Water Sources as defined in Rule 609 include Colorado Division of Water Resources (DWR) registered water wells (water wells with existing valid well permits), permitted or adjudicated springs, and monitoring wells installed for baseline sampling and monitoring under COGCC Rules 318A.e(4), 608, 609, 908.b(9) or specified conditions of approval. Water Sources located on the basis of section quarters were included in the evaluation if any portion of the section quarter(s) lies within the 0.5-mile radius area. Monitoring Hole permits (MH designation), and abandoned, canceled, denied, or expired permits of any type are typically not considered viable Water Sources. Similarly, water right decrees that are shown as having a non-existent or unusable structure in the state database are not considered a viable Water Source.

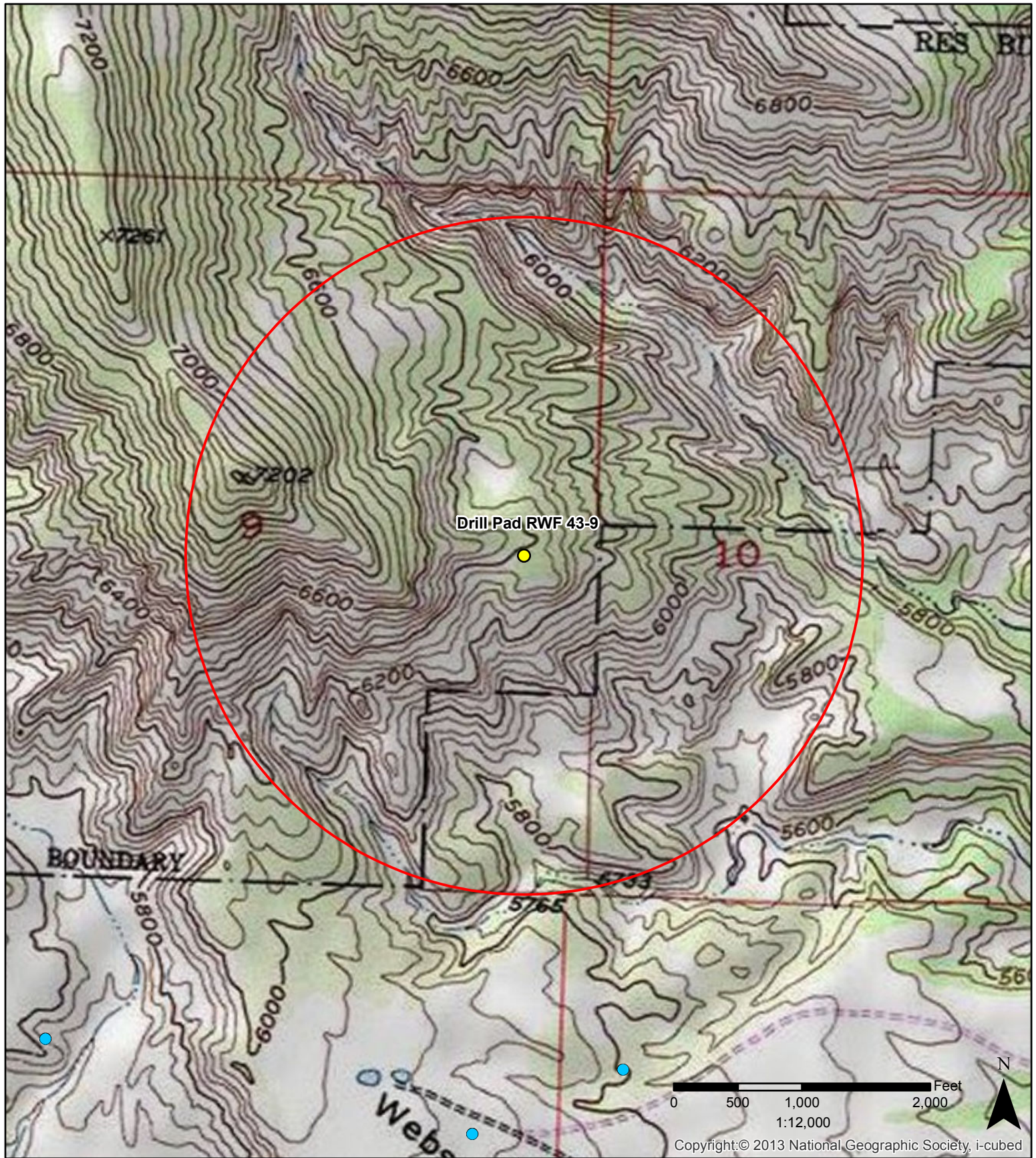
As indicated in Figure 1, no Water Sources were located within a 0.5-mile radius of the RWF 43-9 Drill Pad, and therefore no baseline groundwater sampling under COGCC rules is required.

If you have any questions or concerns, please contact me at (970) 242-0170.

Sincerely,

Bruce D. Smith
Principal Hydrogeologist
WESTERN WATER & LAND, INC.

Attachments



Legend

- | | |
|--|--|
| ● RWF 43-9 Drill Pad | ■ Water right decree |
| ○ 0.5-mile radius evaluation area | ● Outside permits or decrees |
| ● Constructed well | |
| ● Well completion status unknown | |

**Figure 1: RWF 43-9 Drill Pad
0.5-Mile Radius Water Source Evaluation
NE 1/4, SE 1/4, S9, T6S, R94W, 6 PM**

Garfield County, Colorado
TEP Rocky Mountain, LLC



Western Water & Land, Inc.