

OWN Resources Operating LLC, Roundtree 24-34
125-10172

Inspection #688309767

2/23/2021

Flowline Leak found at Routine Inspection



OWN RESOURCES OPERATING

WOOLERY ROUNDTREE 01-34
SW SW/4 SEC.34-T1N-R46W
API #05-125-06562-00
YUMA COUNTY, CO
PH: 970-332-3585 OR 911

OWN RESOURCES OPERATING

ROUNDTREE 24-34
SE SW/4 SEC.34-T1N-R46W
API #05-125-10172-00
YUMA COUNTY, CO
PH: 970-332-3585 OR 911

OWN RESOURCES OPERATING

ROUNDTREE 23-34
NE SW/4 SEC.34-T1N-R46W
API #05-125-10171-00
YUMA COUNTY, CO
PH: 970-332-3585 OR 911

OWN RESOURCES OPERATING

WOOLERY ROUNDTREE 13-34
NW SW/4 SEC.34-T1N-R46W
API #05-125-08326-00
YUMA COUNTY, CO
PH: 970-332-3585 OR 911

OWN RESOURCES OPERATING

WOOLERY ROUNDTREE 22-34
SE NW/4 SEC.34-T1N-R46W
API #05-125-08739-00
YUMA COUNTY, CO
PH: 970-332-3585 OR 911

OWN RESOURCES OPERATING

WOOLERY ROUNDTREE 12-34
SW NW/4 SEC.34-T1N-R46W
API #05-125-09314-00
YUMA COUNTY, CO
PH: 970-332-3585 OR 911

OWN RESOURCES OPERATING

ROUNDTREE 03-33
NE NE/4 SEC.33-T1N-R46W
API #05-125-08133-00
YUMA COUNTY, CO
PH: 970-332-3585 OR 911

OWN RESOURCES OPERATING

WOOLERY ROUNDTREE 11-34
NW NW/4 SEC.34-T1N-R46W
API #05-125-07667-00
YUMA COUNTY, CO
PH: 970-332-3585 OR 911

OWN RESOURCES OPERATING

ROUNDTREE 01-27
SW SW/4 SEC.27-T1N-R46W
API #05-125-07744-00
YUMA COUNTY, CO
PH: 970-332-3585 OR 911

OWN RESOURCES OPERATING

ROUNDTREE 24-27
SE SW/4 SEC.27-T1N-R46W
API #05-125-07744-00
YUMA COUNTY, CO
PH: 970-332-3585 OR 911

OWN RESOURCES OPERATING

ROUNDTREE 02-27
SW SE/4 SEC.27-T1N-R46W
API #05-125-07799-00
YUMA COUNTY, CO
PH: 970-332-3585 OR 911

OWN RESOURCES OPERATING

ROUNDTREE 41-34
NE NE/4 SEC.34-T1N-R46W
API #05-125-07799-00
YUMA COUNTY, CO
PH: 970-332-3585 OR 911

Colorado Oil and Gas Conservation Commission

40.00295, -102.50474, 3878.0ft, 20°

02/23/2021 11:02:10 AM

OWN RESOURCES OPERATING

ROUNDTREE 24-34

SESW Sec. 34-T1N-R46W

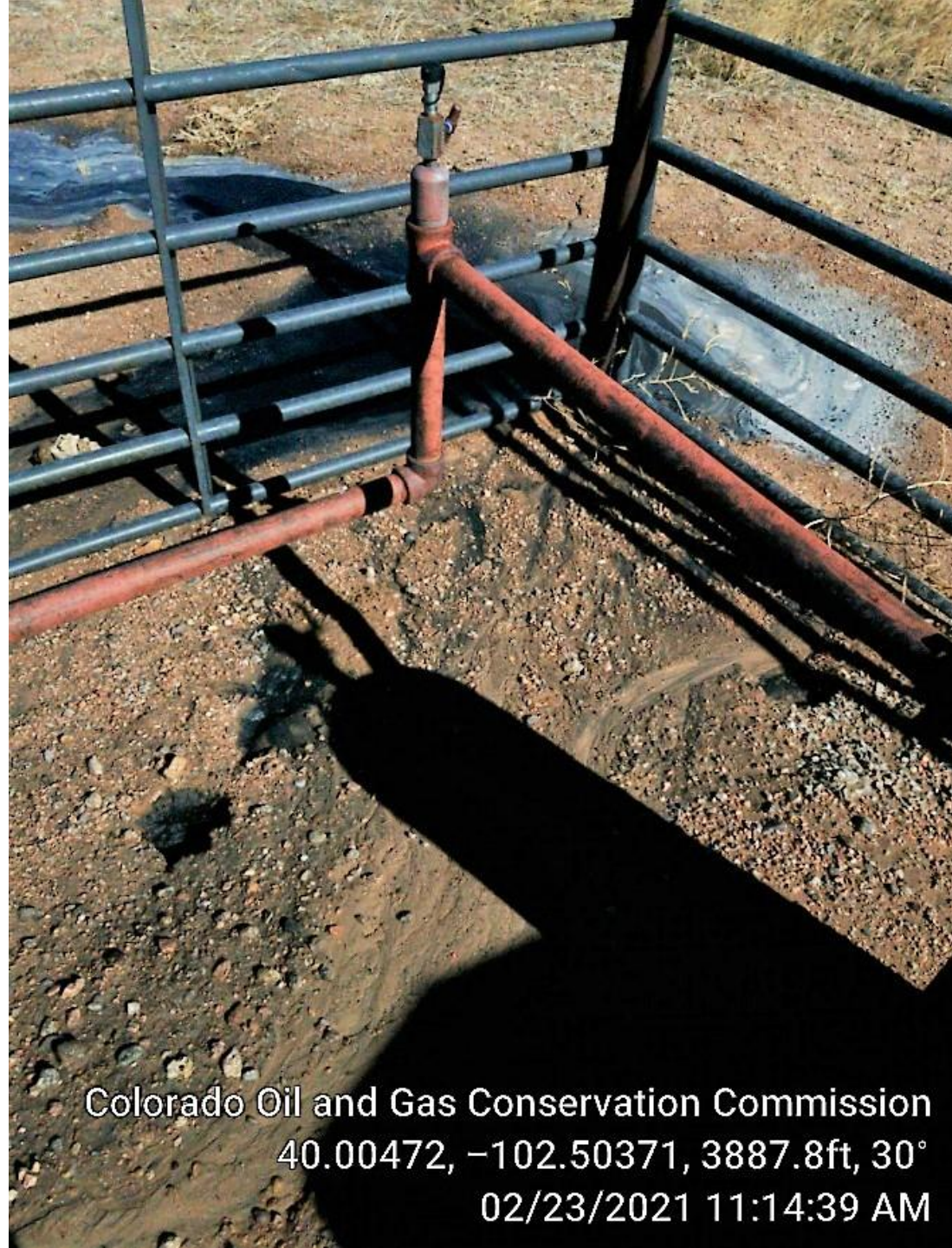
1 Mile West of Rd. T & 30

Yuma County, CO

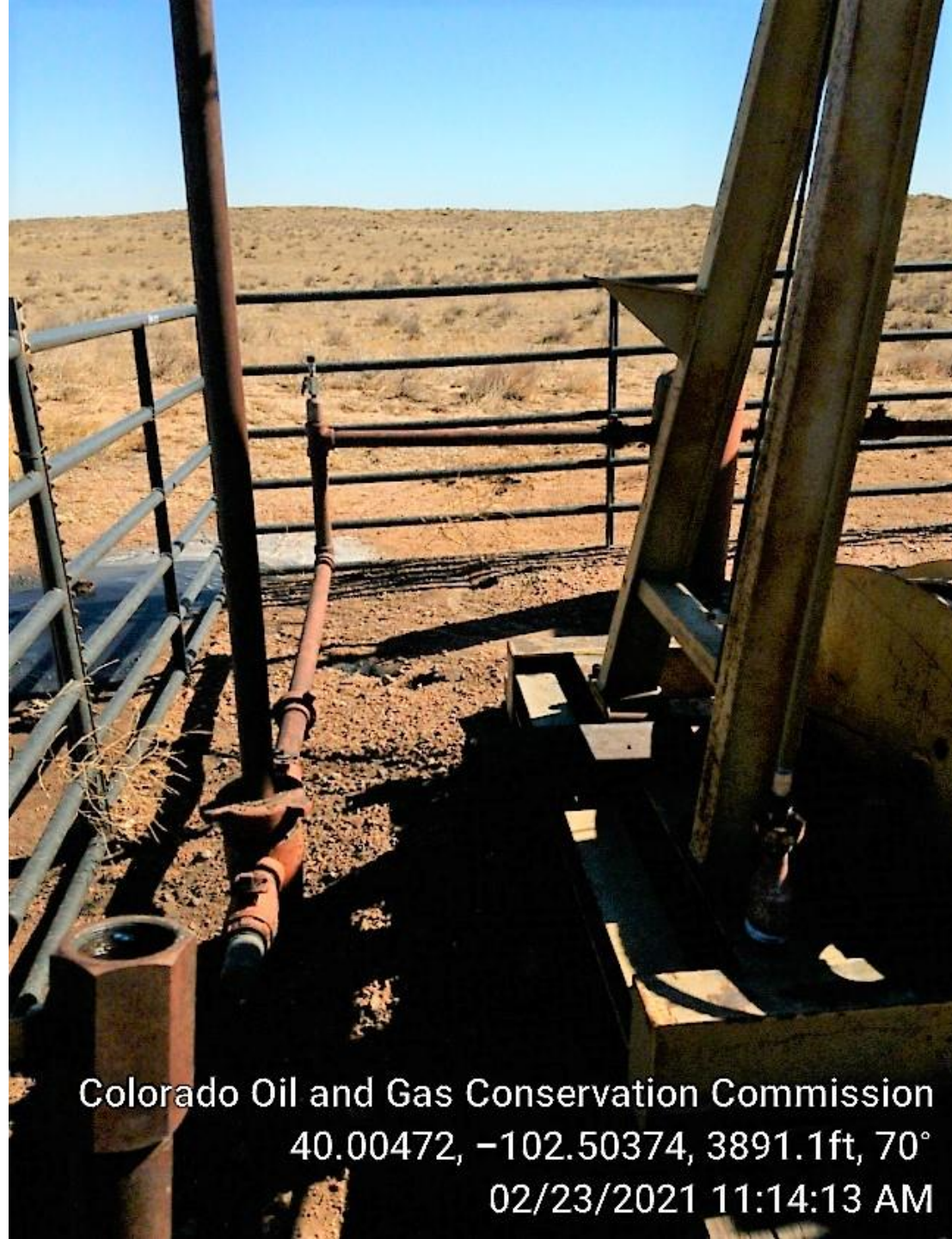
IN - HSE OF EMERGENCY CALL:
970-332-3585



Colorado Oil and Gas Conservation Commission
40.00466, -102.50375, 3894.4ft, 34°
02/23/2021 11:14:26 AM



Colorado Oil and Gas Conservation Commission
40.00472, -102.50371, 3887.8ft, 30°
02/23/2021 11:14:39 AM



Colorado Oil and Gas Conservation Commission
40.00472, -102.50374, 3891.1ft, 70°
02/23/2021 11:14:13 AM



Colorado Oil and Gas Conservation Commission
40.00471, -102.50374, 3894.4ft, 357°
02/23/2021 11:14:06 AM



Colorado Oil and Gas Conservation Commission
40.00473, -102.50382, 3884.5ft, 101°
02/23/2021 11:13:53 AM



Colorado Oil and Gas Conservation Commission
40.00469, -102.50372, 3891.1ft, 210°
02/23/2021 11:14:49 AM

