

OWN Resources Operating LLC, Woolery & Roundtree 1-33

125-06942

Inspection #688309764

2/23/2021

PA and GMR Battery Location for 125-11941



COLORADO

**Oil & Gas Conservation
Commission**

Department of Natural Resources

IN RESOURCES OPERATING

ROUNDTREE 33-33 1N46W

WSE/4 SEC. 33-T1N-R46W

API #05-125-11941-00

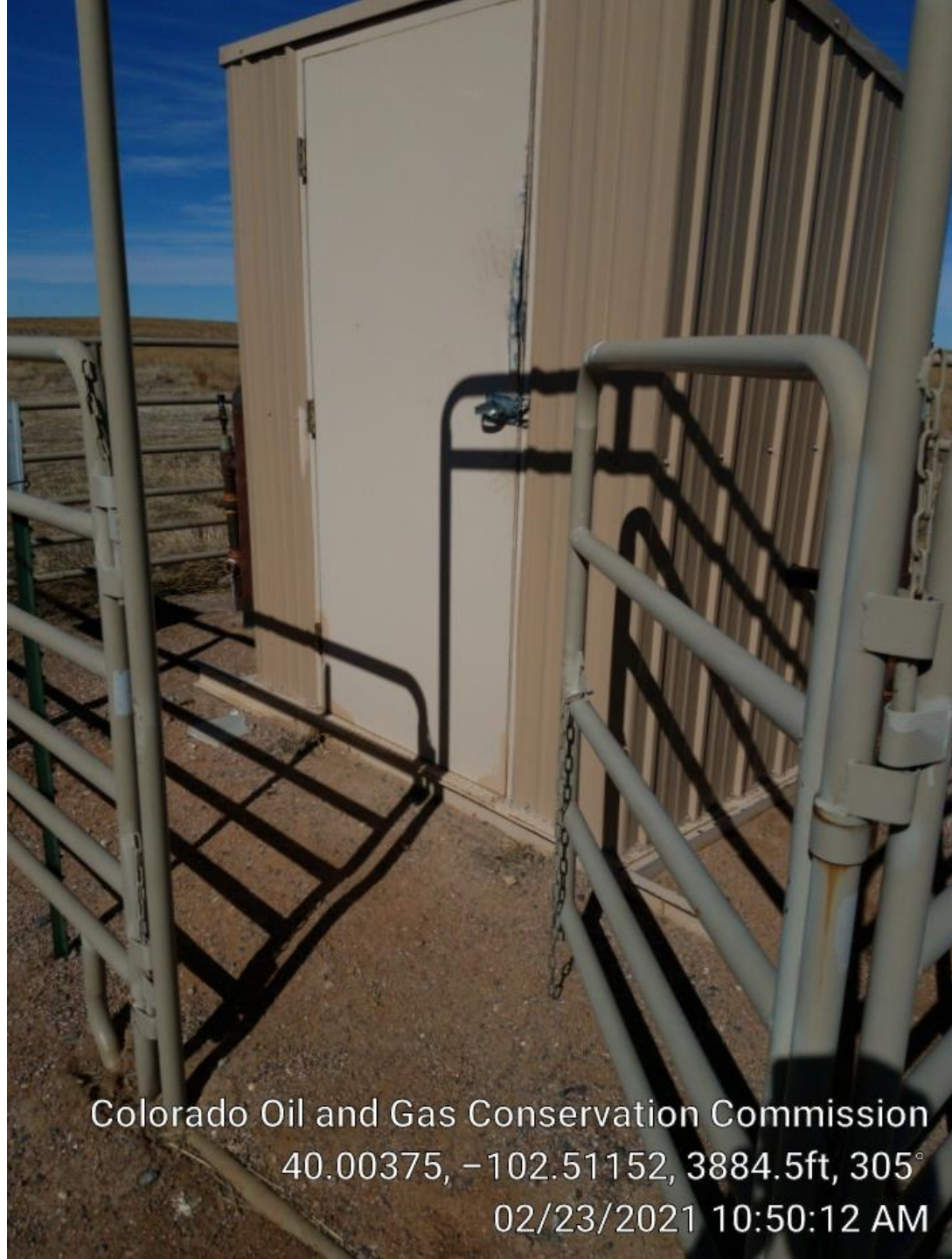
YUMA COUNTY, CO

PH: 970-332-3585 or 911

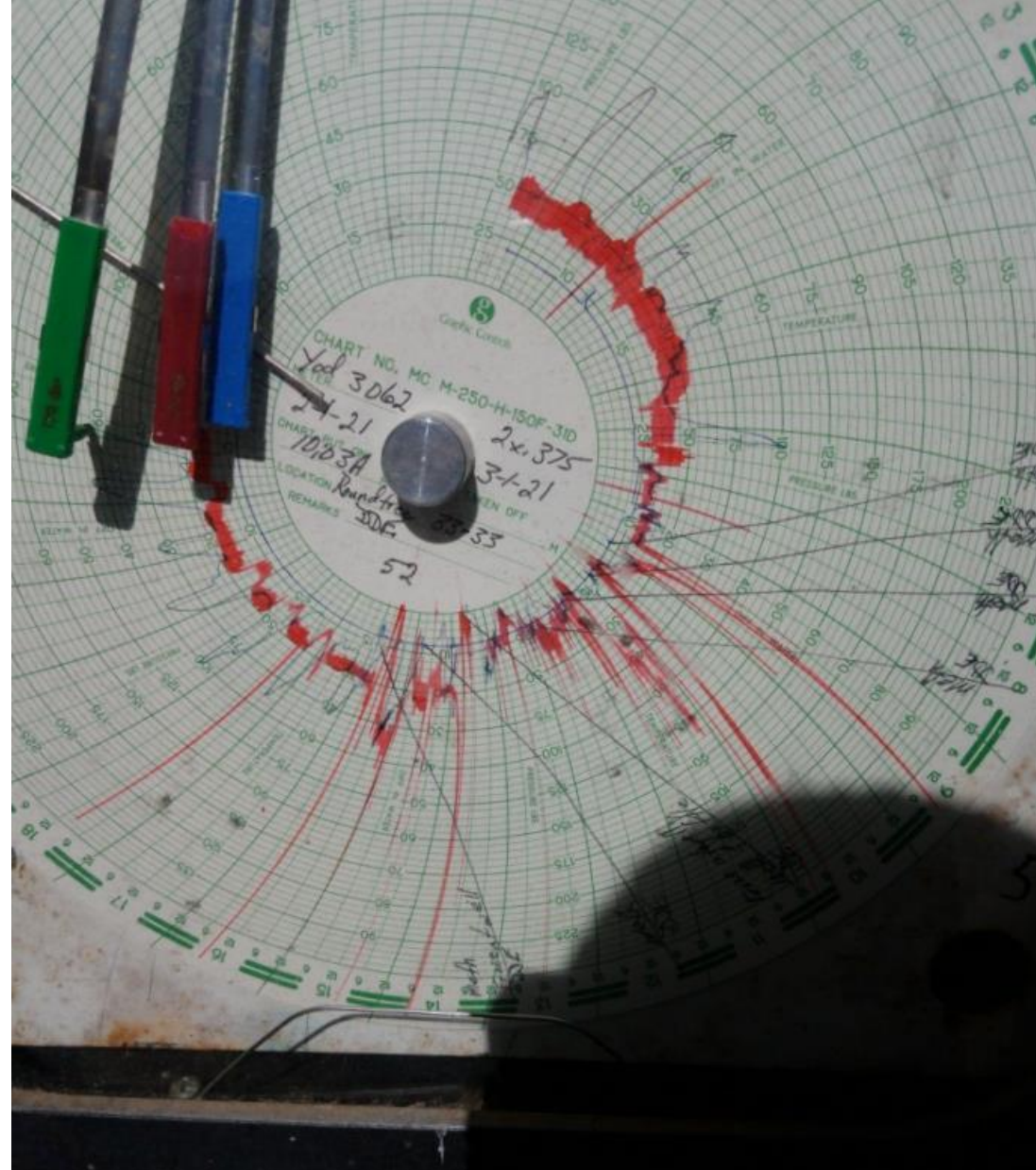
Colorado Oil and Gas Conservation Commission

40.00375, -102.51158, 3887.8ft, 351°

02/23/2021 10:50:04 AM



Colorado Oil and Gas Conservation Commission
40.00375, -102.51152, 3884.5ft, 305°
02/23/2021 10:50:12 AM



Colorado Oil and Gas Conservation Commission
40.00376, -102.51154, 3894.4ft, 346°
02/23/2021 10:50:34 AM

