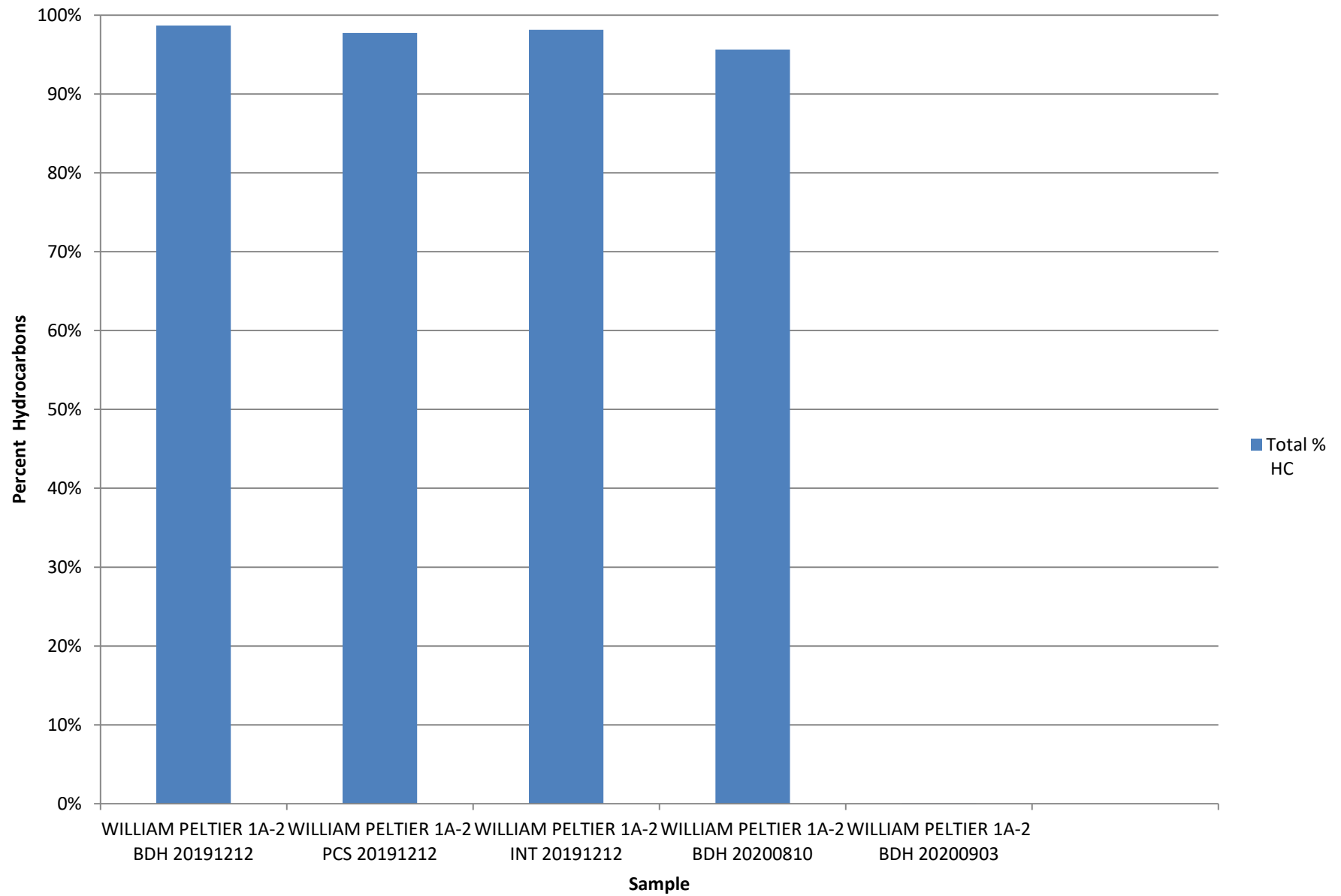
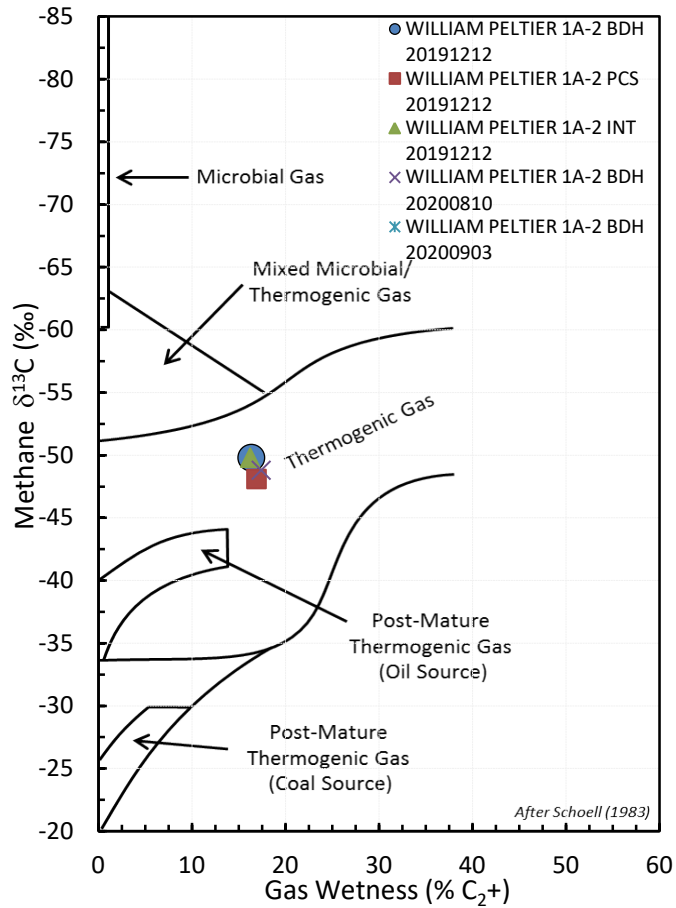


Total Percent Hydrocarbons

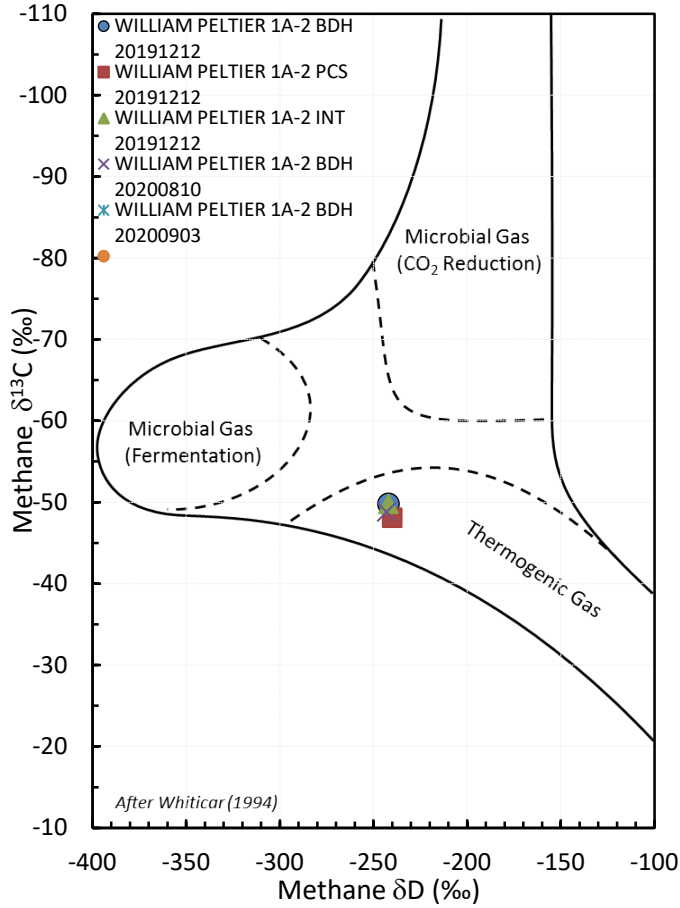


Stable Isotope Interpretive Plots

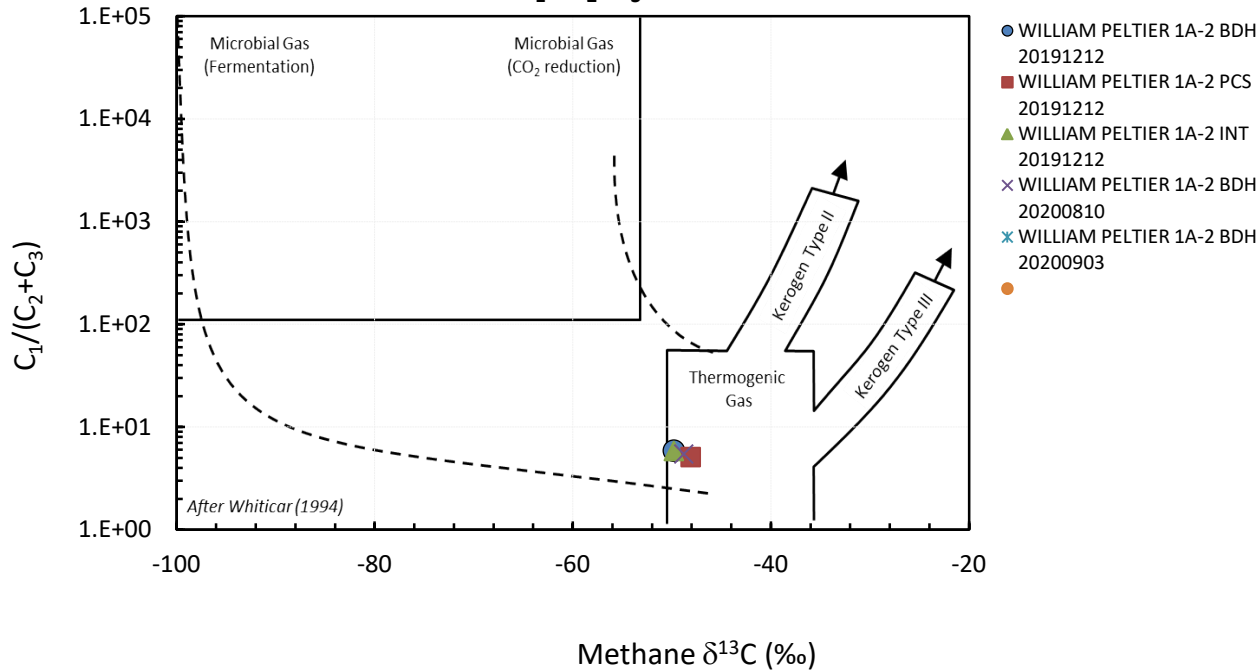
Methane vs Gas Wetness Genetic Classification

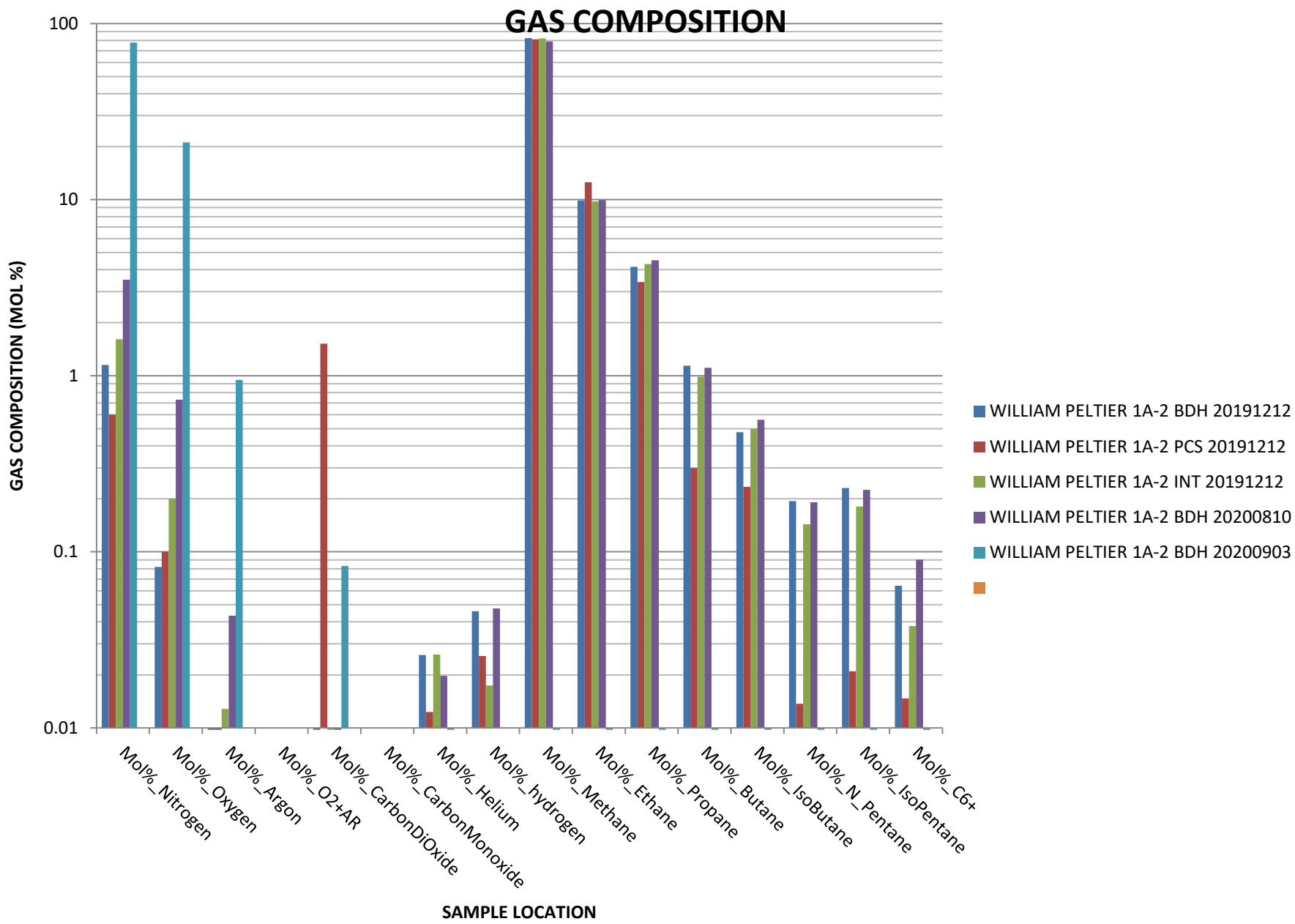


Methane $\delta^{13}\text{C}$ vs δD Genetic Classification Plot

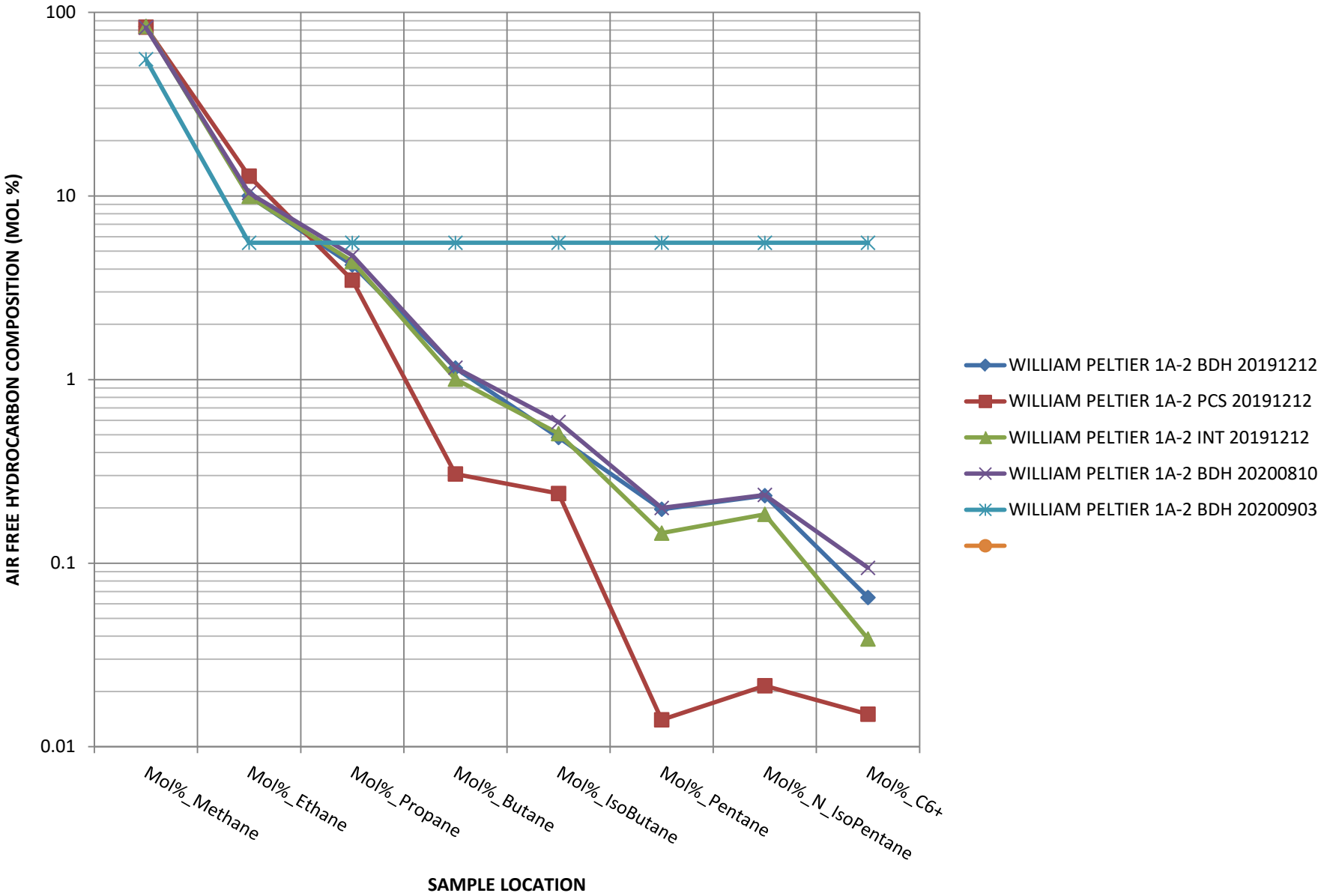


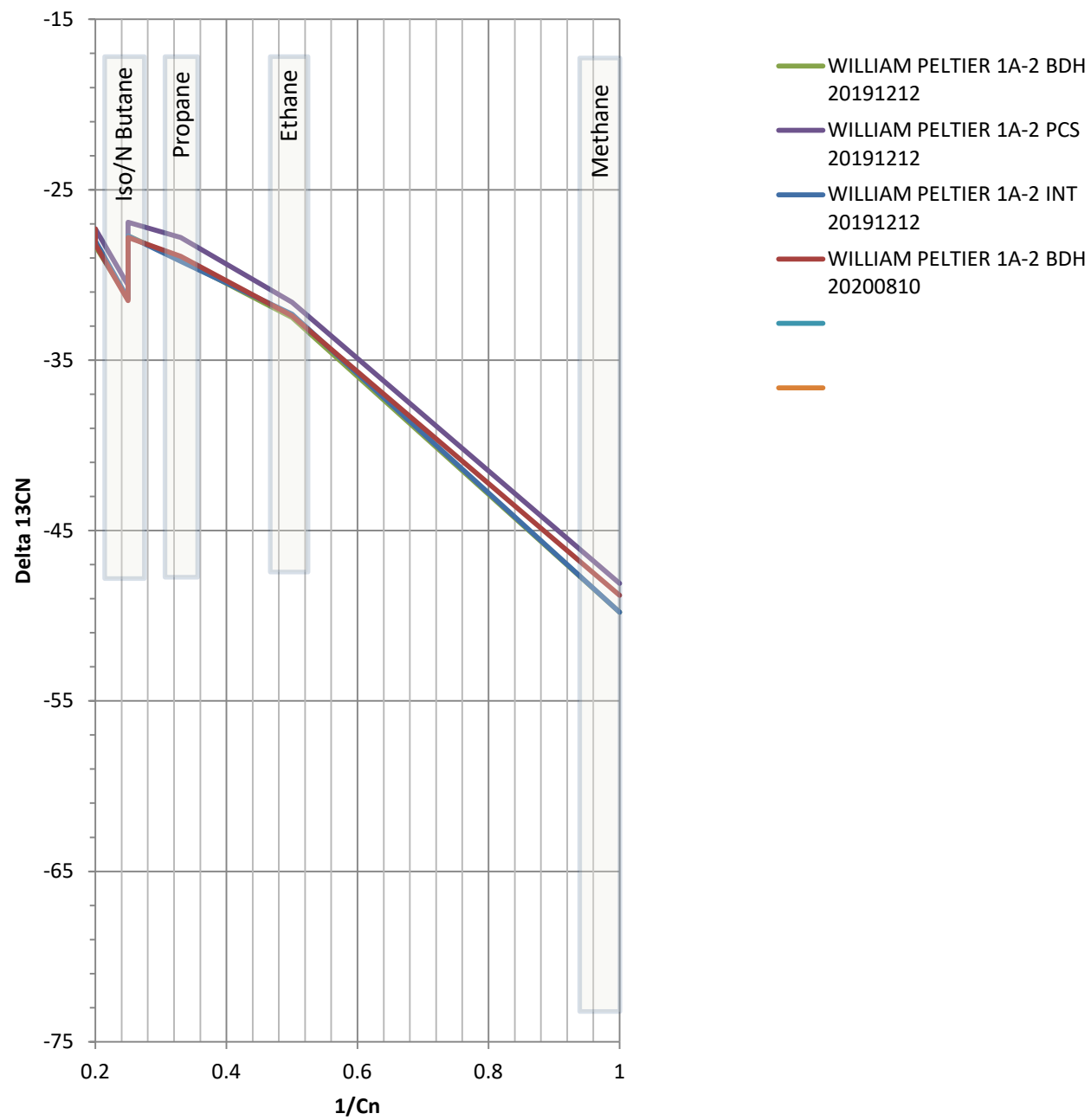
Methane $\delta^{13}\text{C}$ vs $\text{C}_1/(\text{C}_2+\text{C}_3)$ Genetic Classification Plot





HYDROCARBON COMPOSITION





Delta 13C2/Delta 13C3

Delta 13 C3

-20
-22
-24
-26
-28
-30
-32

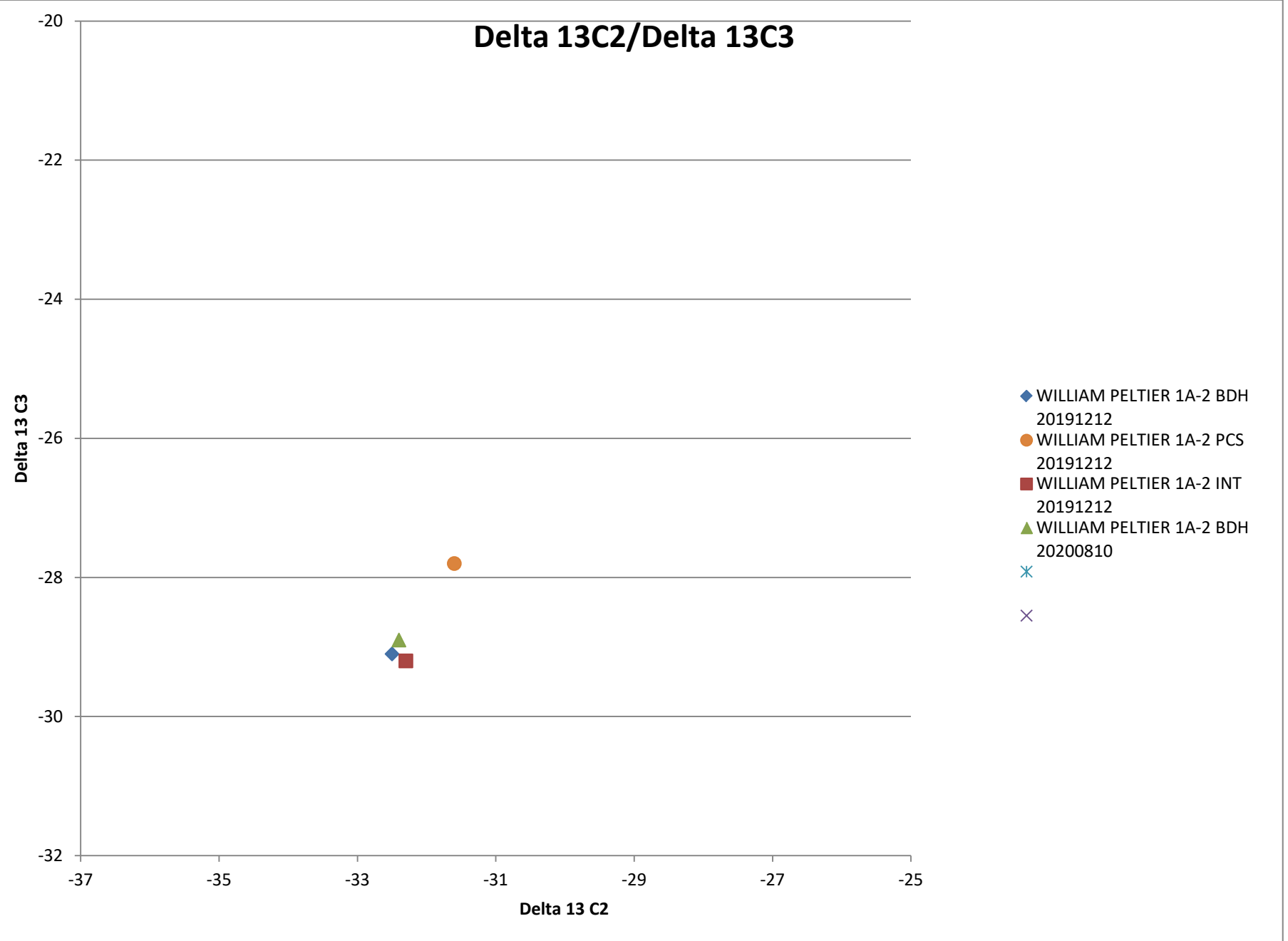
Delta 13 C2

-37 -35 -33 -31 -29 -27 -25

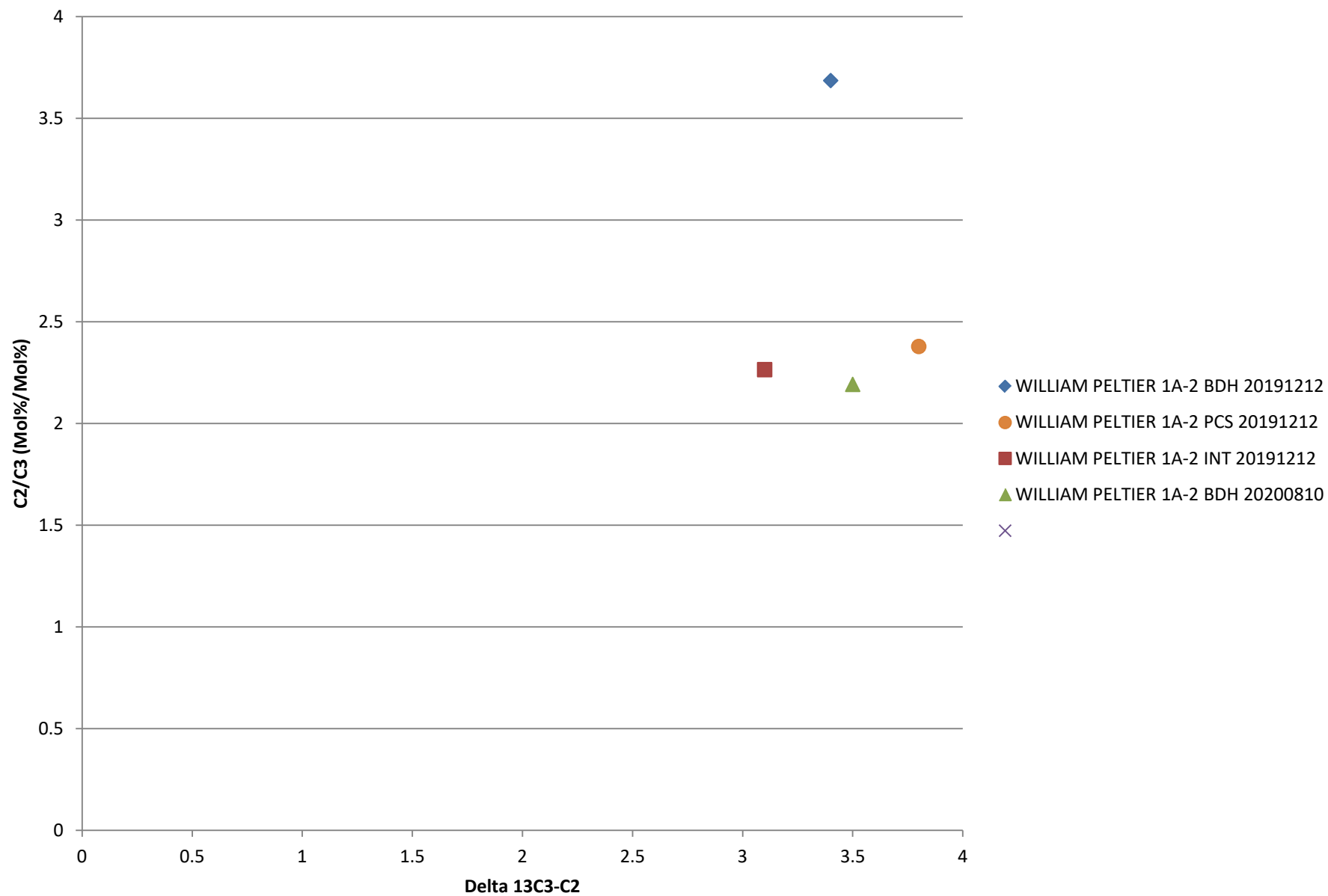
- ◆ WILLIAM PELTIER 1A-2 BDH 20191212
- WILLIAM PELTIER 1A-2 PCS 20191212
- WILLIAM PELTIER 1A-2 INT 20191212
- ▲ WILLIAM PELTIER 1A-2 BDH 20200810
- ✕
- ✕

✕

✕



Delta13 C2/C3 vs. Delta 13C3-C2



Delta 13 IC4/ Delta NC4

