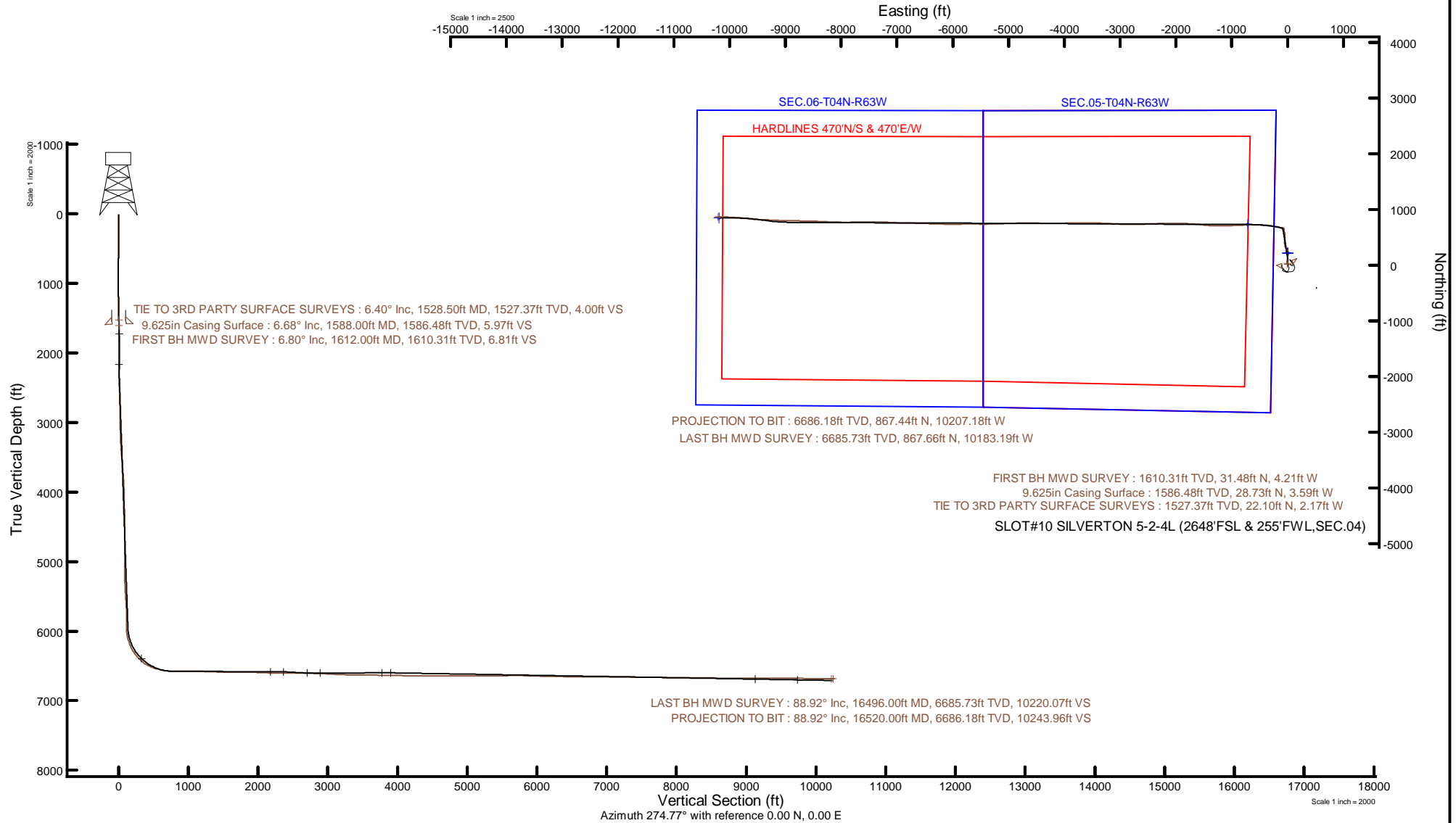


CONFLUENCE RESOURCES

Location: COLORADO Slot: SLOT#10 SILVERTON 5-2-4L (2648'FSL & 255'FWL,SEC.04)
 Field: WELD COUNTY (NAD83, TRUE NORTH) Well: SILVERTON 5-2-4L
 Facility: SEC.04-T04N-R63W Wellbore: SILVERTON 5-2-4L PWB



Plot reference wellpath is SILVERTON 5-2-4L PWB Rev-C.0	Grid System: NAD83 / Lambert Colorado SP, Northern Zone (501), US feet
True vertical depths are referenced to Ensign 162 (23) (RKB)	North Reference: True north
Reference wellpath measured depths are referenced to Ensign 162 (23) (RKB)	Scale: True distance
Ensign 162 (23) (RKB) to Mean Sea Level: 4648 feet	Coordinates are in feet referenced to Slot
Mean Sea Level to Mud line (At Slot: SLOT#10 SILVERTON 5-2-4L (2648'FSL & 255'FWL,SEC.04)): 0 feet	Depths are in feet
Offset wellpath MDs are referenced to each path's default MD datum	Created by: painsetr on 2020-12-18; Database: WellArchitectDB



REFERENCE WELLPATH IDENTIFICATION

Operator	CONFLUENCE RESOURCES	Well	SILVERTON 5-2-4L
Field	WELD COUNTY (NAD83, TRUE NORTH)	API	0512348441
Facility	SEC.04-T04N-R63W	Wellbore	SILVERTON 5-2-4L AWB
Slot	SLOT#10 SILVERTON 5-2-4L (2648'FSL & 255'FWL,SEC.04)		

REPORT SETUP INFORMATION

Projection System	NAD83 / Lambert Colorado SP, Northern Zone (501), US feet	Software System	WellArchitect® 6.0
North Reference	True	User	Painsetr
Scale	0.999958	Report Generated	12/18/2020 at 9:51:03 AM
Convergence at slot	0.68° East	Database	WellArchitectDB

WELLPATH LOCATION

	Local coordinates		Grid coordinates		Geographic coordinates	
	North[ft]	East[ft]	Easting[US ft]	Northing[US ft]	Latitude	Longitude
Slot Location	-222.23	-2.79	3292259.65	1368813.06	40.3410500°	-104.4515200°
Facility Reference Pt			3292259.81	1369035.30	40.3416600°	-104.4515100°
Field Reference Pt			3230456.90	1245096.09	40.0032400°	-104.6773400°

WELLPATH DATUM

Calculation method	Minimum curvature	Ensign 162 (23') (RKB) to Facility Vertical Datum	4648.00ft
Horizontal Reference Pt	Slot	Ensign 162 (23') (RKB) to Mean Sea Level	4648.00ft
Vertical Reference Pt	Ensign 162 (23') (RKB)	Ensign 162 (23') (RKB) to Mud Line at Slot (SLOT#10 SILVERTON 5-2-4L (2648'FSL & 255'FWL,SEC.04))	4648.00ft
MD Reference Pt	Ensign 162 (23') (RKB)	Section Origin	N 0.00, E 0.00 ft
Field Vertical Reference	Mean Sea Level	Section Azimuth	274.77°

REFERENCE WELLPATH IDENTIFICATION			
Operator	CONFLUENCE RESOURCES	Well	SILVERTON 5-2-4L
Field	WELD COUNTY (NAD83, TRUE NORTH)	API	0512348441
Facility	SEC.04-T04N-R63W	Wellbore	SILVERTON 5-2-4L AWB
Slot	SLOT#10 SILVERTON 5-2-4L (2648'FSL & 255'FWL,SEC.04)		

WELLPATH DATA (200 stations) † = interpolated, ‡ = extrapolated station												
MD [ft]	Inclination [°]	Azimuth [°]	TVD [ft]	Vert Sect [ft]	North [ft]	East [ft]	Grid East [US ft]	Grid North [US ft]	Latitude	Longitude	DLS [°/100ft]	Comments
0.00†	0.000	0.000	0.00	0.00	0.00	0.00	3292259.65	1368813.06	40.3410500	-104.4515200	0.00	
23.00	0.000	0.000	23.00	0.00	0.00	0.00	3292259.65	1368813.06	40.3410500	-104.4515200	0.00	
110.50	0.000	0.000	110.50	0.00	0.00	0.00	3292259.65	1368813.06	40.3410500	-104.4515200	0.00	
185.50	0.400	162.800	185.50	-0.10	-0.25	0.08	3292259.73	1368812.81	40.3410493	-104.4515197	0.53	
275.50	0.400	177.800	275.50	-0.25	-0.86	0.18	3292259.84	1368812.20	40.3410476	-104.4515193	0.12	
336.50	0.400	165.000	336.50	-0.35	-1.28	0.25	3292259.91	1368811.78	40.3410465	-104.4515191	0.15	
381.50	0.400	144.600	381.49	-0.51	-1.56	0.38	3292260.04	1368811.51	40.3410457	-104.4515186	0.31	
471.50	0.300	139.100	471.49	-0.88	-2.00	0.71	3292260.38	1368811.08	40.3410445	-104.4515174	0.12	
515.50	0.400	137.700	515.49	-1.07	-2.20	0.89	3292260.57	1368810.88	40.3410440	-104.4515168	0.23	
560.50	0.400	126.300	560.49	-1.32	-2.41	1.12	3292260.80	1368810.67	40.3410434	-104.4515160	0.18	
649.50	0.500	125.900	649.49	-1.92	-2.82	1.69	3292261.37	1368810.27	40.3410423	-104.4515139	0.11	
694.50	0.600	123.100	694.49	-2.29	-3.06	2.05	3292261.73	1368810.03	40.3410416	-104.4515127	0.23	
739.50	0.800	123.800	739.48	-2.78	-3.37	2.50	3292262.19	1368809.73	40.3410408	-104.4515110	0.44	
784.50	0.800	122.200	784.48	-3.33	-3.71	3.03	3292262.72	1368809.39	40.3410398	-104.4515091	0.05	
828.50	0.900	120.500	828.47	-3.91	-4.05	3.59	3292263.28	1368809.06	40.3410389	-104.4515071	0.23	
873.50	1.000	122.100	873.47	-4.58	-4.43	4.23	3292263.93	1368808.68	40.3410378	-104.4515048	0.23	
918.50	0.900	124.000	918.46	-5.24	-4.84	4.85	3292264.56	1368808.28	40.3410367	-104.4515026	0.23	
962.50	0.500	143.700	962.46	-5.66	-5.19	5.25	3292264.96	1368807.94	40.3410358	-104.4515012	1.05	
1007.50	0.200	251.100	1007.46	-5.72	-5.37	5.29	3292265.00	1368807.75	40.3410353	-104.4515010	1.31	
1048.50	1.000	304.900	1048.45	-5.35	-5.19	4.93	3292264.64	1368807.93	40.3410358	-104.4515023	2.19	
1093.50	1.700	314.000	1093.44	-4.49	-4.50	4.13	3292263.83	1368808.61	40.3410376	-104.4515052	1.62	
1137.50	2.000	315.600	1137.42	-3.40	-3.50	3.12	3292262.81	1368809.60	40.3410404	-104.4515088	0.69	
1182.50	2.200	321.900	1182.39	-2.22	-2.26	2.04	3292261.72	1368810.83	40.3410438	-104.4515127	0.68	
1226.50	2.200	336.000	1226.36	-1.24	-0.82	1.18	3292260.83	1368812.25	40.3410477	-104.4515158	1.23	
1271.50	2.600	342.100	1271.32	-0.43	0.94	0.51	3292260.15	1368814.01	40.3410526	-104.4515182	1.05	
1315.50	3.300	355.500	1315.26	0.16	3.15	0.11	3292259.72	1368816.21	40.3410586	-104.4515196	2.22	
1360.50	4.000	356.600	1360.17	0.59	6.01	-0.09	3292259.49	1368819.07	40.3410665	-104.4515203	1.56	
1405.50	5.000	357.100	1405.03	1.07	9.53	-0.28	3292259.25	1368822.59	40.3410762	-104.4515210	2.22	
1449.50	6.000	352.900	1448.83	1.80	13.73	-0.66	3292258.82	1368826.78	40.3410877	-104.4515224	2.45	
1494.50	6.200	348.800	1493.57	2.95	18.45	-1.43	3292258.00	1368831.49	40.3411006	-104.4515251	1.07	

REFERENCE WELLPATH IDENTIFICATION				
Operator	CONFLUENCE RESOURCES		Well	SILVERTON 5-2-4L
Field	WELD COUNTY (NAD83, TRUE NORTH)		API	0512348441
Facility	SEC.04-T04N-R63W		Wellbore	SILVERTON 5-2-4L AWB
Slot	SLOT#10 SILVERTON 5-2-4L (2648'FSL & 255'FWL,SEC.04)			

WELLPATH DATA (200 stations)

MD [ft]	Inclination [°]	Azimuth [°]	TVD [ft]	Vert Sect [ft]	North [ft]	East [ft]	Grid East [US ft]	Grid North [US ft]	Latitude	Longitude	DLS [°/100ft]	Comments
1528.50	6.400	348.300	1527.37	4.00	22.10	-2.17	3292257.22	1368835.14	40.3411107	-104.4515278	0.61	TIE TO 3RD PARTY SURFACE SURVEYS
1612.00	6.800	347.120	1610.31	6.81	31.48	-4.21	3292255.06	1368844.49	40.3411364	-104.4515351	0.51	FIRST BH MWD SURVEY
1701.00	6.790	348.590	1698.69	9.88	41.77	-6.43	3292252.73	1368854.76	40.3411647	-104.4515431	0.20	
1791.00	8.450	354.730	1787.89	12.51	53.57	-8.09	3292250.93	1368866.54	40.3411971	-104.4515490	2.05	
1881.00	8.810	356.330	1876.87	14.67	67.04	-9.14	3292249.72	1368879.99	40.3412340	-104.4515528	0.48	
1969.00	8.700	5.960	1963.85	15.53	80.38	-8.88	3292249.82	1368893.33	40.3412706	-104.4515518	1.67	
2059.00	8.720	14.880	2052.82	14.19	93.75	-6.42	3292252.12	1368906.72	40.3413073	-104.4515430	1.50	
2149.00	8.130	8.980	2141.85	12.52	106.63	-3.67	3292254.72	1368919.63	40.3413427	-104.4515332	1.16	
2238.00	8.140	9.680	2229.95	11.52	119.05	-1.63	3292256.61	1368932.08	40.3413768	-104.4515258	0.11	
2328.00	8.130	7.920	2319.05	10.62	131.64	0.32	3292258.41	1368944.69	40.3414113	-104.4515189	0.28	
2417.00	8.070	0.550	2407.16	10.74	144.12	1.25	3292259.19	1368957.18	40.3414456	-104.4515155	1.17	
2507.00	8.000	0.920	2496.28	11.62	156.70	1.41	3292259.20	1368969.76	40.3414801	-104.4515150	0.10	
2596.00	8.300	354.700	2584.38	13.16	169.29	0.91	3292258.56	1368982.34	40.3415147	-104.4515167	1.05	
2686.00	8.220	350.880	2673.45	15.84	182.11	-0.71	3292256.79	1368995.14	40.3415499	-104.4515225	0.62	
2775.00	8.430	353.350	2761.51	18.66	194.87	-2.47	3292254.87	1369007.88	40.3415849	-104.4515289	0.47	
2865.00	7.880	357.520	2850.60	20.74	207.58	-3.50	3292253.69	1369020.58	40.3416198	-104.4515326	0.90	
2954.00	8.110	3.880	2938.74	21.61	219.94	-3.34	3292253.71	1369032.94	40.3416537	-104.4515320	1.03	
3044.00	7.980	355.800	3027.85	22.68	232.51	-3.37	3292253.53	1369045.51	40.3416882	-104.4515321	1.26	
3133.00	7.840	352.880	3116.01	24.89	244.69	-4.57	3292252.18	1369057.68	40.3417217	-104.4515364	0.48	
3223.00	7.970	351.170	3205.15	27.62	256.95	-6.29	3292250.32	1369069.91	40.3417553	-104.4515426	0.30	
3313.00	8.040	343.520	3294.28	31.37	269.15	-9.04	3292247.43	1369082.08	40.3417888	-104.4515524	1.19	
3402.00	8.000	341.920	3382.41	36.03	281.01	-12.72	3292243.60	1369093.89	40.3418213	-104.4515656	0.25	
3492.00	8.350	329.980	3471.50	42.19	292.62	-17.94	3292238.25	1369105.44	40.3418532	-104.4515843	1.92	
3581.00	8.330	329.760	3559.56	49.58	303.78	-24.42	3292231.64	1369116.52	40.3418839	-104.4516076	0.04	
3671.00	8.350	327.180	3648.61	57.30	314.91	-31.24	3292224.69	1369127.57	40.3419144	-104.4516321	0.42	
3760.00	7.770	325.880	3736.73	65.02	325.32	-38.12	3292217.69	1369137.90	40.3419430	-104.4516567	0.68	
3850.00	8.430	338.900	3825.84	71.72	336.51	-43.91	3292211.77	1369149.02	40.3419737	-104.4516775	2.16	
3940.00	8.470	348.640	3914.86	76.44	349.17	-47.59	3292207.94	1369161.63	40.3420084	-104.4516907	1.59	
4029.00	8.410	353.490	4002.90	79.53	362.06	-49.62	3292205.76	1369174.49	40.3420438	-104.4516980	0.80	
4118.00	8.250	358.060	4090.96	81.55	374.91	-50.57	3292204.65	1369187.33	40.3420791	-104.4517014	0.77	

REFERENCE WELLPATH IDENTIFICATION

Operator	CONFLUENCE RESOURCES	Well	SILVERTON 5-2-4L
Field	WELD COUNTY (NAD83, TRUE NORTH)	API	0512348441
Facility	SEC.04-T04N-R63W	Wellbore	SILVERTON 5-2-4L AWB
Slot	SLOT#10 SILVERTON 5-2-4L (2648'FSL & 255'FWL,SEC.04)		

WELLPATH DATA (200 stations)

MD [ft]	Inclination [°]	Azimuth [°]	TVD [ft]	Vert Sect [ft]	North [ft]	East [ft]	Grid East [US ft]	Grid North [US ft]	Latitude	Longitude	DLS [°/100ft]	Comments
4208.00	8.450	356.620	4180.01	83.24	387.96	-51.18	3292203.89	1369200.38	40.3421149	-104.4517036	0.32	
4297.00	8.550	356.490	4268.03	85.12	401.09	-51.97	3292202.94	1369213.50	40.3421510	-104.4517064	0.11	
4387.00	8.400	1.700	4357.05	86.44	414.34	-52.18	3292202.57	1369226.74	40.3421873	-104.4517072	0.87	
4476.00	8.430	8.620	4445.09	86.35	427.29	-51.01	3292203.59	1369239.70	40.3422229	-104.4517030	1.14	
4566.00	8.140	358.530	4534.16	86.59	440.18	-50.19	3292204.26	1369252.60	40.3422583	-104.4517000	1.65	
4655.00	7.870	1.780	4622.29	87.60	452.57	-50.16	3292204.14	1369264.99	40.3422923	-104.4516999	0.59	
4744.00	8.080	8.580	4710.43	87.50	464.85	-49.04	3292205.12	1369277.28	40.3423260	-104.4516959	1.09	
4834.00	8.030	3.160	4799.55	87.25	477.38	-47.75	3292206.26	1369289.82	40.3423604	-104.4516913	0.85	
4923.00	7.960	7.210	4887.68	87.17	489.70	-46.63	3292207.23	1369302.16	40.3423942	-104.4516873	0.64	
5013.00	8.030	7.620	4976.81	86.59	502.11	-45.02	3292208.70	1369314.59	40.3424283	-104.4516815	0.10	
5102.00	8.400	2.860	5064.90	86.49	514.77	-43.87	3292209.70	1369327.25	40.3424630	-104.4516774	0.87	
5192.00	8.670	358.750	5153.90	87.42	528.11	-43.69	3292209.72	1369340.60	40.3424996	-104.4516767	0.74	
5281.00	8.580	353.650	5241.89	89.41	541.42	-44.57	3292208.68	1369353.89	40.3425362	-104.4516799	0.87	
5371.00	8.540	352.240	5330.89	92.15	554.71	-46.21	3292206.88	1369367.17	40.3425726	-104.4516858	0.24	
5460.00	8.450	346.000	5418.92	95.69	567.60	-48.69	3292204.25	1369380.03	40.3426080	-104.4516947	1.04	
5549.00	8.620	335.540	5506.94	101.05	580.02	-53.03	3292199.76	1369392.39	40.3426421	-104.4517102	1.75	
5639.00	8.300	340.000	5595.96	107.06	592.26	-58.05	3292194.61	1369404.58	40.3426757	-104.4517282	0.81	
5728.00	8.310	346.070	5684.03	111.82	604.54	-61.79	3292190.72	1369416.81	40.3427094	-104.4517417	0.98	
5818.00	8.410	359.510	5773.08	114.50	617.44	-63.41	3292188.94	1369429.68	40.3427448	-104.4517475	2.17	
5907.00	8.200	3.690	5861.15	115.22	630.28	-63.06	3292189.14	1369442.53	40.3427801	-104.4517462	0.72	
5997.00	8.340	9.960	5950.21	114.75	643.12	-61.52	3292190.53	1369455.38	40.3428153	-104.4517407	1.01	
6086.00	11.840	326.990	6037.94	119.77	657.15	-65.38	3292186.50	1369469.37	40.3428538	-104.4517546	9.04	
6175.00	16.820	293.350	6124.29	137.61	669.94	-82.22	3292169.52	1369481.96	40.3428889	-104.4518149	10.68	
6264.00	23.670	278.170	6207.80	167.70	677.60	-111.78	3292139.87	1369489.26	40.3429100	-104.4519210	9.64	
6354.00	30.250	274.630	6287.98	208.45	682.00	-152.31	3292099.30	1369493.19	40.3429220	-104.4520664	7.52	
6443.00	39.750	277.220	6360.80	259.42	687.40	-203.00	3292048.55	1369497.99	40.3429369	-104.4522482	10.80	
6532.00	48.740	283.020	6424.52	321.11	698.54	-263.97	3291987.45	1369508.40	40.3429674	-104.4524670	11.07	
6621.00	58.820	275.780	6477.08	392.52	709.95	-334.68	3291916.61	1369518.98	40.3429988	-104.4527206	13.08	
6711.00	69.180	274.170	6516.49	473.30	716.90	-415.16	3291836.06	1369524.98	40.3430178	-104.4530093	11.62	
6801.00	72.650	274.060	6545.91	558.33	723.01	-499.98	3291751.17	1369530.08	40.3430346	-104.4533136	3.86	

REFERENCE WELLPATH IDENTIFICATION				
Operator	CONFLUENCE RESOURCES		Well	SILVERTON 5-2-4L
Field	WELD COUNTY (NAD83, TRUE NORTH)		API	0512348441
Facility	SEC.04-T04N-R63W		Wellbore	SILVERTON 5-2-4L AWB
Slot	SLOT#10 SILVERTON 5-2-4L (2648'FSL & 255'FWL,SEC.04)			

WELLPATH DATA (200 stations)

MD [ft]	Inclination [°]	Azimuth [°]	TVD [ft]	Vert Sect [ft]	North [ft]	East [ft]	Grid East [US ft]	Grid North [US ft]	Latitude	Longitude	DLS [°/100ft]	Comments
6890.00	80.230	271.120	6566.77	644.72	726.88	-586.34	3291664.78	1369532.93	40.3430452	-104.4536234	9.10	
6980.00	89.510	268.400	6574.81	733.91	726.49	-675.87	3291575.26	1369531.48	40.3430441	-104.4539446	10.74	
7069.00	89.570	267.680	6575.52	822.29	723.44	-764.82	3291486.36	1369527.38	40.3430358	-104.4542637	0.81	
7159.00	89.540	267.740	6576.22	911.61	719.85	-854.74	3291396.49	1369522.72	40.3430259	-104.4545863	0.07	
7249.00	90.460	267.620	6576.22	1000.92	716.20	-944.67	3291306.62	1369518.02	40.3430159	-104.4549089	1.03	
7338.00	89.020	269.230	6576.62	1089.37	713.76	-1033.63	3291217.70	1369514.52	40.3430092	-104.4552280	2.43	
7428.00	88.060	269.410	6578.92	1178.93	712.69	-1123.59	3291127.76	1369512.39	40.3430062	-104.4555507	1.09	
7517.00	87.880	268.330	6582.07	1267.40	710.94	-1212.52	3291038.86	1369509.58	40.3430014	-104.4558697	1.23	
7607.00	87.810	271.050	6585.45	1356.98	710.45	-1302.44	3290948.95	1369508.03	40.3430000	-104.4561923	3.02	
7696.00	89.350	273.450	6587.66	1445.86	713.94	-1391.34	3290860.03	1369510.47	40.3430096	-104.4565112	3.20	
7786.00	89.420	275.650	6588.63	1535.84	721.08	-1481.04	3290770.25	1369516.55	40.3430292	-104.4568330	2.45	
7876.00	89.380	276.460	6589.57	1625.82	730.57	-1570.54	3290680.65	1369524.99	40.3430552	-104.4571541	0.90	
7965.00	90.030	275.270	6590.03	1714.80	739.67	-1659.07	3290592.02	1369533.03	40.3430802	-104.4574717	1.52	
8054.00	90.280	272.800	6589.79	1803.78	745.93	-1747.84	3290503.19	1369538.24	40.3430974	-104.4577901	2.79	
8143.00	88.740	271.020	6590.55	1892.66	748.90	-1836.78	3290414.22	1369540.16	40.3431055	-104.4581092	2.64	
8233.00	87.350	270.140	6593.62	1982.37	749.81	-1926.72	3290324.28	1369540.01	40.3431080	-104.4584318	1.83	
8323.00	87.660	271.520	6597.54	2072.07	751.11	-2016.62	3290234.37	1369540.25	40.3431115	-104.4587544	1.57	
8412.00	87.970	269.940	6600.93	2160.78	752.24	-2105.55	3290145.45	1369540.33	40.3431146	-104.4590734	1.81	
8501.00	90.030	269.170	6602.48	2249.39	751.55	-2194.53	3290056.49	1369538.58	40.3431127	-104.4593926	2.47	
8591.00	90.120	267.860	6602.36	2338.85	749.22	-2284.49	3289966.56	1369535.19	40.3431063	-104.4597153	1.46	
8680.00	90.710	268.040	6601.72	2427.22	746.04	-2373.43	3289877.66	1369530.95	40.3430975	-104.4600344	0.69	
8769.00	89.940	267.840	6601.21	2515.59	742.84	-2462.38	3289788.77	1369526.70	40.3430887	-104.4603534	0.89	
8858.00	89.660	268.020	6601.53	2603.95	739.62	-2551.32	3289699.88	1369522.44	40.3430798	-104.4606725	0.37	
8947.00	88.310	266.260	6603.10	2692.15	735.18	-2640.19	3289611.07	1369516.95	40.3430676	-104.4609913	2.49	
9037.00	87.600	271.250	6606.32	2781.57	733.23	-2730.08	3289521.21	1369513.93	40.3430622	-104.4613138	5.60	
9127.00	87.630	268.550	6610.06	2871.16	733.07	-2819.99	3289431.31	1369512.71	40.3430618	-104.4616363	3.00	
9216.00	88.520	272.360	6613.05	2959.84	733.78	-2908.92	3289342.38	1369512.37	40.3430637	-104.4619553	4.39	
9306.00	86.460	273.470	6616.99	3049.70	738.35	-2998.71	3289252.55	1369515.87	40.3430762	-104.4622775	2.60	
9395.00	86.800	273.040	6622.23	3138.51	743.39	-3087.42	3289163.79	1369519.87	40.3430900	-104.4625957	0.62	
9485.00	88.370	273.080	6626.02	3228.39	748.19	-3177.20	3289073.96	1369523.61	40.3431032	-104.4629178	1.75	

REFERENCE WELLPATH IDENTIFICATION

Operator	CONFLUENCE RESOURCES	Well	SILVERTON 5-2-4L
Field	WELD COUNTY (NAD83, TRUE NORTH)	API	0512348441
Facility	SEC.04-T04N-R63W	Wellbore	SILVERTON 5-2-4L AWB
Slot	SLOT#10 SILVERTON 5-2-4L (2648'FSL & 255'FWL,SEC.04)		

WELLPATH DATA (200 stations)

MD [ft]	Inclination [°]	Azimuth [°]	TVD [ft]	Vert Sect [ft]	North [ft]	East [ft]	Grid East [US ft]	Grid North [US ft]	Latitude	Longitude	DLS [°/100ft]	Comments
9574.00	89.200	273.070	6627.90	3317.33	752.97	-3266.06	3288985.06	1369527.33	40.3431162	-104.4632365	0.93	
9663.00	89.290	271.810	6629.08	3406.25	756.76	-3354.96	3288896.12	1369530.07	40.3431266	-104.4635555	1.42	
9753.00	89.850	271.280	6629.75	3496.10	759.18	-3444.93	3288806.13	1369531.43	40.3431332	-104.4638782	0.86	
9842.00	88.800	271.270	6630.80	3584.93	761.16	-3533.90	3288717.15	1369532.36	40.3431386	-104.4641974	1.18	
9932.00	88.770	269.950	6632.71	3674.67	762.12	-3623.87	3288627.18	1369532.25	40.3431412	-104.4645202	1.47	
10021.00	88.710	270.360	6634.67	3763.36	762.36	-3712.85	3288538.21	1369531.44	40.3431419	-104.4648393	0.47	
10110.00	88.800	268.420	6636.60	3851.94	761.41	-3801.82	3288449.26	1369529.44	40.3431392	-104.4651585	2.18	
10199.00	89.200	268.660	6638.15	3940.41	759.15	-3890.78	3288360.34	1369526.12	40.3431330	-104.4654776	0.52	
10289.00	89.200	267.410	6639.41	4029.77	756.06	-3980.71	3288270.45	1369521.97	40.3431245	-104.4658003	1.39	
10378.00	89.200	269.240	6640.65	4118.20	753.46	-4069.66	3288181.54	1369518.32	40.3431173	-104.4661194	2.06	
10467.00	89.170	269.240	6641.92	4206.78	752.28	-4158.65	3288092.58	1369516.09	40.3431140	-104.4664386	0.03	
10556.00	89.020	270.140	6643.33	4295.42	751.80	-4247.63	3288003.61	1369514.56	40.3431126	-104.4667578	1.03	
10645.00	90.340	271.770	6643.82	4384.21	753.28	-4336.61	3287914.62	1369514.99	40.3431167	-104.4670770	2.36	
10735.00	90.180	271.340	6643.41	4474.07	755.72	-4426.58	3287824.64	1369516.37	40.3431233	-104.4673998	0.51	
10824.00	89.230	271.420	6643.87	4562.91	757.87	-4515.55	3287735.65	1369517.46	40.3431292	-104.4677189	1.07	
10914.00	89.290	269.580	6645.03	4652.65	758.65	-4605.54	3287645.66	1369517.18	40.3431313	-104.4680417	2.05	
11003.00	89.110	269.800	6646.28	4741.29	758.17	-4694.53	3287556.69	1369515.64	40.3431299	-104.4683610	0.32	
11092.00	90.250	269.720	6646.77	4829.95	757.80	-4783.52	3287467.71	1369514.22	40.3431288	-104.4686802	1.28	
11182.00	90.150	267.710	6646.46	4919.44	755.78	-4873.50	3287377.77	1369511.14	40.3431232	-104.4690030	2.24	
11271.00	90.250	267.560	6646.15	5007.76	752.11	-4962.42	3287288.90	1369506.41	40.3431131	-104.4693220	0.20	
11360.00	90.250	268.150	6645.76	5096.11	748.78	-5051.36	3287200.01	1369502.03	40.3431039	-104.4696410	0.66	
11450.00	90.220	267.970	6645.39	5185.49	745.73	-5141.30	3287110.11	1369497.92	40.3430955	-104.4699637	0.20	
11540.00	90.460	268.130	6644.86	5274.87	742.67	-5231.25	3287020.21	1369493.80	40.3430870	-104.4702864	0.32	
11629.00	91.050	268.920	6643.69	5363.34	740.38	-5320.21	3286931.29	1369490.45	40.3430807	-104.4706055	1.11	
11719.00	90.990	269.820	6642.08	5452.92	739.39	-5410.19	3286841.33	1369488.40	40.3430779	-104.4709283	1.00	
11808.00	90.830	270.110	6640.67	5541.60	739.33	-5499.18	3286752.35	1369487.29	40.3430777	-104.4712475	0.37	
11898.00	90.740	271.090	6639.44	5631.35	740.27	-5589.16	3286662.37	1369487.17	40.3430803	-104.4715704	1.09	
11987.00	89.850	270.370	6638.98	5720.13	741.41	-5678.15	3286573.37	1369487.25	40.3430833	-104.4718896	1.29	
12076.00	88.680	268.770	6640.12	5808.75	740.74	-5767.14	3286484.41	1369485.53	40.3430814	-104.4722088	2.23	
12166.00	88.310	269.400	6642.48	5898.28	739.30	-5857.10	3286394.48	1369483.03	40.3430774	-104.4725315	0.81	

REFERENCE WELLPATH IDENTIFICATION				
Operator	CONFLUENCE RESOURCES		Well	SILVERTON 5-2-4L
Field	WELD COUNTY (NAD83, TRUE NORTH)		API	0512348441
Facility	SEC.04-T04N-R63W		Wellbore	SILVERTON 5-2-4L AWB
Slot	SLOT#10 SILVERTON 5-2-4L (2648'FSL & 255'FWL,SEC.04)			

WELLPATH DATA (200 stations)												
MD [ft]	Inclination [°]	Azimuth [°]	TVD [ft]	Vert Sect [ft]	North [ft]	East [ft]	Grid East [US ft]	Grid North [US ft]	Latitude	Longitude	DLS ["/100ft]	Comments
12255.00	88.000	269.510	6645.35	5986.85	738.46	-5946.05	3286305.55	1369481.14	40.3430750	-104.4728506	0.37	
12345.00	89.140	270.150	6647.60	6076.48	738.19	-6036.02	3286215.59	1369479.81	40.3430743	-104.4731734	1.45	
12435.00	88.980	270.850	6649.07	6166.22	738.98	-6126.00	3286125.61	1369479.53	40.3430764	-104.4734962	0.80	
12525.00	88.920	271.760	6650.72	6256.04	741.03	-6215.96	3286035.63	1369480.51	40.3430819	-104.4738189	1.01	
12615.00	88.550	271.730	6652.71	6345.89	743.77	-6305.90	3285945.67	1369482.19	40.3430894	-104.4741415	0.41	
12704.00	89.940	272.340	6653.88	6434.78	746.93	-6394.83	3285856.71	1369484.30	40.3430980	-104.4744606	1.71	
12793.00	89.230	271.840	6654.53	6523.68	750.17	-6483.77	3285767.75	1369486.49	40.3431068	-104.4747796	0.98	
12883.00	89.260	272.080	6655.71	6613.57	753.25	-6573.71	3285677.78	1369488.51	40.3431152	-104.4751023	0.27	
12973.00	89.540	271.330	6656.65	6703.43	755.93	-6663.66	3285587.81	1369490.12	40.3431225	-104.4754250	0.89	
13062.00	89.260	270.080	6657.59	6792.20	757.02	-6752.65	3285498.82	1369490.16	40.3431254	-104.4757442	1.44	
13151.00	90.250	270.910	6657.97	6880.95	757.79	-6841.64	3285409.82	1369489.88	40.3431275	-104.4760635	1.45	
13241.00	90.030	272.740	6657.75	6970.83	760.66	-6931.59	3285319.85	1369491.68	40.3431353	-104.4763861	2.05	
13330.00	89.780	273.200	6657.89	7059.78	765.27	-7020.47	3285230.93	1369495.24	40.3431479	-104.4767050	0.59	
13420.00	89.660	272.750	6658.33	7149.74	769.94	-7110.35	3285141.00	1369498.85	40.3431606	-104.4770274	0.52	
13510.00	89.480	272.540	6659.01	7239.68	774.09	-7200.25	3285051.06	1369501.94	40.3431719	-104.4773499	0.31	
13600.00	89.170	272.090	6660.07	7329.59	777.73	-7290.17	3284961.11	1369504.51	40.3431819	-104.4776725	0.61	
13690.00	89.230	270.830	6661.33	7419.43	780.02	-7380.13	3284871.13	1369505.74	40.3431881	-104.4779952	1.40	
13779.00	89.050	270.310	6662.66	7508.18	780.91	-7469.12	3284782.15	1369505.57	40.3431904	-104.4783145	0.62	
13869.00	89.230	268.650	6664.01	7597.78	780.09	-7559.10	3284692.18	1369503.69	40.3431881	-104.4786373	1.86	
13958.00	89.350	268.040	6665.12	7686.22	777.52	-7648.06	3284603.27	1369500.07	40.3431810	-104.4789564	0.70	
14048.00	89.480	268.710	6666.03	7775.65	774.97	-7738.01	3284513.35	1369496.45	40.3431739	-104.4792791	0.76	
14138.00	89.380	268.660	6666.93	7865.14	772.90	-7827.99	3284423.41	1369493.33	40.3431682	-104.4796019	0.12	
14227.00	89.540	270.230	6667.77	7953.75	772.04	-7916.98	3284334.45	1369491.41	40.3431657	-104.4799211	1.77	
14317.00	89.570	270.720	6668.47	8043.49	772.78	-8006.97	3284244.45	1369491.09	40.3431677	-104.4802439	0.55	
14408.00	89.570	272.210	6669.15	8134.34	775.11	-8097.93	3284153.47	1369492.34	40.3431740	-104.4805703	1.64	
14497.00	89.260	272.450	6670.06	8223.25	778.73	-8186.86	3284064.52	1369494.91	40.3431838	-104.4808893	0.44	
14586.00	89.350	272.750	6671.14	8312.18	782.77	-8275.76	3283975.58	1369497.90	40.3431948	-104.4812082	0.35	
14676.00	89.510	272.460	6672.03	8402.11	786.86	-8365.66	3283885.64	1369500.92	40.3432060	-104.4815307	0.37	
14766.00	89.320	272.230	6672.95	8492.03	790.54	-8455.58	3283795.68	1369503.54	40.3432160	-104.4818533	0.33	
14855.00	89.320	271.620	6674.01	8580.91	793.53	-8544.52	3283706.71	1369505.48	40.3432241	-104.4821724	0.69	

REFERENCE WELLPATH IDENTIFICATION				
Operator	CONFLUENCE RESOURCES		Well	SILVERTON 5-2-4L
Field	WELD COUNTY (NAD83, TRUE NORTH)		API	0512348441
Facility	SEC.04-T04N-R63W		Wellbore	SILVERTON 5-2-4L AWB
Slot	SLOT#10 SILVERTON 5-2-4L (2648'FSL & 255'FWL,SEC.04)			

WELLPATH DATA (200 stations) † = interpolated, ‡ = extrapolated station												
MD [ft]	Inclination [°]	Azimuth [°]	TVD [ft]	Vert Sect [ft]	North [ft]	East [ft]	Grid East [US ft]	Grid North [US ft]	Latitude	Longitude	DLS [°/100ft]	Comments
14944.00	89.230	271.200	6675.14	8669.75	795.72	-8633.49	3283617.73	1369506.62	40.3432300	-104.4824915	0.48	
15034.00	89.320	271.030	6676.27	8759.56	797.47	-8723.46	3283527.75	1369507.30	40.3432348	-104.4828143	0.21	
15124.00	89.420	270.880	6677.26	8849.36	798.97	-8813.45	3283437.76	1369507.74	40.3432388	-104.4831371	0.20	
15213.00	89.380	271.070	6678.20	8938.16	800.48	-8902.43	3283348.77	1369508.20	40.3432429	-104.4834563	0.22	
15303.00	89.510	271.790	6679.07	9028.00	802.73	-8992.40	3283258.78	1369509.38	40.3432489	-104.4837791	0.81	
15393.00	89.880	271.410	6679.55	9117.86	805.24	-9082.36	3283168.80	1369510.83	40.3432558	-104.4841018	0.59	
15483.00	90.220	272.680	6679.47	9207.76	808.45	-9172.30	3283078.83	1369512.98	40.3432645	-104.4844244	1.46	
15573.00	89.970	272.670	6679.32	9297.70	812.65	-9262.20	3282988.89	1369516.12	40.3432759	-104.4847470	0.28	
15662.00	89.880	272.710	6679.44	9386.64	816.83	-9351.10	3282899.95	1369519.24	40.3432873	-104.4850659	0.11	
15752.00	90.550	272.830	6679.10	9476.58	821.18	-9441.00	3282810.02	1369522.53	40.3432991	-104.4853884	0.76	
15841.00	89.850	273.580	6678.79	9565.55	826.16	-9529.86	3282721.11	1369526.45	40.3433127	-104.4857072	1.15	
15931.00	89.780	275.730	6679.08	9655.54	833.46	-9619.55	3282631.33	1369532.70	40.3433326	-104.4860289	2.39	
16020.00	89.630	276.330	6679.54	9744.52	842.81	-9708.06	3282542.73	1369541.00	40.3433582	-104.4863465	0.69	
16110.00	89.020	273.390	6680.60	9834.50	850.43	-9797.72	3282452.99	1369547.56	40.3433790	-104.4866681	3.34	
16199.00	89.230	272.850	6681.96	9923.46	855.28	-9886.58	3282364.08	1369551.35	40.3433922	-104.4869869	0.65	
16289.00	89.200	274.810	6683.19	10013.43	861.29	-9976.36	3282274.24	1369556.30	40.3434086	-104.4873090	2.18	
16379.00	89.450	271.360	6684.25	10103.37	866.13	-10066.21	3282184.34	1369560.08	40.3434218	-104.4876313	3.84	
16468.00	89.230	270.590	6685.27	10192.17	867.64	-10155.19	3282095.35	1369560.54	40.3434259	-104.4879505	0.90	
16496.00	88.920	269.470	6685.73	10220.07	867.66	-10183.19	3282067.36	1369560.23	40.3434259	-104.4880510	4.15	LAST BH MWD SURVEY
16520.00‡	88.920	269.470	6686.18	10243.96	867.44	-10207.18	3282043.37	1369559.72	40.3434253	-104.4881370	0.00	PROJECTION TO BIT

HOLE & CASING SECTIONS - Ref Wellbore: SILVERTON 5-2-4L AWB Ref Wellpath: SILVERTON 5-2-4L AWP									
String/Diameter	Start MD [ft]	End MD [ft]	Interval [ft]	Start TVD [ft]	End TVD [ft]	Start N/S [ft]	Start E/W [ft]	End N/S [ft]	End E/W [ft]
9.625in Casing Surface	23.00	1588.00	1565.00	23.00	1586.48	0.00	0.00	28.73	-3.59

REFERENCE WELLPATH IDENTIFICATION			
Operator	CONFLUENCE RESOURCES	Well	SILVERTON 5-2-4L
Field	WELD COUNTY (NAD83, TRUE NORTH)	API	0512348441
Facility	SEC.04-T04N-R63W	Wellbore	SILVERTON 5-2-4L AWB
Slot	SLOT#10 SILVERTON 5-2-4L (2648'FSL & 255'FWL,SEC.04)		

TARGETS								
Name	TVD [ft]	North [ft]	East [ft]	Grid East [US ft]	Grid North [US ft]	Latitude	Longitude	Shape
SEC.04-T04N-R63W	-2.00	222.23	2.79	3292259.81	1369035.30	40.3416600	-104.4515100	polygon
	2D Polygon: dimensions not calculated							
SEC.05&06-T04N-R63W HARDLINES 470'N/S & 470'E/W	-2.00	222.23	2.79	3292259.81	1369035.30	40.3416600	-104.4515100	polygon
	2D Polygon: dimensions not calculated							
SEC.05-T04N-R63W	-2.00	222.23	2.79	3292259.81	1369035.30	40.3416600	-104.4515100	polygon
	2D Polygon: dimensions not calculated							
SEC.06-T04N-R63W	-2.00	222.23	2.79	3292259.81	1369035.30	40.3416600	-104.4515100	polygon
	2D Polygon: dimensions not calculated							
SILVERTON 5-2-4L LP REV-1(2048'FNL & 470'FEL,SEC.05)	6576.00	732.27	-713.62	3291537.45	1369536.81	40.3430600	-104.4540800	point
SILVERTON 5-2-4L BHL REV-1 (2007'FNL & 405'FWL,SEC.06)	6709.00	778.08	-10194.11	3282057.50	1369470.53	40.3431800	-104.4880900	point
SILVERTON 5-2-4L BHL REV-2 (1935'FNL & 405'FWL,SEC.06)	6709.00	850.08	-10194.11	3282056.65	1369542.52	40.3433776	-104.4880901	point

REFERENCE WELLPATH IDENTIFICATION			
Operator	CONFLUENCE RESOURCES	Well	SILVERTON 5-2-4L
Field	WELD COUNTY (NAD83, TRUE NORTH)	API	0512348441
Facility	SEC.04-T04N-R63W	Wellbore	SILVERTON 5-2-4L AWB
Slot	SLOT#10 SILVERTON 5-2-4L (2648'FSL & 255'FWL,SEC.04)		

WELLPATH COMPOSITION - Ref Wellbore: SILVERTON 5-2-4L AWB Ref Wellpath: SILVERTON 5-2-4L AWP					
Start MD [ft]	End MD [ft]	Positional Uncertainty Model	Log Name/Comment	Wellbore	Survey Date
23.00	1528.50	OWSG MWD rev2 - Standard	OWSG MWD rev2 - Standard <110.5 - 1528.5>	SILVERTON 5-2-4L AWB	9/30/2020
1528.50	16520.00	BH AutoTrak Curve/eXpress (2019) (Short spacing)	BH AutoTrak Curve (2019) (Short spacing) <1612 - 16496>	SILVERTON 5-2-4L AWB	12/9/2020

REFERENCE WELLPATH IDENTIFICATION

Operator	CONFLUENCE RESOURCES	Well	SILVERTON 5-2-4L
Field	WELD COUNTY (NAD83, TRUE NORTH)	API	0512348441
Facility	SEC.04-T04N-R63W	Wellbore	SILVERTON 5-2-4L AWB
Slot	SLOT#10 SILVERTON 5-2-4L (2648'FSL & 255'FWL,SEC.04)		

WELLPATH COMMENTS

MD [ft]	Inclination [°]	Azimuth [°]	TVD [ft]	Comment
1528.50	6.400	348.300	1527.37	TIE TO 3RD PARTY SURFACE SURVEYS
1612.00	6.800	347.120	1610.31	FIRST BH MWD SURVEY
16496.00	88.920	269.470	6685.73	LAST BH MWD SURVEY
16520.00	88.920	269.470	6686.18	PROJECTION TO BIT