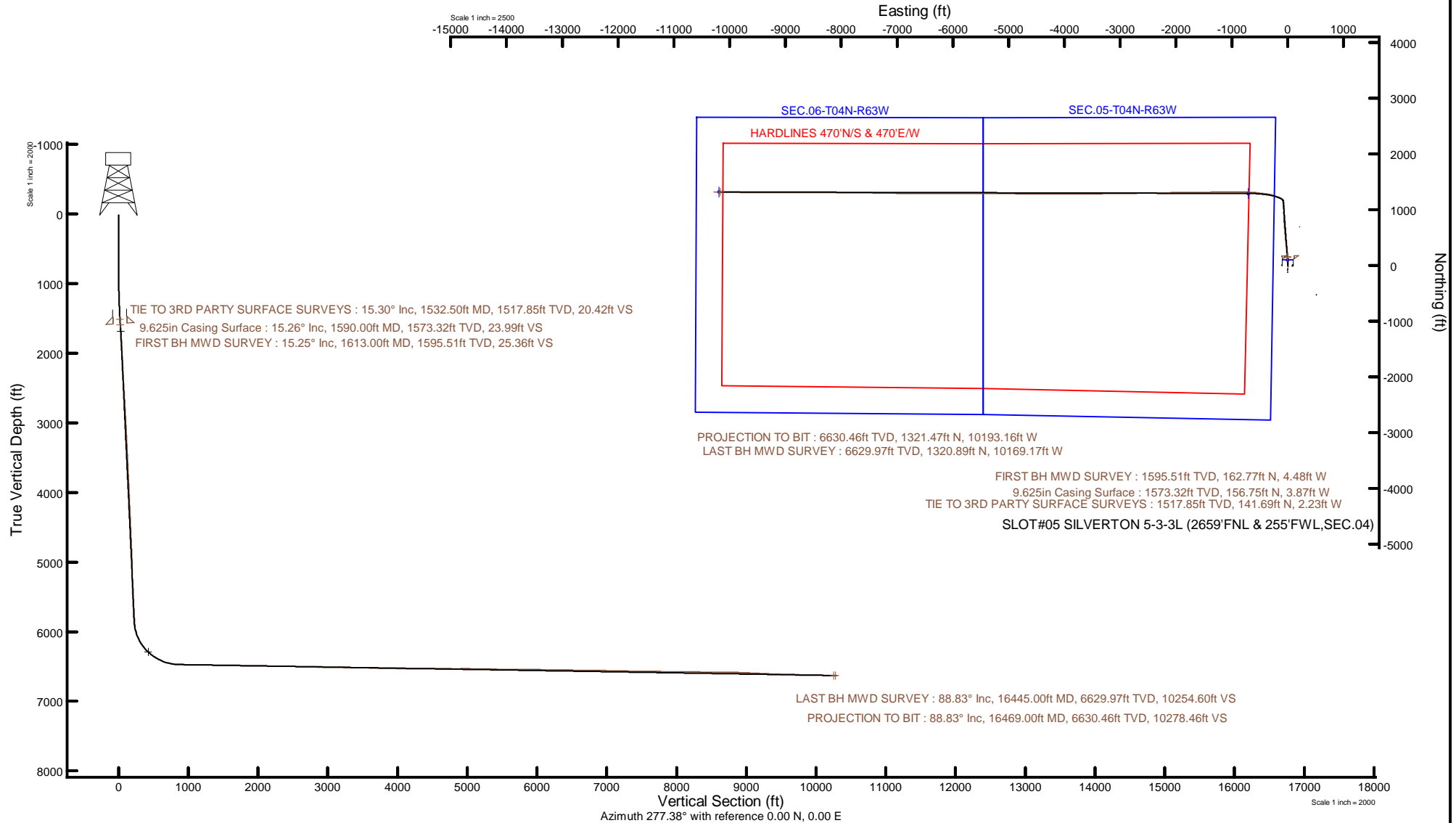


# CONFLUENCE RESOURCES

Location: COLORADO Slot: SLOT#05 SILVERTON 5-3-3L (2659'FNL & 255'FWL,SEC.04)  
 Field: WELD COUNTY (NAD83, TRUE NORTH) Well: SILVERTON 5-3-3L  
 Facility: SEC.04-T04N-R63W Wellbore: SILVERTON 5-3-3L PWB



Plot reference wellpath is SILVERTON 5-3-3L PWB Rev-C.0	Grid System: NAD83 / Lambert Colorado SP, Northern Zone (501), US feet
True vertical depths are referenced to Ensign 162 (23) (RKB)	North Reference: True north
Reference wellpath measured depths are referenced to Ensign 162 (23) (RKB)	Scale: True distance
Ensign 162 (23) (RKB) to Mean Sea Level: 4647 feet	Coordinates are in feet referenced to Slot
Mean Sea Level to Mud line (At Slot: SLOT#05 SILVERTON 5-3-3L (2659'FNL & 255'FWL,SEC.04)): 0 feet	Depths are in feet
Offset wellpath MDs are referenced to each path's default MD datum	Created by: painsetr on 2020-12-01; Database: WellArchitectDB



## REFERENCE WELLPATH IDENTIFICATION

Operator	<b>CONFLUENCE RESOURCES</b>	Well	<b>SILVERTON 5-3-3L</b>
Field	<b>WELD COUNTY (NAD83, TRUE NORTH)</b>	API	<b>0512348434</b>
Facility	<b>SEC.04-T04N-R63W</b>	Wellbore	<b>SILVERTON 5-3-3L AWB</b>
Slot	<b>SLOT#05 SILVERTON 5-3-3L (2659'FNL &amp; 255'FWL,SEC.04)</b>		

## REPORT SETUP INFORMATION

Projection System	<b>NAD83 / Lambert Colorado SP, Northern Zone (501), US feet</b>	Software System	<b>WellArchitect® 6.0</b>
North Reference	<b>True</b>	User	<b>Painsetr</b>
Scale	<b>0.999958</b>	Report Generated	<b>12/1/2020 at 3:21:44 PM</b>
Convergence at slot	<b>0.68° East</b>	Database	<b>WellArchitectDB</b>

## WELLPATH LOCATION

	Local coordinates		Grid coordinates		Geographic coordinates	
	North[ft]	East[ft]	Easting[US ft]	Northing[US ft]	Latitude	Longitude
Slot Location	-98.36	0.00	3292260.97	1368936.95	<b>40.3413900°</b>	<b>-104.4515100°</b>
Facility Reference Pt			3292259.81	1369035.30	<b>40.3416600°</b>	<b>-104.4515100°</b>
Field Reference Pt			3230456.90	1245096.09	<b>40.0032400°</b>	<b>-104.6773400°</b>

## WELLPATH DATUM

Calculation method	<b>Minimum curvature</b>	Ensign 162 (23') (RKB) to Facility Vertical Datum	<b>4647.00ft</b>
Horizontal Reference Pt	<b>Slot</b>	Ensign 162 (23') (RKB) to Mean Sea Level	<b>4647.00ft</b>
Vertical Reference Pt	<b>Ensign 162 (23') (RKB)</b>	Ensign 162 (23') (RKB) to Mud Line at Slot (SLOT#05 SILVERTON 5-3-3L (2659'FNL & 255'FWL,SEC.04))	<b>4647.00ft</b>
MD Reference Pt	<b>Ensign 162 (23') (RKB)</b>	Section Origin	<b>N 0.00, E 0.00 ft</b>
Field Vertical Reference	<b>Mean Sea Level</b>	Section Azimuth	<b>277.38°</b>

REFERENCE WELLPATH IDENTIFICATION			
Operator	CONFLUENCE RESOURCES	Well	SILVERTON 5-3-3L
Field	WELD COUNTY (NAD83, TRUE NORTH)	API	0512348434
Facility	SEC.04-T04N-R63W	Wellbore	SILVERTON 5-3-3L AWB
Slot	SLOT#05 SILVERTON 5-3-3L (2659'FNL & 255'FWL,SEC.04)		

WELLPATH DATA (200 stations) † = interpolated, ‡ = extrapolated station												
MD [ft]	Inclination [°]	Azimuth [°]	TVD [ft]	Vert Sect [ft]	North [ft]	East [ft]	Grid East [US ft]	Grid North [US ft]	Latitude	Longitude	DLS [°/100ft]	Comments
0.00†	0.000	0.000	0.00	0.00	0.00	0.00	3292260.97	1368936.95	40.3413900	-104.4515100	0.00	
23.00	0.000	0.000	23.00	0.00	0.00	0.00	3292260.97	1368936.95	40.3413900	-104.4515100	0.00	
110.50	0.000	0.000	110.50	0.00	0.00	0.00	3292260.97	1368936.95	40.3413900	-104.4515100	0.00	
215.50	0.100	353.900	215.50	0.02	0.09	-0.01	3292260.96	1368937.04	40.3413903	-104.4515100	0.10	
275.50	0.200	8.900	275.50	0.03	0.25	0.00	3292260.97	1368937.19	40.3413907	-104.4515100	0.18	
336.50	0.300	341.400	336.50	0.10	0.50	-0.03	3292260.93	1368937.45	40.3413914	-104.4515101	0.25	
426.50	0.400	350.800	426.50	0.29	1.04	-0.16	3292260.80	1368937.98	40.3413928	-104.4515106	0.13	
471.50	0.200	306.500	471.50	0.40	1.24	-0.25	3292260.71	1368938.18	40.3413934	-104.4515109	0.65	
516.50	0.200	30.000	516.50	0.44	1.35	-0.27	3292260.68	1368938.30	40.3413937	-104.4515110	0.59	
560.50	0.100	190.300	560.50	0.42	1.38	-0.24	3292260.71	1368938.33	40.3413938	-104.4515109	0.67	
605.50	0.200	195.900	605.50	0.43	1.27	-0.27	3292260.69	1368938.21	40.3413935	-104.4515110	0.22	
649.50	0.200	82.500	649.50	0.37	1.20	-0.21	3292260.74	1368938.15	40.3413933	-104.4515108	0.76	
694.50	0.300	48.100	694.50	0.21	1.29	-0.05	3292260.91	1368938.24	40.3413935	-104.4515102	0.39	
739.50	1.300	10.300	739.49	0.11	1.87	0.13	3292261.08	1368938.82	40.3413951	-104.4515095	2.40	
784.50	2.500	3.800	784.47	0.15	3.36	0.29	3292261.22	1368940.31	40.3413992	-104.4515090	2.71	
829.50	4.000	359.900	829.39	0.41	5.90	0.35	3292261.25	1368942.86	40.3414062	-104.4515087	3.37	
874.50	5.600	358.300	874.23	0.96	9.67	0.28	3292261.14	1368946.62	40.3414165	-104.4515090	3.57	
918.50	6.800	356.900	917.97	1.78	14.42	0.08	3292260.88	1368951.36	40.3414296	-104.4515097	2.75	
963.50	7.700	359.700	962.61	2.66	20.09	-0.08	3292260.65	1368957.04	40.3414451	-104.4515103	2.15	
1008.50	8.100	2.900	1007.19	3.31	26.27	0.06	3292260.72	1368963.22	40.3414621	-104.4515098	1.32	
1049.50	8.700	4.500	1047.75	3.70	32.25	0.45	3292261.04	1368969.20	40.3414785	-104.4515084	1.57	
1093.50	9.600	0.600	1091.19	4.30	39.23	0.75	3292261.26	1368976.19	40.3414977	-104.4515073	2.48	
1138.50	10.900	357.300	1135.47	5.48	47.24	0.59	3292261.00	1368984.19	40.3415197	-104.4515079	3.17	
1182.50	11.800	358.000	1178.61	6.95	55.89	0.24	3292260.55	1368992.83	40.3415434	-104.4515091	2.07	
1227.50	12.800	358.500	1222.57	8.47	65.47	-0.05	3292260.14	1369002.41	40.3415697	-104.4515102	2.23	
1272.50	13.400	0.900	1266.40	9.83	75.67	-0.10	3292259.97	1369012.61	40.3415977	-104.4515104	1.80	
1316.50	14.200	1.500	1309.13	10.95	86.16	0.12	3292260.07	1369023.10	40.3416265	-104.4515096	1.85	
1361.50	14.500	358.000	1352.73	12.44	97.31	0.07	3292259.89	1369034.25	40.3416571	-104.4515098	2.04	
1405.50	14.900	357.800	1395.29	14.28	108.47	-0.34	3292259.35	1369045.40	40.3416877	-104.4515112	0.92	
1450.50	15.200	358.000	1438.75	16.20	120.14	-0.77	3292258.78	1369057.07	40.3417198	-104.4515128	0.68	

REFERENCE WELLPATH IDENTIFICATION				
Operator	CONFLUENCE RESOURCES		Well	SILVERTON 5-3-3L
Field	WELD COUNTY (NAD83, TRUE NORTH)		API	0512348434
Facility	SEC.04-T04N-R63W		Wellbore	SILVERTON 5-3-3L AWB
Slot	SLOT#05 SILVERTON 5-3-3L (2659'FNL & 255'FWL,SEC.04)			

### WELLPATH DATA (200 stations)

MD [ft]	Inclination [°]	Azimuth [°]	TVD [ft]	Vert Sect [ft]	North [ft]	East [ft]	Grid East [US ft]	Grid North [US ft]	Latitude	Longitude	DLS [°/100ft]	Comments
1494.50	15.300	356.400	1481.20	18.25	131.70	-1.34	3292258.08	1369068.62	40.3417515	-104.4515148	0.98	
1532.50	15.300	353.400	1517.85	20.42	141.69	-2.23	3292257.07	1369078.59	40.3417789	-104.4515180	2.08	TIE TO 3RD PARTY SURFACE SURVEYS
1613.00	15.250	354.410	1595.51	25.36	162.77	-4.48	3292254.57	1369099.65	40.3418368	-104.4515261	0.34	FIRST BH MWD SURVEY
1703.00	15.540	352.780	1682.28	31.06	186.51	-7.15	3292251.62	1369123.36	40.3419020	-104.4515356	0.58	
1792.00	14.870	353.930	1768.16	36.72	209.70	-9.85	3292248.64	1369146.50	40.3419656	-104.4515453	0.83	
1882.00	12.670	354.250	1855.57	41.65	231.00	-12.06	3292246.18	1369167.78	40.3420241	-104.4515533	2.45	
1971.00	13.740	355.540	1942.22	46.04	251.25	-13.86	3292244.14	1369188.01	40.3420797	-104.4515597	1.25	
2061.00	12.950	355.440	2029.78	50.32	271.96	-15.50	3292242.26	1369208.70	40.3421365	-104.4515656	0.88	
2151.00	13.410	353.700	2117.41	54.87	292.39	-17.44	3292240.07	1369229.10	40.3421926	-104.4515726	0.67	
2240.00	13.150	356.340	2204.04	59.25	312.75	-19.22	3292238.05	1369249.43	40.3422485	-104.4515790	0.74	
2329.00	13.220	352.970	2290.69	63.72	332.95	-21.11	3292235.92	1369269.61	40.3423039	-104.4515857	0.87	
2419.00	13.420	355.200	2378.27	68.49	353.57	-23.25	3292233.55	1369290.21	40.3423605	-104.4515934	0.61	
2508.00	13.060	354.130	2464.90	72.98	373.87	-25.14	3292231.41	1369310.48	40.3424162	-104.4516002	0.49	
2597.00	13.550	353.940	2551.51	77.70	394.24	-27.27	3292229.04	1369330.82	40.3424722	-104.4516078	0.55	
2686.00	13.020	352.530	2638.13	82.70	414.55	-29.67	3292226.40	1369351.10	40.3425279	-104.4516164	0.70	
2776.00	13.860	353.040	2725.67	87.97	435.30	-32.30	3292223.53	1369371.82	40.3425849	-104.4516259	0.94	
2865.00	12.710	351.620	2812.28	93.27	455.57	-35.02	3292220.57	1369392.05	40.3426405	-104.4516356	1.34	
2955.00	13.730	357.630	2899.90	97.77	476.04	-36.90	3292218.45	1369412.49	40.3426967	-104.4516424	1.90	
3045.00	12.790	353.830	2987.50	101.91	496.61	-38.41	3292216.69	1369433.05	40.3427532	-104.4516478	1.42	
3134.00	12.610	352.740	3074.33	106.68	516.05	-40.70	3292214.17	1369452.45	40.3428065	-104.4516560	0.34	
3224.00	12.180	356.430	3162.23	110.96	535.27	-42.53	3292212.11	1369471.65	40.3428593	-104.4516626	1.00	
3313.00	12.730	353.760	3249.14	115.06	554.39	-44.18	3292210.24	1369490.75	40.3429117	-104.4516685	0.89	
3403.00	12.760	356.150	3336.92	119.33	574.16	-45.93	3292208.26	1369510.50	40.3429660	-104.4516748	0.59	
3493.00	12.990	355.520	3424.66	123.35	594.16	-47.39	3292206.56	1369530.48	40.3430209	-104.4516800	0.30	
3582.00	12.350	355.330	3511.49	127.39	613.62	-48.94	3292204.78	1369549.92	40.3430743	-104.4516856	0.72	
3672.00	14.060	355.920	3599.11	131.57	634.12	-50.50	3292202.98	1369570.40	40.3431306	-104.4516912	1.91	
3761.00	12.380	355.210	3685.74	135.73	654.41	-52.07	3292201.17	1369590.67	40.3431863	-104.4516968	1.90	
3851.00	12.500	355.630	3773.63	139.75	673.74	-53.62	3292199.39	1369609.97	40.3432394	-104.4517023	0.17	
3941.00	12.690	355.700	3861.47	143.74	693.30	-55.10	3292197.68	1369629.52	40.3432931	-104.4517077	0.21	
4030.00	12.390	356.580	3948.34	147.51	712.58	-56.40	3292196.15	1369648.78	40.3433460	-104.4517123	0.40	

REFERENCE WELLPATH IDENTIFICATION				
Operator	CONFLUENCE RESOURCES		Well	SILVERTON 5-3-3L
Field	WELD COUNTY (NAD83, TRUE NORTH)		API	0512348434
Facility	SEC.04-T04N-R63W		Wellbore	SILVERTON 5-3-3L AWB
Slot	SLOT#05 SILVERTON 5-3-3L (2659'FNL & 255'FWL,SEC.04)			

WELLPATH DATA (200 stations)												
MD [ft]	Inclination [°]	Azimuth [°]	TVD [ft]	Vert Sect [ft]	North [ft]	East [ft]	Grid East [US ft]	Grid North [US ft]	Latitude	Longitude	DLS [°/100ft]	Comments
4119.00	12.570	356.250	4035.24	151.17	731.78	-57.61	3292194.72	1369667.96	40.3433987	-104.4517167	0.22	
4209.00	12.470	355.830	4123.10	155.00	751.24	-58.95	3292193.14	1369687.41	40.3434521	-104.4517215	0.15	
4298.00	12.820	356.200	4209.94	158.84	770.68	-60.31	3292191.56	1369706.83	40.3435055	-104.4517263	0.40	
4387.00	13.050	355.820	4296.68	162.77	790.55	-61.69	3292189.94	1369726.68	40.3435600	-104.4517313	0.28	
4477.00	12.970	358.760	4384.37	166.32	810.78	-62.65	3292188.74	1369746.90	40.3436155	-104.4517348	0.74	
4567.00	12.990	356.190	4472.07	169.80	830.97	-63.54	3292187.61	1369767.08	40.3436710	-104.4517380	0.64	
4656.00	13.270	355.990	4558.75	173.76	851.14	-64.92	3292185.99	1369787.23	40.3437263	-104.4517429	0.32	
4746.00	12.960	358.100	4646.40	177.43	871.54	-65.98	3292184.69	1369807.60	40.3437823	-104.4517467	0.63	
4835.00	13.040	356.850	4733.12	180.87	891.54	-66.86	3292183.58	1369827.59	40.3438372	-104.4517499	0.33	
4924.00	12.920	357.130	4819.84	184.48	911.50	-67.91	3292182.29	1369847.54	40.3438920	-104.4517536	0.15	
5013.00	12.790	356.650	4906.61	188.09	931.27	-68.99	3292180.98	1369867.30	40.3439463	-104.4517575	0.19	
5103.00	12.400	0.180	4994.45	191.15	950.88	-69.54	3292180.20	1369886.90	40.3440001	-104.4517595	0.96	
5192.00	12.710	2.370	5081.32	193.21	970.22	-69.10	3292180.40	1369906.24	40.3440532	-104.4517579	0.64	
5282.00	12.910	357.730	5169.08	195.76	990.16	-69.09	3292180.18	1369926.17	40.3441079	-104.4517579	1.16	
5371.00	12.250	6.420	5255.95	197.58	1009.47	-68.43	3292180.61	1369945.50	40.3441609	-104.4517555	2.25	
5461.00	13.110	356.010	5343.77	199.76	1029.15	-68.07	3292180.74	1369965.17	40.3442149	-104.4517542	2.71	
5550.00	12.400	359.840	5430.57	203.00	1048.77	-68.80	3292179.78	1369984.79	40.3442688	-104.4517568	1.24	
5640.00	12.810	357.850	5518.41	205.92	1068.41	-69.20	3292179.14	1370004.41	40.3443227	-104.4517583	0.66	
5729.00	14.580	358.370	5604.87	209.31	1089.47	-69.89	3292178.21	1370025.46	40.3443805	-104.4517607	1.99	
5819.00	14.100	357.860	5692.07	212.90	1111.74	-70.62	3292177.21	1370047.73	40.3444417	-104.4517634	0.55	
5908.00	14.220	357.020	5778.36	216.66	1133.49	-71.60	3292175.98	1370069.47	40.3445014	-104.4517668	0.27	
5998.00	14.800	352.940	5865.50	221.52	1155.94	-73.58	3292173.73	1370091.89	40.3445630	-104.4517740	1.31	
6087.00	14.710	316.330	5951.74	233.16	1175.44	-82.80	3292164.28	1370111.27	40.3446165	-104.4518071	10.31	
6176.00	21.240	298.150	6036.42	257.07	1191.25	-104.86	3292142.04	1370126.82	40.3446599	-104.4518862	9.59	
6266.00	28.420	292.520	6118.06	293.04	1207.16	-139.07	3292107.65	1370142.33	40.3447036	-104.4520089	8.39	
6355.00	35.410	292.570	6193.56	338.42	1225.19	-182.50	3292064.01	1370159.84	40.3447531	-104.4521647	7.85	
6444.00	44.640	291.990	6261.64	393.69	1246.84	-235.41	3292010.84	1370180.87	40.3448125	-104.4523545	10.38	
6534.00	51.550	286.960	6321.73	459.14	1269.00	-298.54	3291947.46	1370202.27	40.3448733	-104.4525810	8.73	
6623.00	58.740	276.750	6372.65	531.76	1283.68	-369.87	3291875.97	1370216.11	40.3449136	-104.4528369	12.39	
6712.00	65.020	276.240	6414.58	610.21	1292.55	-447.82	3291797.92	1370224.05	40.3449379	-104.4531165	7.07	

REFERENCE WELLPATH IDENTIFICATION				
Operator	CONFLUENCE RESOURCES		Well	SILVERTON 5-3-3L
Field	WELD COUNTY (NAD83, TRUE NORTH)		API	0512348434
Facility	SEC.04-T04N-R63W		Wellbore	SILVERTON 5-3-3L AWB
Slot	SLOT#05 SILVERTON 5-3-3L (2659'FNL & 255'FWL,SEC.04)			

### WELLPATH DATA (200 stations)

MD [ft]	Inclination [°]	Azimuth [°]	TVD [ft]	Vert Sect [ft]	North [ft]	East [ft]	Grid East [US ft]	Grid North [US ft]	Latitude	Longitude	DLS [°/100ft]	Comments
6802.00	74.370	277.040	6445.78	694.51	1302.31	-531.57	3291714.07	1370232.83	40.3449647	-104.4534170	10.42	
6891.00	81.600	274.230	6464.30	781.45	1310.83	-618.13	3291627.41	1370240.32	40.3449881	-104.4537275	8.69	
6980.00	88.250	273.200	6472.16	869.87	1316.56	-706.55	3291538.94	1370245.01	40.3450038	-104.4540447	7.56	
7070.00	88.980	269.500	6474.34	959.33	1318.68	-796.48	3291448.99	1370246.06	40.3450096	-104.4543673	4.19	
7160.00	89.480	269.690	6475.55	1048.49	1318.04	-886.47	3291359.02	1370244.36	40.3450079	-104.4546902	0.59	
7249.00	89.140	269.610	6476.62	1136.68	1317.50	-975.46	3291270.04	1370242.77	40.3450064	-104.4550094	0.39	
7339.00	88.740	269.730	6478.29	1225.85	1316.98	-1065.44	3291180.08	1370241.18	40.3450050	-104.4553322	0.46	
7428.00	89.510	269.520	6479.65	1314.02	1316.40	-1154.43	3291091.11	1370239.55	40.3450033	-104.4556515	0.90	
7518.00	88.520	269.710	6481.19	1403.18	1315.80	-1244.41	3291001.14	1370237.88	40.3450017	-104.4559743	1.12	
7608.00	89.540	269.430	6482.72	1492.33	1315.12	-1334.40	3290911.18	1370236.14	40.3449998	-104.4562971	1.18	
7697.00	89.480	269.990	6483.48	1580.53	1314.67	-1423.39	3290822.20	1370234.64	40.3449986	-104.4566164	0.63	
7787.00	88.890	269.580	6484.76	1669.73	1314.33	-1513.38	3290732.22	1370233.24	40.3449976	-104.4569392	0.80	
7877.00	88.250	268.720	6487.00	1758.78	1313.00	-1603.34	3290642.29	1370230.84	40.3449939	-104.4572619	1.19	
7966.00	87.970	268.960	6489.94	1846.74	1311.20	-1692.28	3290553.38	1370227.99	40.3449890	-104.4575810	0.41	
8055.00	88.710	269.470	6492.52	1934.80	1309.98	-1781.23	3290464.45	1370225.72	40.3449856	-104.4579001	1.01	
8145.00	90.400	268.390	6493.22	2023.81	1308.30	-1871.21	3290374.51	1370222.97	40.3449810	-104.4582229	2.23	
8234.00	89.540	270.050	6493.26	2111.91	1307.09	-1960.20	3290285.54	1370220.71	40.3449776	-104.4585421	2.10	
8323.00	88.980	269.650	6494.41	2200.13	1306.85	-2049.19	3290196.57	1370219.42	40.3449770	-104.4588614	0.77	
8413.00	89.820	269.440	6495.35	2289.29	1306.14	-2139.18	3290106.59	1370217.65	40.3449750	-104.4591842	0.96	
8502.00	88.890	269.580	6496.36	2377.44	1305.38	-2228.17	3290017.62	1370215.83	40.3449729	-104.4595035	1.06	
8592.00	88.620	268.960	6498.31	2466.52	1304.23	-2318.14	3289927.67	1370213.62	40.3449697	-104.4598262	0.75	
8681.00	88.860	269.280	6500.27	2554.57	1302.86	-2407.11	3289838.73	1370211.20	40.3449659	-104.4601454	0.45	
8770.00	88.770	269.230	6502.11	2642.66	1301.71	-2496.08	3289749.78	1370209.00	40.3449627	-104.4604646	0.12	
8860.00	88.860	269.200	6503.97	2731.73	1300.47	-2586.05	3289659.84	1370206.70	40.3449593	-104.4607874	0.11	
8949.00	88.150	268.420	6506.29	2819.70	1298.63	-2675.00	3289570.92	1370203.80	40.3449542	-104.4611065	1.18	
9038.00	88.860	269.370	6508.62	2907.70	1296.91	-2763.95	3289482.00	1370201.03	40.3449495	-104.4614256	1.33	
9127.00	88.950	269.150	6510.32	2995.79	1295.76	-2852.93	3289393.05	1370198.83	40.3449463	-104.4617448	0.27	
9217.00	89.320	269.300	6511.67	3084.87	1294.54	-2942.91	3289303.09	1370196.55	40.3449429	-104.4620676	0.44	
9307.00	89.290	269.400	6512.77	3173.98	1293.52	-3032.90	3289213.12	1370194.47	40.3449401	-104.4623904	0.12	
9396.00	88.920	269.270	6514.16	3262.09	1292.49	-3121.88	3289124.16	1370192.38	40.3449373	-104.4627096	0.44	

### REFERENCE WELLPATH IDENTIFICATION

Operator	CONFLUENCE RESOURCES	Well	SILVERTON 5-3-3L
Field	WELD COUNTY (NAD83, TRUE NORTH)	API	0512348434
Facility	SEC.04-T04N-R63W	Wellbore	SILVERTON 5-3-3L AWB
Slot	SLOT#05 SILVERTON 5-3-3L (2659'FNL & 255'FWL,SEC.04)		

### WELLPATH DATA (200 stations)

MD [ft]	Inclination [°]	Azimuth [°]	TVD [ft]	Vert Sect [ft]	North [ft]	East [ft]	Grid East [US ft]	Grid North [US ft]	Latitude	Longitude	DLS ["/100ft]	Comments
9486.00	89.260	269.280	6515.59	3351.18	1291.35	-3211.86	3289034.20	1370190.18	40.3449341	-104.4630324	0.38	
9575.00	88.950	269.170	6516.98	3439.27	1290.15	-3300.84	3288945.25	1370187.92	40.3449308	-104.4633516	0.37	
9664.00	88.800	269.020	6518.72	3527.32	1288.74	-3389.82	3288856.30	1370185.47	40.3449269	-104.4636708	0.24	
9753.00	88.830	268.650	6520.56	3615.31	1286.93	-3478.78	3288767.37	1370182.61	40.3449219	-104.4639900	0.42	
9843.00	89.140	269.200	6522.16	3704.32	1285.25	-3568.75	3288677.43	1370179.85	40.3449172	-104.4643127	0.70	
9933.00	89.010	270.140	6523.61	3793.49	1284.73	-3658.73	3288587.46	1370178.27	40.3449157	-104.4646356	1.05	
10022.00	88.860	270.030	6525.27	3881.76	1284.86	-3747.72	3288498.49	1370177.35	40.3449161	-104.4649548	0.21	
10111.00	89.320	270.210	6526.68	3970.03	1285.05	-3836.71	3288409.51	1370176.49	40.3449165	-104.4652740	0.56	
10200.00	89.230	270.310	6527.81	4058.34	1285.45	-3925.70	3288320.52	1370175.84	40.3449176	-104.4655933	0.15	
10289.00	89.050	270.150	6529.14	4146.63	1285.81	-4014.69	3288231.54	1370175.14	40.3449186	-104.4659125	0.27	
10379.00	88.890	270.160	6530.76	4235.90	1286.05	-4104.67	3288141.56	1370174.32	40.3449192	-104.4662353	0.18	
10468.00	90.120	270.490	6531.53	4324.22	1286.56	-4193.67	3288052.57	1370173.77	40.3449205	-104.4665546	1.43	
10557.00	89.350	269.870	6531.94	4412.52	1286.84	-4282.66	3287963.58	1370173.00	40.3449212	-104.4668739	1.11	
10646.00	89.720	270.120	6532.66	4500.78	1286.83	-4371.66	3287874.59	1370171.94	40.3449212	-104.4671931	0.50	
10736.00	89.970	270.290	6532.91	4590.07	1287.15	-4461.66	3287784.60	1370171.20	40.3449220	-104.4675160	0.34	
10825.00	90.030	270.280	6532.91	4678.39	1287.59	-4550.66	3287695.61	1370170.59	40.3449232	-104.4678353	0.07	
10914.00	89.380	270.280	6533.36	4766.70	1288.03	-4639.66	3287606.61	1370169.97	40.3449243	-104.4681546	0.73	
11004.00	90.220	270.380	6533.68	4856.02	1288.55	-4729.65	3287516.62	1370169.43	40.3449257	-104.4684774	0.94	
11093.00	90.310	270.500	6533.27	4944.37	1289.23	-4818.65	3287427.63	1370169.06	40.3449275	-104.4687967	0.17	
11183.00	89.510	270.650	6533.41	5033.73	1290.13	-4908.64	3287337.63	1370168.90	40.3449300	-104.4691196	0.90	
11272.00	88.680	269.990	6534.81	5122.05	1290.63	-4997.63	3287248.65	1370168.34	40.3449313	-104.4694388	1.19	
11361.00	89.050	270.060	6536.58	5210.29	1290.67	-5086.61	3287159.68	1370167.33	40.3449314	-104.4697580	0.42	
11451.00	88.990	270.150	6538.12	5299.56	1290.83	-5176.60	3287069.70	1370166.43	40.3449318	-104.4700808	0.12	
11541.00	89.140	270.340	6539.58	5388.85	1291.22	-5266.59	3286979.72	1370165.75	40.3449328	-104.4704037	0.27	
11630.00	89.350	270.200	6540.76	5477.15	1291.64	-5355.58	3286890.73	1370165.12	40.3449339	-104.4707229	0.28	
11720.00	89.540	270.320	6541.63	5566.46	1292.05	-5445.57	3286800.74	1370164.46	40.3449349	-104.4710458	0.25	
11809.00	89.420	270.490	6542.44	5654.79	1292.67	-5534.57	3286711.75	1370164.04	40.3449366	-104.4713650	0.23	
11898.00	89.320	270.210	6543.41	5743.12	1293.22	-5623.56	3286622.76	1370163.53	40.3449380	-104.4716843	0.33	
11988.00	89.780	270.340	6544.12	5832.42	1293.65	-5713.55	3286532.77	1370162.90	40.3449392	-104.4720071	0.53	
12077.00	89.080	270.110	6545.01	5920.72	1294.00	-5802.55	3286443.78	1370162.20	40.3449401	-104.4723264	0.83	

REFERENCE WELLPATH IDENTIFICATION				
Operator	CONFLUENCE RESOURCES		Well	SILVERTON 5-3-3L
Field	WELD COUNTY (NAD83, TRUE NORTH)		API	0512348434
Facility	SEC.04-T04N-R63W		Wellbore	SILVERTON 5-3-3L AWB
Slot	SLOT#05 SILVERTON 5-3-3L (2659'FNL & 255'FWL,SEC.04)			

### WELLPATH DATA (200 stations)

MD [ft]	Inclination [°]	Azimuth [°]	TVD [ft]	Vert Sect [ft]	North [ft]	East [ft]	Grid East [US ft]	Grid North [US ft]	Latitude	Longitude	DLS ["/100ft]	Comments
12167.00	89.420	270.280	6546.18	6010.01	1294.31	-5892.54	3286353.80	1370161.44	40.3449408	-104.4726493	0.42	
12256.00	88.950	269.990	6547.45	6098.29	1294.52	-5981.53	3286264.81	1370160.60	40.3449414	-104.4729685	0.62	
12346.00	89.230	270.160	6548.88	6187.55	1294.63	-6071.52	3286174.84	1370159.65	40.3449416	-104.4732913	0.36	
12435.00	89.420	270.110	6549.93	6275.83	1294.84	-6160.51	3286085.85	1370158.81	40.3449421	-104.4736106	0.22	
12525.00	89.020	270.220	6551.15	6365.11	1295.10	-6250.50	3285995.87	1370158.00	40.3449428	-104.4739334	0.46	
12615.00	89.080	270.120	6552.65	6454.38	1295.37	-6340.49	3285905.89	1370157.20	40.3449435	-104.4742563	0.13	
12705.00	89.230	270.250	6553.97	6543.66	1295.66	-6430.48	3285815.90	1370156.43	40.3449442	-104.4745791	0.22	
12794.00	89.170	270.250	6555.22	6631.97	1296.05	-6519.47	3285726.92	1370155.77	40.3449452	-104.4748983	0.07	
12883.00	89.140	269.790	6556.53	6720.22	1296.08	-6608.46	3285637.94	1370154.75	40.3449452	-104.4752176	0.52	
12973.00	89.570	270.080	6557.54	6809.46	1295.98	-6698.46	3285547.95	1370153.58	40.3449449	-104.4755404	0.58	
13063.00	89.290	269.900	6558.44	6898.70	1295.96	-6788.45	3285457.97	1370152.50	40.3449448	-104.4758633	0.37	
13152.00	88.650	270.300	6560.04	6986.97	1296.12	-6877.44	3285368.99	1370151.60	40.3449451	-104.4761825	0.85	
13242.00	88.740	270.940	6562.09	7076.32	1297.09	-6967.41	3285279.02	1370151.51	40.3449477	-104.4765053	0.72	
13331.00	89.080	271.080	6563.78	7164.75	1298.66	-7056.38	3285190.04	1370152.03	40.3449520	-104.4768245	0.41	
13421.00	88.550	271.140	6565.64	7254.20	1300.40	-7146.34	3285100.07	1370152.71	40.3449567	-104.4771472	0.59	
13511.00	88.580	271.050	6567.89	7343.63	1302.12	-7236.30	3285010.10	1370153.36	40.3449613	-104.4774699	0.11	
13601.00	89.720	271.390	6569.23	7433.10	1304.04	-7326.26	3284920.12	1370154.22	40.3449665	-104.4777927	1.32	
13690.00	89.260	271.100	6570.02	7521.58	1305.97	-7415.24	3284831.13	1370155.10	40.3449717	-104.4781119	0.61	
13780.00	89.290	269.910	6571.16	7610.92	1306.76	-7505.23	3284741.15	1370154.83	40.3449738	-104.4784347	1.32	
13870.00	89.230	270.010	6572.32	7700.16	1306.70	-7595.22	3284651.17	1370153.70	40.3449736	-104.4787576	0.13	
13959.00	89.200	270.080	6573.54	7788.43	1306.77	-7684.21	3284562.18	1370152.72	40.3449737	-104.4790768	0.09	
14048.00	89.420	270.190	6574.61	7876.71	1306.98	-7773.20	3284473.20	1370151.88	40.3449742	-104.4793961	0.28	
14138.00	89.540	270.070	6575.43	7965.98	1307.18	-7863.20	3284383.21	1370151.02	40.3449747	-104.4797189	0.19	
14228.00	89.320	269.960	6576.33	8055.24	1307.21	-7953.20	3284293.22	1370149.98	40.3449747	-104.4800418	0.27	
14318.00	88.990	269.900	6577.65	8144.47	1307.10	-8043.19	3284203.25	1370148.80	40.3449743	-104.4803646	0.37	
14408.00	89.350	270.030	6578.96	8233.70	1307.04	-8133.18	3284113.27	1370147.68	40.3449741	-104.4806875	0.43	
14498.00	89.420	270.100	6579.92	8322.97	1307.15	-8223.17	3284023.28	1370146.72	40.3449743	-104.4810103	0.11	
14587.00	89.480	270.420	6580.78	8411.27	1307.55	-8312.17	3283934.29	1370146.07	40.3449753	-104.4813296	0.37	
14676.00	89.660	270.200	6581.45	8499.59	1308.03	-8401.16	3283845.30	1370145.50	40.3449765	-104.4816488	0.32	
14766.00	89.780	270.340	6581.89	8588.90	1308.46	-8491.16	3283755.31	1370144.86	40.3449776	-104.4819717	0.20	

### REFERENCE WELLPATH IDENTIFICATION

Operator	CONFLUENCE RESOURCES	Well	SILVERTON 5-3-3L
Field	WELD COUNTY (NAD83, TRUE NORTH)	API	0512348434
Facility	SEC.04-T04N-R63W	Wellbore	SILVERTON 5-3-3L AWB
Slot	SLOT#05 SILVERTON 5-3-3L (2659'FNL & 255'FWL,SEC.04)		

### WELLPATH DATA (200 stations) † = interpolated, ‡ = extrapolated station

MD [ft]	Inclination [°]	Azimuth [°]	TVD [ft]	Vert Sect [ft]	North [ft]	East [ft]	Grid East [US ft]	Grid North [US ft]	Latitude	Longitude	DLS [°/100ft]	Comments
14856.00	89.820	270.400	6582.20	8678.23	1309.04	-8581.16	3283665.31	1370144.38	40.3449791	-104.4822946	0.08	
14946.00	89.450	270.580	6582.77	8767.57	1309.81	-8671.15	3283575.32	1370144.08	40.3449811	-104.4826174	0.46	
15035.00	87.630	270.250	6585.04	8855.88	1310.45	-8760.12	3283486.36	1370143.68	40.3449828	-104.4829366	2.08	
15124.00	87.450	269.910	6588.86	8944.08	1310.57	-8849.03	3283397.45	1370142.75	40.3449831	-104.4832556	0.43	
15214.00	87.380	270.020	6592.92	9033.24	1310.52	-8938.94	3283307.55	1370141.63	40.3449828	-104.4835781	0.14	
15303.00	87.510	269.980	6596.89	9121.41	1310.52	-9027.85	3283218.65	1370140.58	40.3449828	-104.4838971	0.15	
15393.00	87.380	270.010	6600.90	9210.58	1310.51	-9117.76	3283128.75	1370139.51	40.3449826	-104.4842196	0.15	
15483.00	87.260	269.870	6605.11	9299.72	1310.42	-9207.67	3283038.86	1370138.35	40.3449823	-104.4845422	0.20	
15573.00	87.350	269.940	6609.34	9388.85	1310.27	-9297.57	3282948.97	1370137.14	40.3449818	-104.4848647	0.13	
15663.00	87.450	270.010	6613.42	9478.01	1310.23	-9387.47	3282859.07	1370136.04	40.3449816	-104.4851872	0.14	
15753.00	88.060	269.850	6616.95	9567.18	1310.12	-9477.40	3282769.16	1370134.87	40.3449812	-104.4855098	0.70	
15842.00	89.720	270.050	6618.67	9655.41	1310.04	-9566.38	3282680.19	1370133.74	40.3449809	-104.4858290	1.88	
15931.00	88.770	271.170	6619.84	9743.78	1310.99	-9655.37	3282591.20	1370133.63	40.3449834	-104.4861483	1.65	
16021.00	89.230	271.440	6621.42	9833.26	1313.04	-9745.33	3282501.22	1370134.62	40.3449889	-104.4864710	0.59	
16110.00	88.920	271.290	6622.85	9921.76	1315.16	-9834.29	3282412.25	1370135.68	40.3449946	-104.4867902	0.39	
16200.00	88.800	270.850	6624.64	10011.20	1316.84	-9924.26	3282322.27	1370136.30	40.3449992	-104.4871129	0.51	
16290.00	88.770	270.770	6626.55	10100.59	1318.11	-10014.23	3282232.29	1370136.51	40.3450025	-104.4874357	0.09	
16379.00	88.680	271.020	6628.53	10188.99	1319.50	-10103.20	3282143.32	1370136.85	40.3450063	-104.4877549	0.30	
16445.00	88.830	271.390	6629.97	10254.60	1320.89	-10169.17	3282077.34	1370137.45	40.3450100	-104.4879915	0.60	LAST BH MWD SURVEY
16469.00‡	88.830	271.390	6630.46	10278.46	1321.47	-10193.16	3282053.35	1370137.75	40.3450116	-104.4880776	0.00	PROJECTION TO BIT

### HOLE & CASING SECTIONS - Ref Wellbore: SILVERTON 5-3-3L AWB Ref Wellpath: SILVERTON 5-3-3L AWP

String/Diameter	Start MD [ft]	End MD [ft]	Interval [ft]	Start TVD [ft]	End TVD [ft]	Start N/S [ft]	Start E/W [ft]	End N/S [ft]	End E/W [ft]
9.625in Casing Surface	23.00	1590.00	1567.00	23.00	1573.32	0.00	0.00	156.75	-3.87

### REFERENCE WELLPATH IDENTIFICATION

Operator	CONFLUENCE RESOURCES	Well	SILVERTON 5-3-3L
Field	WELD COUNTY (NAD83, TRUE NORTH)	API	0512348434
Facility	SEC.04-T04N-R63W	Wellbore	SILVERTON 5-3-3L AWB
Slot	SLOT#05 SILVERTON 5-3-3L (2659'FNL & 255'FWL,SEC.04)		

### TARGETS

Name	TVD [ft]	North [ft]	East [ft]	Grid East [US ft]	Grid North [US ft]	Latitude	Longitude	Shape
SEC.04-T04N-R63W	-3.00	98.36	0.00	3292259.81	1369035.30	40.3416600	-104.4515100	polygon
	2D Polygon: dimensions not calculated							
SEC.05&06-T04N-R63W HARDLINES 470'N/S & 470'E/W	-3.00	98.36	0.00	3292259.81	1369035.30	40.3416600	-104.4515100	polygon
	2D Polygon: dimensions not calculated							
SEC.05-T04N-R63W	-3.00	98.36	0.00	3292259.81	1369035.30	40.3416600	-104.4515100	polygon
	2D Polygon: dimensions not calculated							
SEC.06-T04N-R63W	-3.00	98.36	0.00	3292259.81	1369035.30	40.3416600	-104.4515100	polygon
	2D Polygon: dimensions not calculated							
SILVERTON 5-3-3L LP REV-1(1363'FNL & 470'FEL,SEC.05)	6472.00	1293.31	-705.23	3291540.53	1370221.77	40.3449400	-104.4540400	point
SILVERTON 5-3-3L BHL REV-1 (1340'FNL & 405'FWL,SEC.06)	6630.00	1320.90	-10193.83	3282052.68	1370137.17	40.3450100	-104.4880800	point

### WELLPATH COMPOSITION - Ref Wellbore: SILVERTON 5-3-3L AWB Ref Wellpath: SILVERTON 5-3-3L AWP

Start MD [ft]	End MD [ft]	Positional Uncertainty Model	Log Name/Comment	Wellbore	Survey Date
23.00	1532.50	OWSG MWD rev2 - Standard	OWSG MWD rev2 - Standard <110.5 - 1532.5>	SILVERTON 5-3-3L AWB	9/30/2020
1532.50	16469.00	BH AutoTrak Curve/eXpress (2019) (Short spacing)	BH AutoTrak Curve (2019) (Short spacing) <1613 - 16445>	SILVERTON 5-3-3L AWB	11/28/2020

## REFERENCE WELLPATH IDENTIFICATION

Operator	CONFLUENCE RESOURCES	Well	SILVERTON 5-3-3L
Field	WELD COUNTY (NAD83, TRUE NORTH)	API	0512348434
Facility	SEC.04-T04N-R63W	Wellbore	SILVERTON 5-3-3L AWB
Slot	SLOT#05 SILVERTON 5-3-3L (2659'FNL & 255'FWL,SEC.04)		

## WELLPATH COMMENTS

MD [ft]	Inclination [°]	Azimuth [°]	TVD [ft]	Comment
1532.50	15.300	353.400	1517.85	TIE TO 3RD PARTY SURFACE SURVEYS
1613.00	15.250	354.410	1595.51	FIRST BH MWD SURVEY
16445.00	88.830	271.390	6629.97	LAST BH MWD SURVEY
16469.00	88.830	271.390	6630.46	PROJECTION TO BIT