



RESERVOIR GROUP

Scale: 5" / 100'
Measured Depth Log

Well Name Silverton 5-3-3L

Location Sec:4 Twp:4N R:63W

State Colorado

Country USA

API Number 05123484340000

Geographic Region Rockies

Spud Date 3/2/2020

Surface Coordinates Lat/Long: 40.34139/-104.45151

SHL: Sec:4 Twp:4N Range:63W

Footage: 2,659' FNL 255 FWL

Bottom Hole Coordinates Proposed BHL: Sec:6 Twp:4N Range:63W

Footages: 1,338' FNL 470' FWL

Ground Elevation 4,624

Logged Interval 6,450' To 16,469'

Formation C Chalk

Type of Drilling Fluid Oil Based Mud

K.B. Elevation 4,647

Total Depth 16,469'

Operator

Company Confluence Resources LP

Address 1001 17th St, Suite 1250
Denver, CO 80202



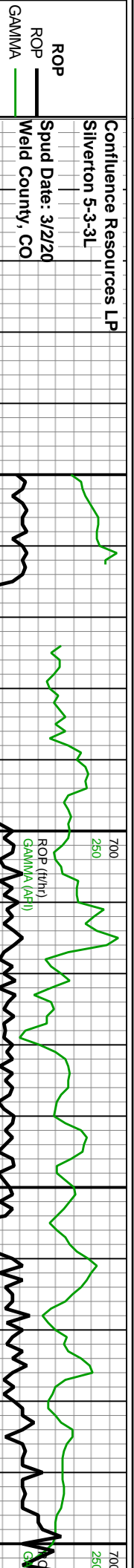
Geologist

Name Aryn Rowe, Chantel Lines

Company Confluence Resources

Address 1001 17th St, Suite 1250
Denver, CO 80202





ROP
 ROP —
 GAMMA —

Confluence Resources LP
 Silvertown 5-3-3L
 Spud Date: 3/2/20
 Weld County, CO
 Surface Casing @ 1,674'
 All Depths Correspond to Driller's Pipe Tally

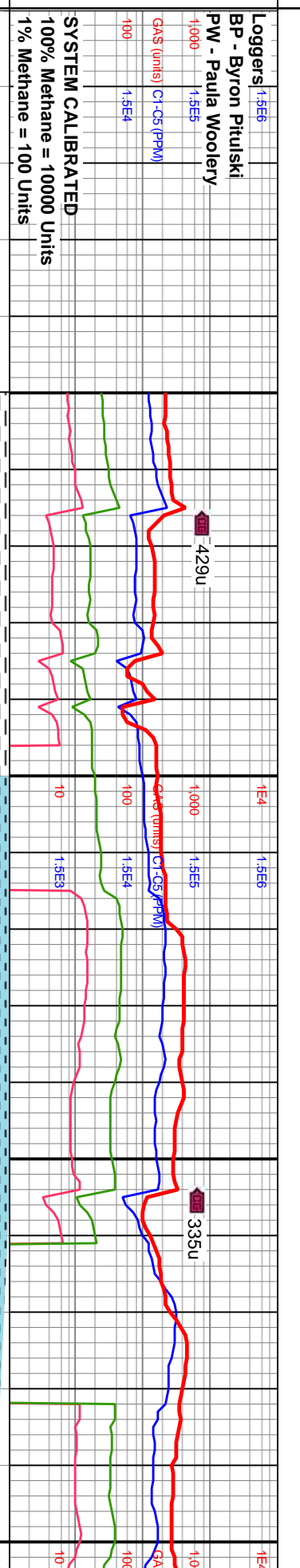
Slide/Rotate
 Depth Labels
 6,410 6,420 6,430 6,440 6,450 6,460 6,470 6,480 6,490 6,500 6,510 6,520 6,530 6,540 6,550 6,560 6,570 6,580 6,590 6,600

MMW IN: 9.6+
 VIS IN: 45
 MMW OUT: 9.6+
 VIS OUT: 43

NIO A
 6.516WMD / 6.310TVD
 MD: 6.534'
 INC: 51.55°
 AZM: 286.98°
 TVD: 6.321.73'
 VS: 459.07'

MOB: 23.9kbs
 RPM: 119
 SPM: 202
 SPP: 3.544psi

Notes



Loggers' 1.5E6
 BP - Byron Pitulski
 PW - Paula Woolery
 Total Gas
 GAS (units) C1-C5 (PPM)
 1.000 1.5E5
 100 1.5E4
 SYSTEM CALIBRATED
 100% Methane = 10000 Units
 1% Methane = 100 Units

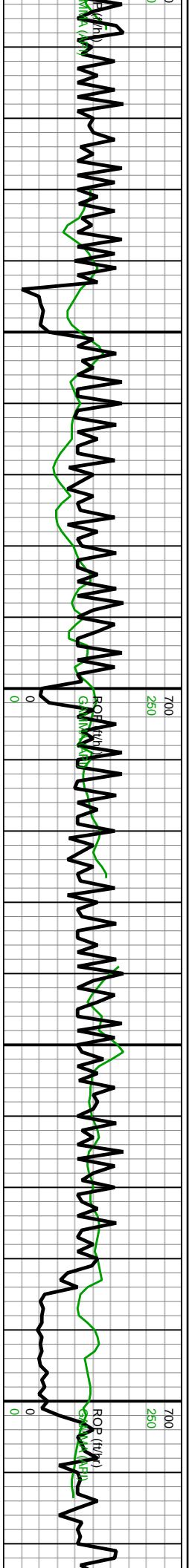
Bit #: 1
 Type: ATD505T
 Size: 8 1/2
 Depth In: 1,602'
 Jets: 5X15
 S/N: 5311848

Well Bore	TVD (ft)	6470-6500 SLTST	6500-6530 CHK (60%)	6530-6560 CHK	6560-6590 CHK	6590-6660
		(5%): dk brn dk gry sli frm sli hd sbiky ply SH (95%): dk gry dk brn blk sli hd v hd blk sbiky sbiky ply filky vf lam ip v sily tr vfd gmlr pyr	It med brn lt gry mott sli frm-britt tr vf lam med-hi calc mod drusy pyr MRLST (40%): pred dk gry lt dk brn mott frm sli hd blk sbiky mod calc	(15%): lt med brn lt gry mott sli frm-britt tr vf lam med-hi calc mod drusy pyr MRLST (85%): pred dk gry lt dk brn mott frm sli hd blk sbiky mod calc	(25%): lt med brn lt gry mott sli frm-britt tr vf lam med-hi calc mod fd gmlr pyr MRLST (75%): pred dk gry lt gry lt dk brn mott v frm sli hd blk sbiky mod calc	med brn sli frm sme v c MRLST gry dk b hd blk y calc

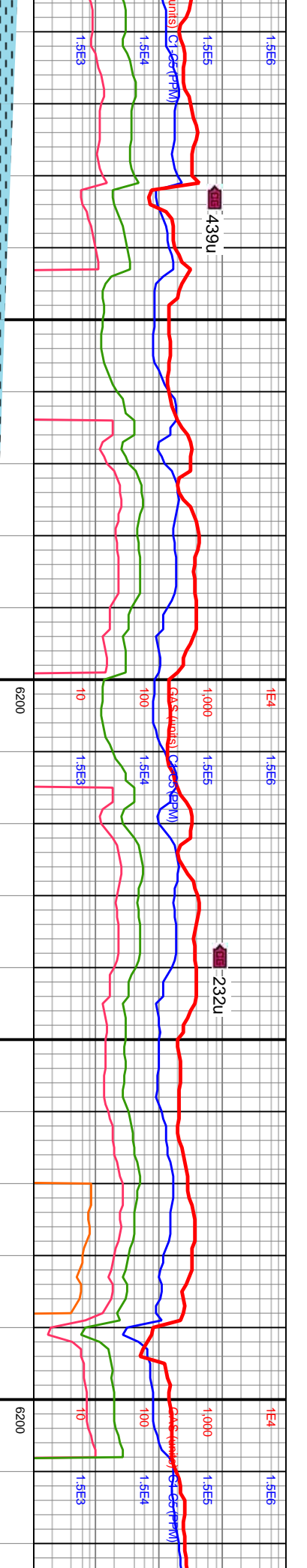
Continued from Vertical Log



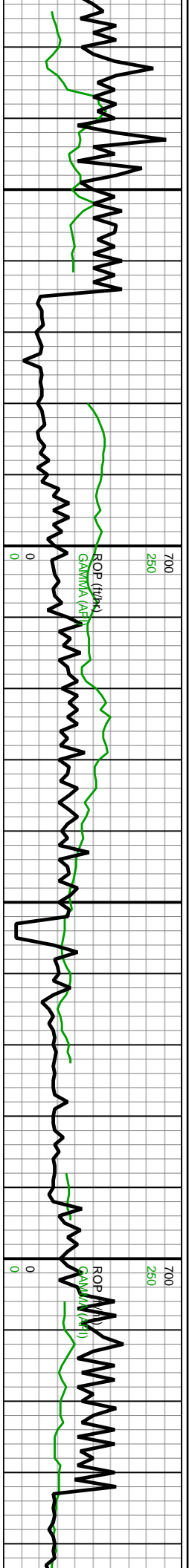
Images



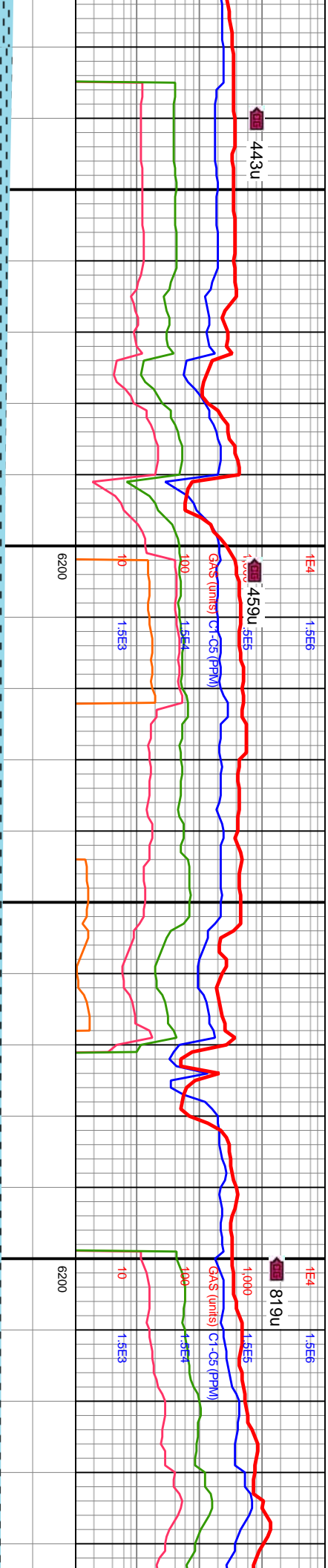
Nio B MD: 6.623' INC: 58.74° AZM: 276.75° TVD: 6.372.65' VS: 531.69'
 MW IN: 9.6+ VIS IN: 47 MM OUT: 9.6 VIS OUT: 4.4
Nio C MD: 6.712' INC: 65.02° AZM: 276.24° TVD: 6.414.58' VS: 610.14'
 WOB: 21.6kibs RPM: 120 SPM: 202 SPP: 2.809psi
 6.801MD / 6.446TVD MD: 6.801' INC: 74° AZM: 27° TVD: 6.4 VS: 694



6620-6650 CHK (60%): med dk brn dk gry mott sil frm sil hd occ britt mod vf lam sme calc tr	6650-6680 CHK (70%): mott lt dk brn lt dk gry sil frm sil hd mod vf lam sme calc tr	6680-6710 CHK (40%): mott lt dk brn sil frm sil hd vf lam ip calc tr foss frags	6710-6740 CHK (25%): lt dk brn dk gry mott lt dk brn dk gry frm sil hd vf lam ip calc	6740-6770 CHK (40%): lt dk brn mott sil frm sil hd vf lam ip calc MRLST (60%): pred dk gry md dk brn mott frm sil hd blkly sbkly plty mod calc	6770-6800 CHK (40%): dk brn mott frm sil hd vf lam ip calc MRLST (60%): pred dk gry md dk brn mott frm sil hd blkly sbkly mod calc tr drusy pyr	6800-6830 CHK (70%): mott lt dk lt gry frm sil hd v lam ip calc MRL (30%): pred dk g grymd dk brn mo frm sil hd blkly sb mod calc tr fd py
--	--	--	--	--	--	---

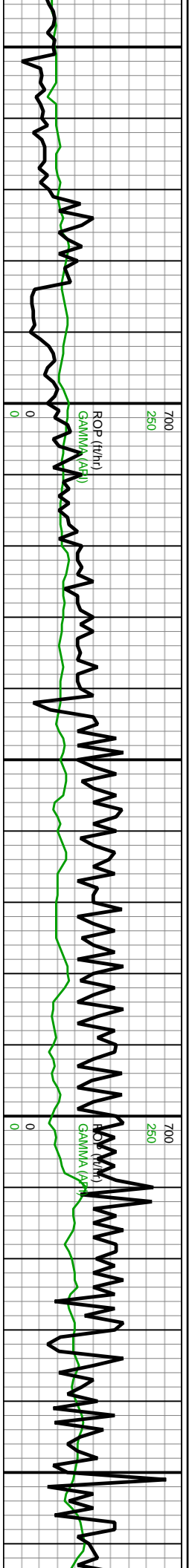


MD: 6.891' INC: 81.6° AZM: 274.23° TVD: 6.464.3' VS: 781.39
 MMW IN: 9.7 VIS IN: 46 MMW OUT: 9.7 VIS OUT: 42
 MD: 6.980' INC: 88.25° AZM: 273.2° TVD: 6.472.16' VS: 869.81'
Land Curve 6.980MD / 6.472TVD
 WOB: 18.5kibs RPM: 120 SPM: 202 SPP: 3.201psi



6830-6860 CHK (60%): It dk brn mott sli frm sli hd vf lam ip calc MRLST (40%): pred dk gry md dk brn mott frm sli hd blkly sbkly ply mod calc tr fd pyr	6860-6890 CHK (20%): dk brn mott sli frm sli hd vf lam ip calc MRLST (80%): pred dk gry dk brn mott frm sli hd blkly sbkly ply mod calc tr drusy pyr	6890-6920 CHK (40%): mott It dk brn dk gry v frm sli hd vf lam ip calc tr fd pyr MRLST (60%): It dk gry It dk brn mott v frm sli hd hbklky sbkly ply mod calc tr foss frags	6920-6950 CHK (70%): mott It dk brn It gry frm sli hd vf lam ip calc MRLST (30%): pred dk gry gry md dk brn mott frm sli hd blkly sbkly mod calc tr fd pyr	6950-6980 CHK (70%): It dk brn mott v frm sli hd vf lam calc slty tr fd pyr MRLST (30%): pred dk gry dk brn mott sli frm sli hd blkly sbkly ply mod calc tr fd pyr tr foss frags	6980-7000 CHK (75%): dk brn mott sli frm sli hd vf lam ip calc MRLST (25%): pred dk gry dk brn mott frm sli hd blkly sbkly mod calc
--	--	---	--	--	---





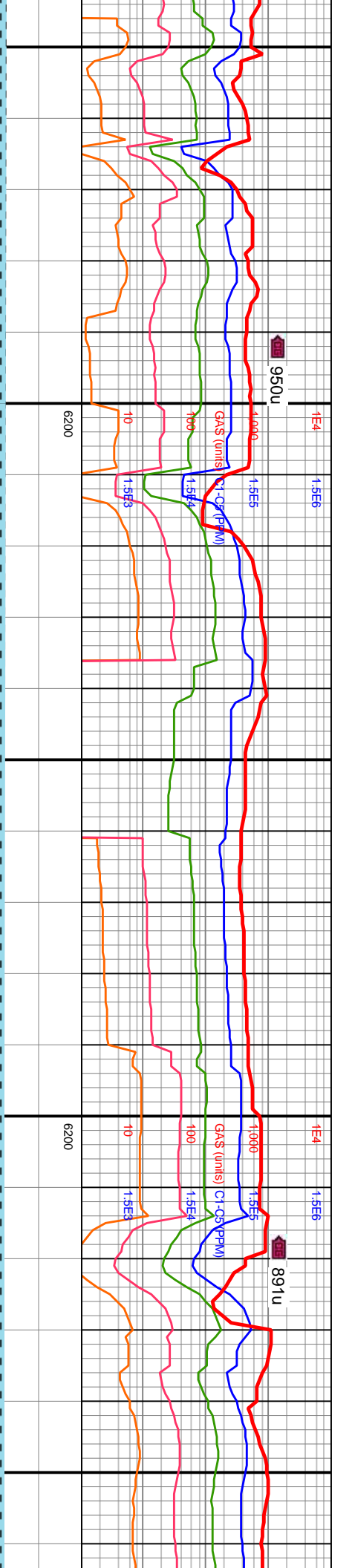
MMW IN: 9.6+
 VIS IN: 44
 MMW OUT: 9.6+
 VIS OUT: 43

MD: 7,070'
 INC: 88.98°
 AZM: 269.5°
 TVD: 6,474.34'
 VS: 959.27'

MD: 7,160'
 INC: 89.48°
 AZM: 269.69°
 TVD: 6,475.55'
 VS: 1,048.43'

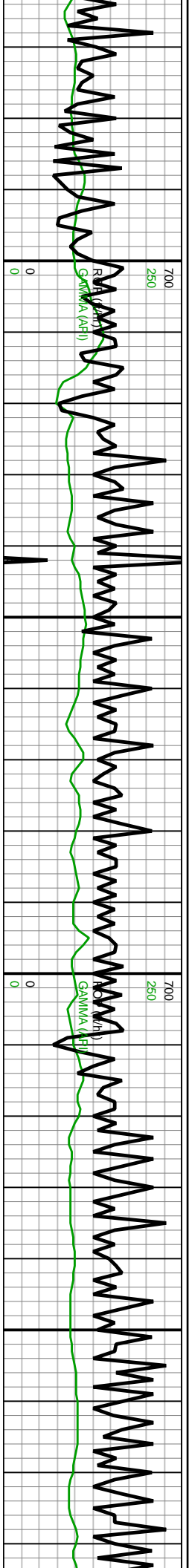
WOB: 29.6kibs
 RPM: 118
 SPM: 202
 SPP: 3,594psi

MD: 7,249'
 INC: 89.14°
 AZM: 269.61°
 TVD: 6,476.62'
 VS: 1,136.61'



7000-7100 CHK (80%): mott lt dk brn dk gry sli frm sli hd vf-lam mod calc tr fd pyr silty MRLST (20%): dk gry dk brn mott sli hd v hd blkly sbkly plty vf-lam silty calc	7000	TVD (ft)	7000	7100-7200 CHK (90%): preddy lt brn, dk gry mot, frm, rthy tex, blkly-sb blkly, calc, f mmica incl; MRLST (10%): preddy dk gry; occ dk brn, mot, frm-sl fri, blkly-sb blkly, sme plty, calc w com imbd chk	7000	TVD (ft)	7000	7200-7300 mot, frm, rth mmica incl; occ dk brn, plty, calc w	7000
--	------	----------	------	---	------	----------	------	--	------



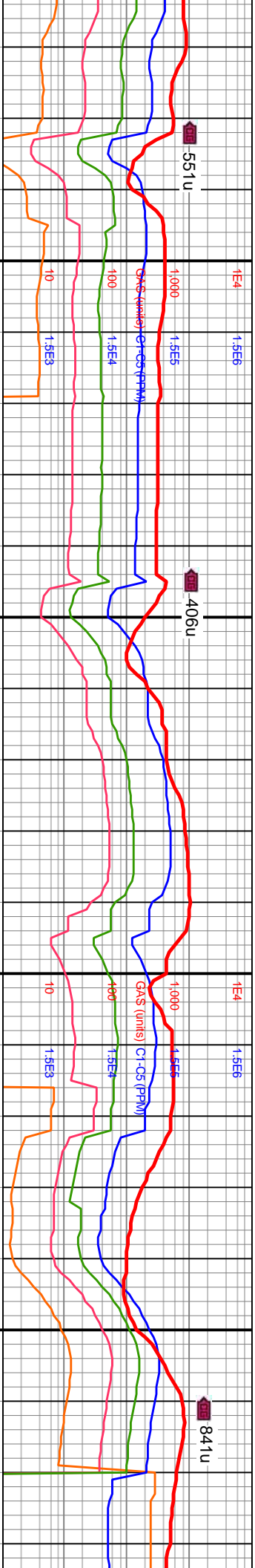


W IN: 9.7+
 S IN: 45
 W OUT: 9.7+
 S OUT: 46

 MD: 7.339'
 INC: 88.74°
 AZM: 269.73°
 TVD: 6.478.29'
 VS: 1.225.78'

 WOB: 24kbs
 RPM: 120
 SPM: 201
 SPP: 3.823psi

 MD: 7.428'
 INC: 89.51°
 AZM: 269.52°
 TVD: 6.479.65'
 VS: 1.313.96'

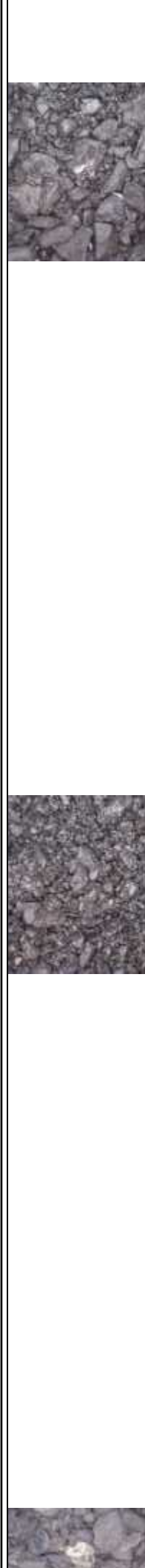


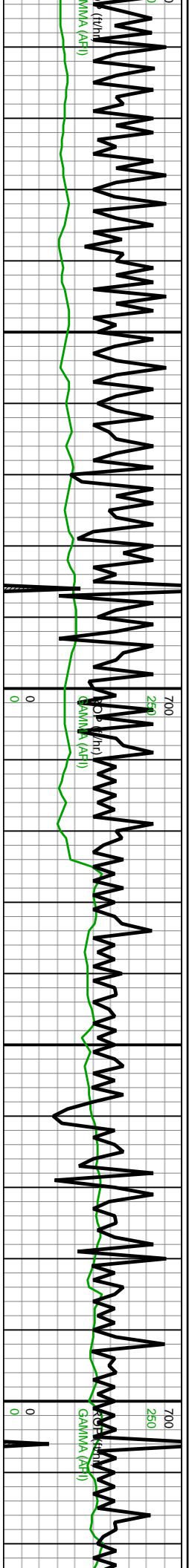
Depth (ft)	GMS (units)	CR-GS (PPM)	CR-GS (PPM)
7.270	1000	15E4	15E6
7.280	1000	15E4	15E6
7.290	1000	15E4	15E6
7.300	1000	15E4	15E6
7.310	1000	15E4	15E6
7.320	1000	15E4	15E6
7.330	1000	15E4	15E6
7.340	1000	15E4	15E6
7.350	1000	15E4	15E6
7.360	1000	15E4	15E6
7.370	1000	15E4	15E6
7.380	1000	15E4	15E6
7.390	1000	15E4	15E6
7.400	1000	15E4	15E6
7.410	1000	15E4	15E6
7.420	1000	15E4	15E6
7.430	1000	15E4	15E6
7.440	1000	15E4	15E6
7.450	1000	15E4	15E6
7.460	1000	15E4	15E6
7.470	1000	15E4	15E6
7.480	1000	15E4	15E6

CHK (80%): predy lt brn, dk gry
 y tex, blk-y-sb blk-y, calc, f
 MRLST (20%): predy dk gry,
 mot, frm-sl fri, blk-y-sb blk-y, sme
 com imbd chk

 7300-7400 CHK (55%): predy lt brn, dk
 gry mot, frm, rthy tex, blk-y-sb blk-y, calc, f
 mmica incl; MRLST (45%): predy dk gry,
 occ dk brn, mot, frm-sl fri, blk-y-sb blk-y,
 sme plty, calc w com imbd chk

 7400-7500 CHK (80%): predy
 mot, frm, rthy tex, blk-y-sb blk-y
 mmica incl; MRLST (20%): pr
 occ dk brn, mot, frm-sl fri, blk-y
 plty, calc w com imbd chk, tr f

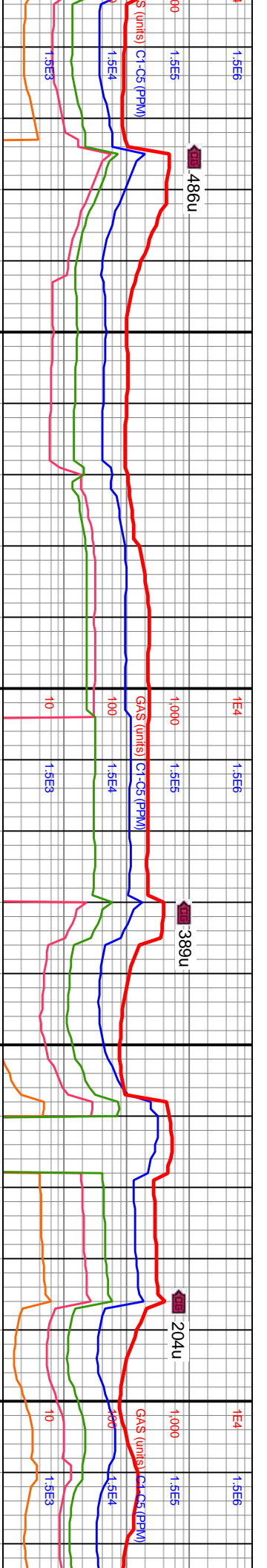




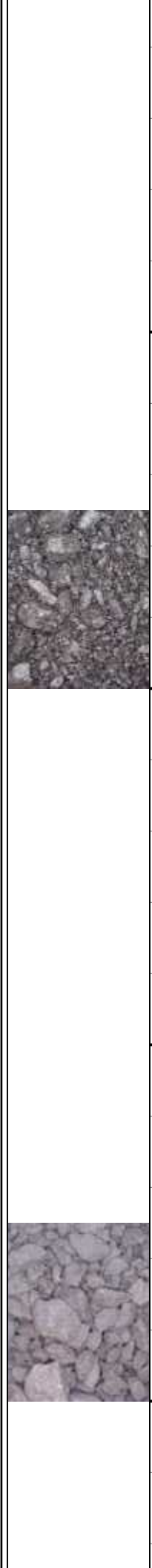
MD: 7.787'
 INC: 88.89°
 AZM: 269.58°
 TVD: 6.484.76'
 VS: 1.669.67'

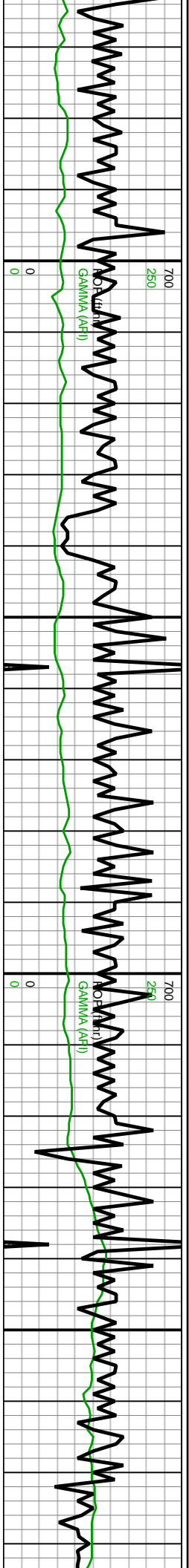
WOB: 21klbs
 RPM: 121
 SPM: 202
 SPP: 3.926psi

MD: 7.877'
 INC: 88.25°
 AZM: 268.72°
 TVD: 6.487'
 VS: 1.758.72'



7700-7800 CHK (70%): predy lt brn, dk gry mot, frm, rthy tex, blkv-sb blkv, calc, f mmica incl: MRLST (30%): predy dk gry, occ dk brn, mot, frm-sl fri, blkv-sb blkv, sme plty, calc w com imbd chk	7800-7900 CHK (55%): predy lt brn, dk gry mot, frm, rthy tex, blkv-sb blkv, calc, f mmica incl: MRLST (45%): predy dk gry, occ dk brn, mot, frm-sl fri, blkv-sb blkv, sme plty, com imbd chk, calc, tr free ofwht chk
---	---





MW IN: 9.8
 /IS IN: 45
 MW OUT: 9.7
 /IS OUT: 44

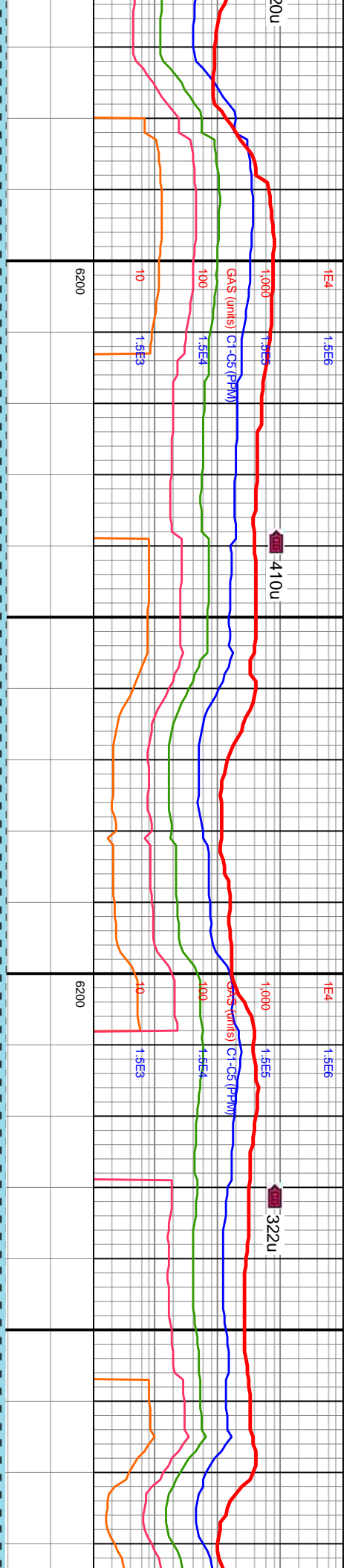
WOB: 27klbs
 RPM: 121
 SPM: 202
 SPP: 4.039psi

MD: 8.413
 INC: 89.82°
 AZM: 269.44°
 TVD: 6.495.35'
 VS: 2.289.23'

MD: 8.502
 INC: 88.89°
 AZM: 269.58°
 TVD: 6.496.36'
 VS: 2.377.39'

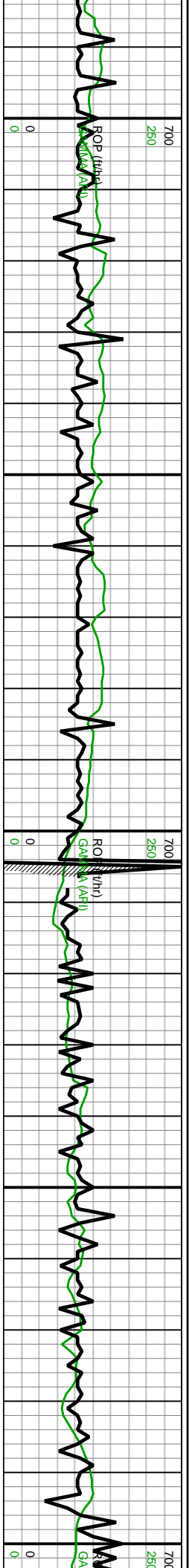
MW IN: 9.8
 VIS IN: 45
 MW OUT: 9.7+
 VIS OUT: 45

MD:
 INC:
 AZM:
 TVD:
 VS:



CHK (55%): predy lt brn, dk gry y tex, blk-y-sb blk-y, calc, f mmica (45%): predy dk gry, occ dk brn, ri, blk-y-sb blk-y, sme ply, com calc	7000	8400-8500 CHK (60%): predy lt brn, dk gry mot, frm, rthy tex, blk-y-sb blk-y, calc, f mmica incl; MRLST (40%): predy dk gry, occ dk brn, mot, frm-sl fri, blk-y-sb blk-y, sme ply, com imbd chk, calc	7000	8500-8600 CHK (60%): predy mot, frm, rthy tex, blk-y-sb blk-y, incl; MRLST (40%): predy dk g brn, mot, frm-sl fri, blk-y-sb blk-y com imbd chk, calc
---	------	---	------	--



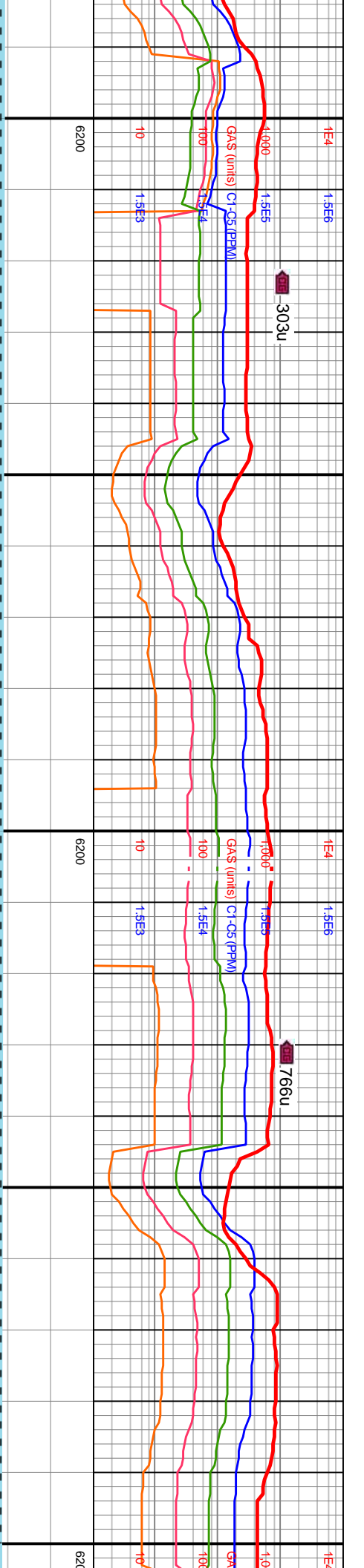


8,592' WOB: 26klbs
 88.62° RPM: 79
 268.96° SPM: 201
 6,498.31' SPD: 3.964psi
 2,466.46'

MD: 8,681'
 INC: 88.86°
 AZM: 269.28°
 TVD: 6,500.27'
 VS: 2,554.52'

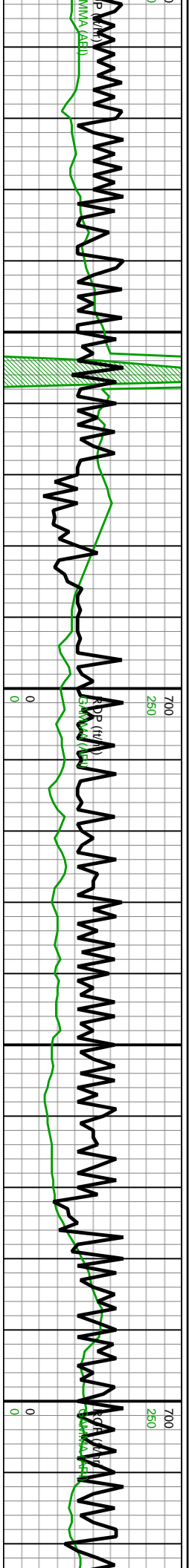
MD: 8,770'
 INC: 88.77°
 AZM: 269.23°
 TVD: 6,502.11'
 VS: 2,642.61'

WOB: 62klbs
 RPM: 120
 SPM: 200
 SPD: 4.102psi



It brn, dk gry calc, f mmica ry, occ dk ; sme ply,	7000	8600-8700 CHK (80%): predy It brn, dk gry mot, frm, rthy tex, blkys-sb blkly, calc, f mmica incl; MRLST (20%): predy dk gry, occ dk brn, mot, frm-sl fri, blkys-sb blkly, sme ply, com imbd chk, calc, tr free offwht chk	7000	8700-8800 CHK (70%): predy It brn, dk gry mot, frm, rthy tex, blkys-sb blkly, calc, f mmica incl; MRLST (30%): predy dk gry, occ dk brn, mot, frm-sl fri, blkys-sb blkly, sme ply, com imbd chk, calc, tr free offwht chk	7000
---	------	---	------	--	------



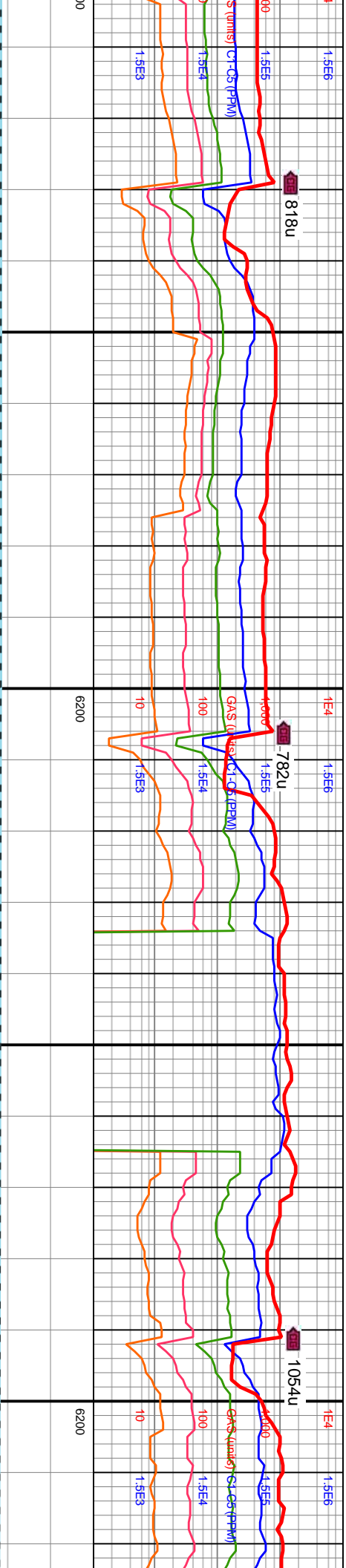


MW IN: 9.8
 VIS IN: 46
 MW OUT: 9.8
 VIS OUT: 45

MD: 8,860'
 INC: 88.86°
 AZM: 269.2°
 TVD: 6,503.97'
 VS: 2,731.68'

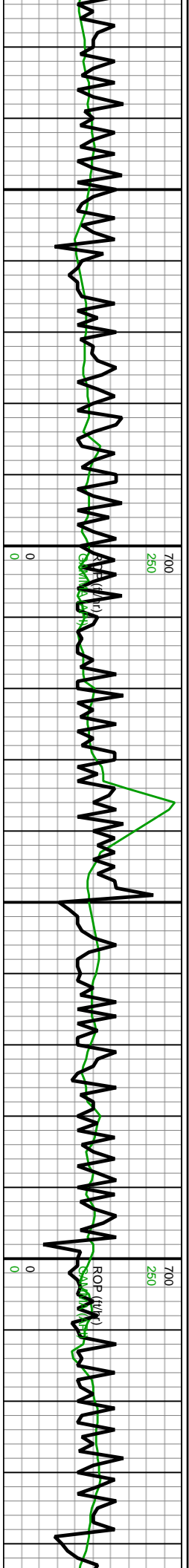
MD: 8,949'
 INC: 88.15°
 AZM: 268.42°
 TVD: 6,506.29'
 VS: 2,819.65'

WOB: 31klbs
 RPM: 100
 SPM: 201
 SPP: 4.06psi



8800-8900	CHK (70%): predy lt brn, dk gry mot, frm, rthy tex, blk-y-sb blk-y, calc, f mmica incl; MRLST (30%): predy dk gry, occ dk brn, mot, frm-sl fri, blk-y-sb blk-y, sme plty, com imbd chk, calc, tr foram	7000
8900-9000	CHK (70%): predy lt brn, dk gry mot, frm, rthy tex, blk-y-sb blk-y, calc, f mmica incl; MRLST (30%): predy dk gry, occ dk brn, mot, frm-sl fri, blk-y-sb blk-y, sme plty, com imbd chk, calc, tr foram	7000





MD: 9.038'
 INC: 88.86°
 AZM: 269.37°
 TVD: 6,508.62'
 VS: 2.907.64'

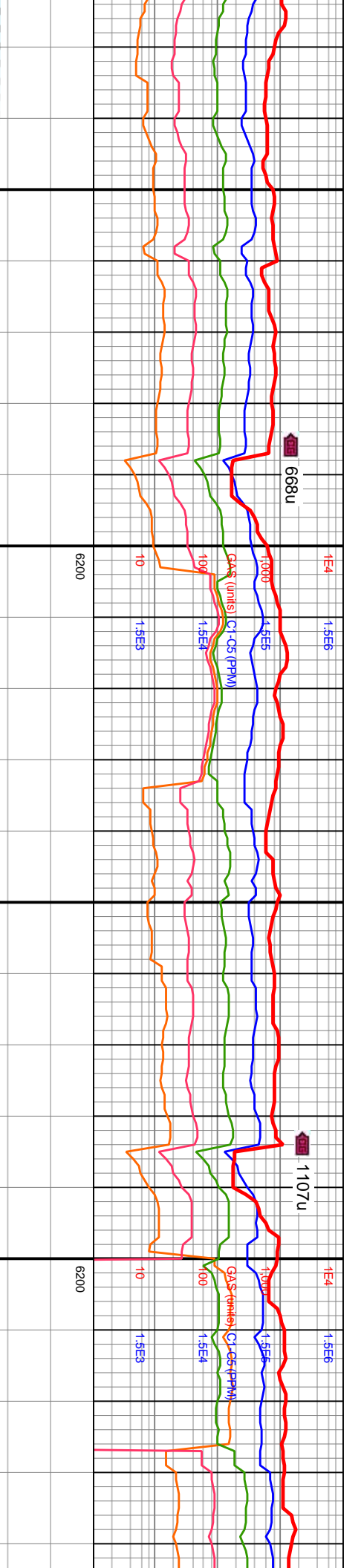
MW IN: 9.8
 VIS IN: 44
 MW OUT: 9.8
 VIS OUT: 44

Off gas buster
 9.100 MD / 6.510 TVD

MD: 9.127'
 INC: 88.95°
 AZM: 269.15°
 TVD: 6,510.32'
 VS: 2.995.74'

WOB: 25klbs
 RPM: 120
 SPM: 202
 SPP: 3.938psi

MD: 9.217'
 INC: 89.32°
 AZM: 269.3°
 TVD: 6,511.67'
 VS: 3.084.82'



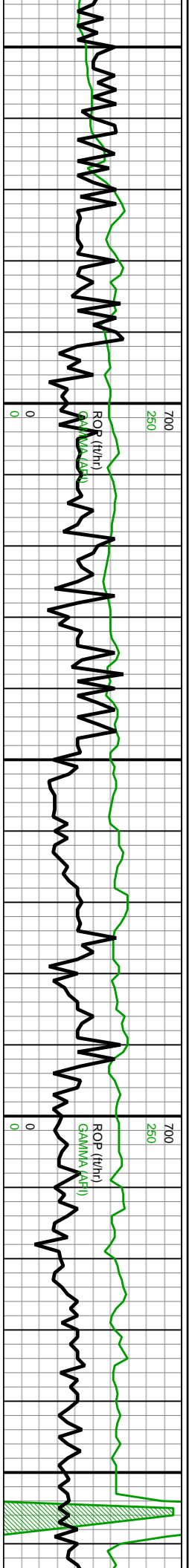
9000-9100 CHK (55%): predy lt brn, dk gry
 mot, frm, rthy tex, blkly-sb blkly, calc, f mmica
 incl: MRLST (45%): predy dk gry, occ dk brn,
 mot, frm-sl fri, blkly-sb blkly, sme ply, com
 imbd chk, calc, tr foram

9100-9200 CHK (50%): predy lt brn, dk gry
 mot, frm, rthy tex, blkly-sb blkly, calc, f mmica
 incl: MRLST (50%): predy dk gry, occ dk brn,
 mot, frm-sl fri, blkly-sb blkly, sme ply, com
 imbd chk, calc



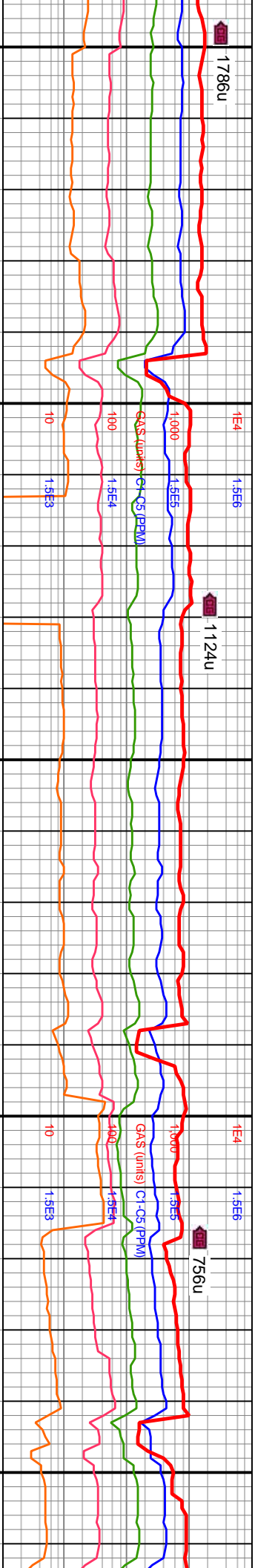
7000

7000



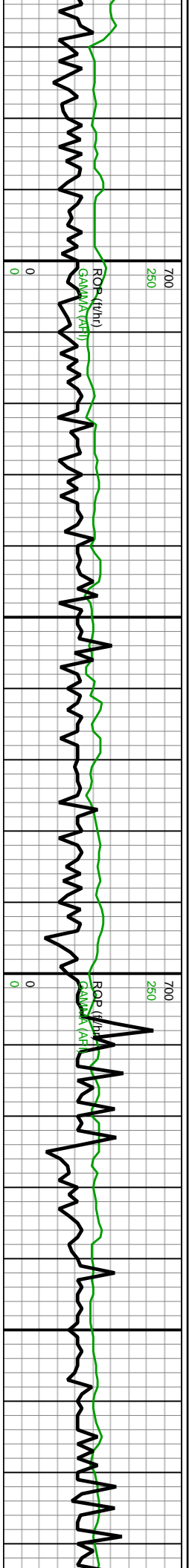
MD: 9,307' MW IN: 9.8
 INC: 89.29° VIS IN: 44
 AZM: 269.4° MW OUT: 9.8+
 TVD: 6,512.77' VIS OUT: 44
 VS: 3,173.93

MD: 9,396' WOB: 28kbs
 INC: 88.92° RPM: 80
 AZM: 269.27° SPM: 201
 TVD: 6,514.16' SPP: 3,950psi
 VS: 3,262.04'



9200-9300 CHK (70%): predy lt brn, dk gry mot, frm, rthy tex, blkly-sb blkly, calc, f mmica incl: MRLST (30%): predy dk gry, occ dk brn, mot, frm-sl fri, blkly-sb blkly, sme ply, calc w com imbd chk	7000	9300-9400 CHK (50%): predy lt brn, dk gry mot, frm, rthy tex, blkly-sb blkly, calc, f mmica incl: MRLST (50%): predy dk gry, occ dk brn, mot, frm-sl fri, blkly-sb blkly, sme ply, calc w com imbd chk	7000
--	------	--	------





MD: 9.486'
 INC: 89.26°
 AZM: 269.28°
 TVD: 6.515.59'
 VS: 3.351.13'

MD: 9.575'
 INC: 88.95°
 AZM: 269.17°
 TVD: 6.516.98'
 VS: 3.439.22'

WOB: 18klbs
 RPM: 120
 SPM: 201
 SPP: 3.935psi

On gas buster
 7.650MD / 6.429'TVD

MD: 9.664'
 INC: 88.8°
 AZM: 269.02°
 TVD: 6.518.72'
 VS: 3.527.27'

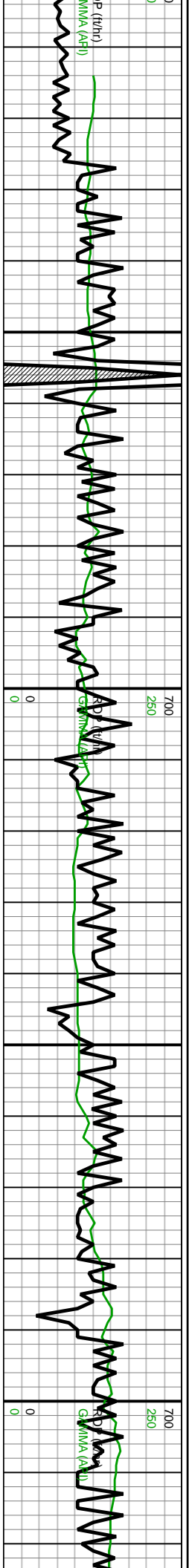
Interval	CHK (55%)	Pre	Post
9.470 - 9.500	CHK (55%): pre	9.486	9.500
9.500 - 9.550	CHK (55%): pre	9.575	9.550
9.550 - 9.600	CHK (55%): pre	9.600	9.600
9.600 - 9.650	CHK (55%): pre	9.664	9.650
9.650 - 9.700	CHK (55%): pre	9.664	9.700



CHK (55%): pre

9500-9600 MRLST (55%): pre

9600-9700 MRLST (60%): pre



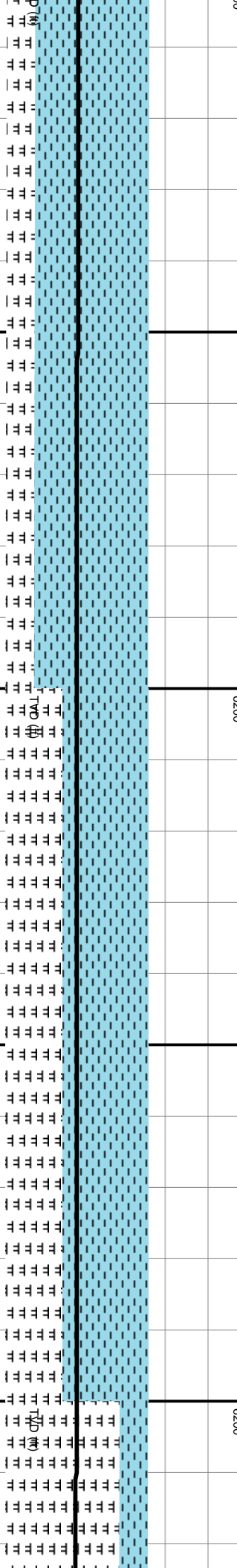
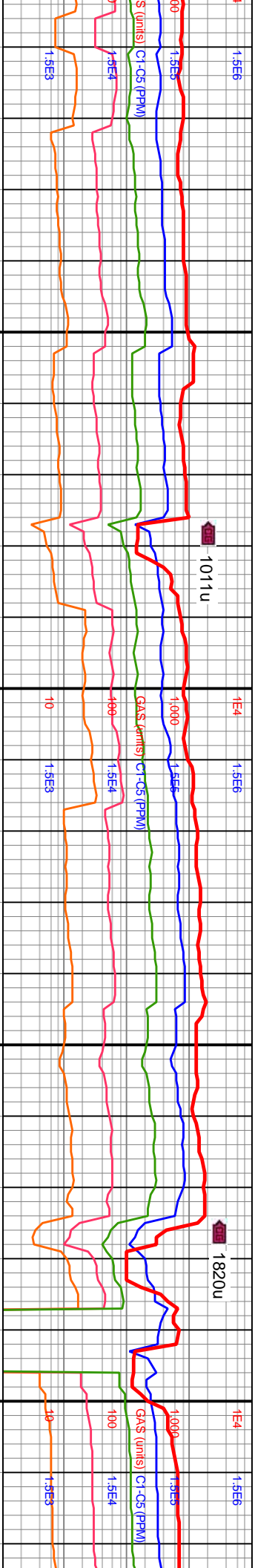
MD: 9.933'
 INC: 89.01°
 AZM: 270.14°
 TVD: 6,523.61'
 VS: 3,793.45'

MOB: 24kbs
 RPM: 138
 SPM: 200
 SPP: 4.170psi

MD: 10.022'
 INC: 88.86°
 AZM: 270.03°
 TVD: 6,525.27'
 VS: 3,881.71'

PW

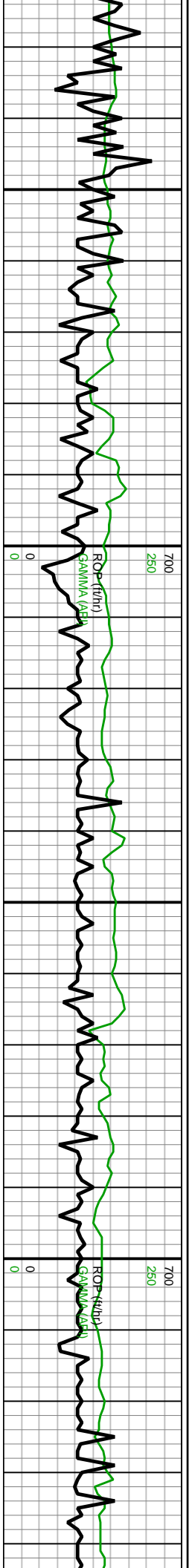
MD: 10.111'
 INC: 89.32°
 AZM: 270.21°
 TVD: 6,526.68'
 VS: 3,969.99'



9900-10000 CHK (80%): predy lt brn, dk gry mot, frm, rthy tex, blkly-sb blkly, f mmica incl, calc; MRLST (20%): predy dk gry, occ dk brn, mot, frm-si fri, blkly-sb blkly, sme pily, calc w com imbd chk

10000-10100 CHK (60%): pred lt brn dk gry mott frm sli hd blkly sbkly vf lam tr fd grnlf pyr calc MRLST (40%): pred dk gry occ dk brn mott v frm-si fri blkly sbkly pily calc w embdd chk



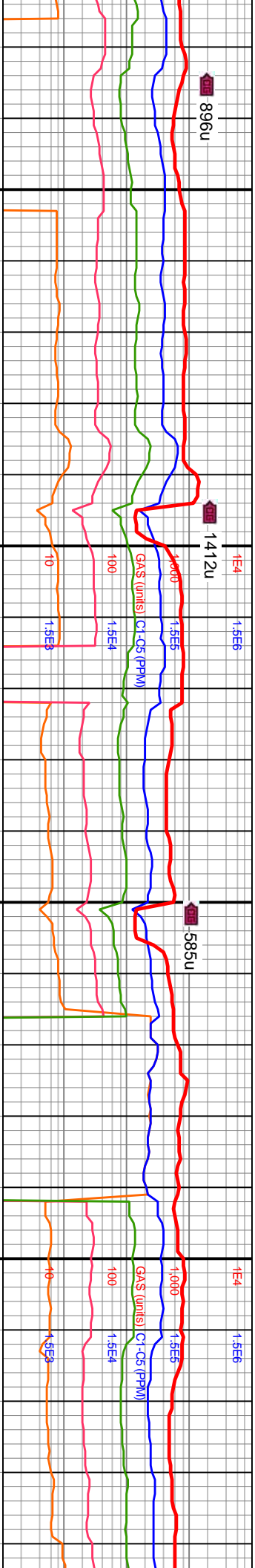


Off gas buster
 0131 MD / 6.527 TVD

MD: 10.200'
 INC: 89.23°
 AZM: 270.31°
 TVD: 6.527.81'
 VS: 4.058.29'

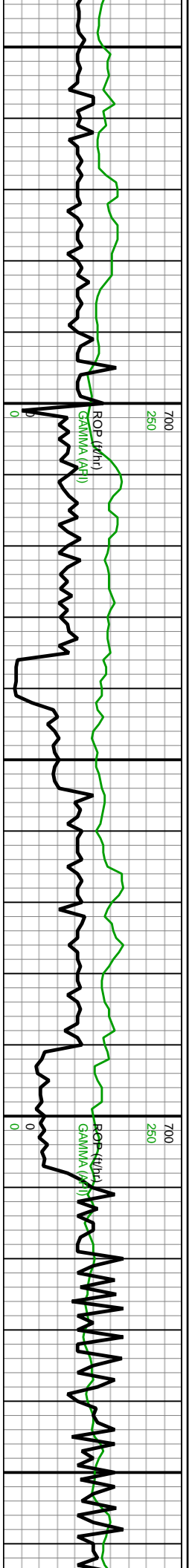
MMV IN: 9.8
 VIS IN: 4.5
 MMV OUT: 9.8
 VIS OUT: 4.5

MD: 10.289'
 INC: 89.05°
 AZM: 270.15°
 TVD: 6.529.14'
 VS: 4.146.59'



896u	1412u	585u
1E4	1E4	1E4
1.5E6	1.5E6	1.5E6
1000	1000	1000
GAS (umies)	GAS (umies)	GAS (umies)
C1-C5 (PPM)	C1-C5 (PPM)	C1-C5 (PPM)
100	100	100
1.5E4	1.5E4	1.5E4
10	10	10
1.5E3	1.5E3	1.5E3
6200	6200	6200
7000	7000	7000
10100-10200 CHK (20%): pred lt brn dk brn dk gry mott v frm sli hd blkly sbkly vf lam tr fd grnlr pyr calc MRLST (80%): pred dk gry lt gry lt dk brn mott frm-si fri blkly sbkly plty calc w embdd chk	10200-10300 CHK (25%): pred lt dk gry lt brn mott sli frm sli hd blkly sbkly plty vf lam mod drusy grnlr pyr abt free pyr calc MRLST (75%): pred dk gry occ dk brn blk mott v frm-sli hd blkly sbkly plty vf lam calc w embdd chk mod ffc	





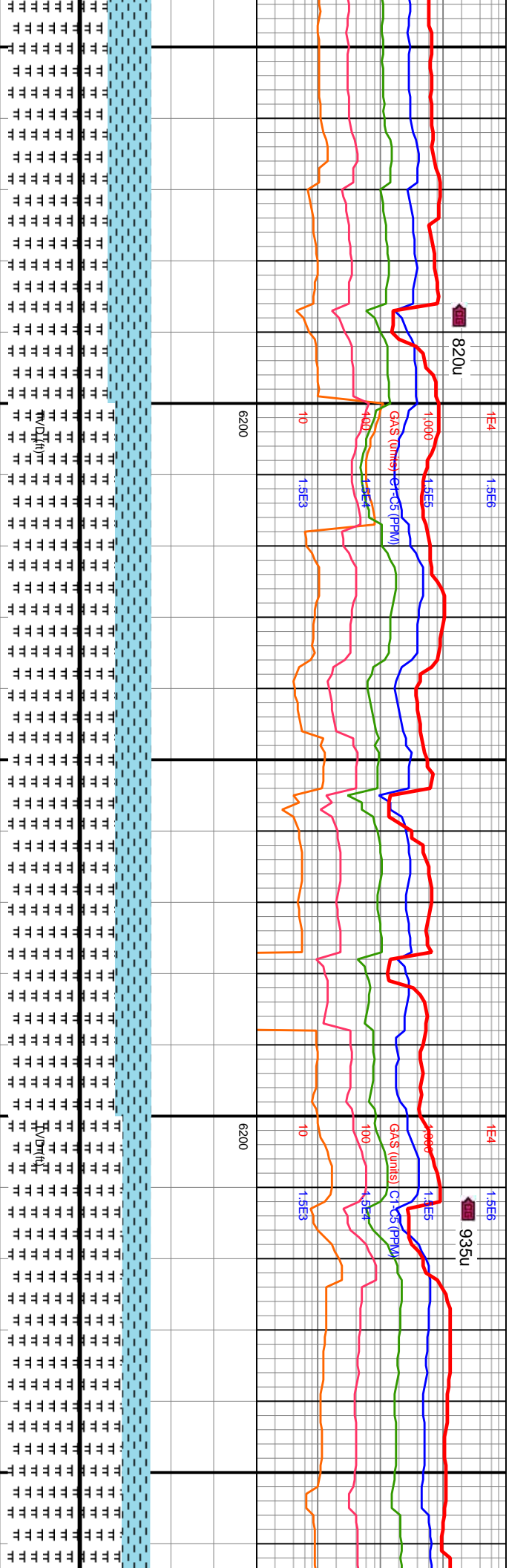
MD: 10,379'
 INC: 88.89°
 AZM: 270.16°
 TVD: 6,530.76'
 VS: 4,235.86'

WOB: 16.8klbs
 RPM: 102
 SPM: 201
 SPP: 3,909psi

MW IN: 9.8
 VIS IN: 4.3
 MW OUT: 9.8+
 VIS OUT: 4.2

MD: 10,468'
 INC: 90.12°
 AZM: 270.49°
 TVD: 6,531.53'
 VS: 4,324.18'

MD: 10,557'
 INC: 89.35°
 AZM: 269.87°
 TVD: 6,531.94'
 VS: 4,412.48'

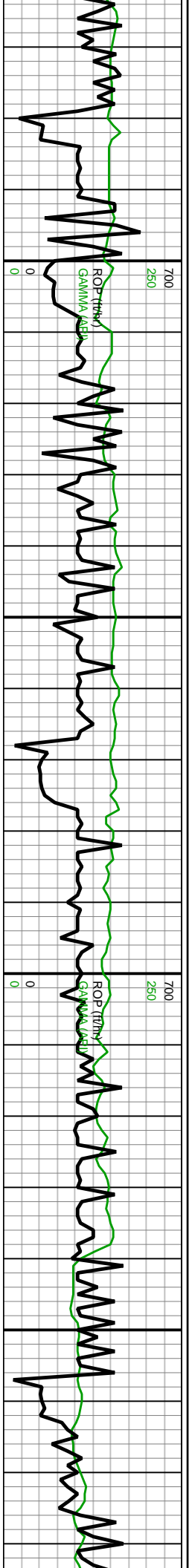


10300-10400 CHK (30%): pred it brn dk gry
 mott frm sli hd blkly sbkly vf lam tr fd gmlr pyr
 calc mod free pyr MRLST (70%): pred dk gry
 ooc dk brn mott v frm-si frt blkly sbkly plty
 calc w embdd chk

10400-10500 CHK (25%): pred it brn dk brn
 mott frm sli hd v hd blkly sbkly flky mod fd
 gmlr pyr calc MRLST (75%): pred dk gry lt
 gry dk brn mott sli hd hd blkly sbkly plty flky
 calc w embdd chk mod free pyr tr drusy pyr

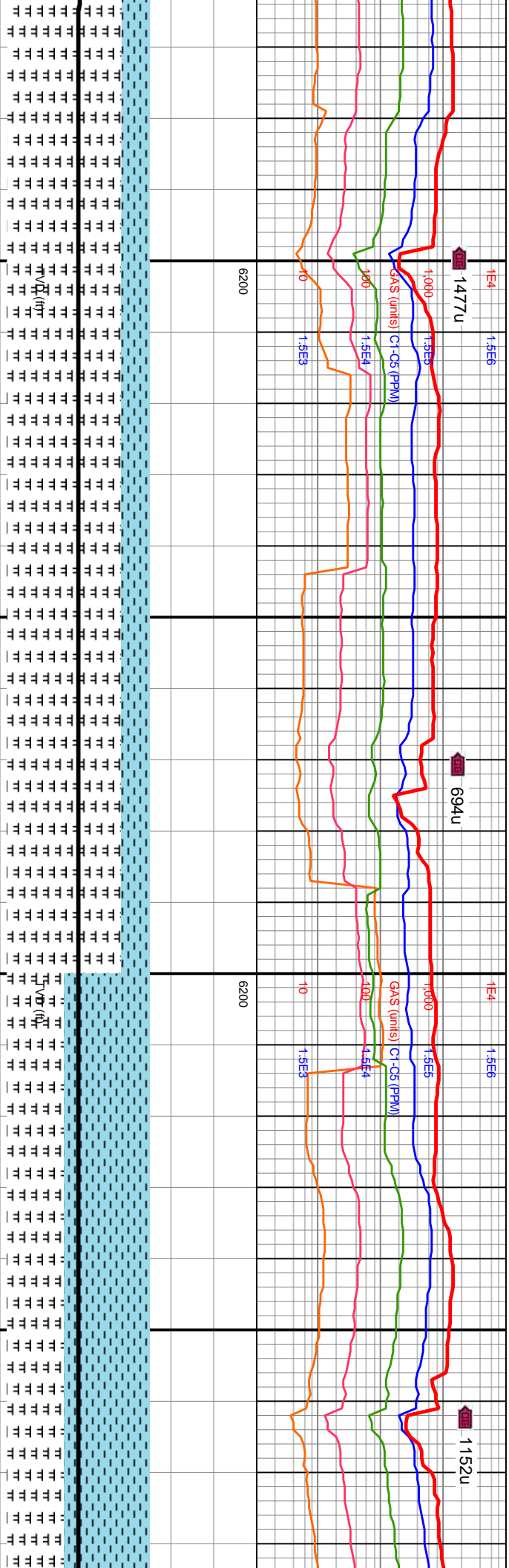
10500-106
 mott sli frm
 drusy gmlr
 dk brn blk
 sbkly plty v





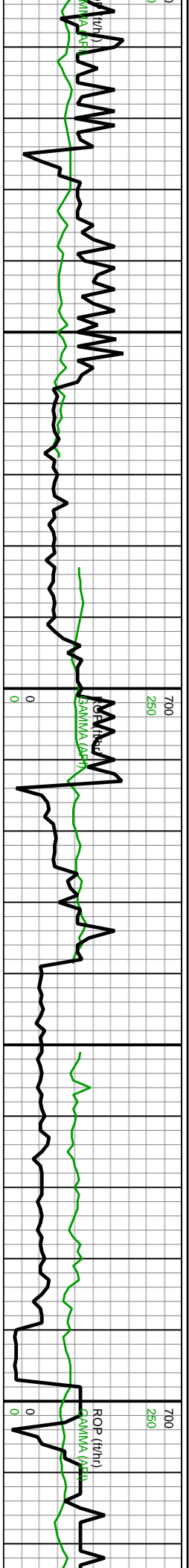
WOB: 23.8klbs
 RPM: 99
 SPM: 186
 SPP: 3.751psi
 MD: 10.646'
 INC: 89.72°
 AZM: 270.12°
 TVD: 6.532.66'
 VS: 4.500.74'
 MW IN: 9.8
 VIS IN: 4.5
 MW OUT: 9.8+
 VIS OUT: 4.2

MD: 10.736'
 INC: 89.97°
 AZM: 270.29°
 TVD: 6.532.91'
 VS: 4.590.03'

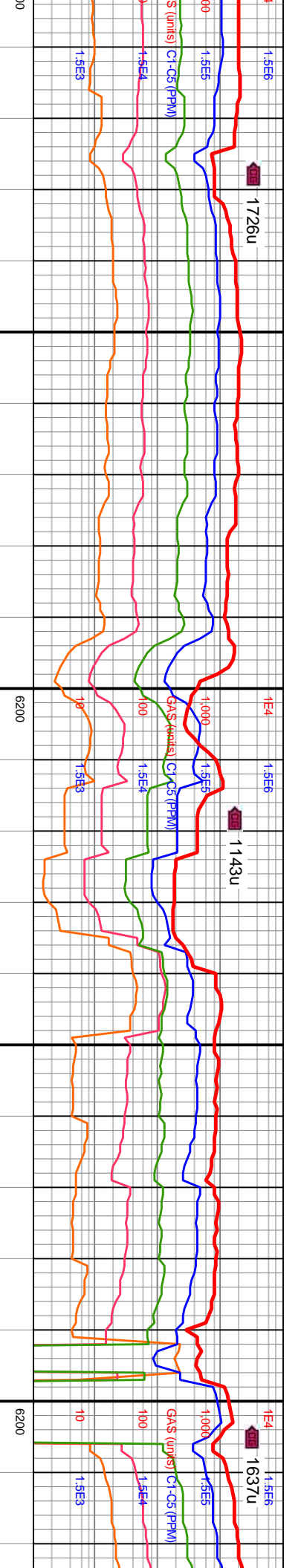


00 CHK (20%): pred lt brn sli hd blkly sbkly ply vf lam tr pyr MRLST (80%): pred dk gry mott v frm-sli hd sme brit blkly f lam calc w embdd chk	7000	10600-10700 CHK (20%): lt brn dk gry mott frm sli hd sbkly flky vf lam mod fd grnlr pyr mod drusy pyr calc slty MRLST (80%): pred dk gry lt gry dk brn mott v frm sli hd sme hd blkly sbkly ply calc w embdd chk mod free pyr	7000	10700-10800 CHK (60%): pred brn dk gry mott v frm sli hd bli lam tr fd grnlr pyr abt free pyr pyr MRLST (40%): pred dk gry mott sli hd v hd sme brit blkly calc w embdd chk	7000
---	------	---	------	---	------

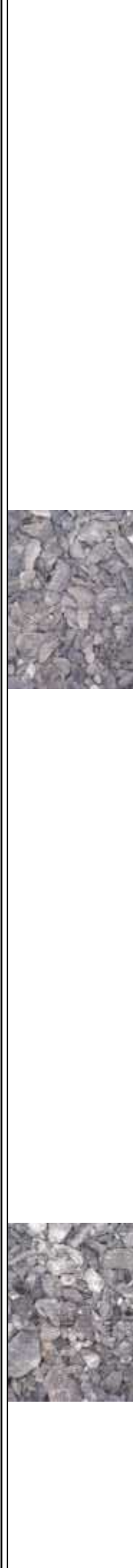


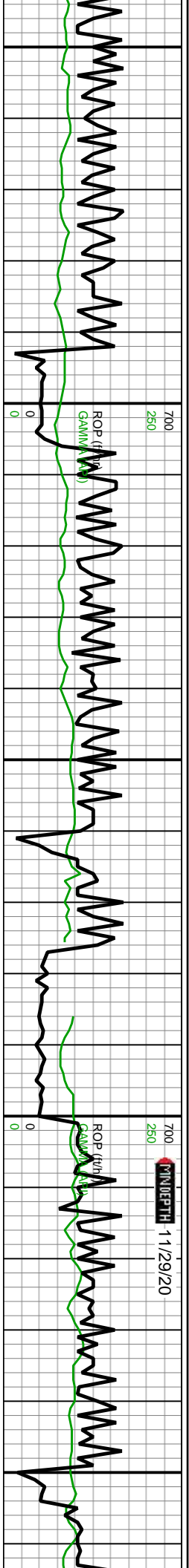


MD: 11,004' INC: 90.22° MW/IN: 9.8+ VIS IN: 45
 AZM: 270.38° MMV OUT: 9.8 VIS OUT: 42
 TVD: 6,533.68' VS: 4,855.99'
 MD: 11,093' INC: 90.31° MW/IN: 9.8+ VIS IN: 45
 AZM: 270.5° MMV OUT: 9.8 VIS OUT: 42
 TVD: 6,533.27' VS: 4,944.33'
 MD: 11,183' INC: 89.51° WOB: 24.4klbs RPM: 109
 AZM: 270.65° SPM: 184 SPP: 3.907/psi TVD: 6,533.41'
 VS: 5,033.7'



11,010	11,020	11,030	11,040	11,050	11,060	11,070	11,080	11,090	11,100	11,110	11,120	11,130	11,140	11,150	11,160	11,170	11,180	11,190	11,200	11,210	11,220
11000-11100 CHK (70%): pred lt brn dk gry mott frm sli hd blkly sbkly vf lam tr fd grnlr pyr calc mod free pyr MRLST (30%): pred dk gry occ dk brn mott v frm-sl fri blkly sbkly plty calc w embdd chk																					
11100-11200 CHK (80%): pred lt brn lt dk gry mott sli frm sli hd blkly sbkly plty vf lam tr fd grnlr pyr calc fic tab cal foss frags MRLST (20%): pred dk gry lt gry dk brn mott v frm sli hd v hd blkly sbkly plty calc w embdd chk tab cal mod drusy pyr																					





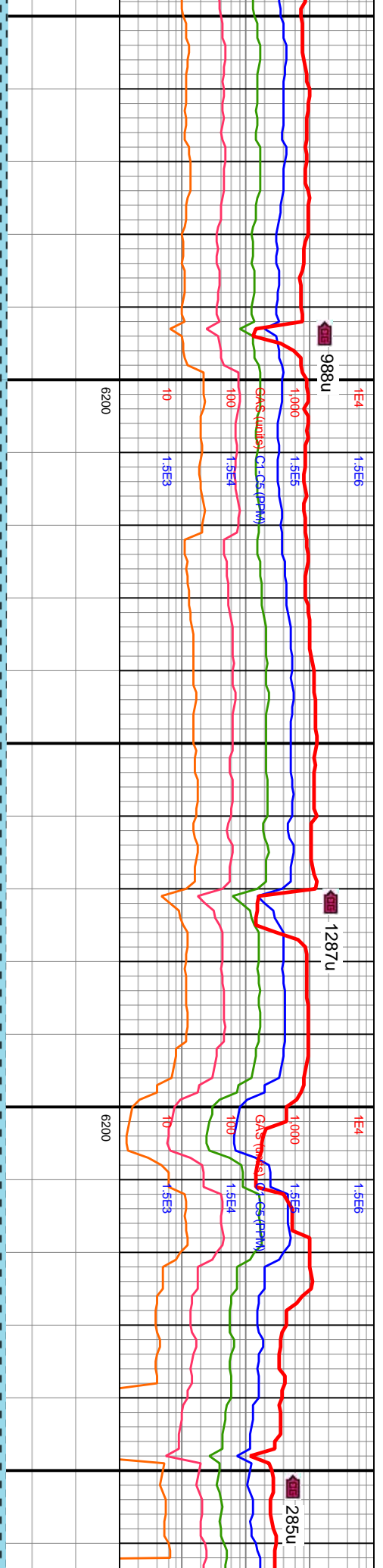
MD: 11,451'
INC: 88.99°
AZM: 270.15°
TVD: 6,538.12'
VS: 5,299.52'

MD: 11,541'
INC: 89.14°
AZM: 270.34°
TVD: 6,539.58'
VS: 5,388.81'

WOB: 17.5klbs
RPM: 111
SPM: 186
SPP: 3.412psi

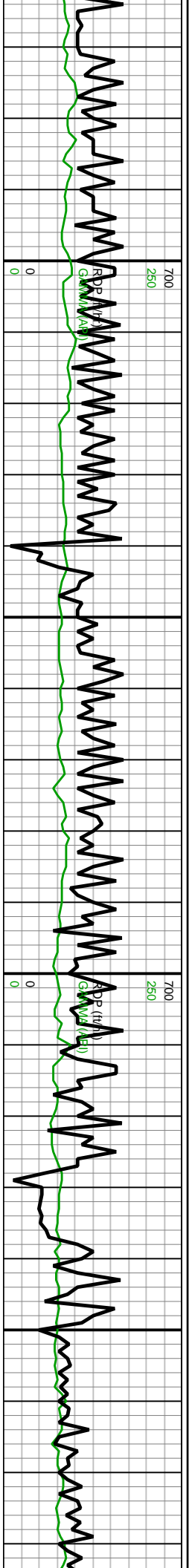
MD: 11,630'
INC: 89.35°
AZM: 270.2°
TVD: 6,540.76'
VS: 5,477.12'

MW IN: 9.8+
VIS IN: 43
MW OUT: 9.8+
VIS OUT: 42



11400-11500 CHK (80%): pred lt brn dk brn mott frm sli hd blk sbkly plty v/lam tr ffc MRLST (20%): pred dk gry lt gry dk brn mott v frm sli hd sme brit blkly sbkly plty sily calc w/embdd chk	7000
11500-11600 CHK (75%): lt brn dk brn mott sli frm sli hd blkly plty flky v/lam v/d grnl micmic MRLST (25%): dk gry lt gry blk dk brn v frm sli hd sme v hd blkly sbkly plty calc w/embdd chk	7000
11600-11700 dk gry mott ffc MRLST sli hd sme t w/embdd ch	



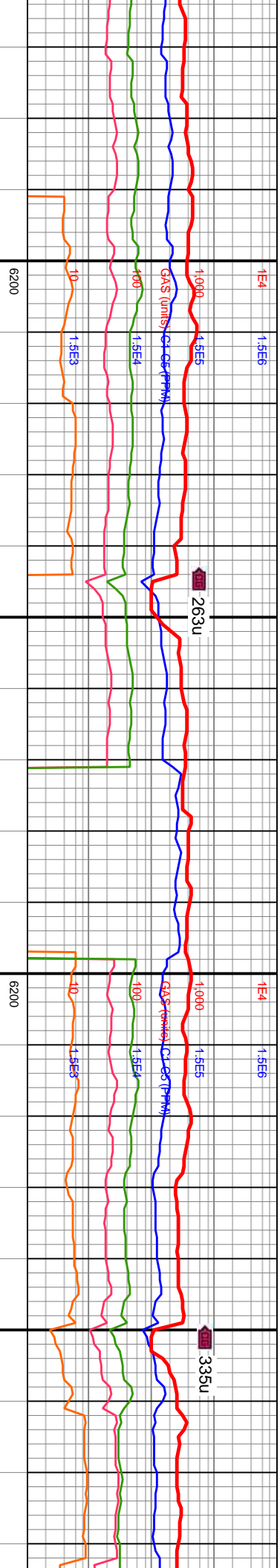


MD: 11,720
 INC: 89.54°
 AZM: 270.32°
 TVD: 6,541.63'
 VS: 5,566.42'

WOB: 23.9klbs
 RPM: 107
 SPM: 186
 SPP: 3,994psi
Flush gas buster
 11,805MD / 6,542'TVD

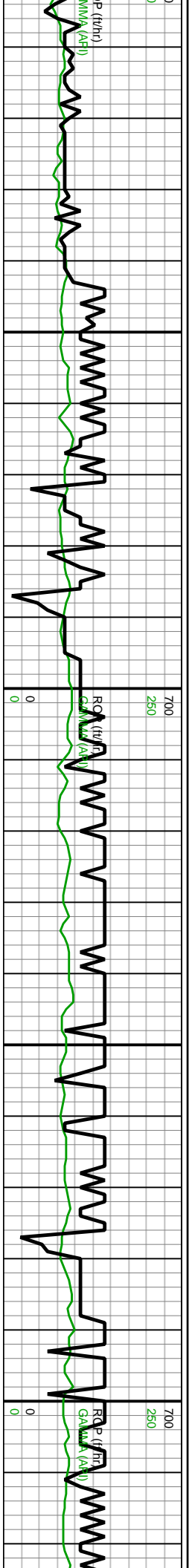
MD: 11,809'
 INC: 89.42°
 AZM: 270.49°
 TVD: 6,542.44'
 VS: 5,654.76'

MW IN: 10
 VIS IN: 43
 MW OUT: 9.9+
 VIS OUT: 44



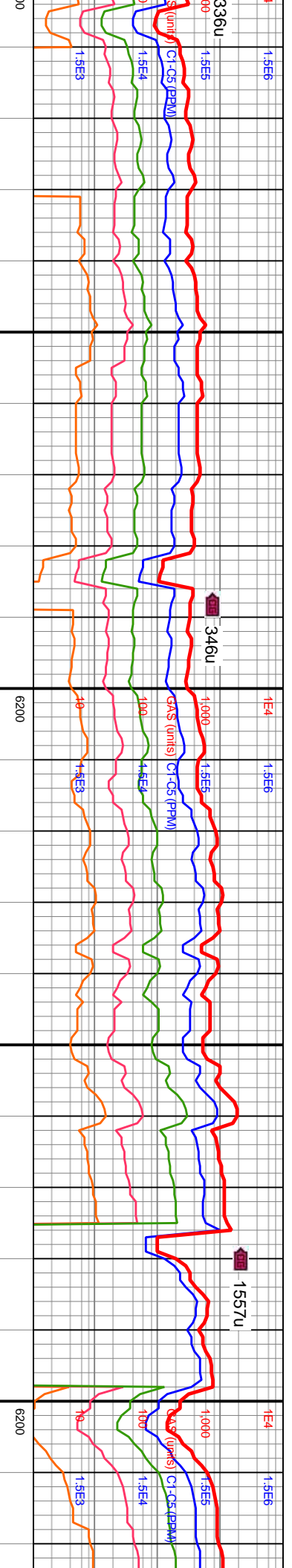
00 CHK (80%); pred lt brn dk brn frm sli hd blkly sbkly ply vf lam tr 20%; dk gry blk dk brn mott frm w/embdd blkly sbkly ply sily calc _____ 7000	11700-11800 CHK (90%); mott lt brn dk brn dk gry v frm sli hd blkly sbkly vf lam abt ffc tab cal MRLST (10%); dk gry blk dk brn mott frm sli hd sme v hd blkly sbkly ply sily calc w/embdd chk mod foss frags _____ 7000	11800-11900 CHK (80%); mo brn buff dk tn dk gry frm sli hd lam mod ffc tab cal tr foss frag (20%); dk gry blk dk brn sli hd blkly sbkly sily calc w/embdd c _____ 7000
---	--	--





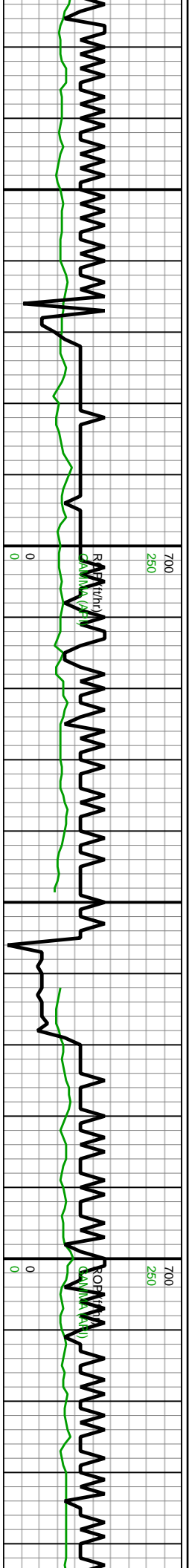
MD: 12,167' WOB: 27.6kibs
 INC: 89.42° RPM: 108
 AZM: 270.28° SPM: 185
 TVD: 6,546.18' SPP: 4.012psi
 VS: 6,009.98

 MW IN: 10 MD: 12,256'
 VIS IN: 45 INC: 88.95°
 MW OUT: 10.2 AZM: 269.99°
 VIS OUT: 45 TVD: 6,547.45'
 VS: 6,098.26



Time	Depth (ft)	GRS (units)	Notes
12:110	7000	336u	
12:150	7000	346u	
12:250	7000	1557u	
12:300	7000	100u	
12:320	7000	100u	





MD: 12,346'
 INC: 89.23°
 AZM: 270.16°
 TVD: 6,548.88'
 VS: 6,187.52'

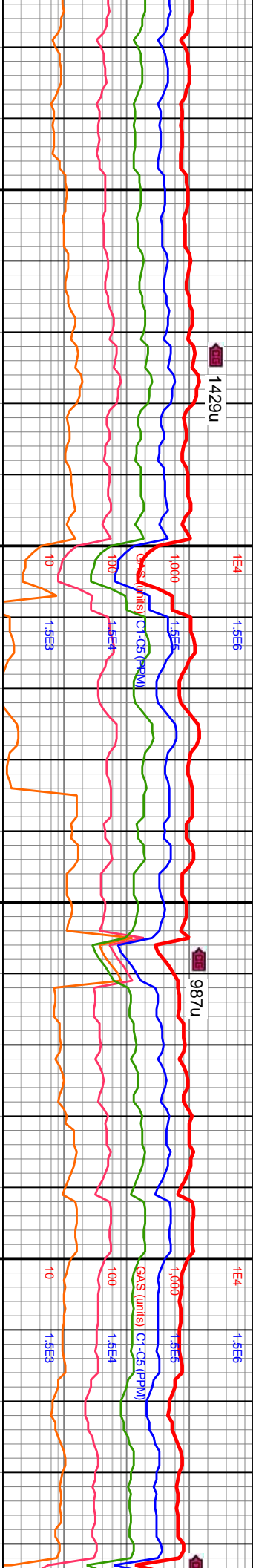
WOB: 1.14kibs
 RPM: 108
 SPM: 186
 SPP: 4.175psi

MD: 12,435'
 INC: 89.42°
 AZM: 270.11°
 TVD: 6,549.93'
 VS: 6,275.8'

MW IN: 10
 VIS IN: 45
 MW OUT: 10.2
 VIS OUT: 45

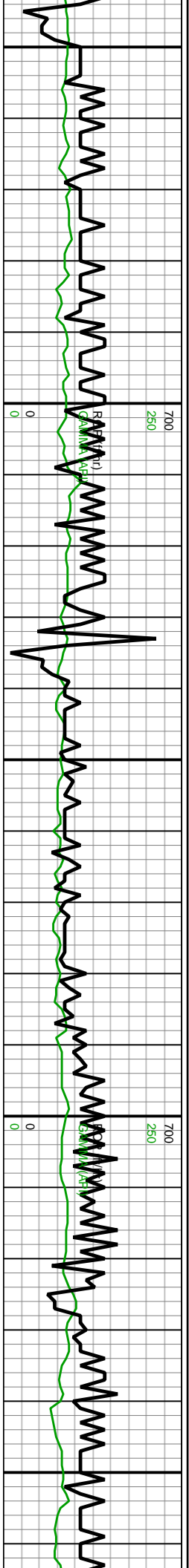
BP

MD: 12,525'
 INC: 89.02°
 AZM: 270.22°
 TVD: 6,551.15'
 VS: 6,365.08'



12,330	12,340	12,350	12,360	12,370	12,380	12,390	12,400	12,410	12,420	12,430	12,440	12,450	12,460	12,470	12,480	12,490	12,500	12,510	12,520	12,530	12,540
TVD (ft)																					
12300-12400 CHK (85%): It brn dk brn dk tn dk gry mott v frm sli hd hd sbiky filky plty vf lam tab cal MRLST (15%): dk gry dk brn sli hd sme v hd filky sbiky plty ip calc w/embdd chk																					
7000																					
TVD (ft)																					
12400-12500 CHK (80%): It brn dk brn mott dk gry v frm sli hd sme hd bkly sbiky filky vf lam tab ffc MRLST (20%): dk gry blik dk brn sli hd sme v hd bkly sbiky filky vf lam silty plty sme calc w/embdd chk																					
7000																					
TVD (ft)																					

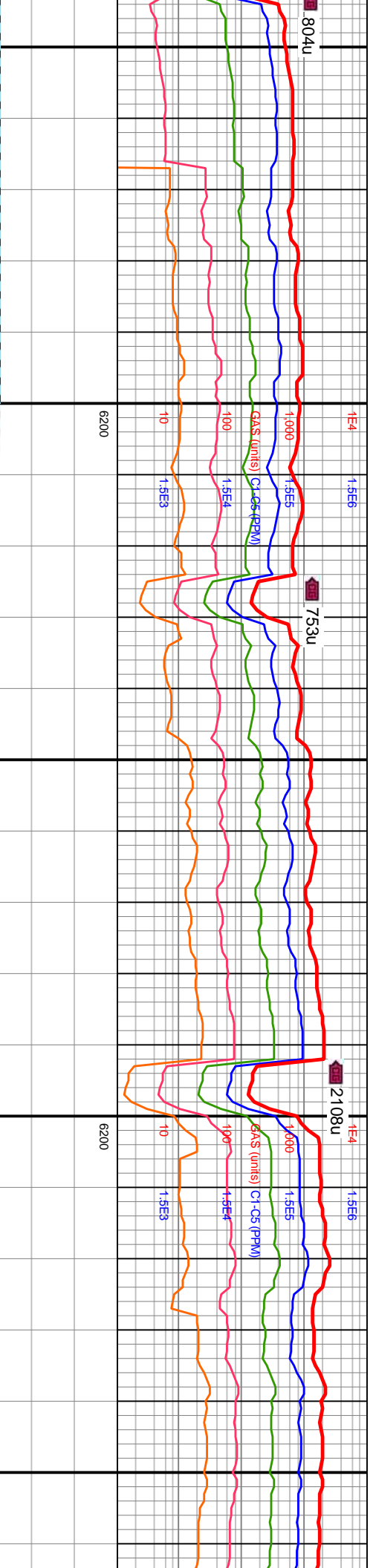




WOB: 16.9klbs
 RPM: 106
 SPM: 185
 SPP: 3.948psi
 MD: 12.615'
 INC: 89.08°
 AZM: 270.12°
 TVD: 6.552.65'
 VS: 6.454.36'

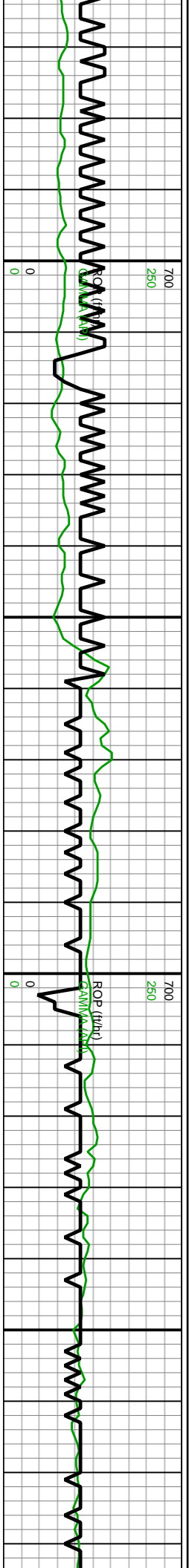
MW IN: 10.0+
 VIS IN: 45
 MW OUT: 10.1
 VIS OUT: 44

MD: 12.705'
 INC: 89.23°
 AZM: 270.25°
 TVD: 6.553.97'
 VS: 6.543.64'

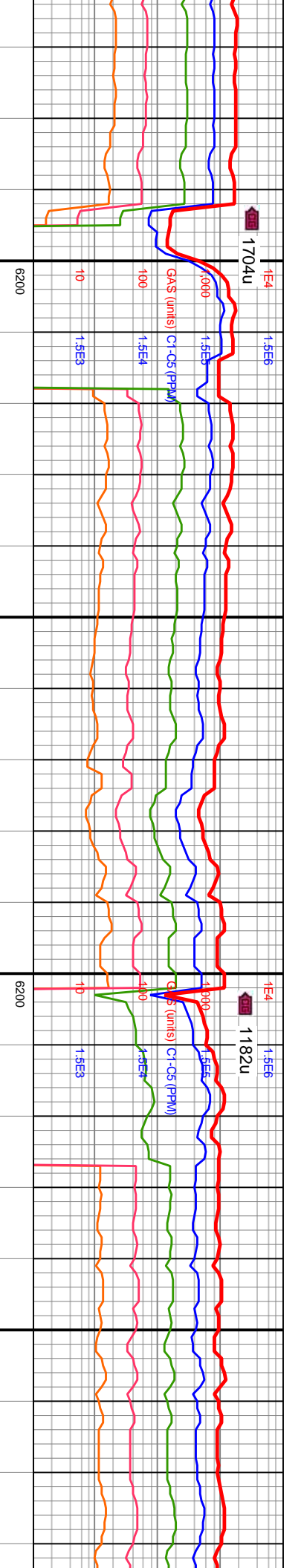


<p>12500-12600 CHK (85%): predy lt brn, dk gry mot, hd-frm, rthy tex, blk-y-sb blk-y, calc, arg, f mmica incl; MRLST (15%): predy dk gry, occ dk brn, mot, frm-sl fri, blk-y-sb blk-y, sb ply, sb wxy, calc w com imbd chk</p>	<p>TVD (ft)</p>	<p>12600-12700 CHK (90%): predy lt brn, dk gry mot, hd-frm, rthy tex, blk-y-sb blk-y, calc, arg, f mmica incl; MRLST (10%): predy dk gry, occ dk brn, mot, frm-sl fri, blk-y-sb blk-y, sb ply, sb wxy, calc w com imbd chk</p>	<p>TVD (ft)</p>	<p>12700-12760</p>
--	-----------------	--	-----------------	--------------------



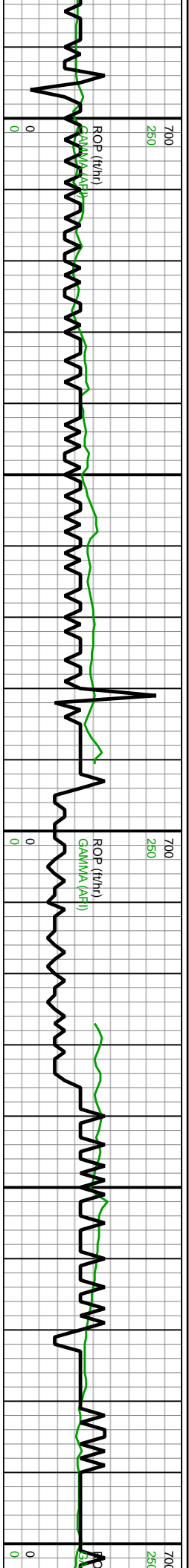


V IN: 10+ MD: 12,794' WOB: 23kbs
 INC: 89.17° RPM: 120
 V OUT: 10+ AZM: 270.25° SPM: 185
 TVD: 6,565.22' SPP: 4.045psi
 VS: 6,631.94'
 MD: 12,883' INC: 89.14°
 AZM: 269.79° TVD: 6,566.53'
 VS: 6,720.2'
 MD: 12,973' INC: 89.57°
 AZM: 270.08° TVD: 6,557.54'
 VS: 6,809.43'



Depth (ft)	Stratigraphic Column	Notes
12,770 - 12,800	800 CHK (90%)	predy lt brn, dk hd-firm, rthy tex, blk-y-sb blk-y, calc, ca incl; MRLST (10%): predy dk k brn, mot, frm-sl fri, blk-y-sb ly, sb wxy lst; calc w com imbd
12,800 - 12,900	12800-12900 CHK (70%)	predy lt brn, dk gry mot, hd-firm, rthy tex, blk-y-sb blk-y, calc, arg, f mmica incl; MRLST (30%): predy dk gry, occ dk brn, mot, frm-sl fri, blk-y-sb blk-y, sb plty, sb wxy, calc w com imbd chk, t foran
12,900 - 13,000	12900-13000 CHK (75%)	predy lt brn, dk gry mot, hd-firm, rthy tex, blk-y-sb blk-y, calc, arg, f mmica incl; MRLST (25%) gry, occ dk brn, mot, frm-sl fri, sb plty, sb wxy, calc w com imbd



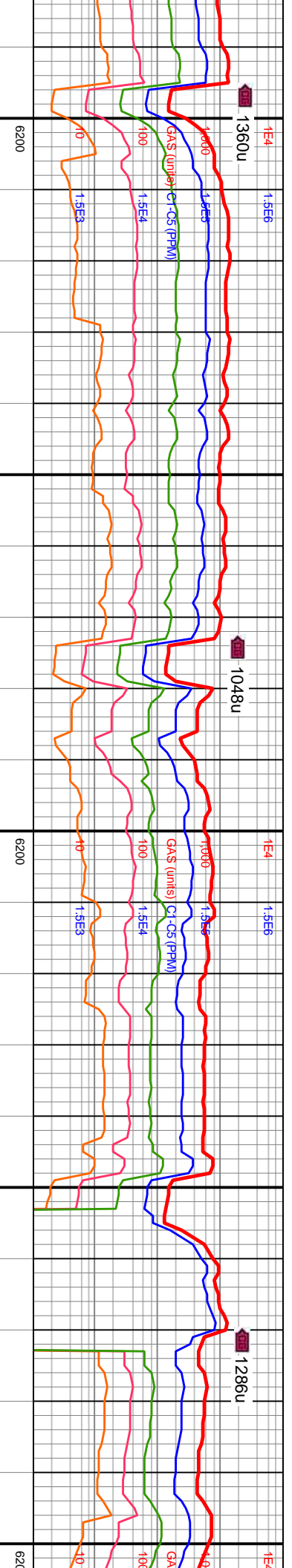


WOB: 22klbs
RPM: 101
SPM: 186
SPP: 4.125psi

MD: 13.063'
INC: 89.29°
AZM: 269.9°
TVD: 6.558.44'
VS: 6.898.68'

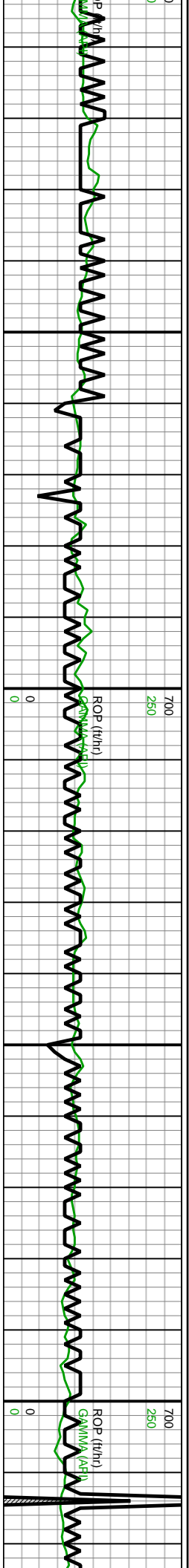
MD: 13.152'
INC: 88.65°
AZM: 270.3°
TVD: 6.560.04'
VS: 6.986.95'

WOB: 22klbs
RPM: 100
SPM: 185
SPP: 4.200



Depth (ft)	Log Description	Gamma Ray Index	ROP (ft/hr)
12,990 - 13,000	dy lt brn, dk sb blkly, calc, o): predy dk blkly-sb blkly, bbd chk	0.00	0
13,000 - 13,100	13000-13100 MRLST (50%): predy dk gry, occ dk brn, mot frm-si fri, blkly-sb blkly, sb plty, sb wxy lstr, calc, imbd chk; CHK (50%): predy lt brn, dk gry mot, hd-frm, rthy tex, blkly-sb blkly, calc, arg, f mmica incl	0.00	0
13,100 - 13,200	13100-13200 CHK (75%): predy lt brn, dk gry mot, hd-frm, rthy tex, blkly-sb blkly, calc, arg, f mmica incl; MRLST (25%): predy dk gry, occ dk brn, mot, frm-si fri, blkly-sb blkly, sb plty, sb wxy, calc w com imbd chk, tr foram	0.00	0





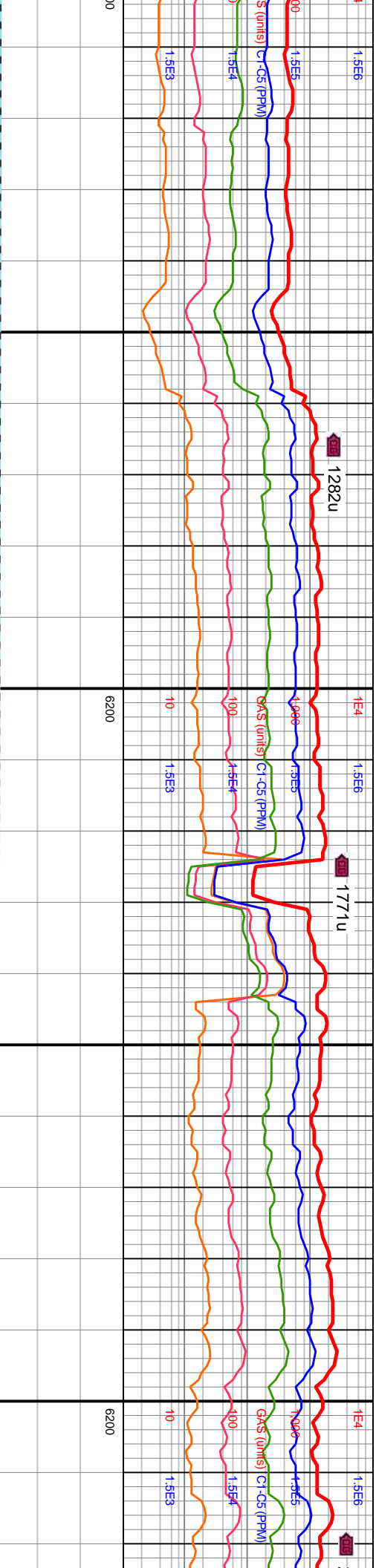
MD: 13,242'
 INC: 88.74°
 AZM: 270.94°
 TVD: 6,562.09'
 VS: 7.076.3'

MD: 13,331'
 INC: 89.08°
 AZM: 271.08°
 TVD: 6,563.78'
 VS: 7.164.73'

MW IN: 10
 VIS IN: 45
 MW OUT: 10
 VIS OUT: 45

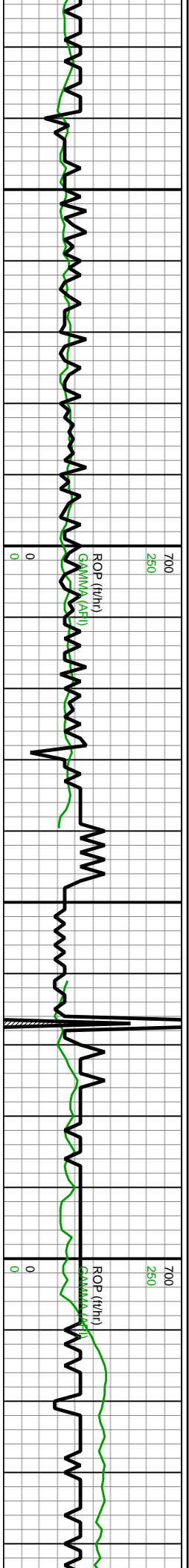
WOB: 20klbs
 RPM: 10
 SPM: 170
 SPP: 3.744psi

MD: 13,42
 INC: 88.55
 AZM: 271.
 TVD: 6,566
 VS: 7.254.



Depth (ft)	Stratigraphic Column	Gamma (API)	TVD (ft)
13200-13300	CHK (80%): predy lt brn, dk gry mot, hd-frn, rthy tex, blk-y-sb blk-y, calc, arg, f mmica incl; MRLST (20%): predy dk gry, occ dk brn, mot, frm-sl fri, blk-y-sb blk-y, sb ply, sb wxy, calc w com imbd chk	7000	7000
13300-13400	CHK (85%): predy lt brn, dk gry mot, hd-frn, rthy tex, blk-y-sb blk-y, calc, arg, f mmica incl; MRLST (15%): predy dk gry, occ dk brn, mot, frm-sl fri, blk-y-sb blk-y, sb ply, sb wxy lstr, calc w com imbd chk	7000	7000





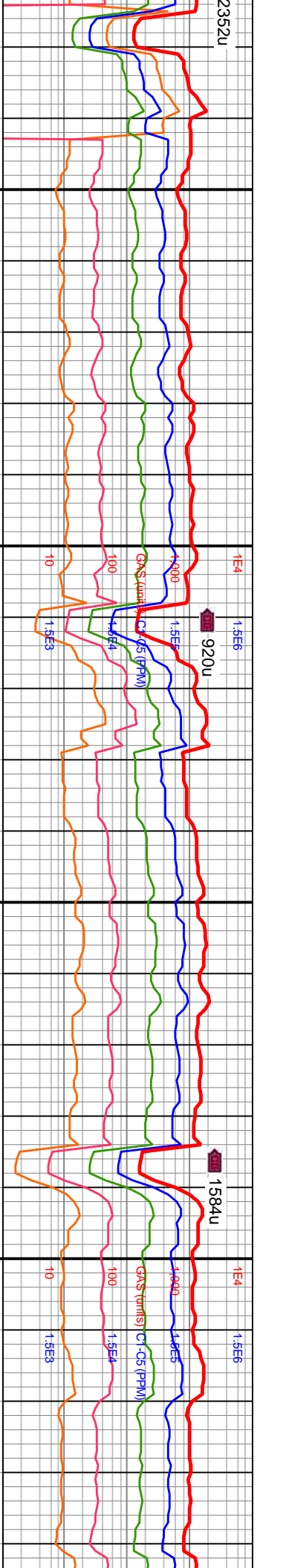
13430 13440 13450 13460 13470 13480 13490 13500 13510 13520 13530 13540 13550 13560 13570 13580 13590 13600 13610 13620 13630 13640

MW IN: 10
 VIS IN: 45
 MW OUT: 10
 VIS OUT: 44

MD: 13,511'
 INC: 88.58°
 AZM: 271.05°
 TVD: 6,567.89'
 VS: 7,343.61'

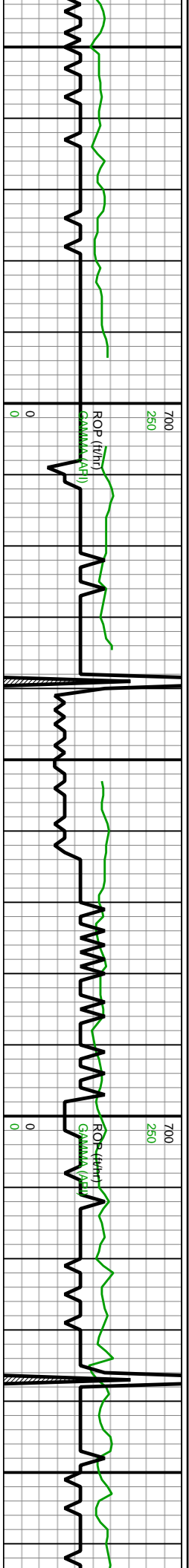
WOB: 27klbs
 RPM: 101
 SPM: 180
 SPP: 4,101psi

MD: 13,601'
 INC: 89.72°
 AZM: 271.39°
 TVD: 6,569.23'
 VS: 7,433.08'



13400-13500 CHK (90%): predy lt brn, dk gry mot, hd-frm, rthy tex, blkv-sb blkv, calc, arg, f mmica incl; MRLST (10%): predy dk gry, occ dk brn, mot, frm-sl fri, blkv-sb blkv, sb plty, sb wxy, calc w com imbd chk, tr pyr	7000
13500-13600 CHK (85%): predy lt brn, dk gry mot, hd-frm, rthy tex, blkv-sb blkv, calc, arg, f mmica incl; MRLST (15%): predy dk gry, occ dk brn, mot, frm-sl fri, blkv-sb blkv, sb plty, sb wxy lstr, calc w com imbd chk	7000



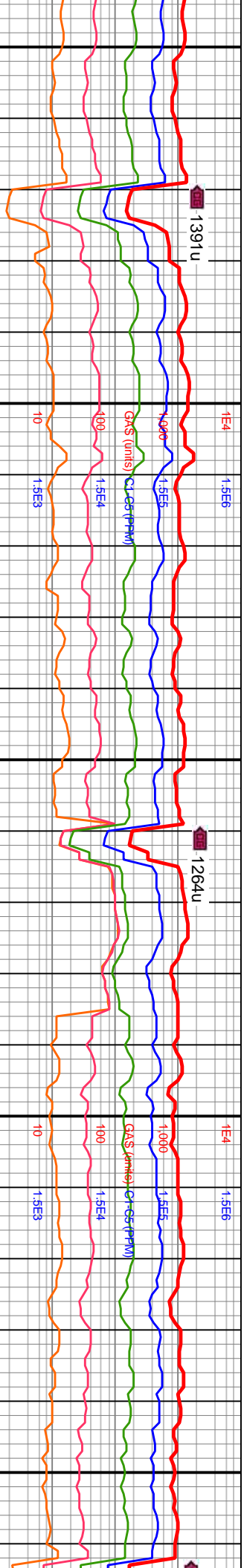


MD: 13,690'
 INC: 89.26°
 AZM: 271.1°
 TVD: 6,570.02'
 VS: 7,521.56'

MW IN: 10
 VIS IN: 45
 MW OUT: 10
 VIS OUT: 44

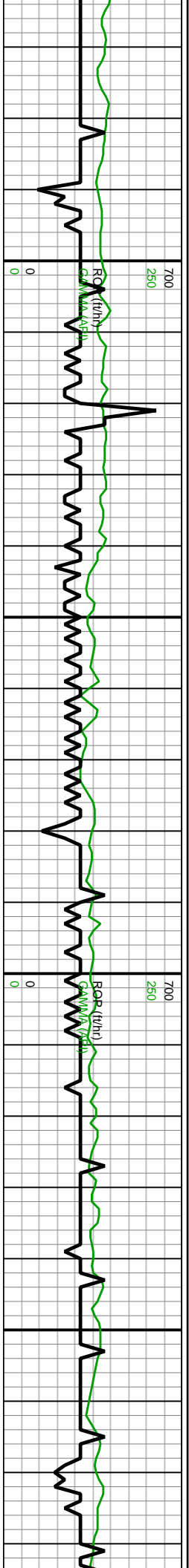
MD: 13,780'
 INC: 89.29°
 AZM: 269.91°
 TVD: 6,571.16'
 VS: 7,610.91'

WOB: 26klbs
 RPM: 120
 SPM: 179
 SPP: 4,106psi

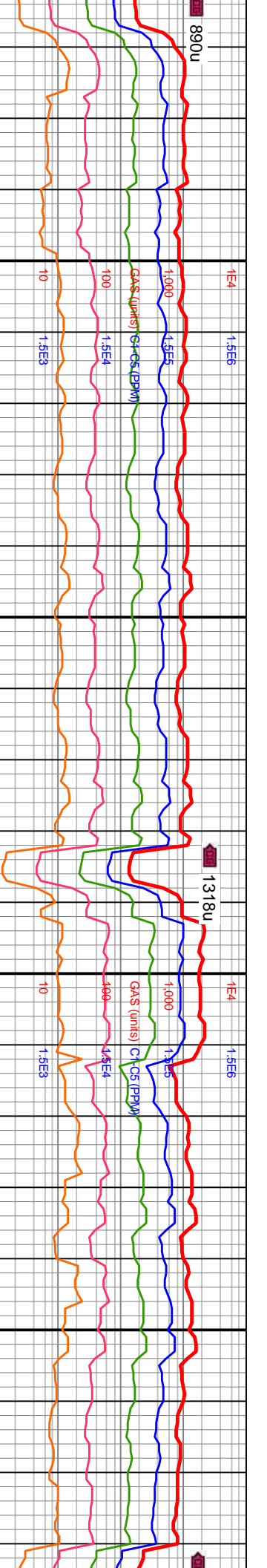


13600-13700 MRLST (50%): predy dk gry, occ dk brn, mot, frm-sl fri, blkly-sb blkly, sb plty, sb wxy, calc, imbd chk; CHK (50%): predy lt brn, dk gry mot, hd-frm, rthy tex, blkly-sb blkly, blkly-sb blkly, calc, arg, f mmica incl	7000
13700-13800 CHK (55%): predy lt brn, dk gry mot, hd-frm, rthy tex, blkly-sb blkly, calc, arg, f mmica incl; MRLST (45%): predy dk gry, occ dk brn, mot, frm-sl fri, blkly-sb blkly, sb plty, sb wxy lstr, calc w imbd chk	7000
13800-139	

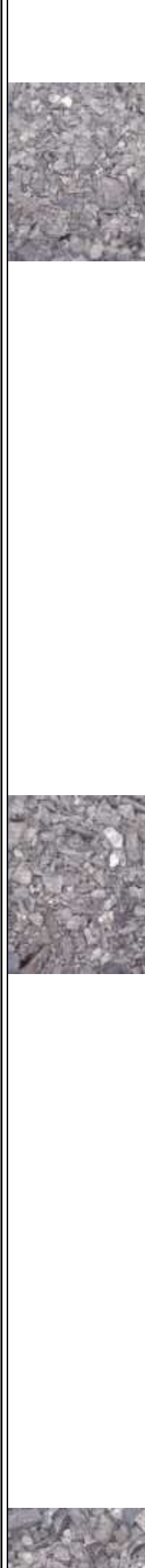


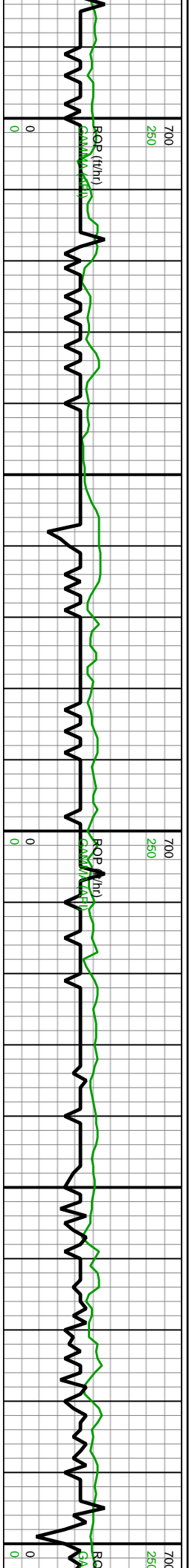


MD: 13.870' INC: 89.23° AZM: 270.01° TVD: 6.572.32' VS: 7.700.15'
 MD: 13.959' INC: 89.2° AZM: 270.08° TVD: 6.573.54' VS: 7.788.41'
 MD: 14.048' INC: 89.42° AZM: 270.19° TVD: 6.574.61' VS: 7.876.69'



Depth (ft)	Log Description	TVD (ft)
13,870 - 13,900	00 CHK (65%): predy lt brn, dk hd-frn, rthy tex, blk-y-sb blk-y, calc, a incl; MRLST (35%): predy dk brn, mot, frm-sl fri, blk-y-sb blk-y, wxy lstr, calc w com imbd chk	7000
13,900 - 14,000	13900-14000 CHK (70%): predy lt brn, dk gry mot, hd-frn, rthy tex, blk-y-sb blk-y, calc, arg, f mmica incl; MRLST (30%): predy dk gry, occ dk brn, mot, frm-sl fri, blk-y-sb blk-y, sb plty, sb wxy lstr, calc w com imbd chk, tr foram	7000
14,000 - 14,100	14000-14100 CHK (70%): predy lt brn, dk gry mot, hd-frn, rthy tex, blk-y-sb blk-y, calc, arg, f mmica incl; MRLST (30%): predy dk gry, occ dk brn, mot, frm-sl fri, blk-y-sb blk-y, sb plty, sb wxy lstr, com imbd chk	7000



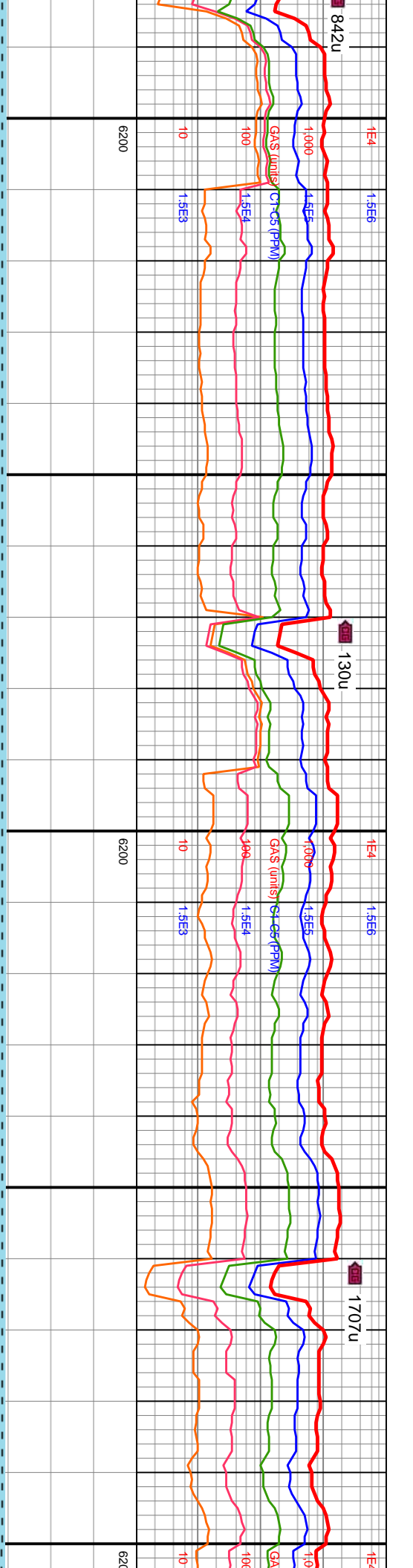


MD: 14,138
 INC: 89.54°
 AZM: 270.07°
 TVD: 6,575.43'
 VS: 7,965.97'

 MW IN: 10
 VIS IN: 45
 MW OUT: 10
 VIS OUT: 45

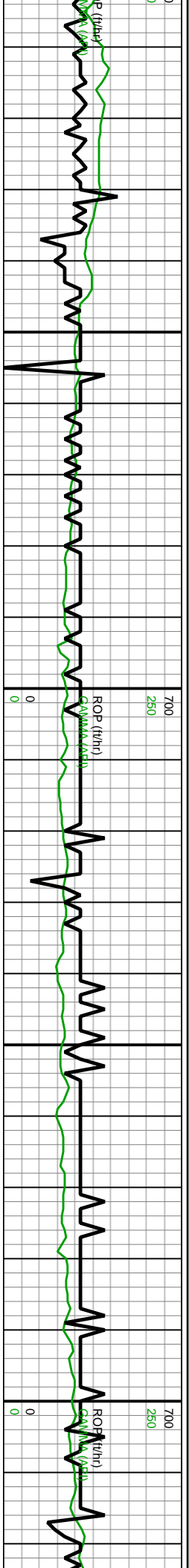
 WOB: 25kibs
 RPM: 101
 SPM: 185
 SPP: 4.334psi

 MD: 14,228
 INC: 89.32°
 AZM: 269.96°
 TVD: 6,576.33'
 VS: 8,055.22'



Interval	CHK (%)	Description	Depth (ft)
14100-14200	75%	predy lt brn, dk gry mot, hd-firm, rthy tex, blk-ys blk, calc, arg, f mmica incl; MRLST (25%): predy dk gry, occ dk brn, mot, frm-sl fri, blk-ys blk, sb ply, sb wxy lstr, calc w com imbd chk	7000
14200-14300	70%	predy lt brn, dk gry mot, hd-firm, rthy tex, blk-ys blk, calc, arg, f mmica incl; MRLST (30%): predy dk gry, occ dk brn, mot, frm-sl fri, blk-ys blk, sb ply, sb wxy lstr, calc w com imbd chk, tr foram	700



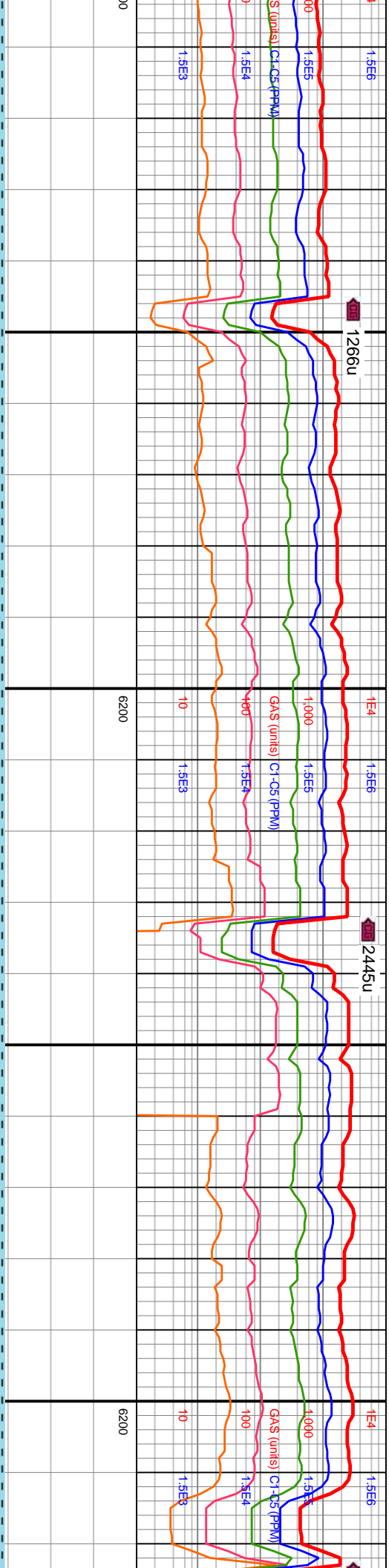


MD: 14,318
 INC: 88.99°
 AZM: 269.9°
 TVD: 6,577.65'
 VS: 8,144.45'

MW IN: 10
 VIS IN: 45
 MW OUT: 10
 VIS OUT: 45
 WOB: 22klbs
 RPM: 101
 SPM: 186
 SPP: 4.321psi

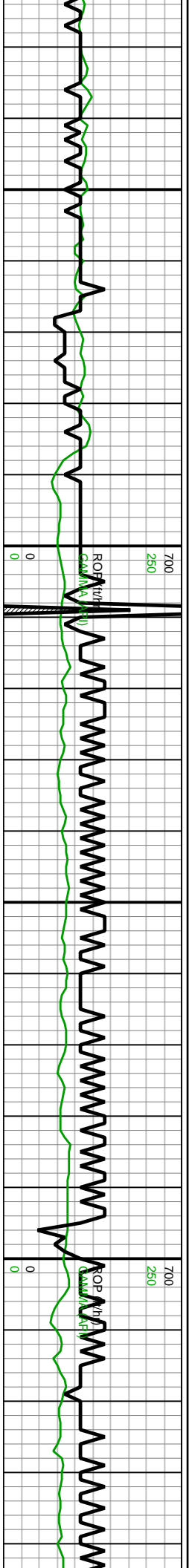
MD: 14,408
 INC: 89.35°
 AZM: 270.03°
 TVD: 6,578.96'
 VS: 8,233.69'

MD: 14,498
 INC: 89.42°
 AZM: 270.1°
 TVD: 6,579.92'
 VS: 8,322.95'



Depth (ft)	Description	TVD (ft)
14300-14400	CHK (80%): predy lt brn, dk gry mot, hd-frn, rthy tex, blk-y-sb blk-y, calc, arg, f m mica incl, MRLST (20%): predy dk gry, occ dk brn, mot, frm-sl fri, blk-y-sb blk-y, sb ply, sb wxy lstr, calc w com imbd chk	7000
14400-14500	CHK (85%): predy lt brn, dk gry mot, hd-frn, rthy tex, blk-y-sb blk-y, calc, arg, f m mica incl, MRLST (15%): predy dk gry, occ dk brn, mot, frm-sl fri, blk-y-sb blk-y, sb ply, sb wxy lstr, com imbd chk, calc	7000

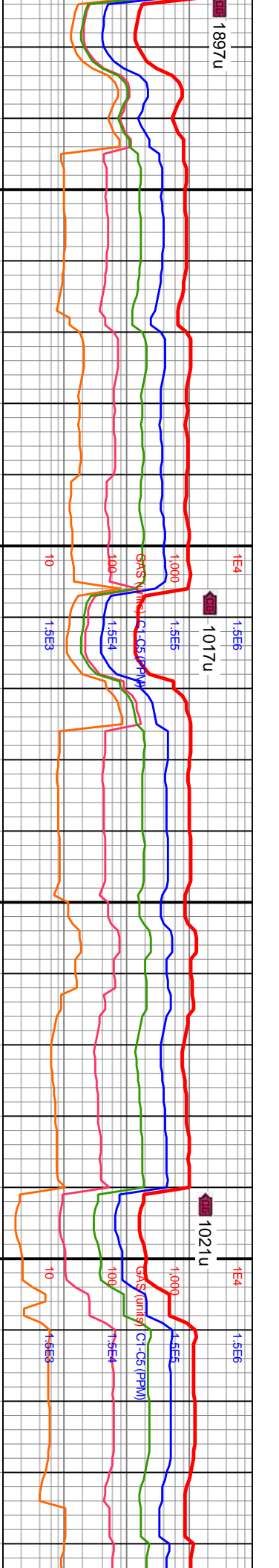




MD: 14,587' MOB: 25k/lbs
 INC: 89.48° RPM: 100
 AZM: 270.42° SPM: 186
 TVD: 6,580.78' SPP: 4.312psi
 VS: 8,411.26'

MD: 14,676' 14,701' MD / 6,582' TVD
 INC: 89.66°
 AZM: 270.2°
 TVD: 6,581.45'
 VS: 8,499.58'

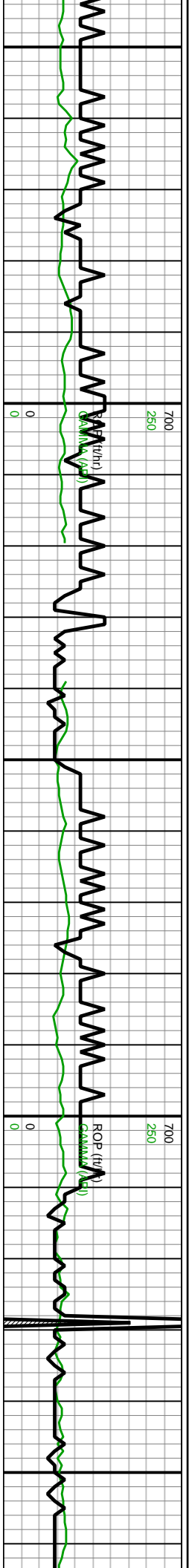
MW IN: 10
 VIS IN: 45
 MW OUT: 10
 VIS OUT: 45



14500-14600 CHK (95%): predy lt brn, dk gry mot, hd-frm, rthy tex, blkysb blkly, calc, arg, f mmica incl; MRLST (5%): predy dk gry, occ dk brn, mot, frm-sl fri, blkysb blkly, sb plty, sb wxy lstr, calc w com imbd chk, tr foram

14600-14700 CHK (90%): predy lt brn, dk gry mot, hd-frm, rthy tex, blkysb blkly, calc, arg, f mmica incl; MRLST (10%): predy dk gry, occ dk brn, mot, frm-sl fri, blkysb blkly, sb plty, sb wxy lstr, com imbd chk, calc



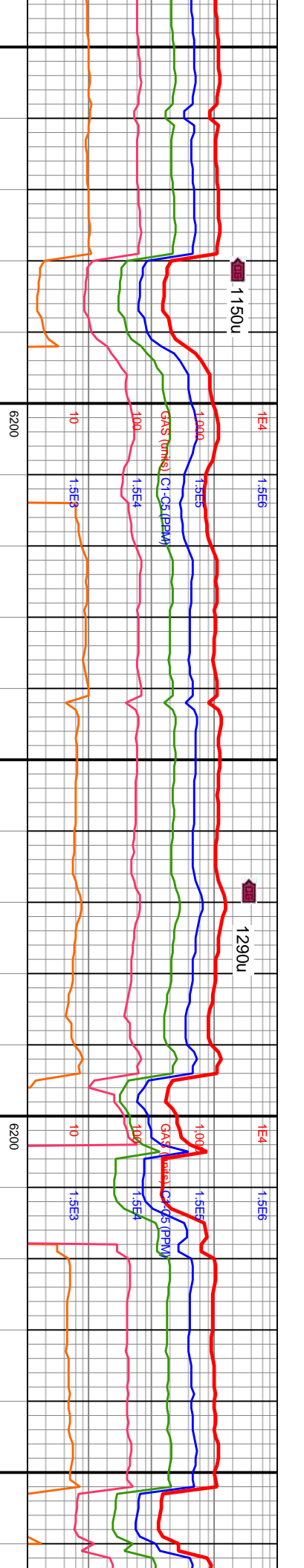


MD: 14,766'
 INC: 89.78°
 AZM: 270.34°
 TVD: 6,581.89'
 VS: 8,588.89'

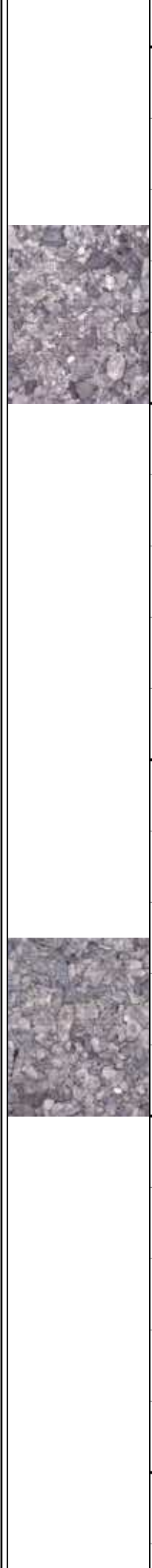
MD: 14,856'
 INC: 89.82°
 AZM: 270.4°
 TVD: 6,582.2'
 VS: 8,678.22'

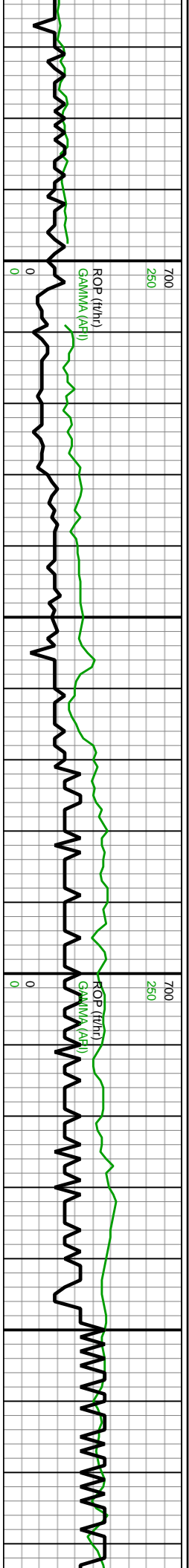
MW IN: 10
 VIS IN: 45
 MW OUT: 10
 VIS OUT: 44

MD: 14,946'
 INC: 89.45°
 AZM: 270.58°
 TVD: 6,582.77'
 VS: 8,767.56'



Interval	Description	7000	7000
14700-14800	CHK (85%): predy lt brn, dk gry mot, hd-frm, rthy tex, blk-y-sb blk-y, calc, arg, f mmica incl; MRLST (15%): predy dk gry, occ dk brn, mot, frm-sl fri, blk-y-sb blk-y, sb ply, sb wxy lstr, calc w com imbd chk, tr foram	7000	7000
14800-14900	CHK (90%): predy lt brn, dk gry mot, hd-frm, rthy tex, blk-y-sb blk-y, calc, arg, f mmica incl; MRLST (10%): predy dk gry, occ dk brn, mot, frm-sl fri, blk-y-sb blk-y, sb ply, sb wxy lstr, calc w com imbd chk	7000	7000
14900-15000	gry mot, hd-frm, rthy tex, blk-y-sb blk-y, calc, arg, f mmica incl; MRLST (10%): predy dk gry, occ dk brn, mot, frm-sl fri, blk-y-sb blk-y, sb ply, sb wxy lstr, calc w com imbd chk	7000	7000



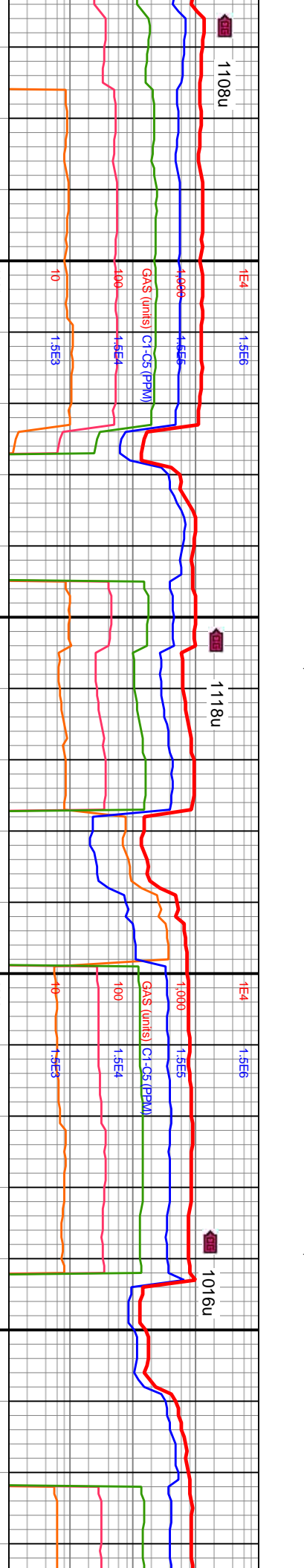


WOB: 8kbs
 RPM: 100
 SPM: 185
 SPP: 4.013psi

MW IN: 10
 VIS IN: 44
 MW OUT: 10
 VIS OUT: 44

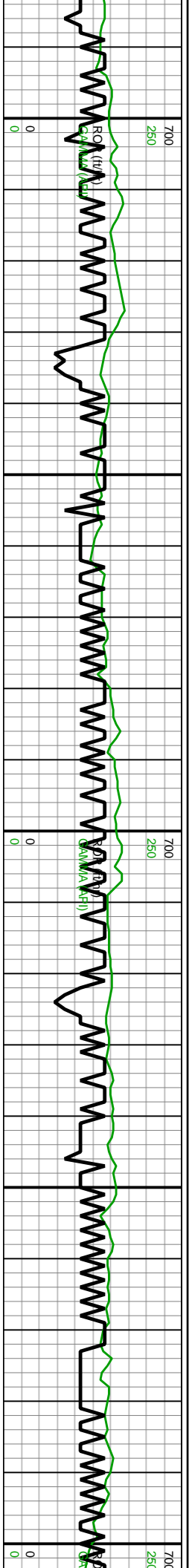
MD: 15.059'
 INC: 87.63°
 AZM: 270.25°
 TVD: 6.585.04'
 VS: 8.855.87'

MD: 15.148'
 INC: 87.45°
 AZM: 269.91°
 TVD: 6.588.86'
 VS: 8.944.07'



Depth (ft)	ROP (ft/hr)	GAMMA (API)	Notes
14,970 - 15,000	~0	~0	15000-15100 CHK (30%): predy lt brn, dk gry mot, hd frm, rthy tex, blk-y-sb blk-y, calc, arg, f mmica inci; MRLST (70%): predy dk gry, occ dk brn, mot, frm-si fri, blk-y-sb blk-y, sb plty, sb wxy isfr, calc w com imbd chk
15,000 - 15,050	~0	~0	15000-15100 CHK (30%): predy lt brn, dk gry mot, hd frm, rthy tex, blk-y-sb blk-y, calc, arg, f mmica inci; MRLST (70%): predy dk gry, occ dk brn, mot, frm-si fri, blk-y-sb blk-y, sb plty, sb wxy isfr, calc w com imbd chk
15,050 - 15,100	~0	~0	15000-15100 CHK (30%): predy lt brn, dk gry mot, hd frm, rthy tex, blk-y-sb blk-y, calc, arg, f mmica inci; MRLST (70%): predy dk gry, occ dk brn, mot, frm-si fri, blk-y-sb blk-y, sb plty, sb wxy isfr, calc w com imbd chk
15,100 - 15,150	~0	~0	15100-15200 CHK (25%): pre md brn dk gry mott frm sil hd s blk-y calc arg tr drusy pyr tr calc MRLST (75%): pred dk gry bil frm sil hd blk-y blk-y plty calc v tr drusy pyr
15,150 - 15,180	~0	~0	15100-15200 CHK (25%): pre md brn dk gry mott frm sil hd s blk-y calc arg tr drusy pyr tr calc MRLST (75%): pred dk gry bil frm sil hd blk-y blk-y plty calc v tr drusy pyr





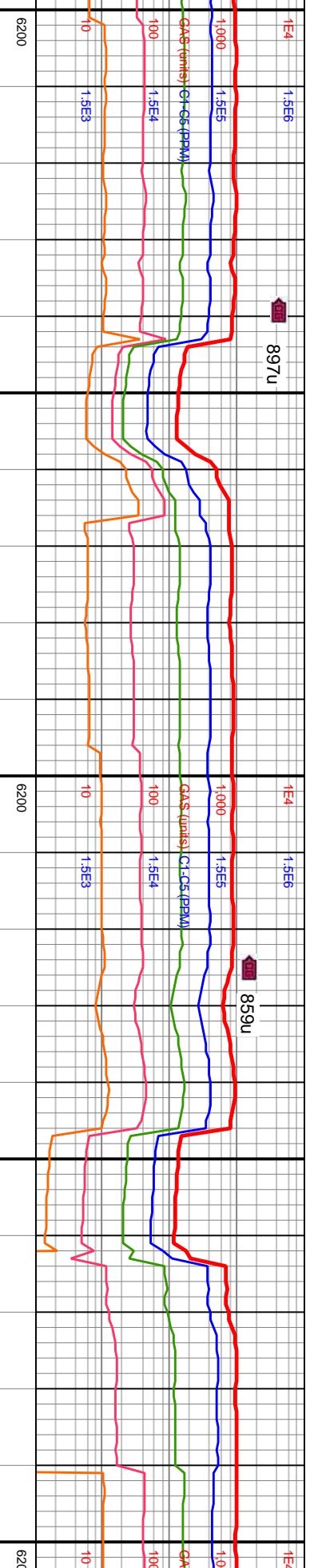
MOB: 25.5kbs
 RPM: 101
 SPM: 186
 SPP: 4.352psi

MD: 15,238'
 INC: 87.38°
 AZM: 270.02°
 TVD: 6,592.92'
 VS: 9,033.23'

MW IN: 10
 VIS IN: 44
 MW OUT: 10
 VIS OUT: 44

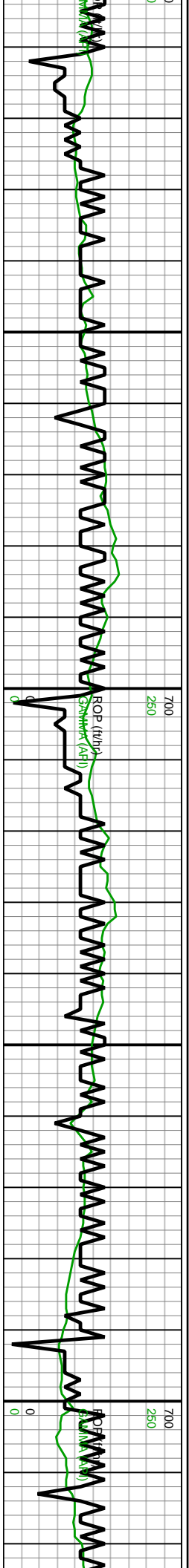
MD: 15,327'
 INC: 87.51°
 AZM: 269.98°
 TVD: 6,596.89'
 VS: 9,121.4'

MOB:
 RPM: 1
 SPM: 1
 SPP: 4



15200-15300 CHK (10%): pred lt brn sme md brn mott v frm sli hd blkly sbkly calc arg tr vfd grnlr micmic MRLST (90%): pred dk gry blk dk brn mott frm sli hd blkly sbkly ply calc w/embdd chk tr ftc	15300-15400 CHK (25%): lt md brn dk gry mott frm sli hd blkly sbkly filky calc arg slty tr drisy pyr MRLST (75%): pred dk gry dk brn mott blk sli frm sli hd blkly sbkly sbply calc w/embdd chk tr ftc tr vfd grnlr micmic
--	--





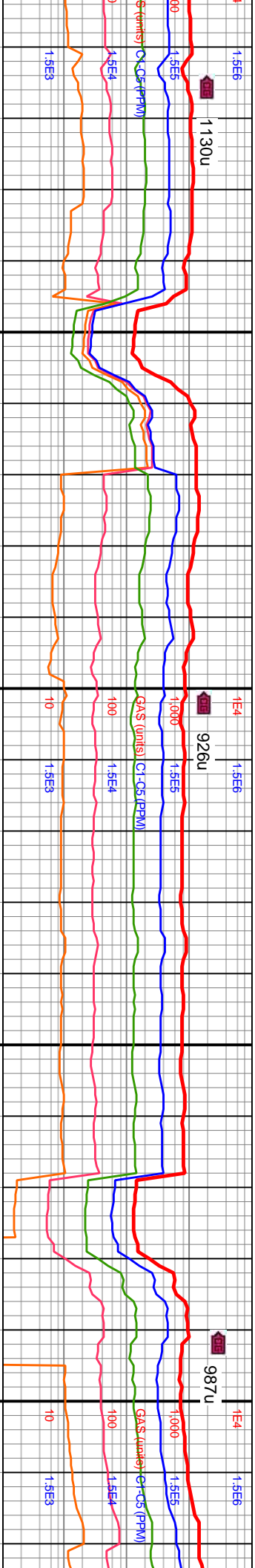
MD: 15.417'
 INC: 87.38°
 AZM: 270.01°
 TVD: 6.600.9'

MMW IN: 10
 VIS IN: 44
 MMW OUT: 10.1
 VIS OUT: 44

MD: 15.507'
 INC: 87.26°
 AZM: 269.87°
 TVD: 6.605.11'

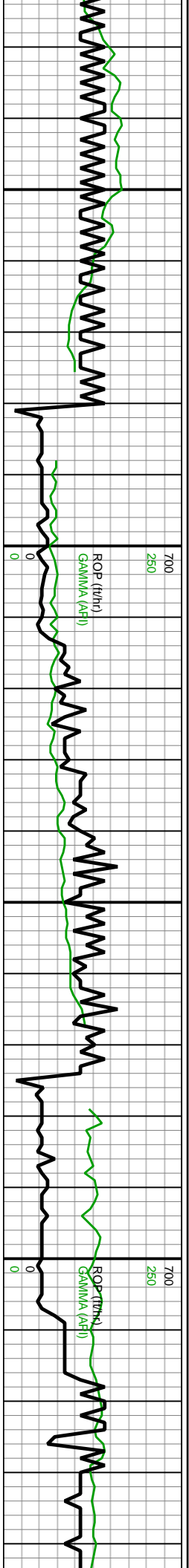
MD: 15.597'
 INC: 87.35°
 AZM: 269.94°
 TVD: 6.609.34'

WOB: 28.2kIbs
 RPM: 109
 SPM: 186
 SPP: 4.455psi



Depth (ft)	15400-15500	15500-15600
15400-15500	CHK (40%): mott lt md brn frn sli hd blkly flky calc arg tr vfd grnlr pyr MRLST (60%): pred dk gry dk brn mott sli frn sli hd blkly sbiky ply calc w/embdd chk tr tab ffc tr vfd grnlr pyr	CHK (60%): lt md brn dk gry mott v frn sli hd blkly sbiky flky calc arg tr drsy pyr tr free pyr MRLST (40%): pred dk gry sme lt gry dk brn mott frn sli hd sme hd blkly sbiky sbply calc w/embdd chk mod ffc tr vfd grnlr micmic





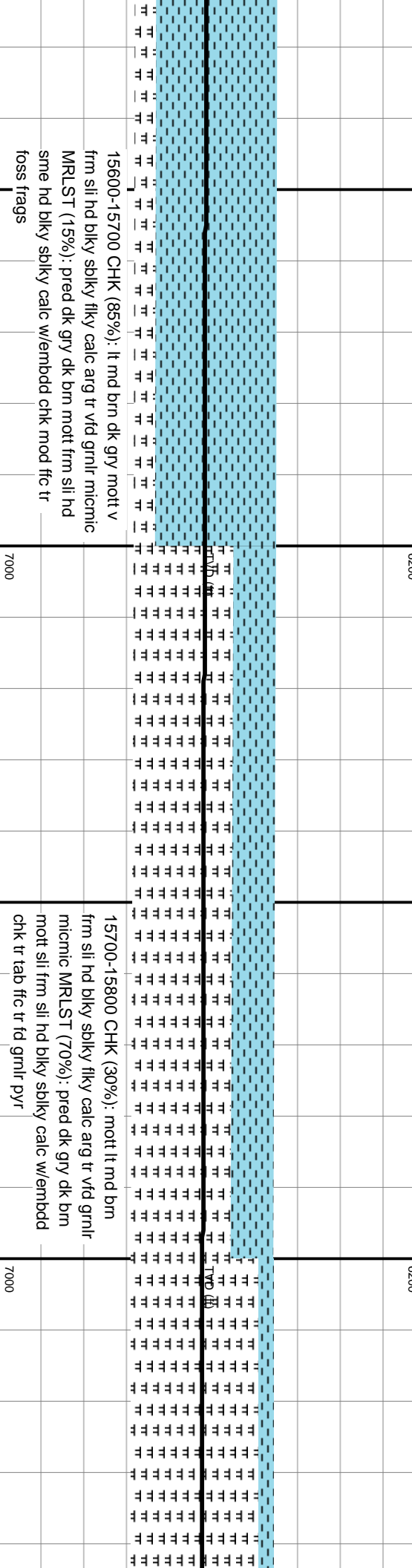
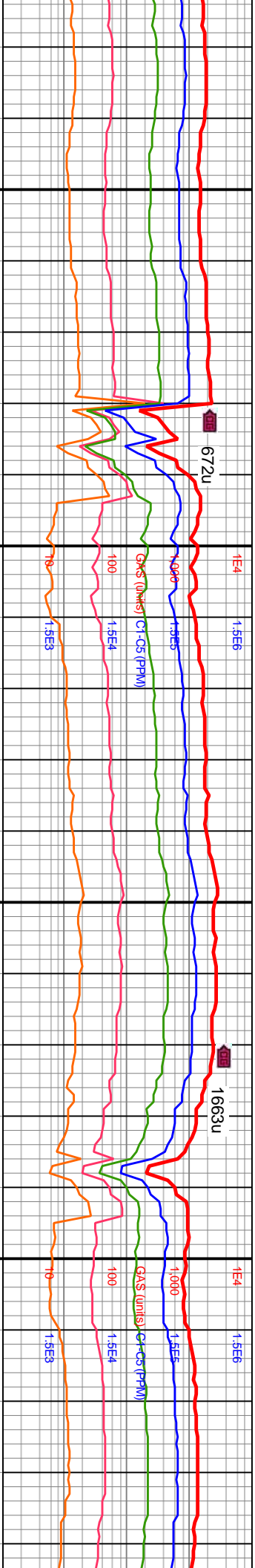
MW IN: 10
 VIS IN: 45
 MW OUT: 10.1
 VIS OUT: 45

Fault expected...: placing us higher in zone
 15,680 MID

MD: 15,687'
 INC: 87.45°
 AZM: 270.01°
 TVD: 6,613.42'
 VS: 9,478.01'

MD: 15,777'
 INC: 88.06°
 AZM: 269.85°
 TVD: 6,616.95'
 VS: 9,567.18'

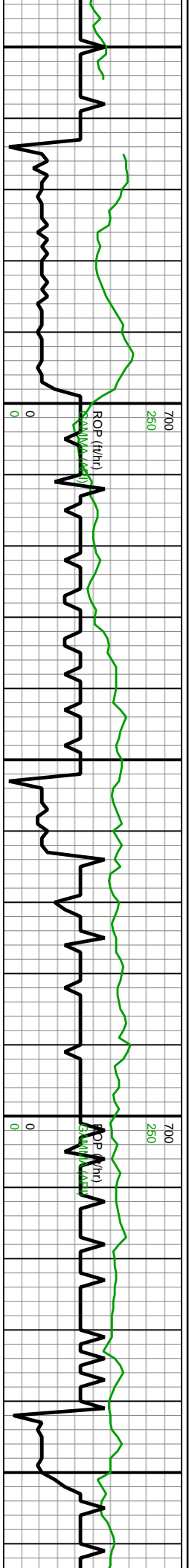
WOB: 14.7klbs
 RPM: 109
 SPM: 187
 SPP: 3.427psi



15600-15700 CHK (85%): It md brn dk gry mott v
 frm sli hd blkly sbkly flky calc arg tr vfd grnlr micmic
 MRLST (15%): pred dk gry dk brn mott frm sli hd
 sme hd blkly sbkly calc w/embdd chk mod ffc tr
 foss frags

15700-15800 CHK (30%): mott lt md brn
 frm sli hd blkly sbkly flky calc arg tr vfd grnlr
 micmic MRLST (70%): pred dk gry dk brn
 mott sli frm sli hd blkly sbkly calc w/embdd
 chk tr tab ffc tr fd grnlr pyr





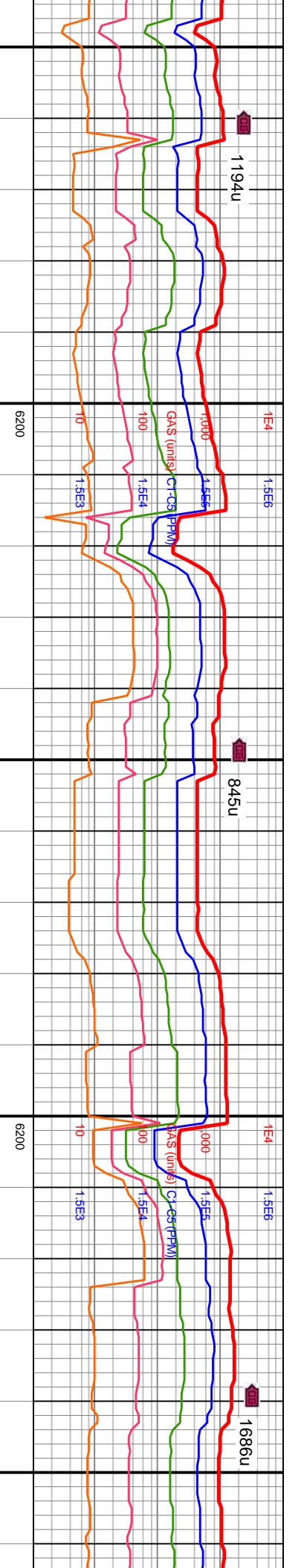
MMW IN: 10
VIS IN: 45
MMW OUT: 10.0
VIS OUT: 45

MD: 15.866'
INC: 89.72°
AZM: 270.05°
TVD: 6,618.67'
VS: 9.655,41'

MD: 15.955'
INC: 88.77°
AZM: 271.17°
TVD: 6,619.84'
VS: 9.743,78'

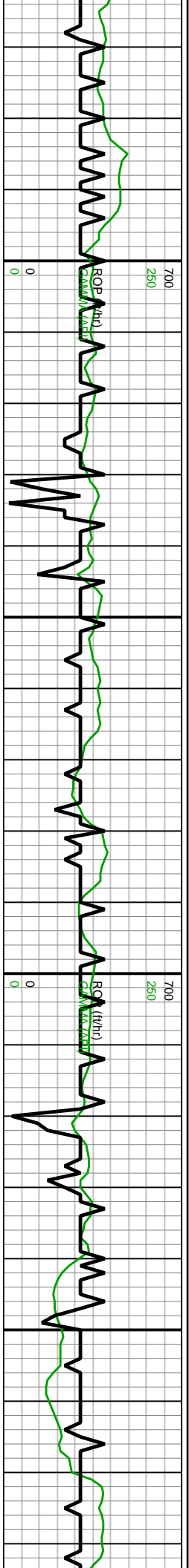
WOB: 24.5klbs
RPM: 114
SPM: 185
SPP: 4.396psi

MD: 16.045'
INC: 89.23°
AZM: 271.44°
TVD: 6,621.42'
VS: 9.833,26'



15800-15900 CHK (10%): It brn mott frm sli hd blkly pily calc arg mod vfd grnlr micmic MRLST (90%): pred dk gry dk brn mott v frm sli hd blkly sbkly pily calc w/embdd chk tr drusy pyr	7000	6200	15900-16000 CHK (10%): It brn dk gry mott frm sli hd blkly sbkly calc mod MRLST (90%): pred dk gry It md gry blk mott v frm sli hd britt blkly sbkly pily calc w/embdd chk mod fd grnlr pyr	7000	6200	16000-16100 C	7000
---	------	------	---	------	------	---------------	------



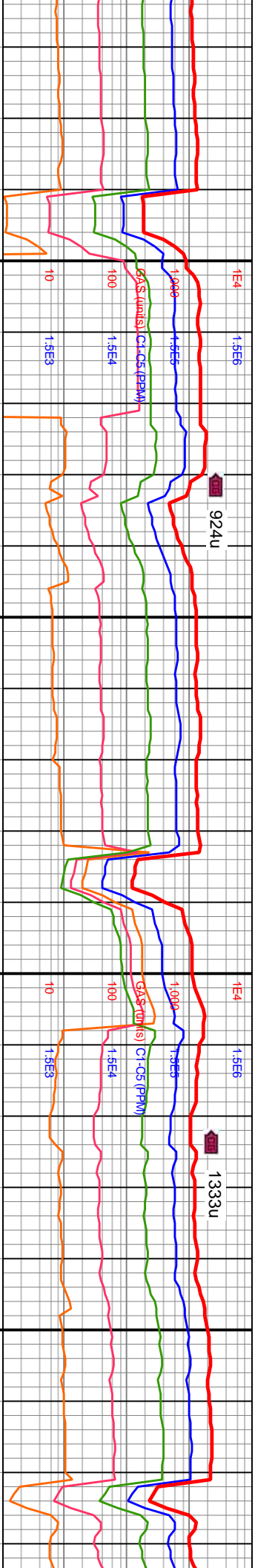


MD: 16,134'
 INC: 88.92°
 AZM: 271.29°
 TVD: 6,622.85'
 VS: 9.921.76'

WOB: 30klbs
 RPM: 107
 SPM: 186
 SPP: 4.551psi

MD: 16,224'
 INC: 88.8°
 AZM: 270.85°
 TVD: 6,624.64'
 VS: 10,011.2'

MW IN: 10
 VIS IN: 46
 MW OUT: 10.1
 VIS OUT: 45



HK (35%): lt md brn mott dk gry	16100-16200	CHK (30%): mott lt md brn	16200-16300	CHK (65%): lt md brn
blky filky calc arg mod fd grnlr pyr	16200-16220	frn sll hd blky sbiky filky calc mod fd grnlr pyr	16220-16240	frn sll hd blky sbiky filky calc arg mc
r free pyr MRLST (65%): pred dk	16240-16260	MRLST (70%): pred dk gry dk brn mott sll	16260-16280	MRLST (35%): dk gry lt md gry dk t
sli frn sll hd blky sbiky calc	16280-16300	frn sll hd blky sbiky calc w/embdd chk tr tab	16300-16320	sll hd sme v hd blky sbiky plty sbpht
ffc mod foss frags	16320-16340	ffc mod drusy pyr	16340-16360	w/embdd chk

