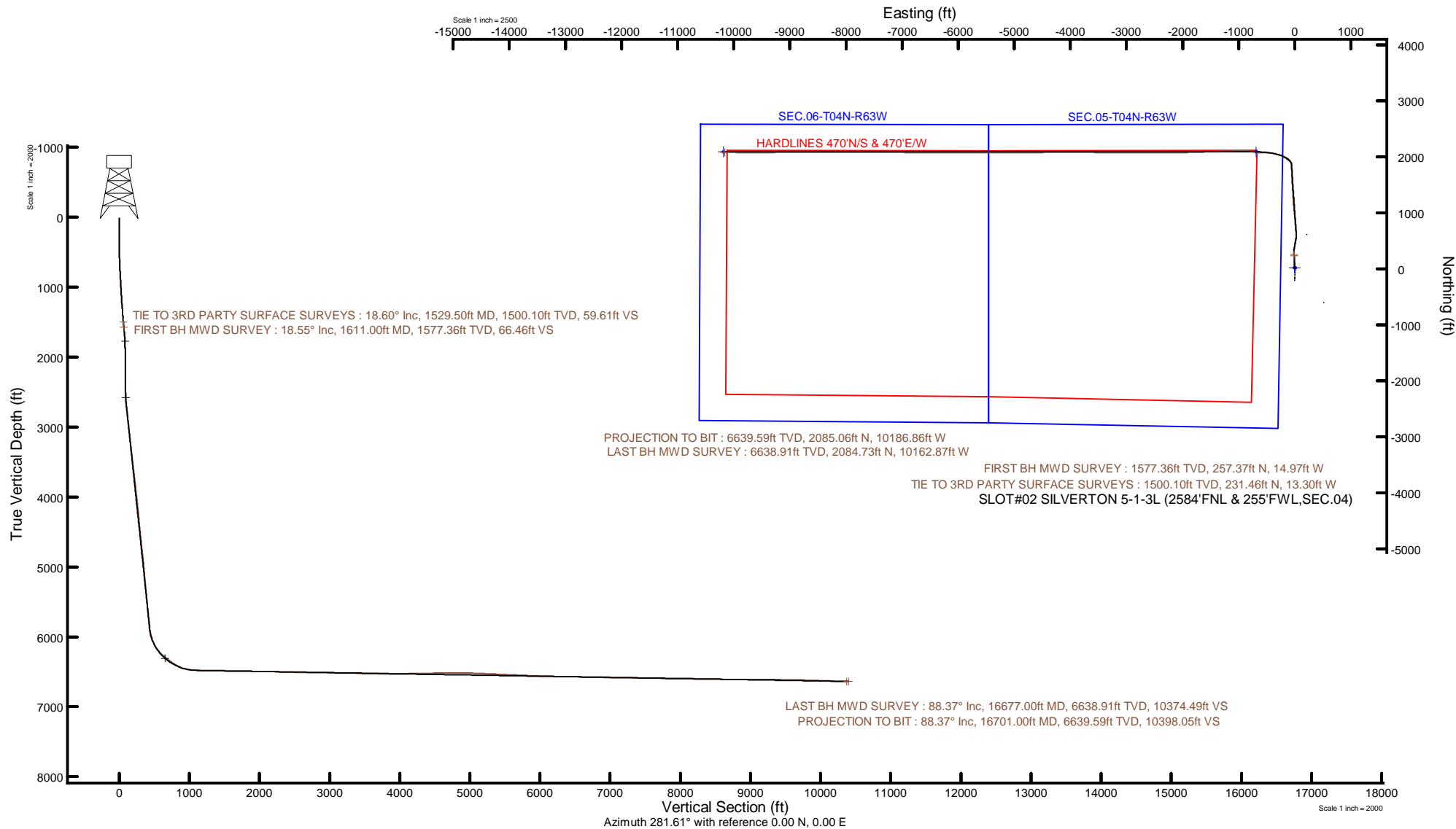


CONFLUENCE RESOURCES

Location: COLORADO Slot: SLOT#02 SILVERTON 5-1-3L (2584'FNL & 255'FWL,SEC.04)
 Field: WELD COUNTY (NAD83, TRUE NORTH) Well: SILVERTON 5-1-3L
 Facility: SEC.04-T04N-R63W Wellbore: SILVERTON 5-1-3L PWB



Plot reference wellpath is SILVERTON 5-1-3L PWB Rev-C.0	Grid System: NAD83 / Lambert Colorado SP, Northern Zone (501), US feet
True vertical depths are referenced to Ensign 162 (23) (RKB)	North Reference: True north
Reference wellpath measured depths are referenced to Ensign 162 (23) (RKB)	Scale: True distance
Ensign 162 (23) (RKB) to Mean Sea Level: 4647 feet	Coordinates are in feet referenced to Slot
Mean Sea Level to Mud line (At Slot: SLOT#02 SILVERTON 5-1-3L (2584'FNL & 255'FWL,SEC.04)): 0 feet	Depths are in feet
Offset wellpath MDs are referenced to each path's default MD datum	Created by: painsetr on 2020-11-19; Database: WellArchitectDB



REFERENCE WELLPATH IDENTIFICATION			
Operator	CONFLUENCE RESOURCES	Well	SILVERTON 5-1-3L
Field	WELD COUNTY (NAD83, TRUE NORTH)	API/Legal	
Facility	SEC.04-T04N-R63W	Wellbore	SILVERTON 5-1-3L AWB
Slot	SLOT#02 SILVERTON 5-1-3L (2584'FNL & 255'FWL,SEC.04)		

REPORT SETUP INFORMATION			
Projection System	NAD83 / Lambert Colorado SP, Northern Zone (501), US feet	Software System	WellArchitect® 6.0
North Reference	True	User	Painsetr
Scale	0.999958	Report Generated	11/19/2020 at 1:21:50 PM
Convergence at slot	0.68° East	Database	WellArchitectDB

WELLPATH LOCATION						
	Local coordinates		Grid coordinates		Geographic coordinates	
	North[ft]	East[ft]	Easting[US ft]	Northing[US ft]	Latitude	Longitude
Slot Location	-21.86	-0.00	3292260.07	1369013.44	40.3416000°	-104.4515100°
Facility Reference Pt			3292259.81	1369035.30	40.3416600°	-104.4515100°
Field Reference Pt			3230456.90	1245096.09	40.0032400°	-104.6773400°

WELLPATH DATUM			
Calculation method	Minimum curvature	Ensign 162 (23') (RKB) to Facility Vertical Datum	4647.00ft
Horizontal Reference Pt	Slot	Ensign 162 (23') (RKB) to Mean Sea Level	4647.00ft
Vertical Reference Pt	Ensign 162 (23') (RKB)	Ensign 162 (23') (RKB) to Mud Line at Slot (SLOT#02 SILVERTON 5-1-3L (2584'FNL & 255'FWL,SEC.04))	4647.00ft
MD Reference Pt	Ensign 162 (23') (RKB)	Section Origin	N 0.00, E 0.00 ft
Field Vertical Reference	Mean Sea Level	Section Azimuth	281.61°

REFERENCE WELLPATH IDENTIFICATION			
Operator	CONFLUENCE RESOURCES	Well	SILVERTON 5-1-3L
Field	WELD COUNTY (NAD83, TRUE NORTH)	API/Legal	
Facility	SEC.04-T04N-R63W	Wellbore	SILVERTON 5-1-3L AWB
Slot	SLOT#02 SILVERTON 5-1-3L (2584'FNL & 255'FWL,SEC.04)		

WELLPATH DATA (208 stations) † = interpolated, ‡ = extrapolated station												
MD [ft]	Inclination [°]	Azimuth [°]	TVD [ft]	Vert Sect [ft]	North [ft]	East [ft]	Grid East [US ft]	Grid North [US ft]	Latitude	Longitude	DLS [°/100ft]	Comments
0.00†	0.000	0.000	0.00	0.00	0.00	0.00	3292260.07	1369013.44	40.3416000	-104.4515100	0.00	
23.00	0.000	0.000	23.00	0.00	0.00	0.00	3292260.07	1369013.44	40.3416000	-104.4515100	0.00	
110.50	0.000	0.000	110.50	0.00	0.00	0.00	3292260.07	1369013.44	40.3416000	-104.4515100	0.00	
155.50	0.200	173.000	155.50	-0.03	-0.08	0.01	3292260.08	1369013.37	40.3415998	-104.4515100	0.44	
185.50	0.000	0.000	185.50	-0.04	-0.13	0.02	3292260.08	1369013.31	40.3415996	-104.4515099	0.67	
215.50	0.000	0.000	215.50	-0.04	-0.13	0.02	3292260.08	1369013.31	40.3415996	-104.4515099	0.00	
244.50	0.100	169.500	244.50	-0.05	-0.15	0.02	3292260.09	1369013.29	40.3415996	-104.4515099	0.34	
275.50	0.100	140.900	275.50	-0.08	-0.20	0.04	3292260.11	1369013.24	40.3415994	-104.4515098	0.16	
305.50	0.100	132.400	305.50	-0.13	-0.24	0.08	3292260.15	1369013.20	40.3415993	-104.4515097	0.05	
336.50	0.100	142.300	336.50	-0.17	-0.28	0.11	3292260.18	1369013.17	40.3415992	-104.4515096	0.06	
381.50	0.200	340.700	381.50	-0.16	-0.24	0.11	3292260.18	1369013.21	40.3415993	-104.4515096	0.66	
426.50	1.300	337.600	426.50	0.17	0.31	-0.11	3292259.95	1369013.75	40.3416008	-104.4515104	2.45	
471.50	2.600	345.800	471.47	0.90	1.77	-0.55	3292259.49	1369015.21	40.3416049	-104.4515120	2.95	
515.50	3.900	348.600	515.40	1.92	4.21	-1.09	3292258.92	1369017.64	40.3416115	-104.4515139	2.98	
560.50	5.000	351.500	560.26	3.19	7.64	-1.69	3292258.29	1369021.07	40.3416210	-104.4515160	2.49	
605.50	6.000	352.200	605.05	4.65	11.91	-2.29	3292257.63	1369025.33	40.3416327	-104.4515182	2.23	
649.50	6.800	352.900	648.78	6.25	16.78	-2.93	3292256.94	1369030.19	40.3416461	-104.4515205	1.83	
694.50	7.400	353.000	693.43	8.02	22.30	-3.61	3292256.19	1369035.70	40.3416612	-104.4515230	1.33	
739.50	8.400	353.900	738.00	9.95	28.44	-4.31	3292255.42	1369041.83	40.3416781	-104.4515255	2.24	
784.50	9.400	354.100	782.46	12.06	35.37	-5.04	3292254.61	1369048.75	40.3416971	-104.4515281	2.22	
828.50	10.100	354.400	825.83	14.28	42.78	-5.79	3292253.77	1369056.15	40.3417174	-104.4515308	1.60	
873.50	11.100	355.000	870.06	16.68	51.02	-6.55	3292252.91	1369064.38	40.3417401	-104.4515335	2.24	
918.50	12.100	355.500	914.14	19.23	60.04	-7.30	3292252.06	1369073.39	40.3417648	-104.4515362	2.23	
962.50	12.800	356.400	957.10	21.79	69.50	-7.96	3292251.28	1369082.84	40.3417908	-104.4515386	1.65	
1007.50	13.500	357.300	1000.92	24.40	79.72	-8.52	3292250.60	1369093.06	40.3418188	-104.4515406	1.62	
1048.50	14.200	359.000	1040.73	26.68	89.53	-8.84	3292250.17	1369102.86	40.3418458	-104.4515417	1.97	
1093.50	14.900	0.200	1084.29	29.03	100.84	-8.91	3292249.96	1369114.16	40.3418768	-104.4515420	1.69	
1137.50	15.600	0.100	1126.74	31.33	112.41	-8.88	3292249.85	1369125.74	40.3419086	-104.4515419	1.59	
1182.50	15.800	0.100	1170.06	33.76	124.59	-8.86	3292249.73	1369137.91	40.3419420	-104.4515418	0.44	
1223.50	16.400	359.500	1209.45	36.08	135.96	-8.90	3292249.56	1369149.28	40.3419732	-104.4515419	1.52	

REFERENCE WELLPATH IDENTIFICATION				
Operator	CONFLUENCE RESOURCES		Well	SILVERTON 5-1-3L
Field	WELD COUNTY (NAD83, TRUE NORTH)		API/Legal	
Facility	SEC.04-T04N-R63W		Wellbore	SILVERTON 5-1-3L AWB
Slot	SLOT#02 SILVERTON 5-1-3L (2584'FNL & 255'FWL,SEC.04)			

WELLPATH DATA (208 stations)

MD [ft]	Inclination [°]	Azimuth [°]	TVD [ft]	Vert Sect [ft]	North [ft]	East [ft]	Grid East [US ft]	Grid North [US ft]	Latitude	Longitude	DLS [°/100ft]	Comments
1264.50	17.200	358.100	1248.70	38.71	147.80	-9.16	3292249.16	1369161.12	40.3420057	-104.4515428	2.19	
1308.50	17.700	357.300	1290.68	41.89	160.99	-9.69	3292248.48	1369174.30	40.3420419	-104.4515447	1.26	
1353.50	18.200	357.300	1333.49	45.32	174.84	-10.34	3292247.66	1369188.14	40.3420799	-104.4515471	1.11	
1398.50	18.600	357.100	1376.19	48.85	189.03	-11.03	3292246.80	1369202.32	40.3421189	-104.4515496	0.90	
1443.50	19.300	356.900	1418.75	52.54	203.62	-11.80	3292245.86	1369216.90	40.3421589	-104.4515523	1.56	
1484.50	18.900	357.100	1457.49	55.92	217.02	-12.50	3292245.00	1369230.29	40.3421957	-104.4515548	0.99	
1529.50	18.600	356.600	1500.10	59.61	231.46	-13.30	3292244.04	1369244.72	40.3422353	-104.4515577	0.76	TIE TO 3RD PARTY SURFACE SURVEYS
1611.00	18.550	356.000	1577.36	66.46	257.37	-14.97	3292242.05	1369270.60	40.3423065	-104.4515637	0.24	FIRST BH MWD SURVEY
1701.00	18.650	357.020	1662.65	73.94	286.02	-16.72	3292239.97	1369299.23	40.3423851	-104.4515700	0.38	
1790.00	18.360	2.510	1747.06	79.74	314.24	-16.84	3292239.51	1369327.45	40.3424626	-104.4515704	1.98	
1880.00	17.750	6.570	1832.63	83.19	342.03	-14.65	3292241.37	1369355.26	40.3425388	-104.4515626	1.55	
1969.00	17.830	10.410	1917.38	84.67	368.91	-10.64	3292245.07	1369382.18	40.3426126	-104.4515482	1.32	
2059.00	17.940	9.760	2003.03	85.40	396.12	-5.80	3292249.58	1369409.45	40.3426873	-104.4515308	0.25	
2149.00	17.690	9.440	2088.71	86.37	423.27	-1.21	3292253.86	1369436.65	40.3427618	-104.4515143	0.30	
2238.00	17.740	10.430	2173.49	87.16	449.94	3.47	3292258.21	1369463.38	40.3428351	-104.4514976	0.34	
2328.00	17.710	10.440	2259.22	87.72	476.89	8.43	3292262.86	1369490.38	40.3429090	-104.4514798	0.03	
2417.00	17.840	10.650	2343.97	88.23	503.60	13.40	3292267.51	1369517.15	40.3429823	-104.4514619	0.16	
2506.00	17.780	10.970	2428.71	88.61	530.34	18.51	3292272.30	1369543.94	40.3430557	-104.4514436	0.13	
2595.00	19.420	9.460	2513.06	89.31	558.28	23.52	3292276.99	1369571.93	40.3431324	-104.4514256	1.92	
2684.00	21.830	5.340	2596.35	91.68	589.35	27.50	3292280.59	1369603.05	40.3432177	-104.4514114	3.16	
2774.00	21.850	356.630	2679.91	97.84	622.74	28.07	3292280.77	1369636.45	40.3433094	-104.4514093	3.60	
2863.00	21.400	353.860	2762.65	107.07	655.42	25.36	3292277.67	1369669.09	40.3433991	-104.4514190	1.25	
2953.00	21.050	355.610	2846.55	116.53	687.86	22.37	3292274.30	1369701.49	40.3434881	-104.4514298	0.80	
3043.00	20.520	352.290	2930.69	126.20	719.61	19.01	3292270.57	1369733.20	40.3435753	-104.4514418	1.44	
3133.00	20.830	356.140	3014.90	135.69	751.21	15.82	3292267.00	1369764.75	40.3436620	-104.4514532	1.55	
3222.00	21.100	354.490	3098.01	144.63	782.94	13.22	3292264.02	1369796.45	40.3437491	-104.4514626	0.73	
3311.00	20.740	355.250	3181.14	153.78	814.59	10.37	3292260.81	1369828.07	40.3438360	-104.4514728	0.51	
3401.00	20.560	354.820	3265.36	162.84	846.21	7.63	3292257.69	1369859.65	40.3439228	-104.4514826	0.26	
3491.00	21.330	354.670	3349.41	172.17	878.25	4.68	3292254.36	1369891.65	40.3440107	-104.4514932	0.86	
3580.00	22.230	354.770	3432.06	181.77	911.13	1.64	3292250.93	1369924.49	40.3441010	-104.4515041	1.01	

REFERENCE WELLPATH IDENTIFICATION				
Operator	CONFLUENCE RESOURCES		Well	SILVERTON 5-1-3L
Field	WELD COUNTY (NAD83, TRUE NORTH)		API/Legal	
Facility	SEC.04-T04N-R63W		Wellbore	SILVERTON 5-1-3L AWB
Slot	SLOT#02 SILVERTON 5-1-3L (2584'FNL & 255'FWL,SEC.04)			

WELLPATH DATA (208 stations)

MD [ft]	Inclination [°]	Azimuth [°]	TVD [ft]	Vert Sect [ft]	North [ft]	East [ft]	Grid East [US ft]	Grid North [US ft]	Latitude	Longitude	DLS [°/100ft]	Comments
3670.00	21.320	354.040	3515.63	191.64	944.36	-1.61	3292247.29	1369957.68	40.3441922	-104.4515158	1.05	
3760.00	21.590	351.470	3599.40	202.28	977.01	-5.77	3292242.75	1369990.27	40.3442818	-104.4515307	1.09	
3849.00	21.590	354.320	3682.16	212.78	1009.50	-9.81	3292238.32	1370022.71	40.3443710	-104.4515452	1.18	
3939.00	21.200	355.290	3765.96	222.28	1042.19	-12.79	3292234.96	1370055.37	40.3444607	-104.4515559	0.59	
4028.00	20.990	354.940	3848.99	231.37	1074.11	-15.52	3292231.85	1370087.25	40.3445483	-104.4515657	0.28	
4117.00	20.320	354.800	3932.27	240.41	1105.38	-18.32	3292228.68	1370118.48	40.3446342	-104.4515757	0.75	
4207.00	21.080	354.300	4016.46	249.75	1137.04	-21.35	3292225.28	1370150.11	40.3447211	-104.4515866	0.87	
4296.00	21.000	355.200	4099.53	259.02	1168.86	-24.27	3292221.98	1370181.89	40.3448084	-104.4515971	0.37	
4385.00	20.930	357.230	4182.64	267.47	1200.63	-26.37	3292219.50	1370213.63	40.3448956	-104.4516046	0.82	
4475.00	20.330	356.770	4266.86	275.47	1232.30	-28.03	3292217.47	1370245.27	40.3449826	-104.4516106	0.69	
4565.00	20.410	357.210	4351.24	283.38	1263.58	-29.68	3292215.45	1370276.53	40.3450684	-104.4516165	0.19	
4654.00	20.990	356.350	4434.49	291.43	1294.99	-31.45	3292213.31	1370307.91	40.3451547	-104.4516228	0.74	
4744.00	21.580	356.720	4518.35	299.93	1327.60	-33.42	3292210.95	1370340.50	40.3452442	-104.4516299	0.67	
4833.00	21.530	356.250	4601.13	308.46	1360.24	-35.42	3292208.56	1370373.11	40.3453337	-104.4516371	0.20	
4922.00	21.520	356.210	4683.92	317.12	1392.82	-37.57	3292206.03	1370405.66	40.3454232	-104.4516448	0.02	
5012.00	21.250	355.300	4767.72	326.08	1425.55	-40.00	3292203.22	1370438.36	40.3455130	-104.4516535	0.48	
5101.00	21.490	353.860	4850.60	335.58	1457.83	-43.06	3292199.77	1370470.60	40.3456016	-104.4516645	0.65	
5190.00	21.020	358.140	4933.56	344.27	1489.99	-45.33	3292197.13	1370502.73	40.3456899	-104.4516726	1.82	
5280.00	20.650	358.590	5017.67	351.61	1521.99	-46.24	3292195.84	1370534.72	40.3457778	-104.4516759	0.45	
5369.00	21.100	359.460	5100.83	358.52	1553.70	-46.78	3292194.92	1370566.41	40.3458648	-104.4516778	0.61	
5459.00	21.180	358.450	5184.77	365.63	1586.15	-47.37	3292193.95	1370598.85	40.3459539	-104.4516799	0.41	
5548.00	21.530	357.960	5267.66	373.14	1618.54	-48.39	3292192.55	1370631.23	40.3460428	-104.4516836	0.44	
5638.00	21.460	358.490	5351.40	380.78	1651.51	-49.41	3292191.14	1370664.18	40.3461333	-104.4516873	0.23	
5727.00	21.730	357.800	5434.15	388.40	1684.24	-50.47	3292189.69	1370696.90	40.3462231	-104.4516911	0.42	
5817.00	21.660	357.880	5517.78	396.32	1717.49	-51.72	3292188.04	1370730.13	40.3463144	-104.4516956	0.08	
5906.00	21.680	358.400	5600.49	403.98	1750.34	-52.79	3292186.59	1370762.96	40.3464045	-104.4516994	0.22	
5996.00	21.580	357.940	5684.15	411.69	1783.49	-53.85	3292185.14	1370796.10	40.3464956	-104.4517032	0.22	
6085.00	21.470	357.460	5766.94	419.54	1816.12	-55.16	3292183.44	1370828.71	40.3465851	-104.4517079	0.23	
6174.00	21.800	357.440	5849.67	427.57	1848.90	-56.62	3292181.59	1370861.47	40.3466751	-104.4517131	0.37	
6264.00	21.730	348.110	5933.28	438.31	1881.91	-60.80	3292177.02	1370894.42	40.3467657	-104.4517281	3.84	

REFERENCE WELLPATH IDENTIFICATION			
Operator	CONFLUENCE RESOURCES	Well	SILVERTON 5-1-3L
Field	WELD COUNTY (NAD83, TRUE NORTH)	API/Legal	
Facility	SEC.04-T04N-R63W	Wellbore	SILVERTON 5-1-3L AWB
Slot	SLOT#02 SILVERTON 5-1-3L (2584'FNL & 255'FWL,SEC.04)		

WELLPATH DATA (208 stations)

MD [ft]	Inclination [°]	Azimuth [°]	TVD [ft]	Vert Sect [ft]	North [ft]	East [ft]	Grid East [US ft]	Grid North [US ft]	Latitude	Longitude	DLS [°/100ft]	Comments
6353.00	23.070	320.300	6015.80	458.54	1911.53	-75.37	3292162.10	1370923.87	40.3468470	-104.4517804	11.90	
6442.00	29.720	304.610	6095.57	492.54	1937.54	-104.74	3292132.43	1370949.53	40.3469184	-104.4518858	10.77	
6532.00	37.310	305.090	6170.55	538.16	1965.93	-145.48	3292091.36	1370977.44	40.3469963	-104.4520319	8.44	
6621.00	45.290	300.380	6237.38	592.95	1997.49	-194.92	3292041.55	1371008.41	40.3470830	-104.4522093	9.62	
6710.00	52.870	293.460	6295.67	657.75	2027.68	-254.88	3291981.24	1371037.88	40.3471658	-104.4524244	10.34	
6800.00	53.930	286.650	6349.37	729.15	2052.40	-322.69	3291913.14	1371061.80	40.3472337	-104.4526677	6.19	
6889.00	58.890	277.980	6398.66	803.15	2068.03	-395.03	3291840.63	1371076.56	40.3472766	-104.4529272	9.84	
6979.00	67.880	271.260	6438.98	882.85	2074.31	-475.10	3291760.50	1371081.90	40.3472938	-104.4532144	12.01	
7068.00	79.360	270.810	6464.03	966.64	2075.84	-560.33	3291675.26	1371082.42	40.3472980	-104.4535202	12.91	
7158.00	85.930	273.790	6475.55	1054.67	2079.44	-649.46	3291586.10	1371084.97	40.3473079	-104.4538400	8.00	
7248.00	88.550	281.300	6479.89	1144.27	2091.24	-738.50	3291496.92	1371095.71	40.3473403	-104.4541594	8.83	
7337.00	89.080	277.040	6481.73	1233.15	2105.41	-826.32	3291408.94	1371108.85	40.3473792	-104.4544745	4.82	
7427.00	88.920	269.960	6483.30	1322.18	2110.90	-916.08	3291319.13	1371113.28	40.3473942	-104.4547965	7.87	
7517.00	88.980	268.740	6484.95	1410.11	2109.88	-1006.06	3291229.17	1371111.19	40.3473914	-104.4551193	1.36	
7606.00	89.110	267.880	6486.44	1496.71	2107.26	-1095.01	3291140.27	1371107.52	40.3473842	-104.4554384	0.98	
7695.00	89.020	268.020	6487.89	1583.18	2104.08	-1183.94	3291051.38	1371103.28	40.3473755	-104.4557575	0.19	
7785.00	88.950	268.100	6489.48	1670.66	2101.03	-1273.88	3290961.49	1371099.17	40.3473671	-104.4560801	0.12	
7875.00	89.020	268.170	6491.08	1758.17	2098.10	-1363.81	3290871.60	1371095.18	40.3473590	-104.4564028	0.11	
7964.00	88.950	268.020	6492.65	1844.69	2095.14	-1452.75	3290782.71	1371091.17	40.3473509	-104.4567219	0.19	
8053.00	88.830	268.230	6494.38	1931.22	2092.23	-1541.69	3290693.82	1371087.21	40.3473429	-104.4570409	0.27	
8143.00	89.020	268.510	6496.07	2018.81	2089.67	-1631.63	3290603.91	1371083.59	40.3473358	-104.4573636	0.38	
8232.00	88.770	268.490	6497.78	2105.48	2087.34	-1720.59	3290515.00	1371080.21	40.3473294	-104.4576828	0.28	
8321.00	89.050	268.410	6499.48	2192.12	2084.94	-1809.54	3290426.08	1371076.75	40.3473228	-104.4580019	0.33	
8411.00	88.710	267.950	6501.24	2279.64	2082.08	-1899.47	3290336.19	1371072.83	40.3473149	-104.4583245	0.64	
8500.00	88.430	267.690	6503.46	2366.05	2078.69	-1988.38	3290247.33	1371068.39	40.3473056	-104.4586435	0.43	
8590.00	88.400	268.260	6505.95	2453.48	2075.51	-2078.29	3290157.47	1371064.15	40.3472969	-104.4589660	0.63	
8679.00	89.420	269.690	6507.64	2540.31	2073.92	-2167.26	3290068.53	1371061.51	40.3472925	-104.4592852	1.97	
8768.00	89.170	270.320	6508.73	2627.48	2073.93	-2256.25	3289979.55	1371060.46	40.3472925	-104.4596045	0.76	
8858.00	89.260	270.210	6509.97	2715.71	2074.35	-2346.24	3289889.57	1371059.82	40.3472936	-104.4599273	0.16	
8947.00	89.080	269.470	6511.26	2802.83	2074.10	-2435.23	3289800.59	1371058.51	40.3472929	-104.4602466	0.86	

REFERENCE WELLPATH IDENTIFICATION

Operator	CONFLUENCE RESOURCES	Well	SILVERTON 5-1-3L
Field	WELD COUNTY (NAD83, TRUE NORTH)	API/Legal	
Facility	SEC.04-T04N-R63W	Wellbore	SILVERTON 5-1-3L AWB
Slot	SLOT#02 SILVERTON 5-1-3L (2584'FNL & 255'FWL,SEC.04)		

WELLPATH DATA (208 stations)

MD [ft]	Inclination [°]	Azimuth [°]	TVD [ft]	Vert Sect [ft]	North [ft]	East [ft]	Grid East [US ft]	Grid North [US ft]	Latitude	Longitude	DLS ["/100ft]	Comments
9036.00	89.200	270.550	6512.59	2890.00	2074.11	-2524.22	3289711.61	1371057.48	40.3472929	-104.4605658	1.22	
9125.00	89.420	270.980	6513.66	2977.41	2075.30	-2613.20	3289622.62	1371057.61	40.3472962	-104.4608851	0.54	
9215.00	89.290	270.700	6514.68	3065.81	2076.62	-2703.19	3289532.63	1371057.87	40.3472998	-104.4612079	0.34	
9305.00	88.860	270.160	6516.13	3154.09	2077.30	-2793.17	3289442.65	1371057.48	40.3473016	-104.4615307	0.77	
9394.00	89.110	270.340	6517.71	3241.34	2077.69	-2882.16	3289353.67	1371056.82	40.3473026	-104.4618500	0.35	
9484.00	88.890	270.470	6519.28	3329.61	2078.32	-2972.14	3289263.69	1371056.39	40.3473043	-104.4621728	0.28	
9573.00	88.860	270.070	6521.02	3416.85	2078.74	-3061.13	3289174.71	1371055.76	40.3473055	-104.4624920	0.45	
9662.00	88.950	269.980	6522.73	3504.02	2078.78	-3150.11	3289085.74	1371054.74	40.3473055	-104.4628113	0.14	
9752.00	88.650	269.820	6524.61	3592.13	2078.62	-3240.09	3288995.77	1371053.52	40.3473051	-104.4631341	0.38	
9841.00	88.740	270.440	6526.64	3679.33	2078.82	-3329.07	3288906.80	1371052.67	40.3473056	-104.4634533	0.70	
9931.00	88.580	270.400	6528.74	3767.59	2079.48	-3419.04	3288816.83	1371052.27	40.3473074	-104.4637761	0.18	
10020.00	89.910	270.930	6529.91	3854.96	2080.52	-3508.02	3288727.84	1371052.25	40.3473102	-104.4640953	1.61	
10109.00	89.970	270.840	6530.01	3942.41	2081.89	-3597.01	3288638.85	1371052.57	40.3473139	-104.4644146	0.12	
10198.00	91.110	270.850	6529.17	4029.84	2083.20	-3686.00	3288549.86	1371052.83	40.3473175	-104.4647338	1.28	
10287.00	91.450	271.010	6527.18	4117.27	2084.65	-3774.96	3288460.89	1371053.22	40.3473214	-104.4650530	0.42	
10377.00	91.320	270.230	6525.01	4205.59	2085.62	-3864.93	3288370.92	1371053.13	40.3473240	-104.4653758	0.88	
10466.00	90.830	270.030	6523.34	4292.80	2085.82	-3953.91	3288281.94	1371052.28	40.3473246	-104.4656950	0.59	
10555.00	90.890	269.560	6522.00	4379.90	2085.51	-4042.90	3288192.97	1371050.91	40.3473236	-104.4660143	0.53	
10644.00	91.110	269.730	6520.45	4466.96	2084.95	-4131.89	3288104.00	1371049.31	40.3473221	-104.4663335	0.31	
10734.00	91.200	269.470	6518.63	4554.97	2084.33	-4221.87	3288014.04	1371047.62	40.3473203	-104.4666563	0.31	
10823.00	91.170	269.620	6516.79	4641.98	2083.62	-4310.84	3287925.08	1371045.86	40.3473183	-104.4669755	0.17	
10913.00	90.400	269.120	6515.56	4729.93	2082.63	-4400.83	3287835.11	1371043.80	40.3473156	-104.4672984	1.02	
11002.00	89.970	269.720	6515.27	4816.92	2081.73	-4489.82	3287746.14	1371041.85	40.3473131	-104.4676176	0.83	
11091.00	88.520	269.440	6516.44	4903.95	2081.08	-4578.81	3287657.17	1371040.15	40.3473112	-104.4679369	1.66	
11181.00	88.770	269.690	6518.57	4991.95	2080.39	-4668.78	3287567.22	1371038.40	40.3473093	-104.4682597	0.39	
11270.00	87.480	269.400	6521.48	5078.93	2079.69	-4757.73	3287478.29	1371036.64	40.3473073	-104.4685788	1.49	
11359.00	88.030	269.830	6524.97	5165.92	2079.09	-4846.66	3287389.38	1371034.99	40.3473056	-104.4688978	0.78	
11449.00	87.600	269.290	6528.40	5253.88	2078.40	-4936.59	3287299.46	1371033.24	40.3473037	-104.4692204	0.77	
11539.00	87.850	269.700	6531.98	5341.80	2077.61	-5026.52	3287209.56	1371031.38	40.3473015	-104.4695431	0.53	
11628.00	87.290	268.810	6535.75	5428.66	2076.45	-5115.43	3287120.67	1371029.18	40.3472982	-104.4698620	1.18	

REFERENCE WELLPATH IDENTIFICATION				
Operator	CONFLUENCE RESOURCES		Well	SILVERTON 5-1-3L
Field	WELD COUNTY (NAD83, TRUE NORTH)		API/Legal	
Facility	SEC.04-T04N-R63W		Wellbore	SILVERTON 5-1-3L AWB
Slot	SLOT#02 SILVERTON 5-1-3L (2584'FNL & 255'FWL,SEC.04)			

WELLPATH DATA (208 stations)

MD [ft]	Inclination [°]	Azimuth [°]	TVD [ft]	Vert Sect [ft]	North [ft]	East [ft]	Grid East [US ft]	Grid North [US ft]	Latitude	Longitude	DLS [°/100ft]	Comments
11718.00	87.570	269.380	6539.78	5516.43	2075.03	-5205.33	3287030.80	1371026.69	40.3472943	-104.4701845	0.71	
11807.00	87.540	269.540	6543.58	5603.36	2074.19	-5294.24	3286941.90	1371024.81	40.3472919	-104.4705035	0.18	
11896.00	87.510	270.430	6547.42	5690.45	2074.17	-5383.16	3286853.00	1371023.73	40.3472918	-104.4708225	1.00	
11986.00	87.540	270.260	6551.31	5778.64	2074.71	-5473.07	3286763.09	1371023.21	40.3472933	-104.4711451	0.19	
12075.00	87.420	270.060	6555.22	5865.78	2074.96	-5561.99	3286674.18	1371022.41	40.3472939	-104.4714641	0.26	
12165.00	87.510	270.360	6559.20	5953.92	2075.29	-5651.90	3286584.28	1371021.67	40.3472947	-104.4717867	0.35	
12254.00	88.280	270.240	6562.47	6041.13	2075.75	-5740.83	3286495.34	1371021.09	40.3472960	-104.4721057	0.88	
12344.00	88.150	269.790	6565.28	6129.25	2075.78	-5830.79	3286405.40	1371020.05	40.3472960	-104.4724285	0.52	
12433.00	89.200	270.630	6567.34	6216.47	2076.10	-5919.76	3286316.43	1371019.32	40.3472968	-104.4727477	1.51	
12523.00	89.080	270.200	6568.69	6304.75	2076.76	-6009.75	3286226.44	1371018.91	40.3472985	-104.4730705	0.50	
12613.00	89.020	270.220	6570.18	6392.96	2077.09	-6099.74	3286136.46	1371018.17	40.3472994	-104.4733933	0.07	
12703.00	88.770	269.880	6571.91	6481.12	2077.16	-6189.72	3286046.49	1371017.19	40.3472995	-104.4737161	0.47	
12792.00	88.950	270.380	6573.68	6568.32	2077.37	-6278.70	3285957.52	1371016.34	40.3473000	-104.4740354	0.60	
12881.00	88.890	270.170	6575.36	6655.57	2077.79	-6367.69	3285868.54	1371015.71	40.3473011	-104.4743546	0.25	
12971.00	88.800	270.180	6577.18	6743.76	2078.07	-6457.67	3285778.56	1371014.92	40.3473018	-104.4746774	0.10	
13061.00	89.350	270.600	6578.63	6832.03	2078.68	-6547.65	3285688.58	1371014.47	40.3473034	-104.4750003	0.77	
13150.00	88.400	269.570	6580.38	6919.21	2078.81	-6636.63	3285599.61	1371013.55	40.3473037	-104.4753195	1.57	
13240.00	89.260	270.630	6582.21	7007.38	2078.97	-6726.61	3285509.64	1371012.65	40.3473041	-104.4756423	1.52	
13329.00	89.110	270.670	6583.48	7094.75	2079.98	-6815.60	3285420.65	1371012.60	40.3473068	-104.4759615	0.17	
13419.00	89.170	270.650	6584.83	7183.10	2081.02	-6905.58	3285330.67	1371012.58	40.3473096	-104.4762844	0.07	
13509.00	89.170	270.710	6586.13	7271.46	2082.08	-6995.57	3285240.68	1371012.58	40.3473124	-104.4766072	0.07	
13599.00	89.050	270.850	6587.53	7359.85	2083.31	-7085.55	3285150.69	1371012.74	40.3473157	-104.4769300	0.20	
13688.00	89.140	270.750	6588.94	7447.26	2084.55	-7174.53	3285061.71	1371012.93	40.3473191	-104.4772492	0.15	
13778.00	89.110	270.750	6590.31	7535.63	2085.73	-7264.51	3284971.72	1371013.05	40.3473222	-104.4775720	0.03	
13868.00	89.050	270.750	6591.76	7624.01	2086.91	-7354.49	3284881.74	1371013.16	40.3473254	-104.4778949	0.07	
13957.00	88.980	269.670	6593.29	7711.24	2087.23	-7443.47	3284792.76	1371012.43	40.3473262	-104.4782141	1.22	
14046.00	89.230	269.910	6594.68	7798.34	2086.91	-7532.46	3284703.79	1371011.06	40.3473253	-104.4785334	0.39	
14136.00	89.170	269.850	6595.93	7886.45	2086.72	-7622.45	3284613.81	1371009.80	40.3473247	-104.4788562	0.09	
14226.00	89.260	270.230	6597.17	7974.62	2086.78	-7712.45	3284523.83	1371008.80	40.3473248	-104.4791791	0.43	
14316.00	89.290	270.060	6598.31	8062.81	2087.01	-7802.44	3284433.84	1371007.97	40.3473253	-104.4795019	0.19	

REFERENCE WELLPATH IDENTIFICATION				
Operator	CONFLUENCE RESOURCES		Well	SILVERTON 5-1-3L
Field	WELD COUNTY (NAD83, TRUE NORTH)		API/Legal	
Facility	SEC.04-T04N-R63W		Wellbore	SILVERTON 5-1-3L AWB
Slot	SLOT#02 SILVERTON 5-1-3L (2584'FNL & 255'FWL,SEC.04)			

WELLPATH DATA (208 stations) † = interpolated, ‡ = extrapolated station												
MD [ft]	Inclination [°]	Azimuth [°]	TVD [ft]	Vert Sect [ft]	North [ft]	East [ft]	Grid East [US ft]	Grid North [US ft]	Latitude	Longitude	DLS [°/100ft]	Comments
14406.00	89.350	269.880	6599.37	8150.96	2086.96	-7892.43	3284343.86	1371006.85	40.3473251	-104.4798248	0.21	
14496.00	89.200	269.450	6600.51	8239.00	2086.44	-7982.42	3284253.88	1371005.26	40.3473236	-104.4801476	0.51	
14585.00	89.020	269.420	6601.90	8325.99	2085.56	-8071.41	3284164.92	1371003.34	40.3473211	-104.4804669	0.21	
14674.00	88.770	269.250	6603.61	8412.94	2084.53	-8160.38	3284075.96	1371001.25	40.3473182	-104.4807861	0.34	
14764.00	89.540	270.570	6604.94	8501.05	2084.38	-8250.37	3283985.99	1371000.05	40.3473177	-104.4811089	1.70	
14854.00	88.620	269.120	6606.38	8589.15	2084.14	-8340.36	3283896.02	1370998.74	40.3473169	-104.4814317	1.91	
14944.00	89.320	270.120	6608.00	8677.17	2083.54	-8430.34	3283806.05	1370997.08	40.3473152	-104.4817546	1.36	
15033.00	89.020	269.420	6609.29	8764.27	2083.19	-8519.33	3283717.08	1370995.67	40.3473142	-104.4820738	0.86	
15122.00	89.850	270.240	6610.17	8851.39	2082.92	-8608.32	3283628.10	1370994.35	40.3473134	-104.4823931	1.31	
15212.00	89.940	270.460	6610.33	8939.65	2083.47	-8698.32	3283538.10	1370993.84	40.3473148	-104.4827160	0.26	
15301.00	89.660	270.030	6610.65	9026.91	2083.85	-8787.32	3283449.11	1370993.17	40.3473157	-104.4830353	0.58	
15391.00	89.570	269.810	6611.25	9115.04	2083.73	-8877.32	3283359.12	1370991.98	40.3473153	-104.4833581	0.26	
15481.00	89.880	270.470	6611.68	9203.24	2083.95	-8967.31	3283269.13	1370991.13	40.3473158	-104.4836810	0.81	
15571.00	89.510	269.520	6612.16	9291.39	2083.94	-9057.31	3283179.15	1370990.06	40.3473157	-104.4840039	1.13	
15661.00	89.540	269.510	6612.91	9379.39	2083.18	-9147.31	3283089.17	1370988.23	40.3473135	-104.4843267	0.04	
15751.00	89.320	269.160	6613.80	9467.33	2082.13	-9237.29	3282999.21	1370986.13	40.3473106	-104.4846496	0.46	
15840.00	89.600	269.830	6614.64	9554.34	2081.35	-9326.29	3282910.23	1370984.29	40.3473083	-104.4849688	0.82	
15930.00	88.950	269.830	6615.78	9642.44	2081.08	-9416.28	3282820.25	1370982.96	40.3473075	-104.4852917	0.72	
16019.00	88.030	269.350	6618.13	9729.46	2080.45	-9505.24	3282731.31	1370981.27	40.3473057	-104.4856109	1.17	
16108.00	88.090	269.100	6621.14	9816.34	2079.24	-9594.18	3282642.39	1370979.02	40.3473023	-104.4859299	0.29	
16198.00	88.000	270.490	6624.21	9904.38	2078.92	-9684.13	3282552.46	1370977.63	40.3473013	-104.4862526	1.55	
16288.00	88.400	270.630	6627.04	9992.66	2079.80	-9774.08	3282462.51	1370977.45	40.3473036	-104.4865753	0.47	
16377.00	88.180	270.520	6629.69	10079.98	2080.69	-9863.04	3282373.55	1370977.29	40.3473059	-104.4868945	0.28	
16467.00	88.250	270.760	6632.49	10168.29	2081.70	-9952.99	3282283.60	1370977.23	40.3473086	-104.4872172	0.28	
16557.00	88.250	270.980	6635.24	10256.67	2083.06	-10042.93	3282193.65	1370977.53	40.3473123	-104.4875399	0.24	
16646.00	88.220	270.670	6637.98	10344.06	2084.34	-10131.88	3282104.69	1370977.76	40.3473157	-104.4878590	0.35	
16677.00	88.370	270.770	6638.91	10374.49	2084.73	-10162.87	3282073.71	1370977.78	40.3473167	-104.4879702	0.58	LAST BH MWD SURVEY
16701.00†	88.370	270.770	6639.59	10398.05	2085.06	-10186.86	3282049.72	1370977.82	40.3473176	-104.4880562	0.00	PROJECTION TO BIT

REFERENCE WELLPATH IDENTIFICATION

Operator	CONFLUENCE RESOURCES	Well	SILVERTON 5-1-3L
Field	WELD COUNTY (NAD83, TRUE NORTH)	API/Legal	
Facility	SEC.04-T04N-R63W	Wellbore	SILVERTON 5-1-3L AWB
Slot	SLOT#02 SILVERTON 5-1-3L (2584'FNL & 255'FWL,SEC.04)		

TARGETS

Name	TVD [ft]	North [ft]	East [ft]	Grid East [US ft]	Grid North [US ft]	Latitude	Longitude	Shape
SEC.04-T04N-R63W	-3.00	21.86	0.00	3292259.81	1369035.30	40.3416600	-104.4515100	polygon
	2D Polygon: dimensions not calculated							
SEC.05&06-T04N-R63W HARDLINES 470'N/S & 470'E/W	-3.00	21.86	0.00	3292259.81	1369035.30	40.3416600	-104.4515100	polygon
	2D Polygon: dimensions not calculated							
SEC.05-T04N-R63W	-3.00	21.86	0.00	3292259.81	1369035.30	40.3416600	-104.4515100	polygon
	2D Polygon: dimensions not calculated							
SEC.06-T04N-R63W	-3.00	21.86	0.00	3292259.81	1369035.30	40.3416600	-104.4515100	polygon
	2D Polygon: dimensions not calculated							
SILVERTON 5-1-3L LP REV-1(490'FNL & 470'FEL,SEC.05)	6480.00	2091.14	-688.49	3291546.94	1371096.21	40.3473400	-104.4539800	point
SILVERTON 5-1-3L BHL REV-1 (490'FNL & 405'FWL,SEC.06)	6638.00	2093.23	-10187.91	3282048.57	1370985.98	40.3473400	-104.4880600	point

WELLPATH COMPOSITION - Ref Wellbore: SILVERTON 5-1-3L AWB Ref Wellpath: SILVERTON 5-1-3L AWP

Start MD [ft]	End MD [ft]	Positional Uncertainty Model	Log Name/Comment	Wellbore	Survey Date
23.00	1529.50	OWSG MWD rev2 - Standard	OWSG MWD rev2 - Standard <110.5 - 1529.5>	SILVERTON 5-1-3L AWB	9/30/2020
1529.50	16701.00	BH AutoTrak Curve/eXpress (2019) (Short spacing)	BH AutoTrak Curve (2019) (Short spacing) <1611 - 16677>	SILVERTON 5-1-3L AWB	11/19/2020

REFERENCE WELLPATH IDENTIFICATION

Operator	CONFLUENCE RESOURCES	Well	SILVERTON 5-1-3L
Field	WELD COUNTY (NAD83, TRUE NORTH)	API/Legal	
Facility	SEC.04-T04N-R63W	Wellbore	SILVERTON 5-1-3L AWB
Slot	SLOT#02 SILVERTON 5-1-3L (2584'FNL & 255'FWL,SEC.04)		

WELLPATH COMMENTS

MD [ft]	Inclination [°]	Azimuth [°]	TVD [ft]	Comment
1529.50	18.600	356.600	1500.10	TIE TO 3RD PARTY SURFACE SURVEYS
1611.00	18.550	356.000	1577.36	FIRST BH MWD SURVEY
16677.00	88.370	270.770	6638.91	LAST BH MWD SURVEY
16701.00	88.370	270.770	6639.59	PROJECTION TO BIT