

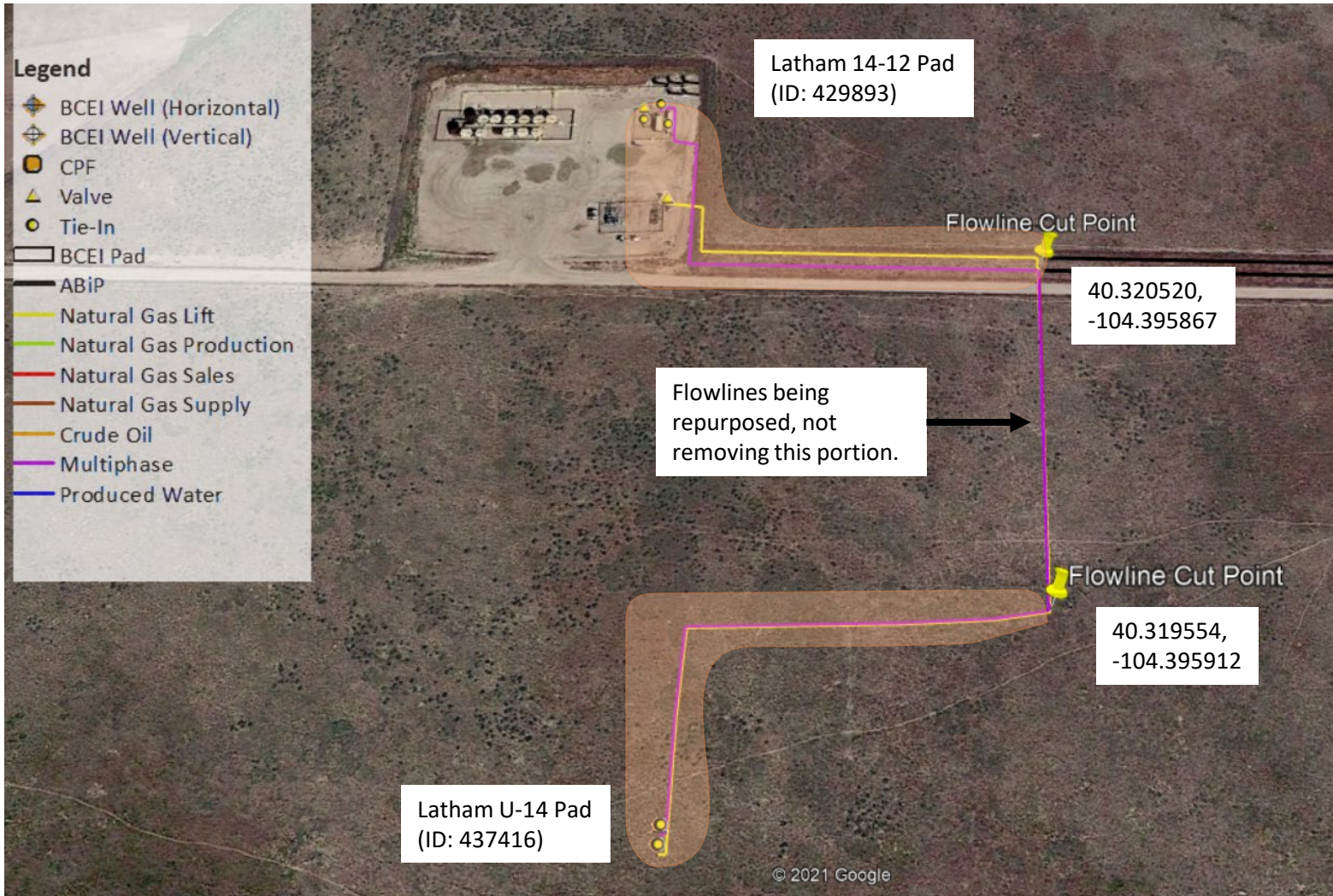
# Latham U-14 Facility - Partial Flowline Removal

SE ¼ SE ¼ Sec. 11, T4N,R63W, 6<sup>th</sup> PM

Weld County, Colorado



Areas of Flowlines to be removed

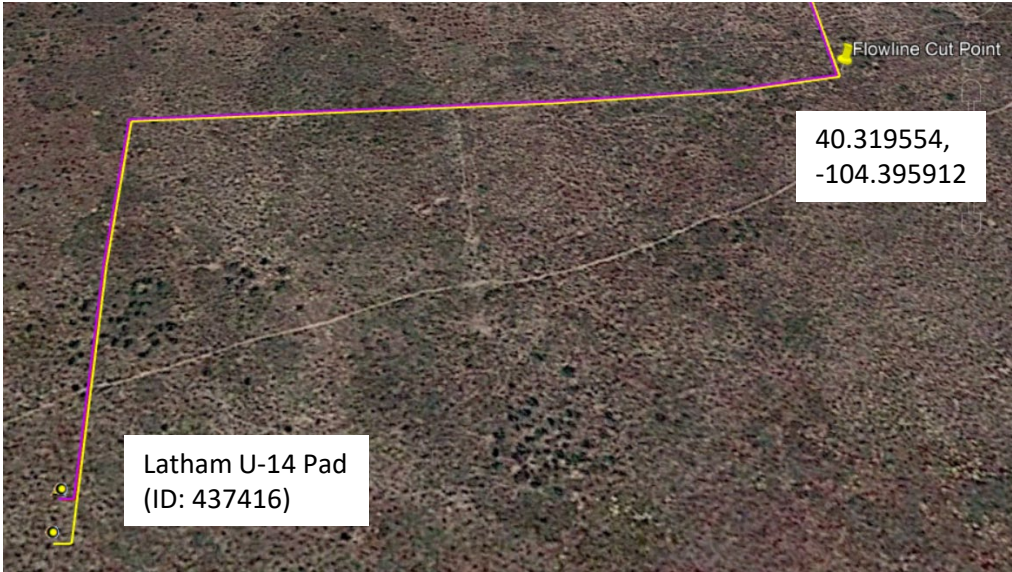




# Latham U-14 Facility - Partial Flowline Removal

SE ¼ SE ¼ Sec. 11, T4N,R63W, 6<sup>th</sup> PM  
Weld County, Colorado

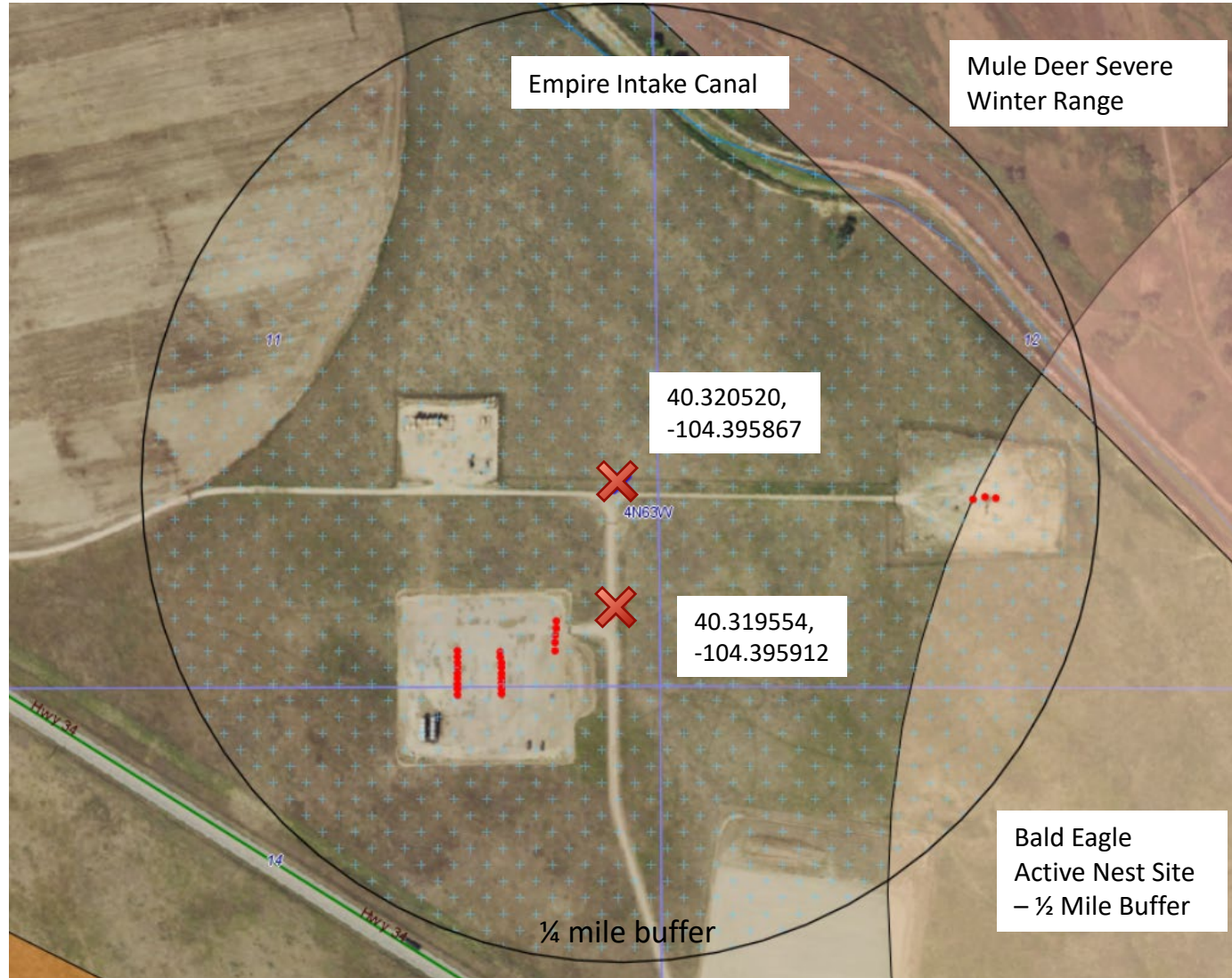
Flowline Unique OperFeatID	Line Type	Start Location	Start Location Latitude	Start Location Longitude	End Location Latitude (Cut Point)	End Location Longitude (Cut Point)	Approx. length to be removed
Latham F11-J14-14HNB/3/WH Line	Multi-Phase	Loc ID 429893	40.321037	-104.397197	40.320520	-104.395867	~550-ft
Latham F11-J14-14HNB/2/GL Line	Gas Lift	Loc ID 429893	40.320721	-104.397159	40.320520	-104.395867	~400-ft
Latham F11-J14-14HNB/3/WH Line	Multi-Phase	Loc ID 437416	40.319036	-104.397068	40.319554	-104.395912	~480-ft
Latham F11-J14-14HNB/2/GL Line	Gas Lift	Loc ID 437416	40.318999	-104.397075	40.319554	-104.395912	~500-ft
Latham F11-J14-14HNB/2/SG Line	Natural Gas Sales	Loc ID 437416	40.319036	-104.397068	40.319554	-104.395912	~480-ft



# Latham U-14 Facility - Partial Flowline Removal

SE ¼ SE ¼ Sec. 11, T4N,R63W, 6<sup>th</sup> PM

Weld County, Colorado



 Flowline Cut Points