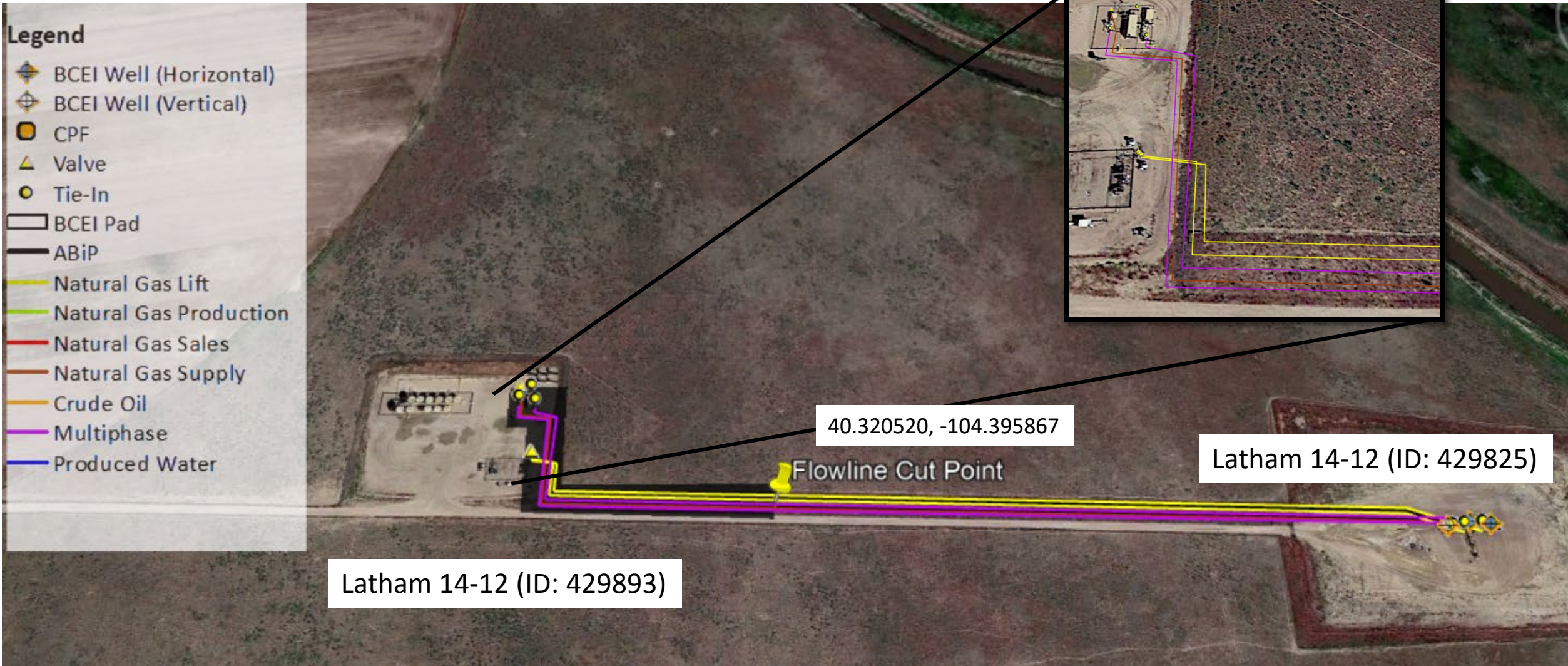


# Latham 14-12 Facility - Partial Flowline Removal

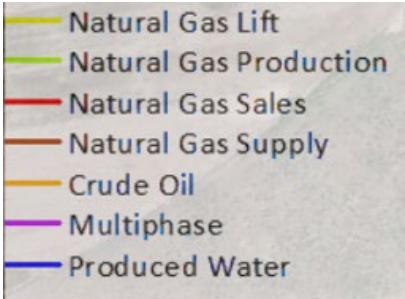
SE ¼ SE ¼ Sec. 11, T4N,R63W, 6<sup>th</sup> PM

Weld County, Colorado

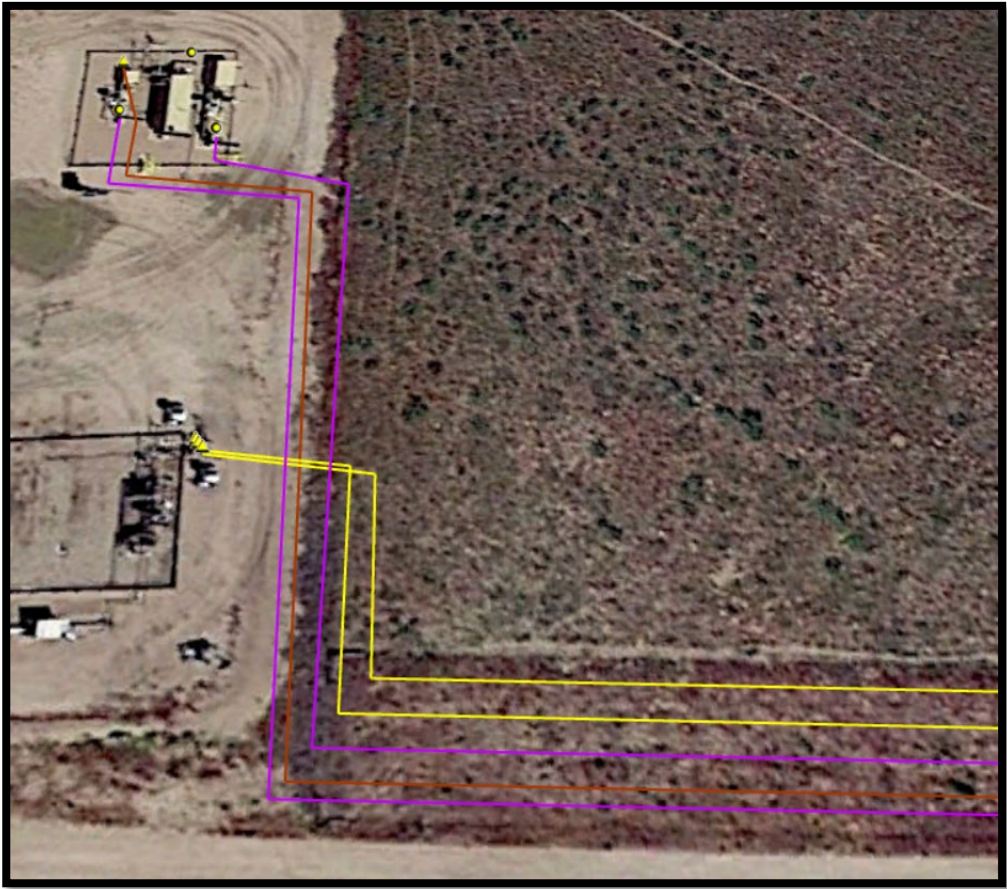


# Latham 14-12 Facility - Partial Flowline Removal

SE ¼ SE ¼ Sec. 11, T4N,R63W, 6<sup>th</sup> PM  
Weld County, Colorado



Flowline Unique OperFeatID	Line Type	Start Location (429893) Latitude	Start Location (429893) Longitude	Flowline Cut Point	Approx. length to be removed
Latham 14-12WP/1/SG Line	Natural Gas Sales	40.321031	-104.39726	40.320520, -104.395867	~560-ft
Latham 14-11-12HZ WH Line	Multi-Phase	40.320983	-104.397256		~550-ft
Latham O-K-12HNB WH Line	Multi-Phase	40.320967	-104.397167		~560-ft
Latham O-K-12/2/GL Line	Gas Lift	40.320716	-104.397153		~415-ft
Latham 14-11-12/2/GL Line	Gas Lift	40.320718	-104.397156		~415-ft



# Latham 14-12 Facility - Partial Flowline Removal

SE ¼ SE ¼ Sec. 11, T4N,R63W, 6<sup>th</sup> PM  
Weld County, Colorado

40.320520, -104.395867



Flowline Cut Point



¼ Mile Buffer

