


Photographic Log

											
Equipment ID: FL01		Equipment Type: Flowline		Equipment ID:		Equipment Type:					
Material: Steel		Volume: N/A		Contents: Oil/Gas/Water		Material:		Volume:		Contents:	
Notes/Conditions: FL01 @ 4.5' sample location at flowline inlet to separator. Visible water is residual from hydro-excavator.						Notes/Conditions:					

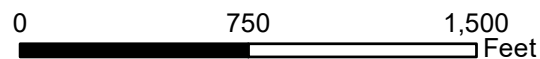
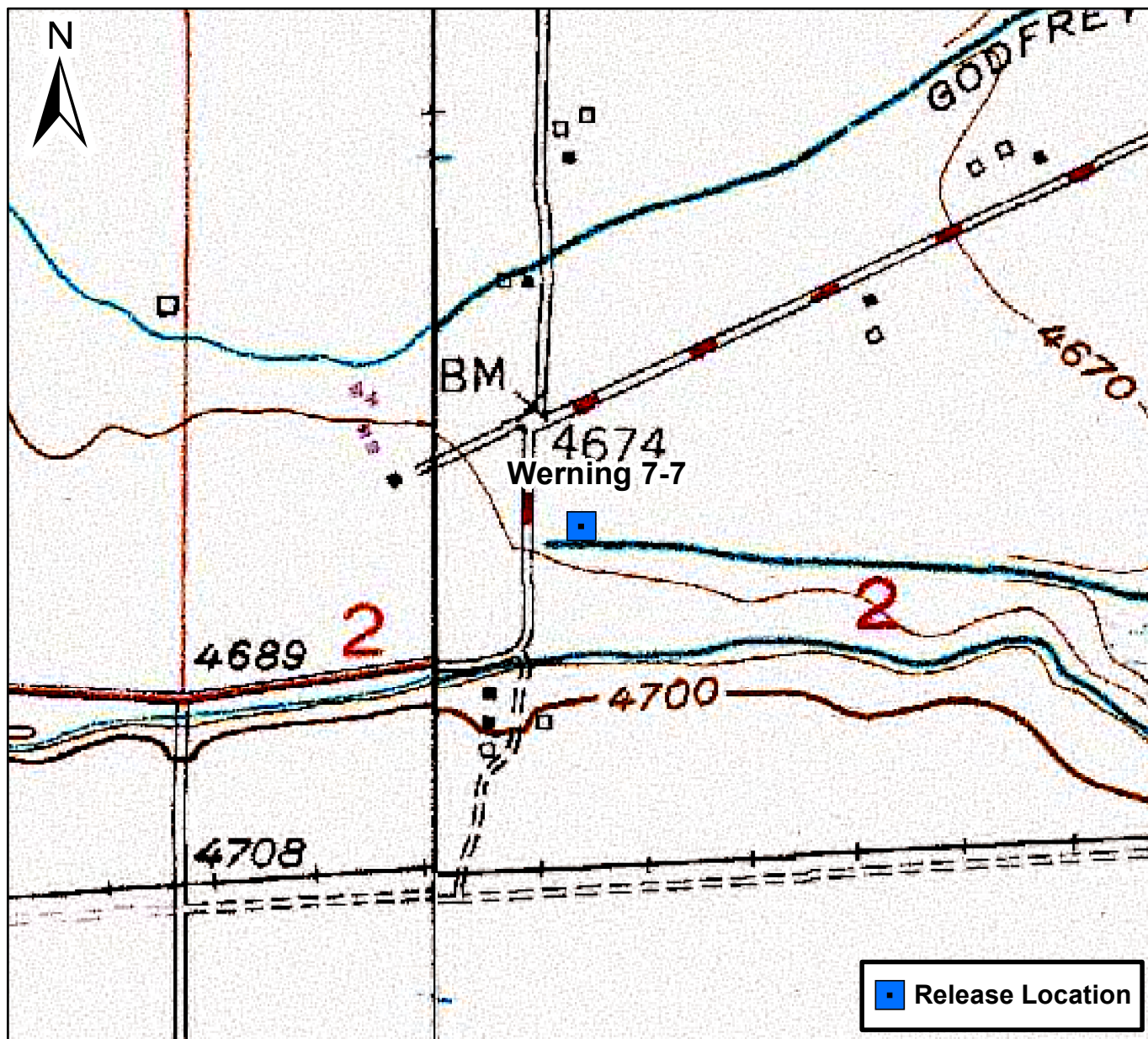


Figure 1

Site Location Map
Werning 7-7
SENW S2 T4N R66W
Weld County, Colorado





Legend

--- Excavation Extent

⊕ Soil Sample Location – Lab Analyzed
(Collected via Trimble GPS)


Notes

1) All locations are approximate unless otherwise noted.
2) Buried infrastructure has been spatially projected.
3) Analytical results below laboratory detection limits or within compliance of COGCC Table 915-1 not shown.
4) Concentration in exceedance of COGCC table 915-1 soil standards indicated in **RED**.

GPS – Global Positioning System
mg/kg – Milligrams per kilogram

0 ft. 20 ft. 40 ft.

Image Source: Google Earth; Google 2020

DATE: 2/23/2021	 TASMAN GEOSCIENCES	Tasman Geosciences, Inc. 6855 W 119 th Avenue Broomfield, CO 80020	Noble Energy, Inc. – DJ Basin Werning 7-2 SENW, Section 2, Township 4 North, Range 66 West Weld County, Colorado	Wellhead Closure & Soil Analytical Results Map (02/23/2021)	FIGURE 2
DESIGNED BY: JW					
DRAWN BY: JW					