



Well Services
E - L I N E

**RADIAL BOND TOOL
GAMMA RAY
CCL**

Company NOBLE ENERGY
Well PERKINS USX Y 7-17
Field WATTENBERG
County WELD
State COLORADO

Company NOBLE ENERGY
Well PERKINS USX Y 7-17
Field WATTENBERG
County WELD State COLORADO

Location: API # : 05-123-09505
LAT. 40.15641 LONG. -104.58939
SEC 7 TWP 2N RGE 64W
Permanent Datum GL Elevation 4878'
Log Measured From KB 12'
Drilling Measured From KB
Other Services
Elevation
K.B. 4890'
D.F. 4889'
G.L. 4878'

Date 11-11-2020
Run Number ONE
Depth Driller 7730'
Depth Logger 7030'
Bottom Logged Interval 7026'
Top Log Interval SURFACE
Open Hole Size NA
Type Fluid WATER
Density / Viscosity NA
Max. Recorded Temp. 207.8 °F
Estimated Cement Top 6946'
Time Well Ready NA
Time Logger on Bottom NA
Equipment Number 3813
Location GREELEY CO
Recorded By J. KERR
Witnessed By M. ABBOTT

Borehole Record				Tubing Record			
Run Number	Bit	From	To	Size	Weight	From	To

	Size	Wgt/Ft	Top	Bottom
Casing Record				
Surface String	8 5/8"	24#	SURFACE	250'
Prot. String				
Production String	4.5"	10.5#	SURFACE	7730'
Liner				

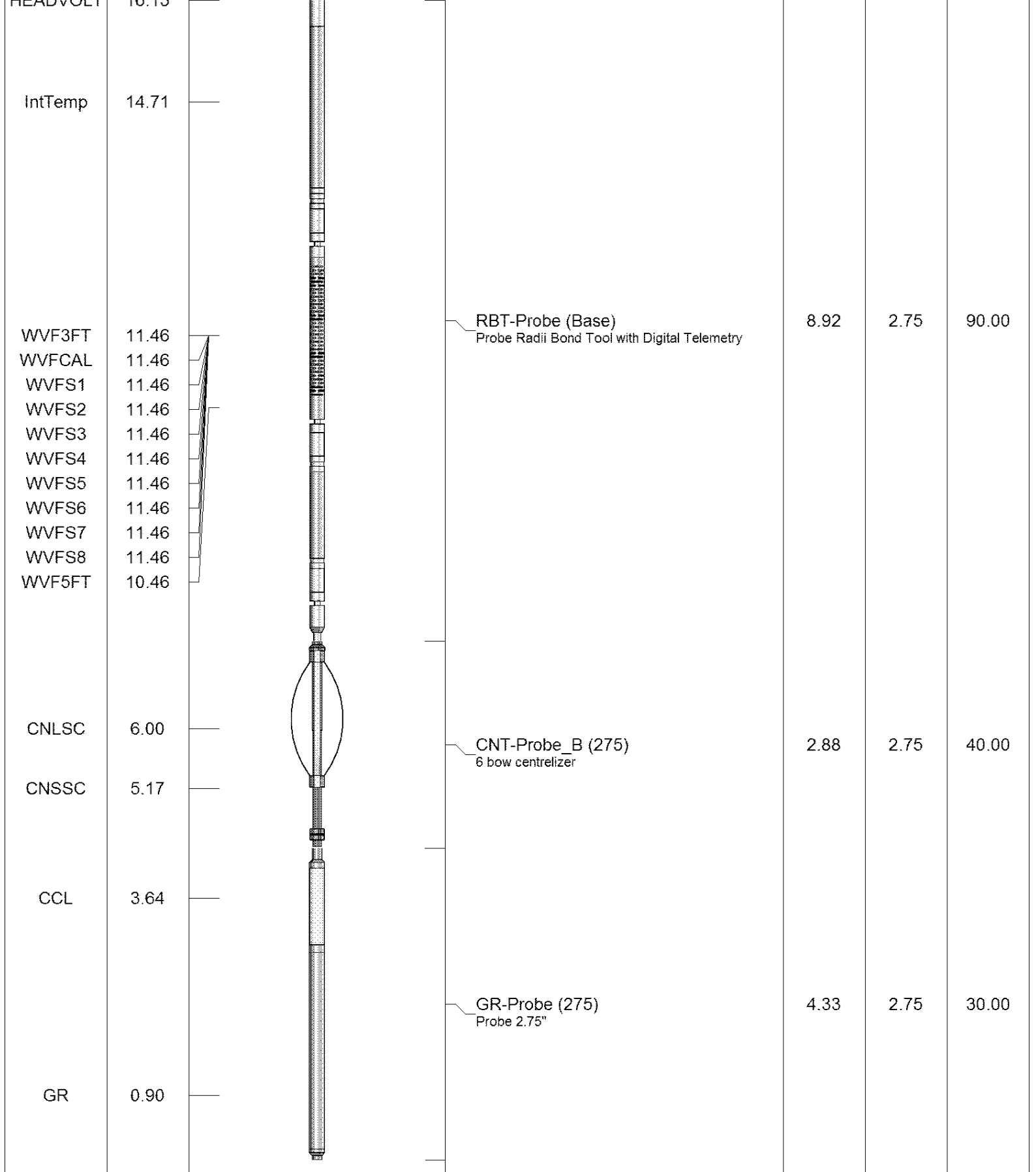
<<< Fold Here >>>

All interpretations are opinions based on inferences from electrical or other measurements and we cannot and do not guarantee the accuracy or correctness of any interpretation, and we shall not, except in the case of gross or willful negligence on our part, be liable or responsible for any loss, costs, damages, or expenses incurred or sustained by anyone resulting from any interpretation made by any of our officers, agents or employees. These interpretations are also subject to our general terms and conditions set out in our current Price Schedule.

Comments

RAN CBL TO VERIFY CEMENT BOND
WELL LOADED UPON ARRIVAL

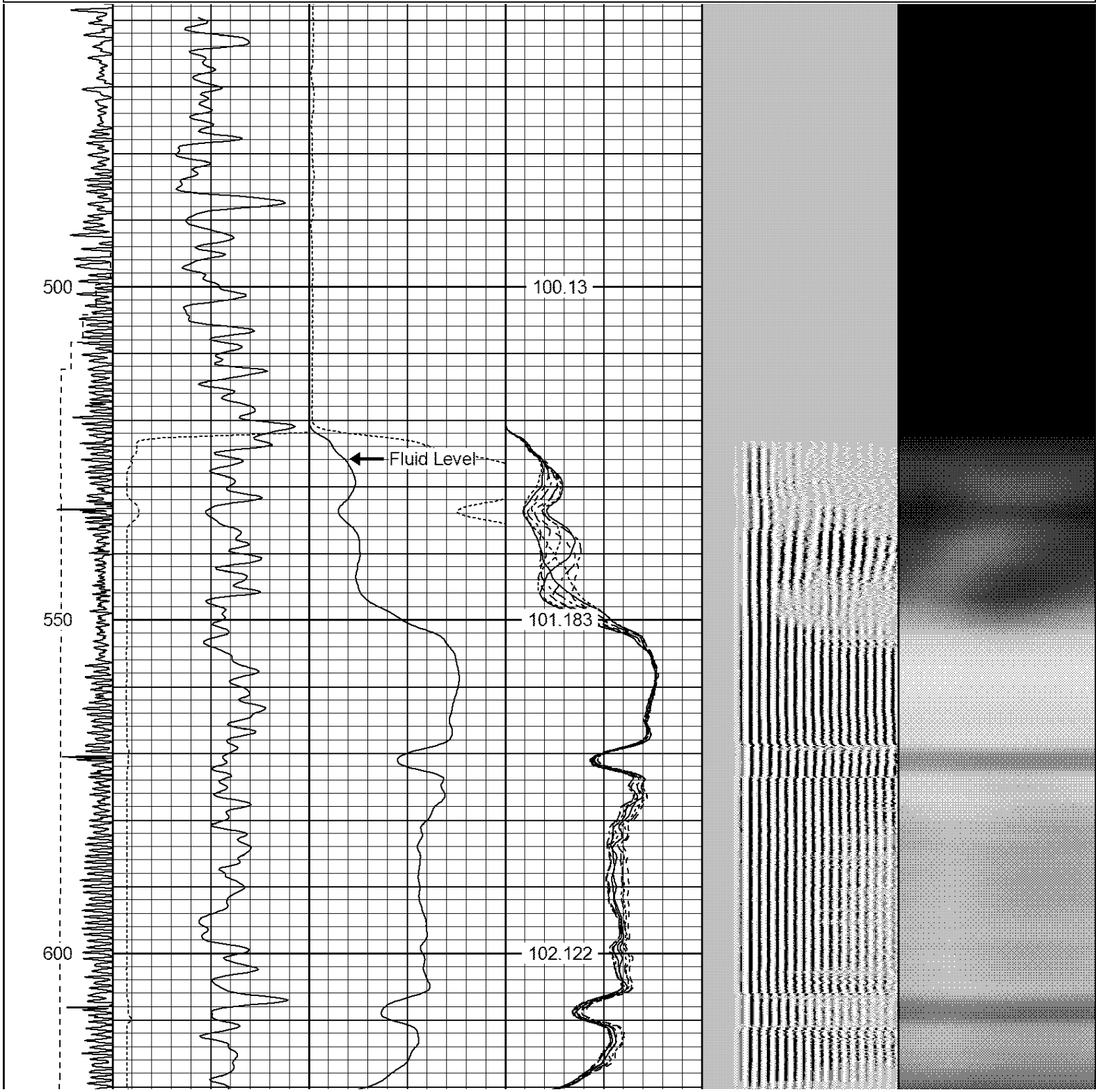
Sensor	Offset (ft)	Schematic	Description	Len (ft)	OD (in)	Wt (lb)
			1_4	1.00	1.36	5.00

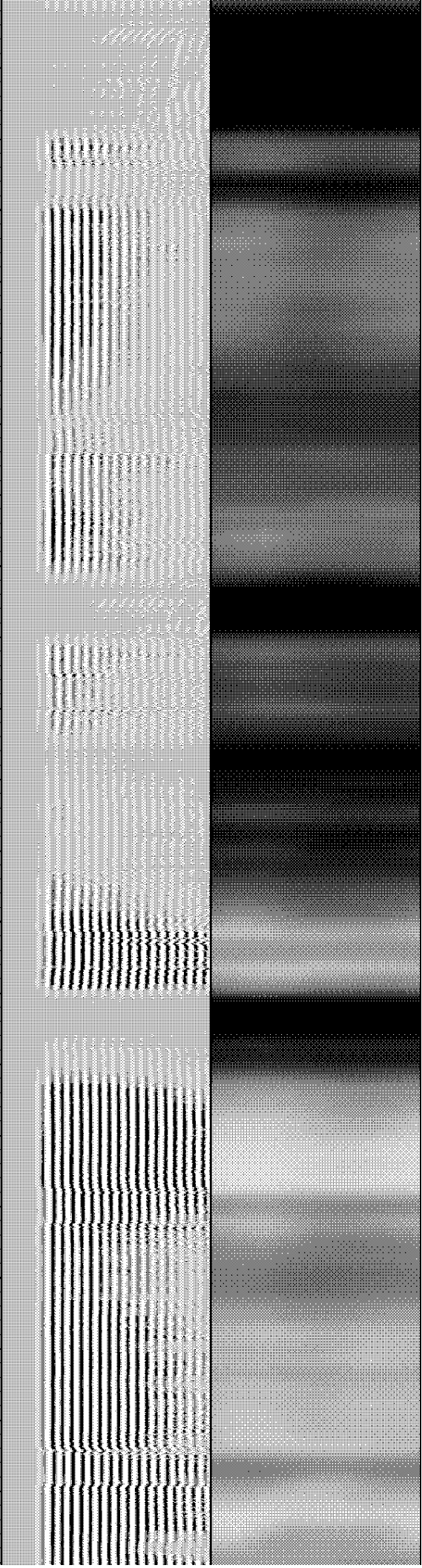
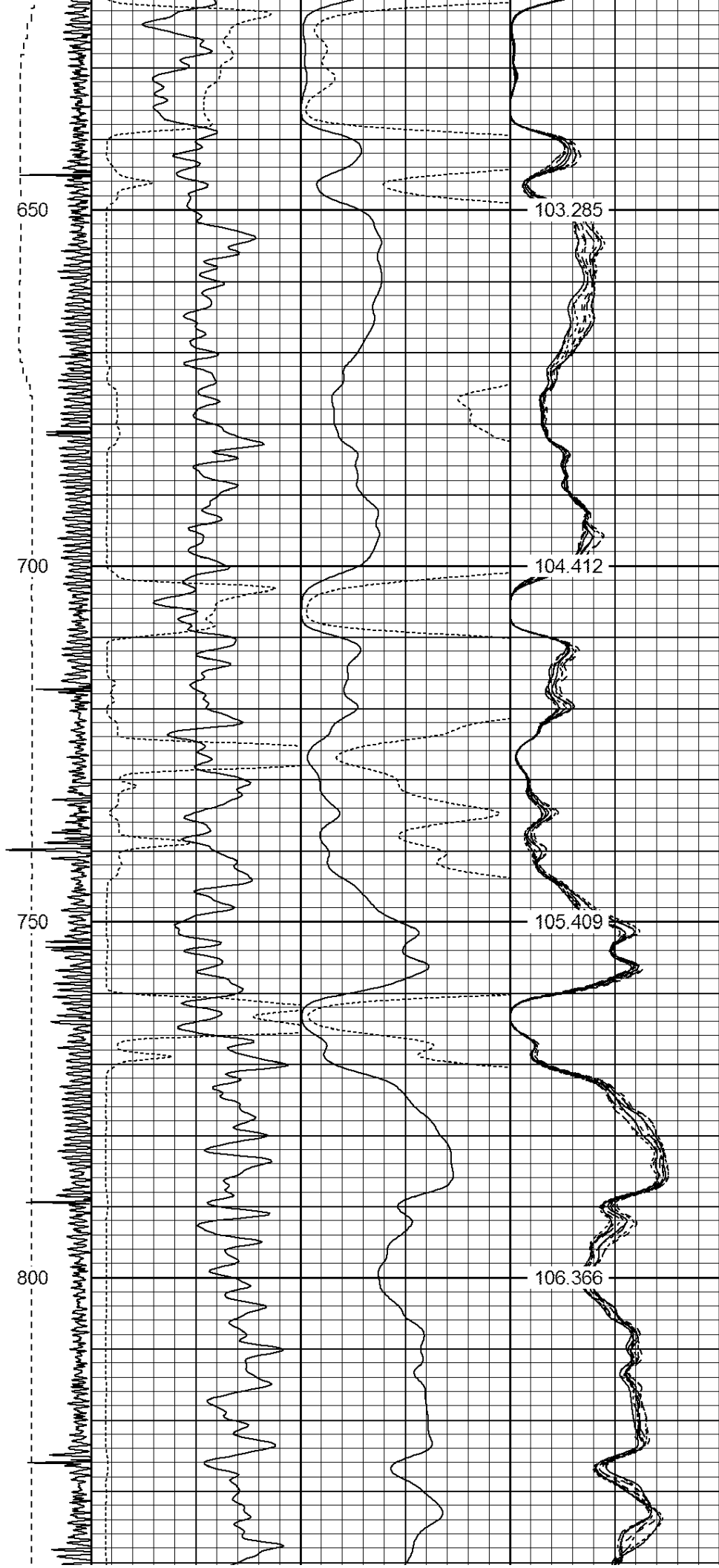


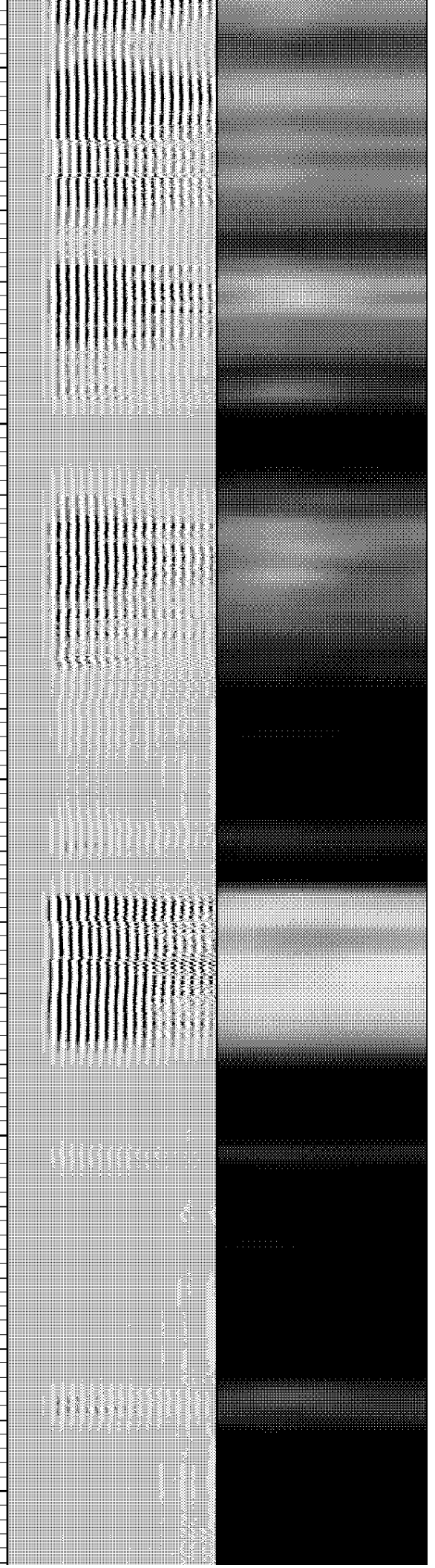
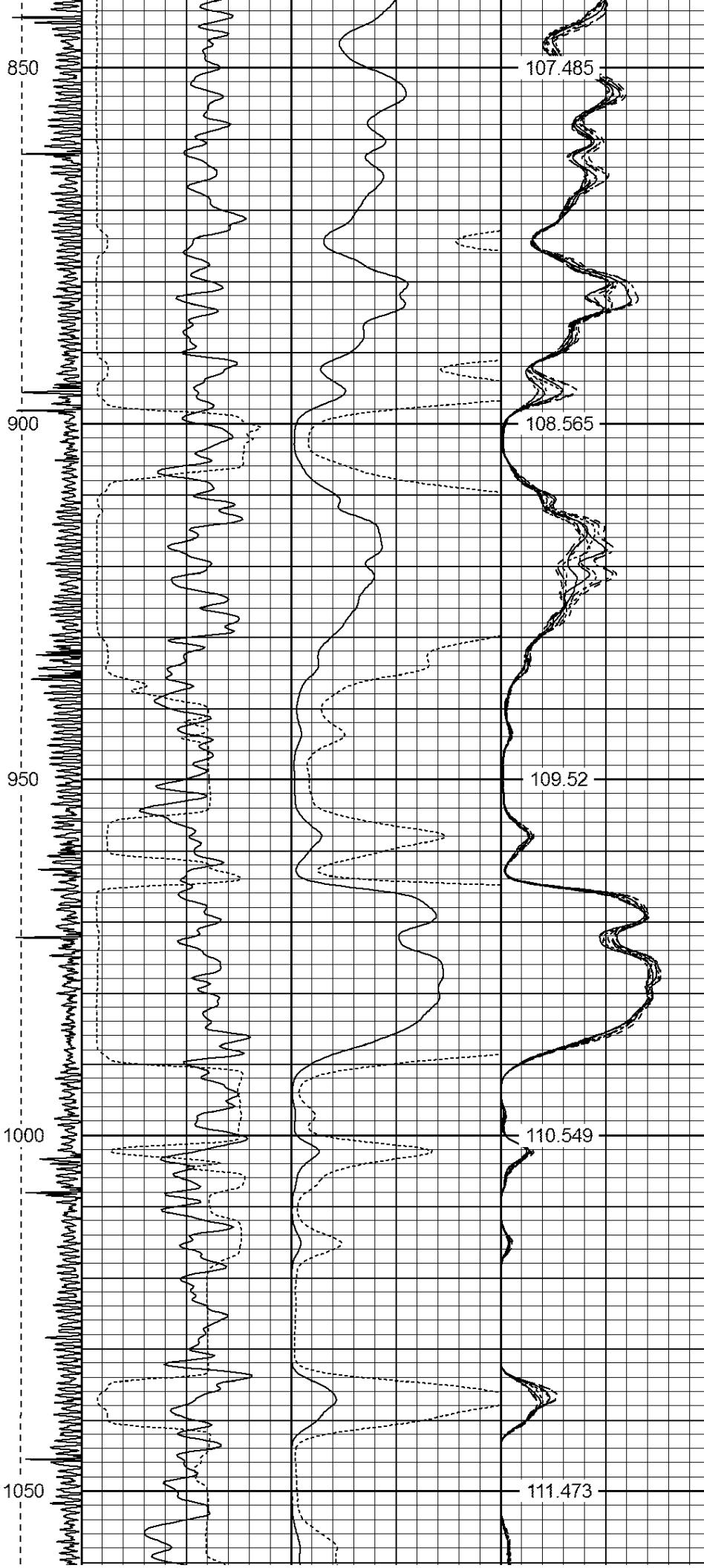
Dataset: perkins usx y 7-17.db: field/well/run1/pass2
 Total Length: 17.13 ft
 Total Weight: 165.00 lb
 O.D.: 2.75 in

Database File: perkins usx y 7-17.db
 Dataset Pathname: pass2
 Presentation Format: ips_rbt

-9	CCL	1	200	TT (usec)	1100	0	AMP (mV)	100	0	AMPS1	100	200	VDL	1200	1	Cement Map	8
	LSPD		0	GR (GAPI)	200	0	AMPx5 (mV)	20	0	AMPS2	100				100		1
	(ft/min)		200	GR (GAPI)	400					0	AMPS3	100					
0		250								0	AMPS4	100					
										0	AMPS5	100					
										0	AMPS6	100					
										0	AMPS7	100					
										0	AMPS8	100					
											IntTemp						
											(degF)						



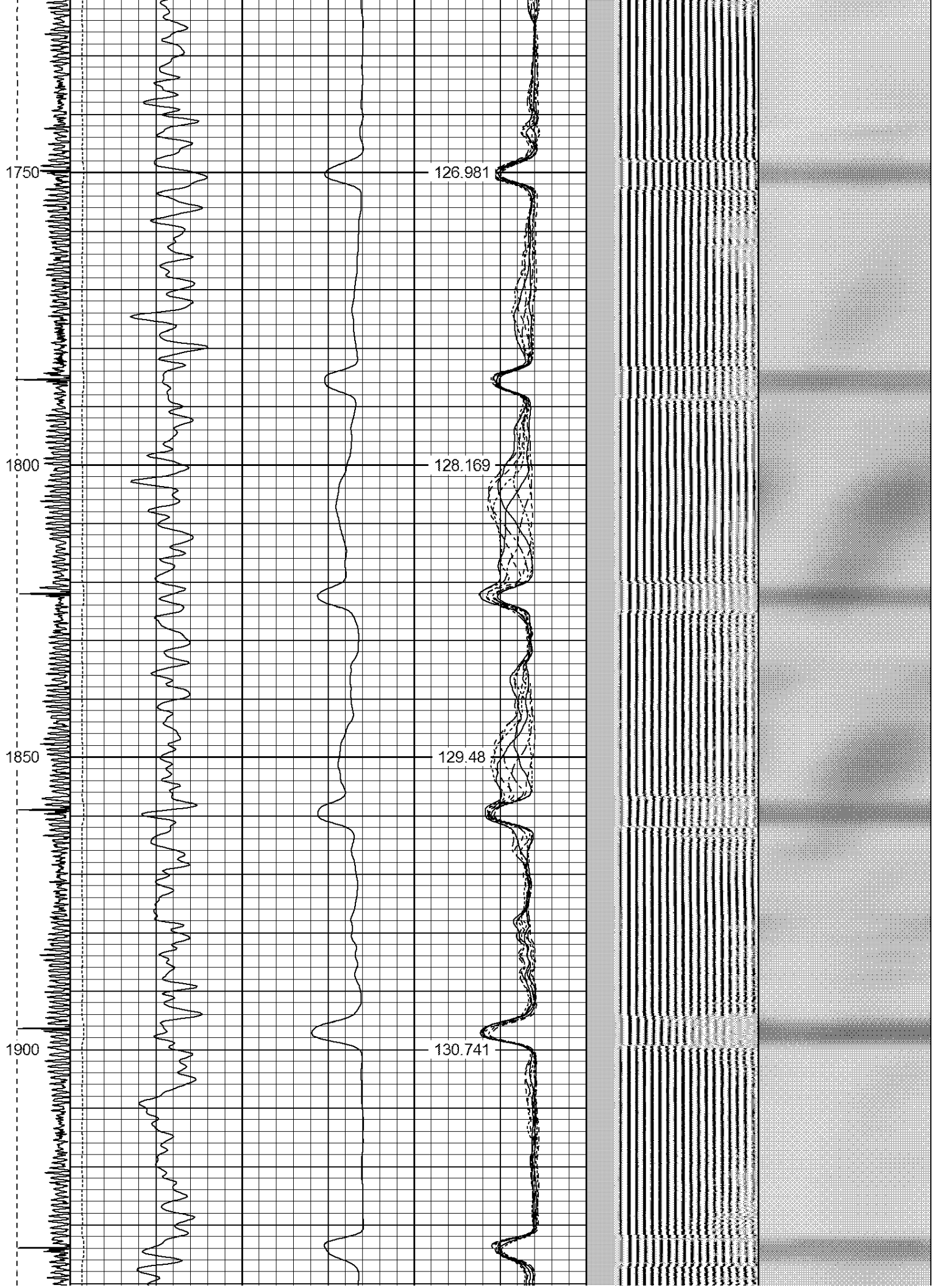






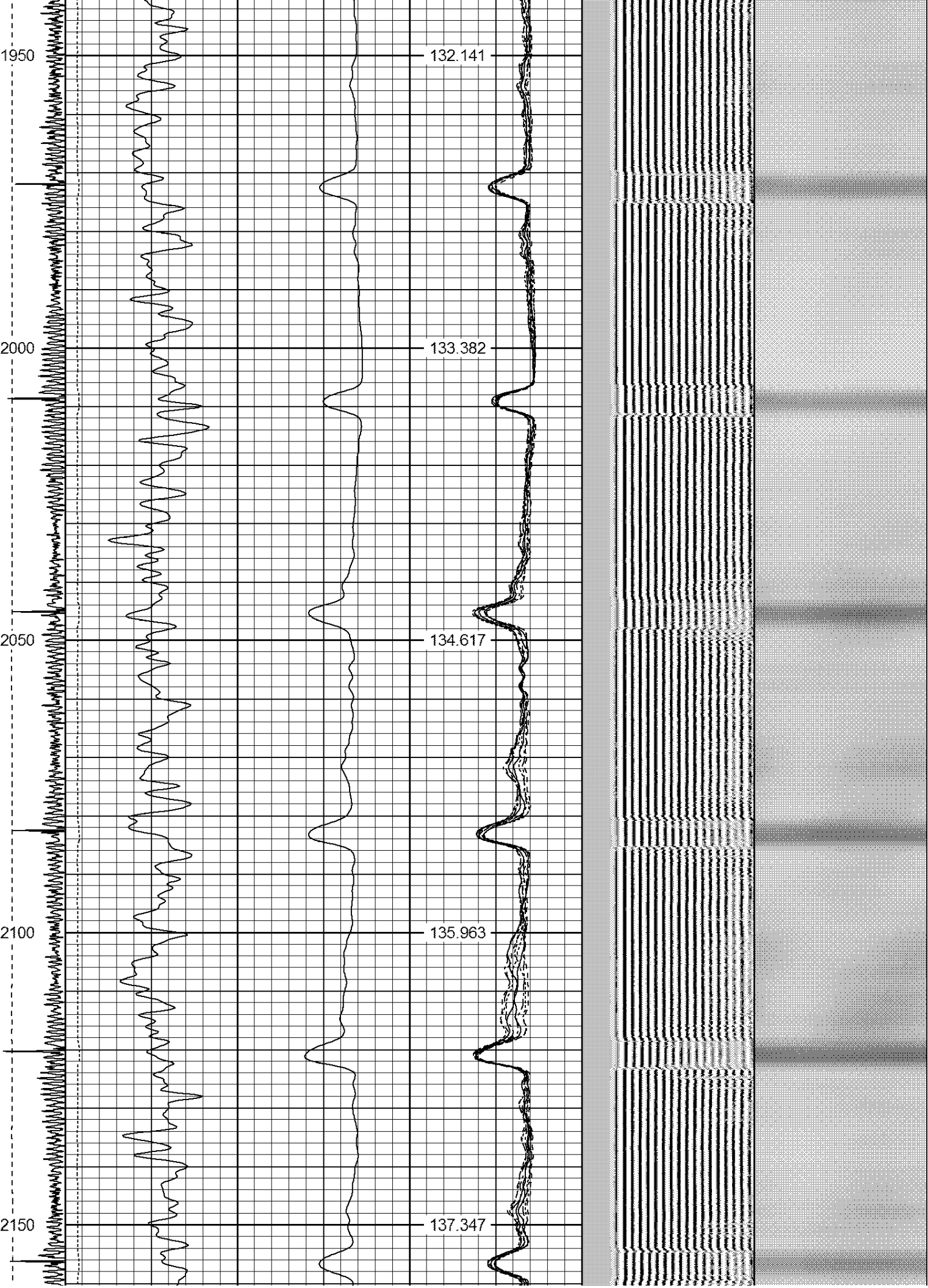




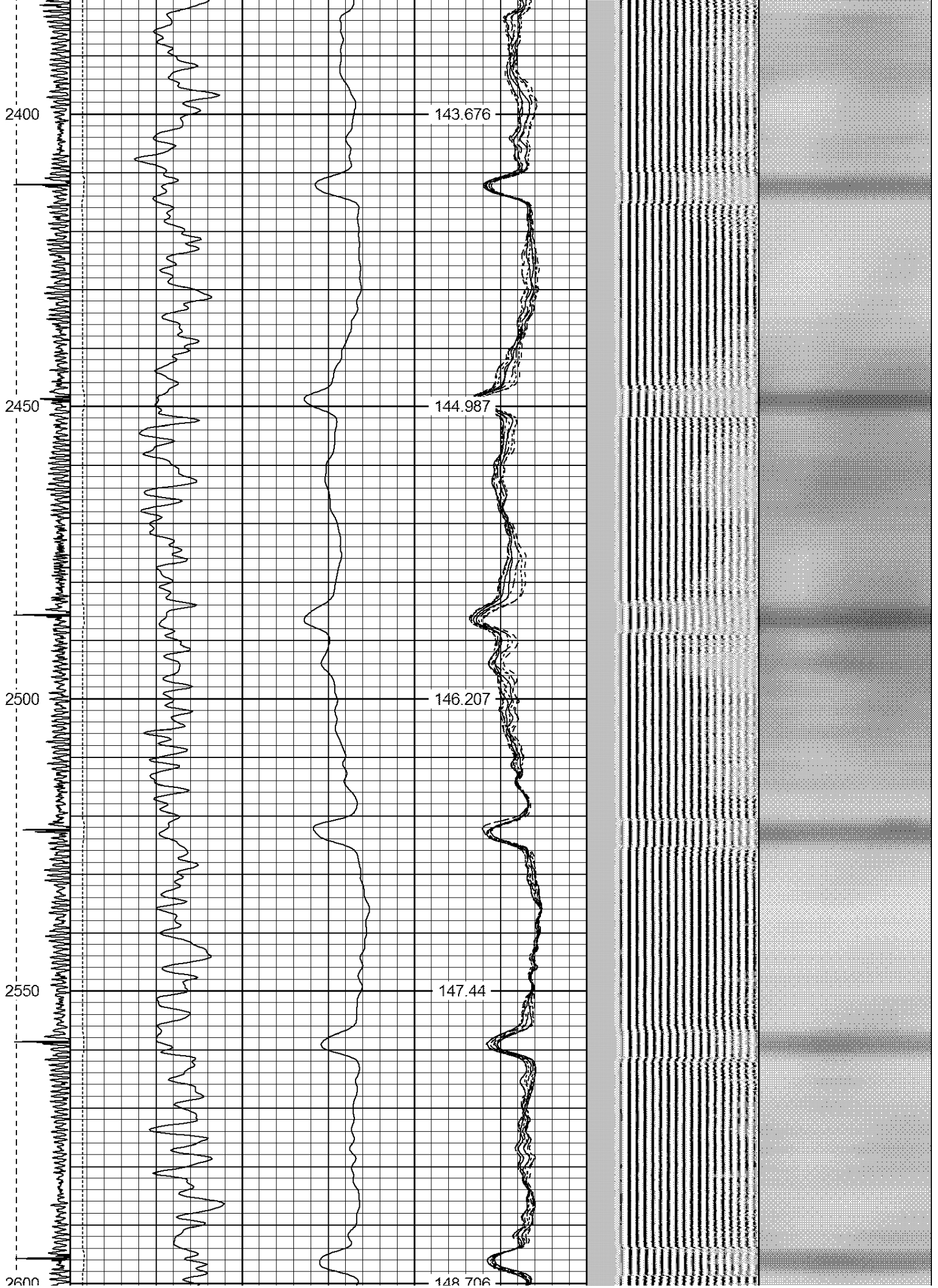


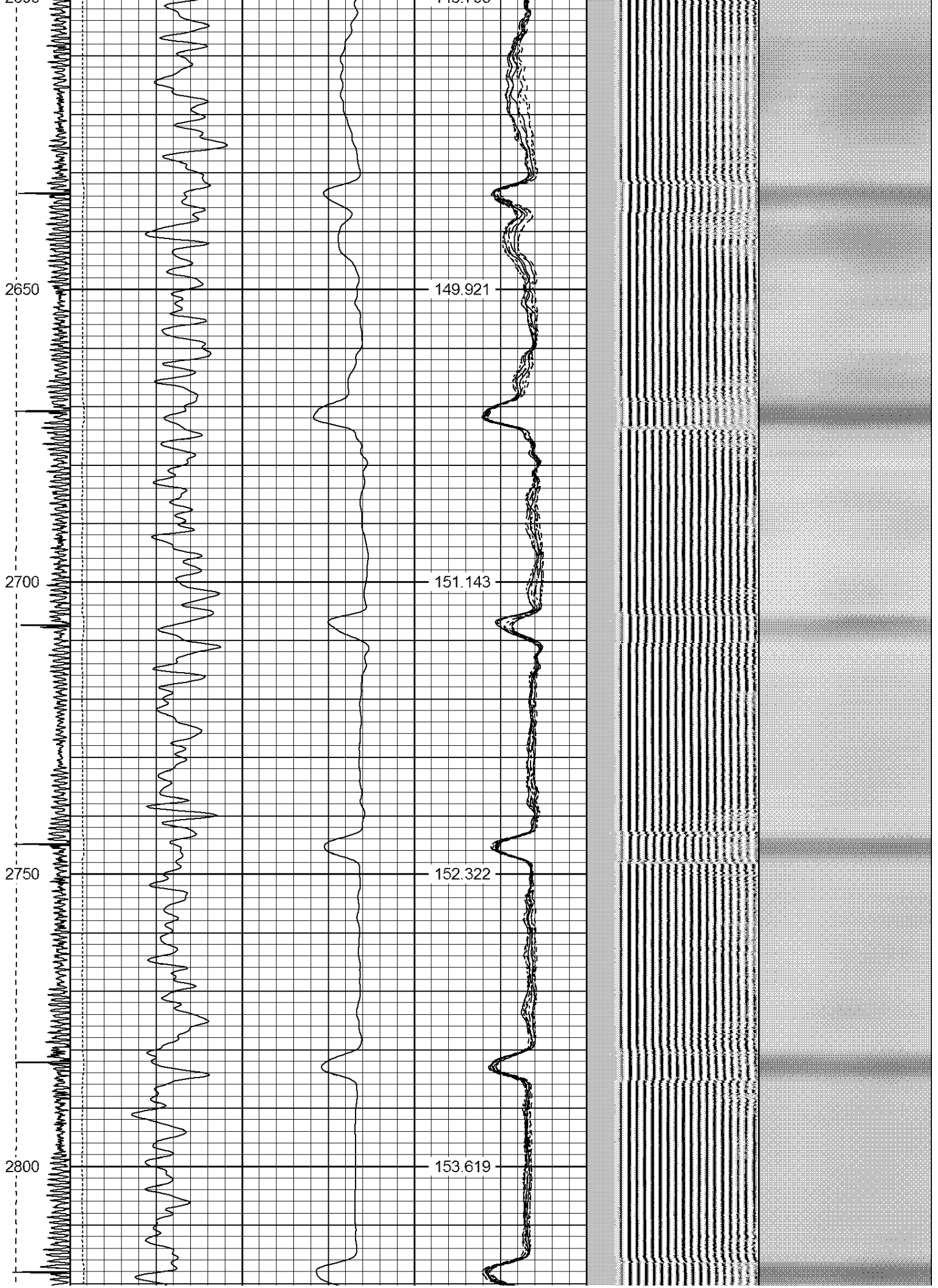
1950
2000
2050
2100
2150

132.141
133.382
134.617
135.963
137.347









2850

154.898

2900

156.118

2950

157.367

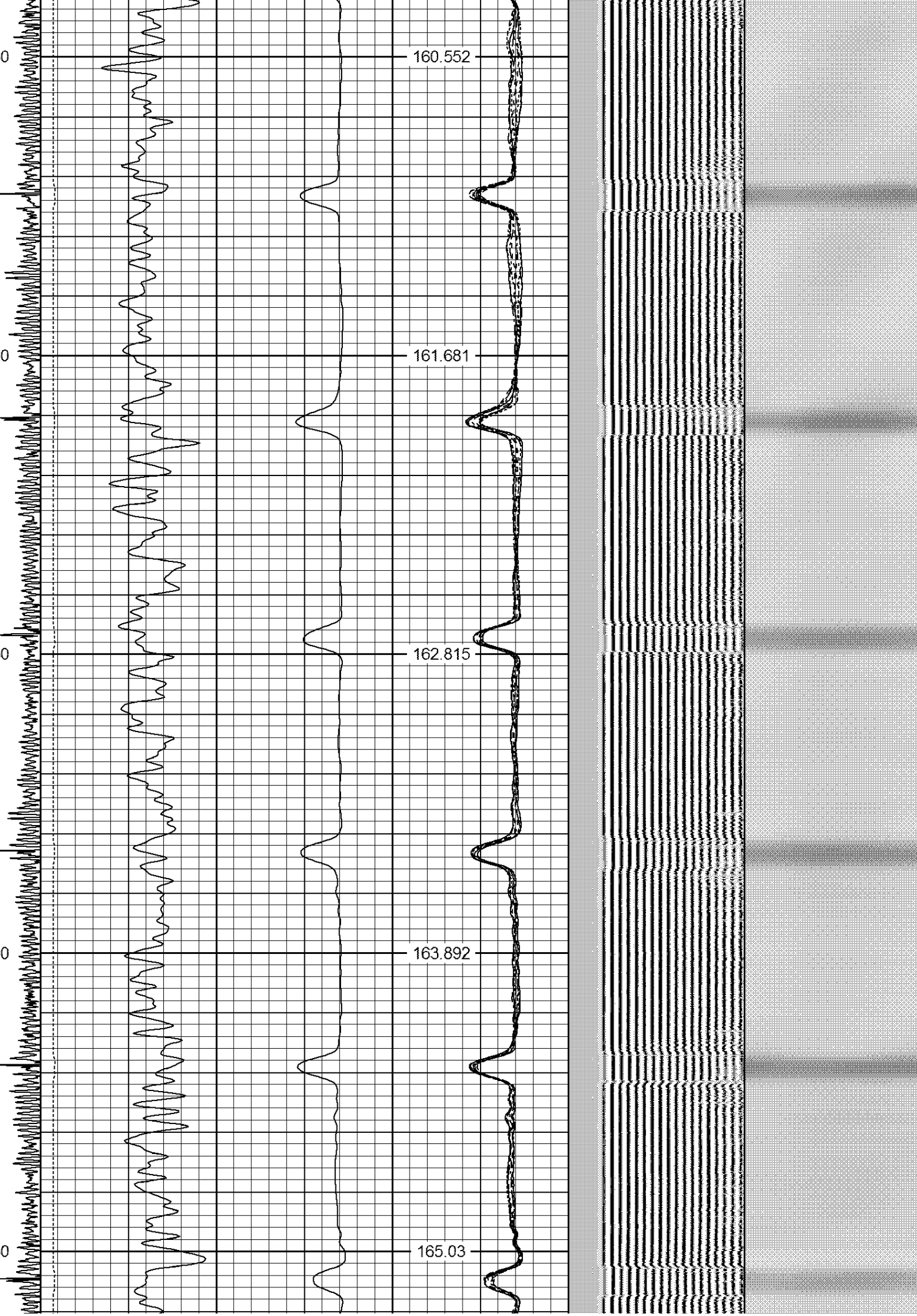
3000

158.692

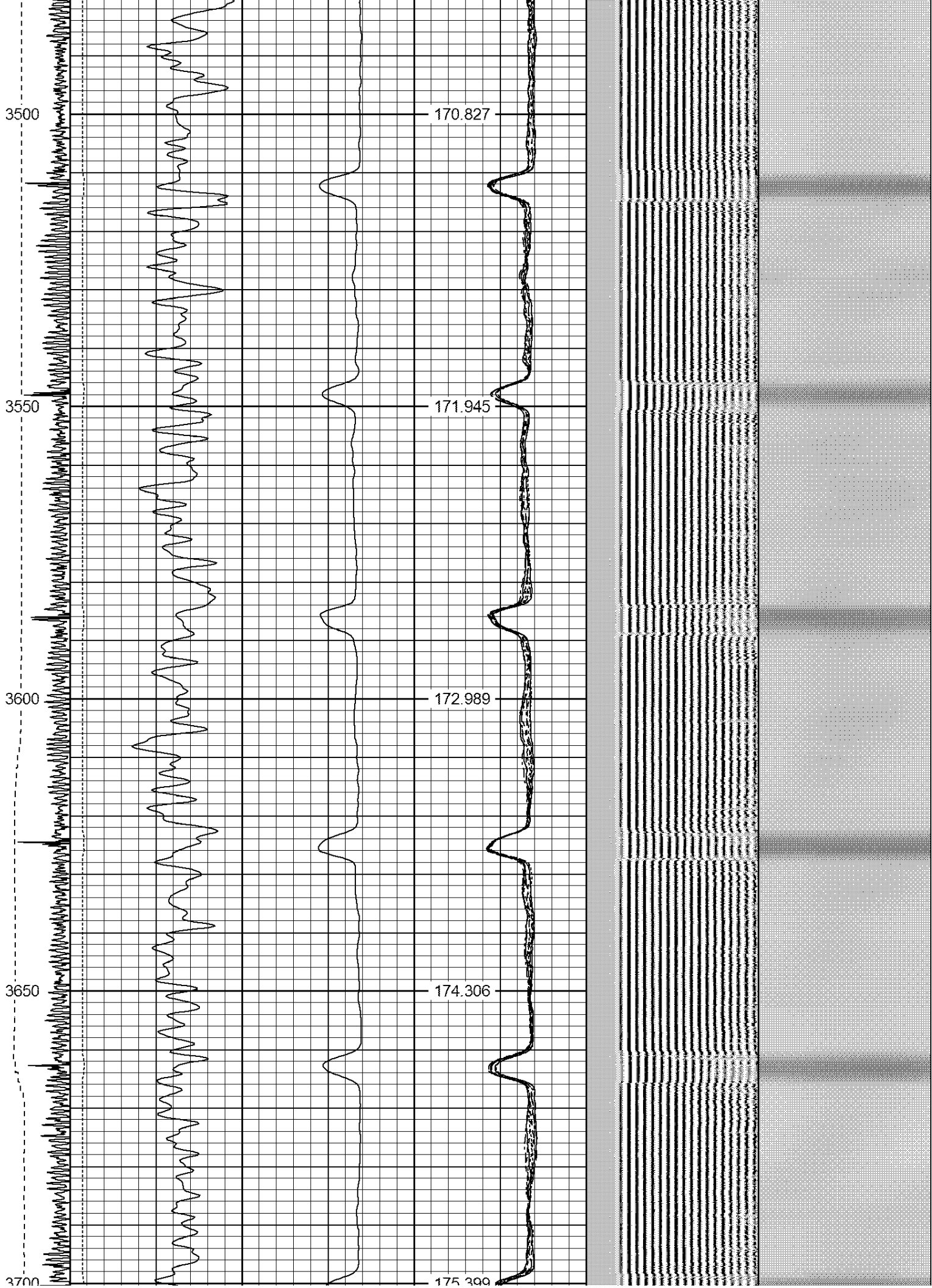


3050
3100
3150
3200
3250

160.552
161.681
162.815
163.892
165.03











4150
4200
4250
4300
4350

183.555
184.611
185.478
186.315
187.218





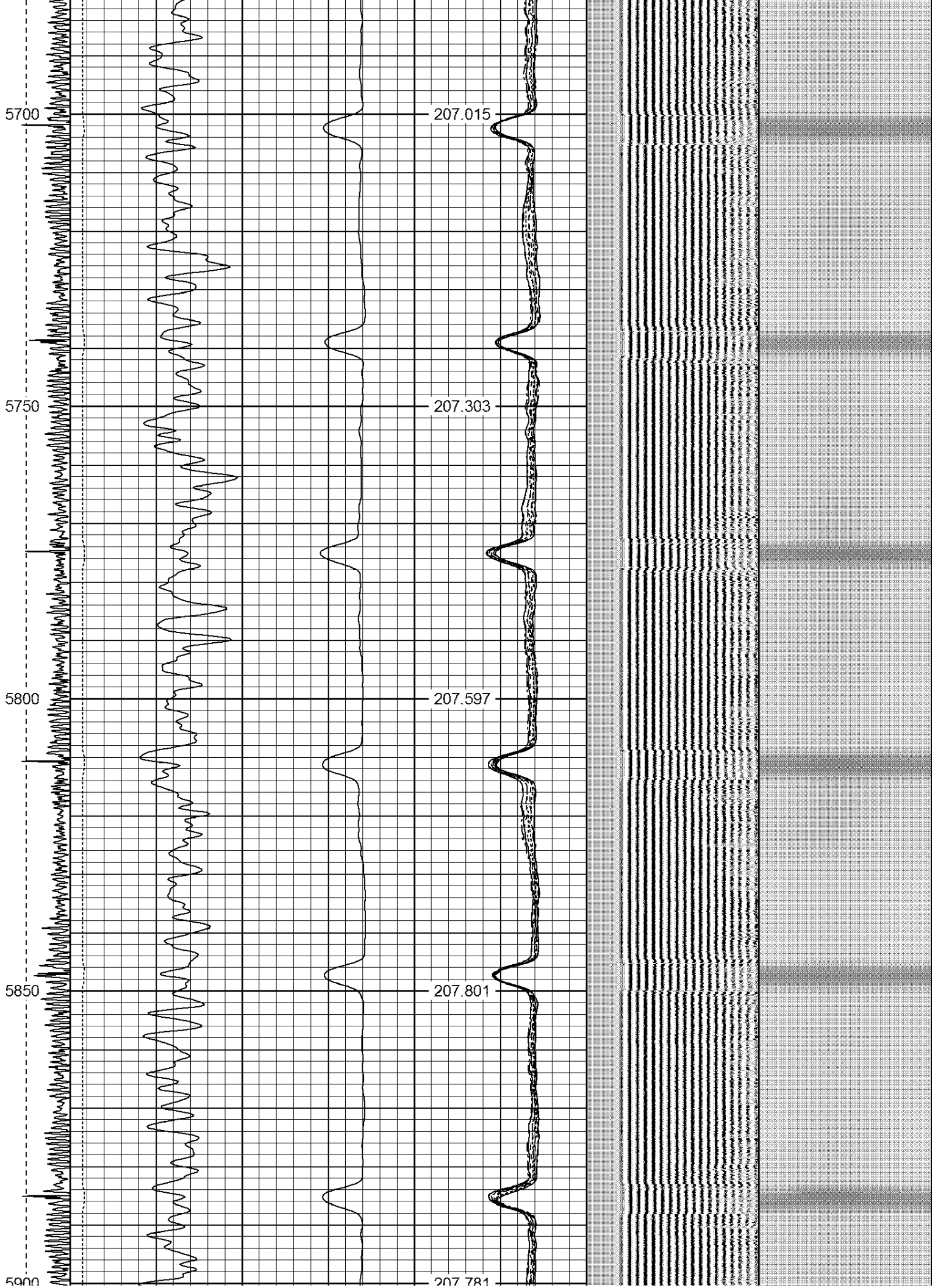














6150

207.258

6200

207.07

6250

206.646

6300

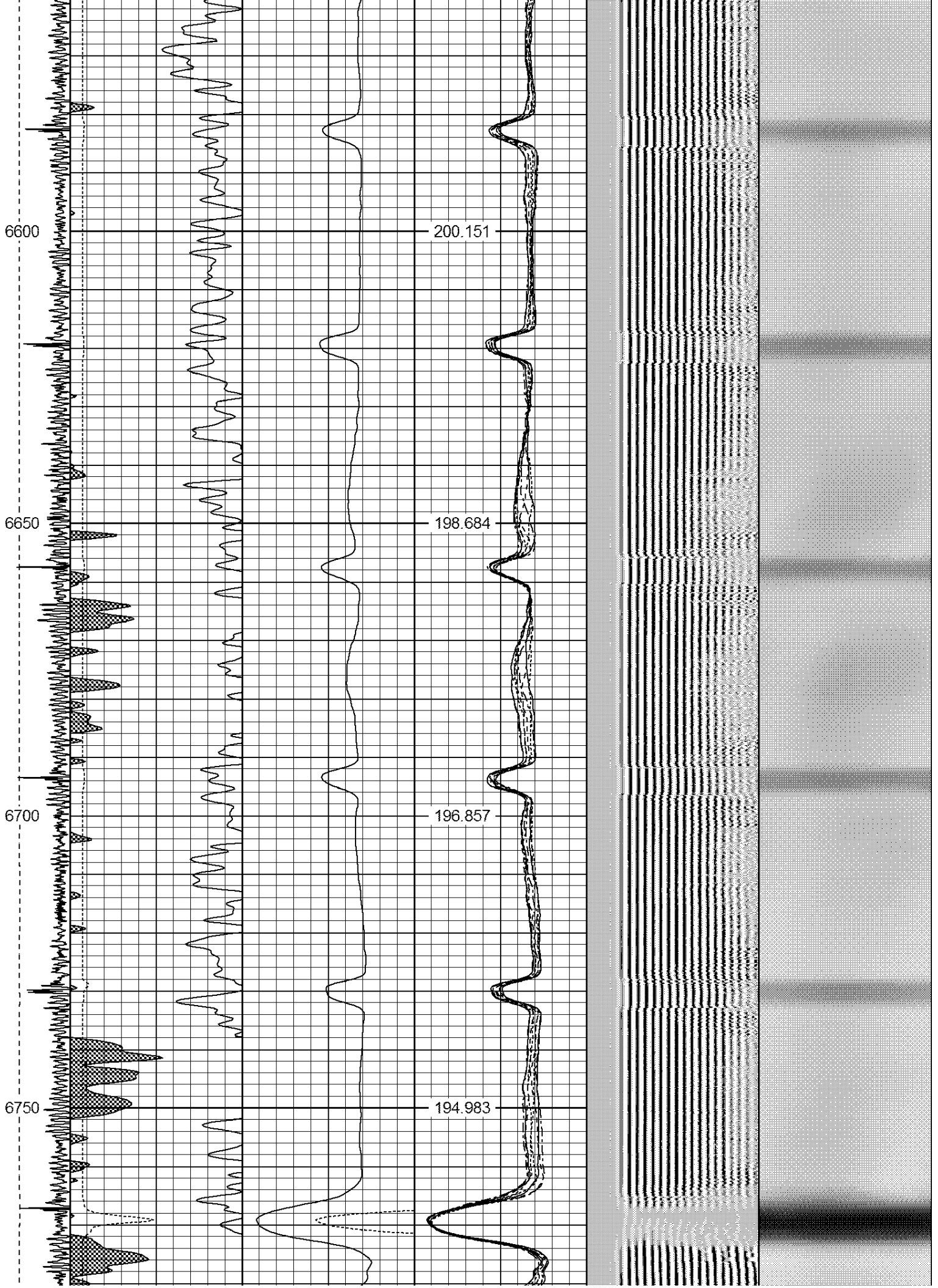
206.014

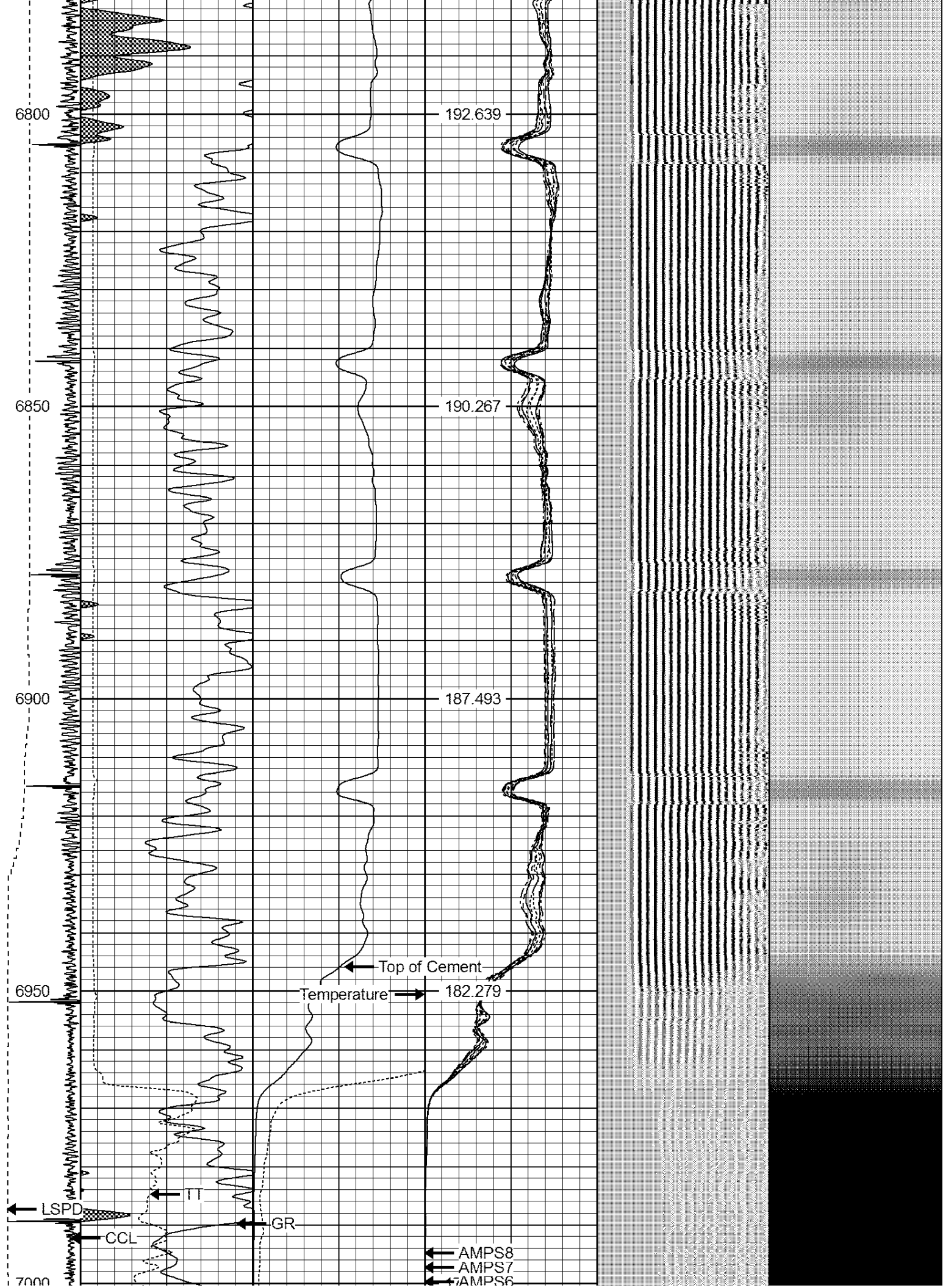


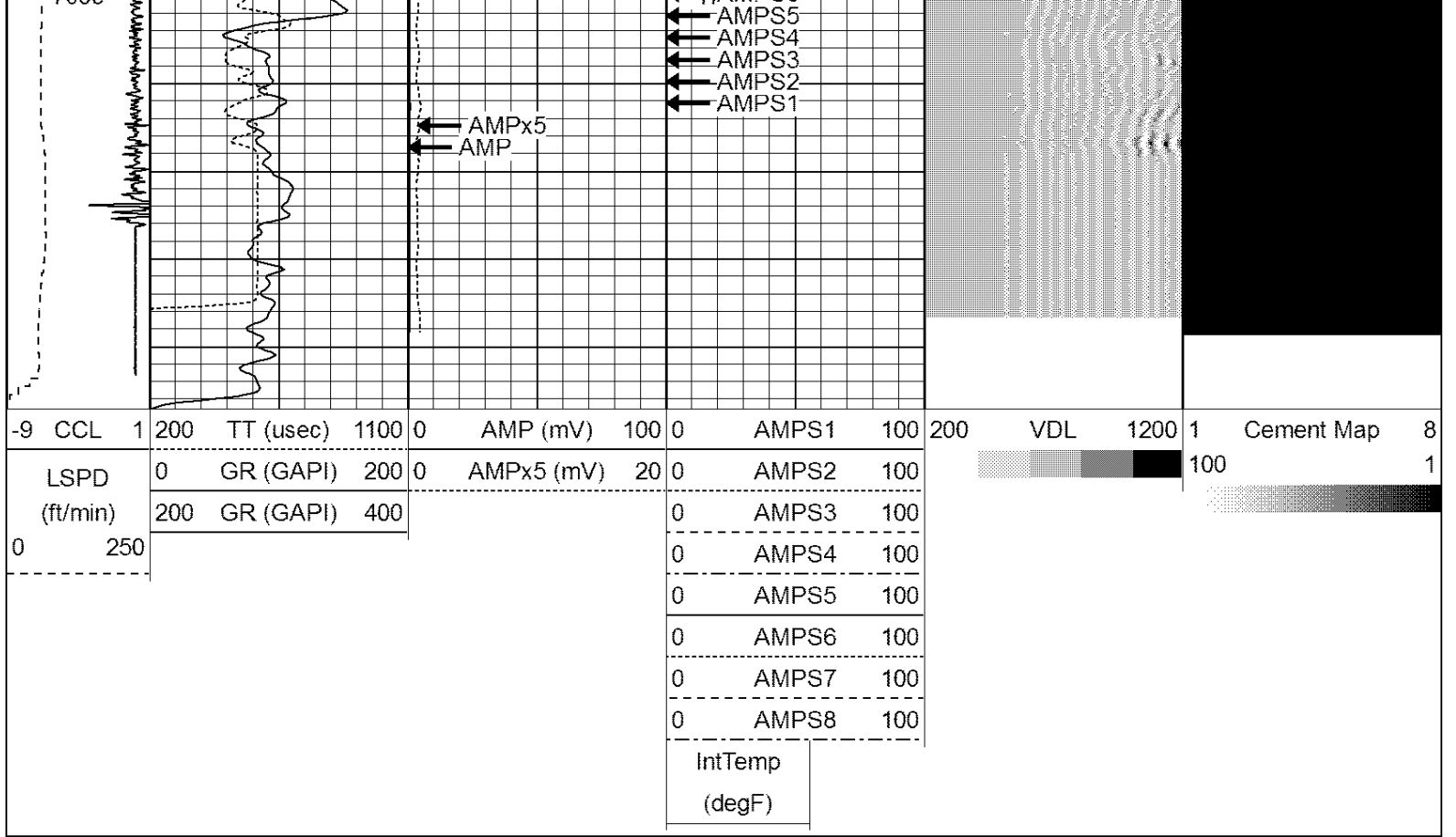
6350
6400
6450
6500
6550

205.443
204.732
203.809
202.838
201.651









Well Services
E - L I N E

Company NOBLE ENERGY
 Well PERKINS USX Y 7-17
 Field WATTENBERG
 County WELD
 State COLORADO