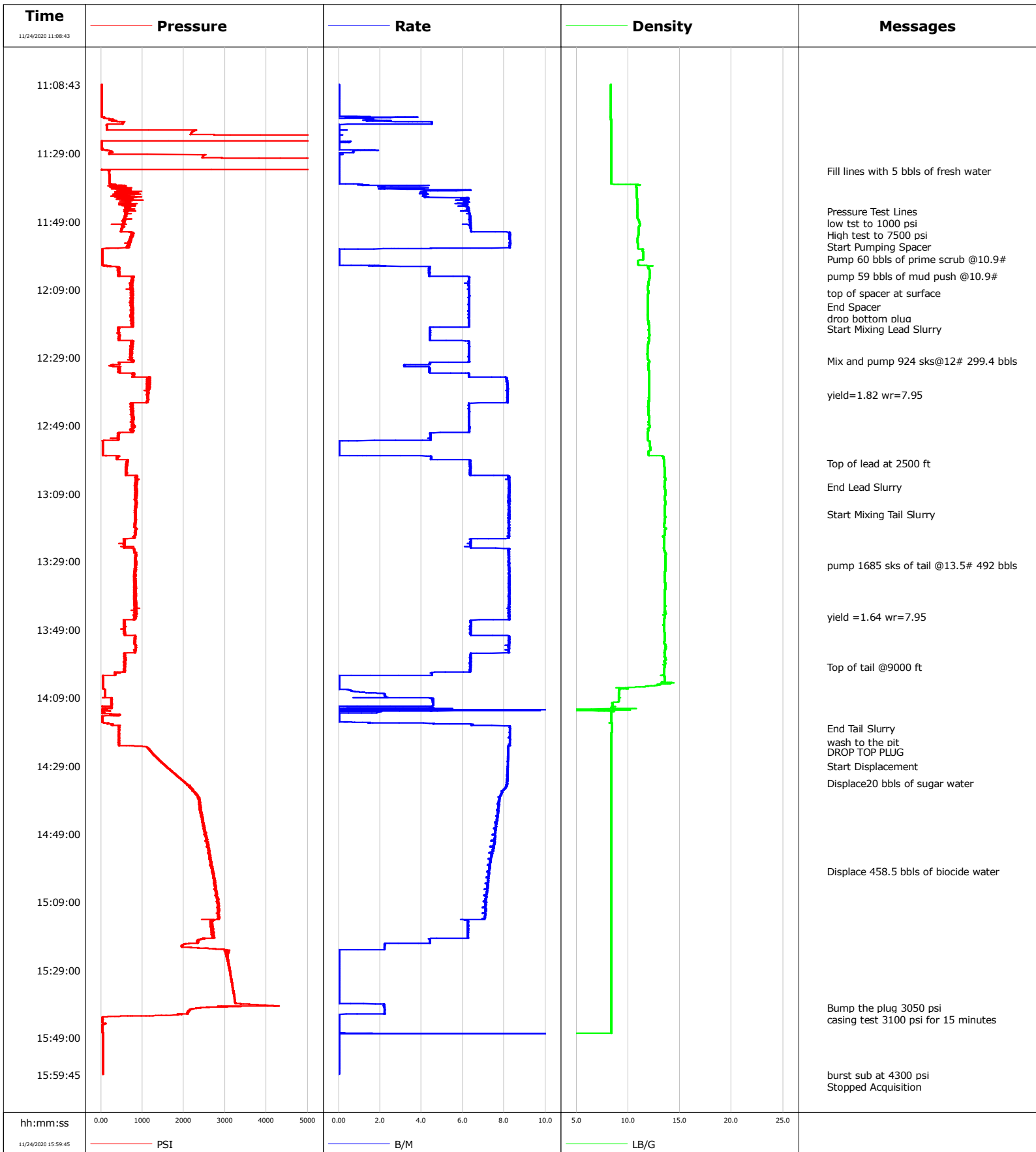


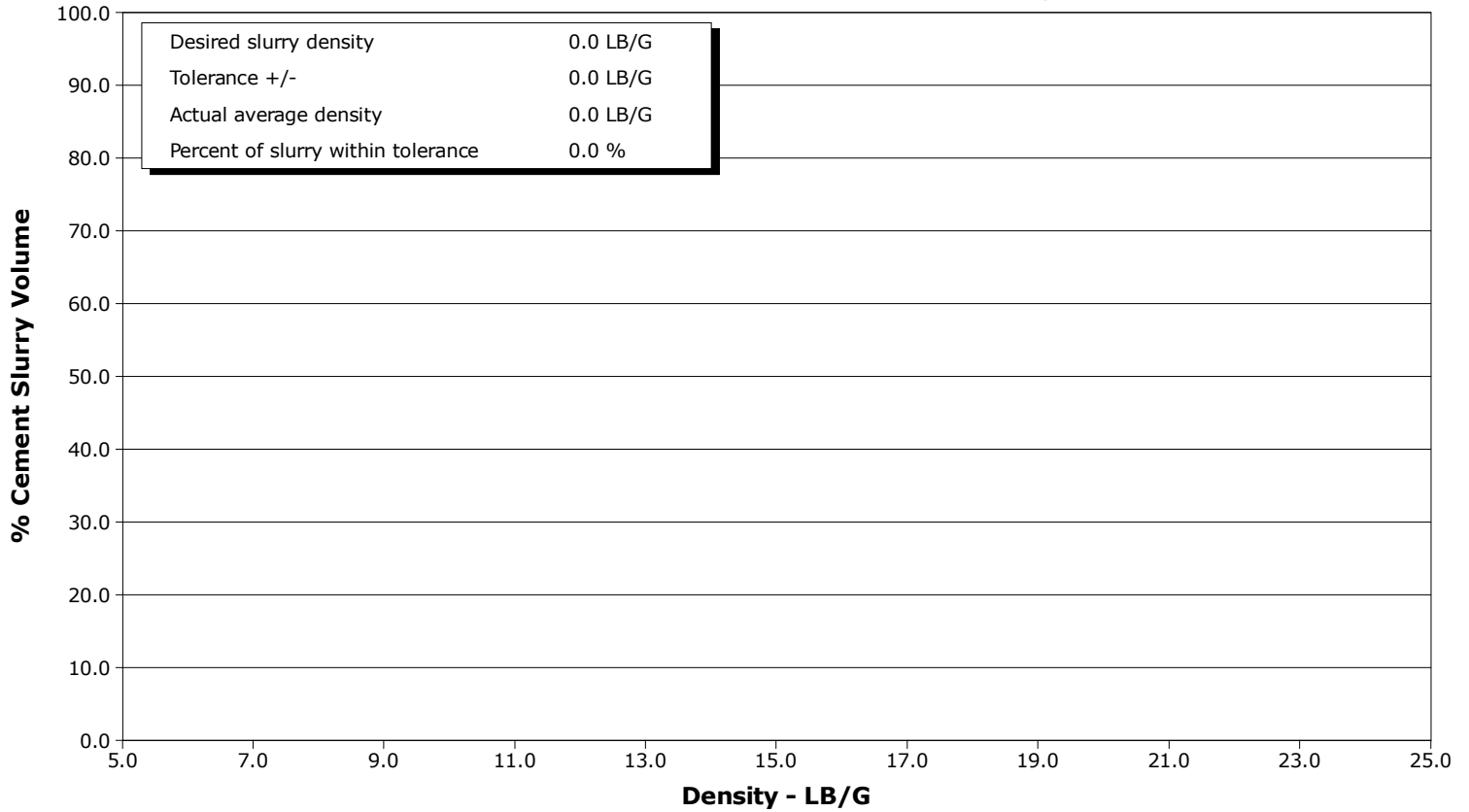
Well	PROWANT	Client	ANADARKO
Field	DJ	SIR No.	3198300
Engineer	Albert S.	Job Type	PRODUCTION
Country	United States	Job Date	11-24-2020



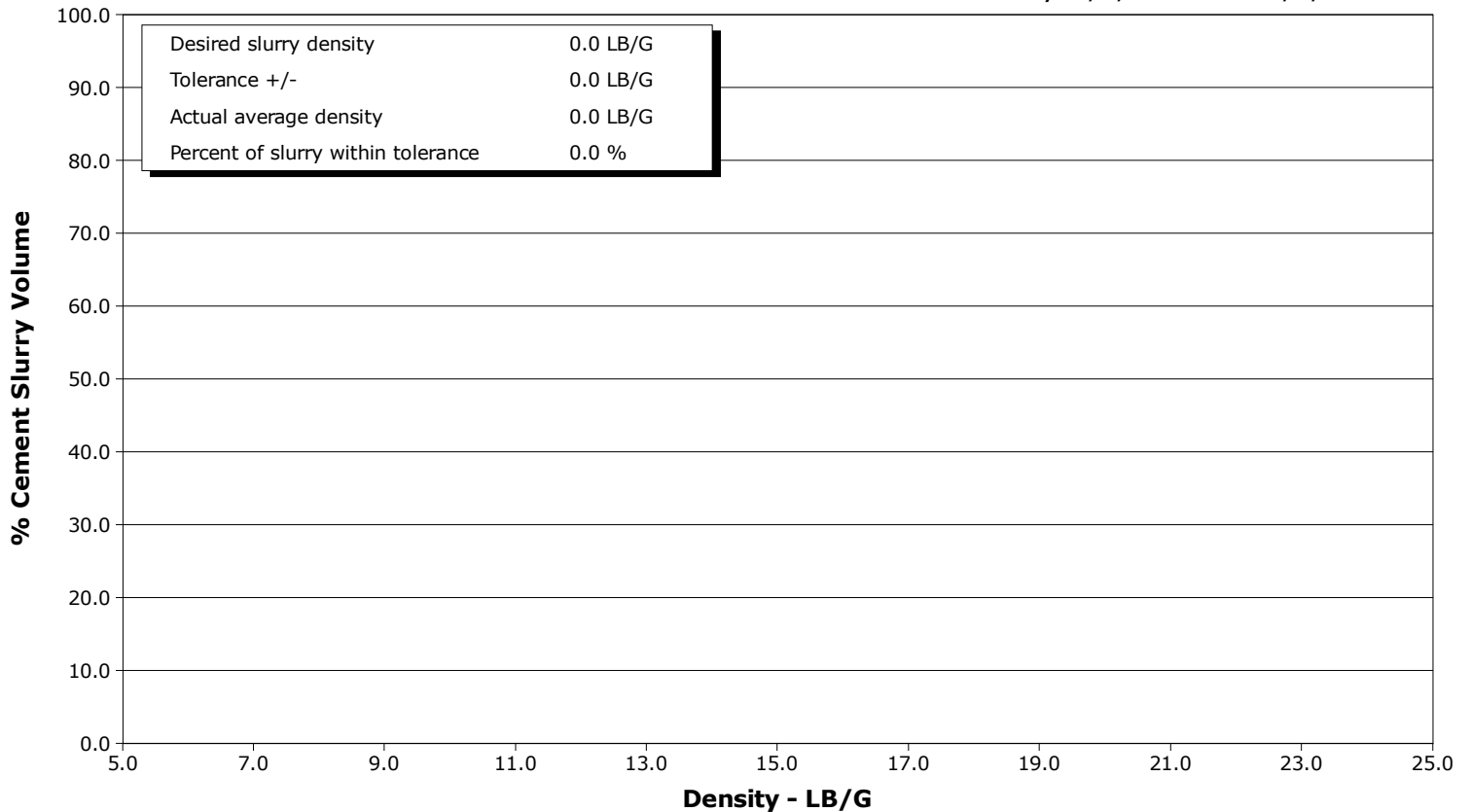
Well PROWANT
Field DJ
Engineer Albert S.
Country United States

Client ANADARKO
SIR No. 3198300
Job Type PRODUCTION
Job Date 11-24-2020

Lead Slurry - 11/24/2020 12:20:33 to 11/24/2020 13:07:00



Tail Slurry - 11/24/2020 13:15:00 to 11/24/2020 14:18:00



				Customer ANADARKO			Job Number 3198300		
Well PROWANT 18-10HZ		Location (legal) 18-10HZ		Schlumberger Location Cheyenne			Job Start Nov/24/2020		
Field DJ		Formation Name/Type		Deviation deg	Bit Size in		Well MD 20645.0 ft		Well TVD 7159.0 ft
County WELD		State/Province Colorado		BHP psi	BHST 230 degF		BHCT 229 degF		Pore Press. Gradient lb/gal
Well Master 05-123-50765		API/UWI 065980035							
Rig Name P 564	Drilled For Oil & Gas		Service Via Land	Casing/Liner					
	Depth, ft	Size, in	Weight, lb/ft	Grade		Thread			
Offshore Zone N/A	Well Class New		Well Type Exploration	1897.0	9.6	36.0		110	8RD
	20634.0	5.5	17.0		110	8RD			
Drilling Fluid Type LT OBM		Max. Density lb/gal	Plastic Viscosity cP	Tubing/Drill Pipe					
	T/D	Depth, ft	Size, in	Weight, lb/ft		Grade		Thread	
Service Line Cementing	Job Type PRODUCTION								
Max. Allowed Tub. Press psi	Max. Allowed Ann. Press psi		WH Connection	Perforations/Open Hole					
	Top, ft	Bottom, ft	shot/ft	No. of Shots		Total Interval			
Service Instructions	ft	ft				ft			
	ft	ft				Diameter		in	
	ft	ft							
Treat Down Casing		Displacement 478.4 bbl		Packer Type		Packer Depth ft			
Tubing Vol. bbl		Casing Vol. 478.4 bbl		Annular Vol. bbl		Openhole Vol. bbl			
Casing/Tubing Secured <input type="checkbox"/>	1 Hole Vol. Circulated prior to Cement <input checked="" type="checkbox"/>		Casing Tools			Squeeze Job			
Lift Pressure 2600 psi	Shoe Type Guide		Squeeze Type						
Pipe Rotated <input type="checkbox"/>	Pipe Reciprocated <input type="checkbox"/>		Shoe Depth 20621.0 ft	Tool Type					
No. Centralizers	Top Plugs	Bottom Plugs	Stage Tool Type		Tool Depth		ft		
Cement Head Type Double	Stage Tool Depth		ft		Tail Pipe Size		in		
Job Scheduled For Nov/24/2020 03:00	Arrived on Location Nov/24/2020 02:00		Leave Location Nov/24/2020 17:30	Collar Type Float		Tail Pipe Depth		ft	
	Collar Depth 20621.0 ft		Sqz. Total Vol. bbl						
Date	Time 24-hr clock	Treating Pressure PSI	Flow Rate B/M	Density LB/G	Message				
11/24/2020	11:08:43	15	0.0	8.33	Started Acquisition				
11/24/2020	11:10:13	15	0.0	8.33					
11/24/2020	11:11:43	15	0.0	8.33					
11/24/2020	11:13:13	15	0.0	8.33					
11/24/2020	11:14:43	15	0.0	8.33					
11/24/2020	11:16:13	16	0.0	8.33					
11/24/2020	11:17:43	15	0.0	8.33					
11/24/2020	11:19:13	191	1.2	8.35					
11/24/2020	11:20:43	137	0.0	8.36					
11/24/2020	11:22:13	2304	0.0	8.36					
11/24/2020	11:23:43	6559	0.0	8.36					
11/24/2020	11:25:13	7087	0.0	8.36					
11/24/2020	11:26:43	17	0.0	8.36					
11/24/2020	11:28:13	202	0.7	8.36					
11/24/2020	11:29:43	2467	0.0	8.37					
11/24/2020	11:31:13	7499	0.0	8.36					
11/24/2020	11:32:43	7444	0.0	8.36					
11/24/2020	11:34:00	206	0.0	8.36	Fill lines with 5 bbls of fresh water				
11/24/2020	11:34:13	194	0.0	8.36					
11/24/2020	11:35:43	206	0.0	8.36					
11/24/2020	11:37:13	207	0.0	8.36					

Well		Field	Job Start	Customer	Job Number
PROWANT 18-10HZ		DJ	Nov/24/2020	ANADARKO	3198300
Date	Time 24-hr clock	Treating Pressure PSI	Flow Rate B/M	Density LB/G	Message
11/24/2020	11:40:13	986	4.2	10.82	
11/24/2020	11:41:43	705	4.3	10.82	
11/24/2020	11:43:13	663	6.3	10.86	
11/24/2020	11:44:43	629	6.2	10.90	
11/24/2020	11:46:00	626	6.3	10.88	Pressure Test Lines
11/24/2020	11:46:13	629	6.3	10.89	
11/24/2020	11:47:00	606	6.3	10.91	low tst to 1000 psi
11/24/2020	11:47:43	568	6.4	10.86	
11/24/2020	11:49:13	583	6.3	11.08	
11/24/2020	11:50:00	543	6.3	11.14	High test to 7500 psi
11/24/2020	11:50:43	514	6.4	11.03	
11/24/2020	11:52:13	744	8.3	10.99	
11/24/2020	11:53:43	706	8.3	10.94	
11/24/2020	11:54:00	749	8.3	10.91	Start Pumping Spacer
11/24/2020	11:55:13	669	8.3	10.90	
11/24/2020	11:56:43	620	8.3	10.96	
11/24/2020	11:58:13	32	0.0	11.42	
11/24/2020	11:59:43	33	0.0	11.42	
11/24/2020	12:00:00	32	0.0	11.42	Pump 60 bbls of prime scrub @10.9#
11/24/2020	12:01:13	33	0.0	10.97	
11/24/2020	12:02:43	415	4.4	11.96	
11/24/2020	12:04:13	420	4.4	12.08	
11/24/2020	12:05:00	441	4.4	12.07	pump 59 bbls of mud push @10.9#
11/24/2020	12:05:43	758	6.3	12.05	
11/24/2020	12:07:13	748	6.2	11.95	
11/24/2020	12:08:43	751	6.3	11.93	
11/24/2020	12:10:00	725	6.3	11.94	top of spacer at surface
11/24/2020	12:10:13	759	6.3	11.94	
11/24/2020	12:11:43	759	6.3	11.93	
11/24/2020	12:13:13	756	6.3	11.91	
11/24/2020	12:14:00	738	6.3	11.91	End Spacer
11/24/2020	12:16:00	775	6.3	11.90	drop bottom plug
11/24/2020	12:16:13	763	6.3	11.89	
11/24/2020	12:17:43	778	6.3	11.91	
11/24/2020	12:19:13	767	6.3	11.96	
11/24/2020	12:20:33	421	4.4	11.99	Start Mixing Lead Slurry
11/24/2020	12:20:43	419	4.4	11.99	
11/24/2020	12:22:13	454	4.4	12.06	
11/24/2020	12:23:43	457	4.4	12.01	
11/24/2020	12:25:13	753	6.3	11.93	
11/24/2020	12:26:43	762	6.3	11.87	
11/24/2020	12:28:13	723	6.3	11.85	
11/24/2020	12:29:43	743	6.3	11.94	
11/24/2020	12:30:00	808	6.3	12.01	Mix and pump 924 sks@12# 299.4 bbls
11/24/2020	12:31:13	306	3.2	11.94	
11/24/2020	12:32:43	435	4.4	11.98	
11/24/2020	12:34:13	781	6.3	12.00	
11/24/2020	12:35:43	1147	8.1	12.00	
11/24/2020	12:37:13	1180	8.2	12.02	
11/24/2020	12:38:43	1114	8.1	12.00	
11/24/2020	12:40:00	1156	8.1	11.99	yield=1.82 wr=7.95
11/24/2020	12:40:13	1124	8.1	12.00	
11/24/2020	12:41:43	1130	8.1	11.98	
11/24/2020	12:43:13	756	6.3	11.94	

Well		Field	Job Start	Customer	Job Number
PROWANT 18-10HZ		DJ	Nov/24/2020	ANADARKO	3198300
Date	Time 24-hr clock	Treating Pressure PSI	Flow Rate B/M	Density LB/G	Message
11/24/2020	12:46:13	765	6.3	12.01	
11/24/2020	12:47:43	783	6.3	11.99	
11/24/2020	12:49:13	801	6.3	12.09	
11/24/2020	12:50:43	765	6.3	11.91	
11/24/2020	12:52:13	412	4.4	11.91	
11/24/2020	12:53:43	39	0.0	12.08	
11/24/2020	12:55:13	39	0.0	12.13	
11/24/2020	12:56:43	41	0.0	11.97	
11/24/2020	12:58:13	381	4.5	13.38	
11/24/2020	12:59:43	647	6.4	13.46	
11/24/2020	13:00:00	629	6.4	13.48	Top of lead at 2500 ft
11/24/2020	13:01:13	620	6.3	13.52	
11/24/2020	13:02:43	626	6.4	13.56	
11/24/2020	13:04:13	851	8.2	13.51	
11/24/2020	13:05:43	851	8.2	13.54	
11/24/2020	13:07:00	870	8.2	13.51	End Lead Slurry
11/24/2020	13:07:13	834	8.2	13.52	
11/24/2020	13:08:43	874	8.3	13.58	
11/24/2020	13:10:13	869	8.2	13.55	
11/24/2020	13:11:43	847	8.2	13.60	
11/24/2020	13:13:13	828	8.2	13.55	
11/24/2020	13:14:43	827	8.2	13.54	
11/24/2020	13:15:00	833	8.3	13.55	Start Mixing Tail Slurry
11/24/2020	13:16:13	839	8.2	13.56	
11/24/2020	13:17:43	826	8.2	13.52	
11/24/2020	13:19:13	853	8.2	13.65	
11/24/2020	13:20:43	832	8.2	13.54	
11/24/2020	13:22:13	568	6.7	13.43	
11/24/2020	13:23:43	579	6.4	13.48	
11/24/2020	13:25:13	794	8.2	13.45	
11/24/2020	13:26:43	835	8.2	13.62	
11/24/2020	13:28:13	824	8.2	13.61	
11/24/2020	13:29:43	847	8.2	13.60	
11/24/2020	13:30:00	825	8.2	13.59	pump 1685 sks of tail @13.5# 492 bbls
11/24/2020	13:31:13	855	8.2	13.57	
11/24/2020	13:32:43	837	8.2	13.53	
11/24/2020	13:34:13	808	8.2	13.55	
11/24/2020	13:35:43	820	8.2	13.57	
11/24/2020	13:37:13	825	8.2	13.56	
11/24/2020	13:38:43	844	8.2	13.56	
11/24/2020	13:40:13	846	8.2	13.55	
11/24/2020	13:41:43	846	8.2	13.56	
11/24/2020	13:43:13	810	8.2	13.56	
11/24/2020	13:44:43	779	8.3	13.41	
11/24/2020	13:45:00	852	8.2	13.56	yield =1.64 wr=7.95
11/24/2020	13:46:13	566	6.4	13.43	
11/24/2020	13:47:43	564	6.4	13.42	
11/24/2020	13:49:13	564	6.4	13.48	
11/24/2020	13:50:43	778	6.4	13.55	
11/24/2020	13:52:13	823	8.2	13.52	
11/24/2020	13:53:43	839	8.2	13.61	
11/24/2020	13:55:13	827	8.2	13.54	
11/24/2020	13:56:43	581	6.4	13.55	
11/24/2020	13:58:13	580	6.4	13.49	

Well		Field	Job Start	Customer	Job Number
PROWANT 18-10HZ		DJ	Nov/24/2020	ANADARKO	3198300
Date	Time 24-hr clock	Treating Pressure PSI	Flow Rate B/M	Density LB/G	Message
11/24/2020	14:00:00	573	6.3	13.54	Top of tail @9000 ft
11/24/2020	14:01:13	568	6.4	13.47	
11/24/2020	14:02:43	47	0.0	13.50	
11/24/2020	14:04:13	51	0.0	13.56	
11/24/2020	14:05:43	51	0.0	11.80	
11/24/2020	14:07:13	103	0.8	9.12	
11/24/2020	14:08:43	96	2.2	9.10	
11/24/2020	14:10:13	247	4.6	9.06	
11/24/2020	14:11:43	37	0.4	8.53	
11/24/2020	14:13:13	68	1.9	8.38	
11/24/2020	14:14:43	32	0.0	8.38	
11/24/2020	14:16:13	36	0.7	8.33	
11/24/2020	14:17:43	437	8.2	8.43	
11/24/2020	14:18:00	443	8.3	8.42	End Tail Slurry
11/24/2020	14:19:13	435	8.3	8.41	
11/24/2020	14:20:43	440	8.3	8.38	
11/24/2020	14:21:53	436	8.3	8.38	wash to the pit
11/24/2020	14:23:43	1124	8.2	8.38	
11/24/2020	14:25:00	1217	8.2	8.38	DROP TOP PLUG
11/24/2020	14:25:13	1248	8.2	8.38	
11/24/2020	14:26:43	1362	8.2	8.38	
11/24/2020	14:28:13	1471	8.2	8.37	
11/24/2020	14:29:00	1571	8.2	8.37	Start Displacement
11/24/2020	14:29:43	1613	8.2	8.37	
11/24/2020	14:31:13	1764	8.1	8.37	
11/24/2020	14:32:43	1923	8.2	8.37	
11/24/2020	14:34:00	2027	8.1	8.37	Displace20 bbls of sugar water
11/24/2020	14:34:13	2071	8.1	8.37	
11/24/2020	14:35:43	2217	8.0	8.37	
11/24/2020	14:37:13	2281	7.9	8.37	
11/24/2020	14:38:43	2371	7.8	8.37	
11/24/2020	14:40:13	2403	7.7	8.37	
11/24/2020	14:41:43	2416	7.7	8.37	
11/24/2020	14:43:13	2407	7.7	8.37	
11/24/2020	14:44:43	2459	7.7	8.37	
11/24/2020	14:46:13	2489	7.6	8.37	
11/24/2020	14:47:43	2487	7.6	8.37	
11/24/2020	14:49:13	2515	7.5	8.37	
11/24/2020	14:50:43	2579	7.5	8.37	
11/24/2020	14:52:13	2577	7.5	8.37	
11/24/2020	14:53:43	2601	7.5	8.37	
11/24/2020	14:55:13	2640	7.4	8.37	
11/24/2020	14:56:43	2638	7.4	8.37	
11/24/2020	14:58:13	2631	7.2	8.37	
11/24/2020	14:59:43	2689	7.3	8.37	
11/24/2020	15:00:00	2683	7.2	8.37	Displace 458.5 bbls of biocide water
11/24/2020	15:01:13	2734	7.2	8.37	
11/24/2020	15:02:43	2738	7.2	8.37	
11/24/2020	15:04:13	2773	7.2	8.37	
11/24/2020	15:05:43	2806	7.2	8.37	
11/24/2020	15:07:13	2788	7.1	8.37	
11/24/2020	15:08:43	2806	7.1	8.37	
11/24/2020	15:10:13	2853	7.1	8.37	
11/24/2020	15:11:43	2834	7.1	8.38	

Well		Field		Job Start		Customer		Job Number	
PROWANT 18-10HZ		DJ		Nov/24/2020		ANADARKO		3198300	
Date	Time 24-hr clock	Treating Pressure PSI	Flow Rate B/M	Density LB/G	Message				
11/24/2020	15:14:43	2699	6.2	8.37					
11/24/2020	15:16:13	2687	6.2	8.37					
11/24/2020	15:17:43	2691	6.2	8.37					
11/24/2020	15:19:13	2715	6.3	8.37					
11/24/2020	15:20:43	2335	4.4	8.38					
11/24/2020	15:22:13	1956	2.2	8.37					
11/24/2020	15:23:43	3030	0.0	8.38					
11/24/2020	15:25:13	3042	0.0	8.38					
11/24/2020	15:26:43	3070	0.0	8.38					
11/24/2020	15:28:13	3098	0.0	8.38					
11/24/2020	15:29:43	3116	0.0	8.38					
11/24/2020	15:31:13	3139	0.0	8.38					
11/24/2020	15:32:43	3158	0.0	8.38					
11/24/2020	15:34:13	3181	0.0	8.39					
11/24/2020	15:35:43	3202	0.0	8.38					
11/24/2020	15:37:13	3224	0.0	8.38					
11/24/2020	15:38:43	3244	0.0	8.38					
11/24/2020	15:40:00	2586	2.2	8.38	Bump the plug 3050 psi				
11/24/2020	15:40:13	2370	2.2	8.38					
11/24/2020	15:41:00	2129	2.2	8.38	casing test 3100 psi for 15 minutes				
11/24/2020	15:41:43	2105	2.2	8.38					
11/24/2020	15:43:13	35	0.0	8.38					
11/24/2020	15:44:43	104	0.0	8.38					
11/24/2020	15:46:13	32	0.0	8.38					
11/24/2020	15:47:43	54	0.3	3.10					
11/24/2020	15:49:13	58	0.0	0.01					
11/24/2020	15:50:43	56	0.0	0.01					
11/24/2020	15:52:13	52	0.0	0.01					
11/24/2020	15:53:43	59	0.0	0.01					
11/24/2020	15:55:13	58	0.0	0.01					
11/24/2020	15:56:43	55	0.0	0.01					
11/24/2020	15:58:13	58	0.0	0.01					
11/24/2020	15:59:43	53	0.0	0.01					

Post Job Summary

Average Pump Rates, bbl/min				Volume of Fluid Injected, bbl			
Slurry	N2	Mud	Maximum Rate	Total Slurry	Mud	Spacer	N2
6.7			12.2	791.0	0.0	120.0	
Treating Pressure Summary, psi				Breakdown Fluid			
Maximum	Final	Average	Bump Plug to	Breakdown	Type	Volume	Density
4300	3100	1202	3100		FreshWater	478.5 bbl	8.34 lb/gal
Avg. N2 Percent	Designed Slurry Volume	Displacement	Mix Water Temp	Cement Circulated to Surface?	Volume		
%	0.0 bbl	478.5 bbl	70 degF	<input type="checkbox"/>	bbl		
Customer or Authorized Representative				Schlumberger Supervisor		Circulation Lost	
FRANK				Albert S.		<input type="checkbox"/>	
						Job Completed <input checked="" type="checkbox"/>	
						-	