

STATE OF COLORADO
GAS CONSERVATION COMMISSION
DEPARTMENT OF NATURAL RESOURCES

Licked up.

APPLICATION
FOR PERMIT TO DRILL, DEEPEN, OR RE-ENTER AND OPERATE

1a. TYPE OF WORK

DRILL ☒DEEPEN ☐RE-ENTER ☐

b. TYPE OF WELL

OIL
WELL ☐GAS
WELL ☒

OTHER

SINGLE
ZONE ☒MULTIPLE
ZONE ☐

2. NAME OF OPERATOR

G. J. Morgan / Carey Resources, Inc.

PHONE NO.
(303) 291-9655
(516) 487-0140

3. ADDRESS OF OPERATOR

999 18th St., Ste. 1000 Denver, CO 80202 / Suite 307
310 East Shore Road
Great Neck, New York 11023

4. LOCATION OF WELL (Report location clearly and in accordance with any State requirements.)

At surface

Lot 5 (NW 1/4 NW 1/4) of Sec. 19, T8N-R92W Moffat County,

At proposed prod. zone

Same

N 1/2 NW NW Colorado (377' FNL + 487' FWL)

14. DISTANCE IN MILES AND DIRECTION FROM NEAREST TOWN OR POST OFFICE

18 miles NW of Craig, Colo.

15. DISTANCE FROM PROPOSED LOCATION TO NEAREST PROPERTY OR LEASE LINE, FT.
(Also to nearest drilg. line, if any)

377'

16. NO. OF ACRES IN LEASE*

315.48

17. NO. OF ACRES AND/OR DRILLING UNIT ASSIGNED TO THIS WELL

NW 1/4 of Sec. 19, T8N-R92W and NE 1/4 of Sec. 24
T8N-R93W

18. DISTANCE FROM PROPOSED LOCATION TO NEAREST WELL, DRILLING, COMPLETED, OR APPLIED FOR, ON THIS LEASE, FT.

N/A

19. PROPOSED DEPTH

5500'

20. ROTARY OR CABLE TOOLS

Rotary

21. ELEVATIONS (Show whether DF, RT, GR, etc.)

6715' GR

MOVED

22. APPROX. DATE WORK WILL START

October 5, 1984

23.

PROPOSED CASING AND CEMENTING PROGRAM

SIZE OF HOLE	SIZE OF CASING	WEIGHT PER FOOT	SETTING DEPTH	QUANTITY OF CEMENT
12 - 1/4"	9 - 5/8"	36 #	300'	cement to surface, 100% excess
7 - 7/8"	5 - 1/2"	15.5 #	5500'	cement to surface, 25% excess

24. IS SURFACE OWNER A PARTY TO LEASING AGREEMENT? YES ☒ NO ☐

If NO, surface bond must be on file.

* DESCRIBE LEASE T8N-R92W: Sec. 19: Lot 5 (NW 1/4 NW 1/4); T8N-R93W: Sec. 24: N 1/2 NE 1/4, SW 1/4 NE 1/4, N 1/2 SE 1/4, SW 1/4 SE 1/4, NE 1/4 SW 1/4

PROPOSED PROGRAM:

1) Drill 12-1/4" hole to 300'. Run + cement 9-5/8" casing to surface. Install + test BOP.

2) Install mud logger. Drill 7-7/8" hole to TD of 5500' through Iles Formation of Mesaverde Group.

3) DST's are contingent. Run electric logs.

4) Based on results, complete or abandon. If complete, run + cement 5 1/2" casing; perforate + stimulate as needed. If abandon, cement plugs will be set according to instructions from Colorado O. & Gas Conservation Commission.

ATTACHED: Consent from Texas Gas Exploration Co. (the only offsetting lease owner less than 600' except for Applicants herein).

24.

SIGNED

G. J. Morgan

TITLE

Designated Agent for Carey Resources, Inc.

Independent Operator

DATE

October 5, 1984

(This space for Federal or State Office use)

PERMIT NO.

84-1458

APPROVAL DATE

OCT 9 1984

EXPIRATION DATE

FEB 6 '85

APPROVED BY

William Smith

TITLE

DIRECTOR

O & G Cons. Comm.

DATE

OCT 9 1984

CONDITIONS OF APPROVAL, IF ANY:



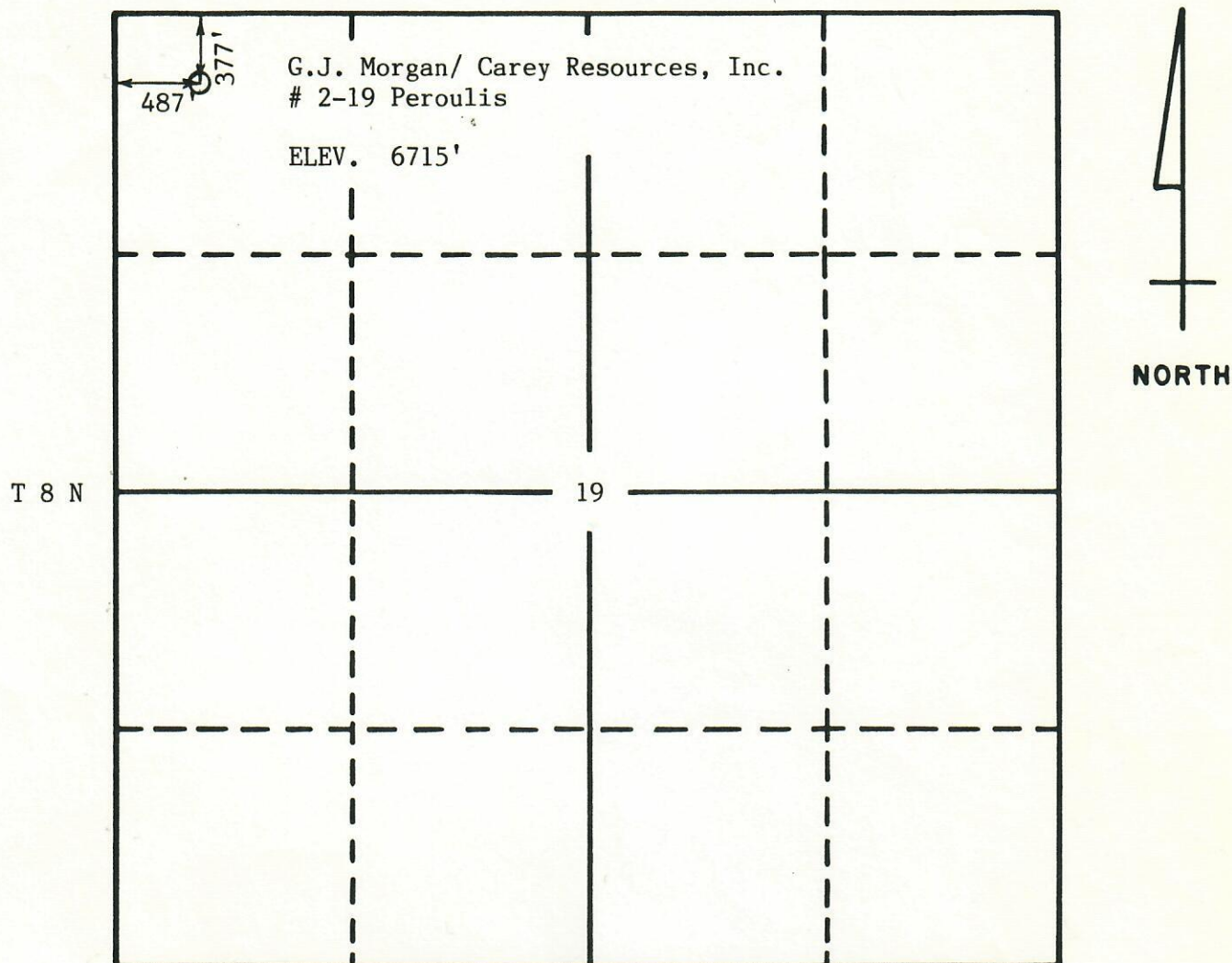
See number 00263986

A.P.I. NUMBER

05 081 6600

5

R 92 W



1"=1000'

Flatirons Surveying, Inc., in accordance with a request from G.J. Morgan/Carey Resources, Inc., has determined the location of the # 2-19 Peroulis to be 377' FNL and 487' FWL, in the NW 1/4 of the NW 1/4 of Section 19, T 8 N, R 92 W, Sixth Principal Meridian, Moffat County, Colorado.

Surveyor's Certificate

I, John Hall, a R.L.S. in the State of Colorado, do hereby certify that this survey was made under my direct supervision and that this plat represents said survey.

84-2348 A

Sept. 30, 1984



FLATIRONS SURVEYING
1800 30TH ST., STE. 219
BOULDER, CO 80301
(303) 443-7001