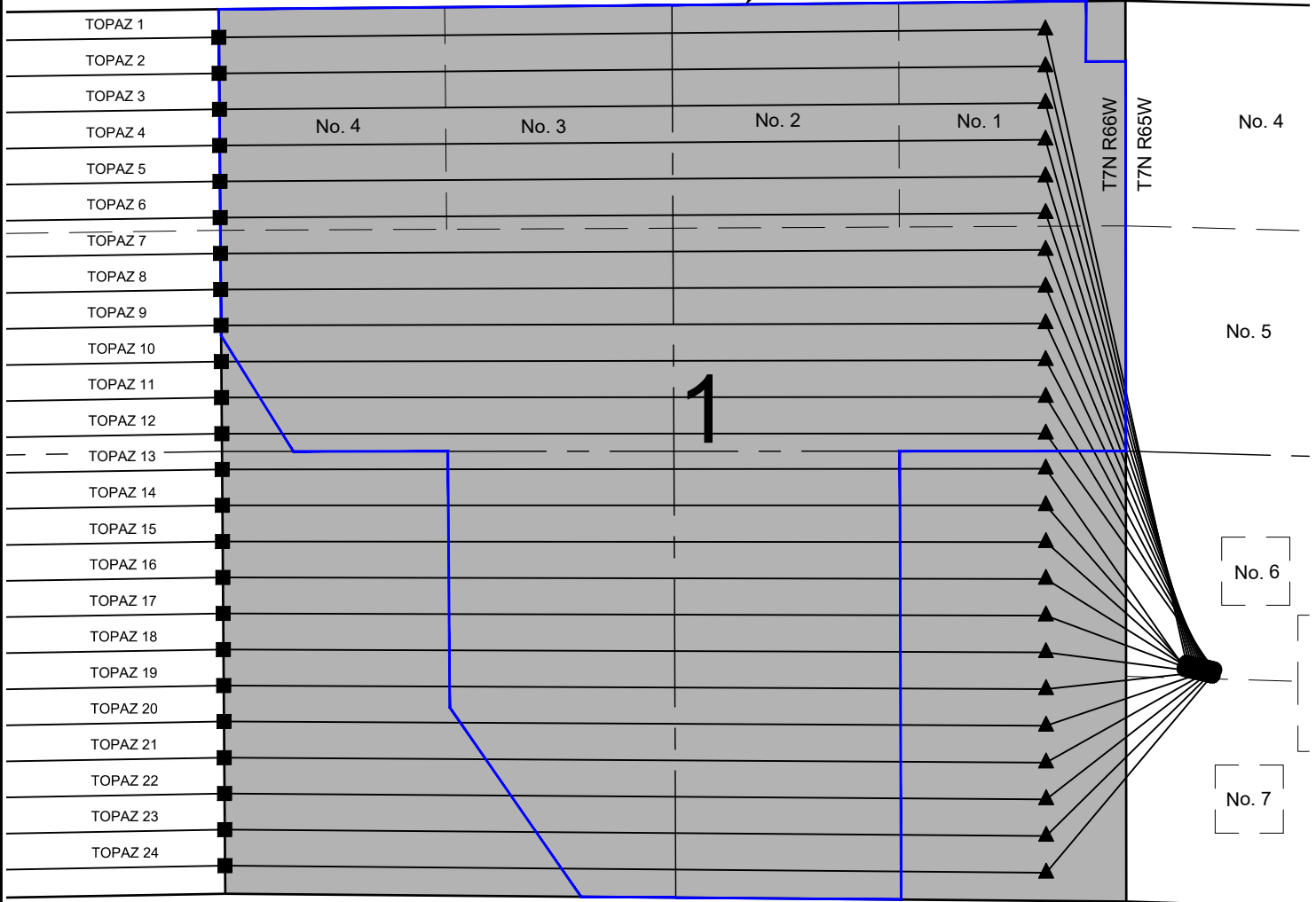


# TOPAZ 6-I PAD LEASE DRAWING

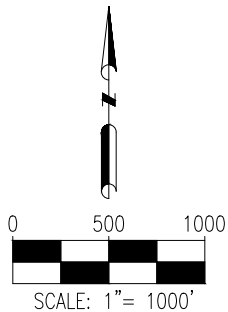
CITY OF THORNTON LEASE #13/50  
(463.9 ACRES)



## NOTES:

TOPAZ 1 TO BE AT 1409' FSL & 355' FWL.  
BOTTOM HOLE AT 165' FNL & 470' FWL, SEC. 2, T7N, R66W.  
TOPAZ 2 TO BE AT 1406' FSL & 369' FWL.  
BOTTOM HOLE AT 378' FNL & 470' FWL, SEC. 2, T7N, R66W.  
TOPAZ 3 TO BE AT 1403' FSL & 384' FWL.  
BOTTOM HOLE AT 590' FNL & 470' FWL, SEC. 2, T7N, R66W.  
TOPAZ 4 TO BE AT 1400' FSL & 399' FWL.  
BOTTOM HOLE AT 803' FNL & 470' FWL, SEC. 2, T7N, R66W.  
TOPAZ 5 TO BE AT 1397' FSL & 413' FWL.  
BOTTOM HOLE AT 1016' FNL & 470' FWL, SEC. 2, T7N, R66W.  
TOPAZ 6 TO BE AT 1394' FSL & 428' FWL.  
BOTTOM HOLE AT 1229' FNL & 470' FWL, SEC. 2, T7N, R66W.  
TOPAZ 7 TO BE AT 1391' FSL & 442' FWL.  
BOTTOM HOLE AT 1441' FNL & 470' FWL, SEC. 2, T7N, R66W.  
TOPAZ 8 TO BE AT 1388' FSL & 457' FWL.  
BOTTOM HOLE AT 1654' FNL & 470' FWL, SEC. 2, T7N, R66W.  
TOPAZ 9 TO BE AT 1385' FSL & 472' FWL.  
BOTTOM HOLE AT 1867' FNL & 470' FWL, SEC. 2, T7N, R66W.  
TOPAZ 10 TO BE AT 1382' FSL & 486' FWL.  
BOTTOM HOLE AT 2079' FNL & 470' FWL, SEC. 2, T7N, R66W.  
TOPAZ 11 TO BE AT 1379' FSL & 501' FWL.  
BOTTOM HOLE AT 2292' FNL & 470' FWL, SEC. 2, T7N, R66W.  
TOPAZ 12 TO BE AT 1376' FSL & 515' FWL.  
BOTTOM HOLE AT 2505' FNL & 470' FWL, SEC. 2, T7N, R66W.

TOPAZ 13 TO BE AT 1377' FSL & 345' FWL.  
BOTTOM HOLE AT 2505' FSL & 470' FWL, SEC. 2, T7N, R66W.  
TOPAZ 14 TO BE AT 1374' FSL & 360' FWL.  
BOTTOM HOLE AT 2292' FSL & 470' FWL, SEC. 2, T7N, R66W.  
TOPAZ 15 TO BE AT 1371' FSL & 374' FWL.  
BOTTOM HOLE AT 2079' FSL & 470' FWL, SEC. 2, T7N, R66W.  
TOPAZ 16 TO BE AT 1368' FSL & 389' FWL.  
BOTTOM HOLE AT 1867' FSL & 470' FWL, SEC. 2, T7N, R66W.  
TOPAZ 17 TO BE AT 1365' FSL & 403' FWL.  
BOTTOM HOLE AT 1654' FSL & 470' FWL, SEC. 2, T7N, R66W.  
TOPAZ 18 TO BE AT 1362' FSL & 418' FWL.  
BOTTOM HOLE AT 1441' FSL & 470' FWL, SEC. 2, T7N, R66W.  
TOPAZ 19 TO BE AT 1359' FSL & 433' FWL.  
BOTTOM HOLE AT 1228' FSL & 470' FWL, SEC. 2, T7N, R66W.  
TOPAZ 20 TO BE AT 1356' FSL & 447' FWL.  
BOTTOM HOLE AT 1016' FSL & 470' FWL, SEC. 2, T7N, R66W.  
TOPAZ 21 TO BE AT 1353' FSL & 462' FWL.  
BOTTOM HOLE AT 803' FSL & 470' FWL, SEC. 2, T7N, R66W.  
TOPAZ 22 TO BE AT 1350' FSL & 476' FWL.  
BOTTOM HOLE AT 590' FSL & 470' FWL, SEC. 2, T7N, R66W.  
TOPAZ 23 TO BE AT 1347' FSL & 491' FWL.  
BOTTOM HOLE AT 378' FSL & 470' FWL, SEC. 2, T7N, R66W.  
TOPAZ 24 TO BE AT 1344' FSL & 506' FWL.  
BOTTOM HOLE AT 165' FSL & 470' FWL, SEC. 2, T7N, R66W.



## LEGEND


- = PROPOSED WELL
- ▲ = LANDING POINT
- = LEASE LINES
- = VERTEX POINT

DISCLAIMER:  
THIS PLOT DOES NOT REPRESENT A MONUMENTED LAND SURVEY AND SHOULD NOT BE  
RELIED UPON TO DETERMINE BOUNDARY LINES, PROPERTY OWNERSHIP OR OTHER  
PROPERTY INTERESTS. PARCEL LINES, IF DEPICTED HAVE NOT BEEN FIELD VERIFIED AND  
MAY BE BASED UPON PUBLICLY AVAILABLE DATA THAT ALSO HAS NOT BEEN  
INDEPENDENTLY VERIFIED.



FIELD DATE:  
08-29-19  
DRAWING DATE:  
02-19-21  
BY:  
CSG  
CHECKED:  
IJM

SITE NAME:  
TOPAZ 6-I PAD  
SURFACE LOCATION:  
LOT 6 SEC. 6, T7N, R65W, 6TH P.M.  
WELD COUNTY, COLORADO

PREPARED FOR:  
 **BAYSWATER**  
EXPLORATION & PRODUCTION, LLC