

Bayswater Exploration & Production, LLC

DJ Basin

Topaz Pad 6-I HZ Pad

TOPAZ 08

Wellbore #1

Plan: Design #1

Standard Planning Report

25 November, 2020



Pad Name: Topaz Pad 6-I HZ Pad
Well Name: TOPAZ 08
Ground Level: 4946.0
SHL Latitude: 40° 36' 3.805 N
SHL Longitude: 104° 42' 51.131 W

SECTION DETAILS

Sec	MD	Inc	Azi	TVD	+N/-S	+E/-W	Dleg	TFace	VSect	Target
1	0.0	0.00	0.00	0.0	0.0	0.0	0.00	0.00	0.0	
2	1500.0	0.00	0.00	1500.0	0.0	0.0	0.00	0.00	0.0	
3	2695.1	23.90	350.08	2660.8	242.0	-42.3	2.00	350.08	89.4	
4	7160.3	23.90	350.08	6743.0	2024.1	-354.1	0.00	0.00	747.7	
5	8024.7	90.24	269.43	7233.0	2233.6	-930.2	10.00	-81.34	1353.8	TOPAZ 8 LP
6	17678.4	90.24	269.43	7193.0	2136.8	-10583.3	0.00	0.00	10796.9	TOPAZ 8 PBHL

DESIGN TARGET DETAILS

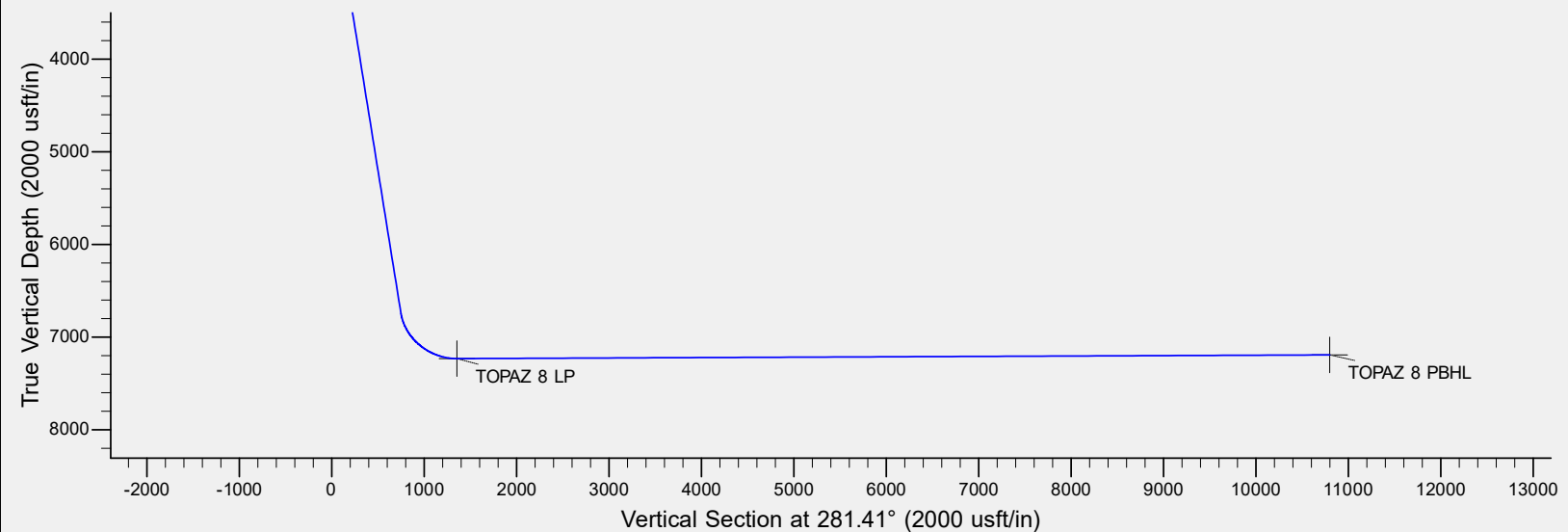
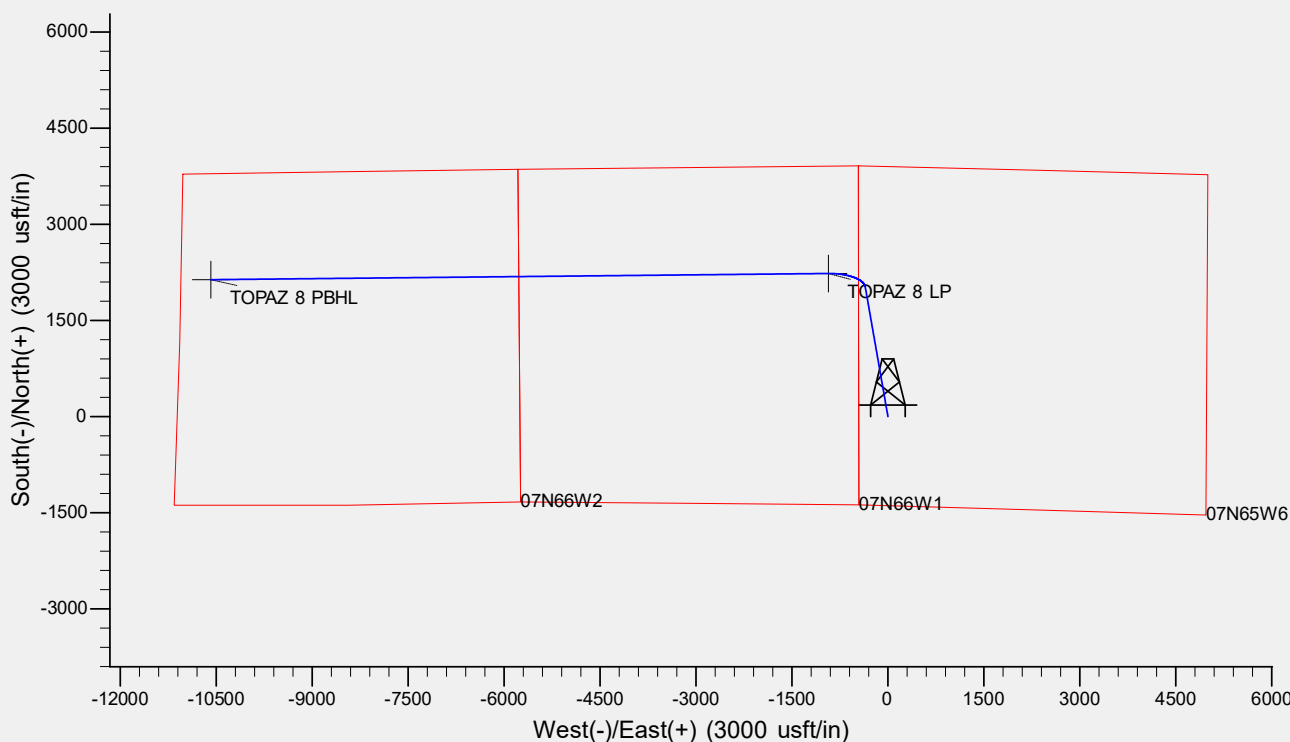
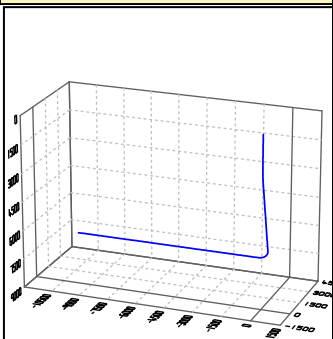
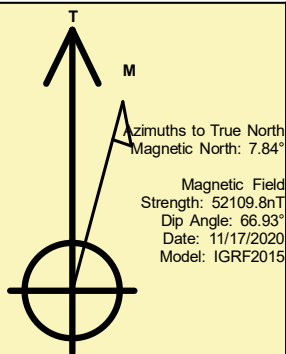
Name	TVD	+N/-S	+E/-W	Northing	Easting	Latitude	Longitude	Shape
TOPAZ 8 LP	7233.0	2233.6	-930.2	1464998.70	3217250.76	40° 36' 25.877 N	104° 43' 3.191 W	Point
TOPAZ 8 PBHL	- plan hits target center 7193.0	2136.8	-10583.3	1464816.33	3207598.85	40° 36' 24.898 N	104° 45' 8.348 W	Point
	- plan hits target center							

REFERENCE INFORMATION

Co-ordinate (N/E) Reference: Well TOPAZ 08, True North
Vertical (TVD) Reference: KB @ 4966.0usft (Original Well Elev)
Section (VS) Reference: Slot - (0.0N, 0.0E)
Measured Depth Reference: KB @ 4966.0usft (Original Well Elev)
Calculation Method: Minimum Curvature

CASING DETAILS

No casing data is available



Bayswater Exploration & Production LLC

Planning Report

Database:	edm	Local Co-ordinate Reference:	Well TOPAZ 08
Company:	Bayswater Exploration & Production, LLC	TVD Reference:	KB @ 4966.0usft (Original Well Elev)
Project:	DJ Basin	MD Reference:	KB @ 4966.0usft (Original Well Elev)
Site:	Topaz Pad 6-I HZ Pad	North Reference:	True
Well:	TOPAZ 08	Survey Calculation Method:	Minimum Curvature
Wellbore:	Wellbore #1		
Design:	Design #1		

Project	DJ Basin, DJ Basin		
Map System:	US State Plane 1983	System Datum:	Mean Sea Level
Geo Datum:	North American Datum 1983		
Map Zone:	Colorado Northern Zone		

Site	Topaz Pad 6-I HZ Pad					
Site Position:		Northing:	1,462,796.90 usft	Latitude:	40° 36' 4.046 N	
From:	Lat/Long	Easting:	3,218,098.27 usft	Longitude:	104° 42' 52.456 W	
Position Uncertainty:		0.0 usft	Slot Radius:	13-3/16 "	Grid Convergence:	0.51 °

Well	TOPAZ 08					
Well Position	+N/-S	-24.4 usft	Northing:	1,462,773.39 usft	Latitude:	40° 36' 3.805 N
	+E/-W	102.2 usft	Easting:	3,218,200.67 usft	Longitude:	104° 42' 51.131 W
Position Uncertainty		0.0 usft	Wellhead Elevation:		Ground Level:	4,946.0 usft

Wellbore	Wellbore #1				
Magnetics	Model Name	Sample Date	Declination (°)	Dip Angle (°)	Field Strength (nT)
	IGRF2015	11/17/2020	7.84	66.93	52,109.82734663

Design	Design #1			
Audit Notes:				
Version:	Phase:	PLAN	Tie On Depth:	0.0
Vertical Section:	Depth From (TVD) (usft)	+N/-S (usft)	+E/-W (usft)	Direction (°)
	0.0	0.0	0.0	281.41

Plan Survey Tool Program	Date	11/25/2020		
Depth From (usft)	Depth To (usft)	Survey (Wellbore)	Tool Name	Remarks
1	0.0	17,678.4	Design #1 (Wellbore #1)	MWD
				OWSG MWD - Standard

Plan Sections										
Measured Depth (usft)	Inclination (°)	Azimuth (°)	Vertical Depth (usft)	+N/-S (usft)	+E/-W (usft)	Dogleg Rate (°/100usft)	Build Rate (°/100usft)	Turn Rate (°/100usft)	TFO (°)	Target
0.0	0.00	0.00	0.0	0.0	0.0	0.00	0.00	0.00	0.00	
1,500.0	0.00	0.00	1,500.0	0.0	0.0	0.00	0.00	0.00	0.00	
2,695.1	23.90	350.08	2,660.8	242.0	-42.3	2.00	2.00	0.00	350.08	
7,160.3	23.90	350.08	6,743.0	2,024.1	-354.1	0.00	0.00	0.00	0.00	
8,024.7	90.24	269.43	7,233.0	2,233.6	-930.2	10.00	7.67	-9.33	-81.34	TOPAZ 8 LP
17,678.4	90.24	269.43	7,193.0	2,136.8	-10,583.3	0.00	0.00	0.00	0.00	TOPAZ 8 PBHL

Bayswater Exploration & Production LLC

Planning Report

Database:	edm	Local Co-ordinate Reference:	Well TOPAZ 08
Company:	Bayswater Exploration & Production, LLC	TVD Reference:	KB @ 4966.0usft (Original Well Elev)
Project:	DJ Basin	MD Reference:	KB @ 4966.0usft (Original Well Elev)
Site:	Topaz Pad 6-I HZ Pad	North Reference:	True
Well:	TOPAZ 08	Survey Calculation Method:	Minimum Curvature
Wellbore:	Wellbore #1		
Design:	Design #1		

Planned Survey									
Measured Depth (usft)	Inclination (°)	Azimuth (°)	Vertical Depth (usft)	+N/-S (usft)	+E/-W (usft)	Vertical Section (usft)	Dogleg Rate (°/100usft)	Build Rate (°/100usft)	Turn Rate (°/100usft)
0.0	0.00	0.00	0.0	0.0	0.0	0.0	0.00	0.00	0.00
100.0	0.00	0.00	100.0	0.0	0.0	0.0	0.00	0.00	0.00
200.0	0.00	0.00	200.0	0.0	0.0	0.0	0.00	0.00	0.00
300.0	0.00	0.00	300.0	0.0	0.0	0.0	0.00	0.00	0.00
400.0	0.00	0.00	400.0	0.0	0.0	0.0	0.00	0.00	0.00
500.0	0.00	0.00	500.0	0.0	0.0	0.0	0.00	0.00	0.00
600.0	0.00	0.00	600.0	0.0	0.0	0.0	0.00	0.00	0.00
700.0	0.00	0.00	700.0	0.0	0.0	0.0	0.00	0.00	0.00
800.0	0.00	0.00	800.0	0.0	0.0	0.0	0.00	0.00	0.00
900.0	0.00	0.00	900.0	0.0	0.0	0.0	0.00	0.00	0.00
1,000.0	0.00	0.00	1,000.0	0.0	0.0	0.0	0.00	0.00	0.00
1,100.0	0.00	0.00	1,100.0	0.0	0.0	0.0	0.00	0.00	0.00
1,200.0	0.00	0.00	1,200.0	0.0	0.0	0.0	0.00	0.00	0.00
1,300.0	0.00	0.00	1,300.0	0.0	0.0	0.0	0.00	0.00	0.00
1,400.0	0.00	0.00	1,400.0	0.0	0.0	0.0	0.00	0.00	0.00
1,500.0	0.00	0.00	1,500.0	0.0	0.0	0.0	0.00	0.00	0.00
1,600.0	2.00	350.08	1,600.0	1.7	-0.3	0.6	2.00	2.00	0.00
1,700.0	4.00	350.08	1,699.8	6.9	-1.2	2.5	2.00	2.00	0.00
1,800.0	6.00	350.08	1,799.5	15.5	-2.7	5.7	2.00	2.00	0.00
1,900.0	8.00	350.08	1,898.7	27.5	-4.8	10.1	2.00	2.00	0.00
2,000.0	10.00	350.08	1,997.5	42.9	-7.5	15.8	2.00	2.00	0.00
2,100.0	12.00	350.08	2,095.6	61.7	-10.8	22.8	2.00	2.00	0.00
2,200.0	14.00	350.08	2,193.1	83.8	-14.7	31.0	2.00	2.00	0.00
2,300.0	16.00	350.08	2,289.6	109.3	-19.1	40.4	2.00	2.00	0.00
2,400.0	18.00	350.08	2,385.3	138.1	-24.2	51.0	2.00	2.00	0.00
2,500.0	20.00	350.08	2,479.8	170.2	-29.8	62.9	2.00	2.00	0.00
2,600.0	22.00	350.08	2,573.2	205.5	-36.0	75.9	2.00	2.00	0.00
2,695.1	23.90	350.08	2,660.8	242.0	-42.3	89.4	2.00	2.00	0.00
2,700.0	23.90	350.08	2,665.2	244.0	-42.7	90.1	0.00	0.00	0.00
2,800.0	23.90	350.08	2,756.6	283.9	-49.7	104.9	0.00	0.00	0.00
2,900.0	23.90	350.08	2,848.1	323.8	-56.6	119.6	0.00	0.00	0.00
3,000.0	23.90	350.08	2,939.5	363.7	-63.6	134.4	0.00	0.00	0.00
3,100.0	23.90	350.08	3,030.9	403.6	-70.6	149.1	0.00	0.00	0.00
3,200.0	23.90	350.08	3,122.3	443.5	-77.6	163.8	0.00	0.00	0.00
3,300.0	23.90	350.08	3,213.8	483.4	-84.6	178.6	0.00	0.00	0.00
3,400.0	23.90	350.08	3,305.2	523.3	-91.6	193.3	0.00	0.00	0.00
3,500.0	23.90	350.08	3,396.6	563.3	-98.5	208.1	0.00	0.00	0.00
3,600.0	23.90	350.08	3,488.0	603.2	-105.5	222.8	0.00	0.00	0.00
3,700.0	23.90	350.08	3,579.5	643.1	-112.5	237.6	0.00	0.00	0.00
3,800.0	23.90	350.08	3,670.9	683.0	-119.5	252.3	0.00	0.00	0.00
3,900.0	23.90	350.08	3,762.3	722.9	-126.5	267.0	0.00	0.00	0.00
4,000.0	23.90	350.08	3,853.7	762.8	-133.5	281.8	0.00	0.00	0.00
4,100.0	23.90	350.08	3,945.1	802.7	-140.4	296.5	0.00	0.00	0.00
4,200.0	23.90	350.08	4,036.6	842.6	-147.4	311.3	0.00	0.00	0.00
4,300.0	23.90	350.08	4,128.0	882.6	-154.4	326.0	0.00	0.00	0.00
4,400.0	23.90	350.08	4,219.4	922.5	-161.4	340.8	0.00	0.00	0.00
4,500.0	23.90	350.08	4,310.8	962.4	-168.4	355.5	0.00	0.00	0.00
4,600.0	23.90	350.08	4,402.3	1,002.3	-175.4	370.3	0.00	0.00	0.00
4,700.0	23.90	350.08	4,493.7	1,042.2	-182.3	385.0	0.00	0.00	0.00
4,800.0	23.90	350.08	4,585.1	1,082.1	-189.3	399.7	0.00	0.00	0.00
4,900.0	23.90	350.08	4,676.5	1,122.0	-196.3	414.5	0.00	0.00	0.00
5,000.0	23.90	350.08	4,768.0	1,161.9	-203.3	429.2	0.00	0.00	0.00
5,100.0	23.90	350.08	4,859.4	1,201.8	-210.3	444.0	0.00	0.00	0.00
5,200.0	23.90	350.08	4,950.8	1,241.8	-217.3	458.7	0.00	0.00	0.00

Bayswater Exploration & Production LLC

Planning Report

Database:	edm	Local Co-ordinate Reference:	Well TOPAZ 08
Company:	Bayswater Exploration & Production, LLC	TVD Reference:	KB @ 4966.0usft (Original Well Elev)
Project:	DJ Basin	MD Reference:	KB @ 4966.0usft (Original Well Elev)
Site:	Topaz Pad 6-I HZ Pad	North Reference:	True
Well:	TOPAZ 08	Survey Calculation Method:	Minimum Curvature
Wellbore:	Wellbore #1		
Design:	Design #1		

Planned Survey									
Measured Depth (usft)	Inclination (°)	Azimuth (°)	Vertical Depth (usft)	+N/-S (usft)	+E/-W (usft)	Vertical Section (usft)	Dogleg Rate (°/100usft)	Build Rate (°/100usft)	Turn Rate (°/100usft)
5,300.0	23.90	350.08	5,042.2	1,281.7	-224.2	473.5	0.00	0.00	0.00
5,400.0	23.90	350.08	5,133.7	1,321.6	-231.2	488.2	0.00	0.00	0.00
5,500.0	23.90	350.08	5,225.1	1,361.5	-238.2	502.9	0.00	0.00	0.00
5,600.0	23.90	350.08	5,316.5	1,401.4	-245.2	517.7	0.00	0.00	0.00
5,700.0	23.90	350.08	5,407.9	1,441.3	-252.2	532.4	0.00	0.00	0.00
5,800.0	23.90	350.08	5,499.3	1,481.2	-259.2	547.2	0.00	0.00	0.00
5,900.0	23.90	350.08	5,590.8	1,521.1	-266.1	561.9	0.00	0.00	0.00
6,000.0	23.90	350.08	5,682.2	1,561.1	-273.1	576.7	0.00	0.00	0.00
6,100.0	23.90	350.08	5,773.6	1,601.0	-280.1	591.4	0.00	0.00	0.00
6,200.0	23.90	350.08	5,865.0	1,640.9	-287.1	606.2	0.00	0.00	0.00
6,300.0	23.90	350.08	5,956.5	1,680.8	-294.1	620.9	0.00	0.00	0.00
6,400.0	23.90	350.08	6,047.9	1,720.7	-301.0	635.6	0.00	0.00	0.00
6,500.0	23.90	350.08	6,139.3	1,760.6	-308.0	650.4	0.00	0.00	0.00
6,600.0	23.90	350.08	6,230.7	1,800.5	-315.0	665.1	0.00	0.00	0.00
6,700.0	23.90	350.08	6,322.2	1,840.4	-322.0	679.9	0.00	0.00	0.00
6,800.0	23.90	350.08	6,413.6	1,880.4	-329.0	694.6	0.00	0.00	0.00
6,900.0	23.90	350.08	6,505.0	1,920.3	-336.0	709.4	0.00	0.00	0.00
7,000.0	23.90	350.08	6,596.4	1,960.2	-342.9	724.1	0.00	0.00	0.00
7,100.0	23.90	350.08	6,687.9	2,000.1	-349.9	738.8	0.00	0.00	0.00
7,160.3	23.90	350.08	6,743.0	2,024.1	-354.1	747.7	0.00	0.00	0.00
7,200.0	24.79	340.68	6,779.2	2,039.9	-358.3	754.9	10.00	2.25	-23.66
7,300.0	29.25	320.84	6,868.4	2,078.8	-380.7	784.6	10.00	4.46	-19.84
7,400.0	35.85	306.77	6,952.8	2,115.3	-419.7	830.0	10.00	6.59	-14.07
7,500.0	43.61	296.85	7,029.7	2,148.5	-474.1	889.9	10.00	7.76	-9.92
7,600.0	52.00	289.50	7,096.9	2,177.3	-542.1	962.3	10.00	8.40	-7.35
7,700.0	60.76	283.69	7,152.2	2,200.9	-621.9	1,045.1	10.00	8.76	-5.81
7,800.0	69.73	278.82	7,194.0	2,218.4	-710.8	1,135.8	10.00	8.97	-4.87
7,900.0	78.82	274.48	7,221.1	2,229.5	-806.3	1,231.6	10.00	9.09	-4.33
8,000.0	87.97	270.42	7,232.6	2,233.7	-905.5	1,329.6	10.00	9.15	-4.07
8,024.7	90.24	269.43	7,233.0	2,233.6	-930.2	1,353.8	10.00	9.16	-4.01
8,100.0	90.24	269.43	7,232.7	2,232.9	-1,005.4	1,427.5	0.00	0.00	0.00
8,200.0	90.24	269.43	7,232.3	2,231.9	-1,105.4	1,525.3	0.00	0.00	0.00
8,300.0	90.24	269.43	7,231.9	2,230.9	-1,205.4	1,623.1	0.00	0.00	0.00
8,400.0	90.24	269.43	7,231.4	2,229.9	-1,305.4	1,720.9	0.00	0.00	0.00
8,500.0	90.24	269.43	7,231.0	2,228.9	-1,405.4	1,818.7	0.00	0.00	0.00
8,600.0	90.24	269.43	7,230.6	2,227.9	-1,505.4	1,916.6	0.00	0.00	0.00
8,700.0	90.24	269.43	7,230.2	2,226.9	-1,605.4	2,014.4	0.00	0.00	0.00
8,800.0	90.24	269.43	7,229.8	2,225.9	-1,705.4	2,112.2	0.00	0.00	0.00
8,900.0	90.24	269.43	7,229.4	2,224.9	-1,805.4	2,210.0	0.00	0.00	0.00
9,000.0	90.24	269.43	7,229.0	2,223.9	-1,905.4	2,307.8	0.00	0.00	0.00
9,100.0	90.24	269.43	7,228.5	2,222.9	-2,005.4	2,405.7	0.00	0.00	0.00
9,200.0	90.24	269.43	7,228.1	2,221.9	-2,105.4	2,503.5	0.00	0.00	0.00
9,300.0	90.24	269.43	7,227.7	2,220.9	-2,205.4	2,601.3	0.00	0.00	0.00
9,400.0	90.24	269.43	7,227.3	2,219.9	-2,305.4	2,699.1	0.00	0.00	0.00
9,500.0	90.24	269.43	7,226.9	2,218.8	-2,405.4	2,796.9	0.00	0.00	0.00
9,600.0	90.24	269.43	7,226.5	2,217.8	-2,505.4	2,894.7	0.00	0.00	0.00
9,700.0	90.24	269.43	7,226.1	2,216.8	-2,605.4	2,992.6	0.00	0.00	0.00
9,800.0	90.24	269.43	7,225.6	2,215.8	-2,705.3	3,090.4	0.00	0.00	0.00
9,900.0	90.24	269.43	7,225.2	2,214.8	-2,805.3	3,188.2	0.00	0.00	0.00
10,000.0	90.24	269.43	7,224.8	2,213.8	-2,905.3	3,286.0	0.00	0.00	0.00
10,100.0	90.24	269.43	7,224.4	2,212.8	-3,005.3	3,383.8	0.00	0.00	0.00
10,200.0	90.24	269.43	7,224.0	2,211.8	-3,105.3	3,481.6	0.00	0.00	0.00
10,300.0	90.24	269.43	7,223.6	2,210.8	-3,205.3	3,579.5	0.00	0.00	0.00
10,400.0	90.24	269.43	7,223.2	2,209.8	-3,305.3	3,677.3	0.00	0.00	0.00

Bayswater Exploration & Production LLC

Planning Report

Database:	edm	Local Co-ordinate Reference:	Well TOPAZ 08
Company:	Bayswater Exploration & Production, LLC	TVD Reference:	KB @ 4966.0usft (Original Well Elev)
Project:	DJ Basin	MD Reference:	KB @ 4966.0usft (Original Well Elev)
Site:	Topaz Pad 6-I HZ Pad	North Reference:	True
Well:	TOPAZ 08	Survey Calculation Method:	Minimum Curvature
Wellbore:	Wellbore #1		
Design:	Design #1		

Planned Survey										
Measured Depth (usft)	Inclination (°)	Azimuth (°)	Vertical Depth (usft)	+N/-S (usft)	+E/-W (usft)	Vertical Section (usft)	Dogleg Rate (°/100usft)	Build Rate (°/100usft)	Turn Rate (°/100usft)	
10,500.0	90.24	269.43	7,222.7	2,208.8	-3,405.3	3,775.1	0.00	0.00	0.00	
10,600.0	90.24	269.43	7,222.3	2,207.8	-3,505.3	3,872.9	0.00	0.00	0.00	
10,700.0	90.24	269.43	7,221.9	2,206.8	-3,605.3	3,970.7	0.00	0.00	0.00	
10,800.0	90.24	269.43	7,221.5	2,205.8	-3,705.3	4,068.6	0.00	0.00	0.00	
10,900.0	90.24	269.43	7,221.1	2,204.8	-3,805.3	4,166.4	0.00	0.00	0.00	
11,000.0	90.24	269.43	7,220.7	2,203.8	-3,905.3	4,264.2	0.00	0.00	0.00	
11,100.0	90.24	269.43	7,220.3	2,202.8	-4,005.3	4,362.0	0.00	0.00	0.00	
11,200.0	90.24	269.43	7,219.8	2,201.8	-4,105.3	4,459.8	0.00	0.00	0.00	
11,300.0	90.24	269.43	7,219.4	2,200.8	-4,205.3	4,557.6	0.00	0.00	0.00	
11,400.0	90.24	269.43	7,219.0	2,199.8	-4,305.3	4,655.5	0.00	0.00	0.00	
11,500.0	90.24	269.43	7,218.6	2,198.8	-4,405.2	4,753.3	0.00	0.00	0.00	
11,600.0	90.24	269.43	7,218.2	2,197.8	-4,505.2	4,851.1	0.00	0.00	0.00	
11,700.0	90.24	269.43	7,217.8	2,196.8	-4,605.2	4,948.9	0.00	0.00	0.00	
11,800.0	90.24	269.43	7,217.4	2,195.8	-4,705.2	5,046.7	0.00	0.00	0.00	
11,900.0	90.24	269.43	7,216.9	2,194.8	-4,805.2	5,144.5	0.00	0.00	0.00	
12,000.0	90.24	269.43	7,216.5	2,193.8	-4,905.2	5,242.4	0.00	0.00	0.00	
12,100.0	90.24	269.43	7,216.1	2,192.8	-5,005.2	5,340.2	0.00	0.00	0.00	
12,200.0	90.24	269.43	7,215.7	2,191.8	-5,105.2	5,438.0	0.00	0.00	0.00	
12,300.0	90.24	269.43	7,215.3	2,190.8	-5,205.2	5,535.8	0.00	0.00	0.00	
12,400.0	90.24	269.43	7,214.9	2,189.8	-5,305.2	5,633.6	0.00	0.00	0.00	
12,500.0	90.24	269.43	7,214.5	2,188.8	-5,405.2	5,731.5	0.00	0.00	0.00	
12,600.0	90.24	269.43	7,214.0	2,187.8	-5,505.2	5,829.3	0.00	0.00	0.00	
12,700.0	90.24	269.43	7,213.6	2,186.7	-5,605.2	5,927.1	0.00	0.00	0.00	
12,800.0	90.24	269.43	7,213.2	2,185.7	-5,705.2	6,024.9	0.00	0.00	0.00	
12,900.0	90.24	269.43	7,212.8	2,184.7	-5,805.2	6,122.7	0.00	0.00	0.00	
13,000.0	90.24	269.43	7,212.4	2,183.7	-5,905.2	6,220.5	0.00	0.00	0.00	
13,100.0	90.24	269.43	7,212.0	2,182.7	-6,005.2	6,318.4	0.00	0.00	0.00	
13,200.0	90.24	269.43	7,211.6	2,181.7	-6,105.1	6,416.2	0.00	0.00	0.00	
13,300.0	90.24	269.43	7,211.1	2,180.7	-6,205.1	6,514.0	0.00	0.00	0.00	
13,400.0	90.24	269.43	7,210.7	2,179.7	-6,305.1	6,611.8	0.00	0.00	0.00	
13,500.0	90.24	269.43	7,210.3	2,178.7	-6,405.1	6,709.6	0.00	0.00	0.00	
13,600.0	90.24	269.43	7,209.9	2,177.7	-6,505.1	6,807.4	0.00	0.00	0.00	
13,700.0	90.24	269.43	7,209.5	2,176.7	-6,605.1	6,905.3	0.00	0.00	0.00	
13,800.0	90.24	269.43	7,209.1	2,175.7	-6,705.1	7,003.1	0.00	0.00	0.00	
13,900.0	90.24	269.43	7,208.7	2,174.7	-6,805.1	7,100.9	0.00	0.00	0.00	
14,000.0	90.24	269.43	7,208.2	2,173.7	-6,905.1	7,198.7	0.00	0.00	0.00	
14,100.0	90.24	269.43	7,207.8	2,172.7	-7,005.1	7,296.5	0.00	0.00	0.00	
14,200.0	90.24	269.43	7,207.4	2,171.7	-7,105.1	7,394.4	0.00	0.00	0.00	
14,300.0	90.24	269.43	7,207.0	2,170.7	-7,205.1	7,492.2	0.00	0.00	0.00	
14,400.0	90.24	269.43	7,206.6	2,169.7	-7,305.1	7,590.0	0.00	0.00	0.00	
14,500.0	90.24	269.43	7,206.2	2,168.7	-7,405.1	7,687.8	0.00	0.00	0.00	
14,600.0	90.24	269.43	7,205.8	2,167.7	-7,505.1	7,785.6	0.00	0.00	0.00	
14,700.0	90.24	269.43	7,205.3	2,166.7	-7,605.1	7,883.4	0.00	0.00	0.00	
14,800.0	90.24	269.43	7,204.9	2,165.7	-7,705.1	7,981.3	0.00	0.00	0.00	
14,900.0	90.24	269.43	7,204.5	2,164.7	-7,805.0	8,079.1	0.00	0.00	0.00	
15,000.0	90.24	269.43	7,204.1	2,163.7	-7,905.0	8,176.9	0.00	0.00	0.00	
15,100.0	90.24	269.43	7,203.7	2,162.7	-8,005.0	8,274.7	0.00	0.00	0.00	
15,200.0	90.24	269.43	7,203.3	2,161.7	-8,105.0	8,372.5	0.00	0.00	0.00	
15,300.0	90.24	269.43	7,202.9	2,160.7	-8,205.0	8,470.3	0.00	0.00	0.00	
15,400.0	90.24	269.43	7,202.4	2,159.7	-8,305.0	8,568.2	0.00	0.00	0.00	
15,500.0	90.24	269.43	7,202.0	2,158.7	-8,405.0	8,666.0	0.00	0.00	0.00	
15,600.0	90.24	269.43	7,201.6	2,157.7	-8,505.0	8,763.8	0.00	0.00	0.00	
15,700.0	90.24	269.43	7,201.2	2,156.7	-8,605.0	8,861.6	0.00	0.00	0.00	
15,800.0	90.24	269.43	7,200.8	2,155.7	-8,705.0	8,959.4	0.00	0.00	0.00	

Bayswater Exploration & Production LLC

Planning Report

Database:	edm	Local Co-ordinate Reference:	Well TOPAZ 08
Company:	Bayswater Exploration & Production, LLC	TVD Reference:	KB @ 4966.0usft (Original Well Elev)
Project:	DJ Basin	MD Reference:	KB @ 4966.0usft (Original Well Elev)
Site:	Topaz Pad 6-I HZ Pad	North Reference:	True
Well:	TOPAZ 08	Survey Calculation Method:	Minimum Curvature
Wellbore:	Wellbore #1		
Design:	Design #1		

Planned Survey										
Measured Depth (usft)	Inclination (°)	Azimuth (°)	Vertical Depth (usft)	+N/-S (usft)	+E/-W (usft)	Vertical Section (usft)	Dogleg Rate (°/100usft)	Build Rate (°/100usft)	Turn Rate (°/100usft)	
15,900.0	90.24	269.43	7,200.4	2,154.7	-8,805.0	9,057.3	0.00	0.00	0.00	
16,000.0	90.24	269.43	7,200.0	2,153.6	-8,905.0	9,155.1	0.00	0.00	0.00	
16,100.0	90.24	269.43	7,199.5	2,152.6	-9,005.0	9,252.9	0.00	0.00	0.00	
16,200.0	90.24	269.43	7,199.1	2,151.6	-9,105.0	9,350.7	0.00	0.00	0.00	
16,300.0	90.24	269.43	7,198.7	2,150.6	-9,205.0	9,448.5	0.00	0.00	0.00	
16,400.0	90.24	269.43	7,198.3	2,149.6	-9,305.0	9,546.3	0.00	0.00	0.00	
16,500.0	90.24	269.43	7,197.9	2,148.6	-9,405.0	9,644.2	0.00	0.00	0.00	
16,600.0	90.24	269.43	7,197.5	2,147.6	-9,504.9	9,742.0	0.00	0.00	0.00	
16,700.0	90.24	269.43	7,197.1	2,146.6	-9,604.9	9,839.8	0.00	0.00	0.00	
16,800.0	90.24	269.43	7,196.6	2,145.6	-9,704.9	9,937.6	0.00	0.00	0.00	
16,900.0	90.24	269.43	7,196.2	2,144.6	-9,804.9	10,035.4	0.00	0.00	0.00	
17,000.0	90.24	269.43	7,195.8	2,143.6	-9,904.9	10,133.2	0.00	0.00	0.00	
17,100.0	90.24	269.43	7,195.4	2,142.6	-10,004.9	10,231.1	0.00	0.00	0.00	
17,200.0	90.24	269.43	7,195.0	2,141.6	-10,104.9	10,328.9	0.00	0.00	0.00	
17,300.0	90.24	269.43	7,194.6	2,140.6	-10,204.9	10,426.7	0.00	0.00	0.00	
17,400.0	90.24	269.43	7,194.2	2,139.6	-10,304.9	10,524.5	0.00	0.00	0.00	
17,500.0	90.24	269.43	7,193.7	2,138.6	-10,404.9	10,622.3	0.00	0.00	0.00	
17,600.0	90.24	269.43	7,193.3	2,137.6	-10,504.9	10,720.2	0.00	0.00	0.00	
17,678.4	90.24	269.43	7,193.0	2,136.8	-10,583.3	10,796.9	0.00	0.00	0.00	

Design Targets										
Target Name - hit/miss target - Shape	Dip Angle (°)	Dip Dir. (°)	TVD (usft)	+N/-S (usft)	+E/-W (usft)	Northing (usft)	Easting (usft)	Latitude	Longitude	
TOPAZ 8 PBHL - plan hits target center - Point	0.00	0.00	7,193.0	2,136.8	-10,583.3	1,464,816.33	3,207,598.86	40° 36' 24.898 N	104° 45' 8.348 W	
TOPAZ 8 LP - plan hits target center - Point	0.00	0.00	7,233.0	2,233.6	-930.2	1,464,998.71	3,217,250.76	40° 36' 25.877 N	104° 43' 3.191 W	