

Sonic Cement
Bond Log

API No.

05-121-10753-00-00

Company ST CROIX OPERATING INC.

Well HICKERT 41C-18349

Field SOMBRERO

County WASHINGTON State COLORADO

Location

NENE

Sec: 18 Twp: 3S Rge: 49W

Other Services
CEMENT
PERFORATE

Permanent Datum GROUND LEVEL Elevation N/A
Log Measured From KELLY BUSING 12' Ft. Above Perm. Datum
Drilling Measured From KELLY BUSHING

K.B.
D.F.
G.L.

Elevation

Run Number ONE

Date Survey 2/19/2021

Date Cementing N/A

Type Cementing Operation PRIMARY

Depth Driller 3929'

Depth Logger 2765'

Logged Interval 2763' to TD

Casing Driller 5.5" @ TD

Float Collar -- D.V. Tool 1200'

Squeeze Depth 1200'

Amount & Type Cement

Amount & Type Admix

Type Fluid In Hole WATER

Fluid Level FULL

Salinity PPM CL

Weight lb/gal -- Vis. 2632'

Approx. Logged Cement Top

Calculated Cement Top

Max. Hole Temperature 103 DEG F

Tool No. DBT-1

Spacing Recorded 3-5'

Equipment -- Location 900 Hays

Recorded By D.WALKER

Witnessed By ANDY BAUCKE

<<< Fold Here >>>

All interpretations are opinions based on inferences from electrical or other measurements and we cannot and do not guarantee the accuracy or correctness of any interpretation, and we shall not, except in the case of gross or willful negligence on our part, be liable or responsible for any loss, costs, damages, or expenses incurred or sustained by anyone resulting from any interpretation made by any of our officers, agents or employees. These interpretations are also subject to our general terms and conditions set out in our current Price Schedule.

Comments

Thank you for using Log-Tech

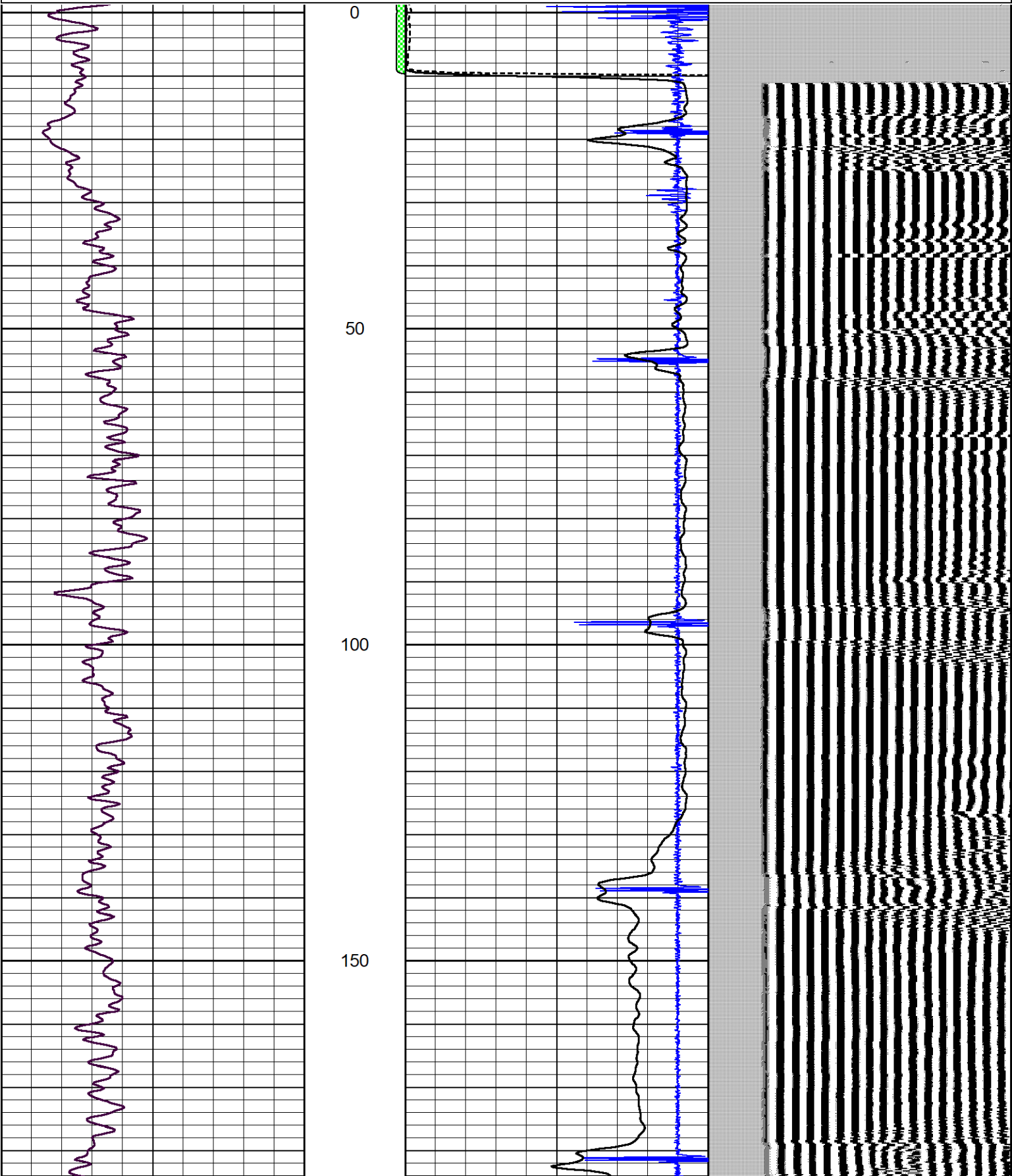
ATWOOD, KS,
WEST COPE, COLORADO, WEST TO RR ROAD.
NORTH TO 17 ROAD, EAST 3.5 MILES,
SOUTH INTO

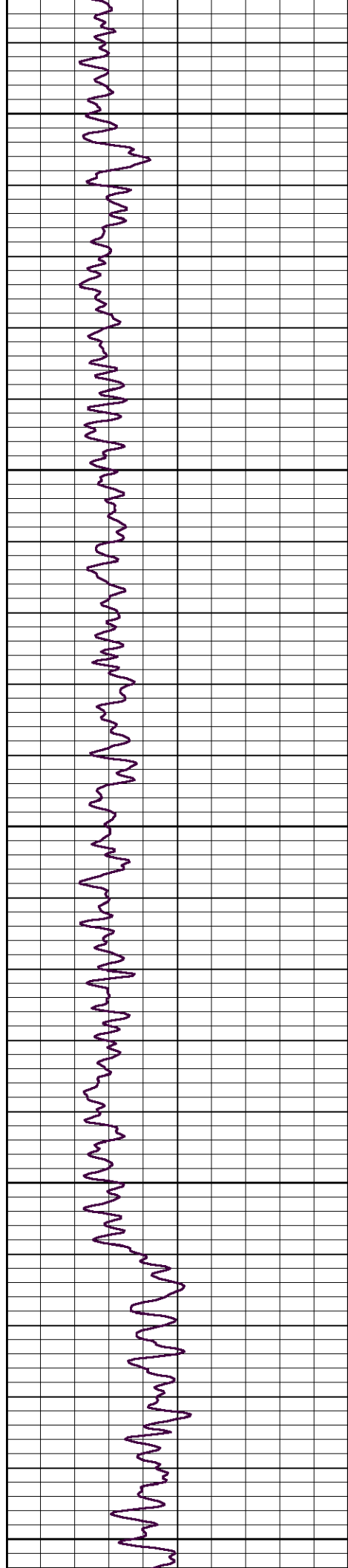


MAIN PASS

Database File	excellhickert_41c_18349_grcbl.db
Dataset Pathname	pass7
Presentation Format	log-tech
Dataset Creation	Fri Feb 19 12:58:11 2021
Charted by	Depth in Feet scaled 1:240

0	Gamma Ray (GAPI)	150	amp3ft	1.3	CCL	-0.15	200	Variable Density (usec)	1200
0	LTEN (lb)	2000	(mV)	Amplitude					
			-100 10	Amplified Amplitude (mV)					





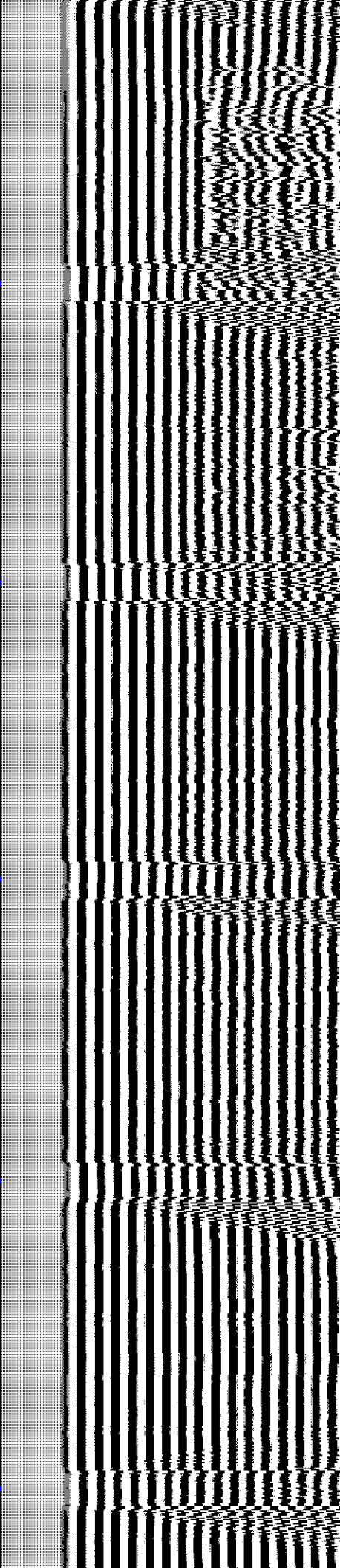
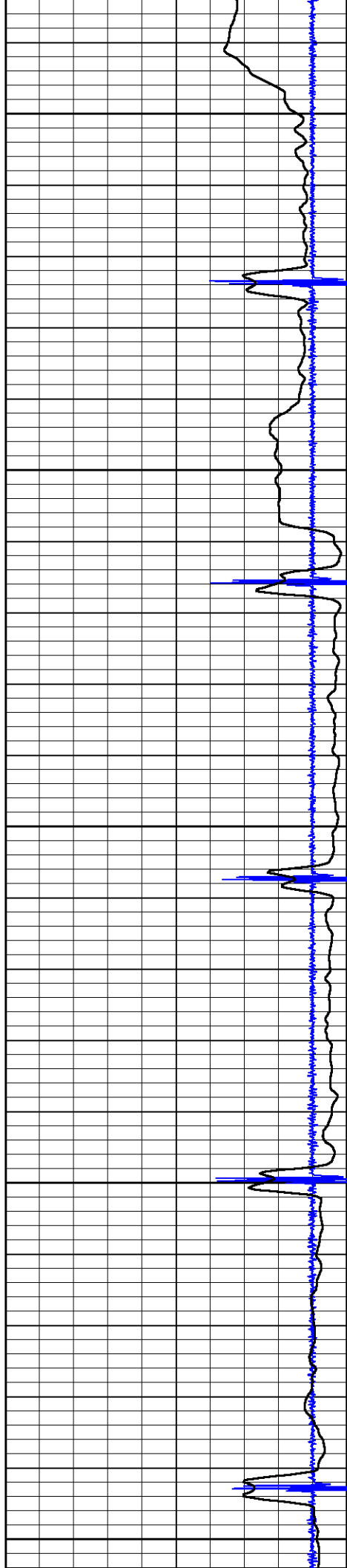
200

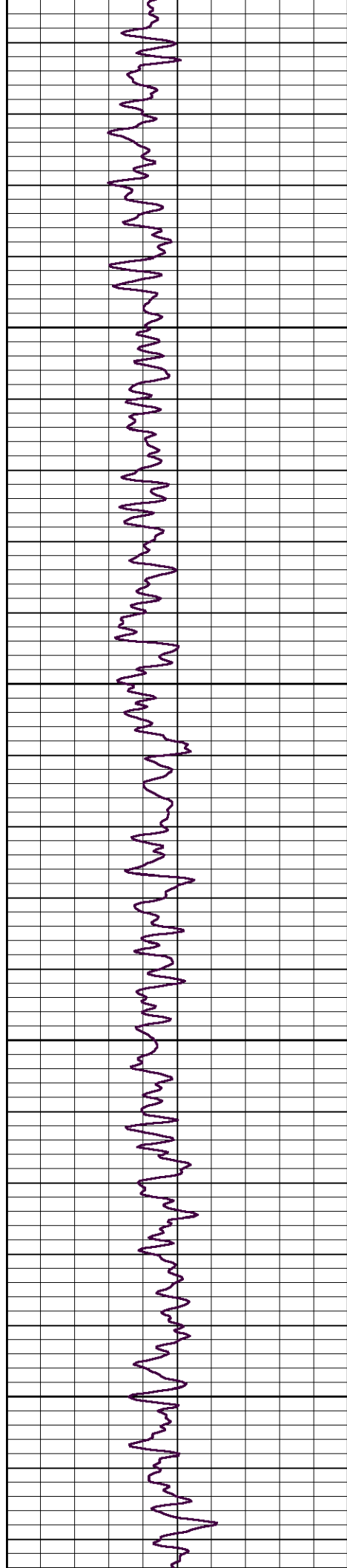
250

300

350

400



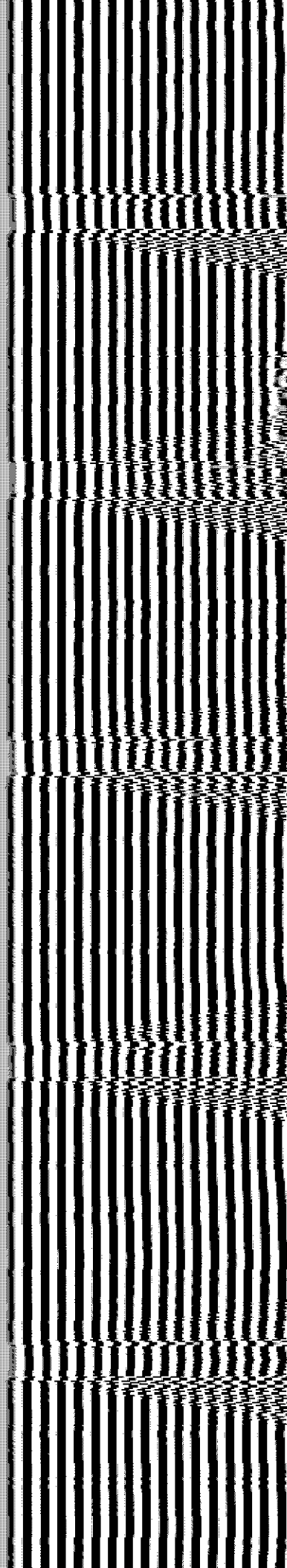
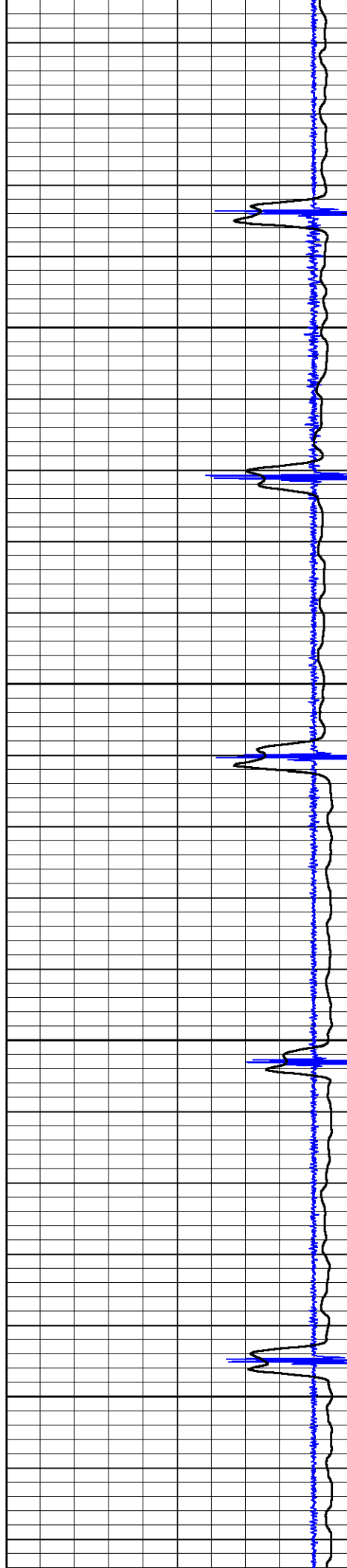


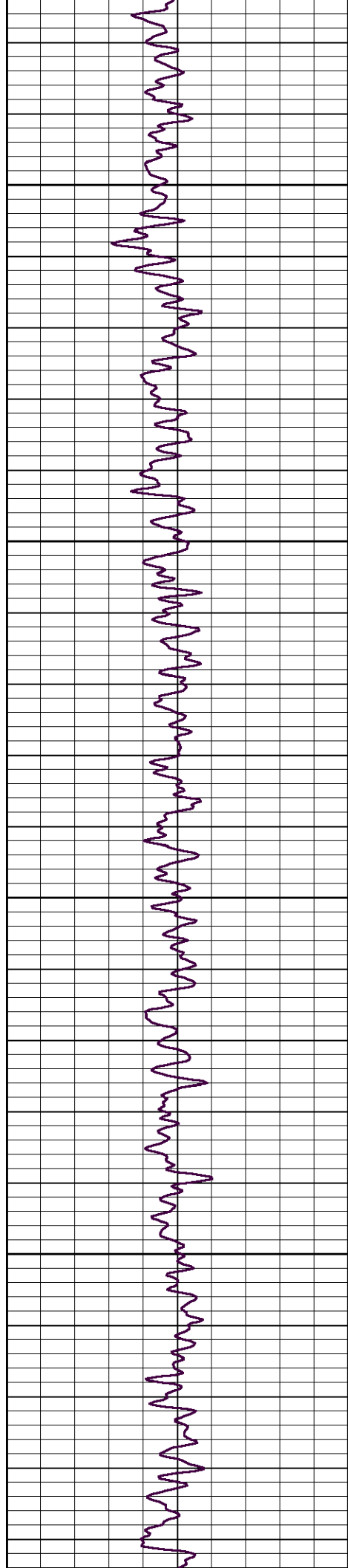
450

500

550

600



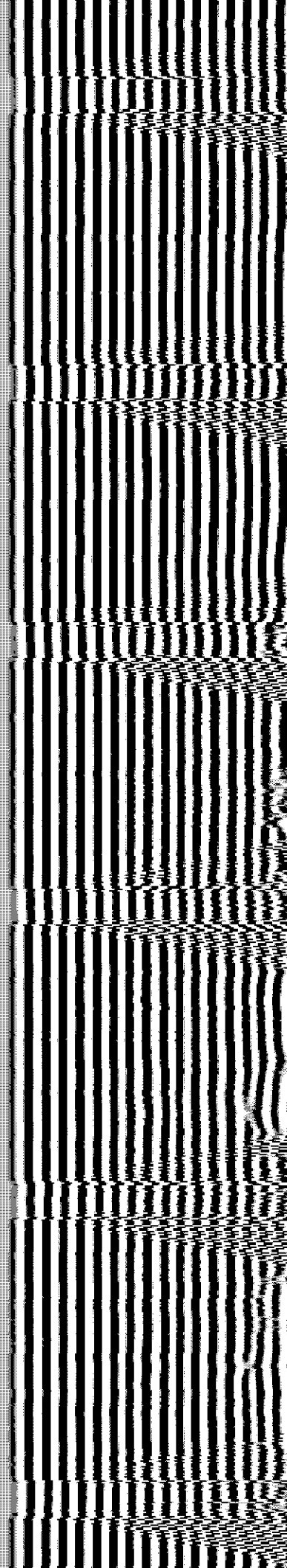
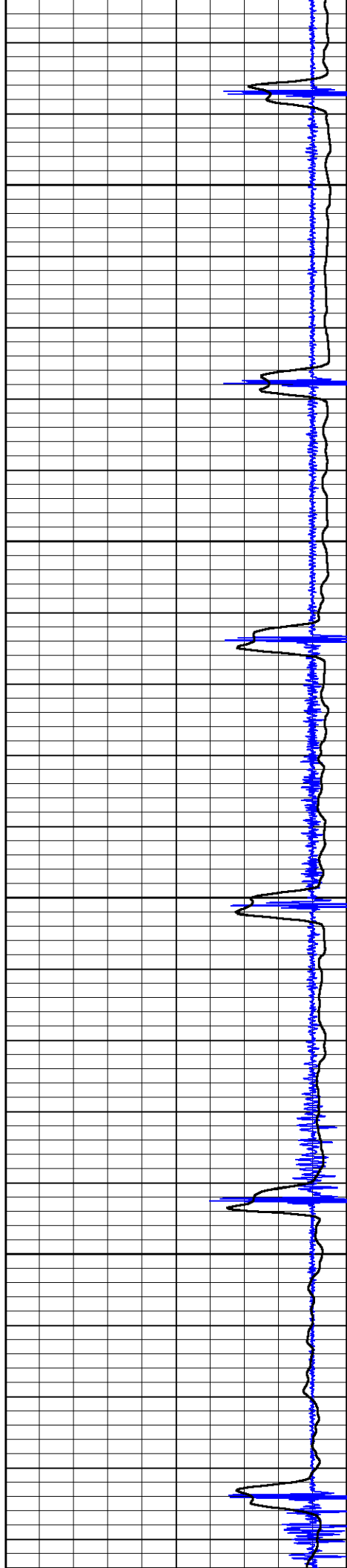


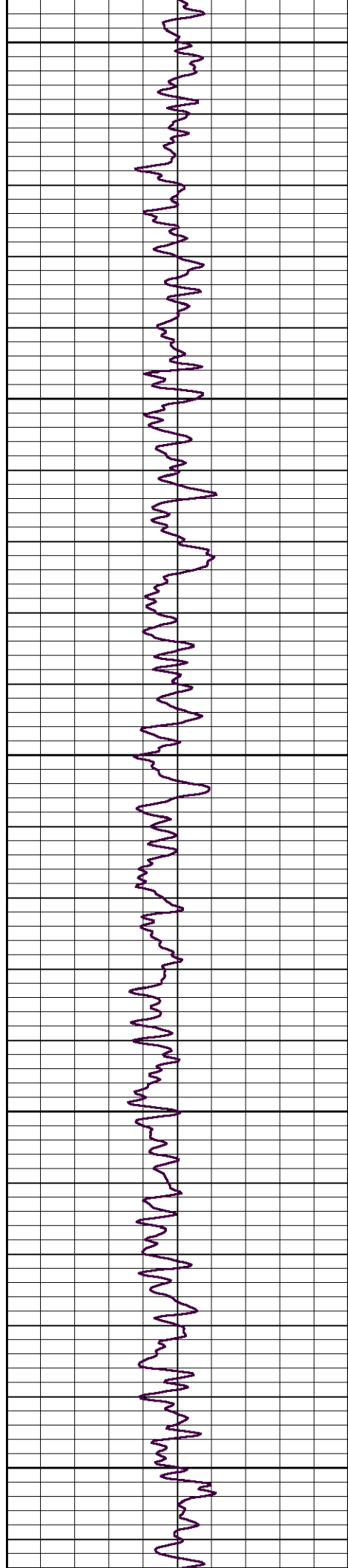
650

700

750

800





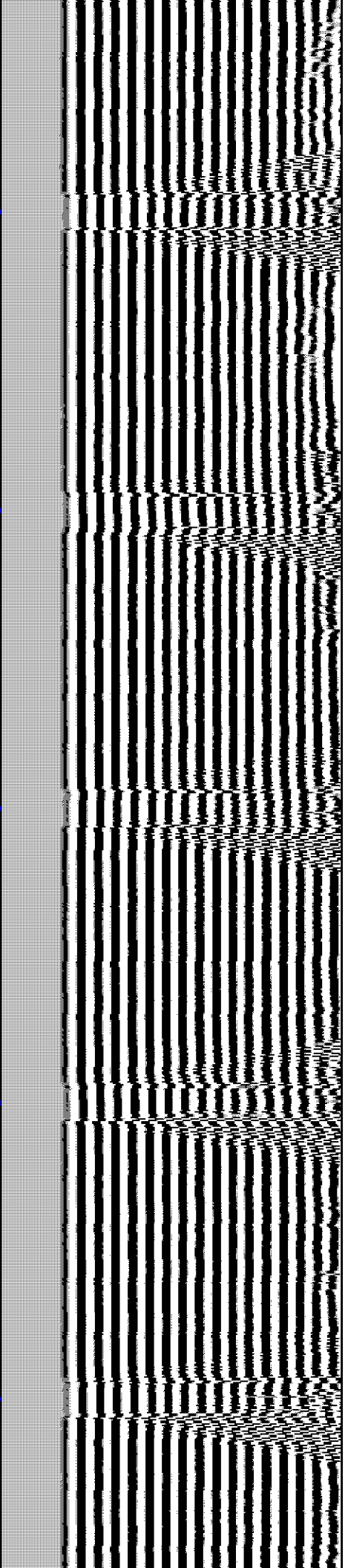
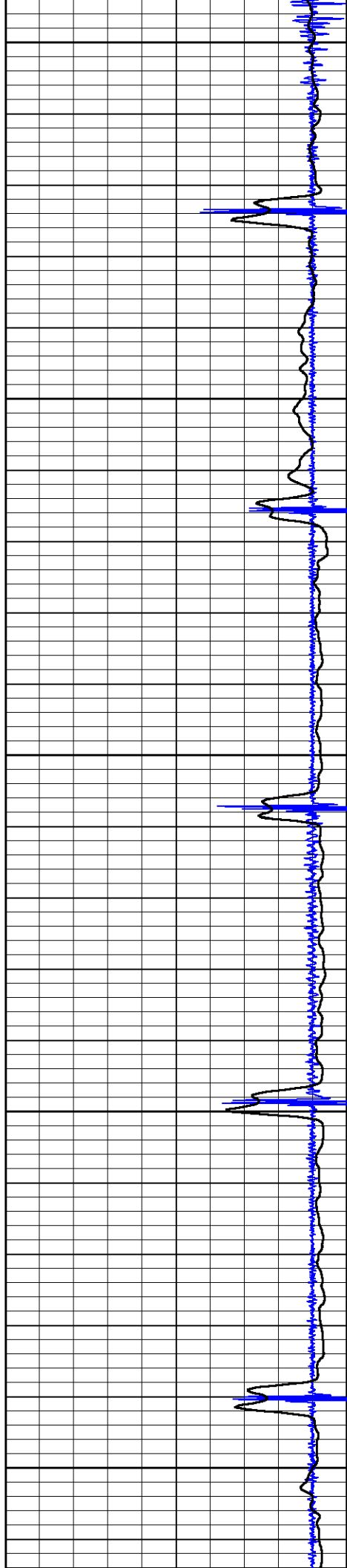
850

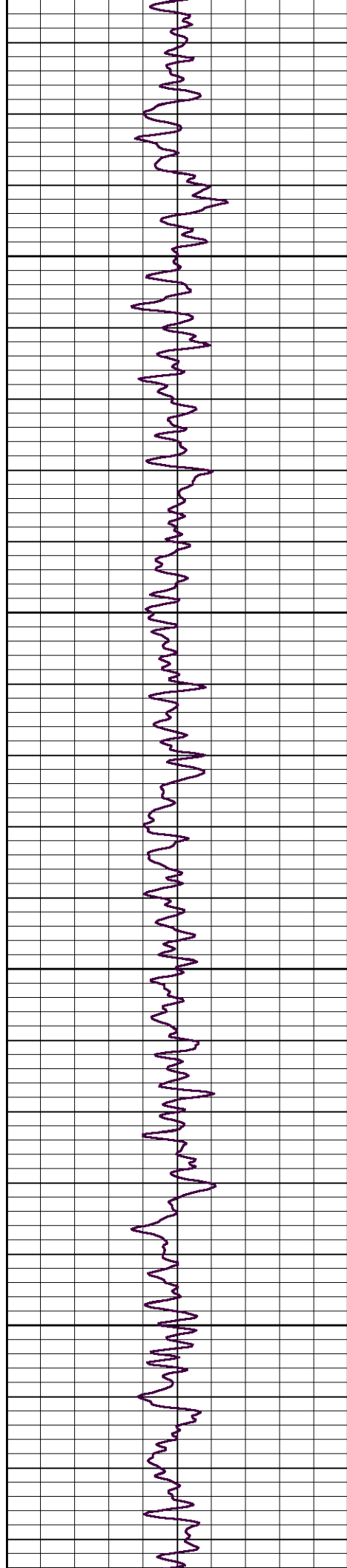
900

950

1000

1050



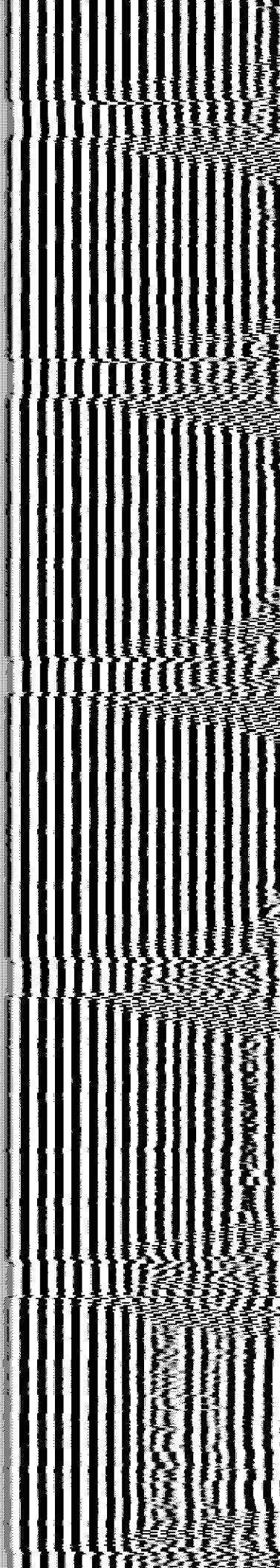
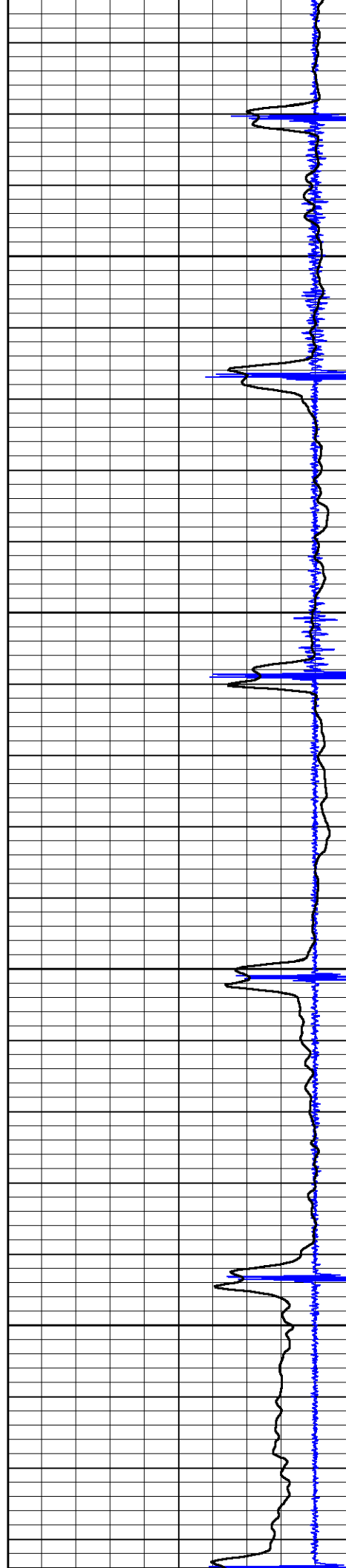


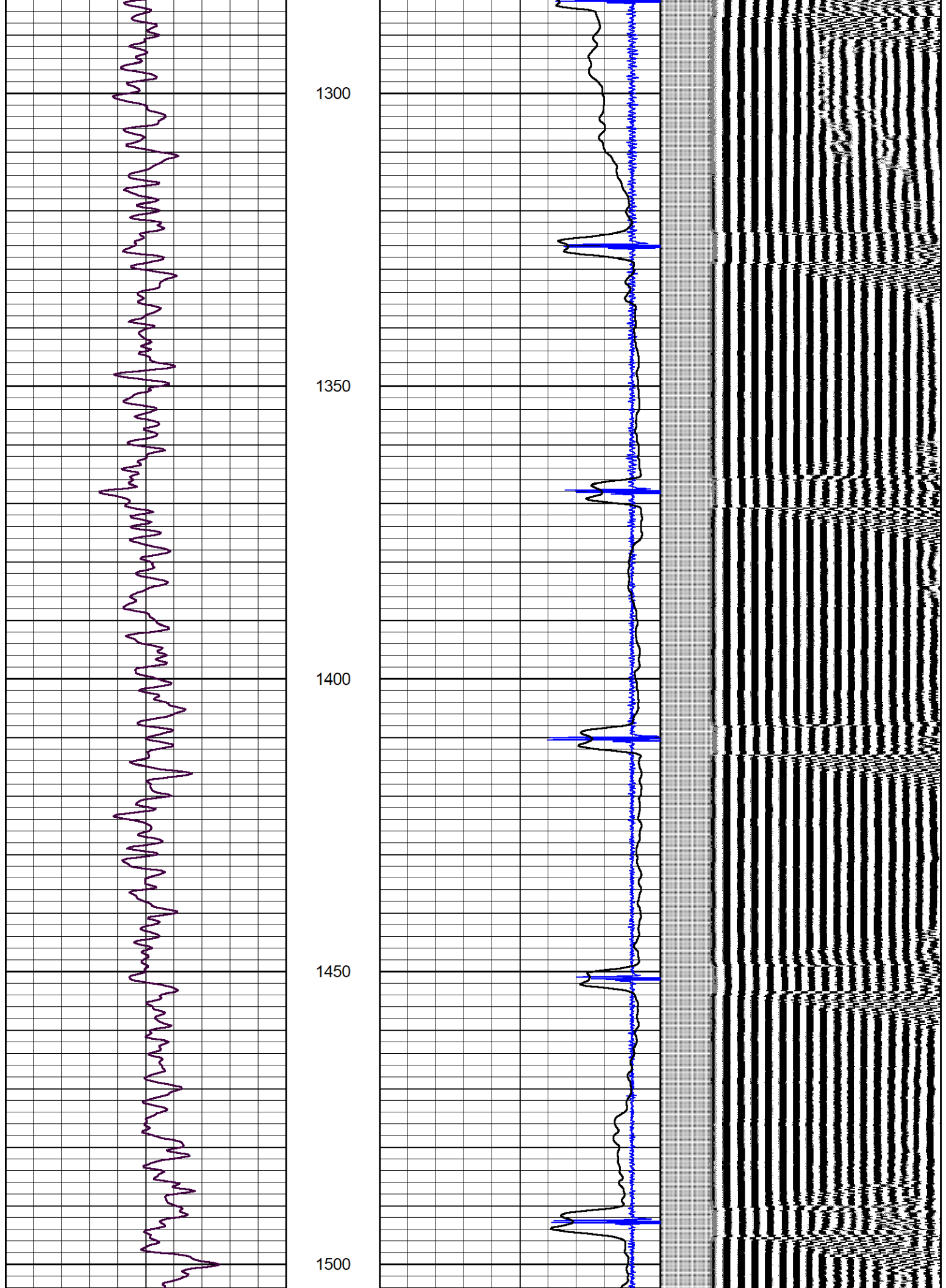
1100

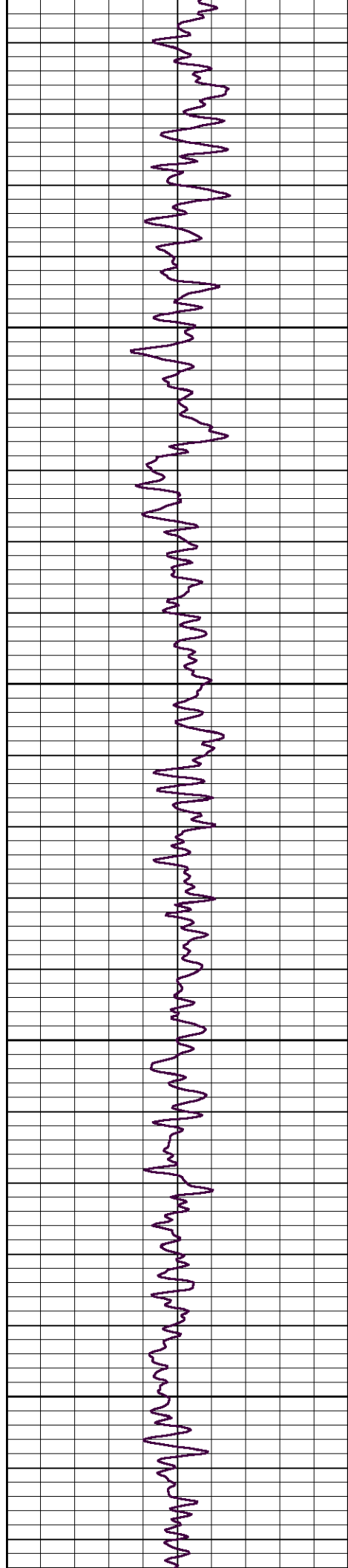
1150

1200

1250





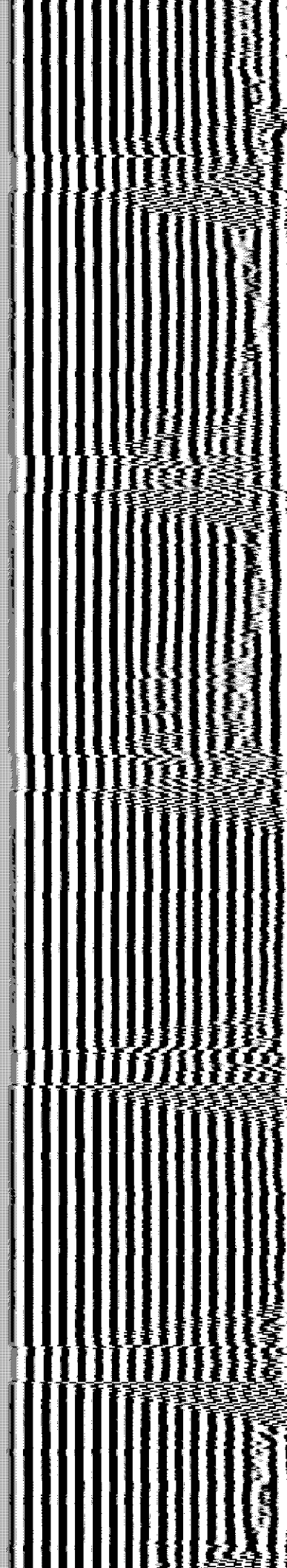
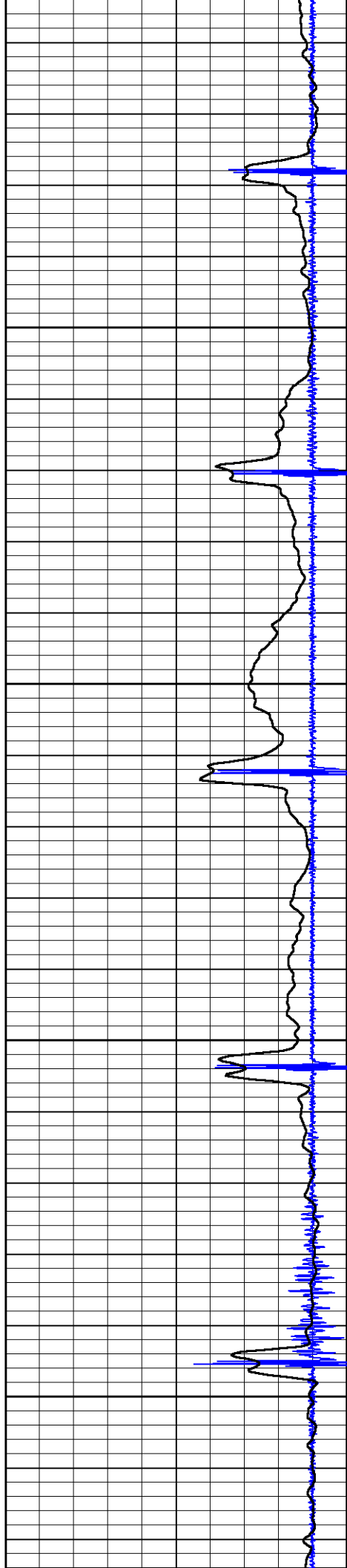


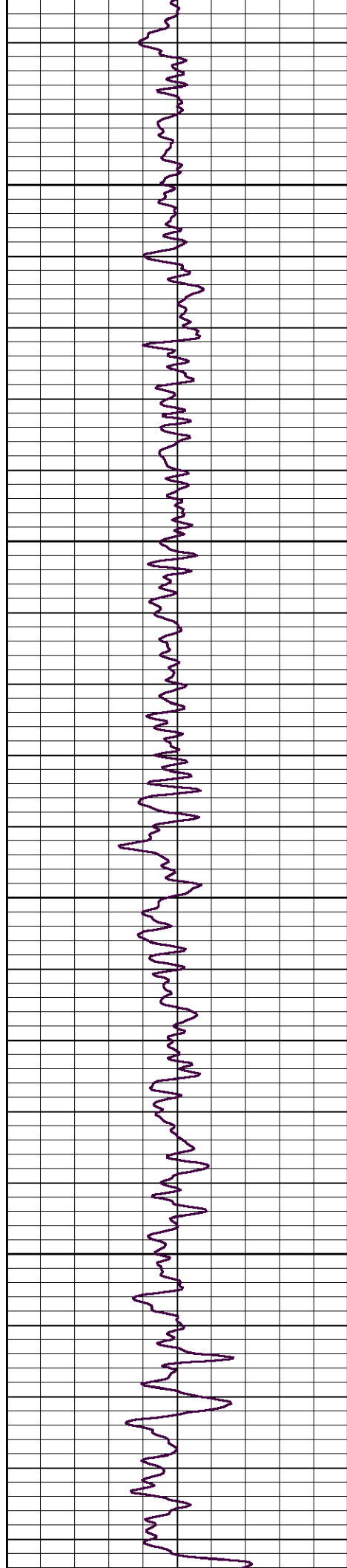
1550

1600

1650

1700



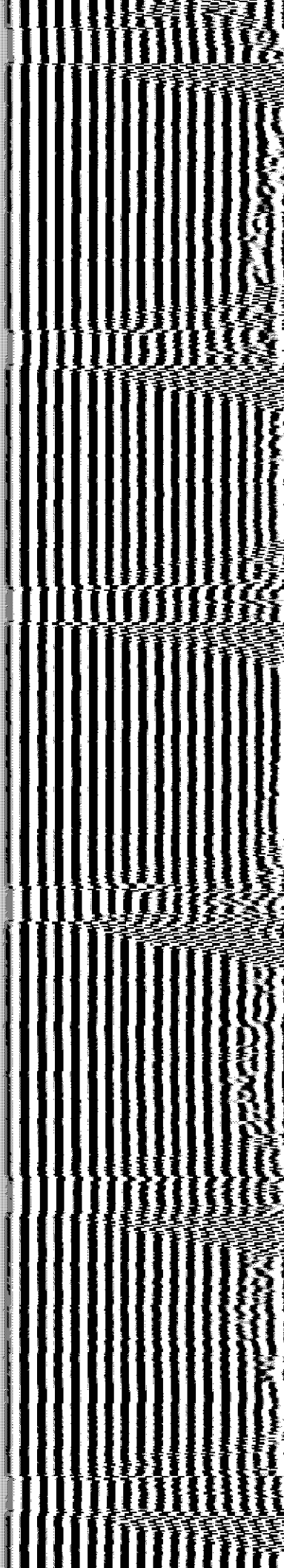
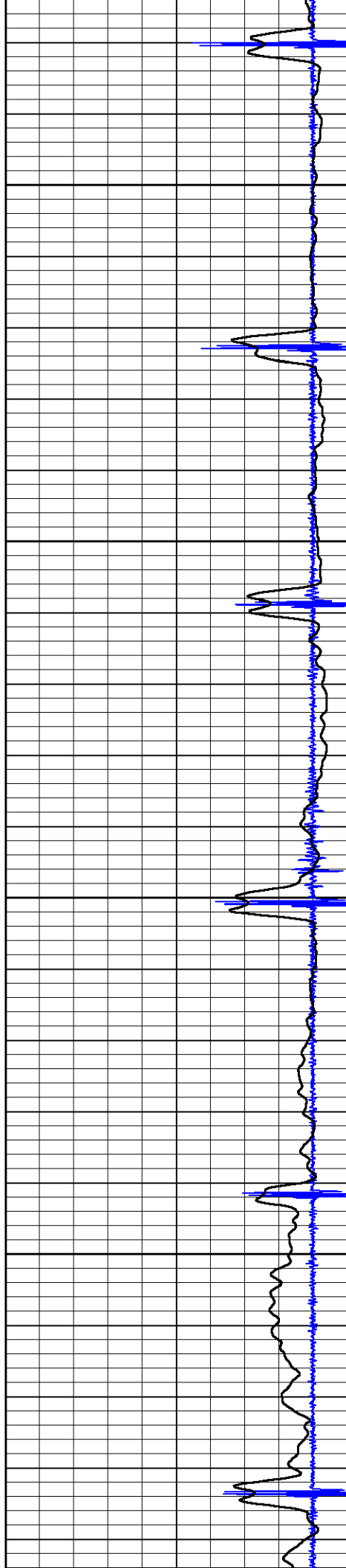


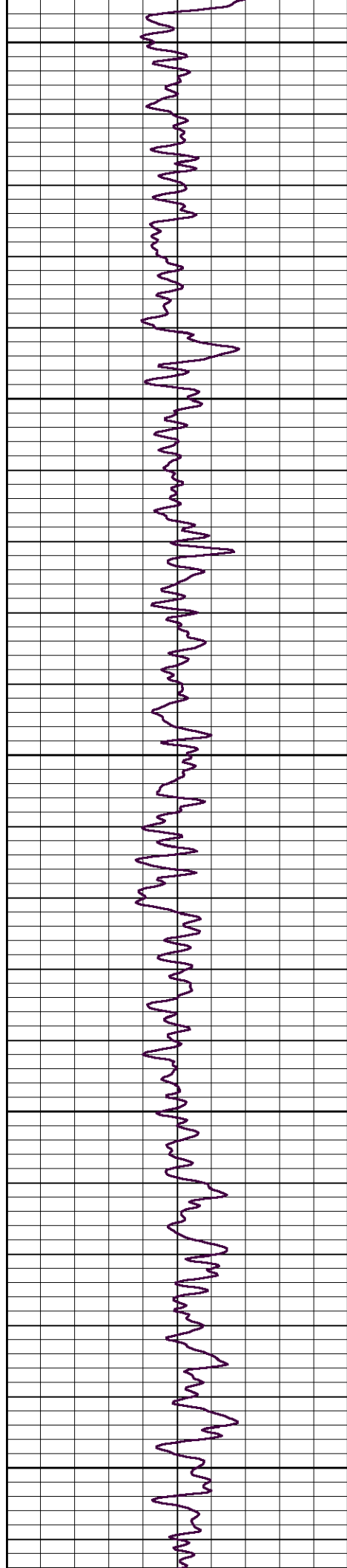
1750

1800

1850

1900





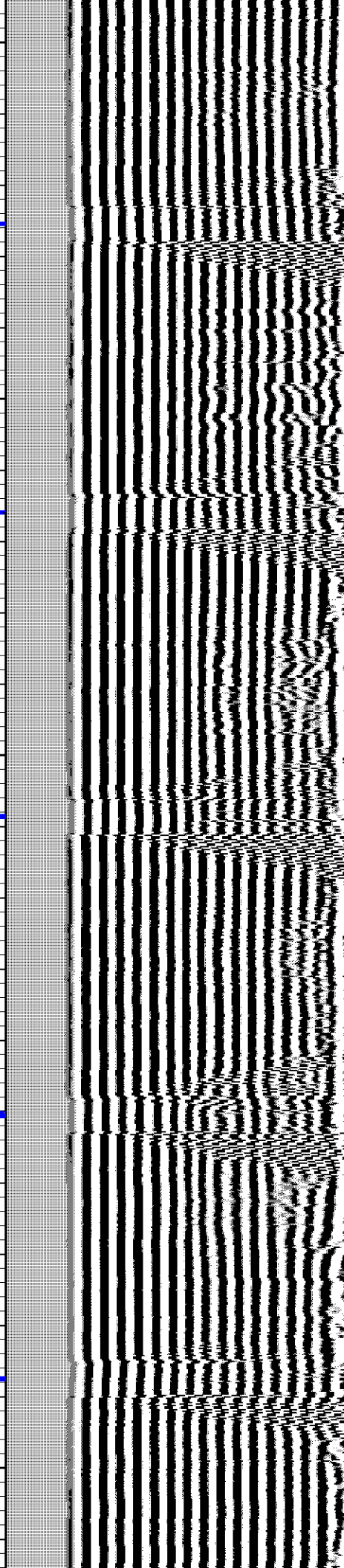
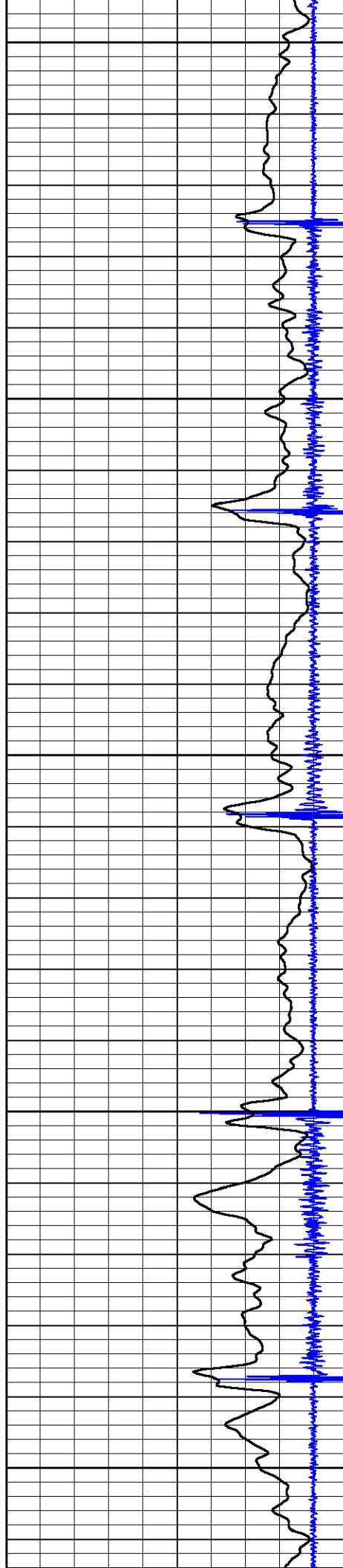
1950

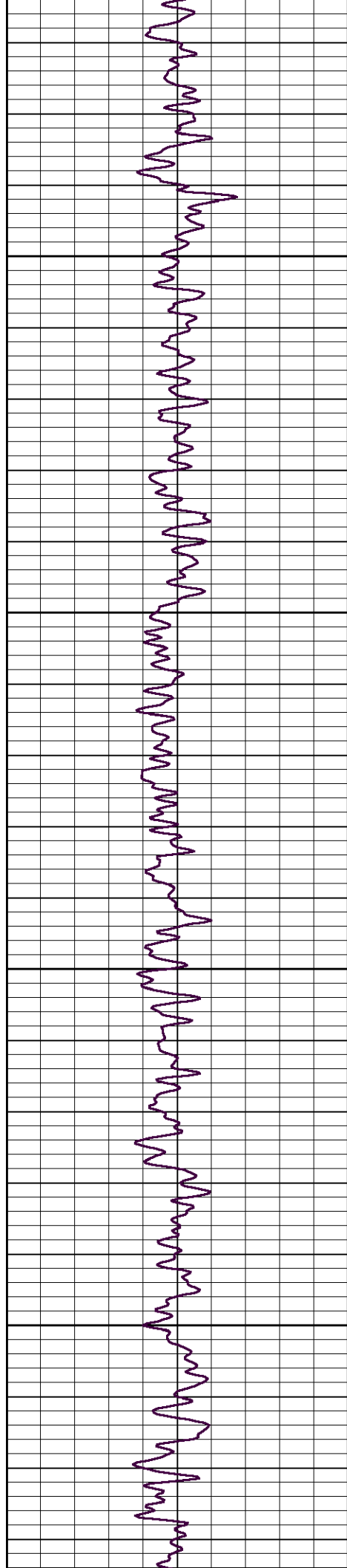
2000

2050

2100

2150



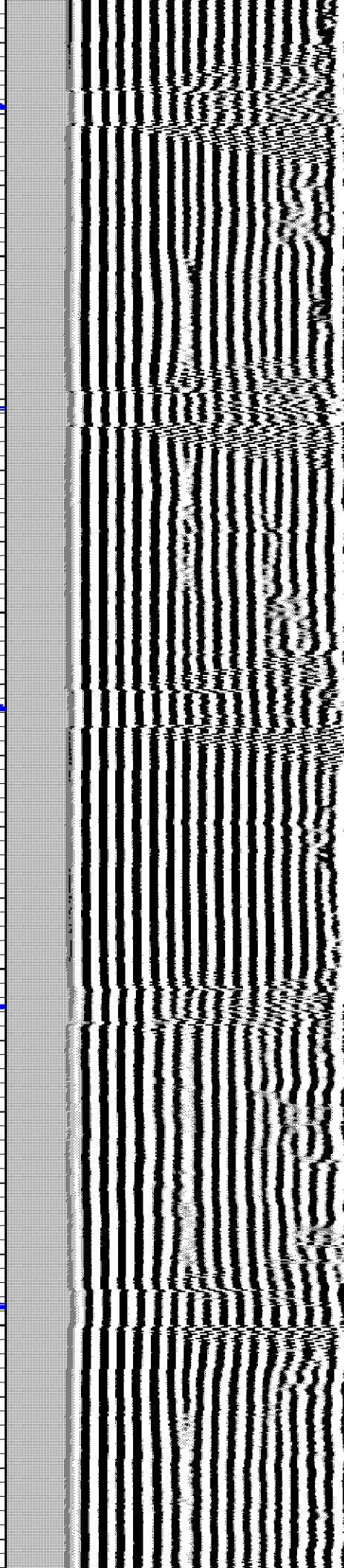
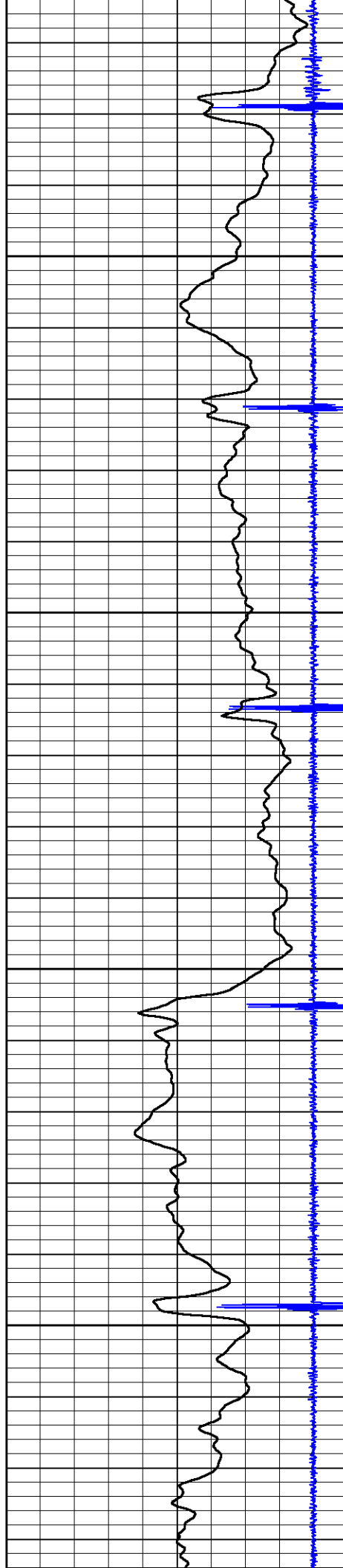


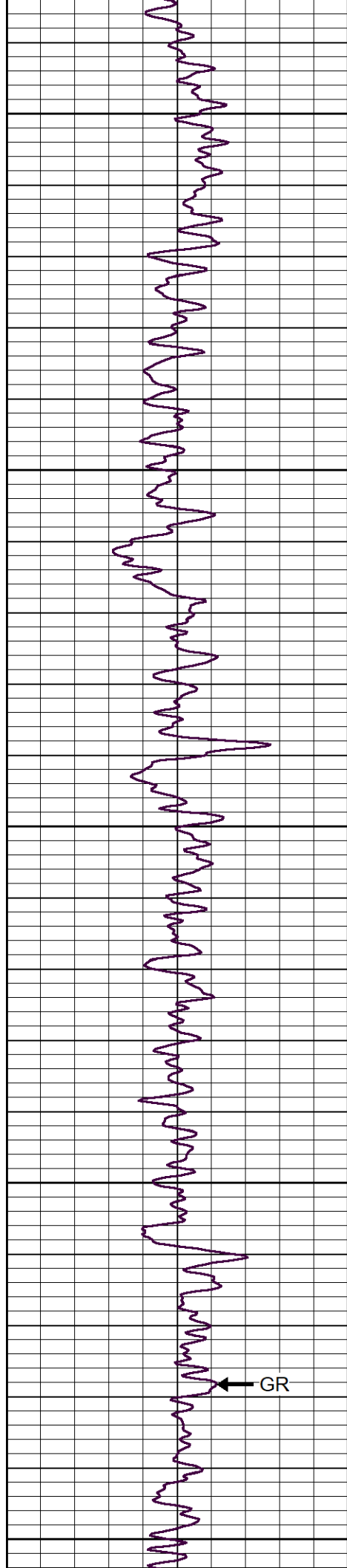
2200

2250

2300

2350





2400

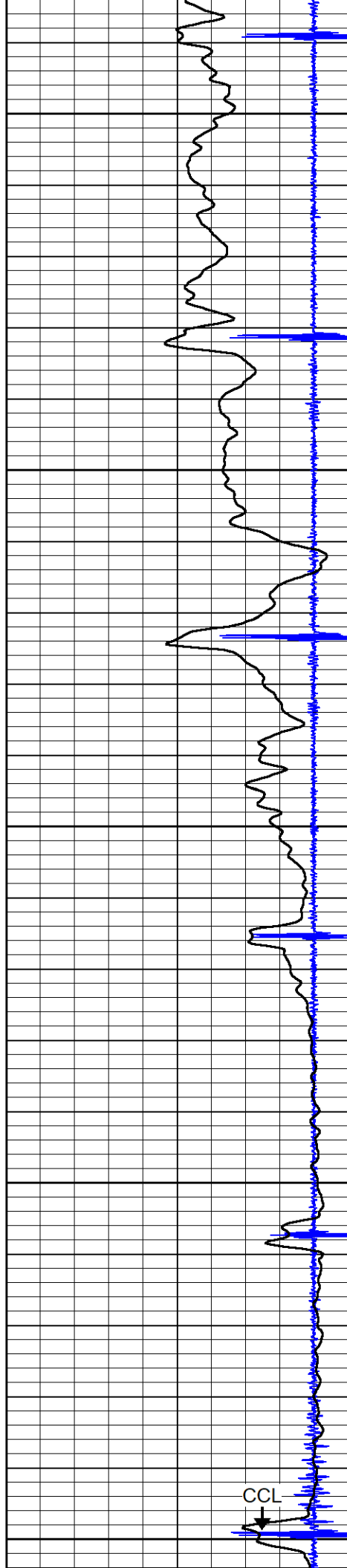
2450

2500

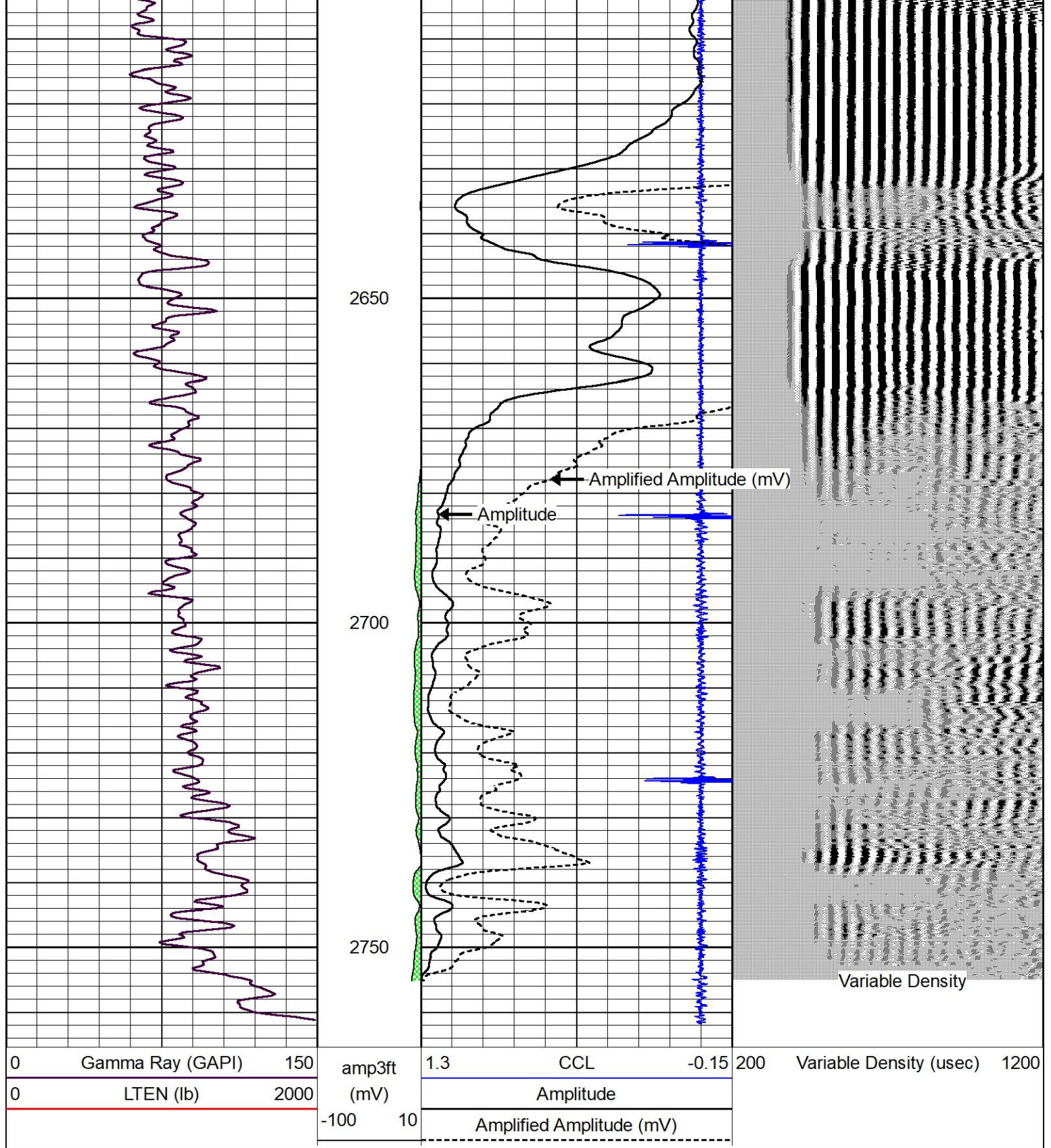
2550


GR

2600



CCL



Sensor	Offset (ft)	Schematic	Description	Length (ft)	O.D. (in)	Weight (lb)
			CENT-BC275-0000 Probe 2.75" Bowspring Centralizer	2.83	2.75	24.00

