

Inspection Photos

Loc#311534

Operator: Terra

Inspection Number: 692403045

Inspection Date: 2/11/21



COLORADO
Oil & Gas Conservation
Commission
Department of Natural Resources



Photo#1:
Overview of Location from entry.

February 11, 2021



COLORADO
Oil & Gas Conservation
Commission
Department of Natural Resources

Inspection Photos: Terra Federal Rulison Loc#311534



Photo#2:
Topsoil, stockpiled at West side of Location.

February 11, 2021



COLORADO
Oil & Gas Conservation
Commission
Department of Natural Resources

Inspection Photos: Terra Federal Rulison Loc#311534



Photo#3:

View along Fill slope from access road. Insert is initiating cracking along top of Fill.



Photo#4:

View from top of Fill down to base. Initiating erosion and sediment migration

February 11, 2021



COLORADO
Oil & Gas Conservation
Commission
Department of Natural Resources

Inspection Photos: Terra Federal Rulison Loc#311534



Photo#5:
Flexible drain discharges at base of Fill.

February 11, 2021

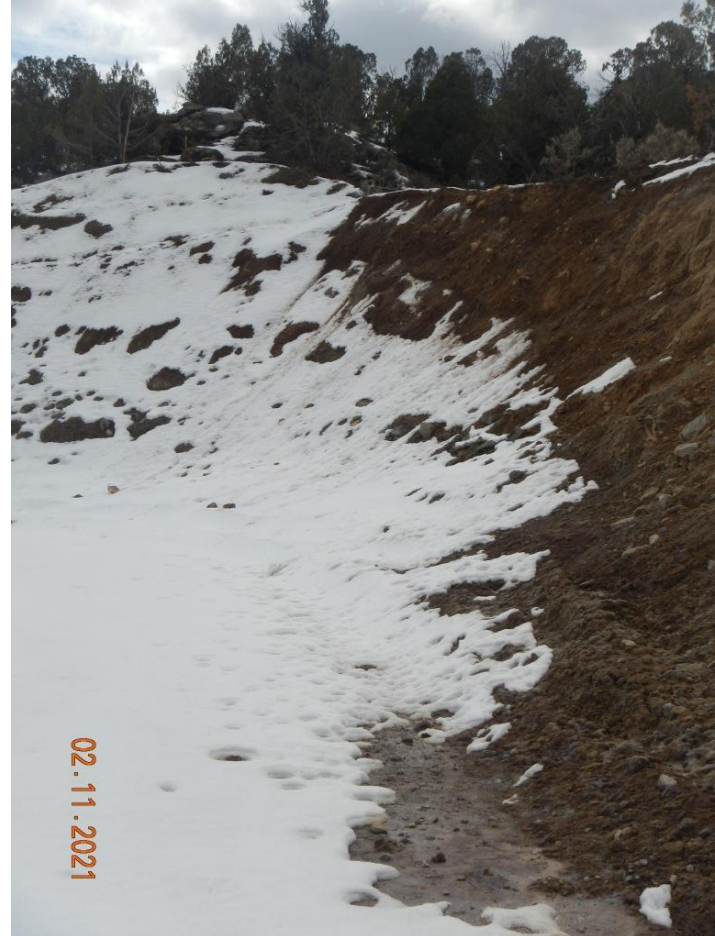


Photo#6:
Flexible drain discharges at base of Fill.



Photo#7:
View along Cut Slope to North.

February 11, 2021



Photo#8:
View along Cut Slope to South.



Photo#9:
Northwest portion of Cut Slope.

February 11, 2021



Photo#10:
Diversion BMP installed along top of cut .



Photo#11:
Ponding, rutting on pad.

February 11, 2021



COLORADO
Oil & Gas Conservation
Commission
Department of Natural Resources



Photo#12:
Ponding, rutting on pad..

Inspection Photos: Terra Federal Rulison Loc#311534



Photo#13:
Fill slope at North side of access road



Photo#14:
Fill slope at North side of access road.

February 11, 2021



COLORADO
Oil & Gas Conservation
Commission
Department of Natural Resources

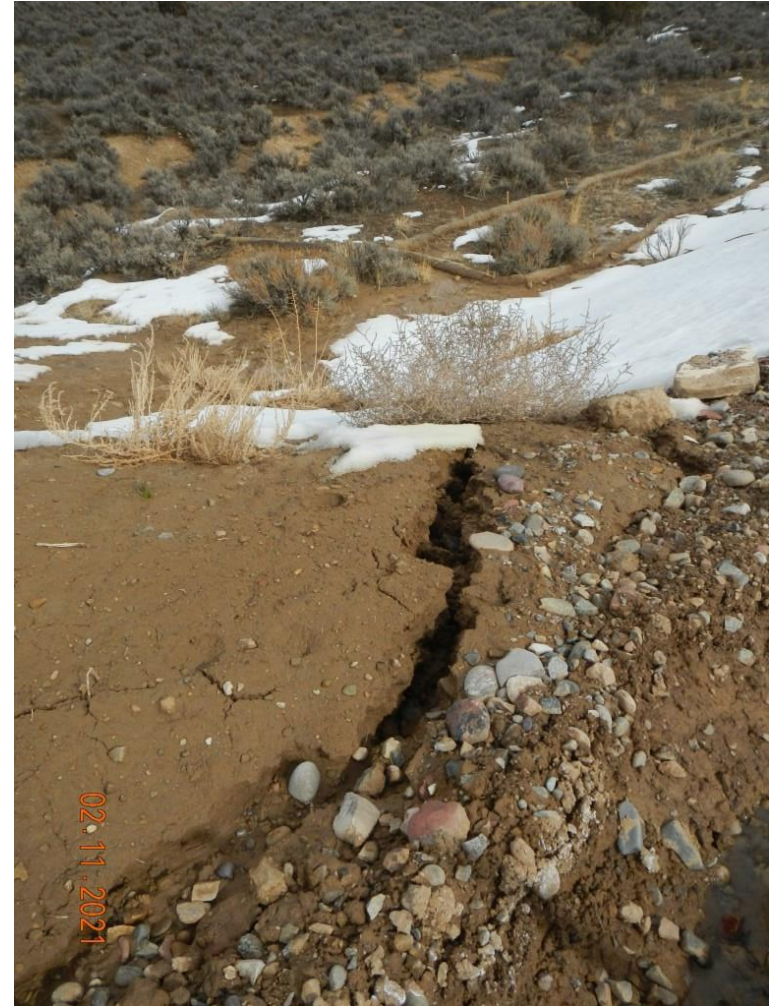
Inspection Photos: Terra Federal Rulison Loc#311534



Photo#15:

Stormwater draining along tire rut @ access road North side entry and cutting/eroding off road in Photo#15

February 11, 2021



Photo#16:



Photo#17:
Erosion concerns at access road intersection with
main lease road.

February 11, 2021



Photo#18:
Erosion concerns at access road intersection
with main lease road.