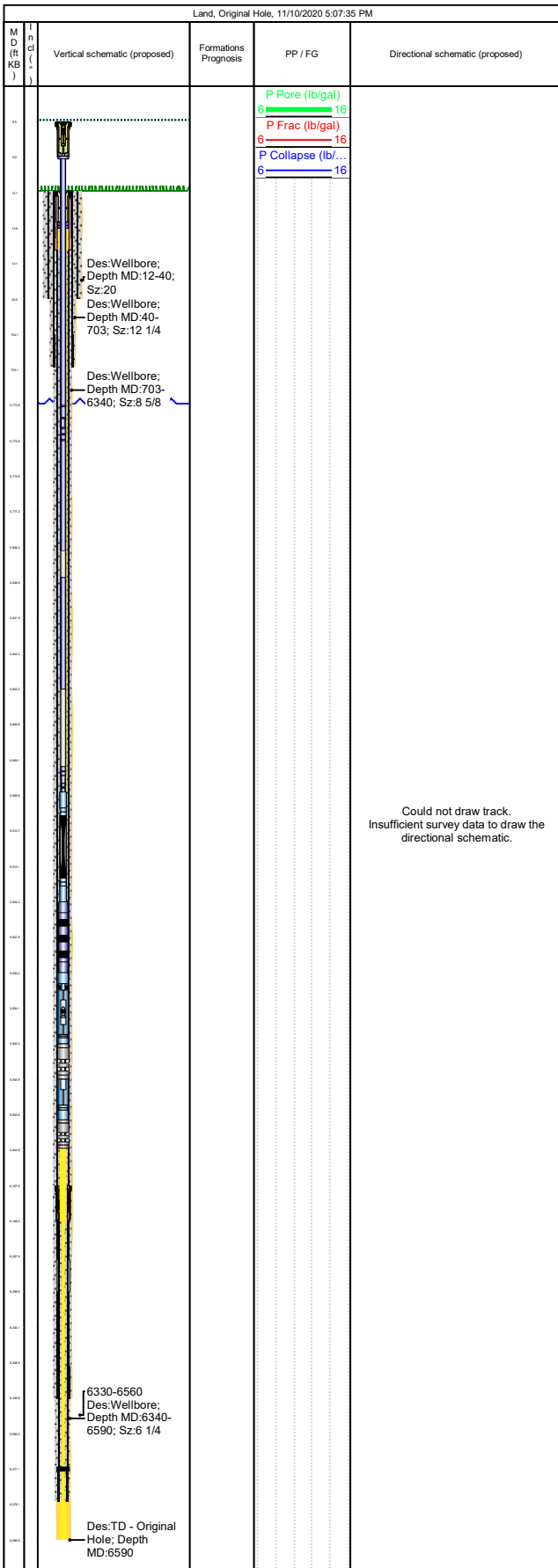




Wellbore Schematic

Well Name McLaughlin AC 58X	Lease McLaughlin, A.C. Unit	Field Name Rangely	Business Unit Mid-Continent
--------------------------------	--------------------------------	-----------------------	--------------------------------



Job Details						
Job Category			Start Date		Rig/Unit End Date	
Major Rig Work Over (MRWO)			3/15/2018		3/26/2018	
Casing Strings						
Csg Des	OD (in)	Wt/Len (lb/ft)	Grade	Top Thread	Set Depth (MD) (ftKB)	
Conductor	16	65.00	H-40		40	
Surface	10 3/4	45.50	J-55		703	
Production Casing	7	23.00	J-55		6340	
Production Liner 1	5	18.00	L-80		6578	
Tubing Strings						
Tubing - Production set at 5,944.5ftKB on 7/27/2013 09:00						
Tubing Description		Run Date		String Length (ft)		Set Depth (MD) (ftKB)
Tubing - Production		7/27/2013		5,932.50		5,944.5
Item Des	Jts	OD (in)	Wt (lb/ft)	Grade	Len (ft)	Btm (ftKB)
Tubing Hanger- EFT		7 1/16			0.80	12.8
Tubing- 2 7/8" NEW TK-2	179	2 7/8	6.50	J-55	5,763.24	5,776.0
Pump Seating Nipple		2 7/8			1.10	5,777.1
Tubing- 2 7/8" NEW TK-2	2	2 7/8	6.50	J-55	64.69	5,841.8
Tubing Drain- NO STOP		2 7/8			0.50	5,842.3
Tubing- 2 7/8" NEW TK-2	2	2 7/8	6.50	J-55	64.40	5,906.7
Tubing Pup Joint- 2 7/8" NEW TK-2		2 7/8	6.50	J-55	6.02	5,912.8
Cross Over- 2 7/8" x 2 3/8"		2 7/8			0.45	5,913.2
ESP - Pump - P12		4			14.50	5,927.7
ESP - Seal		5 1/8			6.30	5,934.0
ESP - Motor		5 5/8			9.70	5,943.7
Centralizer		6 1/8			0.80	5,944.5
ESP Landed @						5,944.5
Tubing - Production set at 5,941.0ftKB on 3/22/2018 17:30						
Tubing Description		Run Date		String Length (ft)		Set Depth (MD) (ftKB)
Tubing - Production		3/22/2018		5,932.50		5,941.0
Item Des	Jts	OD (in)	Wt (lb/ft)	Grade	Len (ft)	Btm (ftKB)
Tubing Hanger- EFT	1	7 1/16			0.80	9.3
Tubing- 2 7/8" Re-run TK-2	179	2 7/8	6.50	J-55	5,763.24	5,772.5
Pump Seating Nipple	1	2 7/8			1.10	5,773.6
Tubing- 2 7/8" Re-run TK-2	2	2 7/8	6.50	J-55	64.69	5,838.3
Tubing Drain- NO STOP	1	2 7/8			0.50	5,838.8
Tubing- 2 7/8" Re-run TK-2	2	2 7/8	6.50	J-55	64.40	5,903.2
Tubing Pup Joint- 2 7/8" Re-run TK-2	1	2 7/8	6.50	J-55	6.02	5,909.3
Cross Over- 2 7/8" x 2 3/8"	1	2 7/8			0.45	5,909.7
ESP - Pump	1	4			14.50	5,924.2
ESP - Seal	1	5 1/8			6.30	5,930.5
ESP - Motor	1	5 5/8			9.70	5,940.2
Centralizer	1	6 1/8			0.80	5,941.0
Perforations						
Date	Top (ftKB)	Btm (ftKB)	Shot Dens (shots/ft)	Entered Shot Total	Linked Zone	
1/20/2006	6,330.0	6,560.0				
Other Strings						
Run Date	Pull Date	Set Depth (ftKB)	Com			