

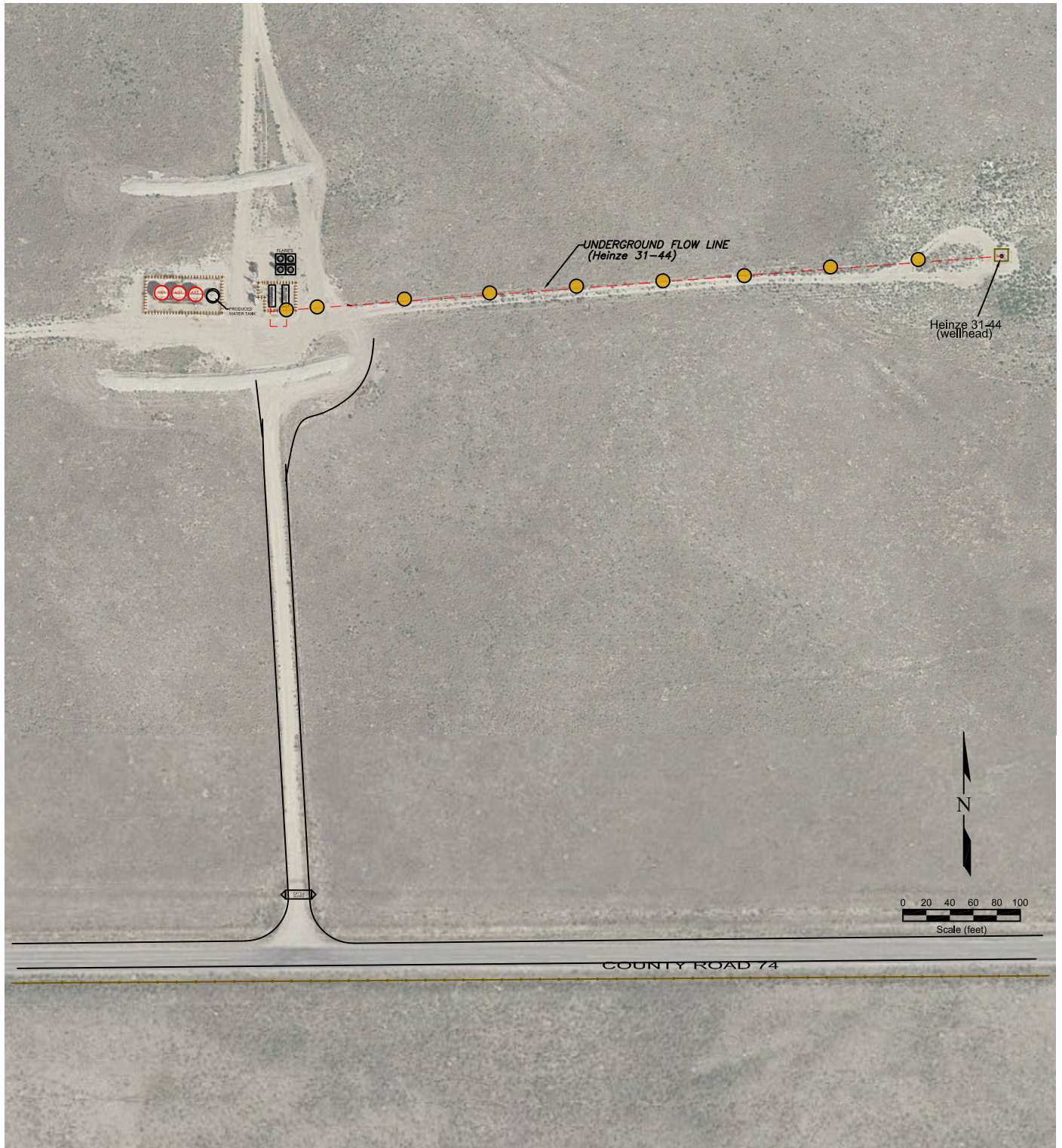
USGS 7.5 MINUTE SERIES (TOPOGRAPHIC)

Figure 1
SITE LOCATION MAP

Great Western Operating Company
Heinze 31-44 Wellhead & Flow Line
SESE Sec. 31, T7N, R63W 6th PM
Weld County, Colorado

Project Number C021-016	API Number 05-123-24929	Facility ID 289847
Date 2/16/21	Reviewed by PH	Filename 21016T





LEGEND

- WELLHEAD LOCATION
- PROPOSED SOIL FIELD SCREENING SAMPLE LOCATION (approximate)
- ABOVE GROUND STORAGE TANK
- FORMER FORMER FACILITY
- FENCE LINE
- ||||| CONTAINMENT BERM
- CONTAINMENT WALL
- - - - - UNDERGROUND FLOW LINE

Figure 2
SITE MAP

Great Western Operating Company
Heinze 31-44 Wellhead & Flow Line
 SESE Sec. 31, T7N, R63W 6th PM
 Weld County, Colorado

Project Number C021-016	API Number 05-123-24929	Facility ID 289847
Date 2/17/21	Reviewed by PH	Filename 21016Q





LEGEND

- WELLHEAD LOCATION
- PROPOSED SOIL FIELD SCREENING SAMPLE LOCATION (approximate)
- PROPOSED CONFIRMATION SOIL SAMPLE FOR LABORATORY ANALYSIS (approximate)
- FORMER FORMER FACILITY
- FENCELINE
- - - - UNDERGROUND FLOW LINE

Figure 3

PROPOSED SAMPLE LOCATIONS

Great Western Operating Company
Heinze 31-44 Wellhead & Flow Line
 SESE Sec. 31, T7N, R63W 6th PM
 Weld County, Colorado

Project Number C021-016	API Number 05-123-24929	Facility ID 289847
Date 2/16/21	Reviewed by PH	Filename 21016QQ

