



LEAM Drilling Services
 2027A Airport Rd.
 Conroe, Texas 77301

Prowant 18-2HZ
Scale 1":100' - MD
12/4/2020 12:26 PM

Oper. Company: Occidental Petroleum
Well: Prowant 18-2HZ
Rig: Precision 564
API: 051235076600
AFE: 2147195
State: Colorado
County: Larimer

Country: United States
Location: Prowant 4-18HZ Pad
Start Date: 11/31/2020
EndDate: 12/4/2020
Last Svy MD: 17,962'
Last Calc. Date: 12/4/2020
Calculation Method: Minimum Curvature

Latitude: 40.40505800
Longitude: -104.94199200
Site Name: Prowant 4-18HZ Pad

Elev GL: 4,939'
KB: 26'
Elev KB: 4,965'

Map System: Universal Transverse Mercator
Map Datum: North American Datum 1983
System Datum: Mean Sea Level
Map Zone: Zone 13N (108W to 102W)

Geomagnet Declination: 8.13
Grid Convergence: 0.03
Total Correction: 8.10

Survey Corr. Comp: Magvar
Field Strength (nT): .5202

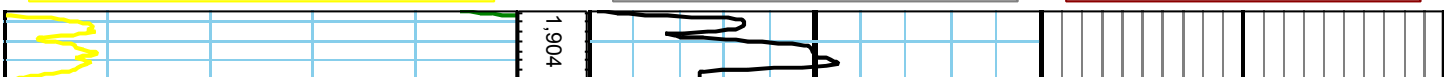
Magnetic Model: HDGM
Dip: 66.65

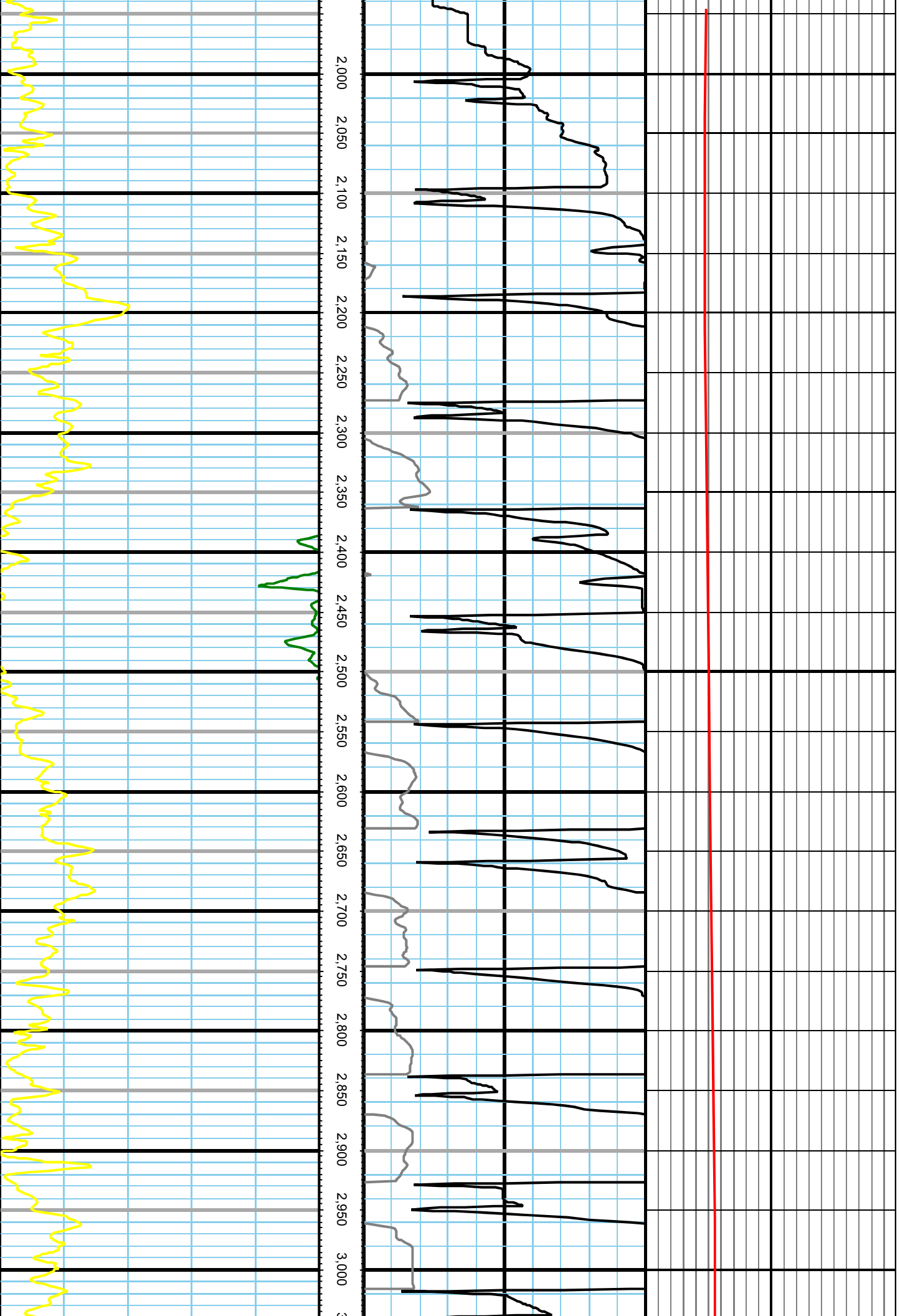
Day Hand: Drew Beaton

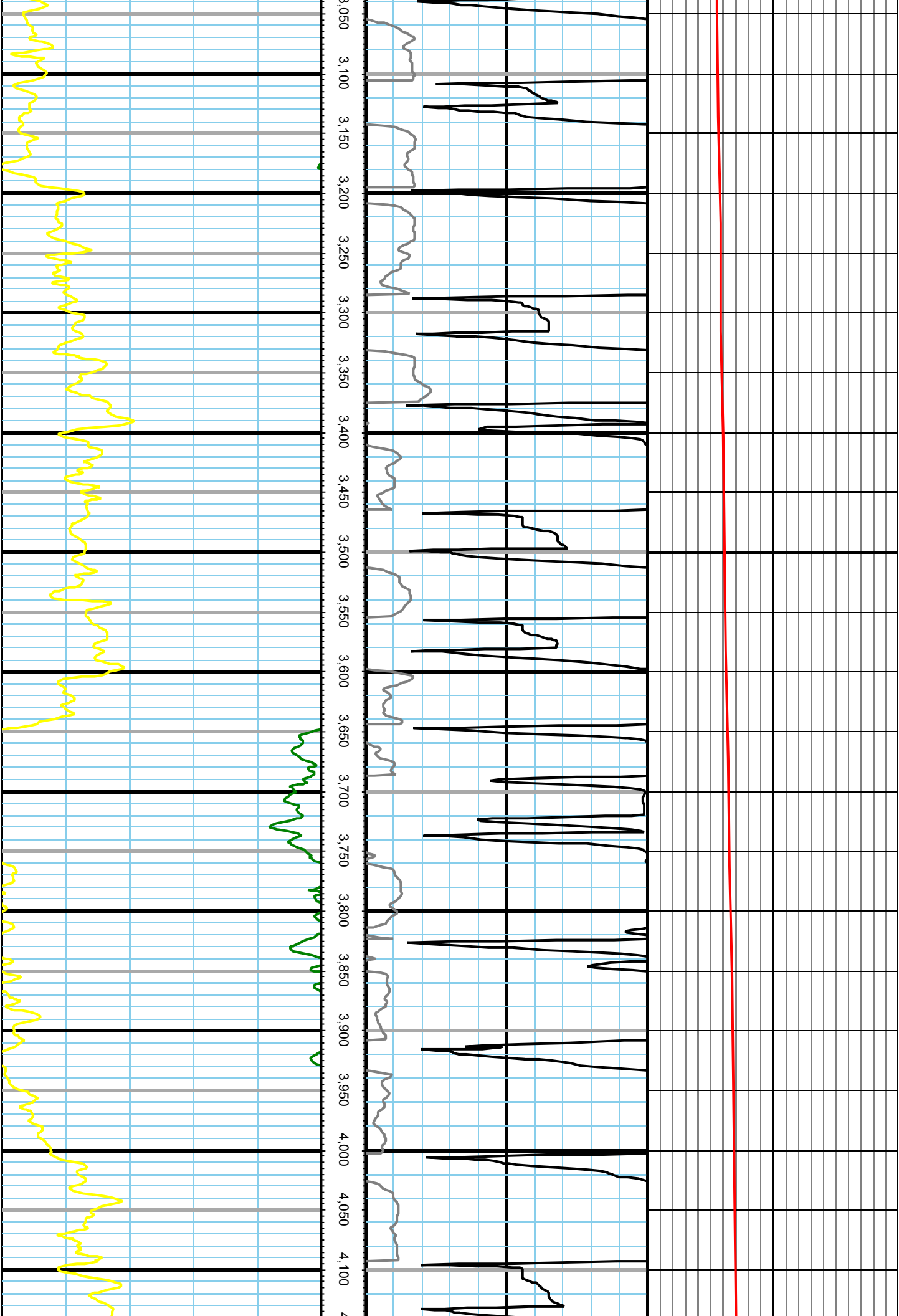
Night Hand: Kenneth Wagoner

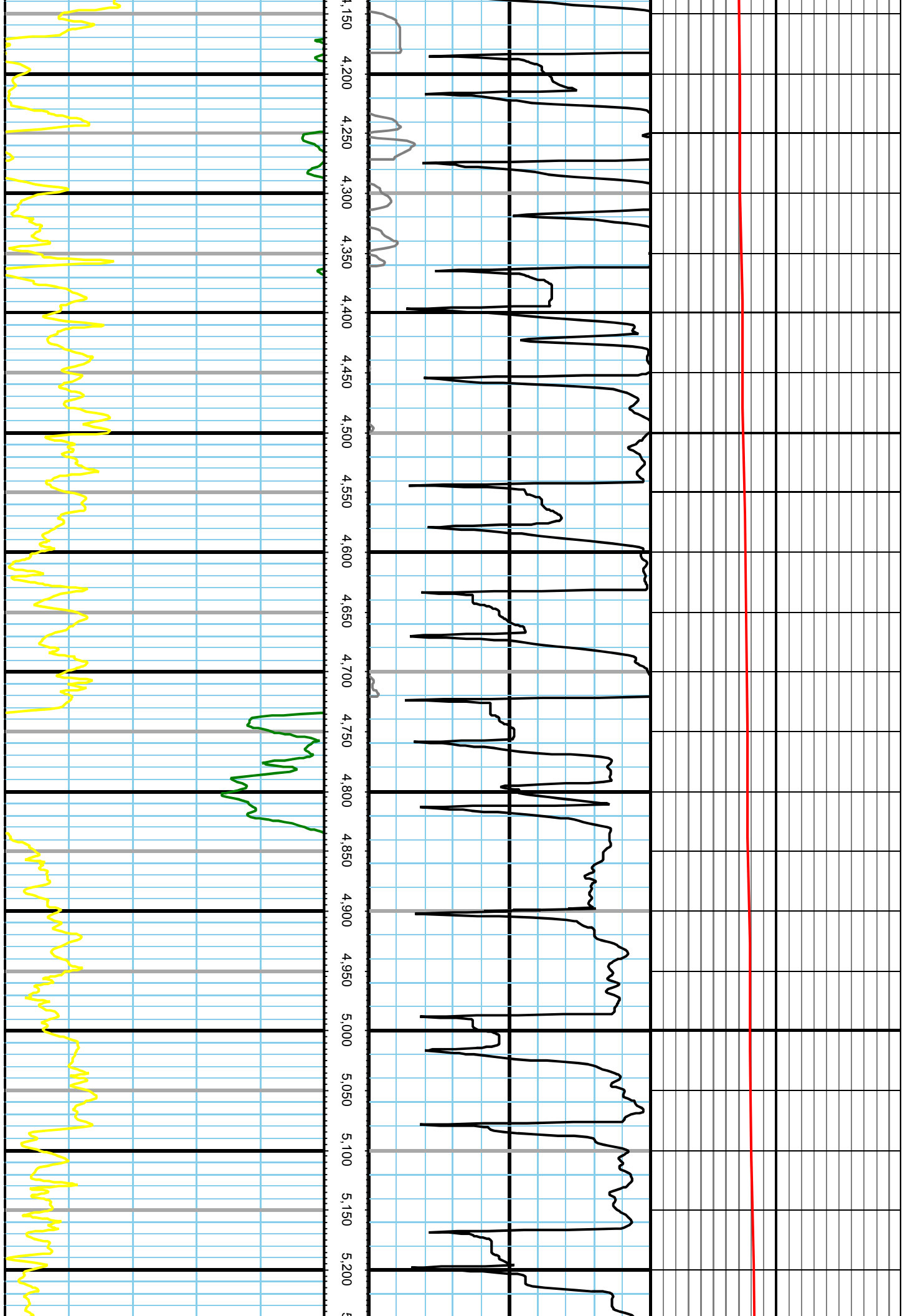
Tool Run Data	Run #1	Run #2	Run #3	Run #4	Run #5
Tool S/N	XGM0700				
Bit Size	7 7/8				
Cal Factor	8.0				
Survey Offset	60.00				
Gamma Offset	41.00				
Resistivity Offset	0.00				
Start Depth	1904.00				
StartDate	12/1/2020				
StartTime	00:00				
EndDepth	17962.00				
EndDate	12/4/2020				
EndTime	10:00				
Mud Type	OBM				
Mud Weight	9.25				
Funnel Viscosity	55@133				
Plastic Viscosity	12@150				
Yield Point	13				
Gel Strength	8/11/15				
Solids Content	9.1				
Chlorides	33200				
Temperature	253				

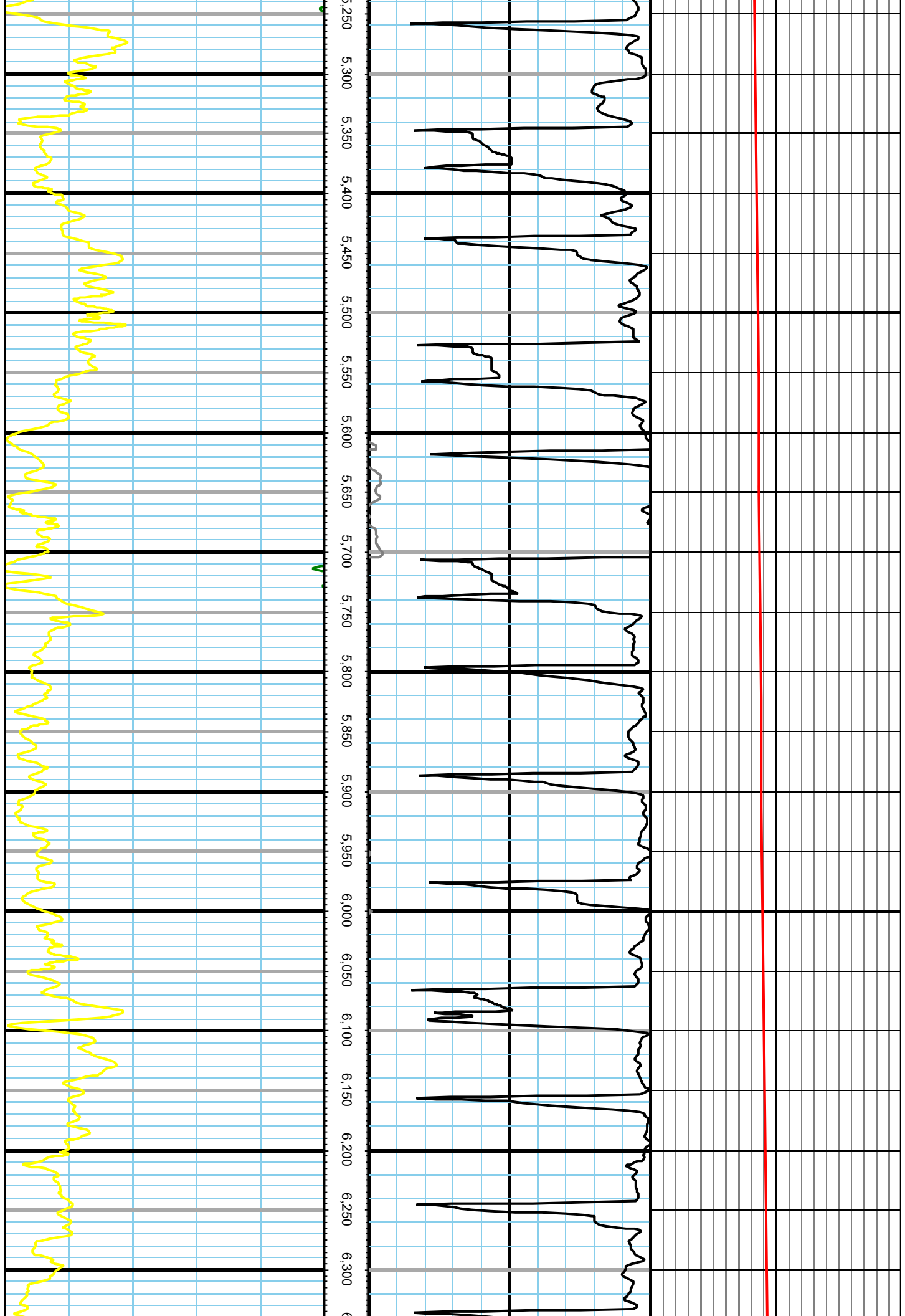
All interpretations are opinions based on inferences from electrical or other measurements and we cannot and do not guarantee the accuracy or correctness of any interpretation, and we shall not except in the case of gross or willful negligence on our part, be liable or responsible for any loss, cost damages or expenses incurred or sustained by anyone resulting from an interpretation made by any of our officers, agents, or employees.

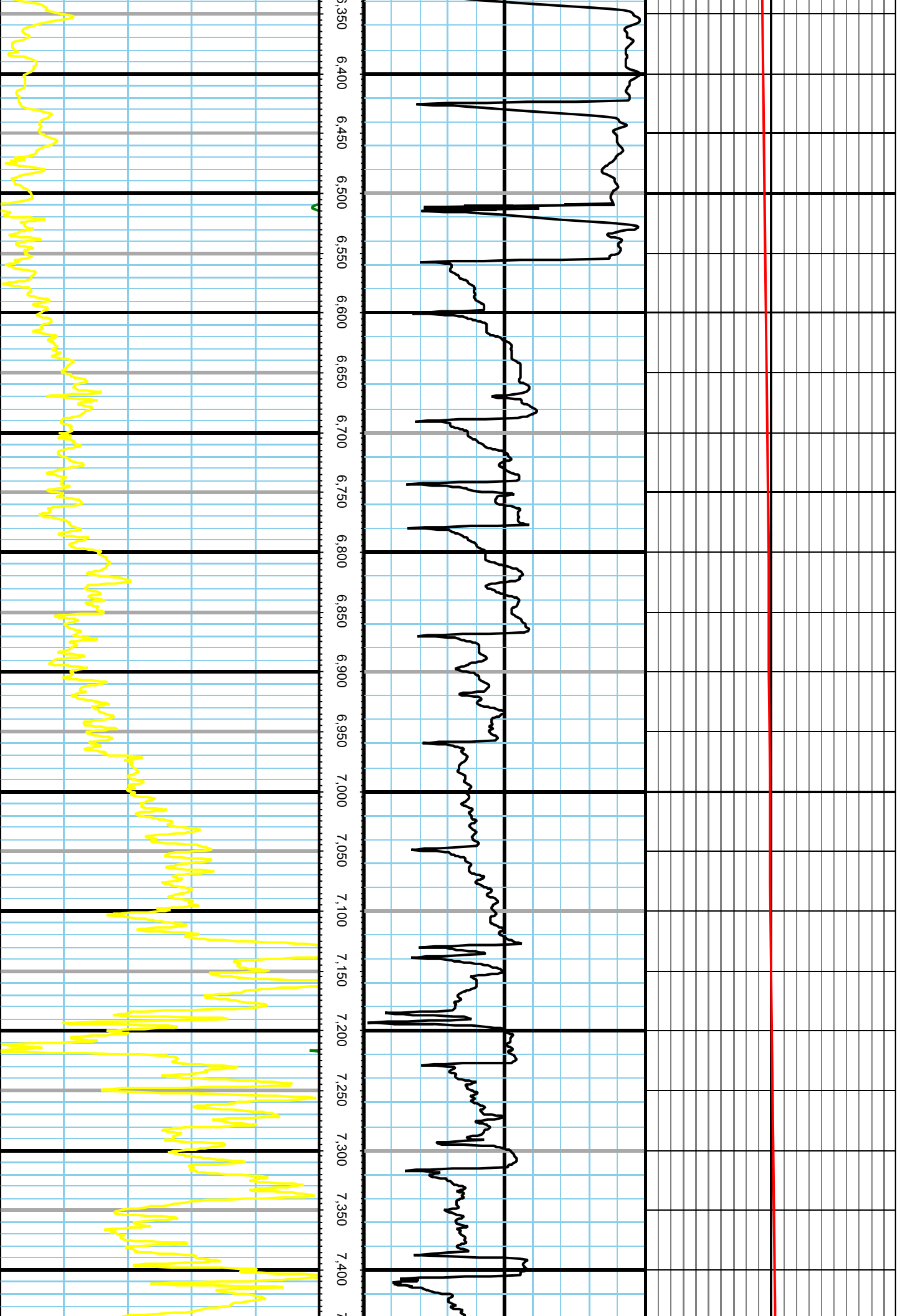


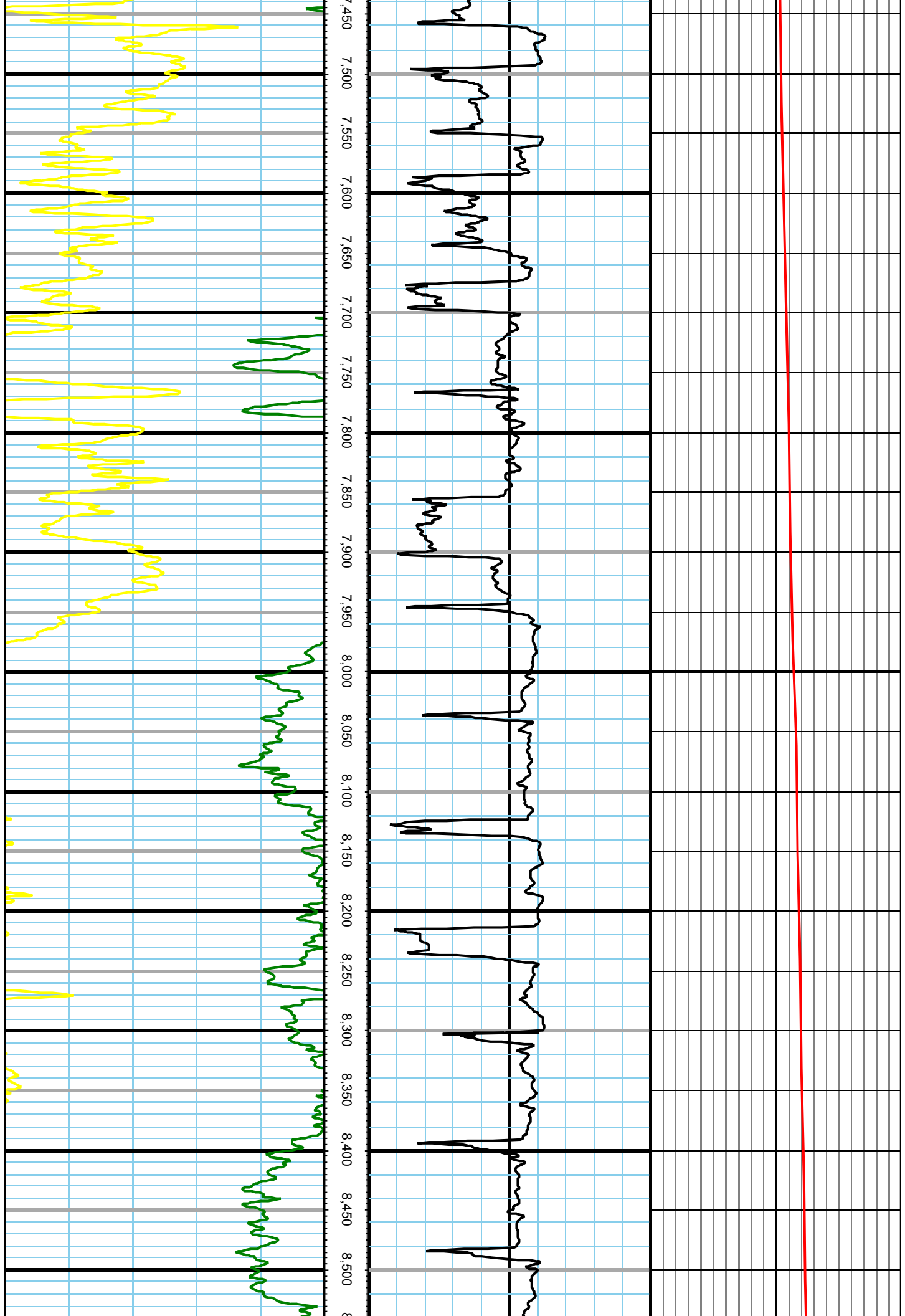


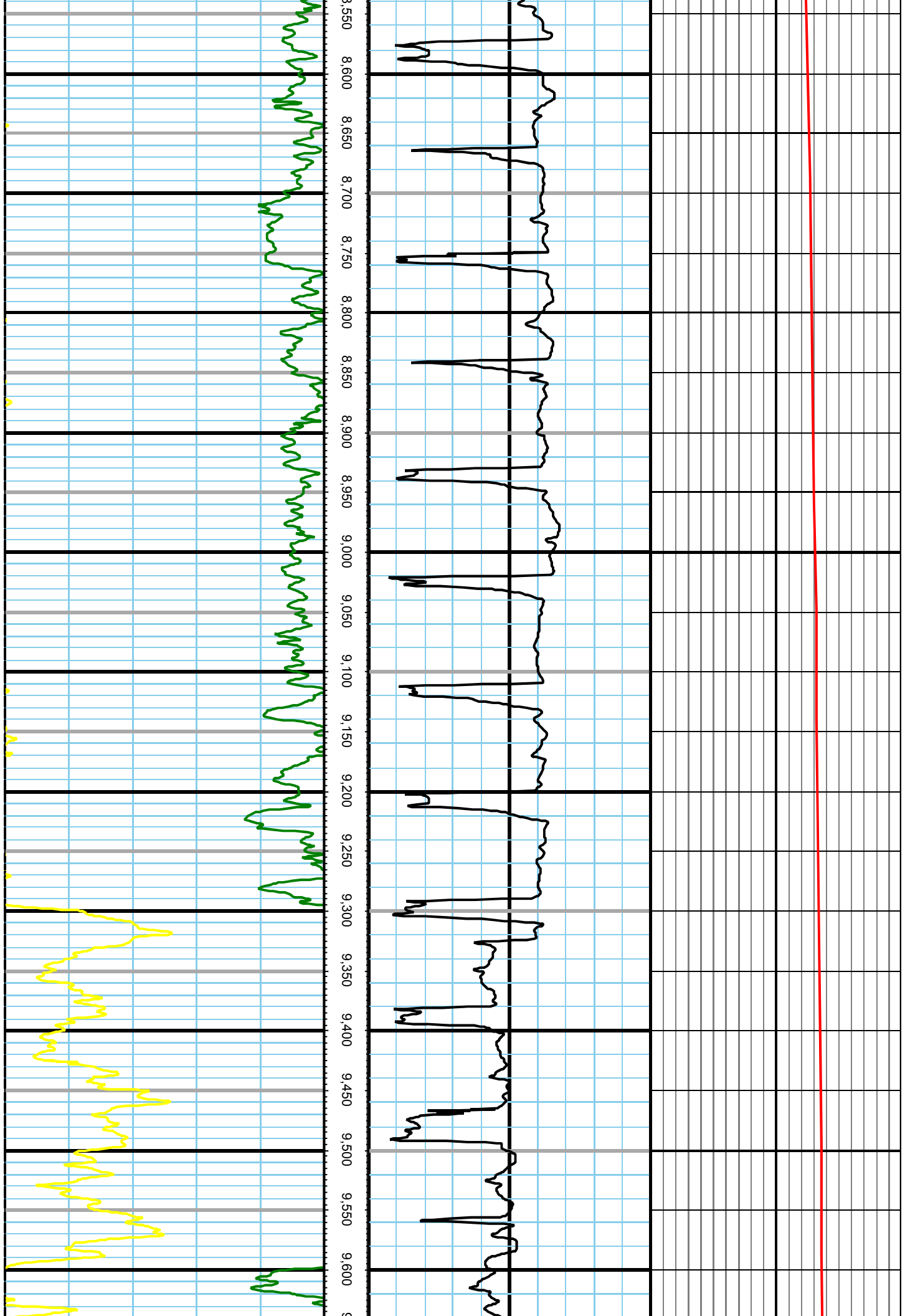


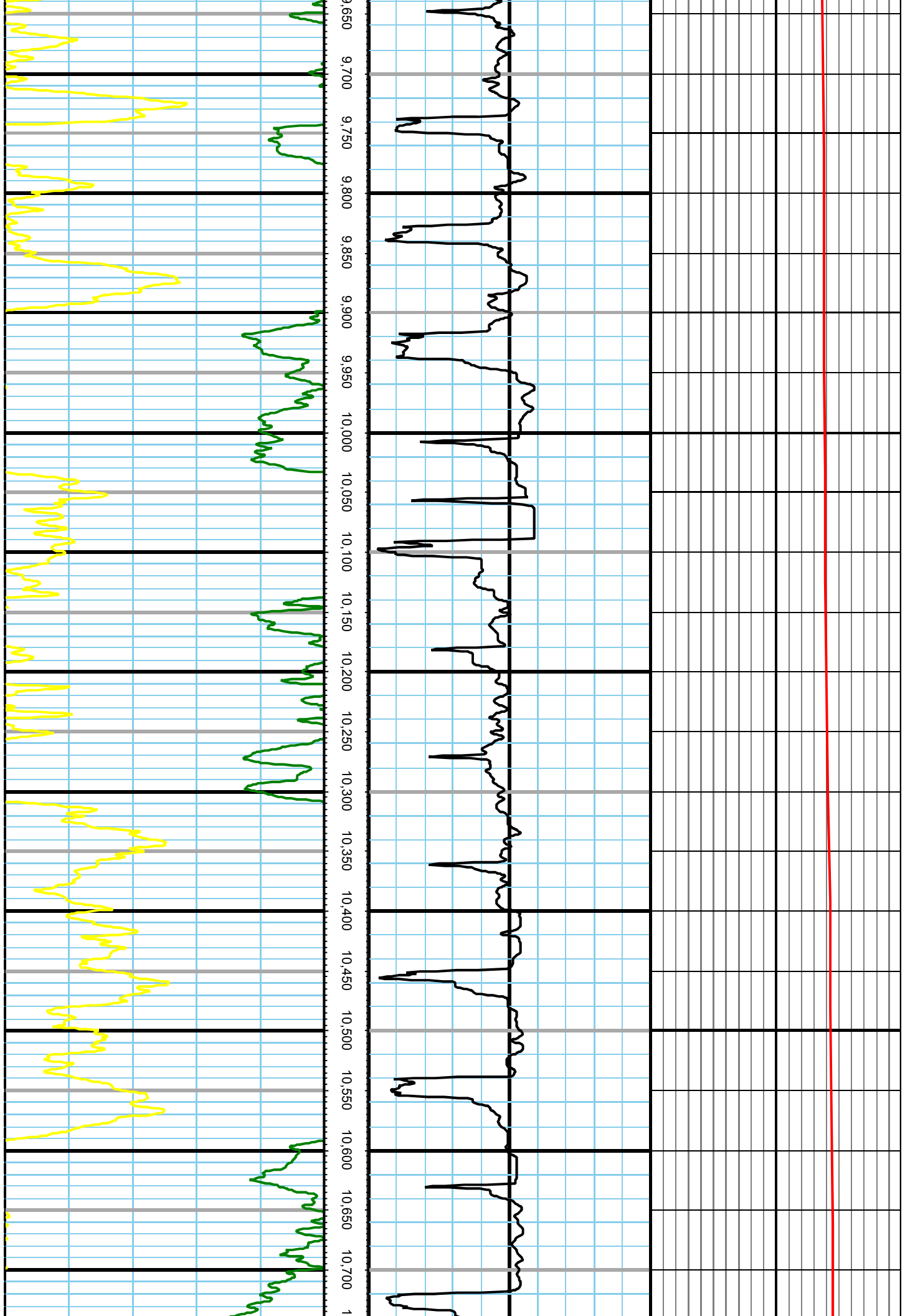


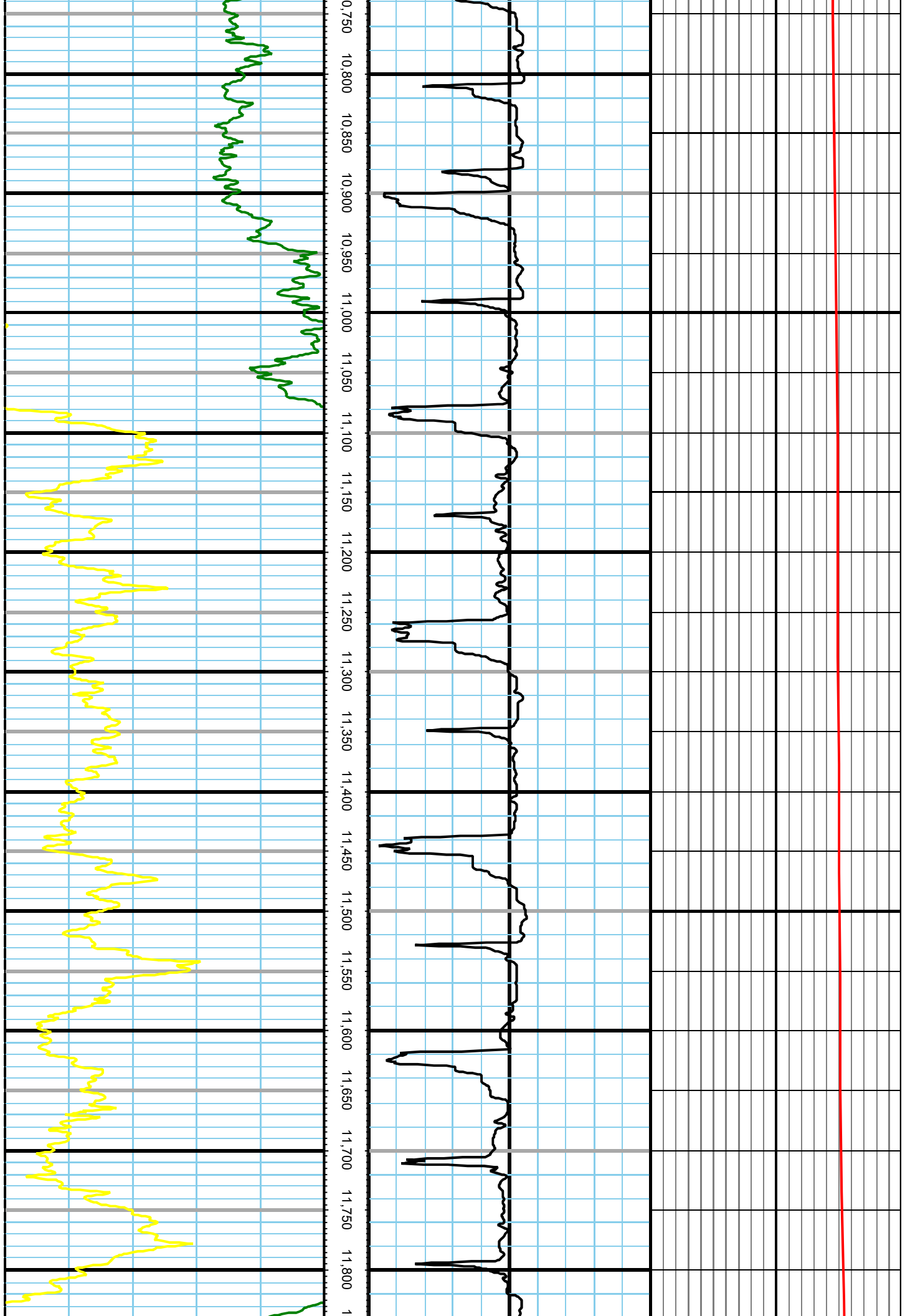


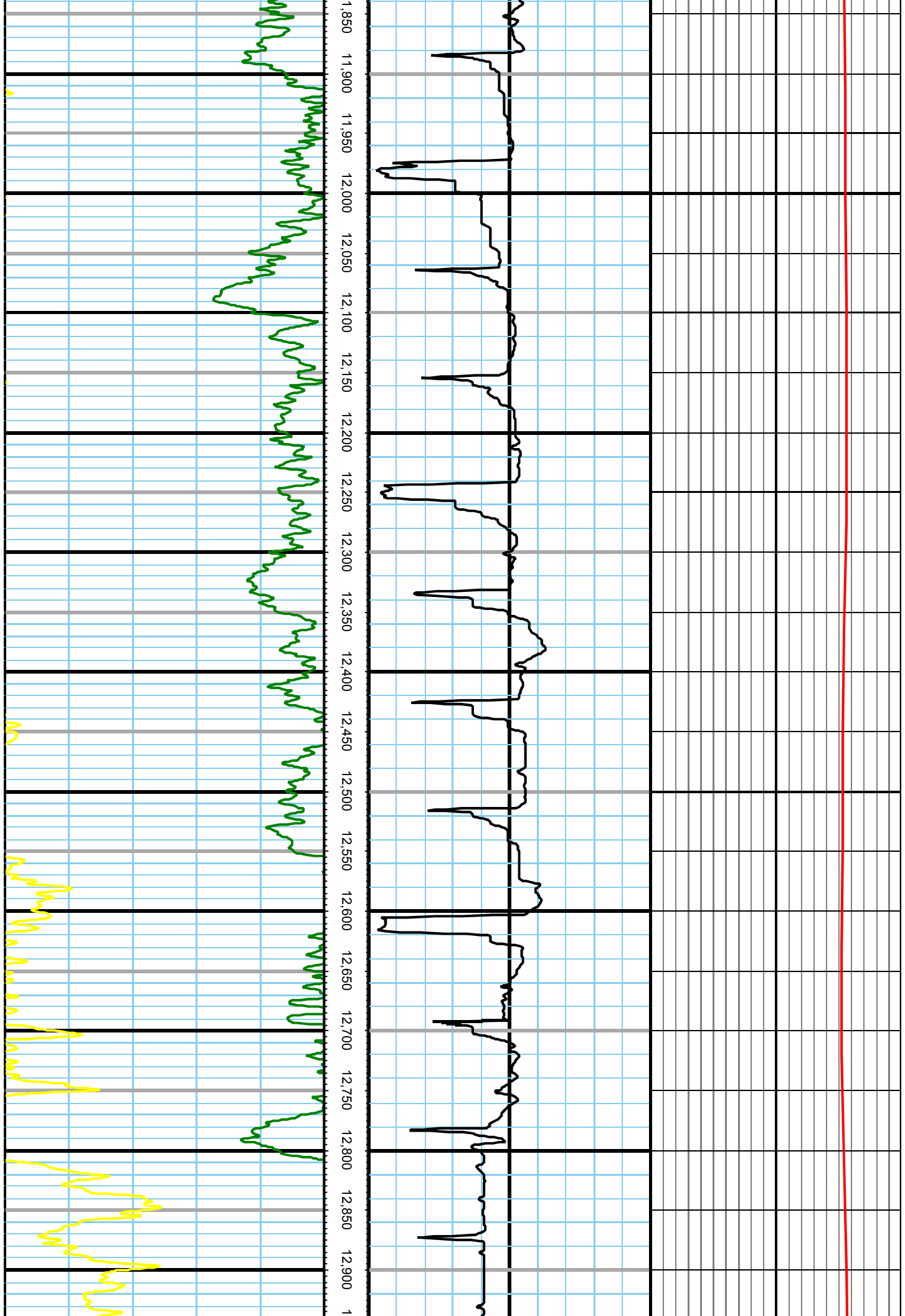


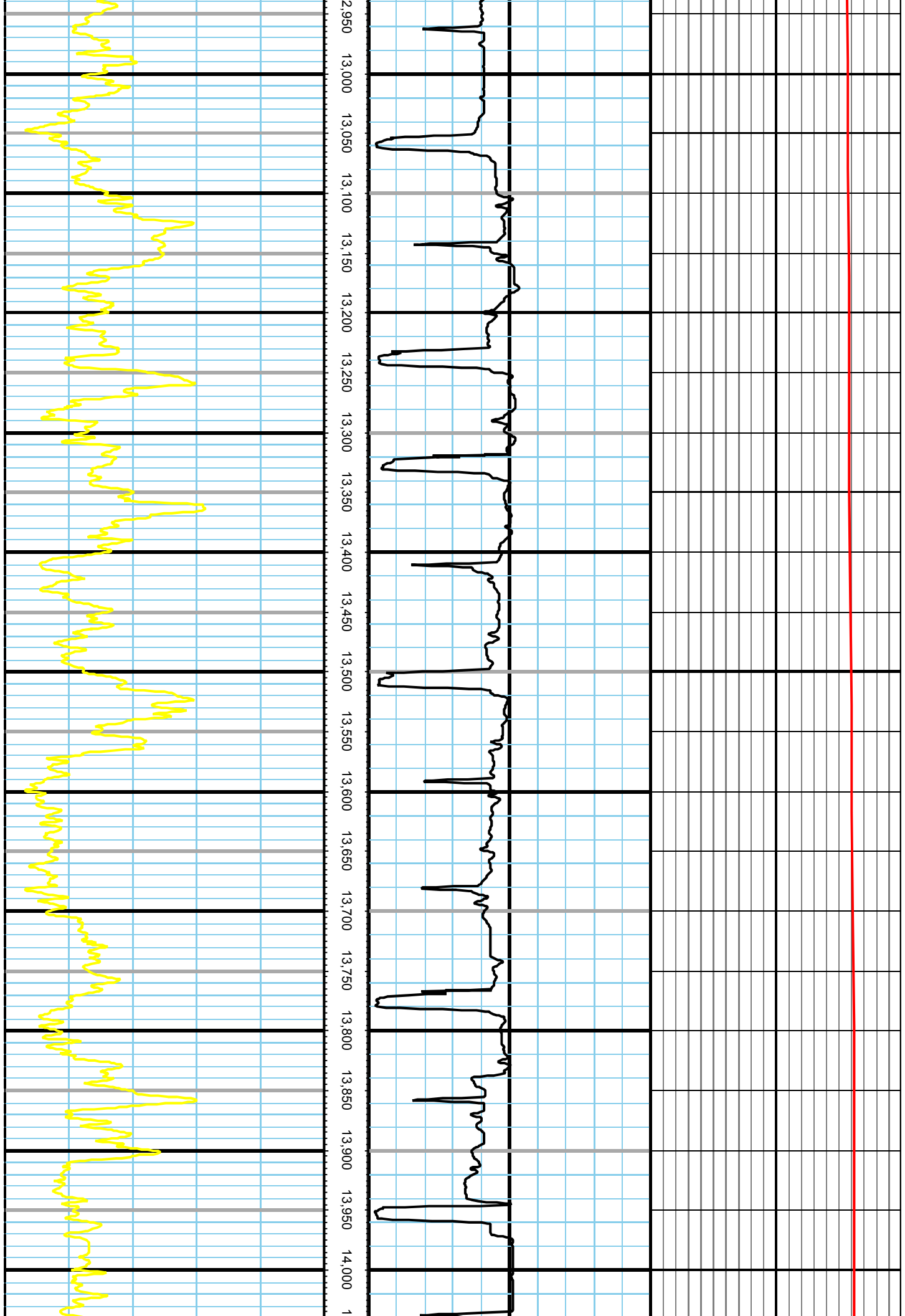


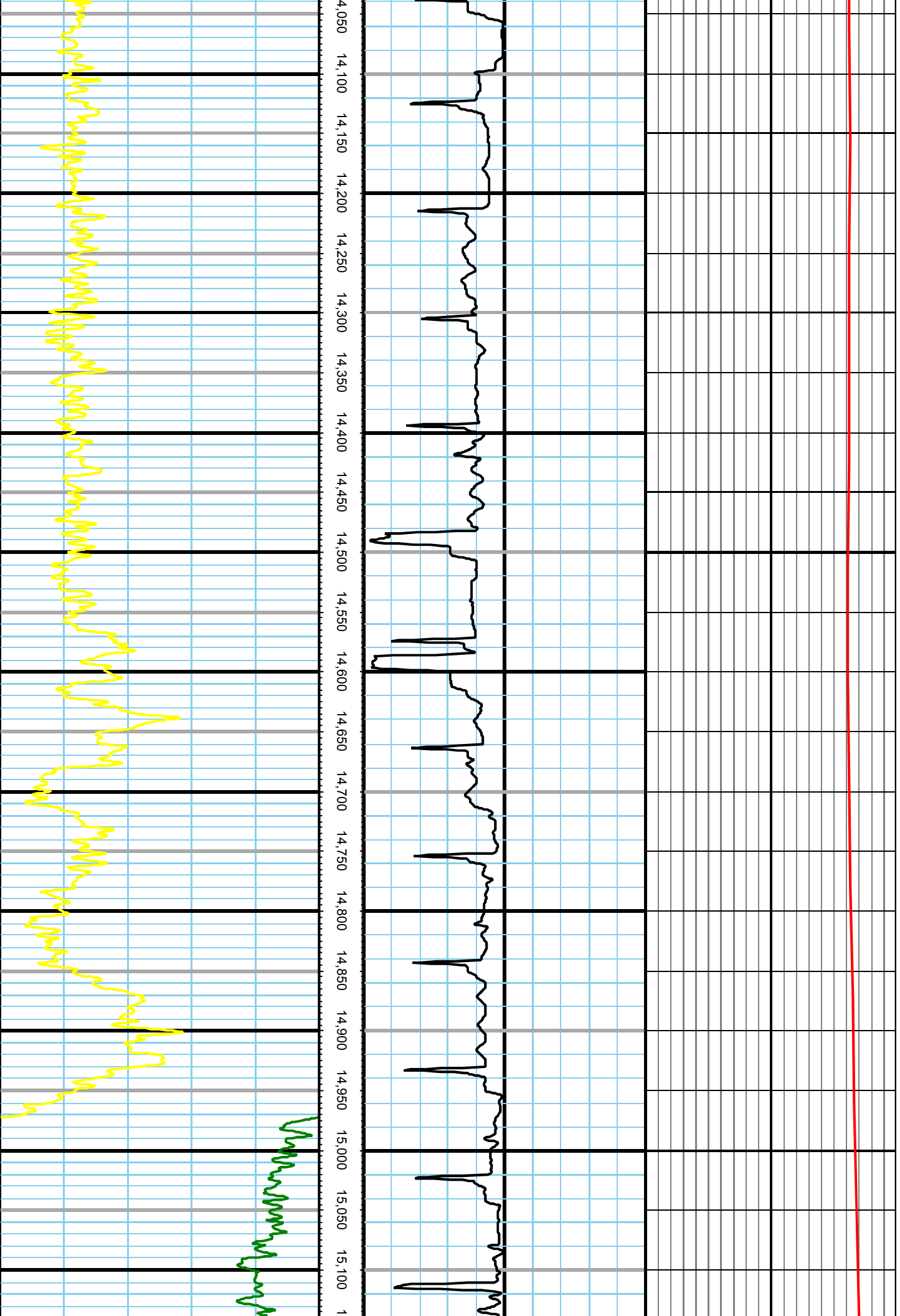


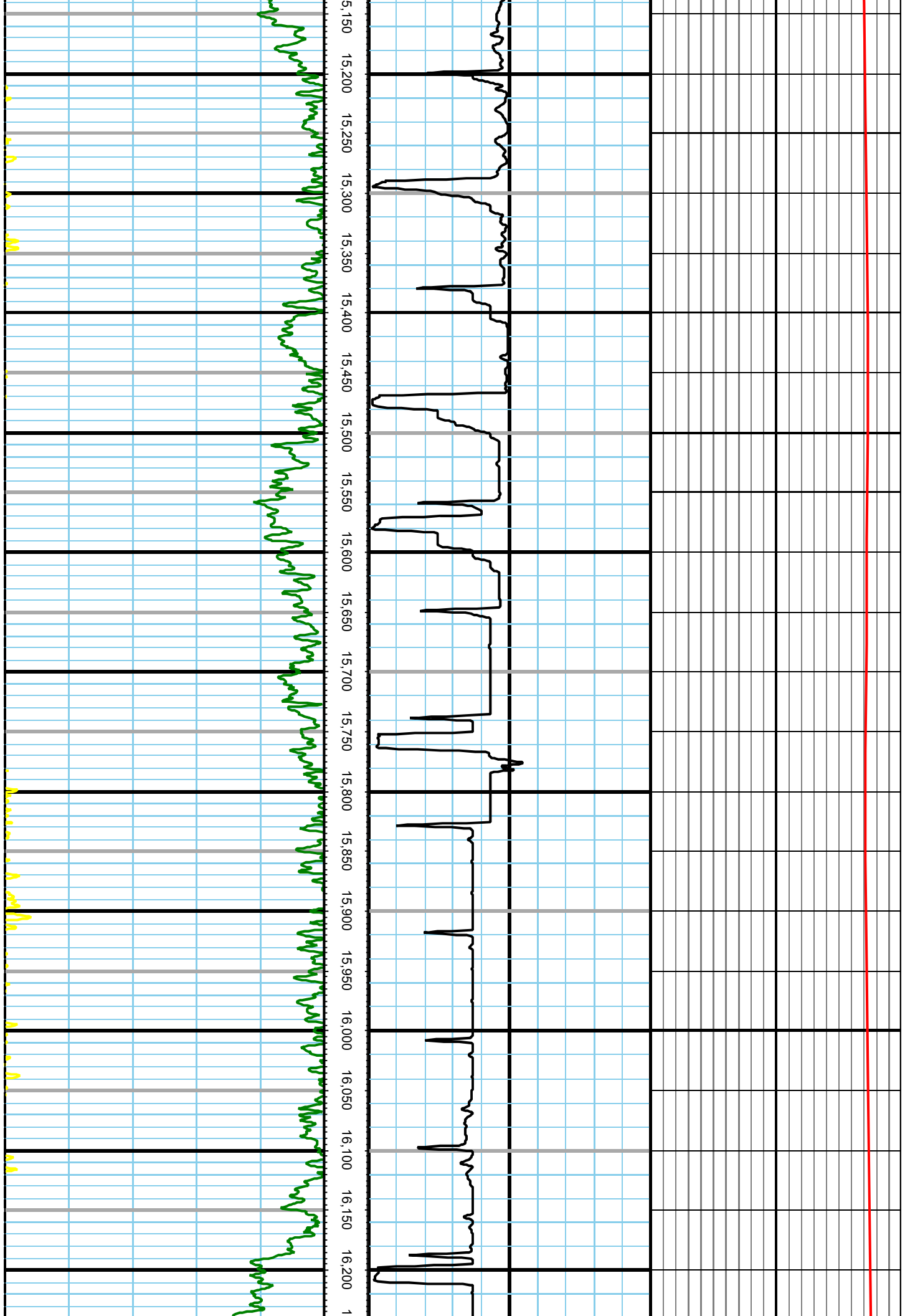


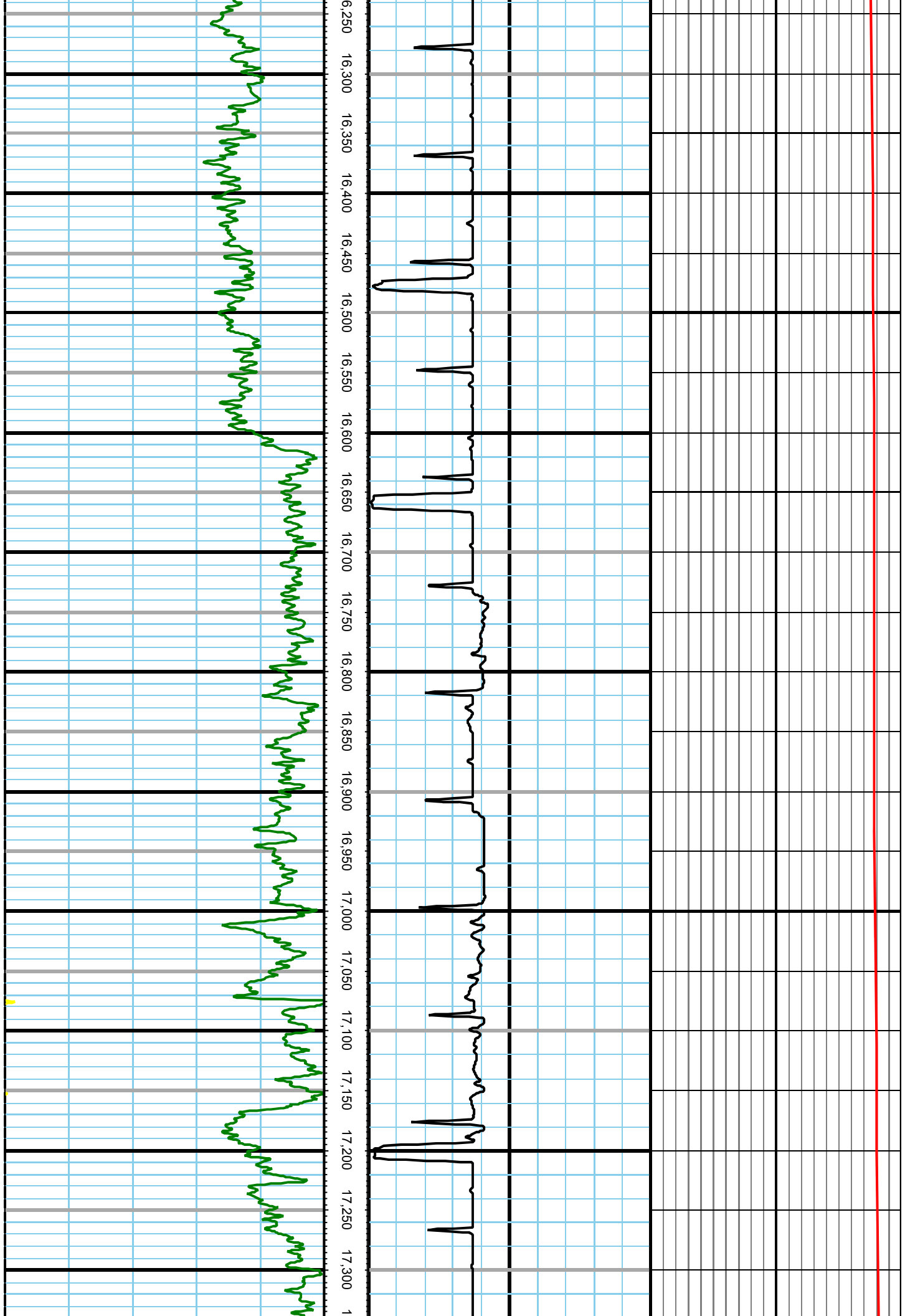


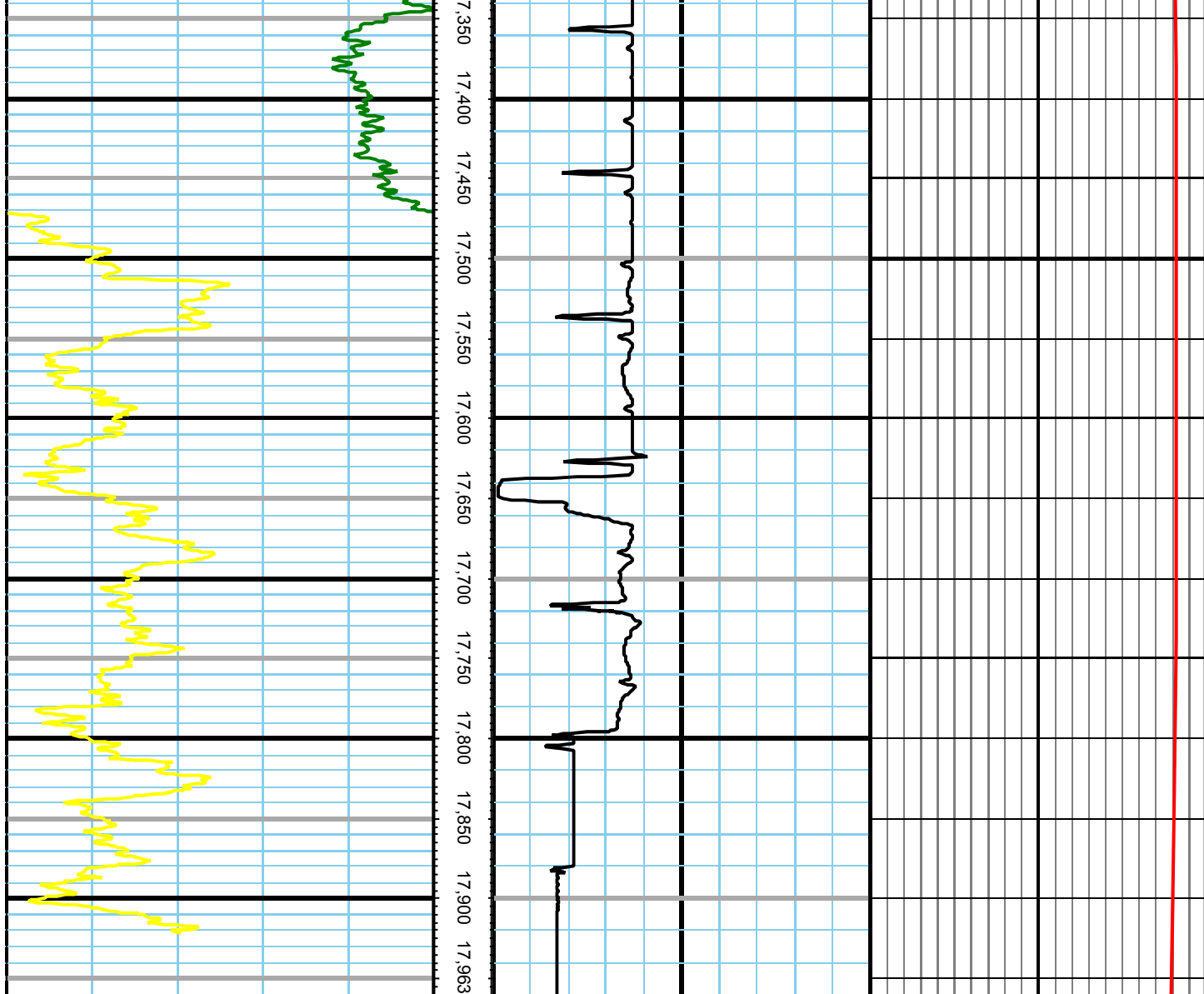












XEM Gamma 0.00 GR(API) 100.00 200.00
ROP 0.00 ROP(FT/HR) 800.00 1,600.00
XEM Temp 0.00 Degrees(deg F) 135.00 270.00