

Inspection Photos
Location Name: Dutch Lake 17-25H
Location ID: 422842



Photo 1 – Pumping Unit

Photo 2 – Tank Battery

Inspection Photos
Location Name: Dutch Lake 17-25H
Location ID: 422842



Colorado Oil and Gas Conservation Commission
40.46449, -104.27893, 4599.3ft, 196°
02/02/2021 12:34:10



Colorado Oil and Gas Conservation Commission
40.46443, -104.27889, 4610.5ft, 290°
02/02/2021 12:35:27

Photo 3 – Pumping Unit

Photo 4 – Riser Marked

Inspection Photos
Location Name: Dutch Lake 17-25H
Location ID: 422842

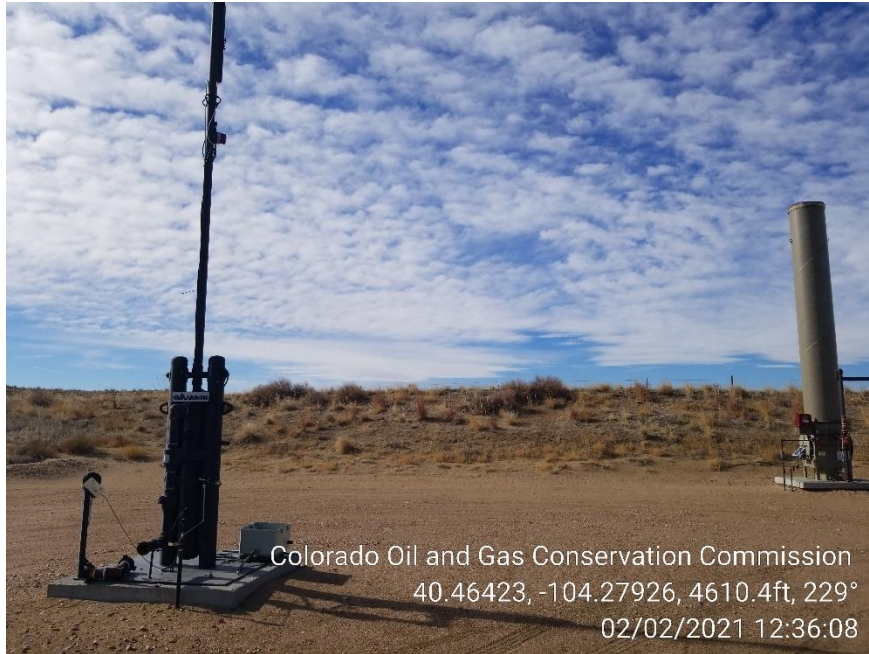


Photo 5 – Flare and ECD

Photo 6 – Separator and VRU

Inspection Photos
Location Name: Dutch Lake 17-25H
Location ID: 422842



Colorado Oil and Gas Conservation Commission
 40.4645, -104.27934, 4613.0ft, 230°
 02/02/2021 12:37:04



Colorado Oil and Gas Conservation Commission
 40.46448, -104.27929, 4617.0ft, 105°
 02/02/2021 12:38:02

Photo 7 – Risers Marked

Photo 8 – Gas Meter Calibration Card

Inspection Photos
Location Name: Dutch Lake 17-25H
Location ID: 422842

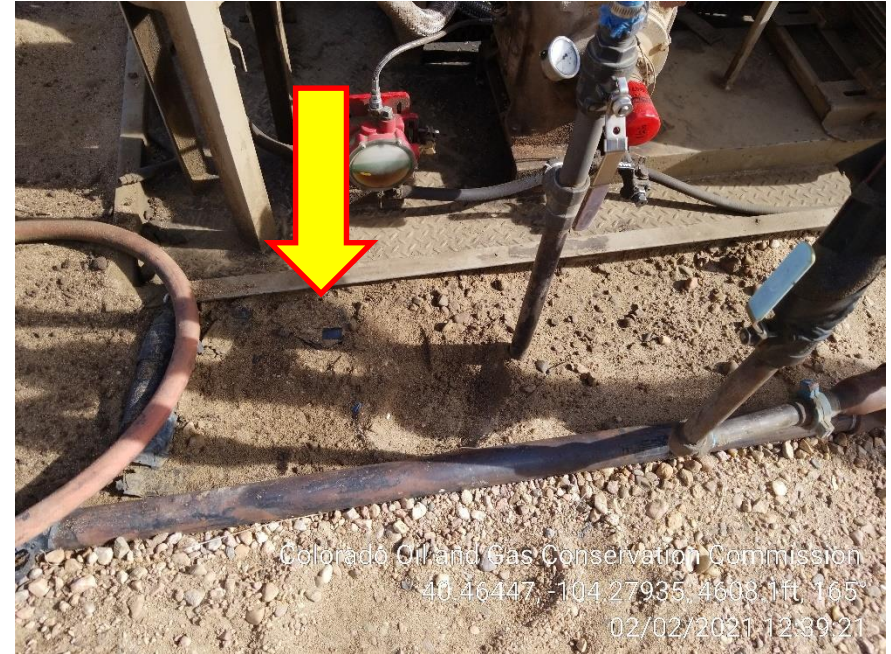


Photo 9 – VRU – Stained Soil

Photo 10 – VRU – Stained Soil

Inspection Photos
Location Name: Dutch Lake 17-25H
Location ID: 422842



Photo 11 – Tank Battery Signs

Photo 12 – North end of Loadline – Stained Soil

Inspection Photos
Location Name: Dutch Lake 17-25H
Location ID: 422842



Colorado Oil and Gas Conservation Commission
40.46481, -104.27928, 4604.5ft, 274°
02/02/2021 12:40:22

Photo 13 – Stained Soil at ECD Knockout Pot