



Pad Name: Calvary Farms 19-D Pad  
Well Name: Calvary Farms 01  
Ground Level: 4878.0  
SHL Latitude: 40° 33' 51.825 N  
SHL Longitude: 104° 41' 52.872 W

## SECTION DETAILS

Sec	MD	Inc	Azi	TVD	+N/-S	+E/-W	Dleg	TFace	VSec	Target
1	0.0	0.00	0.00	0.0	0.0	0.0	0.00	0.00	0.0	
2	1500.0	0.00	0.00	1500.0	0.0	0.0	0.00	0.00	0.0	
3	1675.1	3.50	97.80	1675.0	-0.7	5.3	2.00	97.80	5.3	
4	6569.3	3.50	97.80	6560.1	-41.3	301.4	0.00	0.00	301.9	
5	6744.4	0.00	90.46	6735.1	-42.0	306.7	2.00	180.00	307.2	
6	7647.4	90.30	90.46	7308.0	-46.6	882.7	10.00	0.00	883.2	Calvary Farms 1 LP
7	17177.4	90.30	90.46	7258.0	-122.4	10412.2	0.00	0.00	10412.9	Calvary Farms 1 PBHL

## DESIGN TARGET DETAILS

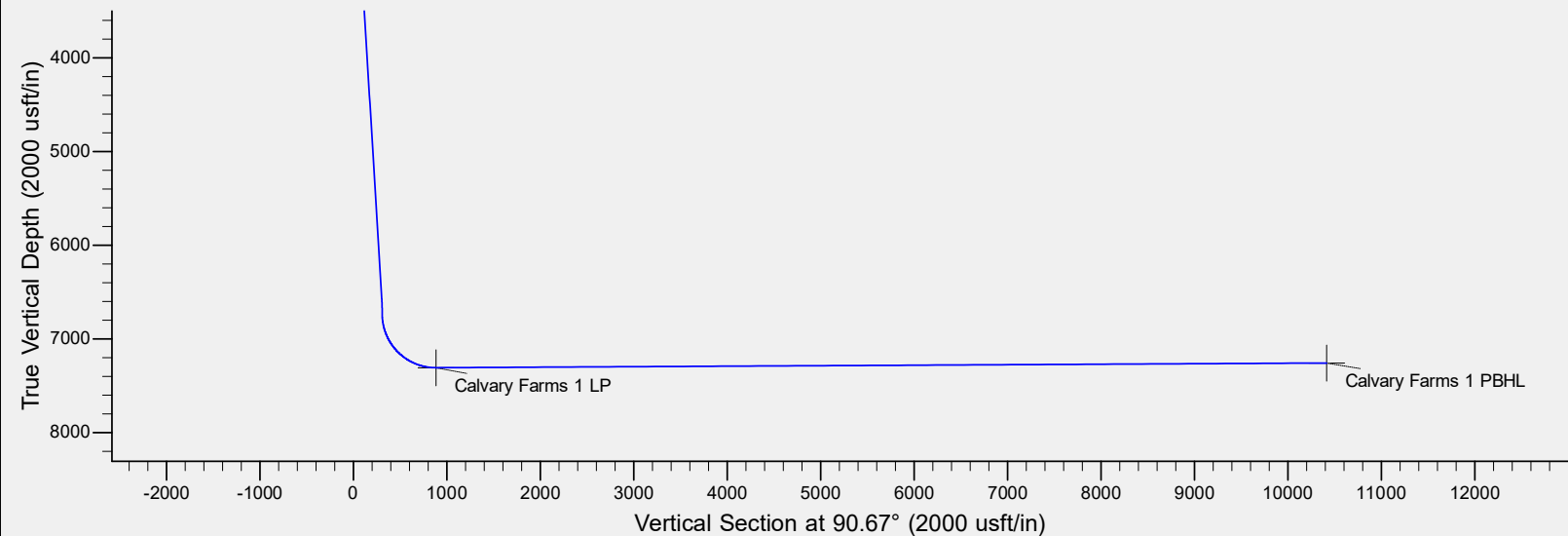
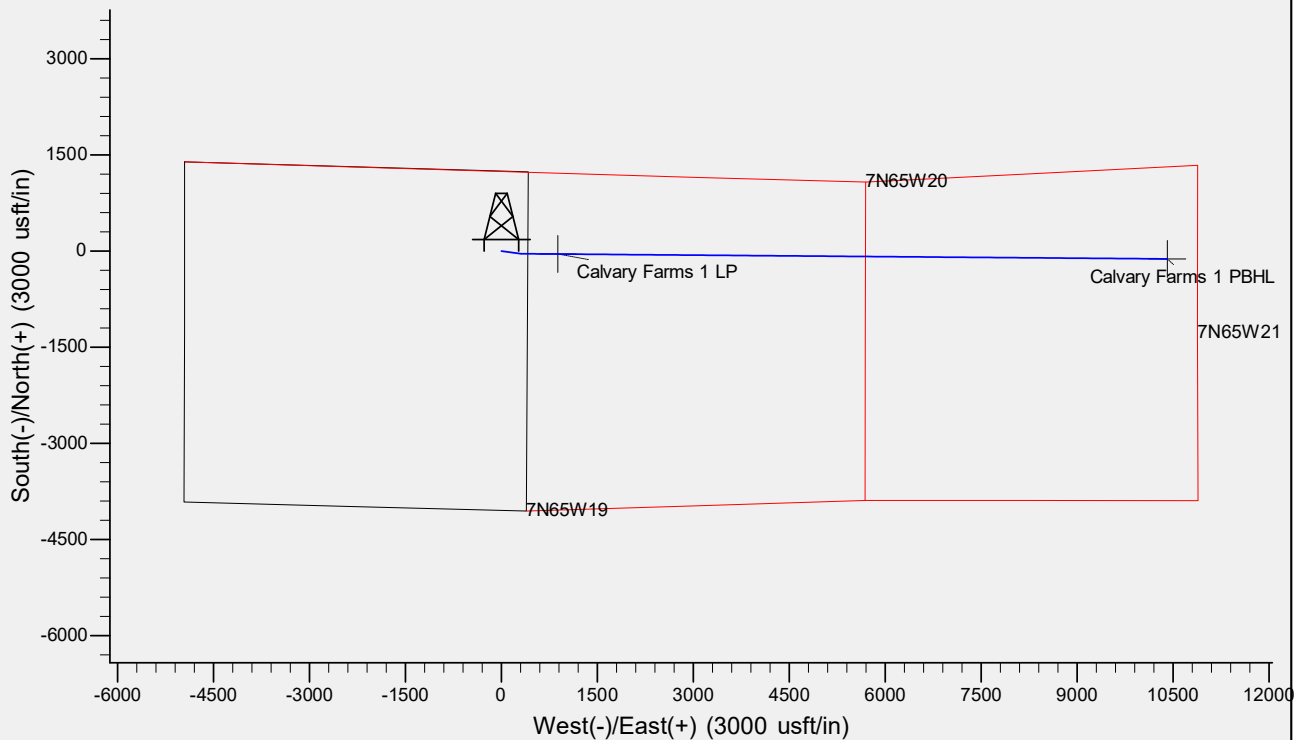
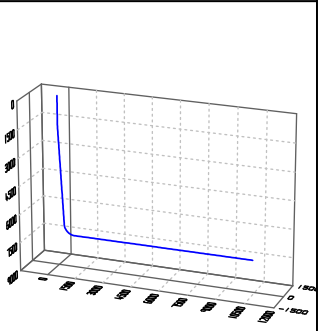
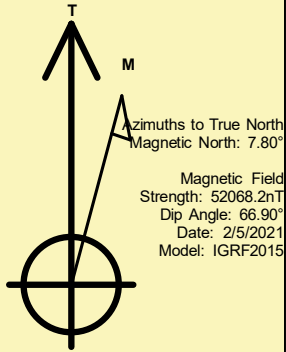
Name	TVD	+N/-S	+E/-W	Northing	Easting	Latitude	Longitude	Shape
Calvary Farms 1 LP	7308.0	-46.6	882.7	1449419.45	3223698.12	40° 33' 51.365 N	104° 41' 41.435 W	Point
Calvary Farms 1 PBHL	- plan hits target center 7258.0	-122.4	10412.2	1449429.86	3233227.93	40° 33' 50.594 N	104° 39' 37.958 W	Point
	- plan hits target center							

## REFERENCE INFORMATION

Co-ordinate (N/E) Reference: Well Calvary Farms 01, True North  
Vertical (TVD) Reference: WELL @ 4898.0usft (Original Well Elev)  
Section (VS) Reference: Slot - (0.0N, 0.0E)  
Measured Depth Reference: WELL @ 4898.0usft (Original Well Elev)  
Calculation Method: Minimum Curvature

## CASING DETAILS

No casing data is available



# **Bayswater Exploration & Production, LLC**

**DJ Basin**

**Calvary Farms 19-D Pad**

**Calvary Farms 01**

**Wellbore #1**

**Plan: Design #1**

## **Standard Planning Report**

**07 February, 2021**

# Bayswater Exploration & Production LLC

## Planning Report

<b>Database:</b>	edm	<b>Local Co-ordinate Reference:</b>	Well Calvary Farms 01
<b>Company:</b>	Bayswater Exploration & Production, LLC	<b>TVD Reference:</b>	WELL @ 4898.0usft (Original Well Elev)
<b>Project:</b>	DJ Basin	<b>MD Reference:</b>	WELL @ 4898.0usft (Original Well Elev)
<b>Site:</b>	Calvary Farms 19-D Pad	<b>North Reference:</b>	True
<b>Well:</b>	Calvary Farms 01	<b>Survey Calculation Method:</b>	Minimum Curvature
<b>Wellbore:</b>	Wellbore #1		
<b>Design:</b>	Design #1		

<b>Project</b>	DJ Basin, DJ Basin		
<b>Map System:</b>	US State Plane 1983	<b>System Datum:</b>	Mean Sea Level
<b>Geo Datum:</b>	North American Datum 1983		
<b>Map Zone:</b>	Colorado Northern Zone		

Site	Calvary Farms 19-D Pad				
Site Position:		Northing:	1,449,458.09 usft	Latitude:	40° 33' 51.826 N
From:	Lat/Long	Easting:	3,222,815.05 usft	Longitude:	104° 41' 52.872 W
Position Uncertainty:	0.0 usft	Slot Radius:	13-3/16 "	Grid Convergence:	0.52 °

Well	Calvary Farms 01					
Well Position	+N/-S	0.0 usft	Northing:	1,449,458.08 usft	Latitude:	40° 33' 51.825 N
	+E/-W	0.0 usft	Easting:	3,222,815.05 usft	Longitude:	104° 41' 52.872 W
Position Uncertainty		0.0 usft	Wellhead Elevation:		Ground Level:	4,878.0 usft

<b>Wellbore</b>	Wellbore #1				
<b>Magnetics</b>	<b>Model Name</b>	<b>Sample Date</b>	<b>Declination (°)</b>	<b>Dip Angle (°)</b>	<b>Field Strength (nT)</b>
	IGRF2015	2/5/2021	7.80	66.90	52,068.24749955

Design	Design #1			
Audit Notes:				
Version:	Phase:	PLAN	Tie On Depth:	0.0
Vertical Section:	Depth From (TVD) (usft)	+N/-S (usft)	+E/-W (usft)	Direction (°)
	0.0	0.0	0.0	90.67

<b>Plan Survey Tool Program</b>	<b>Date</b>	2/5/2021			
<b>Depth From (usft)</b>	<b>Depth To (usft)</b>	<b>Survey (Wellbore)</b>	<b>Tool Name</b>	<b>Remarks</b>	
1	0.0	17,177.4	Design #1 (Wellbore #1)	MWD	
			OWSG MWD - Standard		

<b>Plan Sections</b>										
<b>Measured Depth (usft)</b>	<b>Inclination (°)</b>	<b>Azimuth (°)</b>	<b>Vertical Depth (usft)</b>	<b>+N/-S (usft)</b>	<b>+E/-W (usft)</b>	<b>Dogleg Rate (°/100usft)</b>	<b>Build Rate (°/100usft)</b>	<b>Turn Rate (°/100usft)</b>	<b>TFO (°)</b>	<b>Target</b>
0.0	0.00	0.00	0.0	0.0	0.0	0.00	0.00	0.00	0.00	
1,500.0	0.00	0.00	1,500.0	0.0	0.0	0.00	0.00	0.00	0.00	
1,675.1	3.50	97.80	1,675.0	-0.7	5.3	2.00	2.00	0.00	97.80	
6,569.3	3.50	97.80	6,560.1	-41.3	301.4	0.00	0.00	0.00	0.00	
6,744.4	0.00	90.46	6,735.0	-42.0	306.7	2.00	-2.00	0.00	180.00	
7,647.4	90.30	90.46	7,308.0	-46.6	882.7	10.00	10.00	0.00	0.00	Calvary Farms 1 LP
17,177.4	90.30	90.46	7,258.0	-122.4	10,412.2	0.00	0.00	0.00	0.00	Calvary Farms 1 PBH

# Bayswater Exploration & Production LLC

## Planning Report

<b>Database:</b>	edm	<b>Local Co-ordinate Reference:</b>	Well Calvary Farms 01
<b>Company:</b>	Bayswater Exploration & Production, LLC	<b>TVD Reference:</b>	WELL @ 4898.0usft (Original Well Elev)
<b>Project:</b>	DJ Basin	<b>MD Reference:</b>	WELL @ 4898.0usft (Original Well Elev)
<b>Site:</b>	Calvary Farms 19-D Pad	<b>North Reference:</b>	True
<b>Well:</b>	Calvary Farms 01	<b>Survey Calculation Method:</b>	Minimum Curvature
<b>Wellbore:</b>	Wellbore #1		
<b>Design:</b>	Design #1		

Planned Survey									
Measured Depth (usft)	Inclination (°)	Azimuth (°)	Vertical Depth (usft)	+N/-S (usft)	+E/-W (usft)	Vertical Section (usft)	Dogleg Rate (°/100usft)	Build Rate (°/100usft)	Turn Rate (°/100usft)
0.0	0.00	0.00	0.0	0.0	0.0	0.0	0.00	0.00	0.00
100.0	0.00	0.00	100.0	0.0	0.0	0.0	0.00	0.00	0.00
200.0	0.00	0.00	200.0	0.0	0.0	0.0	0.00	0.00	0.00
300.0	0.00	0.00	300.0	0.0	0.0	0.0	0.00	0.00	0.00
400.0	0.00	0.00	400.0	0.0	0.0	0.0	0.00	0.00	0.00
500.0	0.00	0.00	500.0	0.0	0.0	0.0	0.00	0.00	0.00
600.0	0.00	0.00	600.0	0.0	0.0	0.0	0.00	0.00	0.00
700.0	0.00	0.00	700.0	0.0	0.0	0.0	0.00	0.00	0.00
800.0	0.00	0.00	800.0	0.0	0.0	0.0	0.00	0.00	0.00
900.0	0.00	0.00	900.0	0.0	0.0	0.0	0.00	0.00	0.00
1,000.0	0.00	0.00	1,000.0	0.0	0.0	0.0	0.00	0.00	0.00
1,100.0	0.00	0.00	1,100.0	0.0	0.0	0.0	0.00	0.00	0.00
1,200.0	0.00	0.00	1,200.0	0.0	0.0	0.0	0.00	0.00	0.00
1,300.0	0.00	0.00	1,300.0	0.0	0.0	0.0	0.00	0.00	0.00
1,400.0	0.00	0.00	1,400.0	0.0	0.0	0.0	0.00	0.00	0.00
1,500.0	0.00	0.00	1,500.0	0.0	0.0	0.0	0.00	0.00	0.00
1,600.0	2.00	97.80	1,600.0	-0.2	1.7	1.7	2.00	2.00	0.00
1,675.1	3.50	97.80	1,675.0	-0.7	5.3	5.3	2.00	2.00	0.00
1,700.0	3.50	97.80	1,699.8	-0.9	6.8	6.8	0.00	0.00	0.00
1,800.0	3.50	97.80	1,799.7	-1.8	12.9	12.9	0.00	0.00	0.00
1,900.0	3.50	97.80	1,899.5	-2.6	18.9	18.9	0.00	0.00	0.00
2,000.0	3.50	97.80	1,999.3	-3.4	25.0	25.0	0.00	0.00	0.00
2,100.0	3.50	97.80	2,099.1	-4.2	31.0	31.1	0.00	0.00	0.00
2,200.0	3.50	97.80	2,198.9	-5.1	37.1	37.1	0.00	0.00	0.00
2,300.0	3.50	97.80	2,298.7	-5.9	43.1	43.2	0.00	0.00	0.00
2,400.0	3.50	97.80	2,398.5	-6.7	49.2	49.2	0.00	0.00	0.00
2,500.0	3.50	97.80	2,498.4	-7.6	55.2	55.3	0.00	0.00	0.00
2,600.0	3.50	97.80	2,598.2	-8.4	61.3	61.4	0.00	0.00	0.00
2,700.0	3.50	97.80	2,698.0	-9.2	67.3	67.4	0.00	0.00	0.00
2,800.0	3.50	97.80	2,797.8	-10.1	73.4	73.5	0.00	0.00	0.00
2,900.0	3.50	97.80	2,897.6	-10.9	79.4	79.5	0.00	0.00	0.00
3,000.0	3.50	97.80	2,997.4	-11.7	85.5	85.6	0.00	0.00	0.00
3,100.0	3.50	97.80	3,097.2	-12.5	91.5	91.7	0.00	0.00	0.00
3,200.0	3.50	97.80	3,197.0	-13.4	97.6	97.7	0.00	0.00	0.00
3,300.0	3.50	97.80	3,296.9	-14.2	103.6	103.8	0.00	0.00	0.00
3,400.0	3.50	97.80	3,396.7	-15.0	109.7	109.8	0.00	0.00	0.00
3,500.0	3.50	97.80	3,496.5	-15.9	115.7	115.9	0.00	0.00	0.00
3,600.0	3.50	97.80	3,596.3	-16.7	121.8	122.0	0.00	0.00	0.00
3,700.0	3.50	97.80	3,696.1	-17.5	127.8	128.0	0.00	0.00	0.00
3,800.0	3.50	97.80	3,795.9	-18.3	133.9	134.1	0.00	0.00	0.00
3,900.0	3.50	97.80	3,895.7	-19.2	139.9	140.1	0.00	0.00	0.00
4,000.0	3.50	97.80	3,995.6	-20.0	146.0	146.2	0.00	0.00	0.00
4,100.0	3.50	97.80	4,095.4	-20.8	152.0	152.3	0.00	0.00	0.00
4,200.0	3.50	97.80	4,195.2	-21.7	158.1	158.3	0.00	0.00	0.00
4,300.0	3.50	97.80	4,295.0	-22.5	164.1	164.4	0.00	0.00	0.00
4,400.0	3.50	97.80	4,394.8	-23.3	170.2	170.4	0.00	0.00	0.00
4,500.0	3.50	97.80	4,494.6	-24.1	176.2	176.5	0.00	0.00	0.00
4,600.0	3.50	97.80	4,594.4	-25.0	182.3	182.6	0.00	0.00	0.00
4,700.0	3.50	97.80	4,694.2	-25.8	188.3	188.6	0.00	0.00	0.00
4,800.0	3.50	97.80	4,794.1	-26.6	194.4	194.7	0.00	0.00	0.00
4,900.0	3.50	97.80	4,893.9	-27.5	200.4	200.7	0.00	0.00	0.00
5,000.0	3.50	97.80	4,993.7	-28.3	206.5	206.8	0.00	0.00	0.00
5,100.0	3.50	97.80	5,093.5	-29.1	212.5	212.9	0.00	0.00	0.00
5,200.0	3.50	97.80	5,193.3	-29.9	218.6	218.9	0.00	0.00	0.00

# Bayswater Exploration & Production LLC

## Planning Report

<b>Database:</b>	edm	<b>Local Co-ordinate Reference:</b>	Well Calvary Farms 01
<b>Company:</b>	Bayswater Exploration & Production, LLC	<b>TVD Reference:</b>	WELL @ 4898.0usft (Original Well Elev)
<b>Project:</b>	DJ Basin	<b>MD Reference:</b>	WELL @ 4898.0usft (Original Well Elev)
<b>Site:</b>	Calvary Farms 19-D Pad	<b>North Reference:</b>	True
<b>Well:</b>	Calvary Farms 01	<b>Survey Calculation Method:</b>	Minimum Curvature
<b>Wellbore:</b>	Wellbore #1		
<b>Design:</b>	Design #1		

Planned Survey									
Measured Depth (usft)	Inclination (°)	Azimuth (°)	Vertical Depth (usft)	+N/-S (usft)	+E/-W (usft)	Vertical Section (usft)	Dogleg Rate (°/100usft)	Build Rate (°/100usft)	Turn Rate (°/100usft)
5,300.0	3.50	97.80	5,293.1	-30.8	224.6	225.0	0.00	0.00	0.00
5,400.0	3.50	97.80	5,392.9	-31.6	230.7	231.0	0.00	0.00	0.00
5,500.0	3.50	97.80	5,492.8	-32.4	236.7	237.1	0.00	0.00	0.00
5,600.0	3.50	97.80	5,592.6	-33.3	242.8	243.2	0.00	0.00	0.00
5,700.0	3.50	97.80	5,692.4	-34.1	248.8	249.2	0.00	0.00	0.00
5,800.0	3.50	97.80	5,792.2	-34.9	254.9	255.3	0.00	0.00	0.00
5,900.0	3.50	97.80	5,892.0	-35.8	260.9	261.3	0.00	0.00	0.00
6,000.0	3.50	97.80	5,991.8	-36.6	267.0	267.4	0.00	0.00	0.00
6,100.0	3.50	97.80	6,091.6	-37.4	273.0	273.5	0.00	0.00	0.00
6,200.0	3.50	97.80	6,191.4	-38.2	279.1	279.5	0.00	0.00	0.00
6,300.0	3.50	97.80	6,291.3	-39.1	285.1	285.6	0.00	0.00	0.00
6,400.0	3.50	97.80	6,391.1	-39.9	291.2	291.6	0.00	0.00	0.00
6,500.0	3.50	97.80	6,490.9	-40.7	297.2	297.7	0.00	0.00	0.00
6,569.3	3.50	97.80	6,560.1	-41.3	301.4	301.9	0.00	0.00	0.00
6,600.0	2.89	97.80	6,590.7	-41.5	303.1	303.6	2.00	-2.00	0.00
6,700.0	0.89	97.80	6,690.6	-42.0	306.4	306.9	2.00	-2.00	0.00
6,744.4	0.00	90.46	6,735.0	-42.0	306.7	307.2	2.00	-2.00	0.00
6,800.0	5.56	90.46	6,790.6	-42.0	309.4	309.9	10.00	10.00	0.00
6,900.0	15.56	90.46	6,888.7	-42.2	327.7	328.2	10.00	10.00	0.00
7,000.0	25.56	90.46	6,982.3	-42.5	362.8	363.3	10.00	10.00	0.00
7,100.0	35.56	90.46	7,068.3	-42.9	413.6	414.1	10.00	10.00	0.00
7,200.0	45.56	90.46	7,144.1	-43.4	478.5	479.0	10.00	10.00	0.00
7,300.0	55.56	90.46	7,207.6	-44.0	555.7	556.1	10.00	10.00	0.00
7,400.0	65.56	90.46	7,256.7	-44.7	642.6	643.1	10.00	10.00	0.00
7,500.0	75.56	90.46	7,289.9	-45.4	736.8	737.3	10.00	10.00	0.00
7,600.0	85.56	90.46	7,306.3	-46.2	835.3	835.8	10.00	10.00	0.00
7,647.4	90.30	90.46	7,308.0	-46.6	882.7	883.2	10.00	10.00	0.00
7,700.0	90.30	90.46	7,307.7	-47.0	935.3	935.8	0.00	0.00	0.00
7,800.0	90.30	90.46	7,307.2	-47.8	1,035.3	1,035.8	0.00	0.00	0.00
7,900.0	90.30	90.46	7,306.7	-48.6	1,135.3	1,135.8	0.00	0.00	0.00
8,000.0	90.30	90.46	7,306.1	-49.4	1,235.3	1,235.8	0.00	0.00	0.00
8,100.0	90.30	90.46	7,305.6	-50.2	1,335.3	1,335.8	0.00	0.00	0.00
8,200.0	90.30	90.46	7,305.1	-51.0	1,435.2	1,435.7	0.00	0.00	0.00
8,300.0	90.30	90.46	7,304.6	-51.8	1,535.2	1,535.7	0.00	0.00	0.00
8,400.0	90.30	90.46	7,304.1	-52.6	1,635.2	1,635.7	0.00	0.00	0.00
8,500.0	90.30	90.46	7,303.5	-53.4	1,735.2	1,735.7	0.00	0.00	0.00
8,600.0	90.30	90.46	7,303.0	-54.2	1,835.2	1,835.7	0.00	0.00	0.00
8,700.0	90.30	90.46	7,302.5	-55.0	1,935.2	1,935.7	0.00	0.00	0.00
8,800.0	90.30	90.46	7,302.0	-55.8	2,035.2	2,035.7	0.00	0.00	0.00
8,900.0	90.30	90.46	7,301.4	-56.6	2,135.2	2,135.7	0.00	0.00	0.00
9,000.0	90.30	90.46	7,300.9	-57.4	2,235.2	2,235.7	0.00	0.00	0.00
9,100.0	90.30	90.46	7,300.4	-58.2	2,335.2	2,335.7	0.00	0.00	0.00
9,200.0	90.30	90.46	7,299.9	-59.0	2,435.2	2,435.7	0.00	0.00	0.00
9,300.0	90.30	90.46	7,299.3	-59.7	2,535.2	2,535.7	0.00	0.00	0.00
9,400.0	90.30	90.46	7,298.8	-60.5	2,635.2	2,635.7	0.00	0.00	0.00
9,500.0	90.30	90.46	7,298.3	-61.3	2,735.2	2,735.7	0.00	0.00	0.00
9,600.0	90.30	90.46	7,297.8	-62.1	2,835.2	2,835.7	0.00	0.00	0.00
9,700.0	90.30	90.46	7,297.2	-62.9	2,935.2	2,935.7	0.00	0.00	0.00
9,800.0	90.30	90.46	7,296.7	-63.7	3,035.2	3,035.7	0.00	0.00	0.00
9,900.0	90.30	90.46	7,296.2	-64.5	3,135.2	3,135.7	0.00	0.00	0.00
10,000.0	90.30	90.46	7,295.7	-65.3	3,235.2	3,235.7	0.00	0.00	0.00
10,100.0	90.30	90.46	7,295.1	-66.1	3,335.2	3,335.7	0.00	0.00	0.00
10,200.0	90.30	90.46	7,294.6	-66.9	3,435.2	3,435.7	0.00	0.00	0.00
10,300.0	90.30	90.46	7,294.1	-67.7	3,535.2	3,535.7	0.00	0.00	0.00

# Bayswater Exploration & Production LLC

## Planning Report

<b>Database:</b>	edm	<b>Local Co-ordinate Reference:</b>	Well Calvary Farms 01
<b>Company:</b>	Bayswater Exploration & Production, LLC	<b>TVD Reference:</b>	WELL @ 4898.0usft (Original Well Elev)
<b>Project:</b>	DJ Basin	<b>MD Reference:</b>	WELL @ 4898.0usft (Original Well Elev)
<b>Site:</b>	Calvary Farms 19-D Pad	<b>North Reference:</b>	True
<b>Well:</b>	Calvary Farms 01	<b>Survey Calculation Method:</b>	Minimum Curvature
<b>Wellbore:</b>	Wellbore #1		
<b>Design:</b>	Design #1		

Planned Survey									
Measured Depth (usft)	Inclination (°)	Azimuth (°)	Vertical Depth (usft)	+N/-S (usft)	+E/-W (usft)	Vertical Section (usft)	Dogleg Rate (°/100usft)	Build Rate (°/100usft)	Turn Rate (°/100usft)
10,400.0	90.30	90.46	7,293.6	-68.5	3,635.1	3,635.7	0.00	0.00	0.00
10,500.0	90.30	90.46	7,293.0	-69.3	3,735.1	3,735.7	0.00	0.00	0.00
10,600.0	90.30	90.46	7,292.5	-70.1	3,835.1	3,835.7	0.00	0.00	0.00
10,700.0	90.30	90.46	7,292.0	-70.9	3,935.1	3,935.7	0.00	0.00	0.00
10,800.0	90.30	90.46	7,291.5	-71.7	4,035.1	4,035.7	0.00	0.00	0.00
10,900.0	90.30	90.46	7,290.9	-72.5	4,135.1	4,135.7	0.00	0.00	0.00
11,000.0	90.30	90.46	7,290.4	-73.3	4,235.1	4,235.7	0.00	0.00	0.00
11,100.0	90.30	90.46	7,289.9	-74.1	4,335.1	4,335.7	0.00	0.00	0.00
11,200.0	90.30	90.46	7,289.4	-74.9	4,435.1	4,435.7	0.00	0.00	0.00
11,300.0	90.30	90.46	7,288.8	-75.7	4,535.1	4,535.7	0.00	0.00	0.00
11,400.0	90.30	90.46	7,288.3	-76.4	4,635.1	4,635.7	0.00	0.00	0.00
11,500.0	90.30	90.46	7,287.8	-77.2	4,735.1	4,735.7	0.00	0.00	0.00
11,600.0	90.30	90.46	7,287.3	-78.0	4,835.1	4,835.7	0.00	0.00	0.00
11,700.0	90.30	90.46	7,286.7	-78.8	4,935.1	4,935.7	0.00	0.00	0.00
11,800.0	90.30	90.46	7,286.2	-79.6	5,035.1	5,035.7	0.00	0.00	0.00
11,900.0	90.30	90.46	7,285.7	-80.4	5,135.1	5,135.7	0.00	0.00	0.00
12,000.0	90.30	90.46	7,285.2	-81.2	5,235.1	5,235.7	0.00	0.00	0.00
12,100.0	90.30	90.46	7,284.6	-82.0	5,335.1	5,335.7	0.00	0.00	0.00
12,200.0	90.30	90.46	7,284.1	-82.8	5,435.1	5,435.7	0.00	0.00	0.00
12,300.0	90.30	90.46	7,283.6	-83.6	5,535.1	5,535.7	0.00	0.00	0.00
12,400.0	90.30	90.46	7,283.1	-84.4	5,635.1	5,635.7	0.00	0.00	0.00
12,500.0	90.30	90.46	7,282.5	-85.2	5,735.1	5,735.7	0.00	0.00	0.00
12,600.0	90.30	90.46	7,282.0	-86.0	5,835.0	5,835.7	0.00	0.00	0.00
12,700.0	90.30	90.46	7,281.5	-86.8	5,935.0	5,935.7	0.00	0.00	0.00
12,800.0	90.30	90.46	7,281.0	-87.6	6,035.0	6,035.7	0.00	0.00	0.00
12,900.0	90.30	90.46	7,280.4	-88.4	6,135.0	6,135.6	0.00	0.00	0.00
13,000.0	90.30	90.46	7,279.9	-89.2	6,235.0	6,235.6	0.00	0.00	0.00
13,100.0	90.30	90.46	7,279.4	-90.0	6,335.0	6,335.6	0.00	0.00	0.00
13,200.0	90.30	90.46	7,278.9	-90.8	6,435.0	6,435.6	0.00	0.00	0.00
13,300.0	90.30	90.46	7,278.3	-91.6	6,535.0	6,535.6	0.00	0.00	0.00
13,400.0	90.30	90.46	7,277.8	-92.4	6,635.0	6,635.6	0.00	0.00	0.00
13,500.0	90.30	90.46	7,277.3	-93.1	6,735.0	6,735.6	0.00	0.00	0.00
13,600.0	90.30	90.46	7,276.8	-93.9	6,835.0	6,835.6	0.00	0.00	0.00
13,700.0	90.30	90.46	7,276.2	-94.7	6,935.0	6,935.6	0.00	0.00	0.00
13,800.0	90.30	90.46	7,275.7	-95.5	7,035.0	7,035.6	0.00	0.00	0.00
13,900.0	90.30	90.46	7,275.2	-96.3	7,135.0	7,135.6	0.00	0.00	0.00
14,000.0	90.30	90.46	7,274.7	-97.1	7,235.0	7,235.6	0.00	0.00	0.00
14,100.0	90.30	90.46	7,274.1	-97.9	7,335.0	7,335.6	0.00	0.00	0.00
14,200.0	90.30	90.46	7,273.6	-98.7	7,435.0	7,435.6	0.00	0.00	0.00
14,300.0	90.30	90.46	7,273.1	-99.5	7,535.0	7,535.6	0.00	0.00	0.00
14,400.0	90.30	90.46	7,272.6	-100.3	7,635.0	7,635.6	0.00	0.00	0.00
14,500.0	90.30	90.46	7,272.0	-101.1	7,735.0	7,735.6	0.00	0.00	0.00
14,600.0	90.30	90.46	7,271.5	-101.9	7,835.0	7,835.6	0.00	0.00	0.00
14,700.0	90.30	90.46	7,271.0	-102.7	7,935.0	7,935.6	0.00	0.00	0.00
14,800.0	90.30	90.46	7,270.5	-103.5	8,034.9	8,035.6	0.00	0.00	0.00
14,900.0	90.30	90.46	7,269.9	-104.3	8,134.9	8,135.6	0.00	0.00	0.00
15,000.0	90.30	90.46	7,269.4	-105.1	8,234.9	8,235.6	0.00	0.00	0.00
15,100.0	90.30	90.46	7,268.9	-105.9	8,334.9	8,335.6	0.00	0.00	0.00
15,200.0	90.30	90.46	7,268.4	-106.7	8,434.9	8,435.6	0.00	0.00	0.00
15,300.0	90.30	90.46	7,267.8	-107.5	8,534.9	8,535.6	0.00	0.00	0.00
15,400.0	90.30	90.46	7,267.3	-108.3	8,634.9	8,635.6	0.00	0.00	0.00
15,500.0	90.30	90.46	7,266.8	-109.0	8,734.9	8,735.6	0.00	0.00	0.00
15,600.0	90.30	90.46	7,266.3	-109.8	8,834.9	8,835.6	0.00	0.00	0.00
15,700.0	90.30	90.46	7,265.8	-110.6	8,934.9	8,935.6	0.00	0.00	0.00

# Bayswater Exploration & Production LLC

## Planning Report

<b>Database:</b>	edm	<b>Local Co-ordinate Reference:</b>	Well Calvary Farms 01
<b>Company:</b>	Bayswater Exploration & Production, LLC	<b>TVD Reference:</b>	WELL @ 4898.0usft (Original Well Elev)
<b>Project:</b>	DJ Basin	<b>MD Reference:</b>	WELL @ 4898.0usft (Original Well Elev)
<b>Site:</b>	Calvary Farms 19-D Pad	<b>North Reference:</b>	True
<b>Well:</b>	Calvary Farms 01	<b>Survey Calculation Method:</b>	Minimum Curvature
<b>Wellbore:</b>	Wellbore #1		
<b>Design:</b>	Design #1		

Planned Survey										
Measured Depth (usft)	Inclination (°)	Azimuth (°)	Vertical Depth (usft)	+N/-S (usft)	+E/-W (usft)	Vertical Section (usft)	Dogleg Rate (°/100usft)	Build Rate (°/100usft)	Turn Rate (°/100usft)	
15,800.0	90.30	90.46	7,265.2	-111.4	9,034.9	9,035.6	0.00	0.00	0.00	
15,900.0	90.30	90.46	7,264.7	-112.2	9,134.9	9,135.6	0.00	0.00	0.00	
16,000.0	90.30	90.46	7,264.2	-113.0	9,234.9	9,235.6	0.00	0.00	0.00	
16,100.0	90.30	90.46	7,263.7	-113.8	9,334.9	9,335.6	0.00	0.00	0.00	
16,200.0	90.30	90.46	7,263.1	-114.6	9,434.9	9,435.6	0.00	0.00	0.00	
16,300.0	90.30	90.46	7,262.6	-115.4	9,534.9	9,535.6	0.00	0.00	0.00	
16,400.0	90.30	90.46	7,262.1	-116.2	9,634.9	9,635.6	0.00	0.00	0.00	
16,500.0	90.30	90.46	7,261.6	-117.0	9,734.9	9,735.6	0.00	0.00	0.00	
16,600.0	90.30	90.46	7,261.0	-117.8	9,834.9	9,835.6	0.00	0.00	0.00	
16,700.0	90.30	90.46	7,260.5	-118.6	9,934.9	9,935.6	0.00	0.00	0.00	
16,800.0	90.30	90.46	7,260.0	-119.4	10,034.9	10,035.6	0.00	0.00	0.00	
16,900.0	90.30	90.46	7,259.5	-120.2	10,134.9	10,135.6	0.00	0.00	0.00	
17,000.0	90.30	90.46	7,258.9	-121.0	10,234.8	10,235.6	0.00	0.00	0.00	
17,100.0	90.30	90.46	7,258.4	-121.8	10,334.8	10,335.6	0.00	0.00	0.00	
17,177.4	90.30	90.46	7,258.0	-122.4	10,412.2	10,412.9	0.00	0.00	0.00	

Design Targets										
Target Name	Dip Angle (°)	Dip Dir. (°)	TVD (usft)	+N/-S (usft)	+E/-W (usft)	Northing (usft)	Easting (usft)	Latitude	Longitude	
Calvary Farms 1 PBHL - hit/miss target - Shape - Point	0.00	0.00	7,258.0	-122.4	10,412.2	1,449,429.86	3,233,227.93	40° 33' 50.594 N	104° 39' 37.958 W	
Calvary Farms 1 LP - plan hits target center - Point	0.00	0.00	7,308.0	-46.6	882.7	1,449,419.46	3,223,698.12	40° 33' 51.365 N	104° 41' 41.435 W	