



Pad Name: Calvary Farms 19-D Pad  
Well Name: Calvary Farms 02  
Ground Level: 4878.0  
SHL Latitude: 40° 33' 51.678 N  
SHL Longitude: 104° 41' 52.879 W

## SECTION DETAILS

Sec	MD	Inc	Azi	TVD	+N/-S	+E/-W	Dleg	TFace	VSec	Target
1	0.0	0.00	0.00	0.0	0.0	0.0	0.00	0.00	0.0	
2	1500.0	0.00	0.00	1500.0	0.0	0.0	0.00	0.00	0.0	
3	1765.8	5.32	136.92	1765.4	-9.0	8.4	2.00	136.92	8.8	
4	6329.6	5.32	136.92	6309.6	-317.9	297.2	0.00	0.00	309.4	
5	6595.4	0.00	90.46	6575.1	-326.9	305.6	2.00	180.00	318.2	
6	7498.5	90.30	90.46	7148.0	-331.5	881.6	10.00	0.00	893.9	Calvary Farms 2 LP
7	17029.9	90.30	90.46	7098.0	-407.6	10412.6	0.00	0.00	10420.6	Calvary Farms 2 PBHL

## DESIGN TARGET DETAILS

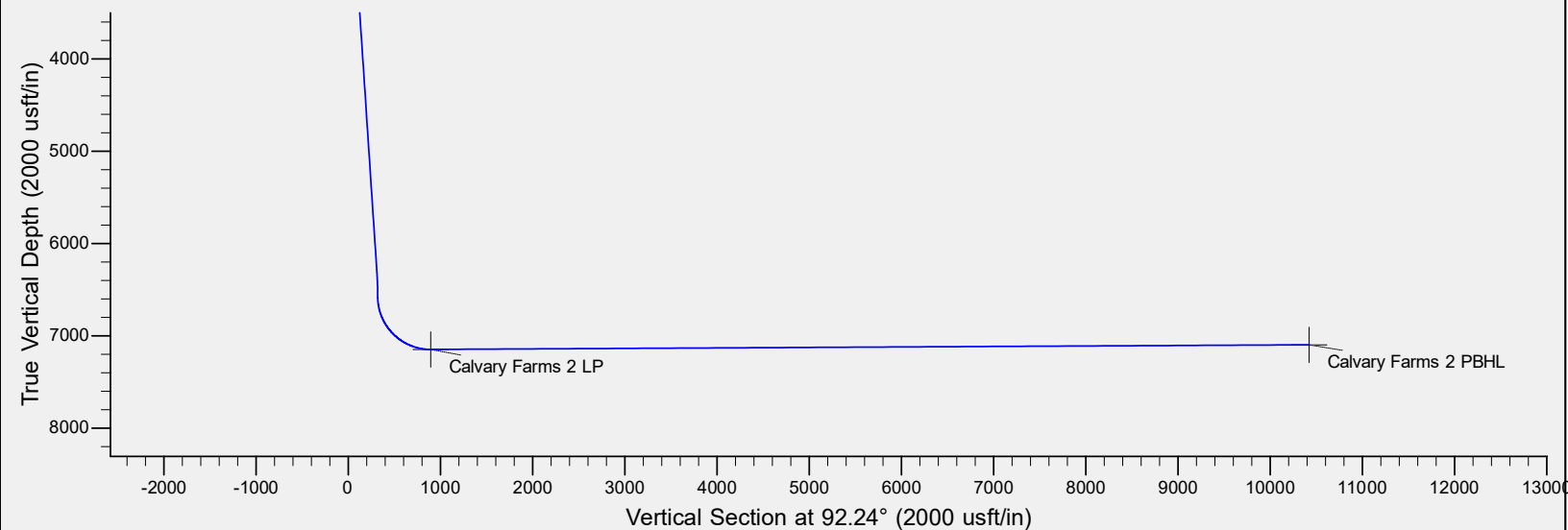
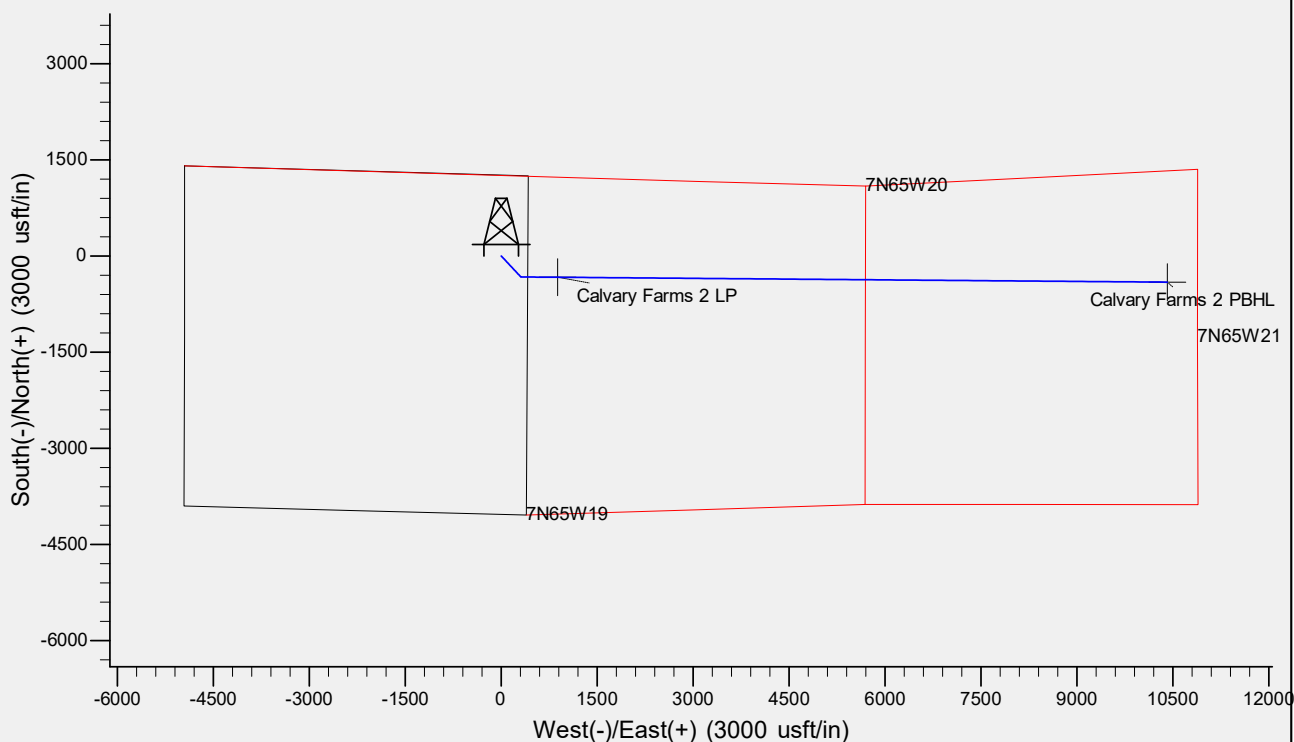
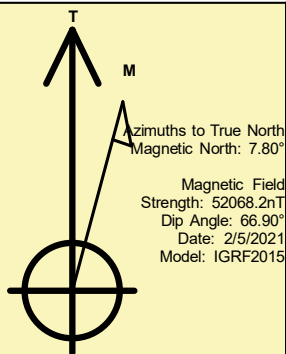
Name	TVD	+N/-S	+E/-W	Northing	Easting	Latitude	Longitude	Shape
Calvary Farms 2 LP	7148.0	-331.5	881.6	1449119.62	3223699.17	40° 33' 48.402 N	104° 41' 41.456 W	Point
Calvary Farms 2 PBHL	- plan hits target center 7098.0	-407.6	10412.6	1449129.68	3233230.49	40° 33' 47.628 N	104° 39' 37.962 W	Point

## REFERENCE INFORMATION

Co-ordinate (N/E) Reference: Well Calvary Farms 02, True North  
Vertical (TVD) Reference: WELL @ 4898.0usft (Original Well Elev)  
Section (VS) Reference: Slot - (0.0N, 0.0E)  
Measured Depth Reference: WELL @ 4898.0usft (Original Well Elev)  
Calculation Method: Minimum Curvature

## CASING DETAILS

No casing data is available



# **Bayswater Exploration & Production, LLC**

**DJ Basin**

**Calvary Farms 19-D Pad**

**Calvary Farms 02**

**Wellbore #1**

**Plan: Design #1**

## **Standard Planning Report**

**07 February, 2021**

# Bayswater Exploration & Production LLC

## Planning Report

<b>Database:</b>	edm	<b>Local Co-ordinate Reference:</b>	Well Calvary Farms 02
<b>Company:</b>	Bayswater Exploration & Production, LLC	<b>TVD Reference:</b>	WELL @ 4898.0usft (Original Well Elev)
<b>Project:</b>	DJ Basin	<b>MD Reference:</b>	WELL @ 4898.0usft (Original Well Elev)
<b>Site:</b>	Calvary Farms 19-D Pad	<b>North Reference:</b>	True
<b>Well:</b>	Calvary Farms 02	<b>Survey Calculation Method:</b>	Minimum Curvature
<b>Wellbore:</b>	Wellbore #1		
<b>Design:</b>	Design #1		

<b>Project</b>	DJ Basin, DJ Basin		
<b>Map System:</b>	US State Plane 1983	<b>System Datum:</b>	Mean Sea Level
<b>Geo Datum:</b>	North American Datum 1983		
<b>Map Zone:</b>	Colorado Northern Zone		

Site		Calvary Farms 19-D Pad			
Site Position:		Northing:	1,449,458.09 usft	Latitude:	40° 33' 51.826 N
From:	Lat/Long	Easting:	3,222,815.05 usft	Longitude:	104° 41' 52.872 W
Position Uncertainty:	0.0 usft	Slot Radius:	13-3/16 "	Grid Convergence:	0.52 °

Well	Calvary Farms 02					
Well Position	+N/-S	-14.9 usft	Northing:	1,449,443.13 usft	Latitude:	40° 33' 51.678 N
	+E/-W	-0.6 usft	Easting:	3,222,814.63 usft	Longitude:	104° 41' 52.879 W
Position Uncertainty		0.0 usft	Wellhead Elevation:		Ground Level:	4,878.0 usft

<b>Wellbore</b>	Wellbore #1				
<b>Magnetics</b>	<b>Model Name</b>	<b>Sample Date</b>	<b>Declination (°)</b>	<b>Dip Angle (°)</b>	<b>Field Strength (nT)</b>
	IGRF2015	2/5/2021	7.80	66.90	52,068.22627067

<b>Design</b>	Design #1			
<b>Audit Notes:</b>				
<b>Version:</b>	<b>Phase:</b>	PLAN	<b>Tie On Depth:</b>	0.0
<b>Vertical Section:</b>	<b>Depth From (TVD) (usft)</b>	<b>+N/-S (usft)</b>	<b>+E/-W (usft)</b>	<b>Direction (°)</b>
	0.0	0.0	0.0	92.24

<b>Plan Survey Tool Program</b>	<b>Date</b>	2/5/2021		
<b>Depth From (usft)</b>	<b>Depth To (usft)</b>	<b>Survey (Wellbore)</b>	<b>Tool Name</b>	<b>Remarks</b>
1	0.0	17,029.9	Design #1 (Wellbore #1)	MWD
				OWSG MWD - Standard

<b>Plan Sections</b>										
<b>Measured Depth (usft)</b>	<b>Inclination (°)</b>	<b>Azimuth (°)</b>	<b>Vertical Depth (usft)</b>	<b>+N/-S (usft)</b>	<b>+E/-W (usft)</b>	<b>Dogleg Rate (°/100usft)</b>	<b>Build Rate (°/100usft)</b>	<b>Turn Rate (°/100usft)</b>	<b>TFO (°)</b>	<b>Target</b>
0.0	0.00	0.00	0.0	0.0	0.0	0.00	0.00	0.00	0.00	
1,500.0	0.00	0.00	1,500.0	0.0	0.0	0.00	0.00	0.00	0.00	
1,765.8	5.32	136.92	1,765.4	-9.0	8.4	2.00	2.00	0.00	136.92	
6,329.6	5.32	136.92	6,309.6	-317.9	297.2	0.00	0.00	0.00	0.00	
6,595.4	0.00	90.46	6,575.0	-326.9	305.6	2.00	-2.00	0.00	180.00	
7,498.5	90.30	90.46	7,148.0	-331.5	881.6	10.00	10.00	0.00	0.00	Calvary Farms 2 LP
17,029.9	90.30	90.46	7,098.0	-407.6	10,412.6	0.00	0.00	0.00	0.00	Calvary Farms 2 PBH

# Bayswater Exploration & Production LLC

## Planning Report

<b>Database:</b>	edm	<b>Local Co-ordinate Reference:</b>	Well Calvary Farms 02
<b>Company:</b>	Bayswater Exploration & Production, LLC	<b>TVD Reference:</b>	WELL @ 4898.0usft (Original Well Elev)
<b>Project:</b>	DJ Basin	<b>MD Reference:</b>	WELL @ 4898.0usft (Original Well Elev)
<b>Site:</b>	Calvary Farms 19-D Pad	<b>North Reference:</b>	True
<b>Well:</b>	Calvary Farms 02	<b>Survey Calculation Method:</b>	Minimum Curvature
<b>Wellbore:</b>	Wellbore #1		
<b>Design:</b>	Design #1		

Planned Survey									
Measured Depth (usft)	Inclination (°)	Azimuth (°)	Vertical Depth (usft)	+N/-S (usft)	+E/-W (usft)	Vertical Section (usft)	Dogleg Rate (°/100usft)	Build Rate (°/100usft)	Turn Rate (°/100usft)
0.0	0.00	0.00	0.0	0.0	0.0	0.0	0.00	0.00	0.00
100.0	0.00	0.00	100.0	0.0	0.0	0.0	0.00	0.00	0.00
200.0	0.00	0.00	200.0	0.0	0.0	0.0	0.00	0.00	0.00
300.0	0.00	0.00	300.0	0.0	0.0	0.0	0.00	0.00	0.00
400.0	0.00	0.00	400.0	0.0	0.0	0.0	0.00	0.00	0.00
500.0	0.00	0.00	500.0	0.0	0.0	0.0	0.00	0.00	0.00
600.0	0.00	0.00	600.0	0.0	0.0	0.0	0.00	0.00	0.00
700.0	0.00	0.00	700.0	0.0	0.0	0.0	0.00	0.00	0.00
800.0	0.00	0.00	800.0	0.0	0.0	0.0	0.00	0.00	0.00
900.0	0.00	0.00	900.0	0.0	0.0	0.0	0.00	0.00	0.00
1,000.0	0.00	0.00	1,000.0	0.0	0.0	0.0	0.00	0.00	0.00
1,100.0	0.00	0.00	1,100.0	0.0	0.0	0.0	0.00	0.00	0.00
1,200.0	0.00	0.00	1,200.0	0.0	0.0	0.0	0.00	0.00	0.00
1,300.0	0.00	0.00	1,300.0	0.0	0.0	0.0	0.00	0.00	0.00
1,400.0	0.00	0.00	1,400.0	0.0	0.0	0.0	0.00	0.00	0.00
1,500.0	0.00	0.00	1,500.0	0.0	0.0	0.0	0.00	0.00	0.00
1,600.0	2.00	136.92	1,600.0	-1.3	1.2	1.2	2.00	2.00	0.00
1,700.0	4.00	136.92	1,699.8	-5.1	4.8	5.0	2.00	2.00	0.00
1,765.8	5.32	136.92	1,765.4	-9.0	8.4	8.8	2.00	2.00	0.00
1,800.0	5.32	136.92	1,799.5	-11.3	10.6	11.0	0.00	0.00	0.00
1,900.0	5.32	136.92	1,899.0	-18.1	16.9	17.6	0.00	0.00	0.00
2,000.0	5.32	136.92	1,998.6	-24.9	23.2	24.2	0.00	0.00	0.00
2,100.0	5.32	136.92	2,098.2	-31.6	29.6	30.8	0.00	0.00	0.00
2,200.0	5.32	136.92	2,197.8	-38.4	35.9	37.4	0.00	0.00	0.00
2,300.0	5.32	136.92	2,297.3	-45.2	42.2	44.0	0.00	0.00	0.00
2,400.0	5.32	136.92	2,396.9	-51.9	48.5	50.5	0.00	0.00	0.00
2,500.0	5.32	136.92	2,496.5	-58.7	54.9	57.1	0.00	0.00	0.00
2,600.0	5.32	136.92	2,596.0	-65.5	61.2	63.7	0.00	0.00	0.00
2,700.0	5.32	136.92	2,695.6	-72.2	67.5	70.3	0.00	0.00	0.00
2,800.0	5.32	136.92	2,795.2	-79.0	73.9	76.9	0.00	0.00	0.00
2,900.0	5.32	136.92	2,894.7	-85.8	80.2	83.5	0.00	0.00	0.00
3,000.0	5.32	136.92	2,994.3	-92.5	86.5	90.1	0.00	0.00	0.00
3,100.0	5.32	136.92	3,093.9	-99.3	92.8	96.7	0.00	0.00	0.00
3,200.0	5.32	136.92	3,193.4	-106.1	99.2	103.2	0.00	0.00	0.00
3,300.0	5.32	136.92	3,293.0	-112.8	105.5	109.8	0.00	0.00	0.00
3,400.0	5.32	136.92	3,392.6	-119.6	111.8	116.4	0.00	0.00	0.00
3,500.0	5.32	136.92	3,492.2	-126.4	118.2	123.0	0.00	0.00	0.00
3,600.0	5.32	136.92	3,591.7	-133.1	124.5	129.6	0.00	0.00	0.00
3,700.0	5.32	136.92	3,691.3	-139.9	130.8	136.2	0.00	0.00	0.00
3,800.0	5.32	136.92	3,790.9	-146.7	137.1	142.8	0.00	0.00	0.00
3,900.0	5.32	136.92	3,890.4	-153.4	143.5	149.4	0.00	0.00	0.00
4,000.0	5.32	136.92	3,990.0	-160.2	149.8	156.0	0.00	0.00	0.00
4,100.0	5.32	136.92	4,089.6	-167.0	156.1	162.5	0.00	0.00	0.00
4,200.0	5.32	136.92	4,189.1	-173.8	162.5	169.1	0.00	0.00	0.00
4,300.0	5.32	136.92	4,288.7	-180.5	168.8	175.7	0.00	0.00	0.00
4,400.0	5.32	136.92	4,388.3	-187.3	175.1	182.3	0.00	0.00	0.00
4,500.0	5.32	136.92	4,487.9	-194.1	181.4	188.9	0.00	0.00	0.00
4,600.0	5.32	136.92	4,587.4	-200.8	187.8	195.5	0.00	0.00	0.00
4,700.0	5.32	136.92	4,687.0	-207.6	194.1	202.1	0.00	0.00	0.00
4,800.0	5.32	136.92	4,786.6	-214.4	200.4	208.7	0.00	0.00	0.00
4,900.0	5.32	136.92	4,886.1	-221.1	206.8	215.2	0.00	0.00	0.00
5,000.0	5.32	136.92	4,985.7	-227.9	213.1	221.8	0.00	0.00	0.00
5,100.0	5.32	136.92	5,085.3	-234.7	219.4	228.4	0.00	0.00	0.00
5,200.0	5.32	136.92	5,184.8	-241.4	225.7	235.0	0.00	0.00	0.00

# Bayswater Exploration & Production LLC

## Planning Report

<b>Database:</b>	edm	<b>Local Co-ordinate Reference:</b>	Well Calvary Farms 02
<b>Company:</b>	Bayswater Exploration & Production, LLC	<b>TVD Reference:</b>	WELL @ 4898.0usft (Original Well Elev)
<b>Project:</b>	DJ Basin	<b>MD Reference:</b>	WELL @ 4898.0usft (Original Well Elev)
<b>Site:</b>	Calvary Farms 19-D Pad	<b>North Reference:</b>	True
<b>Well:</b>	Calvary Farms 02	<b>Survey Calculation Method:</b>	Minimum Curvature
<b>Wellbore:</b>	Wellbore #1		
<b>Design:</b>	Design #1		

Planned Survey									
Measured Depth (usft)	Inclination (°)	Azimuth (°)	Vertical Depth (usft)	+N/-S (usft)	+E/-W (usft)	Vertical Section (usft)	Dogleg Rate (°/100usft)	Build Rate (°/100usft)	Turn Rate (°/100usft)
5,300.0	5.32	136.92	5,284.4	-248.2	232.1	241.6	0.00	0.00	0.00
5,400.0	5.32	136.92	5,384.0	-255.0	238.4	248.2	0.00	0.00	0.00
5,500.0	5.32	136.92	5,483.6	-261.7	244.7	254.8	0.00	0.00	0.00
5,600.0	5.32	136.92	5,583.1	-268.5	251.0	261.4	0.00	0.00	0.00
5,700.0	5.32	136.92	5,682.7	-275.3	257.4	267.9	0.00	0.00	0.00
5,800.0	5.32	136.92	5,782.3	-282.0	263.7	274.5	0.00	0.00	0.00
5,900.0	5.32	136.92	5,881.8	-288.8	270.0	281.1	0.00	0.00	0.00
6,000.0	5.32	136.92	5,981.4	-295.6	276.4	287.7	0.00	0.00	0.00
6,100.0	5.32	136.92	6,081.0	-302.4	282.7	294.3	0.00	0.00	0.00
6,200.0	5.32	136.92	6,180.5	-309.1	289.0	300.9	0.00	0.00	0.00
6,300.0	5.32	136.92	6,280.1	-315.9	295.3	307.5	0.00	0.00	0.00
6,329.6	5.32	136.92	6,309.6	-317.9	297.2	309.4	0.00	0.00	0.00
6,400.0	3.91	136.92	6,379.8	-322.0	301.1	313.5	2.00	-2.00	0.00
6,500.0	1.91	136.92	6,479.6	-325.7	304.6	317.1	2.00	-2.00	0.00
6,595.4	0.00	90.46	6,575.0	-326.9	305.6	318.2	2.00	-2.00	0.00
6,600.0	0.46	90.46	6,579.6	-326.9	305.7	318.2	10.00	10.00	0.00
6,700.0	10.46	90.46	6,679.0	-327.0	315.2	327.7	10.00	10.00	0.00
6,800.0	20.46	90.46	6,775.3	-327.2	341.8	354.3	10.00	10.00	0.00
6,900.0	30.46	90.46	6,865.5	-327.5	384.7	397.2	10.00	10.00	0.00
7,000.0	40.46	90.46	6,946.8	-328.0	442.6	455.1	10.00	10.00	0.00
7,100.0	50.46	90.46	7,016.9	-328.6	513.8	526.3	10.00	10.00	0.00
7,200.0	60.46	90.46	7,073.5	-329.2	596.1	608.5	10.00	10.00	0.00
7,300.0	70.46	90.46	7,115.0	-329.9	686.9	699.3	10.00	10.00	0.00
7,400.0	80.46	90.46	7,140.1	-330.7	783.6	795.9	10.00	10.00	0.00
7,498.5	90.30	90.46	7,148.0	-331.5	881.6	893.9	10.00	10.00	0.00
7,500.0	90.30	90.46	7,148.0	-331.5	883.1	895.4	0.00	0.00	0.00
7,600.0	90.30	90.46	7,147.5	-332.3	983.1	995.4	0.00	0.00	0.00
7,700.0	90.30	90.46	7,146.9	-333.1	1,083.1	1,095.3	0.00	0.00	0.00
7,800.0	90.30	90.46	7,146.4	-333.9	1,183.1	1,195.3	0.00	0.00	0.00
7,900.0	90.30	90.46	7,145.9	-334.7	1,283.1	1,295.2	0.00	0.00	0.00
8,000.0	90.30	90.46	7,145.4	-335.5	1,383.1	1,395.2	0.00	0.00	0.00
8,100.0	90.30	90.46	7,144.8	-336.3	1,483.1	1,495.1	0.00	0.00	0.00
8,200.0	90.30	90.46	7,144.3	-337.1	1,583.1	1,595.1	0.00	0.00	0.00
8,300.0	90.30	90.46	7,143.8	-337.9	1,683.1	1,695.0	0.00	0.00	0.00
8,400.0	90.30	90.46	7,143.3	-338.7	1,783.1	1,795.0	0.00	0.00	0.00
8,500.0	90.30	90.46	7,142.7	-339.5	1,883.1	1,894.9	0.00	0.00	0.00
8,600.0	90.30	90.46	7,142.2	-340.3	1,983.1	1,994.9	0.00	0.00	0.00
8,700.0	90.30	90.46	7,141.7	-341.1	2,083.1	2,094.8	0.00	0.00	0.00
8,800.0	90.30	90.46	7,141.2	-341.9	2,183.1	2,194.8	0.00	0.00	0.00
8,900.0	90.30	90.46	7,140.6	-342.7	2,283.1	2,294.7	0.00	0.00	0.00
9,000.0	90.30	90.46	7,140.1	-343.5	2,383.1	2,394.7	0.00	0.00	0.00
9,100.0	90.30	90.46	7,139.6	-344.3	2,483.1	2,494.6	0.00	0.00	0.00
9,200.0	90.30	90.46	7,139.1	-345.1	2,583.1	2,594.6	0.00	0.00	0.00
9,300.0	90.30	90.46	7,138.5	-345.9	2,683.0	2,694.5	0.00	0.00	0.00
9,400.0	90.30	90.46	7,138.0	-346.7	2,783.0	2,794.5	0.00	0.00	0.00
9,500.0	90.30	90.46	7,137.5	-347.5	2,883.0	2,894.4	0.00	0.00	0.00
9,600.0	90.30	90.46	7,137.0	-348.3	2,983.0	2,994.4	0.00	0.00	0.00
9,700.0	90.30	90.46	7,136.5	-349.1	3,083.0	3,094.3	0.00	0.00	0.00
9,800.0	90.30	90.46	7,135.9	-349.9	3,183.0	3,194.3	0.00	0.00	0.00
9,900.0	90.30	90.46	7,135.4	-350.7	3,283.0	3,294.2	0.00	0.00	0.00
10,000.0	90.30	90.46	7,134.9	-351.5	3,383.0	3,394.2	0.00	0.00	0.00
10,100.0	90.30	90.46	7,134.4	-352.3	3,483.0	3,494.1	0.00	0.00	0.00
10,200.0	90.30	90.46	7,133.8	-353.1	3,583.0	3,594.1	0.00	0.00	0.00
10,300.0	90.30	90.46	7,133.3	-353.9	3,683.0	3,694.0	0.00	0.00	0.00

# Bayswater Exploration & Production LLC

## Planning Report

<b>Database:</b>	edm	<b>Local Co-ordinate Reference:</b>	Well Calvary Farms 02
<b>Company:</b>	Bayswater Exploration & Production, LLC	<b>TVD Reference:</b>	WELL @ 4898.0usft (Original Well Elev)
<b>Project:</b>	DJ Basin	<b>MD Reference:</b>	WELL @ 4898.0usft (Original Well Elev)
<b>Site:</b>	Calvary Farms 19-D Pad	<b>North Reference:</b>	True
<b>Well:</b>	Calvary Farms 02	<b>Survey Calculation Method:</b>	Minimum Curvature
<b>Wellbore:</b>	Wellbore #1		
<b>Design:</b>	Design #1		

Planned Survey										
Measured Depth (usft)	Inclination (°)	Azimuth (°)	Vertical Depth (usft)	+N/-S (usft)	+E/-W (usft)	Vertical Section (usft)	Dogleg Rate (°/100usft)	Build Rate (°/100usft)	Turn Rate (°/100usft)	
10,400.0	90.30	90.46	7,132.8	-354.7	3,783.0	3,794.0	0.00	0.00	0.00	
10,500.0	90.30	90.46	7,132.3	-355.5	3,883.0	3,893.9	0.00	0.00	0.00	
10,600.0	90.30	90.46	7,131.7	-356.3	3,983.0	3,993.9	0.00	0.00	0.00	
10,700.0	90.30	90.46	7,131.2	-357.1	4,083.0	4,093.8	0.00	0.00	0.00	
10,800.0	90.30	90.46	7,130.7	-357.9	4,183.0	4,193.8	0.00	0.00	0.00	
10,900.0	90.30	90.46	7,130.2	-358.7	4,283.0	4,293.7	0.00	0.00	0.00	
11,000.0	90.30	90.46	7,129.6	-359.5	4,383.0	4,393.7	0.00	0.00	0.00	
11,100.0	90.30	90.46	7,129.1	-360.3	4,483.0	4,493.6	0.00	0.00	0.00	
11,200.0	90.30	90.46	7,128.6	-361.1	4,583.0	4,593.6	0.00	0.00	0.00	
11,300.0	90.30	90.46	7,128.1	-361.9	4,683.0	4,693.5	0.00	0.00	0.00	
11,400.0	90.30	90.46	7,127.5	-362.7	4,783.0	4,793.5	0.00	0.00	0.00	
11,500.0	90.30	90.46	7,127.0	-363.5	4,882.9	4,893.4	0.00	0.00	0.00	
11,600.0	90.30	90.46	7,126.5	-364.3	4,982.9	4,993.4	0.00	0.00	0.00	
11,700.0	90.30	90.46	7,126.0	-365.1	5,082.9	5,093.3	0.00	0.00	0.00	
11,800.0	90.30	90.46	7,125.4	-365.9	5,182.9	5,193.3	0.00	0.00	0.00	
11,900.0	90.30	90.46	7,124.9	-366.7	5,282.9	5,293.2	0.00	0.00	0.00	
12,000.0	90.30	90.46	7,124.4	-367.5	5,382.9	5,393.2	0.00	0.00	0.00	
12,100.0	90.30	90.46	7,123.9	-368.3	5,482.9	5,493.1	0.00	0.00	0.00	
12,200.0	90.30	90.46	7,123.3	-369.1	5,582.9	5,593.1	0.00	0.00	0.00	
12,300.0	90.30	90.46	7,122.8	-369.9	5,682.9	5,693.0	0.00	0.00	0.00	
12,400.0	90.30	90.46	7,122.3	-370.7	5,782.9	5,793.0	0.00	0.00	0.00	
12,500.0	90.30	90.46	7,121.8	-371.5	5,882.9	5,892.9	0.00	0.00	0.00	
12,600.0	90.30	90.46	7,121.2	-372.2	5,982.9	5,992.9	0.00	0.00	0.00	
12,700.0	90.30	90.46	7,120.7	-373.0	6,082.9	6,092.8	0.00	0.00	0.00	
12,800.0	90.30	90.46	7,120.2	-373.8	6,182.9	6,192.8	0.00	0.00	0.00	
12,900.0	90.30	90.46	7,119.7	-374.6	6,282.9	6,292.7	0.00	0.00	0.00	
13,000.0	90.30	90.46	7,119.1	-375.4	6,382.9	6,392.7	0.00	0.00	0.00	
13,100.0	90.30	90.46	7,118.6	-376.2	6,482.9	6,492.6	0.00	0.00	0.00	
13,200.0	90.30	90.46	7,118.1	-377.0	6,582.9	6,592.6	0.00	0.00	0.00	
13,300.0	90.30	90.46	7,117.6	-377.8	6,682.9	6,692.5	0.00	0.00	0.00	
13,400.0	90.30	90.46	7,117.0	-378.6	6,782.9	6,792.5	0.00	0.00	0.00	
13,500.0	90.30	90.46	7,116.5	-379.4	6,882.9	6,892.4	0.00	0.00	0.00	
13,600.0	90.30	90.46	7,116.0	-380.2	6,982.9	6,992.4	0.00	0.00	0.00	
13,700.0	90.30	90.46	7,115.5	-381.0	7,082.8	7,092.3	0.00	0.00	0.00	
13,800.0	90.30	90.46	7,114.9	-381.8	7,182.8	7,192.3	0.00	0.00	0.00	
13,900.0	90.30	90.46	7,114.4	-382.6	7,282.8	7,292.2	0.00	0.00	0.00	
14,000.0	90.30	90.46	7,113.9	-383.4	7,382.8	7,392.2	0.00	0.00	0.00	
14,100.0	90.30	90.46	7,113.4	-384.2	7,482.8	7,492.1	0.00	0.00	0.00	
14,200.0	90.30	90.46	7,112.8	-385.0	7,582.8	7,592.1	0.00	0.00	0.00	
14,300.0	90.30	90.46	7,112.3	-385.8	7,682.8	7,692.0	0.00	0.00	0.00	
14,400.0	90.30	90.46	7,111.8	-386.6	7,782.8	7,792.0	0.00	0.00	0.00	
14,500.0	90.30	90.46	7,111.3	-387.4	7,882.8	7,891.9	0.00	0.00	0.00	
14,600.0	90.30	90.46	7,110.7	-388.2	7,982.8	7,991.9	0.00	0.00	0.00	
14,700.0	90.30	90.46	7,110.2	-389.0	8,082.8	8,091.8	0.00	0.00	0.00	
14,800.0	90.30	90.46	7,109.7	-389.8	8,182.8	8,191.8	0.00	0.00	0.00	
14,900.0	90.30	90.46	7,109.2	-390.6	8,282.8	8,291.7	0.00	0.00	0.00	
15,000.0	90.30	90.46	7,108.6	-391.4	8,382.8	8,391.7	0.00	0.00	0.00	
15,100.0	90.30	90.46	7,108.1	-392.2	8,482.8	8,491.6	0.00	0.00	0.00	
15,200.0	90.30	90.46	7,107.6	-393.0	8,582.8	8,591.6	0.00	0.00	0.00	
15,300.0	90.30	90.46	7,107.1	-393.8	8,682.8	8,691.5	0.00	0.00	0.00	
15,400.0	90.30	90.46	7,106.6	-394.6	8,782.8	8,791.5	0.00	0.00	0.00	
15,500.0	90.30	90.46	7,106.0	-395.4	8,882.8	8,891.4	0.00	0.00	0.00	
15,600.0	90.30	90.46	7,105.5	-396.2	8,982.8	8,991.4	0.00	0.00	0.00	
15,700.0	90.30	90.46	7,105.0	-397.0	9,082.8	9,091.3	0.00	0.00	0.00	

# Bayswater Exploration & Production LLC

## Planning Report

<b>Database:</b>	edm	<b>Local Co-ordinate Reference:</b>	Well Calvary Farms 02
<b>Company:</b>	Bayswater Exploration & Production, LLC	<b>TVD Reference:</b>	WELL @ 4898.0usft (Original Well Elev)
<b>Project:</b>	DJ Basin	<b>MD Reference:</b>	WELL @ 4898.0usft (Original Well Elev)
<b>Site:</b>	Calvary Farms 19-D Pad	<b>North Reference:</b>	True
<b>Well:</b>	Calvary Farms 02	<b>Survey Calculation Method:</b>	Minimum Curvature
<b>Wellbore:</b>	Wellbore #1		
<b>Design:</b>	Design #1		

Planned Survey										
Measured Depth (usft)	Inclination (°)	Azimuth (°)	Vertical Depth (usft)	+N/-S (usft)	+E/-W (usft)	Vertical Section (usft)	Dogleg Rate (°/100usft)	Build Rate (°/100usft)	Turn Rate (°/100usft)	
15,800.0	90.30	90.46	7,104.5	-397.8	9,182.8	9,191.3	0.00	0.00	0.00	
15,900.0	90.30	90.46	7,103.9	-398.6	9,282.7	9,291.2	0.00	0.00	0.00	
16,000.0	90.30	90.46	7,103.4	-399.4	9,382.7	9,391.2	0.00	0.00	0.00	
16,100.0	90.30	90.46	7,102.9	-400.2	9,482.7	9,491.1	0.00	0.00	0.00	
16,200.0	90.30	90.46	7,102.4	-401.0	9,582.7	9,591.1	0.00	0.00	0.00	
16,300.0	90.30	90.46	7,101.8	-401.8	9,682.7	9,691.0	0.00	0.00	0.00	
16,400.0	90.30	90.46	7,101.3	-402.6	9,782.7	9,791.0	0.00	0.00	0.00	
16,500.0	90.30	90.46	7,100.8	-403.4	9,882.7	9,890.9	0.00	0.00	0.00	
16,600.0	90.30	90.46	7,100.3	-404.2	9,982.7	9,990.9	0.00	0.00	0.00	
16,700.0	90.30	90.46	7,099.7	-405.0	10,082.7	10,090.8	0.00	0.00	0.00	
16,800.0	90.30	90.46	7,099.2	-405.8	10,182.7	10,190.8	0.00	0.00	0.00	
16,900.0	90.30	90.46	7,098.7	-406.6	10,282.7	10,290.7	0.00	0.00	0.00	
17,000.0	90.30	90.46	7,098.2	-407.4	10,382.7	10,390.7	0.00	0.00	0.00	
17,029.9	90.30	90.46	7,098.0	-407.6	10,412.6	10,420.6	0.00	0.00	0.00	

Design Targets									
Target Name	Dip Angle (°)	Dip Dir. (°)	TVD (usft)	+N/-S (usft)	+E/-W (usft)	Northing (usft)	Easting (usft)	Latitude	
- hit/miss target									
- Shape									
Calvary Farms 2 PBHL	0.00	0.00	7,098.0	-407.6	10,412.6	1,449,129.68	3,233,230.49	40° 33' 47.628 N	
- plan hits target center									
- Point									
Calvary Farms 2 LP	0.00	0.00	7,148.0	-331.5	881.6	1,449,119.62	3,223,699.18	40° 33' 48.402 N	
- plan hits target center									
- Point									