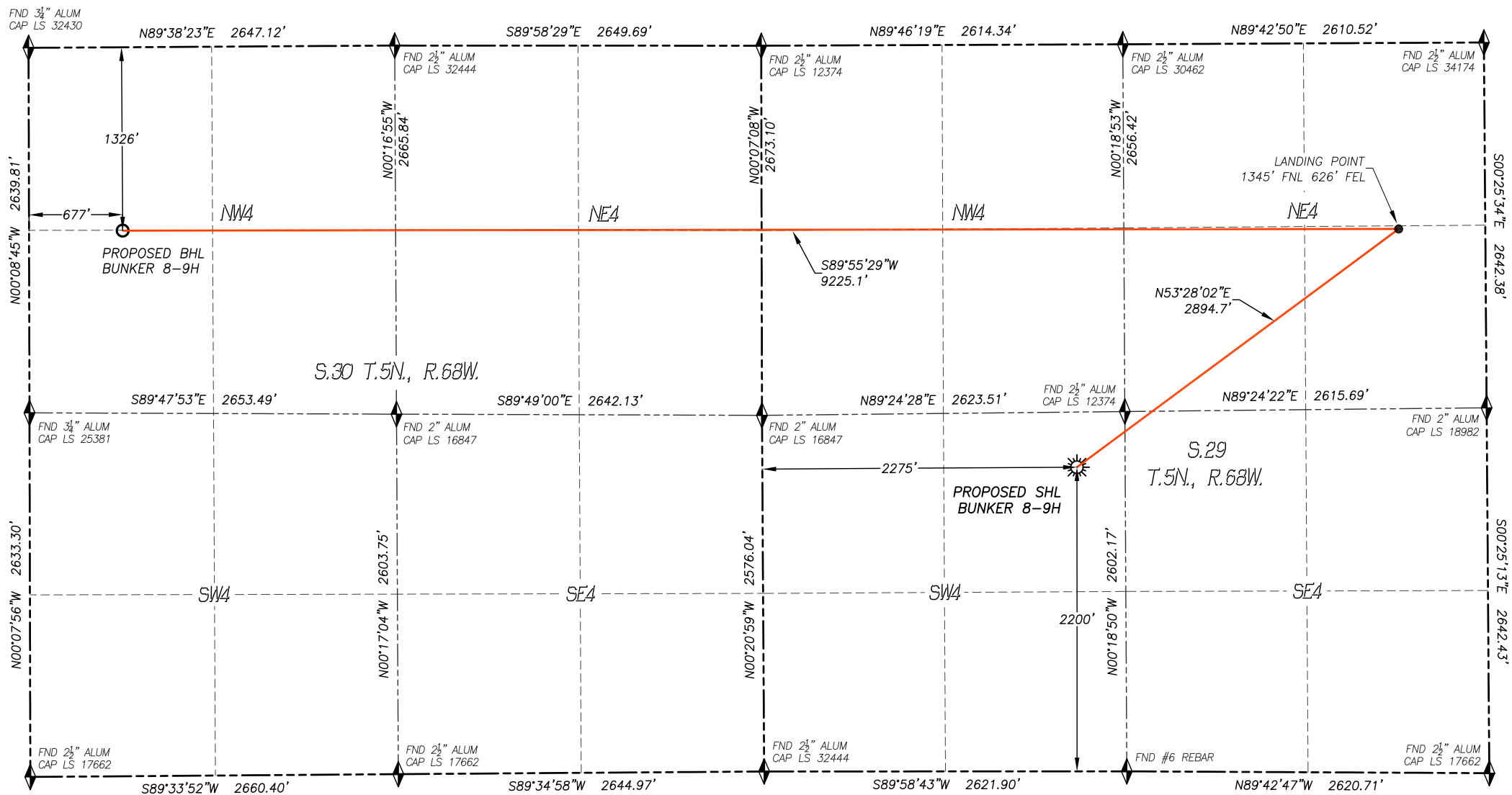
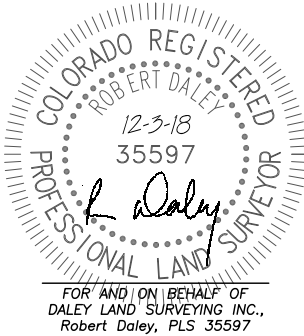


WELL LOCATION CERTIFICATE
BUNKER 8-9H
SECTION 29, TOWNSHIP 5 NORTH, RANGE 68 WEST OF THE 6TH P.M.



IN ACCORDANCE WITH A REQUEST FROM MAGPIE OIL AND GAS, DALEY LAND SURVEYING, INC. HAS DETERMINED THE SURFACE LOCATION OF THE BUNKER 8-9H WELL TO BE 2200' FSL, 2275' FWL, AS MEASURED AT NINETY (90) DEGREES FROM THE SECTION LINES OF SECTION 29, TOWNSHIP 5 NORTH, RANGE 68 WEST AND THE BOTTOM HOLE LOCATION TO BE 1326' FNL, 677' FWL, AS MEASURED AT NINETY (90) DEGREES FROM THE SECTION LINES OF SECTION 30, TOWNSHIP 5 NORTH, RANGE 68 WEST, OF THE 6TH PRINCIPAL MERIDIAN, LARIMER COUNTY, COLORADO.

I HEREBY STATE THAT THIS WELL LOCATION CERTIFICATE WAS PREPARED BY ME OR UNDER MY DIRECT SUPERVISION, THAT THE WORK WAS COMPLETED ON 9/10/2018 FOR AND ON BEHALF OF MAGPIE OIL AND GAS, AND THAT THIS MAP DOES NOT REPRESENT A BOUNDARY SURVEY, IT IS NOT A LAND SURVEY PLAT OR AN IMPROVEMENT SURVEY PLAT AND IT IS NOT TO BE RELIED UPON FOR THE ESTABLISHMENT OF FENCE, BUILDING OR OTHER FUTURE IMPROVEMENT LINES.



- NOTES:**
- BEARINGS FOR THIS MAP ARE ASSUMED AND BASED UPON GPS OBSERVATIONS MADE BETWEEN MONUMENTS LOCATED AT THE SOUTH QUARTER CORNER AND THE SOUTHWEST CORNER OF SECTION 29, T.5N., R.68W.
 - HORIZONTAL DATUM IS NAD83.
 - VERTICAL DATUM IS NAVD88 AND ORIGINATES FROM THE LOCAL C.O.R.S. NETWORK, UTILIZING THE GEOID12A MODEL.
 - SEE LOCATION DRAWING FOR VISIBLE IMPROVEMENTS WITHIN 500' OF PROPOSED DISTURBED AREA.
 - SURFACE USE: WELL PAD/AGRICULTURAL.
 - INST. OPERATOR: KYLE DALEY.

NEAREST CULTURAL ITEMS: BUILDING: 1973'± NW BUILDING UNIT: 1988'± SE HIGH OCC. BLD. UNIT: 5280'+ DES. OUTSIDE ACTIVITY AREA: 5280'+ PUBLIC ROAD: 2243'± W ABOVE GROUND UTILITY: 2228'± W RAILROAD: 5280'+ PROPERTY LINE: 348'± E		NAD 83 LATITUDE AND LONGITUDE SURFACE LOCATION: LATITUDE: N40.36989° LONGITUDE: W105.03201° ELEV: 4982' PDOP: 1.8 QTR/QTR: NE4/SW4 LANDING POINT/TPZ: LATITUDE: N40.37459° LONGITUDE: W105.02364° BOTTOM HOLE: LATITUDE: N40.37469° LONGITUDE: W105.05674°		LEGEND ◆ FOUND MONUMENT ◆ CALCULATED POSITION ☀ PROPOSED WELL ○ BOTTOM HOLE ○ ABANDONED WELL ⊗ EXISTING WELL TPZ TOP PRODUCING ZONE				DALEY LAND SURVEYING, INC. 17011 LINCOLN AVE. #301 PARKER, CO 303.953.9841	
---	--	--	--	---	--	--	--	---	--