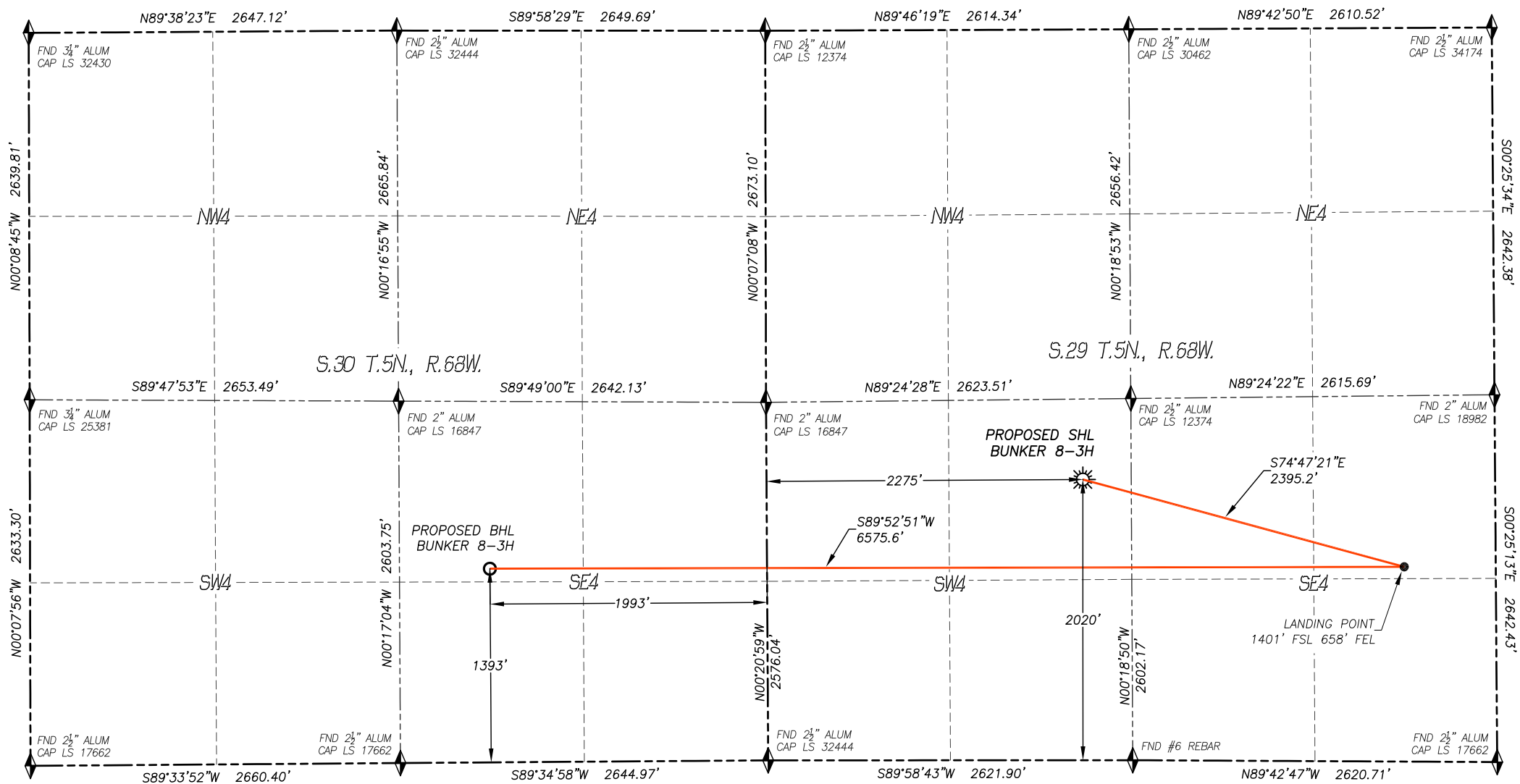
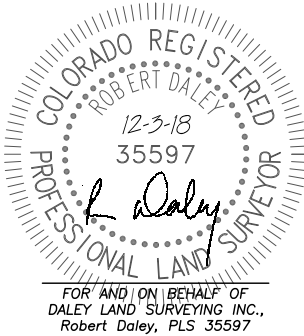


WELL LOCATION CERTIFICATE  
BUNKER 8-3H  
SECTION 29, TOWNSHIP 5 NORTH, RANGE 68 WEST OF THE 6TH P.M.



IN ACCORDANCE WITH A REQUEST FROM MAGPIE OIL AND GAS, DALEY LAND SURVEYING, INC. HAS DETERMINED THE SURFACE LOCATION OF THE BUNKER 8-3H WELL TO BE 2020' FSL, 2275' FWL, AS MEASURED AT NINETY (90) DEGREES FROM THE SECTION LINES OF SECTION 29, TOWNSHIP 5 NORTH, RANGE 68 WEST AND THE BOTTOM HOLE LOCATION TO BE 1393' FSL, 1993' FEL, AS MEASURED AT NINETY (90) DEGREES FROM THE SECTION LINES OF SECTION 30, TOWNSHIP 5 NORTH, RANGE 68 WEST, OF THE 6TH PRINCIPAL MERIDIAN, LARIMER COUNTY, COLORADO.

I HEREBY STATE THAT THIS WELL LOCATION CERTIFICATE WAS PREPARED BY ME OR UNDER MY DIRECT SUPERVISION, THAT THE WORK WAS COMPLETED ON 9/10/2018 FOR AND ON BEHALF OF MAGPIE OIL AND GAS, AND THAT THIS MAP DOES NOT REPRESENT A BOUNDARY SURVEY, IT IS NOT A LAND SURVEY PLAT OR AN IMPROVEMENT SURVEY PLAT AND IT IS NOT TO BE RELIED UPON FOR THE ESTABLISHMENT OF FENCE, BUILDING OR OTHER FUTURE IMPROVEMENT LINES.



- NOTES:**
- BEARINGS FOR THIS MAP ARE ASSUMED AND BASED UPON GPS OBSERVATIONS MADE BETWEEN MONUMENTS LOCATED AT THE SOUTH QUARTER CORNER AND THE SOUTHWEST CORNER OF SECTION 29, T.5N., R.68W.
  - HORIZONTAL DATUM IS NAD83.
  - VERTICAL DATUM IS NAVD88 AND ORIGINATES FROM THE LOCAL C.O.R.S. NETWORK, UTILIZING THE GEOID12A MODEL.
  - SEE LOCATION DRAWING FOR VISIBLE IMPROVEMENTS WITHIN 500' OF PROPOSED DISTURBED AREA.
  - SURFACE USE: WELL PAD/AGRICULTURAL.
  - INST. OPERATOR: KYLE DALEY.

<b>NEAREST CULTURAL ITEMS:</b> BUILDING: 1906'± SE BUILDING UNIT: 1859'± SE HIGH OCC. BLD. UNIT: 5280'± DES. OUTSIDE ACTIVITY AREA: 5280'± PUBLIC ROAD: 2244'± W ABOVE GROUND UTILITY: 2229'± W RAILROAD: 5280'± PROPERTY LINE: 348'± E		<b>NAD 83 LATITUDE AND LONGITUDE</b> <b>SURFACE LOCATION:</b> LATITUDE: N40.36940° LONGITUDE: W105.03201° ELEV: 4992' PDOP: 1.2 QTR/QTR: NE4/SW4 <b>LANDING POINT/TPZ:</b> LATITUDE: N40.36764° LONGITUDE: W105.02373° <b>BOTTOM HOLE:</b> LATITUDE: N40.36770° LONGITUDE: W105.04733°		<b>LEGEND</b> ◆ FOUND MONUMENT ◆ CALCULATED POSITION ☀ PROPOSED WELL ○ BOTTOM HOLE ○ ABANDONED WELL ⊗ EXISTING WELL TPZ TOP PRODUCING ZONE				<b>DALEY LAND SURVEYING, INC.</b> 17011 LINCOLN AVE. #301 PARKER, CO 303.953.9841	
-----------------------------------------------------------------------------------------------------------------------------------------------------------------------------------------------------------------------------------------------------------------	--	----------------------------------------------------------------------------------------------------------------------------------------------------------------------------------------------------------------------------------------------------------------------------------------------------------------------------	--	-----------------------------------------------------------------------------------------------------------------------------------------------------------------	--	--	--	-----------------------------------------------------------------------------------------	--