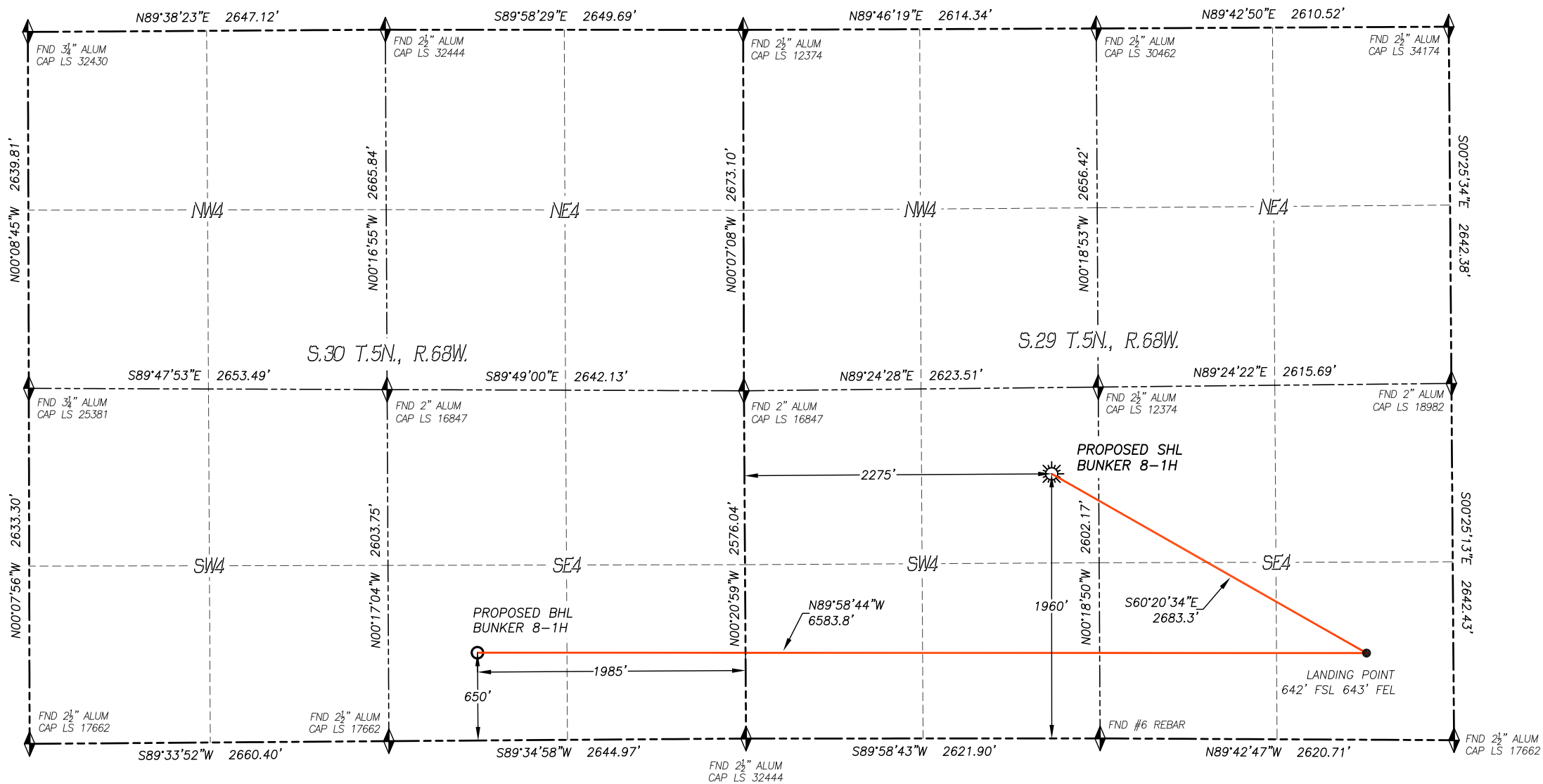
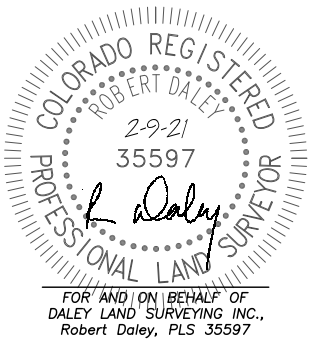


WELL LOCATION CERTIFICATE  
BUNKER 8-1H  
SECTION 29, TOWNSHIP 5 NORTH, RANGE 68 WEST OF THE 6TH P.M.



IN ACCORDANCE WITH A REQUEST FROM MAGPIE OIL AND GAS, DALEY LAND SURVEYING, INC. HAS DETERMINED THE SURFACE LOCATION OF THE BUNKER 8-1H WELL TO BE 1960' FSL, 2275' FWL, AS MEASURED AT NINETY (90) DEGREES FROM THE SECTION LINES OF SECTION 29, TOWNSHIP 5 NORTH, RANGE 68 WEST AND THE BOTTOM HOLE LOCATION TO BE 650' FSL, 1985' FWL, AS MEASURED AT NINETY (90) DEGREES FROM THE SECTION LINES OF SECTION 30, TOWNSHIP 5 NORTH, RANGE 68 WEST, OF THE 6TH PRINCIPAL MERIDIAN, LARIMER COUNTY, COLORADO.

I HEREBY STATE THAT THIS WELL LOCATION CERTIFICATE WAS PREPARED BY ME OR UNDER MY DIRECT SUPERVISION, THAT THE WORK WAS COMPLETED ON 9/10/2018 FOR AND ON BEHALF OF MAGPIE OIL AND GAS, AND THAT THIS MAP DOES NOT REPRESENT A BOUNDARY SURVEY, IT IS NOT A LAND SURVEY PLAT OR AN IMPROVEMENT SURVEY PLAT AND IT IS NOT TO BE RELIED UPON FOR THE ESTABLISHMENT OF FENCE, BUILDING OR OTHER FUTURE IMPROVEMENT LINES.



NOTES:

- BEARINGS FOR THIS MAP ARE ASSUMED AND BASED UPON GPS OBSERVATIONS MADE BETWEEN MONUMENTS LOCATED AT THE SOUTH QUARTER CORNER AND THE SOUTHWEST CORNER OF SECTION 29, T.5N., R.68W.
- HORIZONTAL DATUM IS NAD83.
- VERTICAL DATUM IS NAVD88 AND ORIGINATES FROM THE LOCAL C.O.R.S. NETWORK, UTILIZING THE GEOID12A MODEL.
- SEE LOCATION DRAWING FOR VISIBLE IMPROVEMENTS WITHIN 500' OF PROPOSED DISTURBED AREA.
- SURFACE USE: WELL PAD/AGRICULTURAL.
- INST. OPERATOR: KYLE DALEY.

NEAREST CULTURAL ITEMS:

BUILDING:	1861'± SE
BUILDING UNIT:	1818'± SE
HIGH OCC. BLD. UNIT:	5280'±
DES. OUTSIDE ACTIVITY AREA:	5280'±
PUBLIC ROAD:	1959'± S
ABOVE GROUND UTILITY:	2229'± W
RAILROAD:	5280'±
PROPERTY LINE:	348'± E

NAD 83 LATITUDE AND LONGITUDE

SURFACE LOCATION:

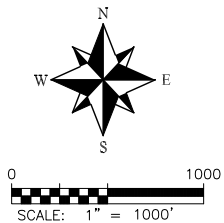
LATITUDE: N40.36923°  
LONGITUDE: W105.03201°  
ELEV: 4997'  
PDOP: 1.2  
QTR/QTR: NE4/SW4

LANDING POINT/TPZ:

LATITUDE: N40.36556°  
LONGITUDE: W105.02367°  
  
BOTTOM HOLE:  
LATITUDE: N40.36566°  
LONGITUDE: W105.04729°

LEGEND

- FOUND MONUMENT
- CALCULATED POSITION
- PROPOSED WELL
- BOTTOM HOLE
- ABANDONED WELL
- EXISTING WELL
- TPZ TOP PRODUCING ZONE



DALEY LAND  
SURVEYING, INC.  
17011 LINCOLN AVE. #361  
PARKER, CO 80138  
303.953.9841