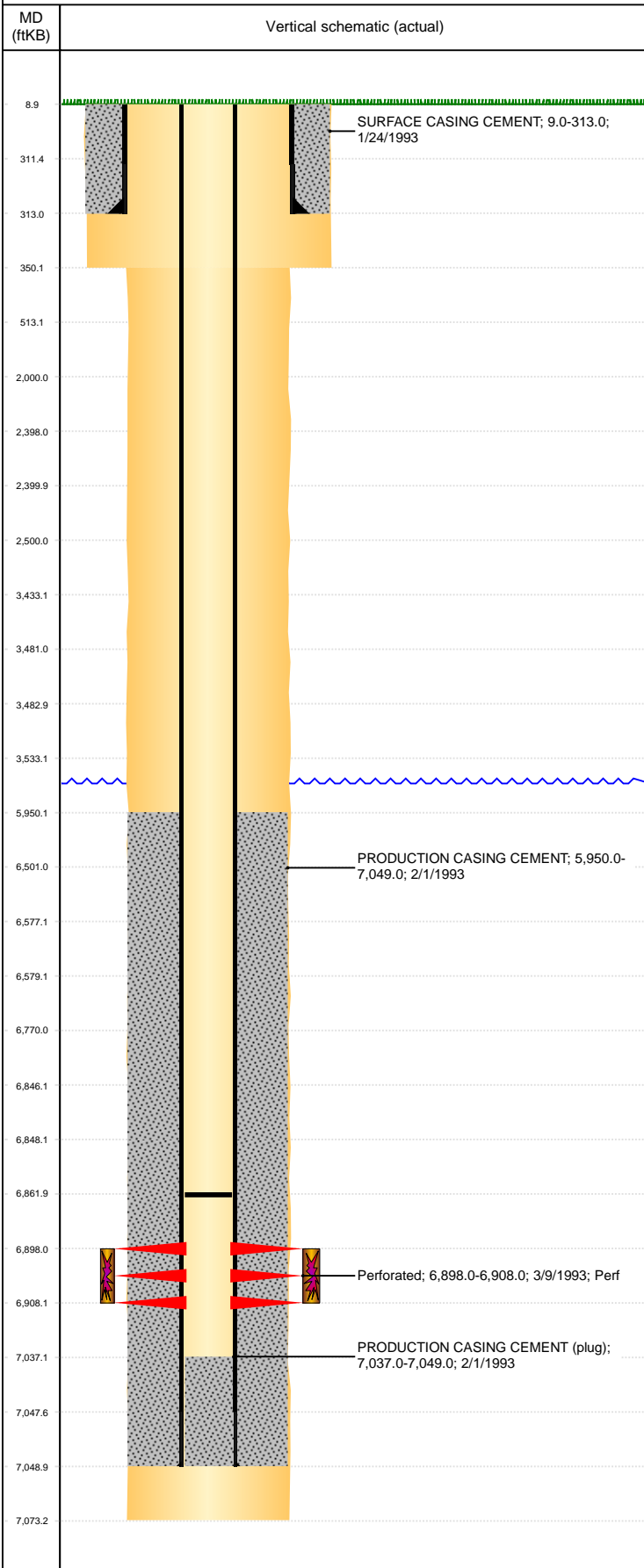


Well Name: SINJIN E36-06

VERTICAL, ORIGINAL HOLE, 2/9/2021 5:58:35 PM



Well Header									
API 05-123-16354		Business Unit DJ BASIN			District 15		Well Config VERTICAL		
KB - GL / MSL (ft... 9.00		Spud Date 1/23/1993		P & A Date		Well Production Status PR			SoRT No
Comment NO TBG INFO FOUND IN FILE									
Surface Location (Congressional)									
Qtr 3 SE	Qtr 4 NW	Section 36	Twnshp 6	Twnsh... N	Range 65	Rng E/... W	Actual Latitude (°) 40.44420500	Actual Longitude (°) -104.61372805	
Wellbore Sections									
Section Des			Size (in)			Act Top, MD (ftKB)		Act Btm, MD (ftKB)	
SURFACE			12 1/4			9		350	
PRODUCTION			7 7/8			350		7,073	
Casing Strings									
Csg Des			Run Date		OD (in)	Wt/Len (lb/ft)	Grade	Top, MD (ftKB)	MD (ftKB)
Surface			1/24/1993		8 5/8	24.00	?	9.0	313.0
Production			1/31/1993		2 7/8	7.90	PH-6	9.0	7,049.0
Cement									
Des					Start Date		Top (ftKB)		Btm (ftKB)
SURFACE CASING CEMENT					1/24/1993		9.0		313.0
PRODUCTION CASING CEMENT					2/1/1993		5,950.0		7,049.0
Zone Statuses									
Zone Name	Status Date	Status	Fluid Type	Job				Prod Method	
CODELL	3/31/1993	PR	Oil					Flowing	
CODELL	6/4/2010	PR	Water					Flowing	
Perforation Data									
Linked Zone		Bnch/Stg	Entered Shot Total	Top (ftKB)		Btm (ftKB)		Date	
CODELL, ORIGINAL HOLE			40	6,898.00		6,908.00		3/9/1993	
Stimulation Intervals									
Zone				Start Date		Top (ftKB)		Btm (ftKB)	
CODELL, ORIGINAL HOLE				3/10/1993		6,898.0		6,908.0	
Other In Hole									
Run Date	Des				Make		OD (in)	Top (ftKB)	Btm (ftKB)
Logs									
Date		Type					Top, MD (ftKB)		Btm, MD (ftKB)
1/31/1993		COMPENSATED DENSITY					3,184.0		7,039.0
1/31/1993		INDUCTION					3,184.0		3,800.0
2/17/1993		CEMENT BOND					5,850.0		7,030.0
Plug Back Total Depths									
Date		Type			Com				Depth (ftKB)
2/17/1993		FILL			DEPTH LOGGER ON CBL				7,037.0
2/25/1994		FILL			TAG				6,862.0