

K3 Oil & Gas Operating Company, James 6-3
073-06739

Inspection #688309673

2/5/2021

PA Inspection



COLORADO

**Oil & Gas Conservation
Commission**

Department of Natural Resources



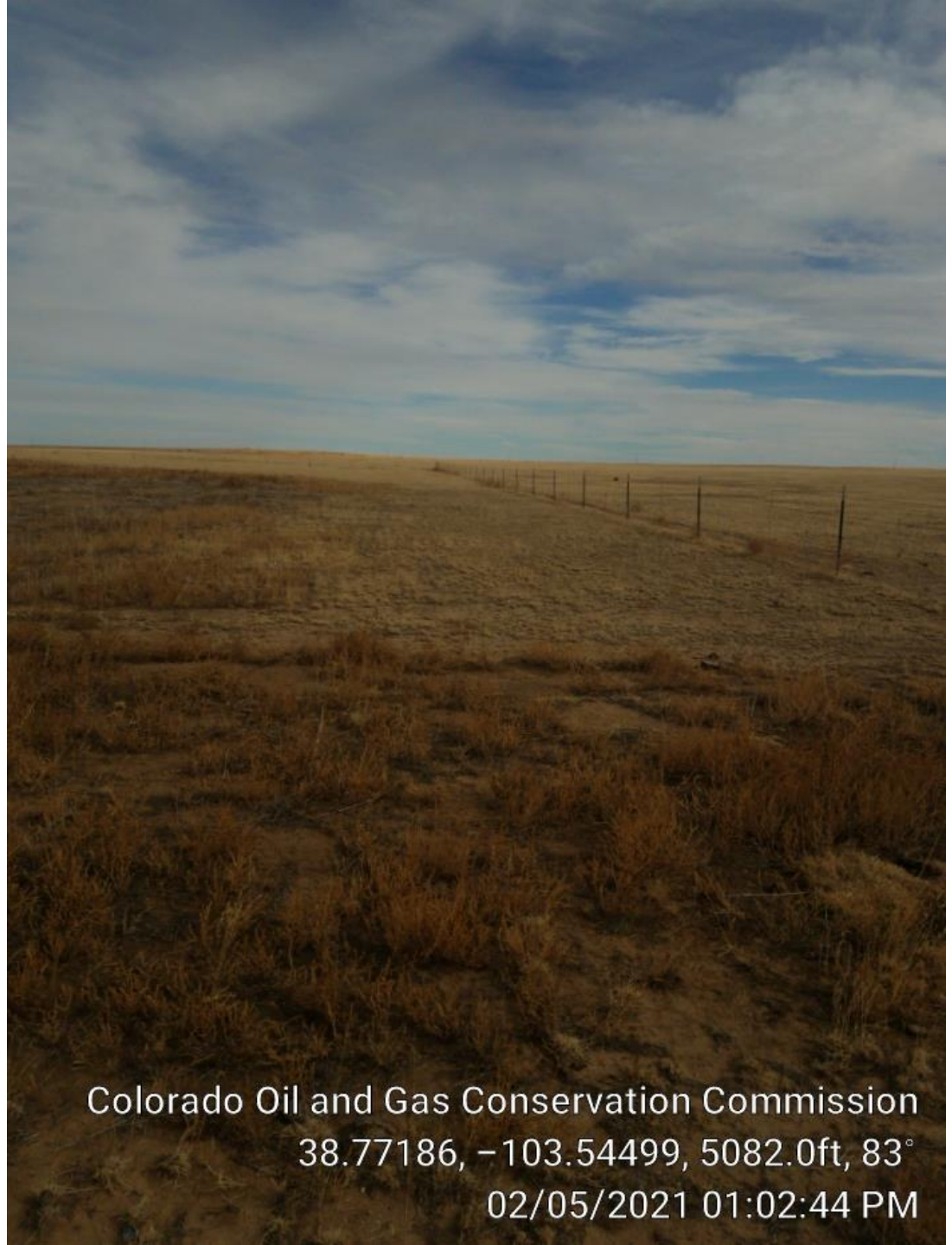
Colorado Oil and Gas Conservation Commission

38.77173, -103.54498, 5068.9ft, 24°

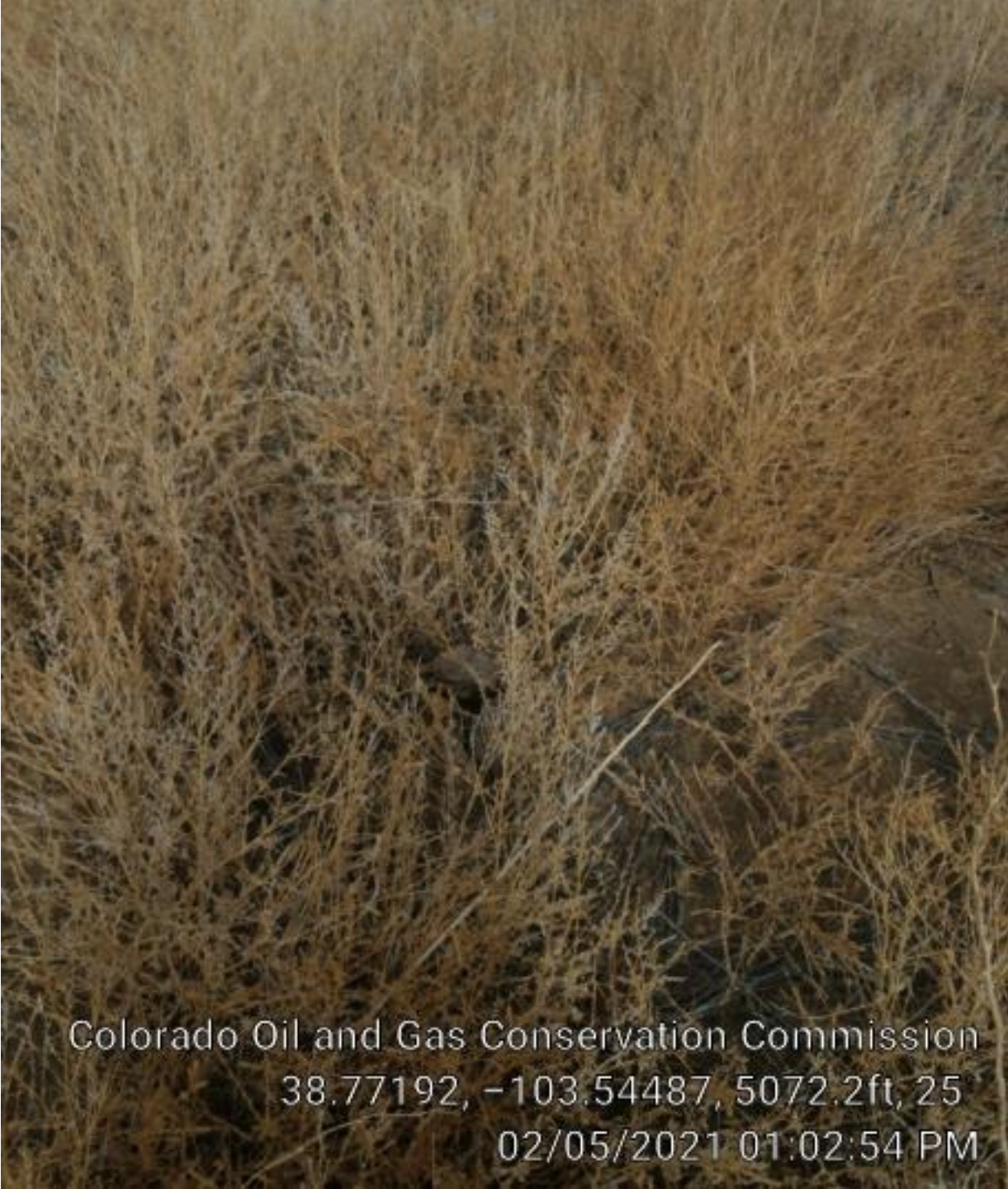
02/05/2021 01:02:06 PM



Colorado Oil and Gas Conservation Commission
38.7718, -103.54504, 5082.0ft, 26°
02/05/2021 01:02:30 PM




Colorado Oil and Gas Conservation Commission
38.77186, -103.54499, 5082.0ft, 83°
02/05/2021 01:02:44 PM




Weeds on
location.


Colorado Oil and Gas Conservation Commission
38.77192, -103.54487, 5072.2ft, 25
02/05/2021 01:02:54 PM

A wide-angle photograph of a flat, open landscape. The ground is covered with sparse, dry, brownish vegetation, possibly grasses or shrubs, interspersed with patches of light-colored soil. The horizon is a straight line in the distance under a clear, pale blue sky. The overall scene suggests a semi-arid or high-altitude environment.

Colorado Oil and Gas Conservation Commission
38.77201, -103.54485, 5075.5ft, 37°
02/05/2021 01:03:11 PM

A wide-angle photograph of a flat, open landscape. The foreground and middle ground are covered in sparse, dry, yellowish-brown grass and low-lying shrubs. The ground appears sandy or silty. The horizon is a straight line in the distance. The sky is filled with soft, grey clouds, with a darker blue patch near the top center. The overall lighting is somewhat dim, suggesting an overcast day.

Colorado Oil and Gas Conservation Commission
38.77233, -103.54488, 5072.2ft, 355°
02/05/2021 01:03:46 PM

A wide-angle photograph of a vast, flat landscape. The foreground and middle ground are covered in dry, brown grass and sparse vegetation. The horizon is a straight line in the distance. The sky is filled with light, wispy clouds, with some darker patches of blue visible. The overall scene is desolate and open.

Colorado Oil and Gas Conservation Commission

38.77234, -103.54486, 5072.2ft, 64°

02/05/2021 01:03:50 PM



Colorado Oil and Gas Conservation Commission
38.7725, -103.54433, 5078.7ft, 59°
02/05/2021 01:04:35 PM



No grasses
established
on location.

Colorado Oil and Gas Conservation Commission
38.77265, -103.54401, 5072.2ft, 211°
02/05/2021 01:05:08 PM



Colorado Oil and Gas Conservation Commission
38.77266, -103.54402, 5072.2ft, 166°
02/05/2021 01:05:10 PM



SE cor has
native
vegetation,
blue grama.

Colorado Oil and Gas Conservation Commission
38.77224, -103.54374, 5075.5ft, 145°
02/05/2021 01:06:00 PM



SE cor has
native
vegetation,
blue grama.

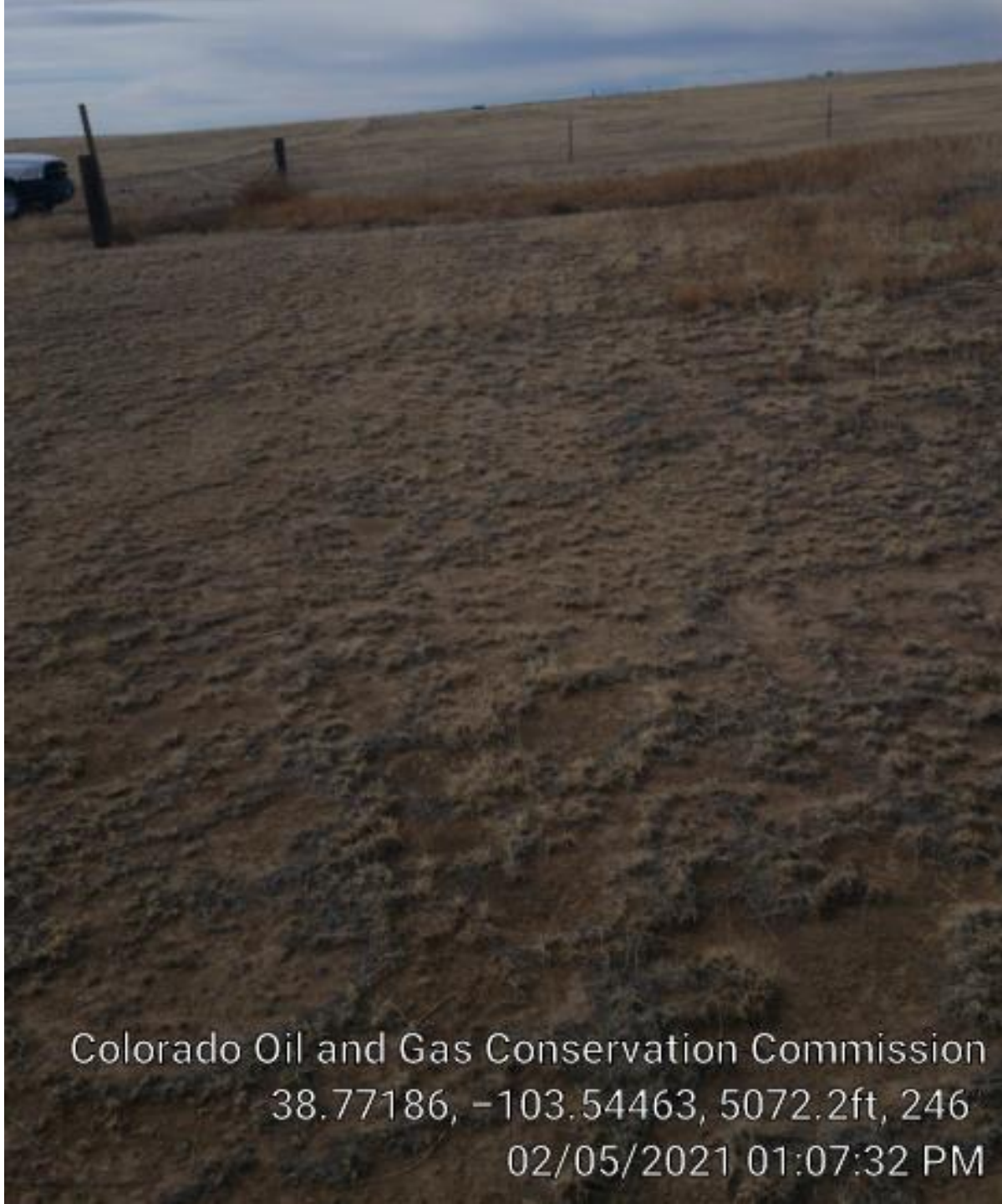
Colorado Oil and Gas Conservation Commission
38.77222, -103.54374, 5075.5ft, 208°
02/05/2021 01:06:06 PM



Colorado Oil and Gas Conservation Commission

332°

02/05/2021 01:06:25 PM



Entrance has some native grass, blue grama.

Colorado Oil and Gas Conservation Commission
38.77186, -103.54463, 5072.2ft, 246
02/05/2021 01:07:32 PM