



Terra Energy Partners, LLC

LONG STRING POST JOB REPORT

FEDERAL RWF 421-8 05-045-24313
S:8 T:6S R:94W Garfield CO

CallSheet #: 75359
Proposal #: 50570



LONG STRING Post Job Report

Attention: Mr. Lynn Cass | (970) 263-2716 | lcass@terraep.com
Terra Energy Partners, LLC
4828 Loop Central Dr., Suite 900 | Houston, TX 77081

Dear Mr. Lynn Cass,

Thank you for the opportunity to provide cementing services on this well. American Cementing strives to achieve complete customer satisfaction. If you have any questions regarding the services or data provided, please contact American Cementing at any time.

Sincerely,

Zen Keith

Field Engineer | (307) 757-7178 | zen.keith@americancementing.com

Field Office 28730 US-6, Rifle, CO 81650
Phone: (970) 305-4888

Table of Contents

1 Job Details & Summary	3
Geometry.....	3
Equipment / People	3
Timing	3
General Job Information.....	3
Well Fluid Details	3
Job Details.....	3
Job Details (cont.)	3
Circulation.....	3
Job Execution Information.....	4
Job Fluid Details	4
2 Job Logs	4
3 Water Analysis	5
4 Pump Diagrams	5

1 Job Details & Summary

Geometry

Type	Function	OD (in)	ID (in)	Weight (lb/ft)	Top (ft)	Bottom (ft)	Excess (%)
Casing	Outer	9.625	8.921	36	0	1040	0
Open Hole	Outer	n/a	8.75	n/a	1000	9925	30
Casing	Inner	4.5	4	11.6	0	9918.11	0

Equipment / People

Unit Type	Unit	Power Unit	Employee #1	Mileage
Bulk Trailer	CTF-280	TRB-090	Richey, Steven	30
Silo	Silo #25			
Cement Pump	CPF-058	TRH-677	Mcneal, Lawrence	30
Light Duty Pickups	LDV-5429		Castillo, Francisco	30

Timing

Event	Date/Time
Call Out	11/13/2020 00:00
Depart Facility	11/13/2020 01:30
On Location	11/13/2020 02:00
Rig Up Iron	11/13/2020 02:45
Job Started	11/13/2020 05:53
Job Completed	11/13/2020 07:35
Rig Down Iron	11/13/2020 07:45
Depart Location	11/13/2020 09:00

General Job Information

Metrics	Value
Well Fluid Density	11.3 lb/gal
Well Fluid Type	WBM
Rig Circulation Vol	600 bbls
Rig Circulation Time	1 hours
Calculated Displacement	153 bbls
Actual Displacement	153 bbls
Total Spacer to Surface	0 bbls
Total CMT to Surface	0 bbls
Well Topped Out	No

Well Fluid Details

Metrics	Value
Plastic Viscosity	20
Yield Point	16
10 sec. SGS	7
10 min. SGS	22
30 min. SGS	44
Filtrate	0
Flow Line Temp.	120

Job Details

Metrics	Value
Flare Prior to Job	No
Flare During Job	No
Flare at End of Job	No
Well Full Prior to Job	Yes
Well Fluid Density Into Well	11.3 lb/gal
Well Fluid Density Out of Well	11.3 lb/gal

Job Details (cont.)

Metrics	Value
BHCT	164 °F
BHST	234 °F

Circulation

Lost Circulation Experienced
No

Job Execution Information

Job	Fluid	Product	Function	Density (lb/gal)	Yield (ft ³ /sk)	Water Rq. (gal/sk)	Water Rq. (gal/bbl)	Volume (sk)	Volume (bbl)	Top (ft)
1	1	Water	Flush	8.34			42.00		10.00	4413
1	2	Mud Flush	Flush	8.45			40.86		20.00	4554
1	3	Water	Flush	8.34			42.00		10.00	4835
1	4	Primary Cement	Primary	14.20	1.72	8.08		1134.00	347.84	4976
1	5	Displacement	DisplacementFinal	8.34			42.00		153.00	0

Job Fluid Details

Job	Fluid	Type	Fluid	Product	Function	Conc.	Uom
1	2	Flush	Mud Flush	SAPP	Surfactant	10.00	lb/bbl
1	2	Flush	Mud Flush	SS-201	Surfactant	0.50	gal/bbl
1	4	Primary	Primary Cement	CLASS G	Cement	80.00	%
1	4	Primary	Primary Cement	FLY ASH (POZZOLAN)	Extender	20.00	%
1	4	Primary	Primary Cement	FL-66	FluidLoss	0.40	%BWOB
1	4	Primary	Primary Cement	FP-24	Defoamer	0.30	%BWOB
1	4	Primary	Primary Cement	GW-86	Viscosifier	0.10	%BWOB
1	4	Primary	Primary Cement	IntegraSeal POLI	LostCirculation	0.25	lb/sk
1	4	Primary	Primary Cement	R-3	Retarder	0.30	%BWOB
1	4	Primary	Primary Cement	S-8	StrengthRetrogression	27.00	%BWOB

2 Job Logs

Line	Event	Date (MM/DD/YY)	Time (HH:MM)	Density (lb/gal)	Pump Rate (bpm)	Pump Volume (bbls)	Pipe Pressure (psi)	Comment
1	CALLOUT	11/13/2020	00:00					ON LOCATION AT 04:00 HRS
2	LEAVE THE YARD	11/13/2020	01:30					LEAVE THE YARD
3	ON LOCATION	11/13/2020	02:00					ON LOCATION, RIG RUNNING CASING
4	RIG UP	11/13/2020	02:45					RIG UP MEETING, RIG UP
5	SAFETY MEETING	11/13/2020	05:15					PRE-JOB SAFETY MEETING
6	PRESSURE TEST	11/13/2020	05:50				5030	PRESSURE TEST LINES
7	PUMP SPACER	11/13/2020	05:53	8.34	7	10	1210	WATER SPACER
8	PUMP SPACER	11/13/2020	05:54	8.35	7	20	1219	MUD FLUSH SPACER
9	PUMP SPACER	11/13/2020	05:57	8.34	7	10	1257	WATER SPACER
10	PUMP CEMENT	11/13/2020	06:04	14.2	7.5	50	1570	1134 SKS / 347 BBLS AT 14.2 PPG
11	PUMP CEMENT	11/13/2020	06:11	14.2	7	50	1267	100 BBLS CEMENT PUMPED
12	PUMP CEMENT	11/13/2020	06:21	14.2	7.5	50	943	150 BBLS CEMENT PUMPED
13	PUMP CEMENT	11/13/2020	06:29	14.2	7.5	50	1015	200 BBLS CEMENT PUMPED
14	PUMP CEMENT	11/13/2020	06:36	14.2	7.5	50	955	250 BBLS CEMENT PUMPED
15	PUMP CEMENT	11/13/2020	06:43	14.2	7	50	943	300 BBLS CEMENT PUMPED
16	PUMP CEMENT	11/13/2020	06:50	14.2	6	47	709	347 BBLS CEMENT PUMPED
17	SHUTDOWN	11/13/2020	07:05					SHUTDOWN, WASH LINES, DROP PLUG
18	DISPLACEMENT	11/13/2020	07:16	8.4	10	50	2013	DISPLACEMENT KCL
19	DISPLACEMENT	11/13/2020	07:22	8.4	10	93	3195	143 BBLS DISPLACEMENT PUMPED
20	DISPLACEMENT	11/13/2020	07:30	8.4	4	10	2535	SLOW RATE
21	LAND PLUG	11/13/2020	07:35				3537	LAND PLUG, FULL RETURNS
22	CHECK FLOATS	11/13/2020	07:37					FLOATS HELD, 2 BBLS FLOW BACK
23	RIG DOWN	11/13/2020	07:45					RIG DOWN MEETING, RIG DOWN
24	LEAVE LOCATION	11/13/2020	09:00					CREW LEAVE LOCATION

3 Water Analysis

Metrics	Value	Recommended
Water Source	None	
Temperature	70 °F	50-80 °F
pH Level	7	5.5-8.5
Chlorides	0 mg/L	0-3000 mg/L
Total Alkalinity	240	0-1000
Total Hardness	250 mg/L	0-500 mg/L
Carbonates	0 mg/L	0-100 mg/L
Sulfates	200 mg/L	0-1500 mg/L
Potassium	250 mg/L	0-3000 mg/L
Iron	0 mg/L	0-300 mg/L

4 Pump Diagrams

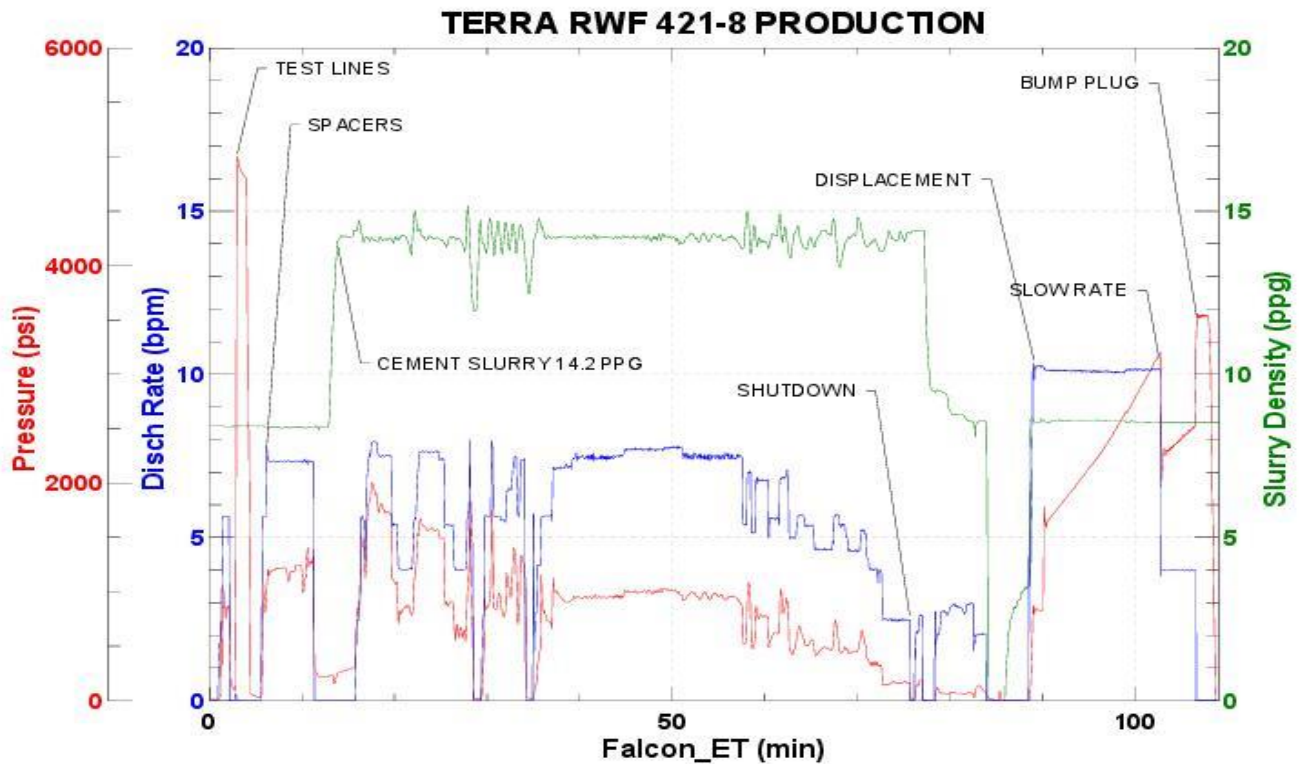


JobMaster Program Version 5.01C 1

Job Number:

Customer:

Well Name:



BJ Services

Job Start: Friday, November 13, 2020