



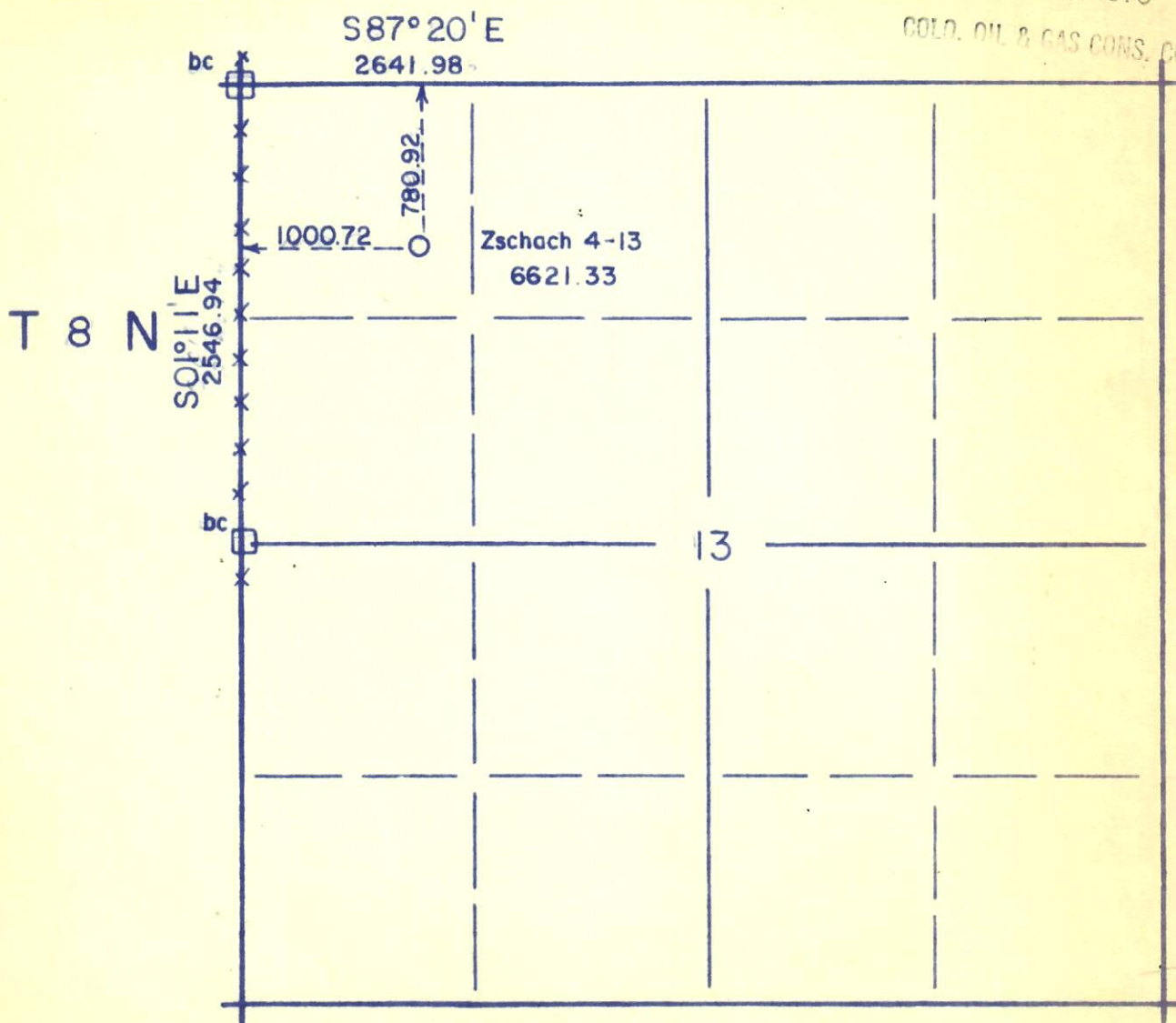
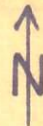
00254541

R 90 W

RECEIVED

JAN 4 1978

GOLD. OIL & GAS CONS. COMM.

**SURVEYOR'S CERTIFICATE**

I, Martin A. Pedersen, of Rawlins, Wyoming, hereby certify that this plat was made from notes taken on a survey made under my supervision on December 29, 1977, and that it correctly represents the location "Zschach 4-13" as staked in the field.

Wyo. Reg. No. 544, L.S. Martin A. Pedersen

Ref. Point 200' North = 6625.36
 Ref. Point 200' South = 6610.96
 Ref. Point 200' East = 6613.46
 Ref. Point 200' West = 6605.76

Elevations referred to the Northwest corner of Sec. 13, T8N, R90W = 6651.00

WELL LOCATION

Zschach 4 - 13

FOR

Chandler & Associates, Inc.

IN

NW 1/4 NW 1/4 Sec. 13, T8N, R90W

Moffat County

Colorado

ROBERT JACK SMITH & ASSOC.
 CONSULTING ENGINEER & LAND SURVEYOR
 RAWLINS, WYO.

Scale: 1" = 1000'

Map File No. 37