

Well Name:
DEHAAN 8X-HNB-16-07-65

Project Name:
Sec. 17-T7N-R65W

Pad Name:
DEHAAN 8X-HNB-16-07-65

ANNOTATIONS

MD	Inc	Azi	TVD	+N/-S	+E/-W	VSect	Departure	Annotation
700.00	0.00	0.00	700.00	0.00	0.00	0.00	0.00	Start Build 2.00
1075.95	7.52	223.58	1074.88	-17.85	-16.98	-14.12	24.63	Hold 7.52 Inc, 223.58 Az
6481.77	7.52	223.58	6434.21	-530.30	-504.61	-419.50	732.02	KOP 8°/100
7674.33	90.34	91.13	7209.93	-620.50	211.37	301.91	1470.71	LP 90.34 Inc, 91.13 Az
12143.59	90.34	91.13	7183.41	-708.96	4679.68	4733.07	5939.89	TD at 12143.59

Geodetic Datum:

North American Datum 1983
US State Plane 1983, Colorado Northern Zone

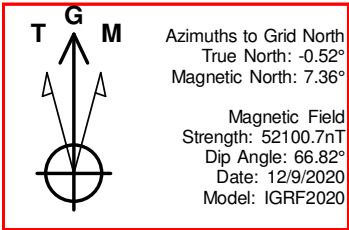
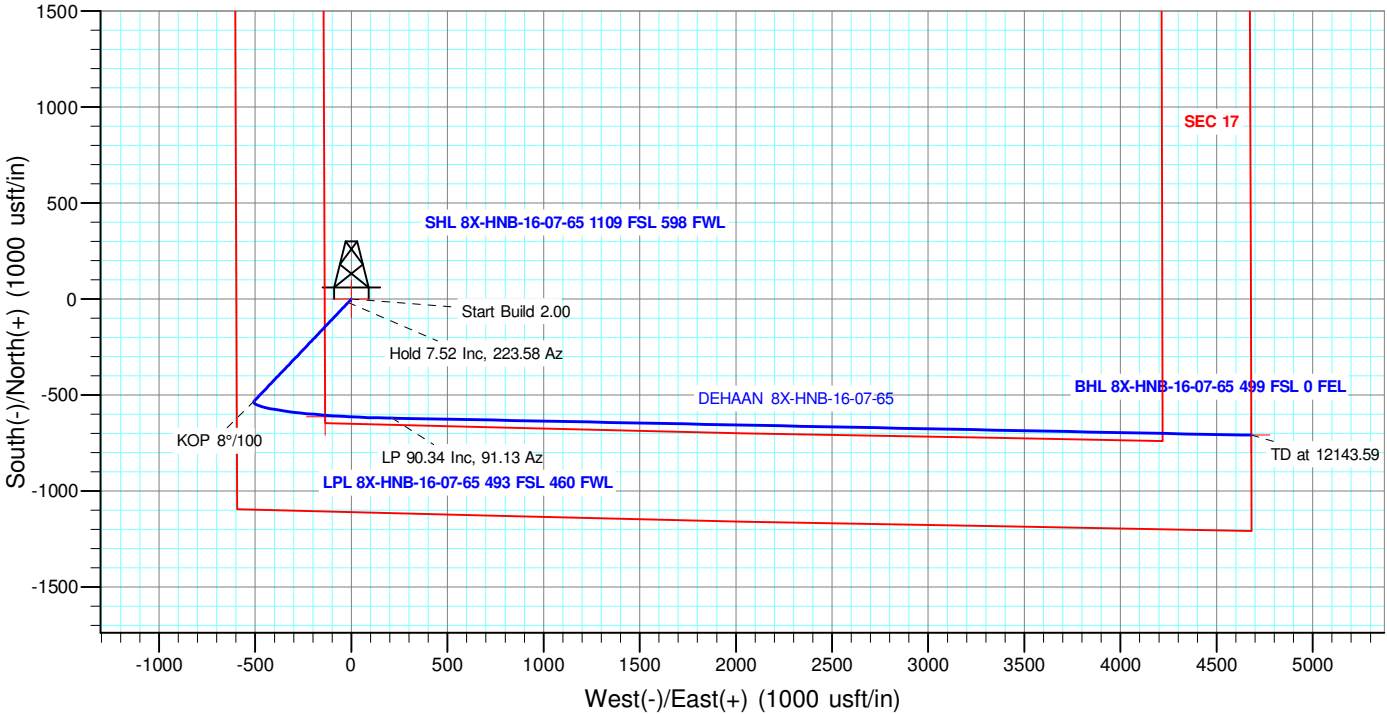
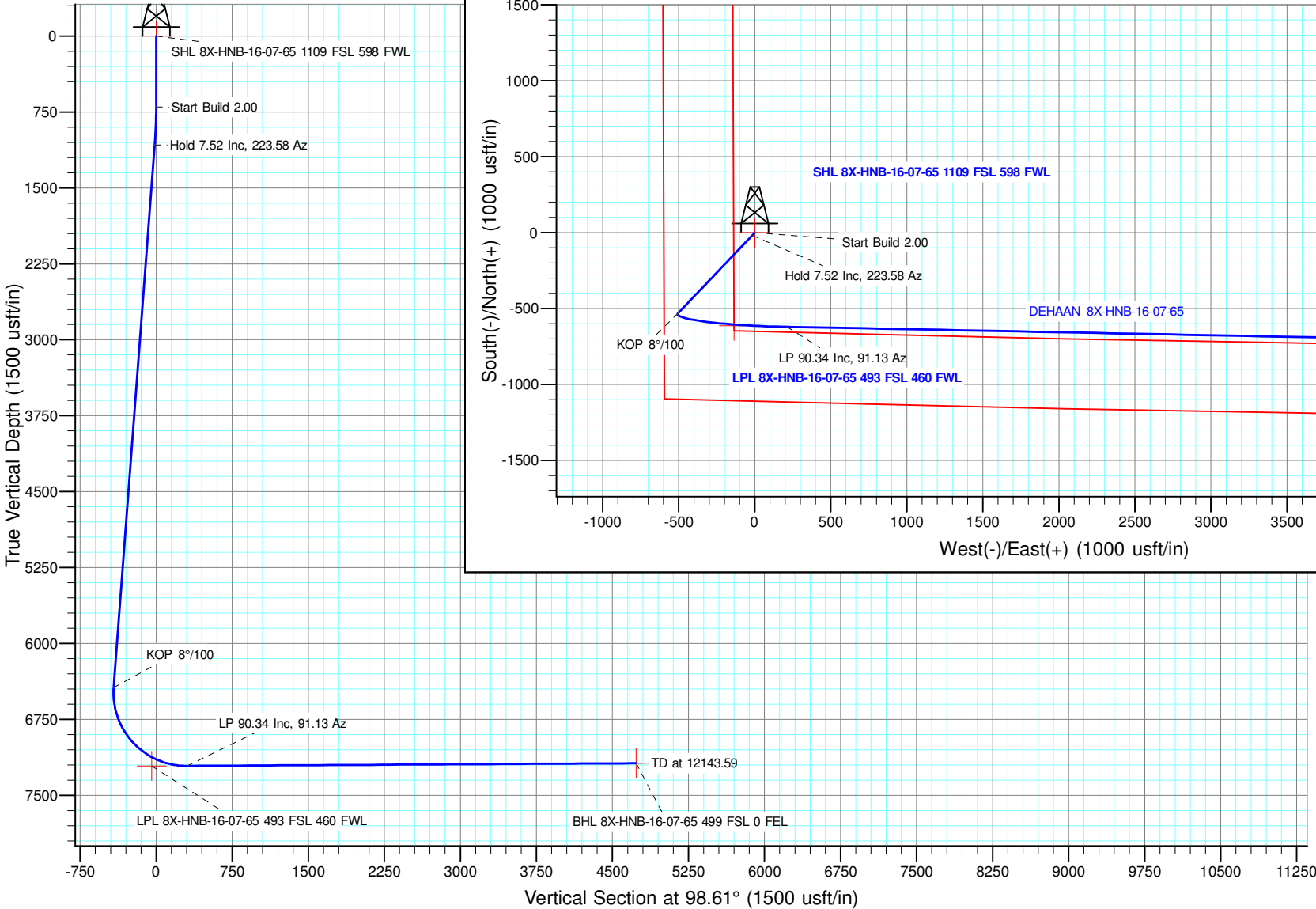
Elevation:

Ground Elevation: 4908.00
KB Elevation: KB @ 4924.00usft

DESIGN TARGET DETAILS

Name	TVD	+N/-S	+E/-W	Northing	Easting	Latitude	Longitude	Shape
SHL 8X-HNB-16-07-65 1109 FSL 598 FWL	1109	0.00	0.00	1451793.240	3223818.370	40.570781	-104.694333	Point
BHL 8X-HNB-16-07-65 499 FSL 0 FEL	499	-708.84	4679.68	1451084.397	3228498.048	40.568717	-104.677512	Point
LPL 8X-HNB-16-07-65 493 FSL 460 FWL	460	-613.50	-135.96	1451179.738	3223682.412	40.569100	-104.694842	Point

plan misses target center by 77.95usft at 7350.00usft MD (7139.94 TVD, 607.29 N, -102.21 E)



NICKEL ROAD

O P E R A T I N G

Nickel Road Operating

Sec. 17-T7N-R65W

DEHAAN 8X-HNB-16-07-65

DEHAAN 8X-HNB-16-07-65

Wellbore #1

Plan: Design #1

Standard Planning Report - Geographic

16 December, 2020

Database:	EDM 5000.15 Single User Db	Local Co-ordinate Reference:	Well DEHAAN 8X-HNB-16-07-65
Company:	Nickel Road Operating	TVD Reference:	KB @ 4924.00usft
Project:	Sec. 17-T7N-R65W	MD Reference:	KB @ 4924.00usft
Site:	DEHAAN 8X-HNB-16-07-65	North Reference:	Grid
Well:	DEHAAN 8X-HNB-16-07-65	Survey Calculation Method:	Minimum Curvature
Wellbore:	Wellbore #1		
Design:	Design #1		

Project	Sec. 17-T7N-R65W		
Map System:	US State Plane 1983	System Datum:	Mean Sea Level
Geo Datum:	North American Datum 1983		
Map Zone:	Colorado Northern Zone		

Site		DEHAAN 8X-HNB-16-07-65			
Site Position:		Northing:	1,451,793.240 usft	Latitude:	40.570781
From:	Map	Easting:	3,223,818.370 usft	Longitude:	-104.694333
Position Uncertainty:	0.00 usft	Slot Radius:	13-3/16 "	Grid Convergence:	0.52 °

Well	DEHAAN 8X-HNB-16-07-65					
Well Position	+N/-S	0.00 usft	Northing:	1,451,793.240 usft	Latitude:	40.570781
	+E/-W	0.00 usft	Easting:	3,223,818.370 usft	Longitude:	-104.694333
Position Uncertainty		0.00 usft	Wellhead Elevation:		Ground Level:	4,908.00 usft

Wellbore	Wellbore #1				
Magnetics	Model Name	Sample Date	Declination (°)	Dip Angle (°)	Field Strength (nT)
	IGRF2020	12/9/2020	7.88	66.82	52,100.73650418

Design	Design #1			
Audit Notes:				
Version:	Phase:	PLAN	Tie On Depth:	0.00
Vertical Section:	Depth From (TVD) (usft)	+N/-S (usft)	+E/-W (usft)	Direction (°)
	0.00	0.00	0.00	98.61

Plan Survey Tool Program	Date	12/16/2020		
Depth From (usft)	Depth To (usft)	Survey (Wellbore)	Tool Name	Remarks
1	0.00	12,143.56 Design #1 (Wellbore #1)	MWD	
			OWSG MWD - Standard	

Plan Sections										
Measured Depth (usft)	Inclination (°)	Azimuth (°)	Vertical Depth (usft)	+N/-S (usft)	+E/-W (usft)	Dogleg Rate (°/100usft)	Build Rate (°/100usft)	Turn Rate (°/100usft)	TFO (°)	Target
0.00	0.00	0.00	0.00	0.00	0.00	0.00	0.00	0.00	0.00	
700.00	0.00	0.00	700.00	0.00	0.00	0.00	0.00	0.00	0.00	
1,075.95	7.52	223.58	1,074.88	-17.85	-16.98	2.00	2.00	0.00	223.58	
6,481.77	7.52	223.58	6,434.21	-530.30	-504.61	0.00	0.00	0.00	0.00	
7,674.33	90.34	91.13	7,209.93	-620.50	211.37	8.00	6.94	-11.11	-132.16	
12,143.59	90.34	91.13	7,183.50	-708.84	4,679.68	0.00	0.00	0.00	0.00	

Database:	EDM 5000.15 Single User Db	Local Co-ordinate Reference:	Well DEHAAN 8X-HNB-16-07-65
Company:	Nickel Road Operating	TVD Reference:	KB @ 4924.00usft
Project:	Sec. 17-T7N-R65W	MD Reference:	KB @ 4924.00usft
Site:	DEHAAN 8X-HNB-16-07-65	North Reference:	Grid
Well:	DEHAAN 8X-HNB-16-07-65	Survey Calculation Method:	Minimum Curvature
Wellbore:	Wellbore #1		
Design:	Design #1		

Planned Survey									
Measured Depth (usft)	Inclination (°)	Azimuth (°)	Vertical Depth (usft)	+N/-S (usft)	+E/-W (usft)	Map Northing (usft)	Map Easting (usft)	Latitude	Longitude
0.00	0.00	0.00	0.00	0.00	0.00	1,451,793.240	3,223,818.370	40.570781	-104.694333
SHL 8X-HNB-16-07-65 1109 FSL 598 FWL									
100.00	0.00	0.00	100.00	0.00	0.00	1,451,793.240	3,223,818.370	40.570781	-104.694333
200.00	0.00	0.00	200.00	0.00	0.00	1,451,793.240	3,223,818.370	40.570781	-104.694333
300.00	0.00	0.00	300.00	0.00	0.00	1,451,793.240	3,223,818.370	40.570781	-104.694333
400.00	0.00	0.00	400.00	0.00	0.00	1,451,793.240	3,223,818.370	40.570781	-104.694333
500.00	0.00	0.00	500.00	0.00	0.00	1,451,793.240	3,223,818.370	40.570781	-104.694333
600.00	0.00	0.00	600.00	0.00	0.00	1,451,793.240	3,223,818.370	40.570781	-104.694333
700.00	0.00	0.00	700.00	0.00	0.00	1,451,793.240	3,223,818.370	40.570781	-104.694333
Start Build 2.00									
800.00	2.00	223.58	799.98	-1.26	-1.20	1,451,791.976	3,223,817.167	40.570777	-104.694337
900.00	4.00	223.58	899.84	-5.06	-4.81	1,451,788.185	3,223,813.559	40.570767	-104.694350
1,000.00	6.00	223.58	999.45	-11.37	-10.82	1,451,781.871	3,223,807.552	40.570750	-104.694372
1,075.95	7.52	223.58	1,074.88	-17.85	-16.98	1,451,775.395	3,223,801.389	40.570732	-104.694395
Hold 7.52 Inc, 223.58 Az									
1,100.00	7.52	223.58	1,098.72	-20.12	-19.15	1,451,773.115	3,223,799.220	40.570726	-104.694402
1,200.00	7.52	223.58	1,197.86	-29.60	-28.17	1,451,763.636	3,223,790.199	40.570700	-104.694435
1,300.00	7.52	223.58	1,297.00	-39.08	-37.19	1,451,754.156	3,223,781.179	40.570674	-104.694468
1,400.00	7.52	223.58	1,396.14	-48.56	-46.21	1,451,744.676	3,223,772.158	40.570648	-104.694501
1,500.00	7.52	223.58	1,495.28	-58.04	-55.23	1,451,735.197	3,223,763.138	40.570623	-104.694534
1,600.00	7.52	223.58	1,594.42	-67.52	-64.25	1,451,725.717	3,223,754.117	40.570597	-104.694566
1,700.00	7.52	223.58	1,693.56	-77.00	-73.27	1,451,716.237	3,223,745.097	40.570571	-104.694599
1,800.00	7.52	223.58	1,792.70	-86.48	-82.29	1,451,706.758	3,223,736.076	40.570545	-104.694632
1,900.00	7.52	223.58	1,891.84	-95.96	-91.31	1,451,697.278	3,223,727.056	40.570520	-104.694665
2,000.00	7.52	223.58	1,990.98	-105.44	-100.33	1,451,687.798	3,223,718.035	40.570494	-104.694697
2,100.00	7.52	223.58	2,090.12	-114.92	-109.36	1,451,678.319	3,223,709.015	40.570468	-104.694730
2,200.00	7.52	223.58	2,189.26	-124.40	-118.38	1,451,668.839	3,223,699.994	40.570442	-104.694763
2,300.00	7.52	223.58	2,288.40	-133.88	-127.40	1,451,659.359	3,223,690.974	40.570416	-104.694796
2,400.00	7.52	223.58	2,387.54	-143.36	-136.42	1,451,649.880	3,223,681.953	40.570391	-104.694829
2,500.00	7.52	223.58	2,486.68	-152.84	-145.44	1,451,640.400	3,223,672.933	40.570365	-104.694861
2,600.00	7.52	223.58	2,585.82	-162.32	-154.46	1,451,630.920	3,223,663.912	40.570339	-104.694894
2,700.00	7.52	223.58	2,684.96	-171.80	-163.48	1,451,621.441	3,223,654.892	40.570313	-104.694927
2,800.00	7.52	223.58	2,784.10	-181.28	-172.50	1,451,611.961	3,223,645.871	40.570287	-104.694960
2,900.00	7.52	223.58	2,883.24	-190.76	-181.52	1,451,602.481	3,223,636.851	40.570262	-104.694992
3,000.00	7.52	223.58	2,982.38	-200.24	-190.54	1,451,593.002	3,223,627.830	40.570236	-104.695025
3,100.00	7.52	223.58	3,081.52	-209.72	-199.56	1,451,583.522	3,223,618.810	40.570210	-104.695058
3,200.00	7.52	223.58	3,180.66	-219.20	-208.58	1,451,574.042	3,223,609.789	40.570184	-104.695091
3,300.00	7.52	223.58	3,279.80	-228.68	-217.60	1,451,564.563	3,223,600.769	40.570158	-104.695124
3,400.00	7.52	223.58	3,378.94	-238.16	-226.62	1,451,555.083	3,223,591.748	40.570133	-104.695156
3,500.00	7.52	223.58	3,478.08	-247.64	-235.64	1,451,545.603	3,223,582.728	40.570107	-104.695189
3,600.00	7.52	223.58	3,577.22	-257.12	-244.66	1,451,536.124	3,223,573.707	40.570081	-104.695222
3,700.00	7.52	223.58	3,676.36	-266.60	-253.68	1,451,526.644	3,223,564.687	40.570055	-104.695255
3,800.00	7.52	223.58	3,775.50	-276.08	-262.70	1,451,517.164	3,223,555.666	40.570029	-104.695287
3,900.00	7.52	223.58	3,874.64	-285.56	-271.72	1,451,507.685	3,223,546.645	40.570004	-104.695320
4,000.00	7.52	223.58	3,973.78	-295.04	-280.74	1,451,498.205	3,223,537.625	40.569978	-104.695353
4,100.00	7.52	223.58	4,072.92	-304.51	-289.77	1,451,488.725	3,223,528.604	40.569952	-104.695386
4,200.00	7.52	223.58	4,172.06	-313.99	-298.79	1,451,479.245	3,223,519.584	40.569926	-104.695419
4,300.00	7.52	223.58	4,271.20	-323.47	-307.81	1,451,469.766	3,223,510.563	40.569900	-104.695451
4,400.00	7.52	223.58	4,370.34	-332.95	-316.83	1,451,460.286	3,223,501.543	40.569875	-104.695484
4,500.00	7.52	223.58	4,469.48	-342.43	-325.85	1,451,450.806	3,223,492.522	40.569849	-104.695517
4,600.00	7.52	223.58	4,568.62	-351.91	-334.87	1,451,441.327	3,223,483.502	40.569823	-104.695550
4,700.00	7.52	223.58	4,667.76	-361.39	-343.89	1,451,431.847	3,223,474.481	40.569797	-104.695582
4,800.00	7.52	223.58	4,766.90	-370.87	-352.91	1,451,422.367	3,223,465.461	40.569771	-104.695615
4,900.00	7.52	223.58	4,866.04	-380.35	-361.93	1,451,412.888	3,223,456.440	40.569746	-104.695648

Database:	EDM 5000.15 Single User Db	Local Co-ordinate Reference:	Well DEHAAN 8X-HNB-16-07-65
Company:	Nickel Road Operating	TVD Reference:	KB @ 4924.00usft
Project:	Sec. 17-T7N-R65W	MD Reference:	KB @ 4924.00usft
Site:	DEHAAN 8X-HNB-16-07-65	North Reference:	Grid
Well:	DEHAAN 8X-HNB-16-07-65	Survey Calculation Method:	Minimum Curvature
Wellbore:	Wellbore #1		
Design:	Design #1		

Planned Survey									
Measured Depth (usft)	Inclination (°)	Azimuth (°)	Vertical Depth (usft)	+N/-S (usft)	+E/-W (usft)	Map Northing (usft)	Map Easting (usft)	Latitude	Longitude
5,000.00	7.52	223.58	4,965.18	-389.83	-370.95	1,451,403.408	3,223,447.420	40.569720	-104.695681
5,100.00	7.52	223.58	5,064.32	-399.31	-379.97	1,451,393.928	3,223,438.399	40.569694	-104.695714
5,200.00	7.52	223.58	5,163.46	-408.79	-388.99	1,451,384.449	3,223,429.379	40.569668	-104.695746
5,300.00	7.52	223.58	5,262.60	-418.27	-398.01	1,451,374.969	3,223,420.358	40.569642	-104.695779
5,400.00	7.52	223.58	5,361.74	-427.75	-407.03	1,451,365.489	3,223,411.338	40.569617	-104.695812
5,500.00	7.52	223.58	5,460.88	-437.23	-416.05	1,451,356.010	3,223,402.317	40.569591	-104.695845
5,600.00	7.52	223.58	5,560.02	-446.71	-425.07	1,451,346.530	3,223,393.297	40.569565	-104.695877
5,700.00	7.52	223.58	5,659.16	-456.19	-434.09	1,451,337.050	3,223,384.276	40.569539	-104.695910
5,800.00	7.52	223.58	5,758.30	-465.67	-443.11	1,451,327.571	3,223,375.256	40.569514	-104.695943
5,900.00	7.52	223.58	5,857.44	-475.15	-452.13	1,451,318.091	3,223,366.235	40.569488	-104.695976
6,000.00	7.52	223.58	5,956.58	-484.63	-461.16	1,451,308.611	3,223,357.215	40.569462	-104.696009
6,100.00	7.52	223.58	6,055.72	-494.11	-470.18	1,451,299.132	3,223,348.194	40.569436	-104.696041
6,200.00	7.52	223.58	6,154.86	-503.59	-479.20	1,451,289.652	3,223,339.174	40.569410	-104.696074
6,300.00	7.52	223.58	6,254.00	-513.07	-488.22	1,451,280.172	3,223,330.153	40.569385	-104.696107
6,400.00	7.52	223.58	6,353.14	-522.55	-497.24	1,451,270.693	3,223,321.133	40.569359	-104.696140
6,481.77	7.52	223.58	6,434.21	-530.30	-504.61	1,451,262.941	3,223,313.756	40.569338	-104.696166
KOP 8°/100									
6,500.00	6.63	214.17	6,452.30	-532.03	-506.03	1,451,261.207	3,223,312.343	40.569333	-104.696172
6,600.00	7.09	142.77	6,551.75	-541.74	-505.54	1,451,251.503	3,223,312.834	40.569306	-104.696170
6,700.00	13.57	114.98	6,650.13	-551.62	-491.15	1,451,241.620	3,223,327.224	40.569279	-104.696119
6,800.00	21.11	105.79	6,745.53	-561.49	-463.14	1,451,231.750	3,223,355.231	40.569251	-104.696018
6,900.00	28.89	101.34	6,836.10	-571.15	-422.06	1,451,222.085	3,223,396.311	40.569223	-104.695871
7,000.00	36.76	98.66	6,920.07	-580.43	-368.70	1,451,212.813	3,223,449.665	40.569197	-104.695679
7,100.00	44.67	96.82	6,995.81	-589.13	-304.12	1,451,204.115	3,223,514.254	40.569171	-104.695447
7,200.00	52.60	95.44	7,061.84	-597.08	-229.55	1,451,196.159	3,223,588.821	40.569147	-104.695179
7,300.00	60.55	94.32	7,116.88	-604.14	-146.46	1,451,189.101	3,223,671.914	40.569126	-104.694880
7,350.08	64.53	93.83	7,139.98	-607.29	-102.14	1,451,185.947	3,223,716.232	40.569116	-104.694720
LPL 8X-HNB-16-07-65 493 FSL 460 FWL									
7,400.00	68.50	93.37	7,159.86	-610.16	-56.45	1,451,183.078	3,223,761.916	40.569107	-104.694556
7,500.00	76.46	92.51	7,189.94	-615.03	38.71	1,451,178.207	3,223,857.075	40.569092	-104.694214
7,600.00	84.42	91.71	7,206.53	-618.66	137.17	1,451,174.583	3,223,955.540	40.569079	-104.693859
7,674.33	90.34	91.13	7,209.93	-620.50	211.37	1,451,172.740	3,224,029.740	40.569072	-104.693592
LP 90.34 Inc, 91.13 Az									
7,700.00	90.34	91.13	7,209.78	-621.01	237.03	1,451,172.232	3,224,055.401	40.569070	-104.693500
7,800.00	90.34	91.13	7,209.18	-622.99	337.01	1,451,170.253	3,224,155.379	40.569062	-104.693140
7,900.00	90.34	91.13	7,208.59	-624.97	436.99	1,451,168.273	3,224,255.358	40.569054	-104.692780
8,000.00	90.34	91.13	7,208.00	-626.95	536.97	1,451,166.294	3,224,355.336	40.569046	-104.692421
8,100.00	90.34	91.13	7,207.40	-628.93	636.95	1,451,164.315	3,224,455.315	40.569038	-104.692061
8,200.00	90.34	91.13	7,206.81	-630.90	736.92	1,451,162.335	3,224,555.294	40.569031	-104.691701
8,300.00	90.34	91.13	7,206.22	-632.88	836.90	1,451,160.356	3,224,655.272	40.569023	-104.691341
8,400.00	90.34	91.13	7,205.62	-634.86	936.88	1,451,158.376	3,224,755.251	40.569015	-104.690981
8,500.00	90.34	91.13	7,205.03	-636.84	1,036.86	1,451,156.397	3,224,855.230	40.569007	-104.690622
8,600.00	90.34	91.13	7,204.44	-638.82	1,136.84	1,451,154.418	3,224,955.208	40.568999	-104.690262
8,700.00	90.34	91.13	7,203.84	-640.80	1,236.82	1,451,152.438	3,225,055.187	40.568991	-104.689902
8,800.00	90.34	91.13	7,203.25	-642.78	1,336.80	1,451,150.459	3,225,155.166	40.568983	-104.689542
8,900.00	90.34	91.13	7,202.66	-644.76	1,436.77	1,451,148.479	3,225,255.144	40.568975	-104.689182
9,000.00	90.34	91.13	7,202.06	-646.74	1,536.75	1,451,146.500	3,225,355.123	40.568967	-104.688823
9,100.00	90.34	91.13	7,201.47	-648.72	1,636.73	1,451,144.521	3,225,455.102	40.568959	-104.688463
9,200.00	90.34	91.13	7,200.88	-650.70	1,736.71	1,451,142.541	3,225,555.080	40.568951	-104.688103
9,300.00	90.34	91.13	7,200.28	-652.68	1,836.69	1,451,140.562	3,225,655.059	40.568943	-104.687743
9,400.00	90.34	91.13	7,199.69	-654.66	1,936.67	1,451,138.583	3,225,755.037	40.568935	-104.687383
9,500.00	90.34	91.13	7,199.10	-656.64	2,036.65	1,451,136.603	3,225,855.016	40.568927	-104.687024
9,600.00	90.34	91.13	7,198.50	-658.62	2,136.62	1,451,134.624	3,225,954.995	40.568919	-104.686664
9,700.00	90.34	91.13	7,197.91	-660.60	2,236.60	1,451,132.644	3,226,054.973	40.568911	-104.686304

Database:	EDM 5000.15 Single User Db	Local Co-ordinate Reference:	Well DEHAAN 8X-HNB-16-07-65
Company:	Nickel Road Operating	TVD Reference:	KB @ 4924.00usft
Project:	Sec. 17-T7N-R65W	MD Reference:	KB @ 4924.00usft
Site:	DEHAAN 8X-HNB-16-07-65	North Reference:	Grid
Well:	DEHAAN 8X-HNB-16-07-65	Survey Calculation Method:	Minimum Curvature
Wellbore:	Wellbore #1		
Design:	Design #1		

Planned Survey										
Measured Depth (usft)	Inclination (°)	Azimuth (°)	Vertical Depth (usft)	+N/-S (usft)	+E/-W (usft)	Map Northing (usft)	Map Easting (usft)	Latitude	Longitude	
9,800.00	90.34	91.13	7,197.32	-662.58	2,336.58	1,451,130.665	3,226,154.952	40.568903	-104.685944	
9,900.00	90.34	91.13	7,196.72	-664.55	2,436.56	1,451,128.686	3,226,254.931	40.568895	-104.685585	
10,000.00	90.34	91.13	7,196.13	-666.53	2,536.54	1,451,126.706	3,226,354.909	40.568888	-104.685225	
10,100.00	90.34	91.13	7,195.54	-668.51	2,636.52	1,451,124.727	3,226,454.888	40.568880	-104.684865	
10,200.00	90.34	91.13	7,194.94	-670.49	2,736.50	1,451,122.748	3,226,554.867	40.568872	-104.684505	
10,300.00	90.34	91.13	7,194.35	-672.47	2,836.48	1,451,120.768	3,226,654.845	40.568864	-104.684145	
10,400.00	90.34	91.13	7,193.76	-674.45	2,936.45	1,451,118.789	3,226,754.824	40.568856	-104.683786	
10,500.00	90.34	91.13	7,193.16	-676.43	3,036.43	1,451,116.809	3,226,854.802	40.568848	-104.683426	
10,600.00	90.34	91.13	7,192.57	-678.41	3,136.41	1,451,114.830	3,226,954.781	40.568840	-104.683066	
10,700.00	90.34	91.13	7,191.98	-680.39	3,236.39	1,451,112.851	3,227,054.760	40.568832	-104.682706	
10,800.00	90.34	91.13	7,191.38	-682.37	3,336.37	1,451,110.871	3,227,154.738	40.568824	-104.682346	
10,900.00	90.34	91.13	7,190.79	-684.35	3,436.35	1,451,108.892	3,227,254.717	40.568816	-104.681987	
11,000.00	90.34	91.13	7,190.20	-686.33	3,536.33	1,451,106.913	3,227,354.696	40.568808	-104.681627	
11,100.00	90.34	91.13	7,189.60	-688.31	3,636.30	1,451,104.933	3,227,454.674	40.568800	-104.681267	
11,200.00	90.34	91.13	7,189.01	-690.29	3,736.28	1,451,102.954	3,227,554.653	40.568792	-104.680907	
11,300.00	90.34	91.13	7,188.42	-692.27	3,836.26	1,451,100.974	3,227,654.632	40.568784	-104.680547	
11,400.00	90.34	91.13	7,187.82	-694.25	3,936.24	1,451,098.995	3,227,754.610	40.568776	-104.680188	
11,500.00	90.34	91.13	7,187.23	-696.22	4,036.22	1,451,097.016	3,227,854.589	40.568768	-104.679828	
11,600.00	90.34	91.13	7,186.63	-698.20	4,136.20	1,451,095.036	3,227,954.568	40.568760	-104.679468	
11,700.00	90.34	91.13	7,186.04	-700.18	4,236.18	1,451,093.057	3,228,054.546	40.568752	-104.679108	
11,800.00	90.34	91.13	7,185.45	-702.16	4,336.16	1,451,091.077	3,228,154.525	40.568744	-104.678748	
11,900.00	90.34	91.13	7,184.85	-704.14	4,436.13	1,451,089.098	3,228,254.503	40.568736	-104.678389	
12,000.00	90.34	91.13	7,184.26	-706.12	4,536.11	1,451,087.119	3,228,354.482	40.568728	-104.678029	
12,100.00	90.34	91.13	7,183.67	-708.10	4,636.09	1,451,085.139	3,228,454.461	40.568720	-104.677669	
12,143.59	90.34	91.13	7,183.41	-708.96	4,679.68	1,451,084.276	3,228,498.045	40.568717	-104.677512	
TD at 12143.59 - BHL 8X-HNB-16-07-65 499 FSL 0 FEL										

Design Targets										
Target Name	Dip Angle (°)	Dip Dir. (°)	TVD (usft)	+N/-S (usft)	+E/-W (usft)	Northing (usft)	Easting (usft)	Latitude	Longitude	
SHL 8X-HNB-16-07-65 1 - plan hits target center - Point	0.00	0.00	0.00	0.00	0.00	1,451,793.240	3,223,818.370	40.570781	-104.694333	
BHL 8X-HNB-16-07-65 4 - plan misses target center by 0.15usft at 12143.59usft MD (7183.41 TVD, -708.96 N, 4679.68 E) - Point	0.00	0.00	7,183.50	-708.84	4,679.68	1,451,084.398	3,228,498.048	40.568717	-104.677512	
LPL 8X-HNB-16-07-65 4 - plan misses target center by 77.95usft at 7350.08usft MD (7139.98 TVD, -607.29 N, -102.14 E) - Point	0.00	0.00	7,209.93	-613.50	-135.96	1,451,179.738	3,223,682.412	40.569100	-104.694842	

Plan Annotations					
Measured Depth (usft)	Vertical Depth (usft)	Local Coordinates		Comment	
		+N/-S (usft)	+E/-W (usft)		
700.00	700.00	0.00	0.00	Start Build 2.00	
1,075.95	1,074.88	-17.85	-16.98	Hold 7.52 Inc, 223.58 Az	
6,481.77	6,434.21	-530.30	-504.61	KOP 8°/100	
7,674.33	7,209.93	-620.50	211.37	LP 90.34 Inc, 91.13 Az	
12,143.59	7,183.41	-708.96	4,679.68	TD at 12143.59	