

Investment Equipment LLC, Kincheloe 1  
121-09205

Inspection #688309575

1/21/2021

Spill Inspection



Colorado Oil and Gas Conservation Commission  
39.80111, -103.06103, 4550.5ft, 141°  
01/21/2021 03:45:38 PM





Colorado Oil and Gas Conservation Commission  
39.80115, -103.06097, 4550.5ft, 137°  
01/21/2021 03:45:45 PM



Check tank  
valves.

Colorado Oil and Gas Conservation Commission  
39.8013, -103.06082, 4550.5ft, 179°  
01/21/2021 03:46:06 PM



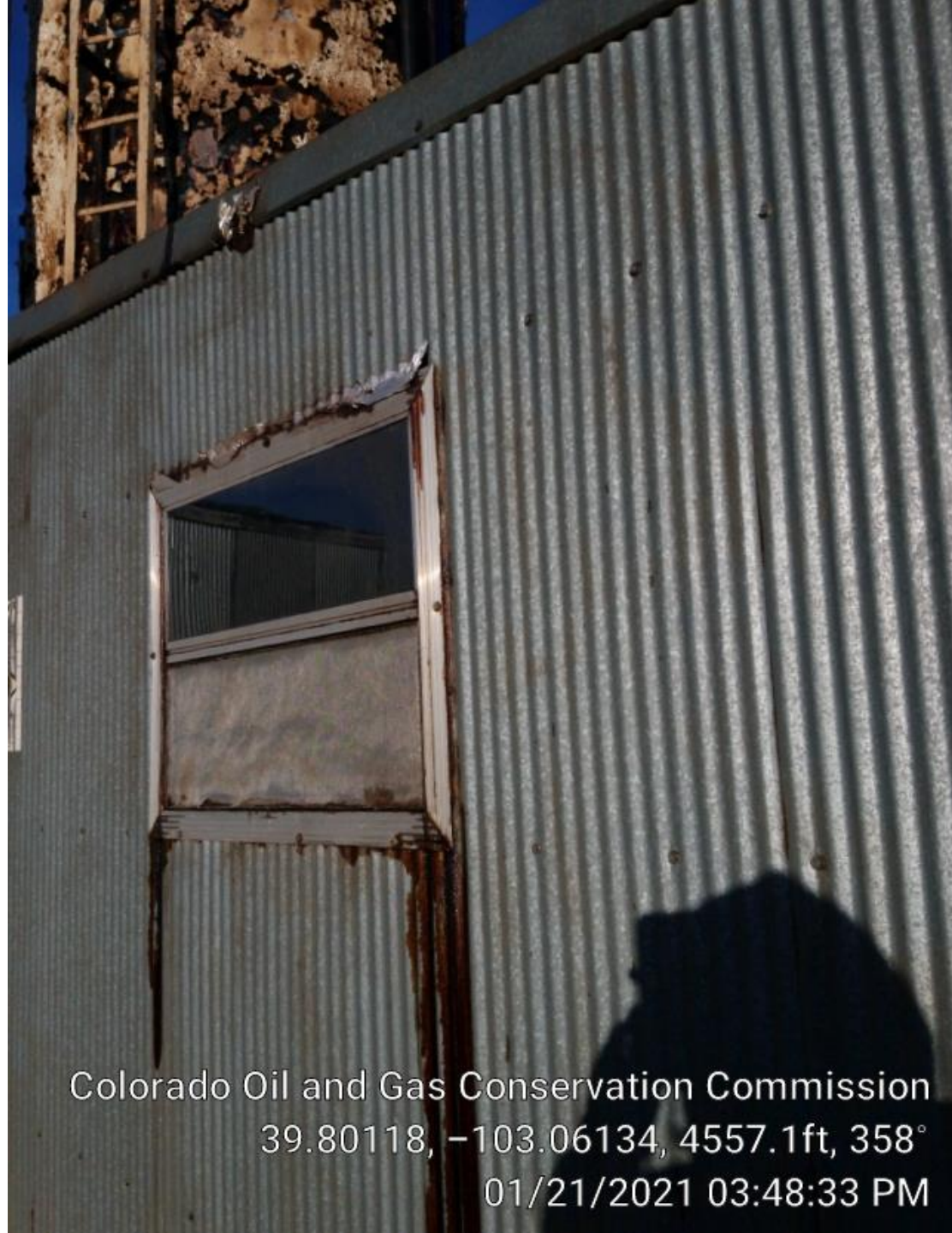


Colorado Oil and Gas Conservation Commission  
39.80096, -103.0613, 4557.1ft, 350°  
01/21/2021 03:46:56 PM



Colorado Oil and Gas Conservation Commission  
39.80117, -103.06128, 4563.6ft, 290°  
01/21/2021 03:47:44 PM





Colorado Oil and Gas Conservation Commission  
39.80118, -103.06134, 4557.1ft, 358°  
01/21/2021 03:48:33 PM

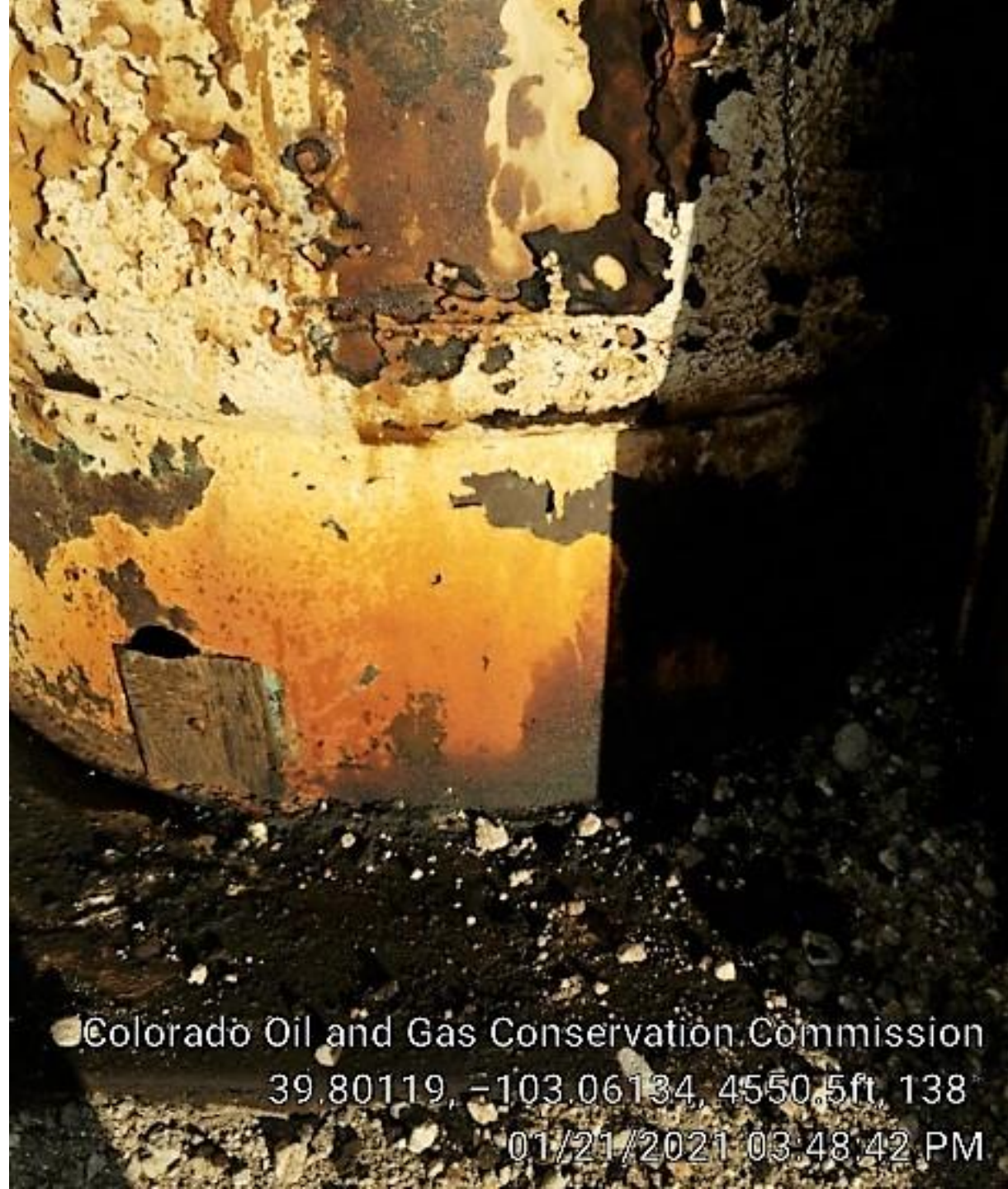


• Colorado Oil and Gas Conservation Commission  
39.80116, -103.06131, 4560.4ft, 328°  
01/21/2021 03:47:54 PM





Colorado Oil and Gas Conservation Commission  
39.80118, -103.06132, 4560.4ft, 51°  
01/21/2021 03:48:27 PM



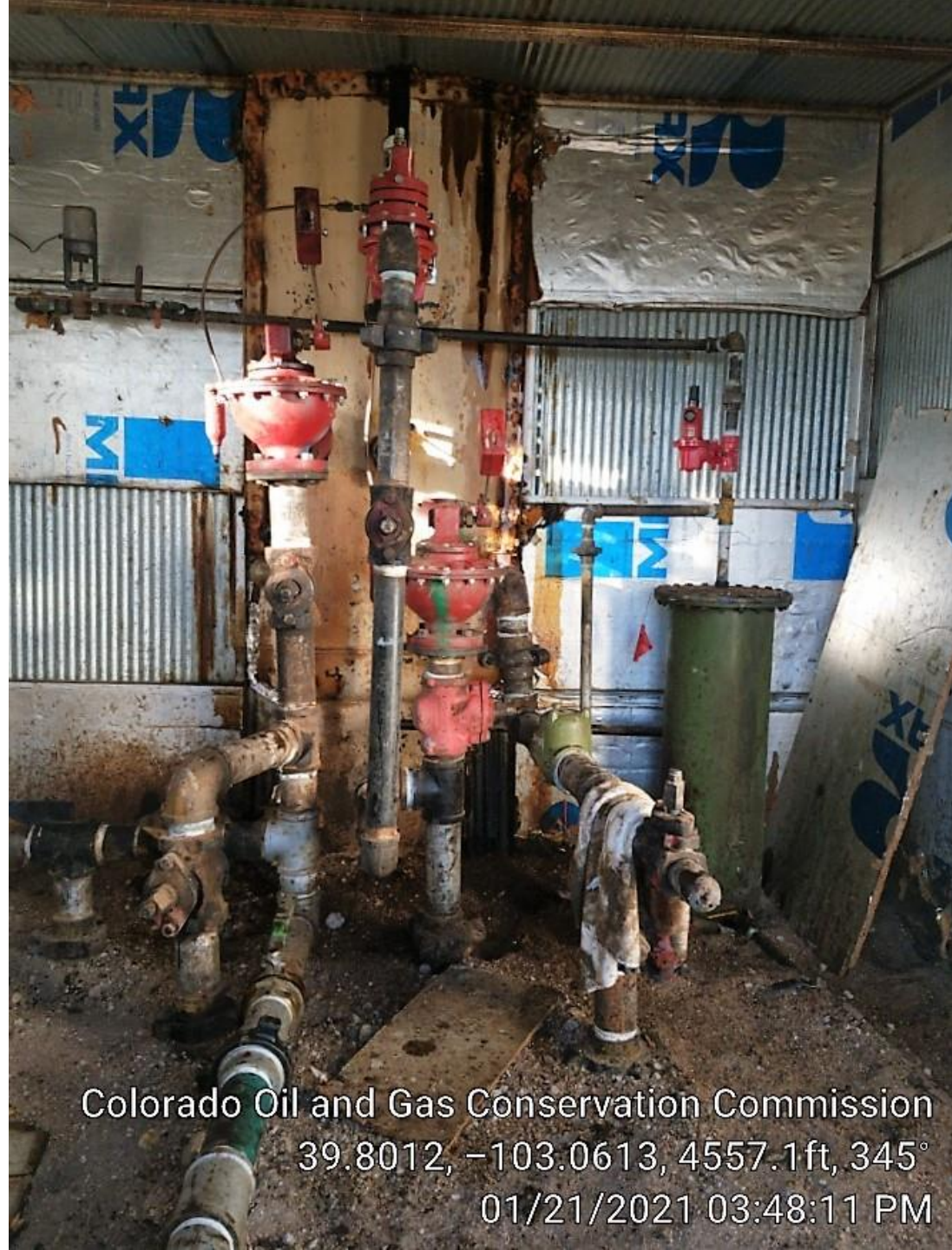
Colorado Oil and Gas Conservation Commission  
39.80119, -103.06134, 4550.5ft, 138  
01/21/2021 03:48:42 PM





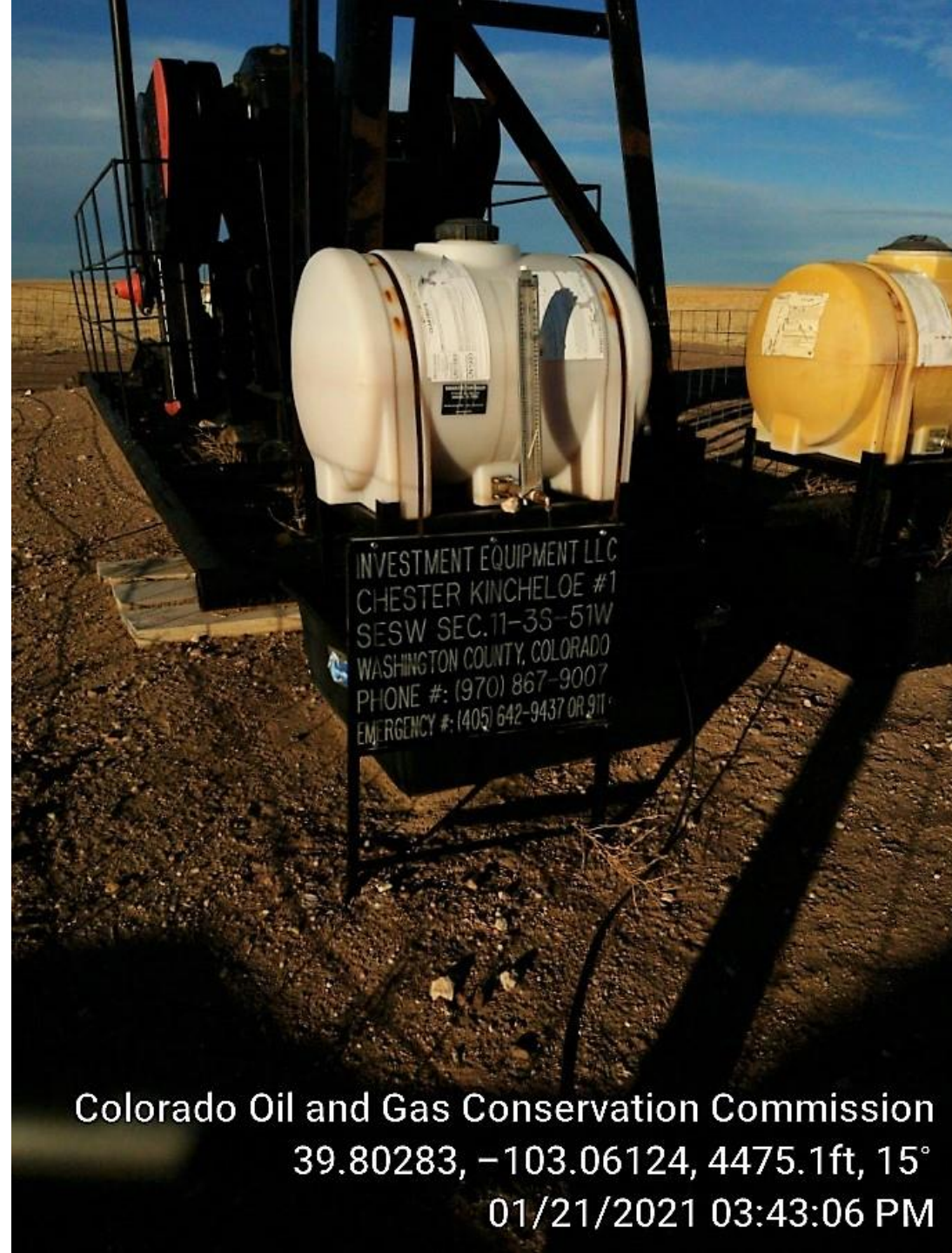
Colorado Oil and Gas Conservation Commission  
39.8012, -103.06134, 4550.5ft, 151°  
01/21/2021 03:48:46 PM



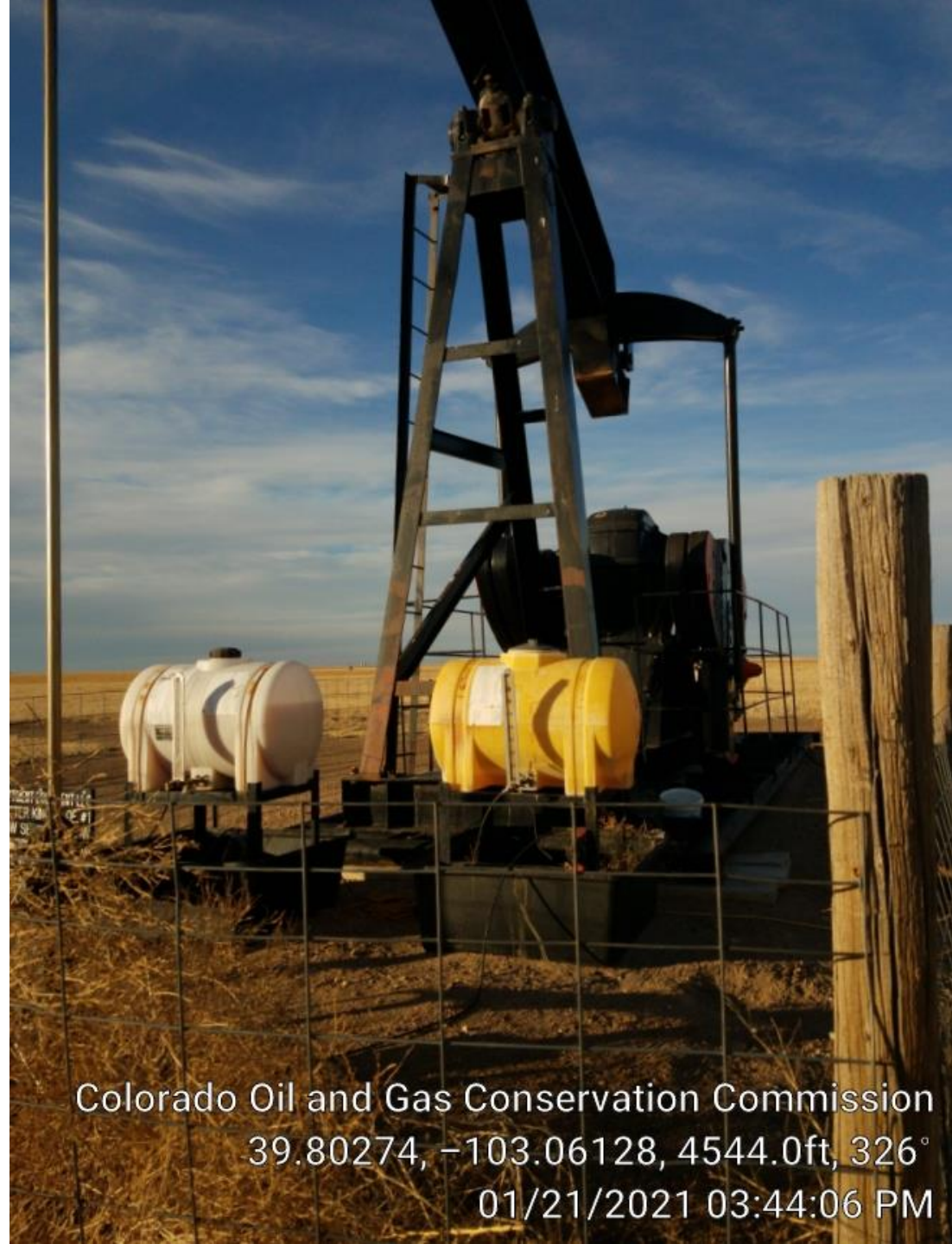


Colorado Oil and Gas Conservation Commission  
39.8012, -103.0613, 4557.1ft, 345°  
01/21/2021 03:48:11 PM





Colorado Oil and Gas Conservation Commission  
39.80283, -103.06124, 4475.1ft, 15°  
01/21/2021 03:43:06 PM



Colorado Oil and Gas Conservation Commission  
39.80274, -103.06128, 4544.0ft, 326°  
01/21/2021 03:44:06 PM





Crop field  
east of  
wellhead  
where  
previous  
spill  
occurred.

Colorado Oil and Gas Conservation Commission  
39.80291, -103.06112, 4547.2ft, 90°  
01/21/2021 03:43:42 PM





Crop field  
north of  
tanks  
where  
previous  
spill  
occurred

Colorado Oil and Gas Conservation Commission  
39.8015, -103.06125, 4553.8ft, 85°  
01/21/2021 03:45:07 PM





Closed pit.

Colorado Oil and Gas Conservation Commission  
39.80108, -103.0612, 4530.8ft, 278°  
01/21/2021 03:46:38 PM





Closed  
pit.

Colorado Oil and Gas Conservation Commission  
39.80147, -103.06128, 4560.4ft, 233°  
01/21/2021 03:45:13 PM