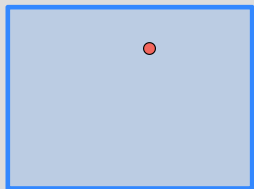
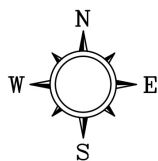


Leaflet | Powered by Esri | U.S. Department of the Interior | U.S. Geological Survey | Policies



Latitude: 40.099394
Longitude: -104.983999



Crestone Peak Resources
Billings

**FIGURE 1
SITE LOCATION MAP**

40.099394, -104.983999
Frederick, Colorado

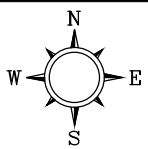
PROJECT BILLINGS
NUMBER

APPROVED BY

CHECKED BY

DRAWN BY
JCD 2/19/2020

FILENAME
BILLINGS_1903_2.DWG



LEGEND

- TMW-1/⊕
B-1 APPROXIMATE TEMPORARY
MONITORING WELL LOCATION
- B-5 ● SOIL SAMPLE LOCATION
- BERM
- FENCE

NOTES

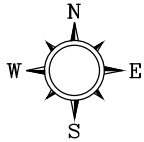
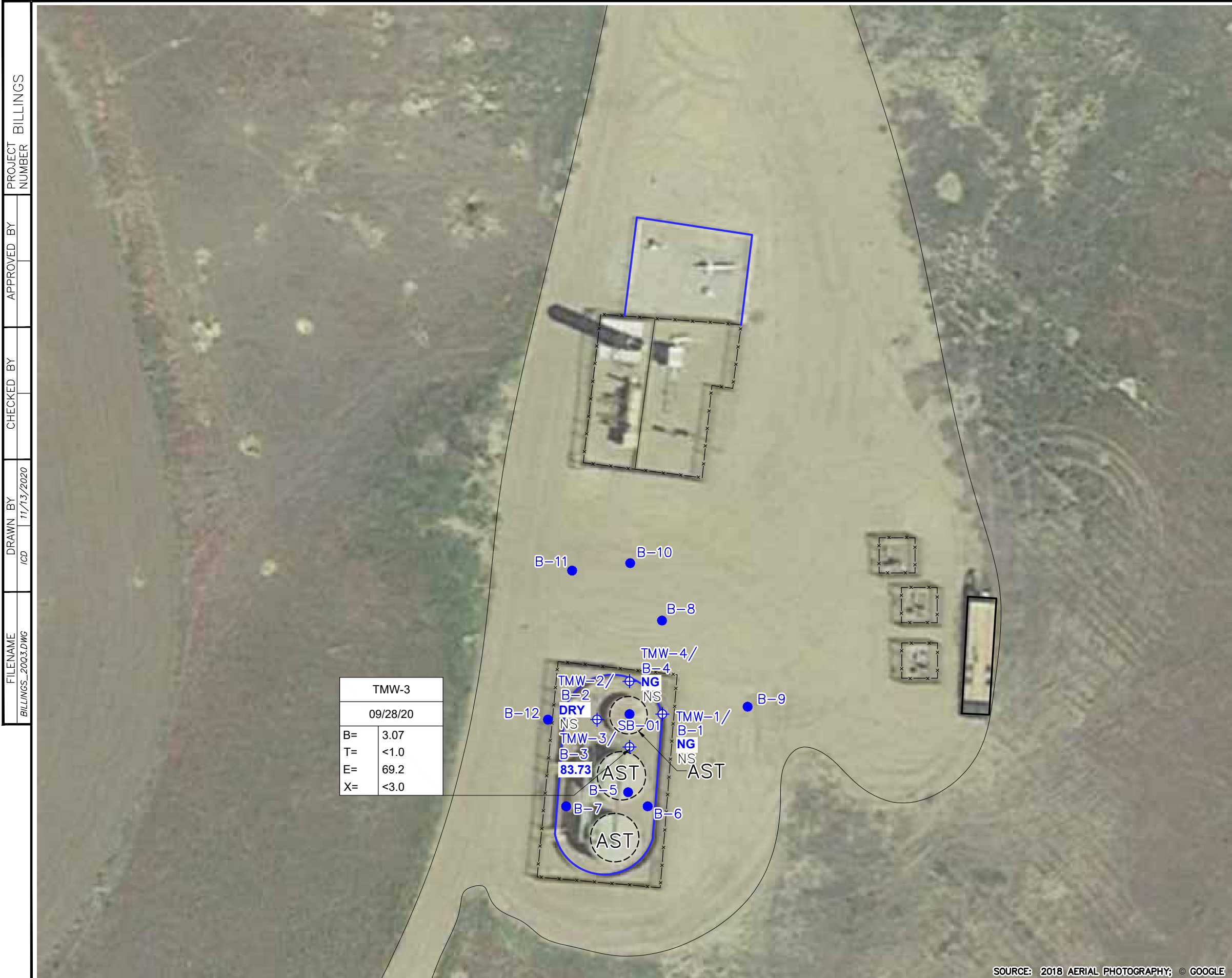
- LOCATIONS ARE APPROXIMATE
- COORDINATE SYSTEM: WGS 1984
PROJECTION: TRANSVERSE MERCATOR

0 15 30
SCALE IN FEET



FIGURE 2
SITE MAP

BILLINGS
40.099394, -104.983999
WELD COUNTY, COLORADO



LEGEND

- TMW-1/⊕ APPROXIMATE TEMPORARY MONITORING WELL LOCATION
- B-1
- B-5 ● SOIL SAMPLE LOCATION
- BERM
- x-x-x-x-x-x- FENCE
- 83.73 GROUNDWATER ELEVATION (FEET)
- NG NOT GAUGED
- DRY WELL IS DRY
- NOT ENOUGH DATA TO CONSTRUCT GROUNDWATER CONTOURS
- B BENZENE (μg/L)
- T TOLUENE (μg/L)
- E ETHYLBENZENE (μg/L)
- X TOTAL XYLENES (μg/L)
- μg/L MICROGRAMS PER LITER
- < NOT DETECTED ABOVE LIMIT NOTED
- NS NOT SAMPLED

NOTES

- LOCATIONS ARE APPROXIMATE
- COORDINATE SYSTEM: WGS 1984
PROJECTION: TRANSVERSE MERCATOR



FIGURE 3

GROUNDWATER MONITORING MAP
09/28/2020

BILLINGS
40.099394, -104.983999
WELD COUNTY, COLORADO

SOURCE: 2018 AERIAL PHOTOGRAPHY; © GOOGLE