

D90 Energy LLC, John Craig 6-2
073-6477

Inspection #688309447

1/12/2021

Spill Inspection at Tank Battery

90 ENERGY LLC
John Craig 1-2
NENE Sec 2, T 10S, R 56W 6 PM
1222' FNL 665' FEL
Lincoln County, Colorado
API 05-073-06549-00
Emergency Phone
303-638-6096 or 911

JOHN CRAIG 7-2 S.W.D.
400 BBL CAPACITY
PRODUCED WATER
CRUDE OIL

EMERGENCY CALL 303-638-6096
OR
911

Colorado Oil and Gas Conservation Commission
39.20888, -103.63134, 5232.9ft, 160°
01/12/2021 02:01:30 PM

D90 ENERGY LLC

John Craig 7-2
SW NE Sec 2, T10S, R56W
1,980' FNL 1,980' FEL
Lincoln County, Colorado
API 05-073-06413

Emergency Phone
303-638-6096 or 911

D90 ENERGY LLC

JOHN CRAIG 6-2
SENE Sec 2, T 10S, R 56W
2038' FNL 2267' FWL
Lincoln County, Colorado
API 05-073-06477-00

Emergency Phone
303-638-6096 or 911

Colorado Oil and Gas Conservation Commission
39.20888, -103.63134, 5232.9ft, 273°
01/12/2021 02:01:40 PM

LC

W 6 PM
Surface
olorado
563-00
hone
6 or 911

D90 ENERGY LLC

John Craig 1-2

NENE Sec 2, T 10S, R 56W 6 PM

1222' FNL 665' FEL

Lincoln County, Colorado

API 05-073-06549-00

Emergency Phone
303-638-6096 or 911

D90 ENERGY

John Craig 7-2

SW NE Sec 2, T10S, R

1,980' FNL 1,980' FL

Lincoln County, Colora

API 05-073-06413

Emergency Phone

Colorado Oil and Gas Conservation Commission

39.20889, -103.63135, 5229.7ft, 260°

01/12/2021 02:01:45 PM

D90 ENERGY LLC

John Craig 10-10

NWSE Sec 10, T10S, R56W 6 PM

1985' FSL 2147' FEL

Lincoln County, Colorado

API 05-073-06567

Emergency Phone
303-638-6096 or 911

D90 ENERGY

John Craig 2-2

Lot 2 NE 1/4 Sec 2, T 10S, R56W

837' FNL 1842' FEL Surface

Lincoln County, Colorado

API 05-073-06563-00

Emergency Phone
303-638-6096 or 911

Colorado Oil and Gas Conservation Commission
39.20887, -103.63135, 5226.4ft, 254°

01/12/2021 02:01:50 PM

D90 ENERGY LLC

John Craig 4-2

SW NW Sec 2, T 10S, R 56W 6 PM

1303' FNL 1124' FWL Surface

Lincoln County, Colorado

API 05-073-06568-00

Emergency Phone
303-638-6096

D90 ENERGY LLC

John Craig 10-10

NWSE Sec 10, T10S, R56W 6 PM

1985' FSL 2147' FEL

Lincoln County, Colorado

API 05-073-06568-00

Emergency Phone
303-638-6096

Colorado Oil and Gas Conservation Commission
39.20887, -103.63133, 5226.4ft, 247°

01/12/2021 02:01:53 PM



Colorado Oil and Gas Conservation Commission
39.20962, -103.63207, 5216.5ft, 154°
01/12/2021 02:10:13 PM



Colorado Oil and Gas Conservation Commission
39.20884, -103.63135, 5242.8ft, 201°
01/12/2021 02:02:11 PM



Colorado Oil and Gas Conservation Commission

39.20888, -103.63164, 5236.2ft, 126°

01/12/2021 02:07:28 PM



Two of the four produced water tanks have leaked. This tank is on the west side and the second one from the north.

Colorado Oil and Gas Conservation Commission
39.20884, -103.63138, 5242.8ft, 249°
01/12/2021 02:03:16 PM



Oil staining on crude oil tanks that are south of the leaking produced water tanks.

Colorado Oil and Gas Conservation Commission
39.20884, -103.63142, 5239.5ft, 237°
01/12/2021 02:03:26 PM



This is the second produced water tank that looks like it overtopped. It is the northern tank on the west side of the tank battery.

Colorado Oil and Gas Conservation Commission
39.20883, -103.63149, 5223.1ft, 62°
01/12/2021 02:03:59 PM

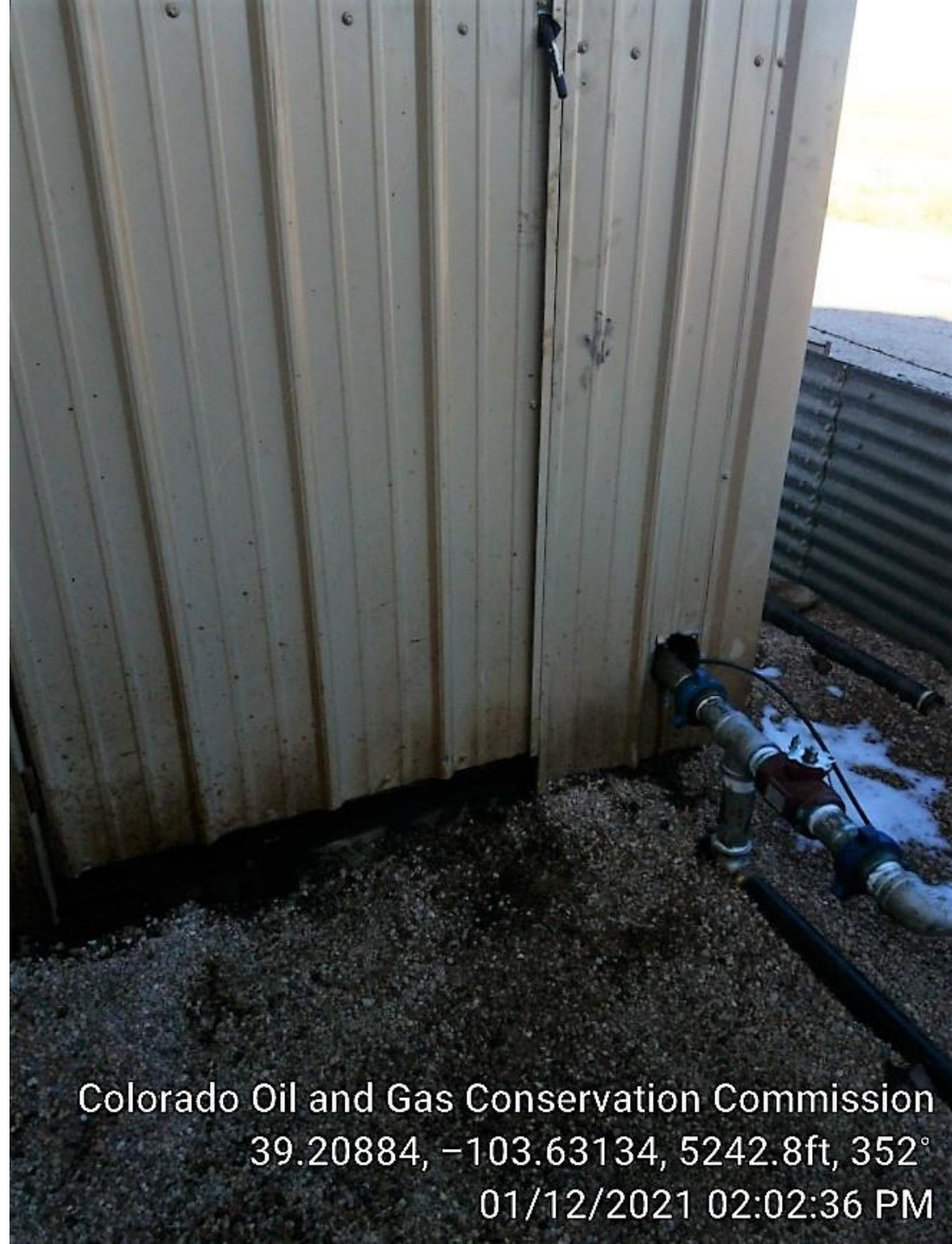


Triplex pump shed in
tank battery
containment that is
leaking oil from the
inside out (see the
next slides).

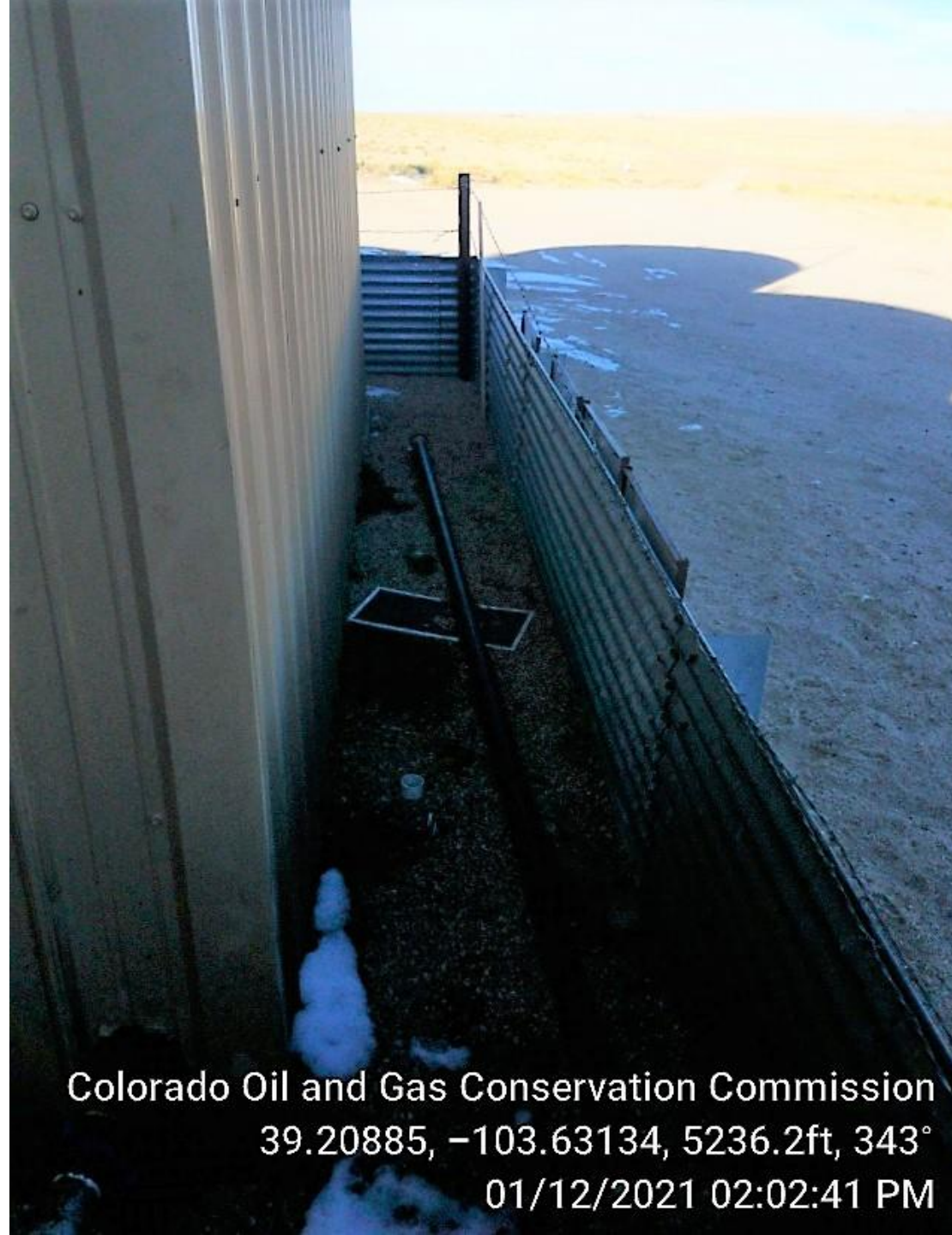
Colorado Oil and Gas Conservation Commission
39.20884, -103.63133, 5246.1ft, 299°
01/12/2021 02:02:19 PM



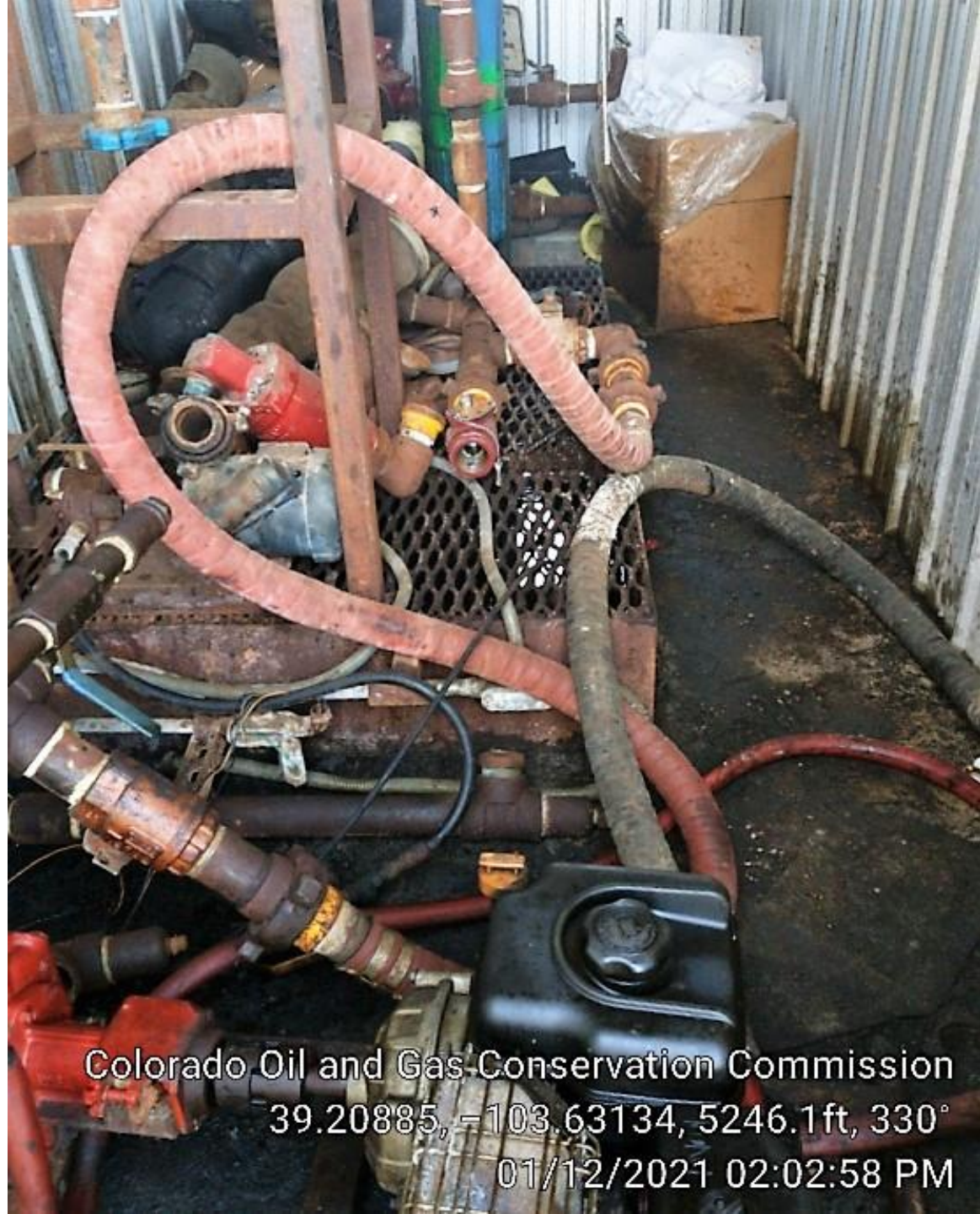
Colorado Oil and Gas Conservation Commission
39.20884, -103.63134, 5239.5ft, 344°
01/12/2021 02:02:33 PM



Colorado Oil and Gas Conservation Commission
39.20884, -103.63134, 5242.8ft, 352°
01/12/2021 02:02:36 PM



Colorado Oil and Gas Conservation Commission
39.20885, -103.63134, 5236.2ft, 343°
01/12/2021 02:02:41 PM



Colorado Oil and Gas Conservation Commission
39.20885, -103.63134, 5246.1ft, 330°
01/12/2021 02:02:58 PM



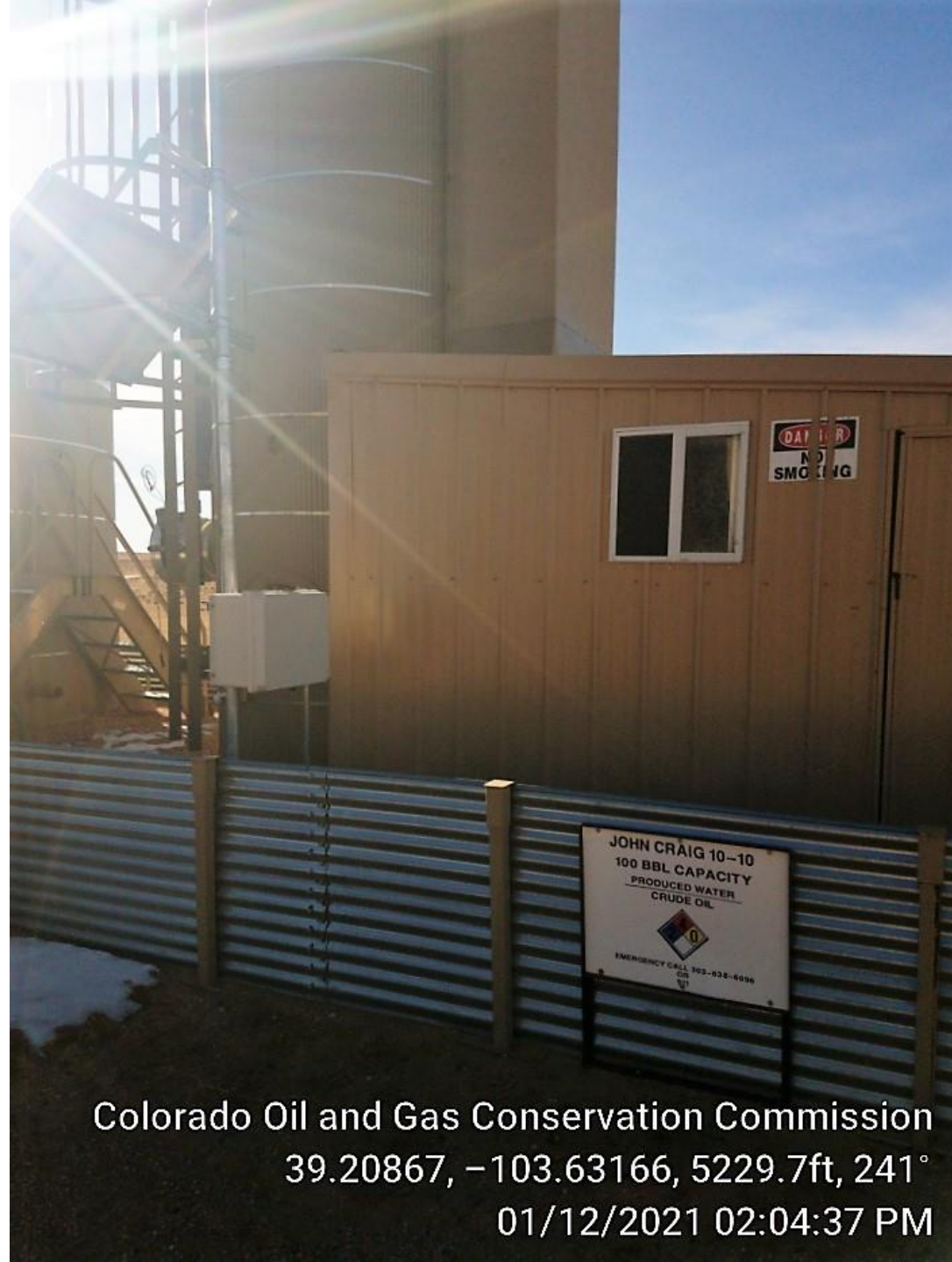
Colorado Oil and Gas Conservation Commission
39.20861, -103.63166, 5236.2ft, 256°
01/12/2021 02:04:47 PM



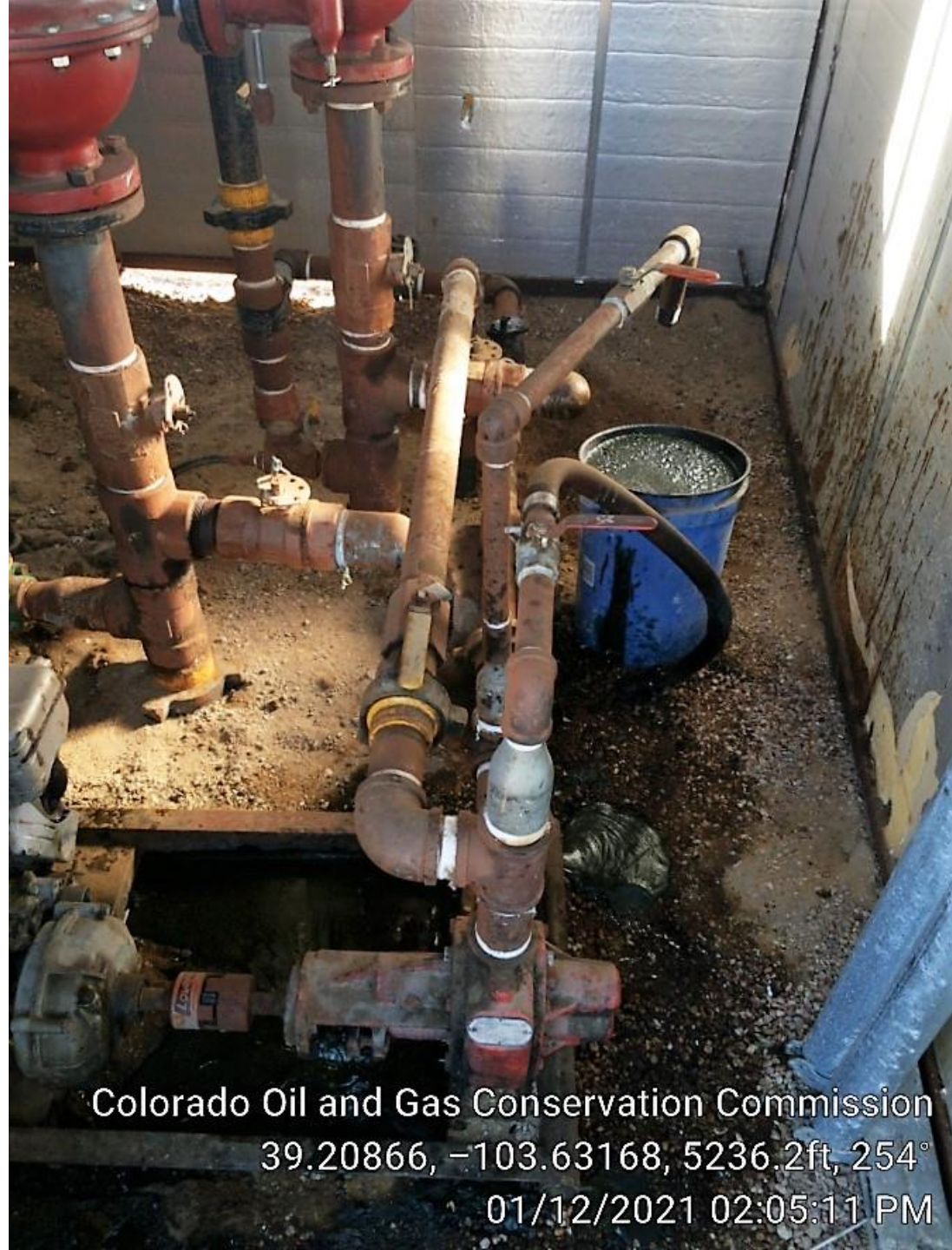
Colorado Oil and Gas Conservation Commission

39.20886, -103.6315, 5219.8ft, 258°

01/12/2021 02:04:04 PM



Colorado Oil and Gas Conservation Commission
39.20867, -103.63166, 5229.7ft, 241°
01/12/2021 02:04:37 PM



Stained soil inside the
10-10 treater shed.

Colorado Oil and Gas Conservation Commission
39.20866, -103.63168, 5236.2ft, 254°
01/12/2021 02:05:11 PM

JOHN CRAIG 4-2

100 BBL CAPACITY

PRODUCED WATER
CRUDE OIL

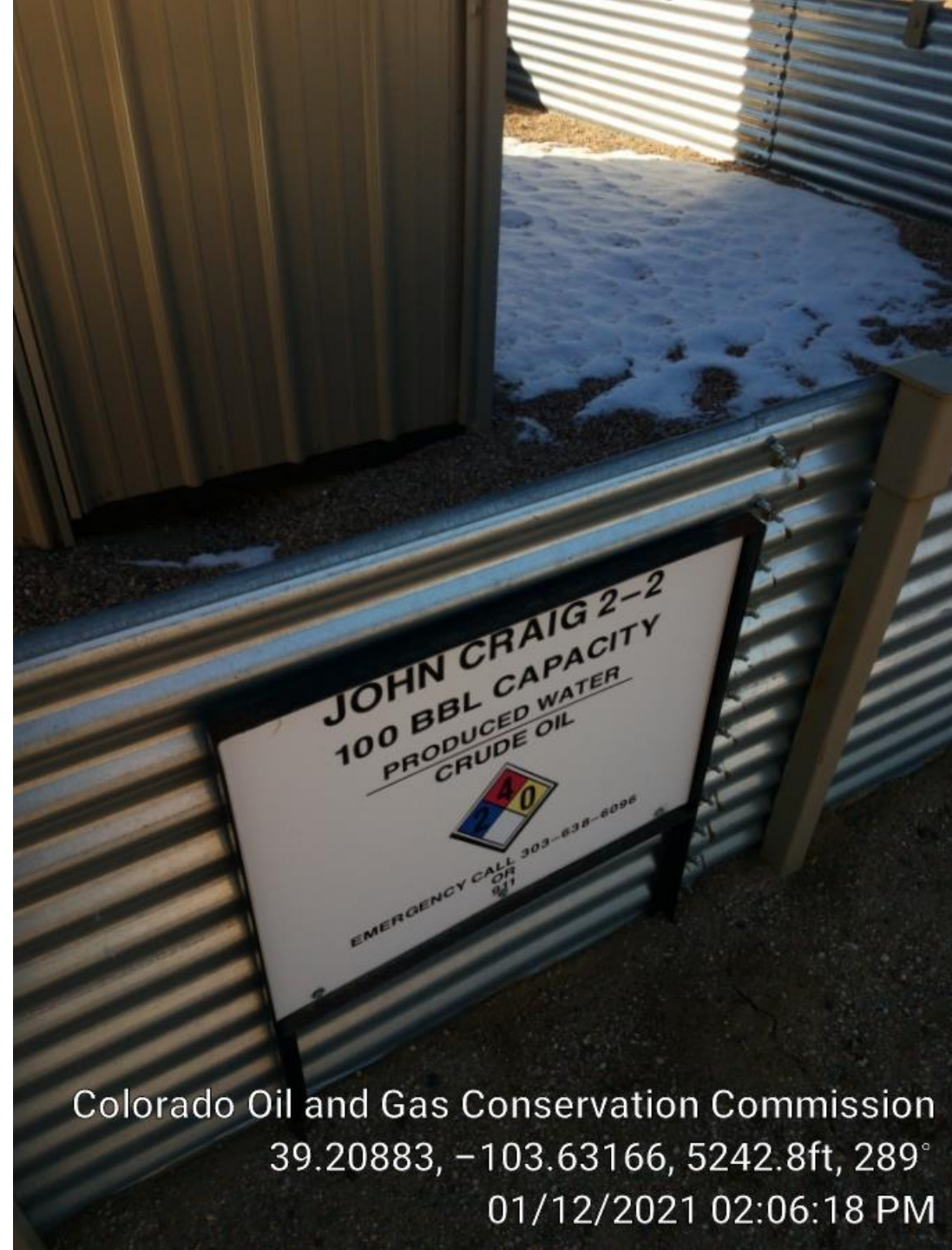


EMERGENCY CALL 303-638-6096
OR
911

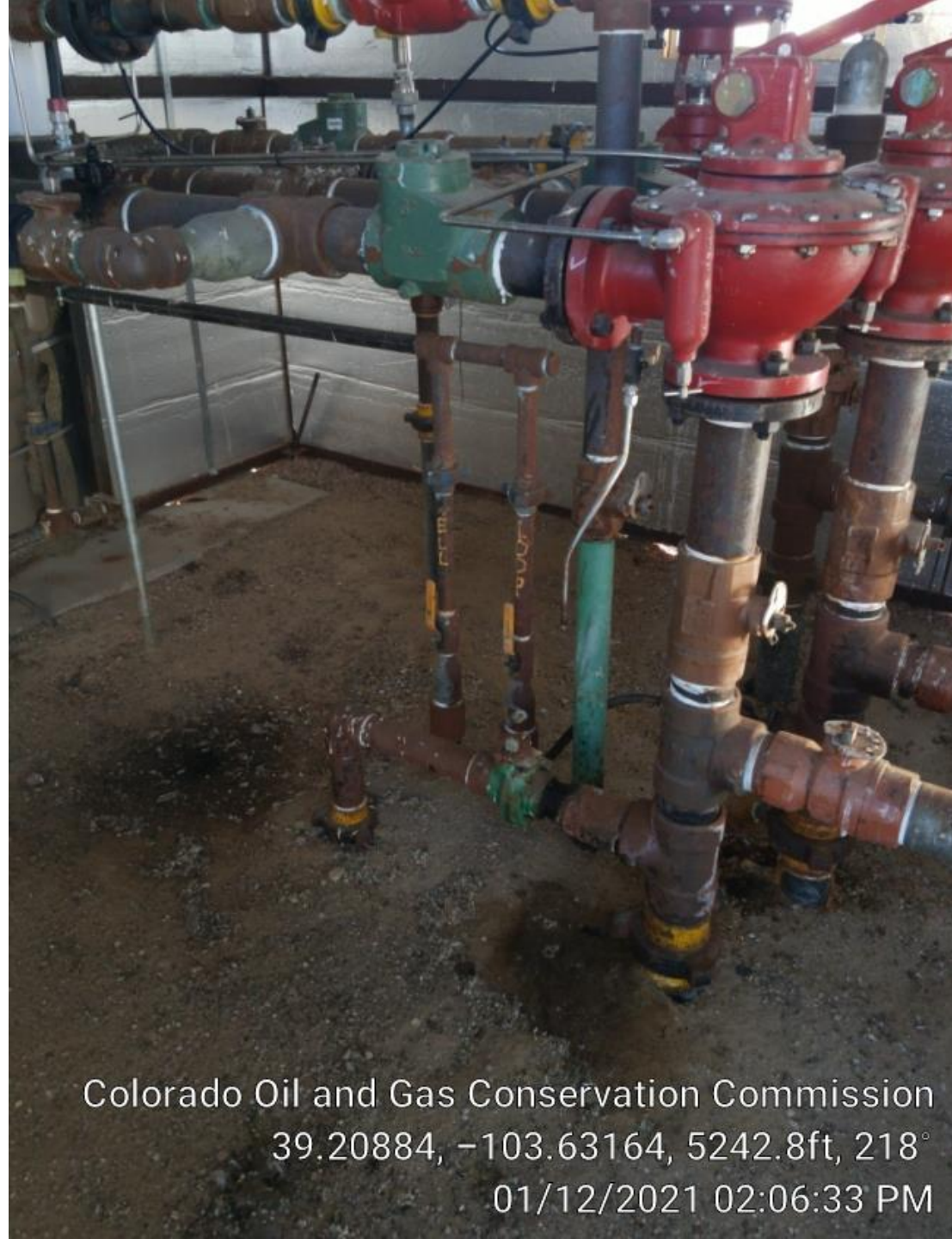
Colorado Oil and Gas Conservation Commission
39.20877, -103.63166, 5239.5ft, 269°
01/12/2021 02:06:07 PM



Colorado Oil and Gas Conservation Commission
39.20876, -103.63165, 5236.2ft, 230°
01/12/2021 02:05:37 PM

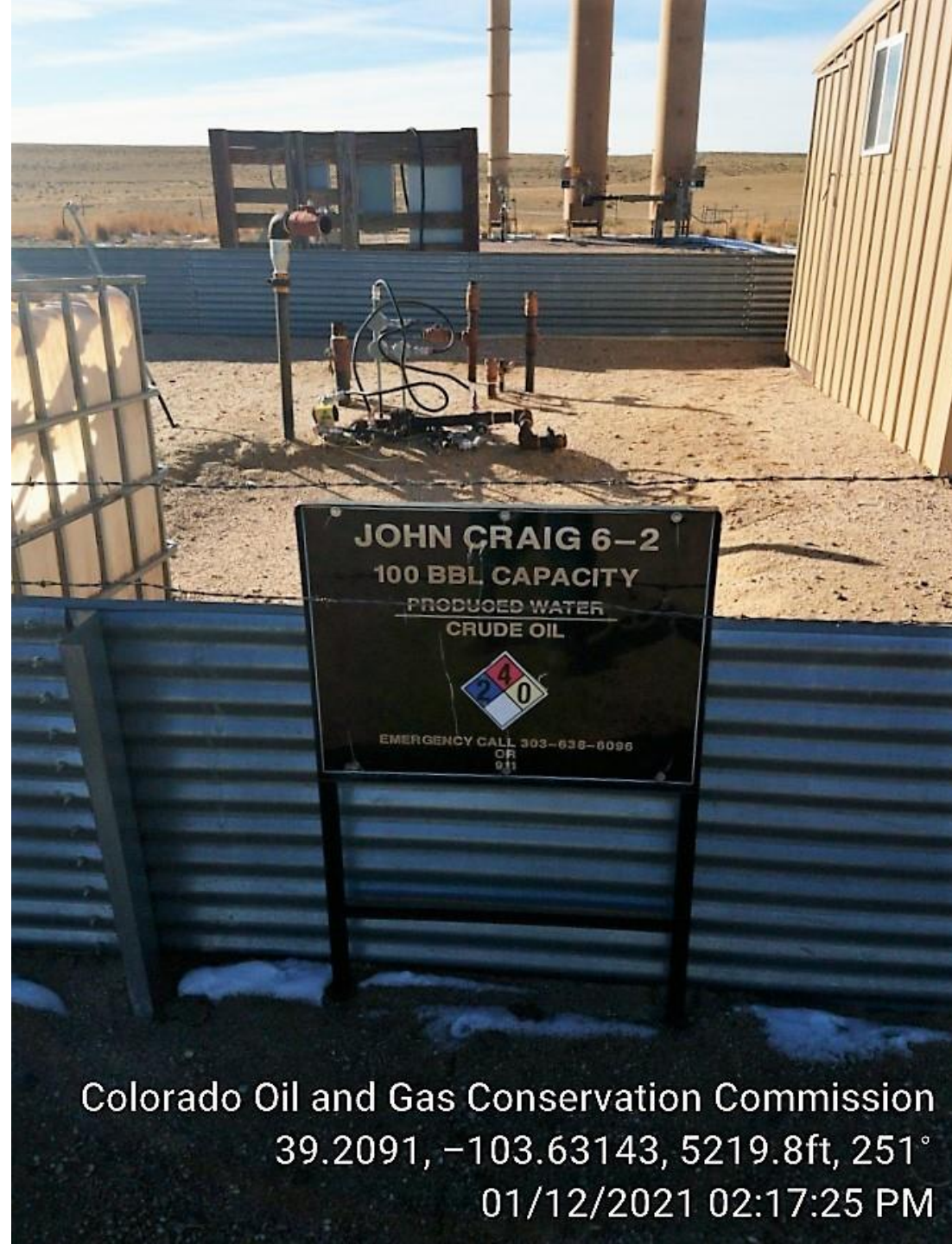


Colorado Oil and Gas Conservation Commission
39.20883, -103.63166, 5242.8ft, 289°
01/12/2021 02:06:18 PM



Stained soil inside 2-2
treater shed.

Colorado Oil and Gas Conservation Commission
39.20884, -103.63164, 5242.8ft, 218°
01/12/2021 02:06:33 PM



Unused treater risers need
LO/TO installed.

Colorado Oil and Gas Conservation Commission
39.2091, -103.63143, 5219.8ft, 251°
01/12/2021 02:17:25 PM

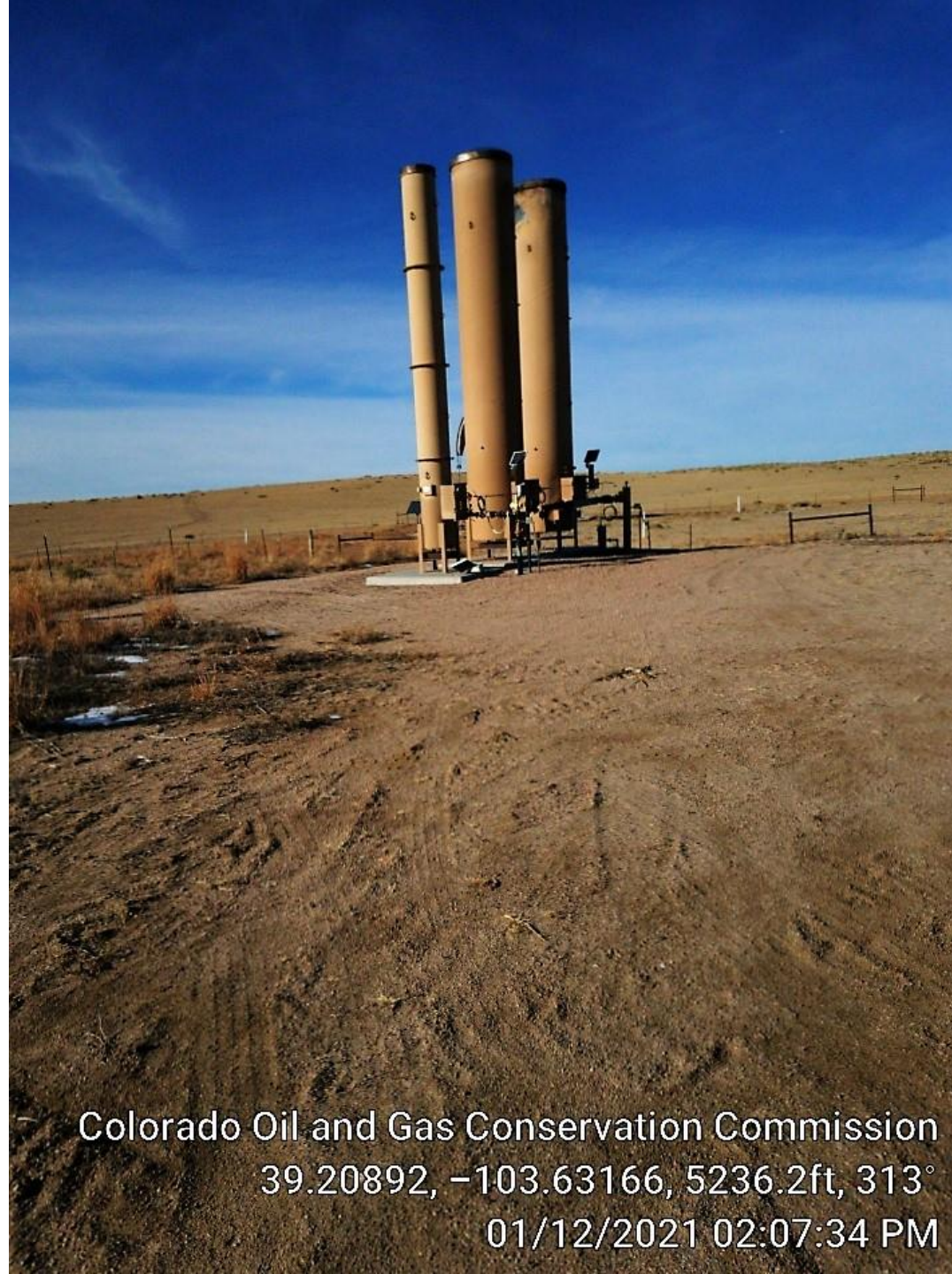


Colorado Oil and Gas Conservation Commission
39.20912, -103.63143, 5219.8ft, 266°
01/12/2021 02:17:32 PM



Inside 1-2 treater shed.

Colorado Oil and Gas Conservation Commission
39.20911, -103.63152, 5206.7ft, 66°
01/12/2021 02:11:54 PM



The two big ECDs are on.

Colorado Oil and Gas Conservation Commission
39.20892, -103.63166, 5236.2ft, 313°
01/12/2021 02:07:34 PM



Colorado Oil and Gas Conservation Commission
39.20943, -103.63202, 5213.3ft, 314°
01/12/2021 02:09:02 PM



Colorado Oil and Gas Conservation Commission
39.20955, -103.63219, 5216.5ft, 356°
01/12/2021 02:09:22 PM



Colorado Oil and Gas Conservation Commission
39.20963, -103.63222, 5213.3ft, 67°
01/12/2021 02:09:38 PM